

Measure M Independent Taxpayer Oversight Committee

Transit Projects Update June 5, 2024

Allison Yoh

Deputy Chief Planning Officer (Interim)



Measure M Transit Projects



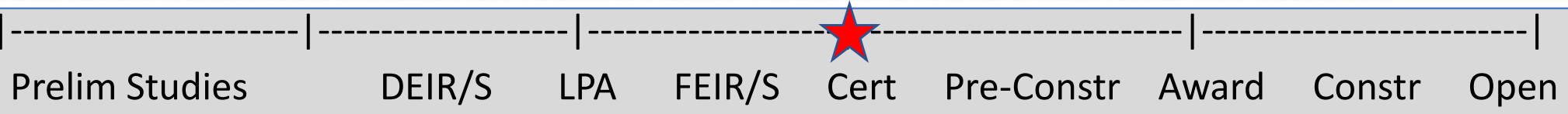
> Major Pillar Projects

- (1) Southeast Gateway Line
- (2) C Line Extension to Torrance
- (3) Sepulveda Transit Corridor
- (4) Eastside Transit Corridor Phase 2

> Other Projects in Planning

- Vermont Transit Corridor
- K Line Northern Extension

Southeast Gateway Line



Current Phase	Most Recent Cost Estimate
EIR Certified EIS per FTA	IOS - \$7.1B (YOES, forecast completion 2035)

Recent Activities

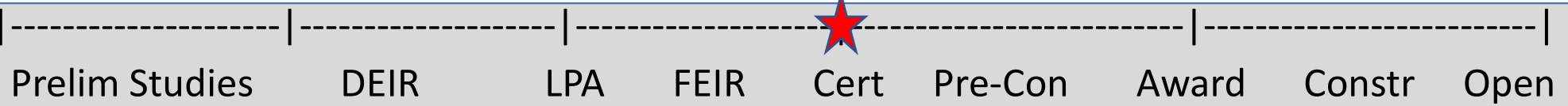
- Feb 2024: UPRR, Ports of Los Angeles/Long Beach, ACTA authorized MOU (now fully executed); Program Management Support Services (PMSS) awarded to WSP
- March 29: Release of Final EIS/R; 30-day public review period
- April 26: Board certification of Final EIR and approval of Project (CEQA action); approval of FLM plan

Next Actions

- Continue monthly coordination with PMOC
- Summer 2024: Record of Decision anticipated from FTA (NEPA action)
- Winter 2024: Completion of New Starts Project Development activities and request to enter Project Engineering



Eastside Transit Corridor Phase 2



Current Phase

Most Recent Cost Estimate

EIR Certified
(NEPA TBD)

IOS - \$7.9B
(2031\$, midpoint of construction)



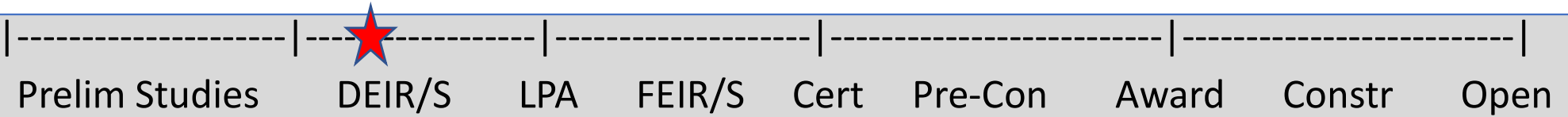
Recent Activities

- Jan-Mar 2024: FLM planning, stakeholder briefings, virtual infrastructure tours, pop-up events, community walk/wheel audits.
- Survey permits secured, Geotech & soil sampling
- April 26: Released Final EIR
- May 23: Board certified EIR (CEQA action, Project approval)

Next Actions

- Continue to coordinate with FTA on NEPA and entry into Project Development phase

Sepulveda Transit Corridor



Current Phase	Most Recent Cost Estimate
EIR	\$5.7B (2015\$)

Recent Activities

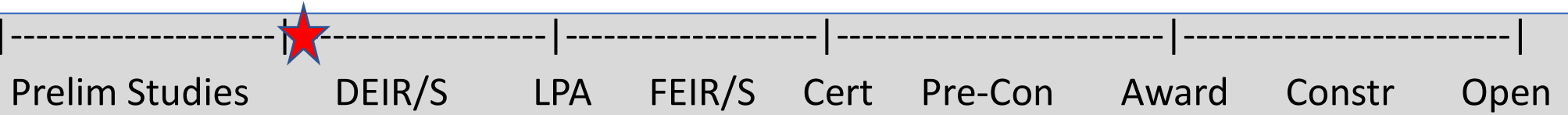
- PDA designs advanced to level sufficient for environmental review
- Environmental technical analysis underway
- Completion of May community meetings
 - 2 in-person in Van Nuys and Westwood
 - 1 virtual

Next Actions

- Continue to complete environmental technical studies
- Draft EIR release anticipated early 2025



Vermont Transit Corridor



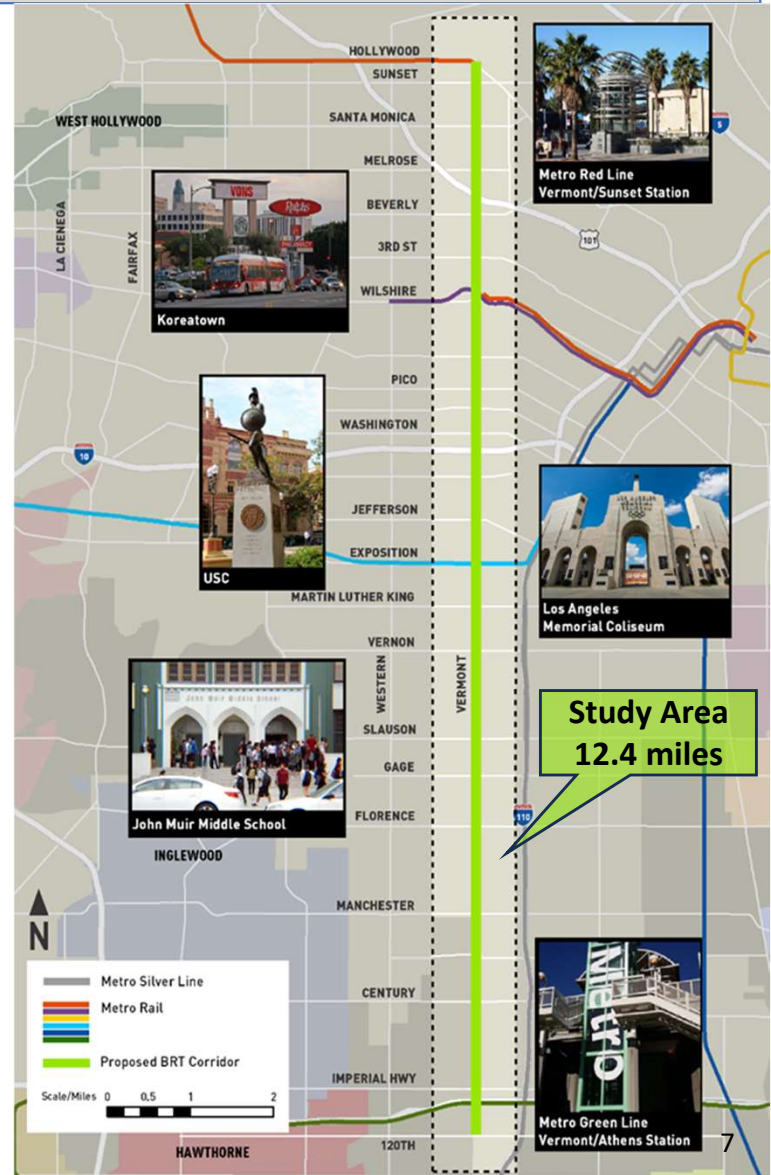
Current Phase	Most Recent Cost Estimate
Environmental	\$425M (2015\$)

Recent Activities

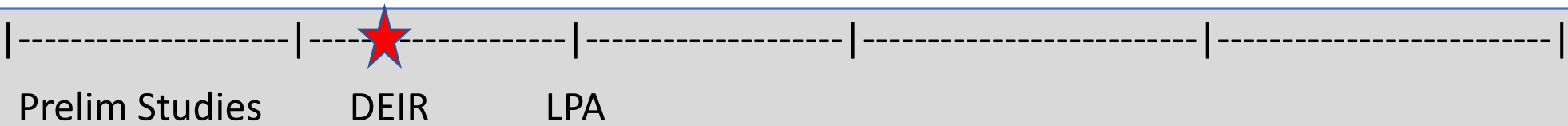
- Metro Operations leading near-term bus service improvements (anticipated Summer 2025)
- Feb/Mar 2024 – Conducted 3 Equity & Cultural Asset Workshops and 4 Community meetings
- Meetings with elected officials, Neighborhood Councils, CBOs, and other key stakeholder
- Early coordination with and involvement by City of LA to deliver BRT elements by 2028
- Design work underway

Next Actions

- Continue planning and design for BRT, informed by CBO/outreach efforts



K Line (Crenshaw) Northern Extension



Current Phase	Most Recent Cost Estimate
EIR	\$2.24B (2015\$)

Recent Activities

- Preparation of Draft EIR chapters
- Published 2023 outreach summary and FAQ (website and newsletter)
- Continue to identify cost and funding opportunities, phasing scenarios
- Pop-up events at CicLAvia

Next Actions

- Continue to develop Draft EIR suitable for public release
- Work on strategic funding framework for delivery
- Continue stakeholder engagement

