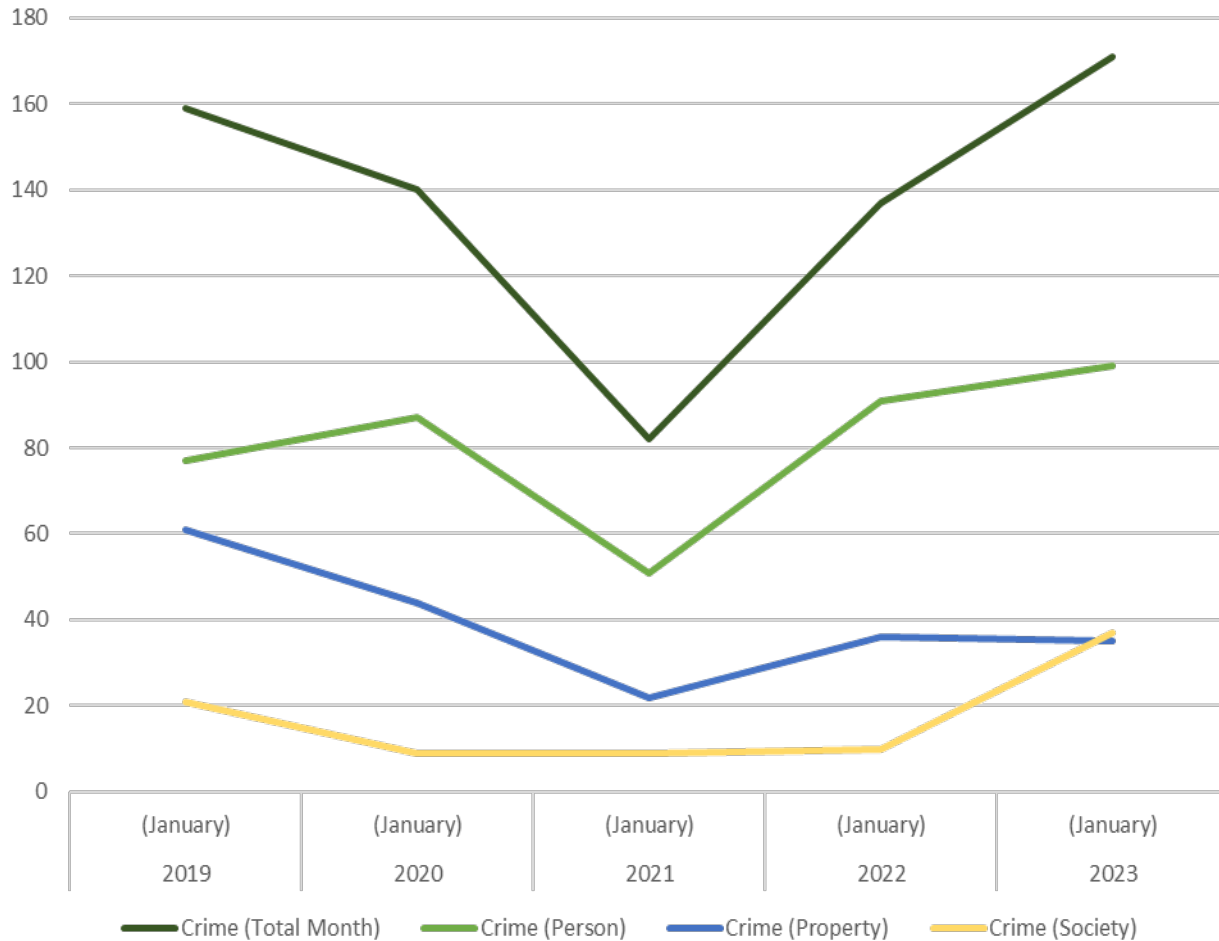


Monthly Public Safety Update

GINA OSBORN

CHIEF SAFETY OFFICER

Rail Overall Crime Rate



Rail Statistics (January)	2019 (January)	2020 (January)	2021 (January)	2022 (January)	2023 (January)
Crime (Total Month)	159	140	82	137	171
Crime (Person)	77	87	51	91	99
Crime (Property)	61	44	22	36	35
Crime (Society)	21	9	9	10	37

Jan 2023 vs Jan 2022

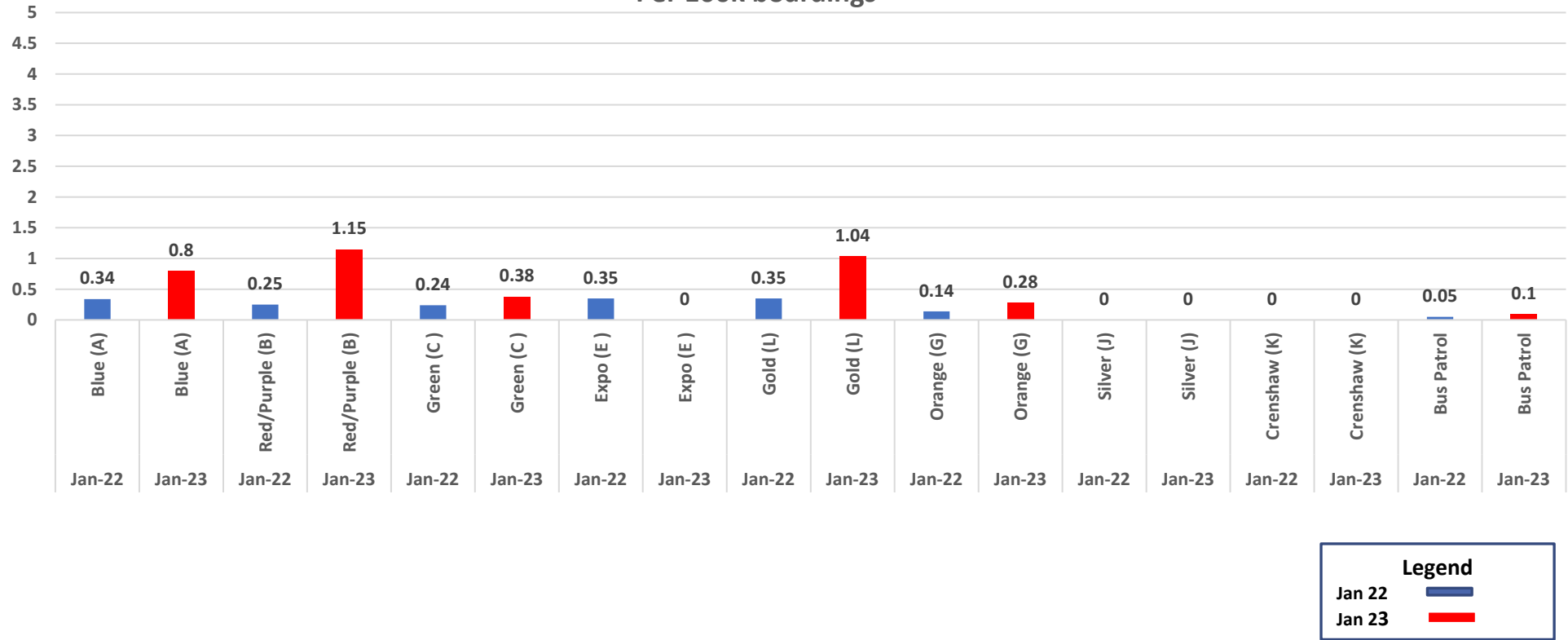
- 25% increase (171 vs 137) in Total Crime on the Rail System
- 270% increase (37 vs 10) in “Society” Crimes on the Rail System due largely to drug violations

Crimes Against Person- Violent crimes (i.e. homicide, aggravated assaults) are those in which the victims are always individuals.

Crimes Against Property - Crimes to obtain money, property, or some other benefit (i.e. theft, vandalism, robbery).

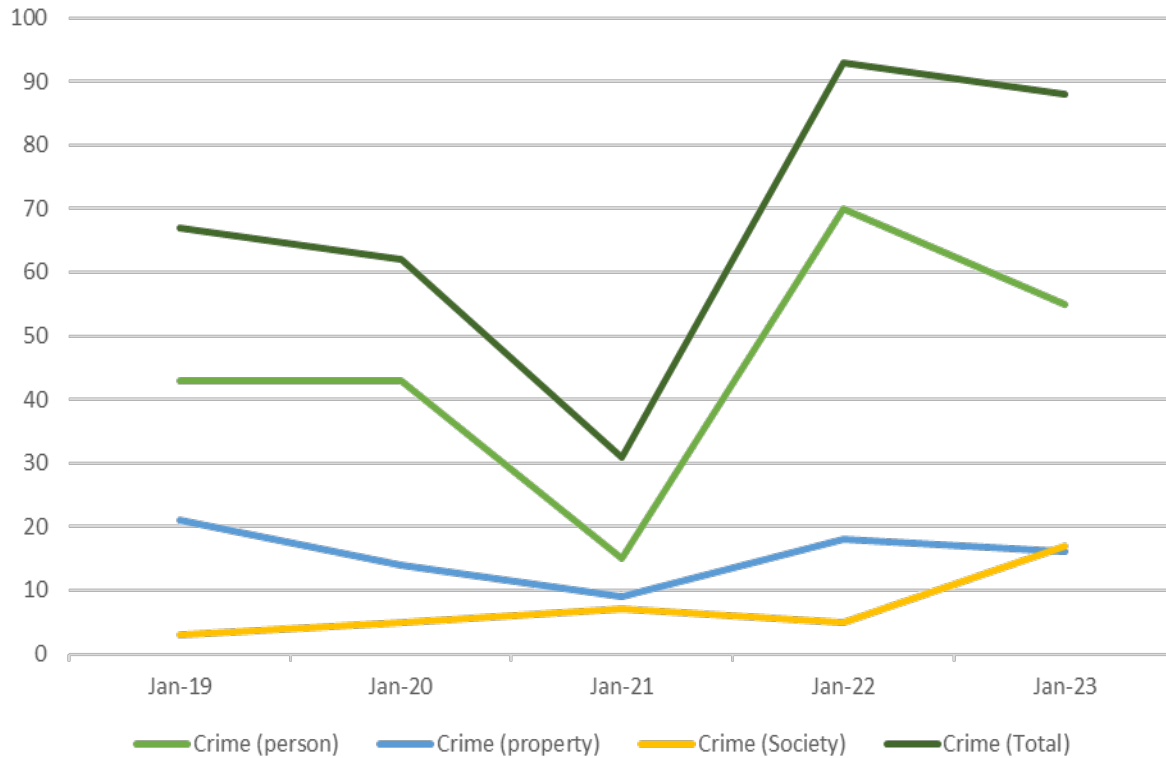
Crimes Against Society - Represent society’s prohibition against engaging in certain types of activity (i.e. drug violations).

**Crimes Against Society
Jan 2022 vs Jan 2023
Per 100k boardings**



- Part 2 crimes (crimes against society such as narcotics, trespassing, or weapons possession) increased in both trespassing and narcotic possession/use incidents on the Blue, Red, Green, and Gold and Orange Lines. There was a minimal increase on the Bus lines.
- The increases related to the Red/Purple and the Gold line was due to an increase in trespassing and narcotics incidents.

BUS OVERALL CRIME JANUARY YEAR OVER YEAR COMPARISON



Bus Statistics (January)	2019 (January)	2020 (January)	2021 (January)	2022 (January)	2023 (January)
Crime (Total Month)	67	62	31	93	88
Crime (person)	43	43	15	70	55
Crime (Property)	21	14	9	18	16
Crime (Society)	3	5	7	5	17

Jan 2023 vs Jan 2022

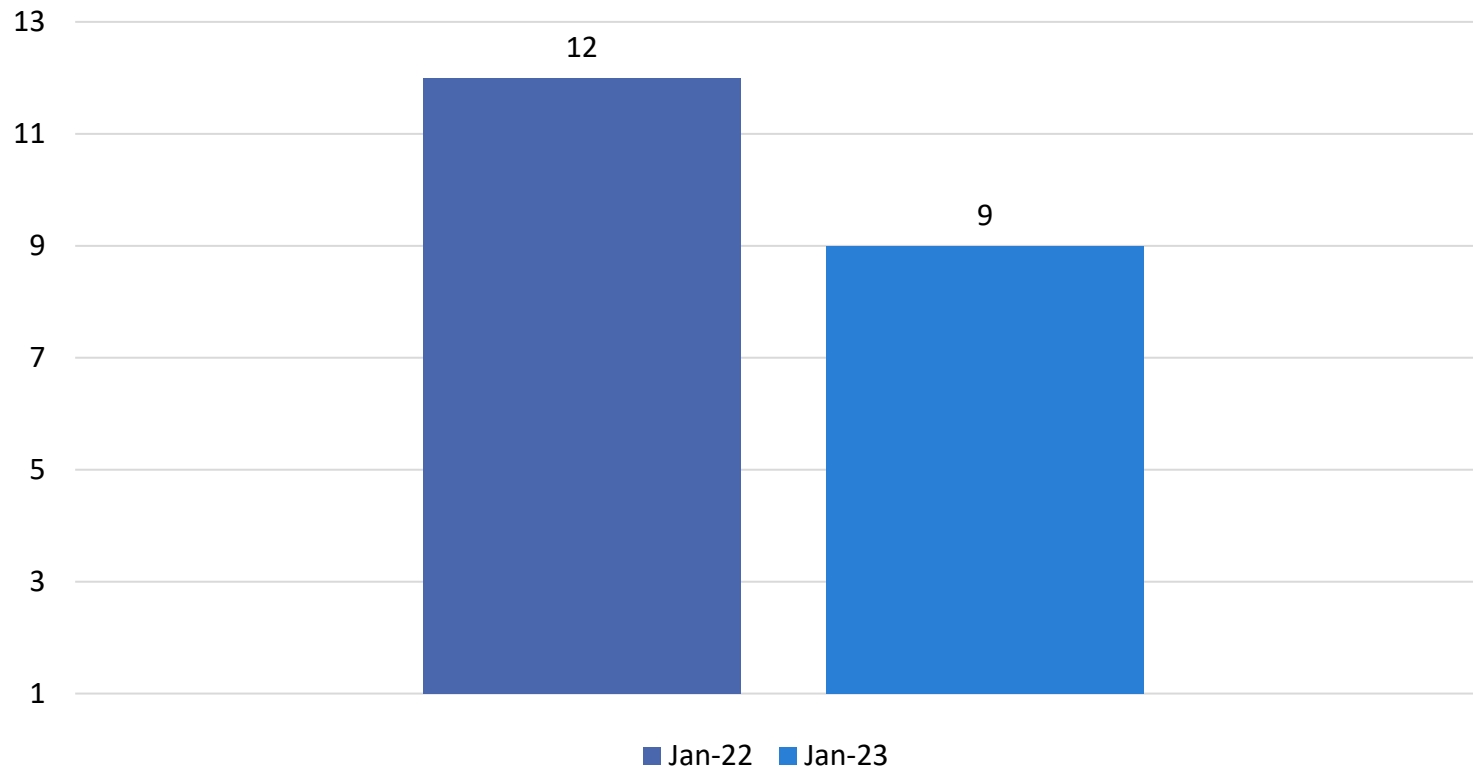
- 5% decrease (88 vs 93) in Total Crime on Bus due to decrease in “Person” Crimes (55 vs 70)
- 240% increase (17 vs 5) in “Society” Crimes on Bus due largely to drug violations.

Crimes Against Person- Violent crimes (i.e. homicide, aggravated assaults) are those in which the victims are always individuals.

Crimes Against Property - Crimes to obtain money, property, or some other benefit (i.e. theft, vandalism, robbery).

Crimes Against Society - Represent society’s prohibition against engaging in certain types of activity (i.e. drug violations).

January 2023 Bus Operator Assaults



- In January, there were a total of 9 bus operator assaults. These assaults represent a 31% decrease from December 2022 and a 16.7% decrease compared to 2022.
- 45% of incidents were caused by no discernible reason or as a result of a missed stop.
- 80% of reported incidents occurred between the hours of 6am and 6pm.

Anti-Drug Campaign Results

2/13/2023-3/11/2023:

On February 13th, Metro launched a 30-day Anti-Drug Campaign, using a comprehensive, layered approach to increase the feeling of safety of riders and employees by decreasing crime while taking a holistic approach that offered mental health/social services and a drug diversion program for those experiencing homelessness or suffered from drug addiction.

The Anti Drug Campaign was rolled out on the Red, Blue, and Gold lines and was supported by Transit Ambassadors, MTS, Contract Security, LAPD, LASD, PATH, and various social services teams.

- **Overall the Anti-Drug campaign resulted in a 10% decrease in customer reported drug related complaints on the system.**
- **By week 4 of the campaign, Transit Watch reports related to Smoking/Alcohol/Drugs was significantly reduced compared to Week 1. Week 1 had a total of 701 reports but by Week 4 the total was 154 (78% reduction).**
- 68 citations and 36 warnings were issued by MTS.
- Law enforcement conducted 205 drug related arrests.

Our law enforcement partners and PATH outreach workers already carry Narcan. Staff completed the rollout of Narcan to Metro Transit Security on March 10th. Staff is working on a plan for Metro Ambassadors to be trained and issued Narcan.

Metro Ambassadors Update

SUPPORT

245 Metro Ambassadors riding and roving on:

- Bus routes: 40, 210, 20, 720
- Silver Line
- Rail Lines: A, B, C, D, K, L

60 more Ambassadors currently in training

CONNECT

Conducted **58,232** customer interactions*

REPORT

1,493 cleanliness issues

- 497 graffiti incidents
- 404 elevator and escalator problems
- 322 safety issues

*Reporting period: 1/6/2023 – 3/2/2023



Good News Stories

Customer report received via email on 3/18/2023 11:21AM.

“Hi, I travel on the metro every week with my 2 yr old son. There are many types of people on the train, and we don't always feel safe. I very much appreciate the role of the Ambassadors in making me feel safer using it. All of them have been kind and friendly and professional and my son loves to see them. It's great that they are so visible. Please continue this program.”