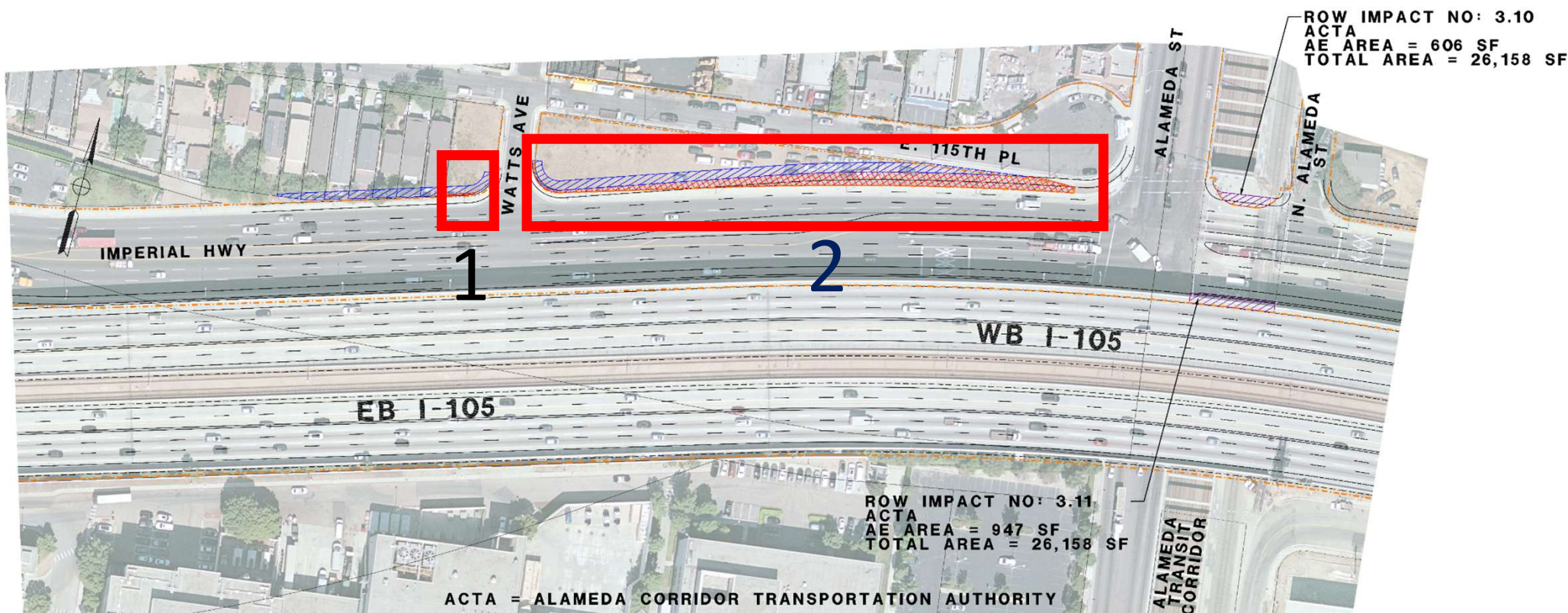


I-105 ExpressLanes Potential Right of Way Impacts



- ROW Impact parcels 1 and 2
 - > Imperial Highway (Watts Ave to N. Alameda St)
 - > Realigning of Imperial Hwy to accommodate WB I-105 widening of I-105/Alameda Viaduct
 - > Blue - Temporary Construction Easement
 - > Red – Partial Acquisition

ATTACHMENT C



ROW Impact Parcels 3 and 4



- ROW Impact parcels 3 and 4
 - > Southwest/Southeast Quadrant of Imperial Hwy/Fernwood Ave Intersection
 - > Realigning of Imperial Hwy to accommodate WB I-105 widening of I-105/Alameda Viaduct
 - > Blue - Temporary Construction Easement
 - > Red – Partial Acquisition

