

METRO PROPERTY INVENTORY

FOR TEMPORARY SHELTERING OF THE HOMELESS

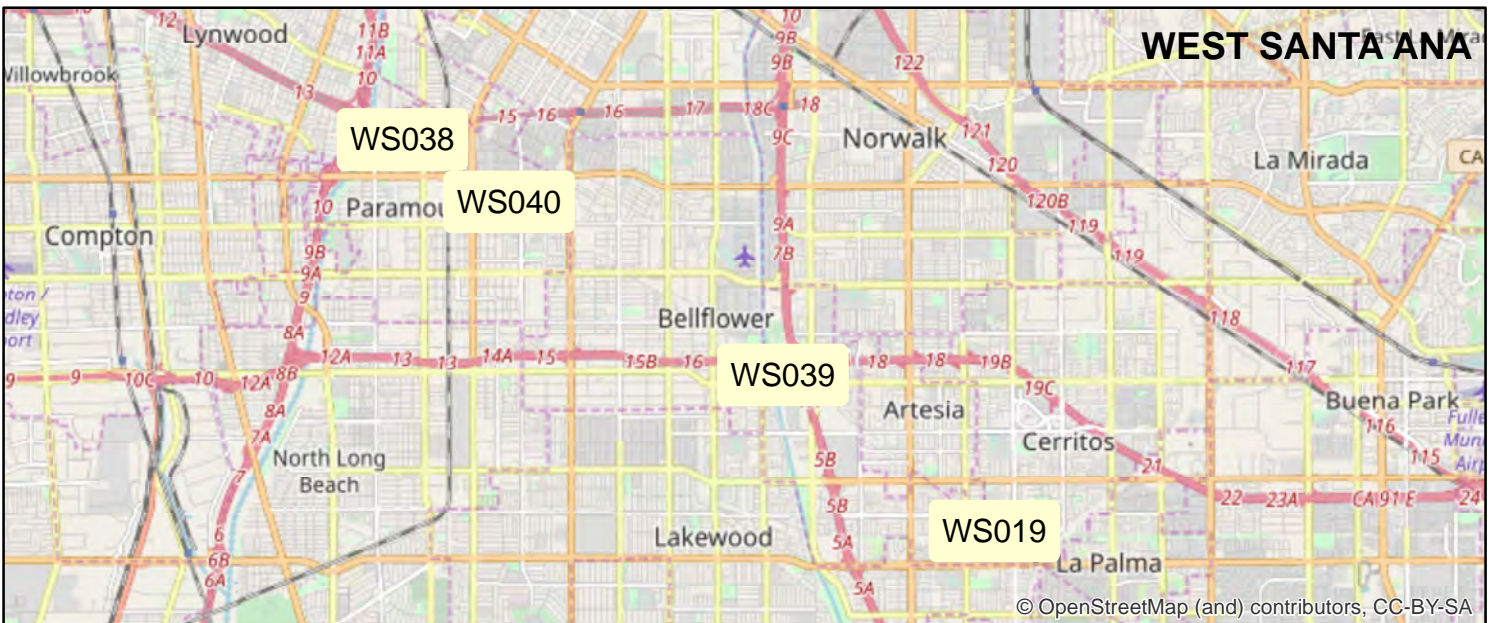
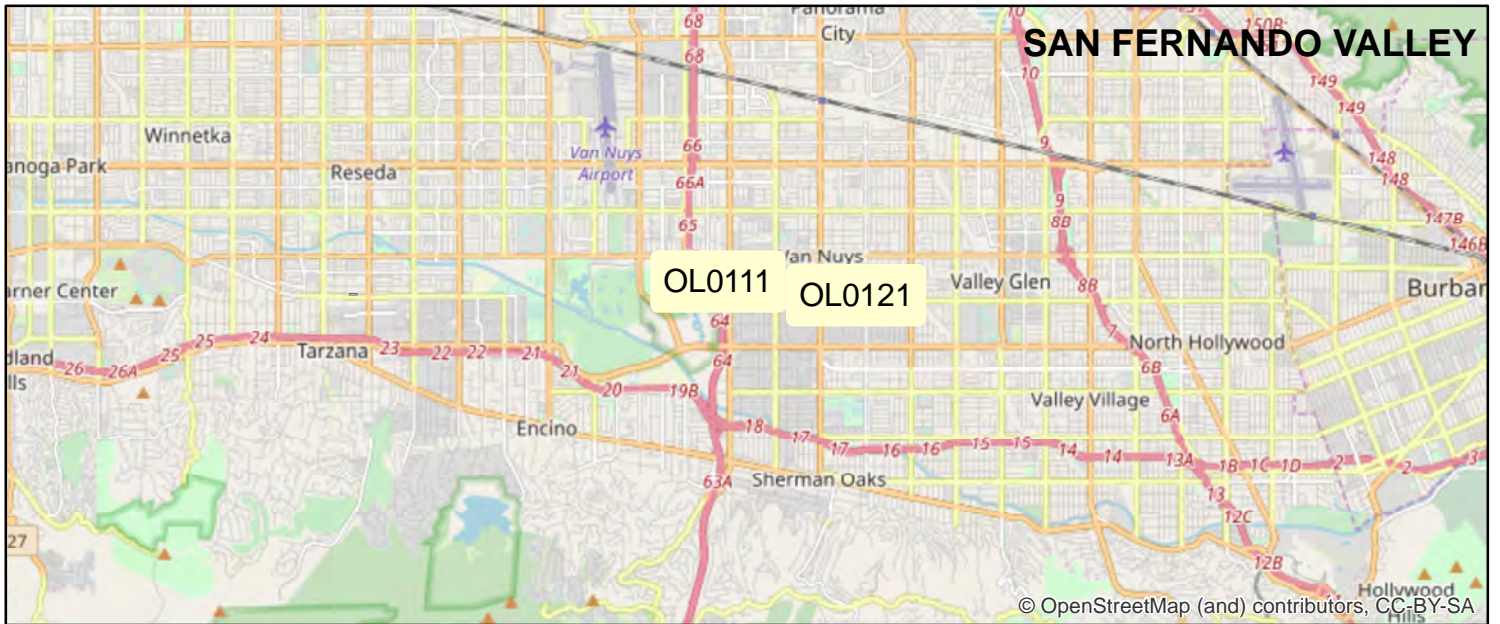
METRO REAL ESTATE DEPARTMENT

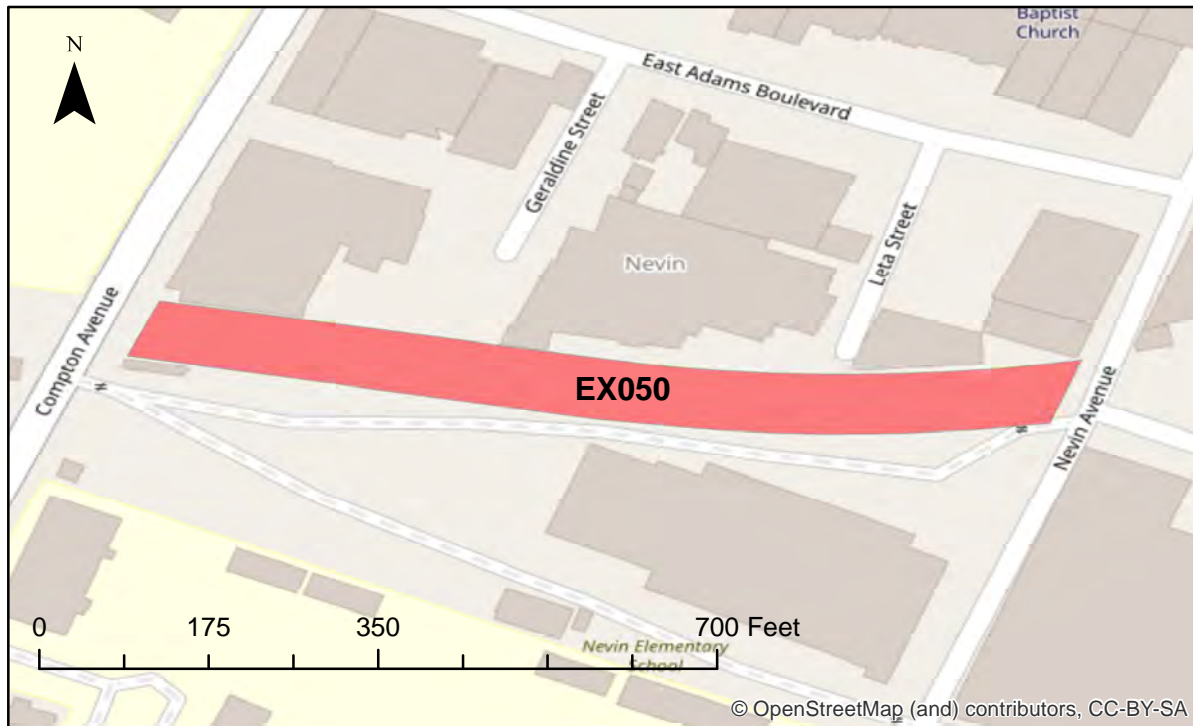
MARCH 2020



Version 2.0

OVERVIEW OF SITE LOCATIONS





SITE INFORMATION

Site Conditions

Dirt lot.

Area (Square Feet)

48,838

Metro POC

Frances Impert
Real Estate Project Manager
213-9222410

Parcel Number(s)

5118-015-900

Current Use

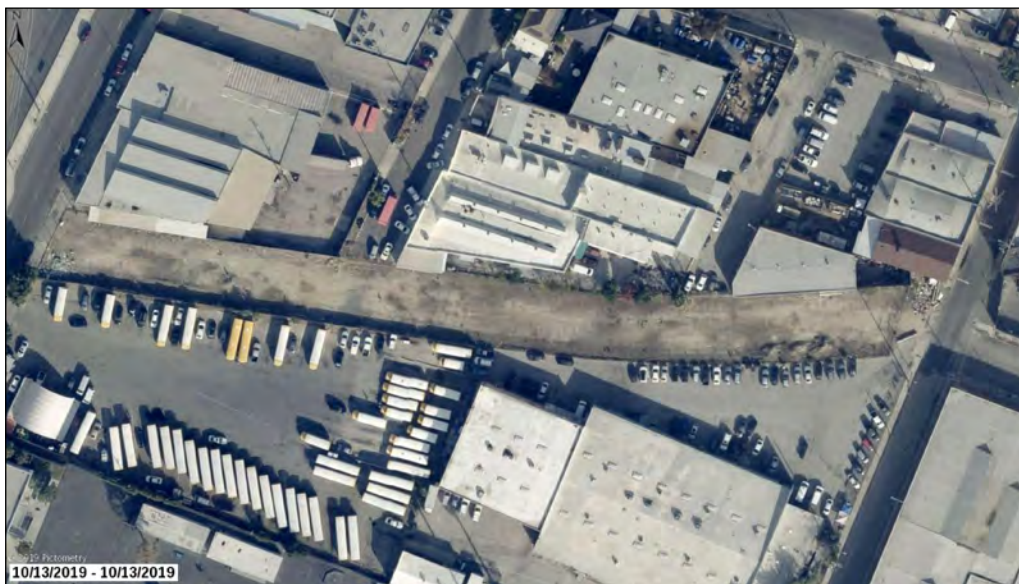
Vacant Land.

Future Use

Maintenance of Way has expressed interest as storage but no project or operational uses are confirmed.

Districts

Supervisor District 2,
Council District 9

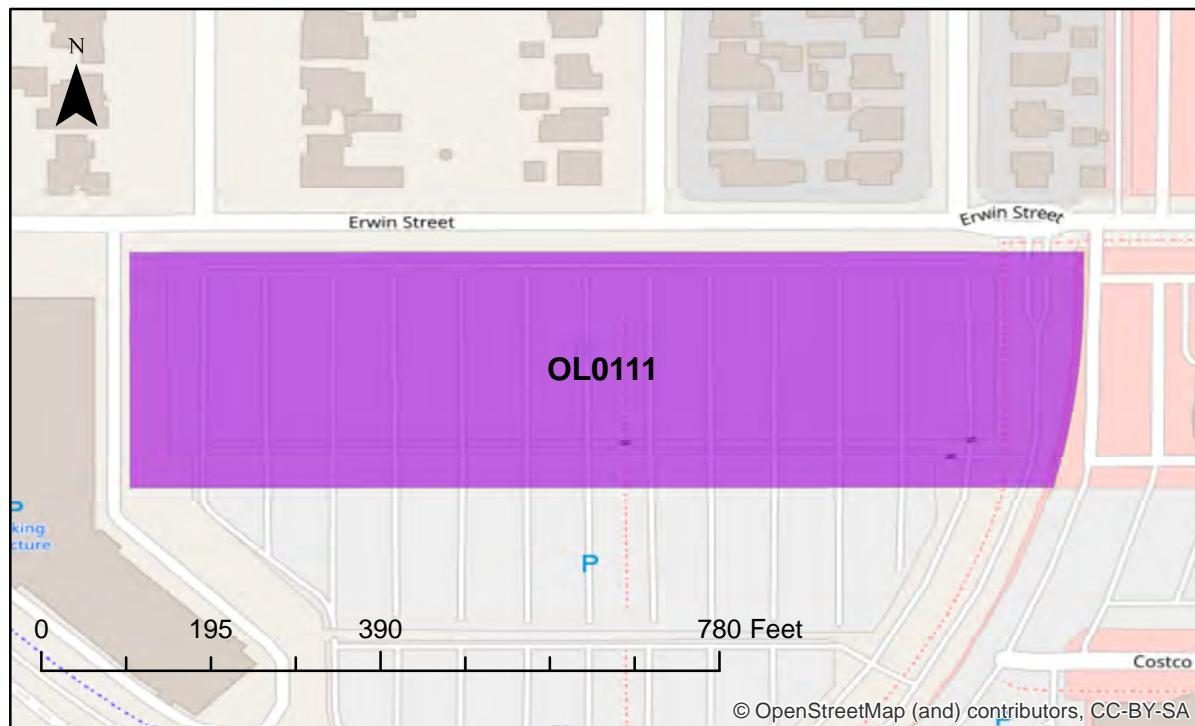




15330 W. Erwin St.
Los Angeles

SITE ID

OL0111



SITE INFORMATION

Site Conditions

Parking Lot.
Adjacent to Sepulveda OL Park 'n Ride.

Area (Square Feet)

243,092

Metro POC

Maria Garcia
Senior Real Estate Officer
213-922-4678

Parcel Number(s)

2242-001-903

Current Use

Month-to Month Keyes Auto Lease.

Future Use

Orange Line Improvements
Laydown Yard in two to three years.

Districts

Supervisor District 3,
Council District 6

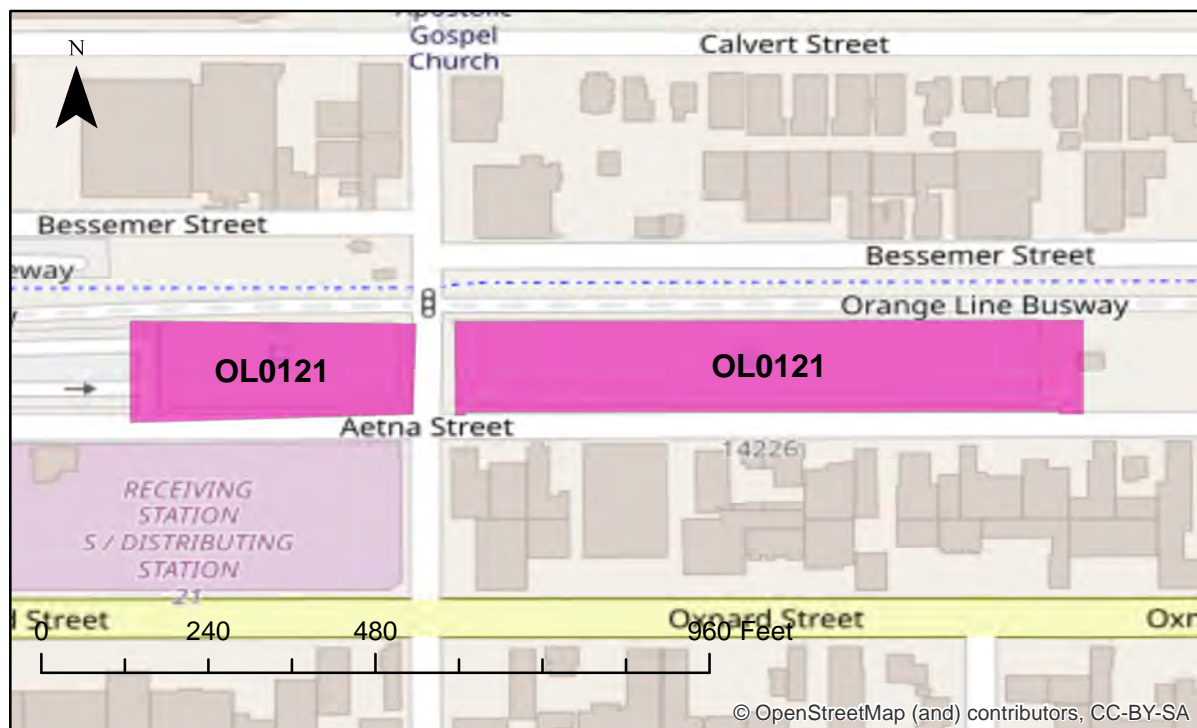
TEMPORARY SHELTER/HOUSING LOCATIONS



**Aetna and Tyrone
Los Angeles**

SITE ID

OL0121



TEMPORARY SHELTER/HOUSING LOCATIONS

SITE INFORMATION

Site Conditions

Parking Lot.
Adjacent to Van Nuys OL Park 'n Ride.

Area (Square Feet)

115,423.3

Metro POC

Maria Garcia
Senior Real Estate Officer
213-922-4678

Parcel Number(s)

2240-008-903

Current Use

Center Street Automotive Lease.
Month-to-month effective May 1, 2020.

Future Use

Available August 15, 2023.

Districts

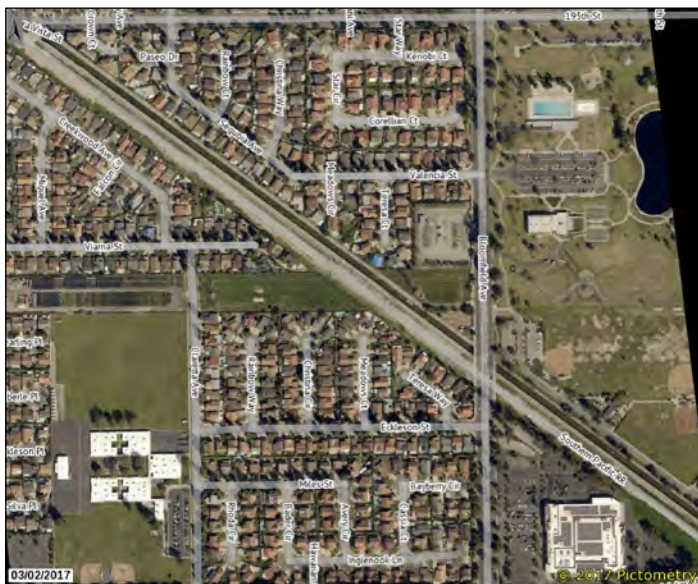
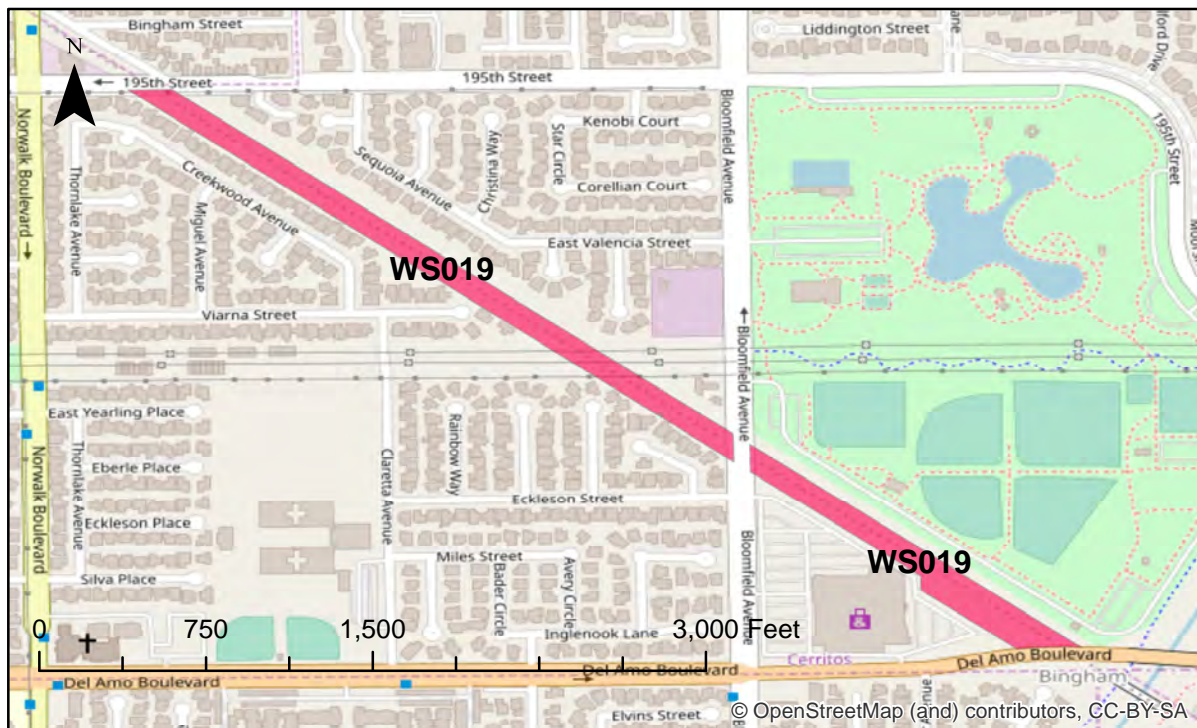
Supervisor District 3,
Council District 6



**Norwalk Blvd & Del Amo Blvd
Artesia**

SITE ID

WS019



SITE INFORMATION

Site Conditions

Dirt lot.

Area (Square Feet)

488,811

Metro POC

Aaron Demirci,
Real Estate Officer
213-922-2427

Parcel Number(s)

7044-016-910, 7056-00-906,
7056-009-905, 7054-011-900

Current Use

Vacant Land.

Future Use

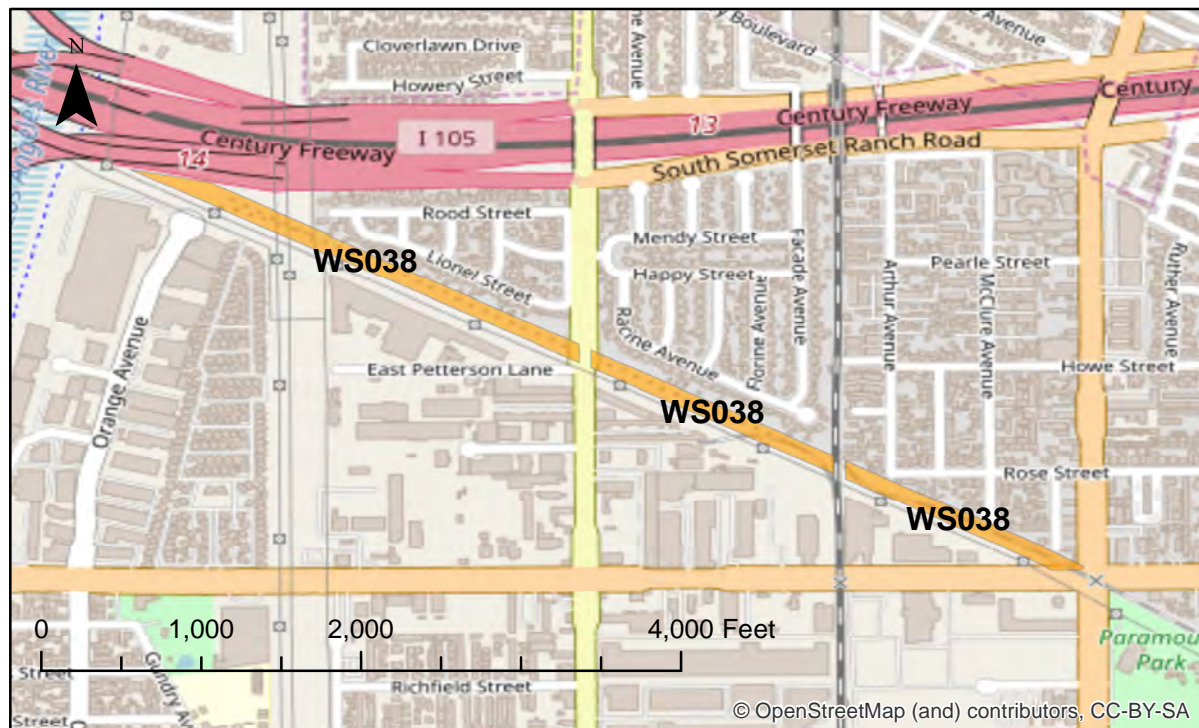
West Santa Ana
Light Rail in July 2023.

Districts

Supervisor District 4



**105 Freeway & Paramount Blvd.
Paramount**



TEMPORARY SHELTER/HOUSING LOCATIONS

SITE INFORMATION

Site Conditions

Dirt lot.

Area (Square Feet)

511,614

Metro POC

Aaron Demirci,
Real Estate Officer
213-922-2427

Parcel Number(s)

6236-003-903, 6236-027-900,
6236-027-901, 6242-019-900,
6242-025-901, 6242-025-902

Current Use

Vacant Land.

Future Use

West Santa Ana
Light Rail in July 2023.

Districts

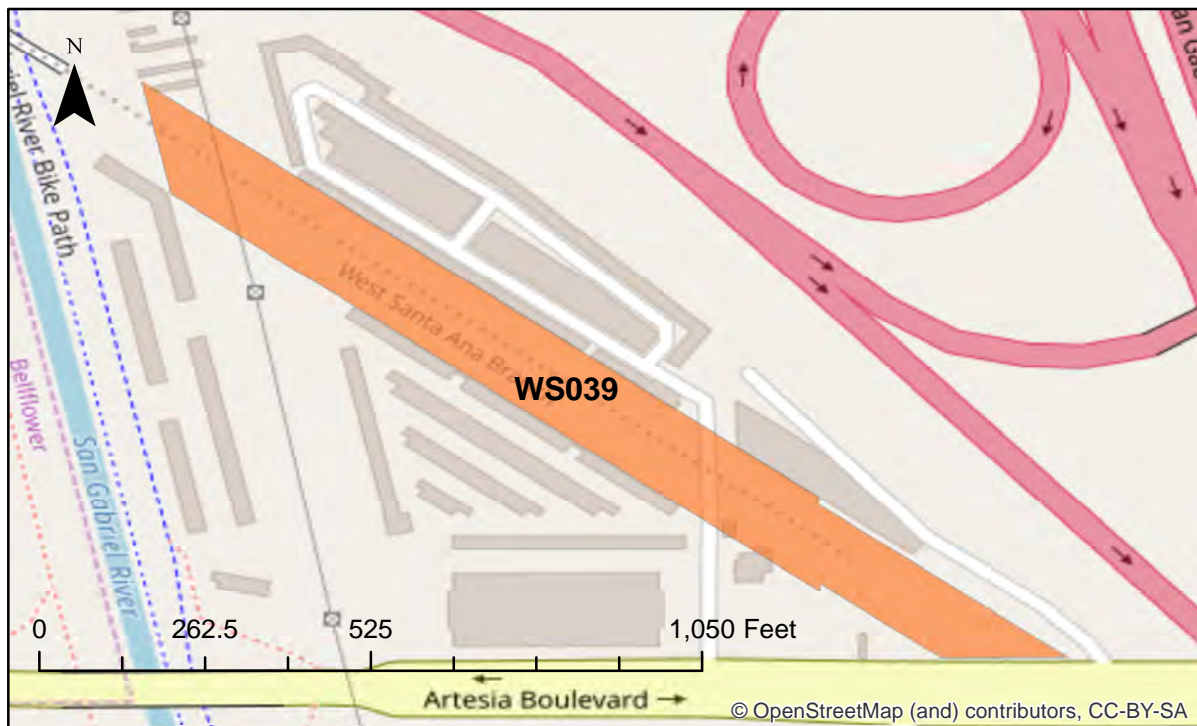
Supervisor District 4,
Council District 12



**LA River & Artesia Blvd.
Bellflower**

SITE ID

WS039



SITE INFORMATION

Site Conditions

Dirt lot.

Area (Square Feet)

167,810

Metro POC

Aaron Demirci,
Real Estate Officer
213-922-2427

Parcel Number(s)

7034-001-901, 7034-001-902

Current Use

Kia Auto Lease on
month-to-month basis.

Future Use

West Santa Ana
Light Rail in July 2023.

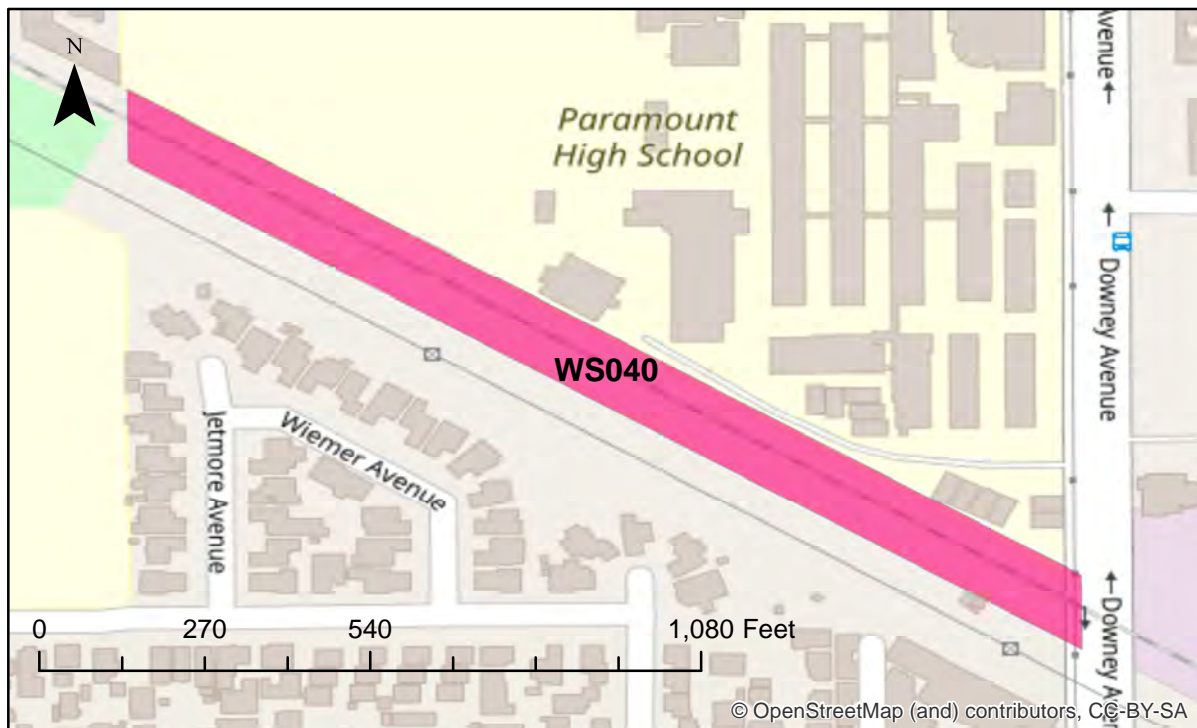
Districts

Supervisor District 4,
Council District 12

TEMPORARY SHELTER/HOUSING LOCATIONS



Paramount Blvd & Downey Ave.
Paramount



SITE INFORMATION

Site Conditions

Dirt lot.

Area (Square Feet)

147,913

Metro POC

Aaron Demirci,
Real Estate Officer
213-922-2427

Parcel Number(s)

6241-001-911, 6241-001-910

Current Use

Vacant Land.

Future Use

West Santa Ana
Light Rail in July 2023.

Districts

Supervisor District 4,
Council District 12