

Program Management Major Project Status Report

Presented By





















Richard Clarke

Chief Program Management Officer

Covid 19 Impacts

- Construction proceeding as an essential service
- Safety protocols are required and monitored
- Contractors doing well assuring safety of workers and completing work
- Metro tracks reported positive cases with follow-up including cleaning of site, contact tracing and self-quarantine
- We have received some notification of impacts to work
- Each impact claim will be assessed consistent with contract terms (i.e. force majeure)

PROJECT BUDGET & SCHEDULE STATUS SUMMARY CHART

Project	Cost Performance	Schedule Performance	Comments
Crenshaw/LAX			Project is 96.1% complete. Contractor needs to increase work force to achieve substantial completion by December 2020. Revised forecast for revenue operations to 2021.
Regional Connector			Project is 69% complete and proceeding on schedule and within budget.
Westside Purple Line Extension-Section 1			Project is 64% complete. Reviewing any impacts differing site conditions and third party requirements may have on the project schedule.
Westside Purple Line Extension-Section 2			Project is 34% complete and proceeding on schedule and within budget.
Westside Purple Line Extension-Section 3			Project is 14% complete and proceeding on schedule and within budget.
Patsaouras Plaza			Project is 90% complete and Substantial Completion is anticipated to be achieved in late September 2020.
Willowbrook/Rosa Parks Station			Blue Line Platform and Mezzanine Finishes and Vertical Circulation work ongoing while station is in operation. Customer Center, Mobility Hub + Public Plaza and promenade finalizing preparations for turnover to Metro. Package B early work demolition and grading has begun. Southern Ped Crossing on schedule to open late August/early September.
I-210 Barrier Replacement			Project 1 Final PS&E Package under review, approval anticipated in September 2020. Metro and Caltrans have clearly identified the best path forward to keep the disruption to freeway traffic and Metro operations to a minimum for Project 2; it involves seeking a design variance from Caltrans. Development of the Project 2 PSR-PR is underway. PSR-PR for Project 2 is expected to be completed in August 2021.
I-5 North: SR 118 to SR 134			Segment 1 and 2 are completed. Segment 3 (Empire Ave & Burbank) is 83% complete. Segment 4 (Magnolia to SR-134) is 97% complete and began the plant establishment phase on June 1, 2020.
I-5 South: Orange County Line to I-605			Segments 1, 3, and the Carmenita Interchange are completed. Segment 2 (Valley View) is 66% complete. Segment 4 (Imperial) is 97% complete and began the plant establishment phase on Jan 31, 2020. Segment 5 (Florence) is 90% complete.

September 2020

Construction Committee

Los Angeles County Metropolitan Transportation Authority



On target



Possible problem



Significant Impact



Metro 3

CRENSHAW/LAX TRANSIT PROJECT

◆ BUDGET

	<u>Current</u>	<u>Forecast</u>
TOTAL COST	\$2,148M	\$2,148M

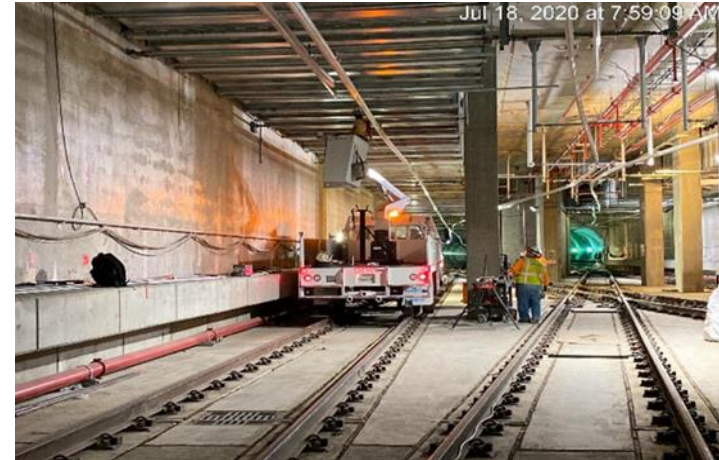
◆ SCHEDULE

	<u>Current</u>	<u>Forecast</u>
REVENUE OPERATION	May 2021	June 2021*

- Overall Project Progress is 96.1% complete.
- Contractor continues rework for trackwork and underground stations conduits.
- Contractor continues work at all stations and street work restoration/landscaping across Project.
- Concerned that contractor is not applying sufficient work force to complete their remaining work and their systems testing by December 2020.



Excavating/removing section of pavement for restoration on southbound Crenshaw Blvd and 54th St.



Continue installing supports and fixtures for the crossover lighting at the invert level of Expo/Crenshaw Station.

September 2020



On target



Possible problem



Significant Impact



Metro 4

Construction Committee

Los Angeles County Metropolitan Transportation Authority

*Contractor Substantial Completion: Winter 2020

REGIONAL CONNECTOR TRANSIT PROJECT

BUDGET

	<u>Current</u>	<u>Forecast</u>
TOTAL COST	\$1,816M	\$1,816M

SCHEDULE

	<u>Current</u> Summer/Fall 2022	<u>Forecast</u> Summer/Fall 2022
REVENUE OPERATION		

- Overall Project Progress is 69% complete.
- Little Tokyo/Arts District Station & Surrounding Area:** Continue structural concrete on upper levels and backfill at 1st/Alameda intersection. Preparations underway for decommissioning Gold Line Little Tokyo/Arts District Station late October.
- Historic Broadway Station:** Structural concrete, MEP and systems continues within the Station, Cavern and Entrance.
- Grand Av Arts/Bunker Hill Station:** Structural concrete, MEP and systems installation continues throughout the Station; continue installation of pre-cast floating slab segments within the station box area.
- Flower Street:** Installation of walls and roof continue along south Flower, while backfill progresses along northern segment.
- Track:** Completed installation of pre-cast anti-vibration floating slabs. Balance of trackwork continues.



Direct Fastener plates and track assembled in left tunnel Reach 2



Aluminum shoring installation for roof deck the future Little Tokyo/Arts District Station

September 2020



On target



Possible problem



Significant Impact

Construction Committee

Los Angeles County Metropolitan Transportation Authority



Metro 5

WESTSIDE PURPLE LINE EXTENSION – SECTION 1

BUDGET

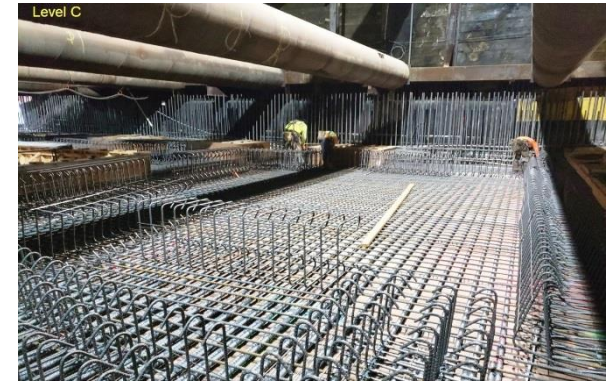
	<u>Current</u>	<u>Forecast</u>
TOTAL COST*	\$3,354M	\$3,354M

* Includes Board approved LOP budget plus finance costs.

SCHEDULE

	<u>Current</u>	<u>Forecast</u>
REVENUE	Fall	Fall
OPERATIONS	2024 (FFGA)	2023

- Overall Project Progress is 64% complete.
- Wilshire/Western Retrieval Shaft:** Continued support of Reach 1 cross passage construction. Break through into Wilshire/Western Station continues.
- Wilshire/La Brea Station:** Station structure concrete work continues including 2nd lift exterior walls and concrete roof placement . Appendage #1 construction at Wilshire/Orange has commenced.
- Wilshire/Fairfax Station:** Entrance plaza structure and appendage work continue. Concourse level rebar installation is underway.
- Wilshire/La Cienega Station:** 2nd lift wall concrete placement (Blocks 3-7) completed on August 3, 2020. Roof form assembly to follow. 2nd lift wall HDPE placement (Blocks 10 – 14) is underway.
- Tunneling:** As of August 9, 2020, the Purple TBM (Elsie) has mined 1,638 feet (50% complete) and the Red TBM (Soyeon) has mined 1,269 feet (39% complete) of the Reach 3 tunnel.
- Reach 1 Tunnel Cross Passages (CP):** 5 out of 12 cross passages have been excavated. HDPE, rebar installation and concrete placement continue at various cross passages. Completion is anticipated in November 2020.
- Reviewing any impacts differing site conditions and third party requirements may have on the project schedule.



Wilshire/Fairfax Station Concourse Rebar Installation



View of Reach 1 Cross Passage #8

WESTSIDE PURPLE LINE EXTENSION – SECTION 2



BUDGET

	<u>Current</u>	<u>Forecast</u>
TOTAL COST*	\$2,530M	\$2,530M

* Includes Board approved LOP budget plus finance costs.



SCHEDULE

	<u>Current</u>	<u>Forecast</u>
REVENUE OPERATION	Winter 2026 (FFGA)	Summer 2025

- Overall Project progress is 35% complete as of July 2020.

Century City Constellation Station

- Pile installation in Constellation Blvd west of the launch box is anticipated to be complete by October 2020.
- Decking operations west of the launch box are anticipated to be complete by November 2020.

Wilshire/Rodeo Station

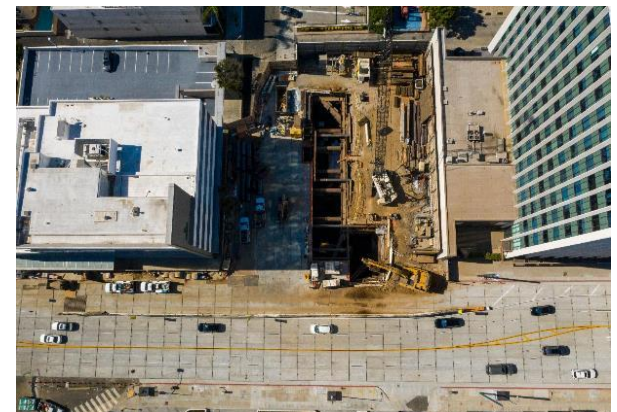
- Excavation of the station box started in June 2020 and is anticipated to be complete in the first quarter of 2021.

Tunneling

- Excavation of the tunnel access shaft is complete. Tunneling operations will be transitioned to the access shaft after each TBM passes through the shaft.
- The abandonment of the two legacy oil wells by BHUSD's contractor is ongoing with oversight by CalGEM.
- The re-launch of the BL TBM (Ruth) from the tunnel access shafts is anticipated in September 2020.
- Excavation of the BR tunnel began on July 20, 2020. The re-launch of the BR TBM (Harriet) will occur after completion of the oil well abandonment work by BHUSD.



Pile Installation West of the Launch Box in Century City



Excavation of the Station Entrance in Beverly Hills

September 2020



On target



Possible problem



Major issue

Construction Committee

Los Angeles County Metropolitan Transportation Authority



Metro 7

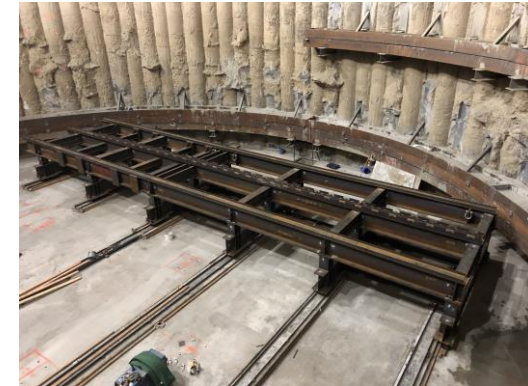
WESTSIDE PURPLE LINE EXTENSION – SECTION 3

OK	BUDGET	
	Current	Forecast
TOTAL COST*	\$3,611M	\$3,611M

* Includes Board approved LOP budget plus finance costs.

OK	SCHEDULE	
	Current	Forecast
REVENUE OPERATION	2028 (FFGA)	2027

- Overall Project progress is 14% complete
- Final design progress is 64% complete
- **C1151 Tunnel Contract**
 - TBM launch shaft excavation is 100% complete.
 - Instrumentation and monitoring equipment installation, and pre-condition surveys continue along the tunnel alignment.
 - Fabrication of tunnel precast concrete liners are ongoing.
 - TBM 1 is being assembled inside the TBM launch shaft.
 - Southern California Edison ductbank for TBM power has been completed. SCE will follow up with cable pulling, termination, and energization.
- **C1152 Stations, Trackwork and Systems Contract**
 - Final design is ongoing.
 - Phase 1 of sound wall installation at Westwood/UCLA Station site completed.
 - Relocation of Stone Canyon Storm Drain has begun.
 - VA parking lots refurbishment and electrical service conduit for station scheduled to start in August 2020.
- **Other Third Party Utility Relocation Work**
 - Joint trench activities for combining Verizon and Frontier telecommunications are ongoing. Conduits and vaults installed. Cable pulling/splicing anticipated to complete by September 30, 2020.



TBM Launch Cradle at Base of Excavated Tail Track Exit Shaft



Reinforced Concrete Boxes for Storm Drain Relocation

September 2020



On target



Possible problem



Significant Impact

Construction Committee

Los Angeles County Metropolitan Transportation Authority



Metro 8

PATSAOURAS BUS PLAZA STATION

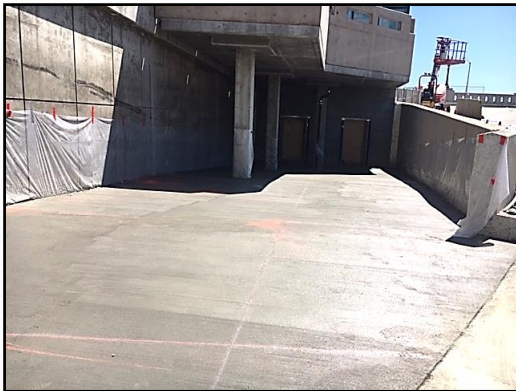
BUDGET

	<u>Current</u>	<u>Forecast</u>
TOTAL COST	\$50.9M	\$50.9M

SCHEDULE

	<u>Current</u>	<u>Forecast</u>
SUBSTANTIAL COMPLETION	Summer 2020	Summer 2020

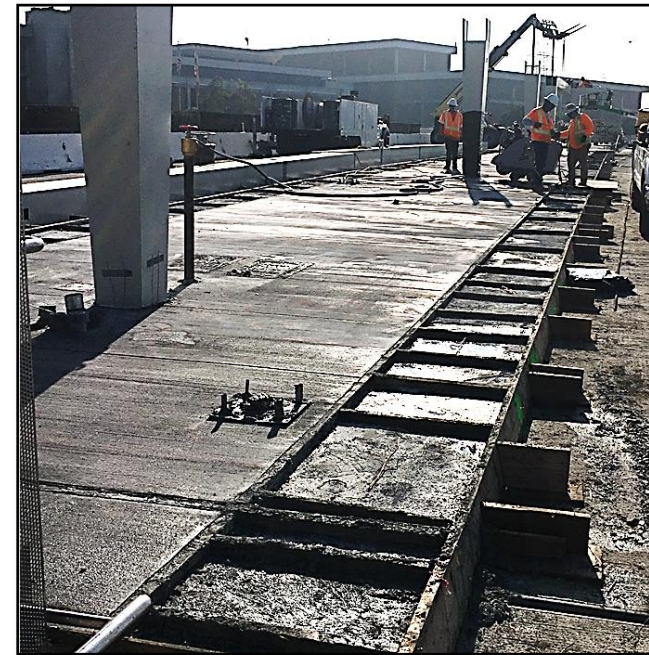
- Overall project progress at approximately 90% complete.
- Substantial Completion anticipated late September 2020.
- Canopy columns installed and bus platform poured.
- P1 Elevator Level concrete poured.
- Archaeological investigation completed and storm drain installed.



P1 Elevator Level



Storm Drain



Bus platform

September 2020



On target



Possible problem



Significant Impact



Metro 9

Construction Committee

Los Angeles County Metropolitan Transportation Authority

WILLOWBROOK/ROSA PARKS STATION

BUDGET

	<u>Current</u>	<u>Forecast</u>
TOTAL COST	\$128.4M	\$128.4M

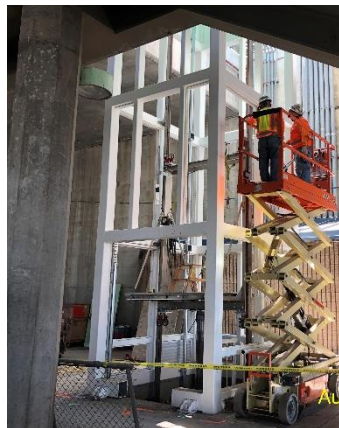
SCHEDULE

	<u>Current</u>	<u>Forecast</u>
SUBSTANTIAL COMPLETION	March 2021	March 2021

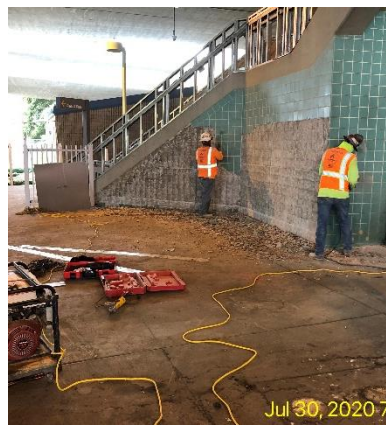
- Package A: Customer Center, Mobility Hub and Public Plaza are substantially complete and in preparations for turnover to Metro. Southern pedestrian crossing scheduled to be completed and open to the public late August/early September.
- Package C: Final Finishes, Systems (Variable Message Sign, TAP) and Vertical Circulation work ongoing while Station is in Operations. North end of mezzanine and stair to C Line platform construction near completion and scheduled to be open to the public end of August/early September.
- Package B: Package B construction has begun with demolition and grading. Working with Operations and Communications to move bus service to temporary bays near southern ped crossing when crossing opens. This will free up the entire Package B area for construction.



Grading Work @ Package B



Package B Work at West C Line Entrance



Mobility Hub, Customer Service Building and Public Plaza substantially complete



September 2020



On target



Possible problem



Significant Impact

Construction Committee

Los Angeles County Metropolitan Transportation Authority



Metro 10

I-210 BARRIER REPLACEMENT PROJECT

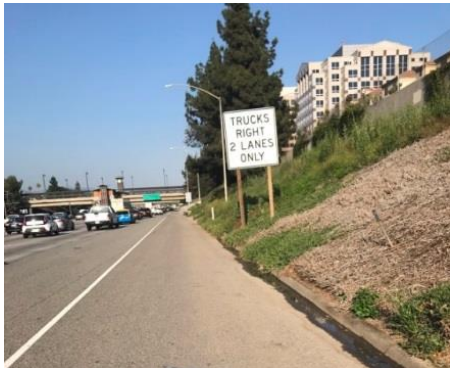
BUDGET

	<u>Current</u>	<u>Forecast</u>
TOTAL COST	\$22.54M	\$22.54M
	Design	Design

SCHEDULE

	<u>Current</u>	<u>Forecast</u>
Complete Design (Proj 1)	Sep 2020	Fall 2020
Complete Design (Proj 2)	Jan 2022	Winter 2022

- Project 1: Segment from Michillinda to Iconic Bridge – Project 1 Final PS&E Package is under review. Metro anticipates Caltrans approval in September 2020.
- Project 2: Segment from west end of the project to Michillinda – Development of Project Report for Project 2 is underway. Project 2 PSR-PR is expected to be completed in August 2021.
- Project 2: Metro and Caltrans have agreed on the best path forward to keep the disruption to freeway traffic and Metro operations to a minimum for Project 2. However, this approach will require Metro to obtain a design variance from Caltrans.



Newly Installed Caltrans Freeway Sign





Incident in 2014




Newly Installed Speed Limit Sign

September 2020

 On target

 Possible problem

 Significant Impact

Construction Committee

Los Angeles County Metropolitan Transportation Authority

I-5 Construction Projects (By Caltrans)

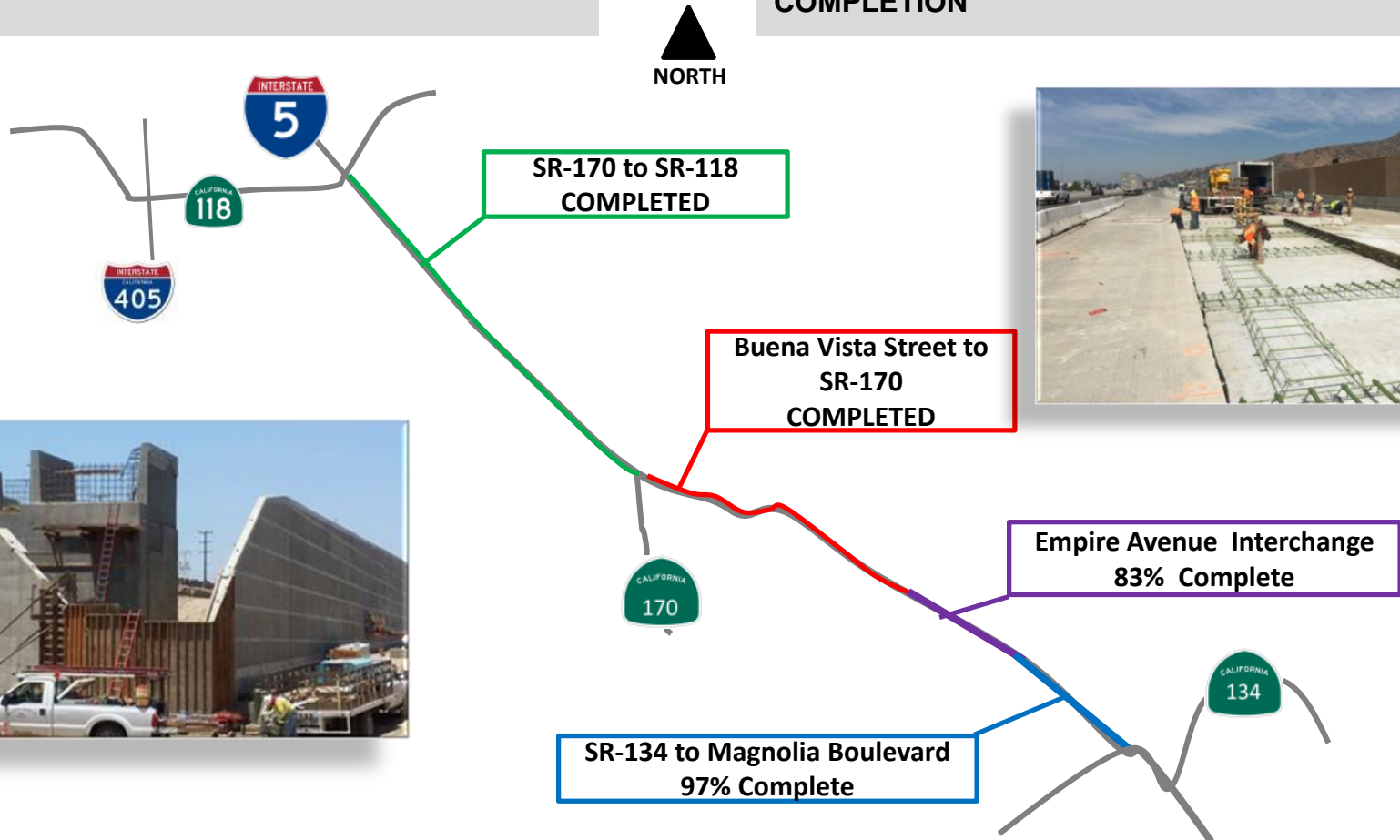


I-5 NORTH: SR 118 TO SR 134



⚠ BUDGET		
TOTAL COST	Current	Forecast
	\$880.9M	\$930.9M*

⚠ SCHEDULE		
ANTICIPATED PROJECT COMPLETION	Current	Forecast*
	Summer 2022	Winter 2022



September 2020



On target



Possible problem



Significant Impact



Metro 13

Construction Committee

Los Angeles County Metropolitan Transportation Authority

* Risk Analysis, May 2020

I-5 SOUTH: ORANGE COUNTY LINE TO I-605



OK BUDGET		
	Current	Forecast
TOTAL COST	\$1.888B	\$1.888B*

◇ SCHEDULE		
ANTICIPATED PROJECT COMPLETION	Current	Forecast*
	Fall 2022	Winter 2022

