



NEXTGEN Bus Plan

Speed & Reliability
Program Update

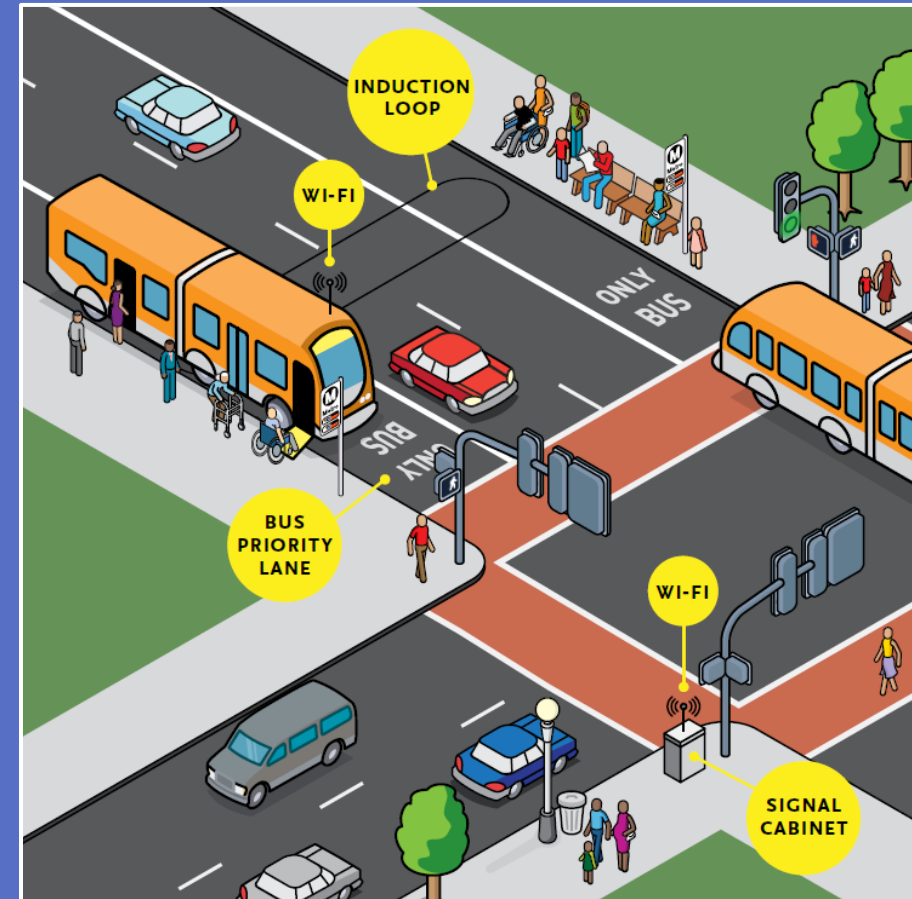


Metro®

SEPTEMBER 2023


Speed & Reliability (S&R) Background

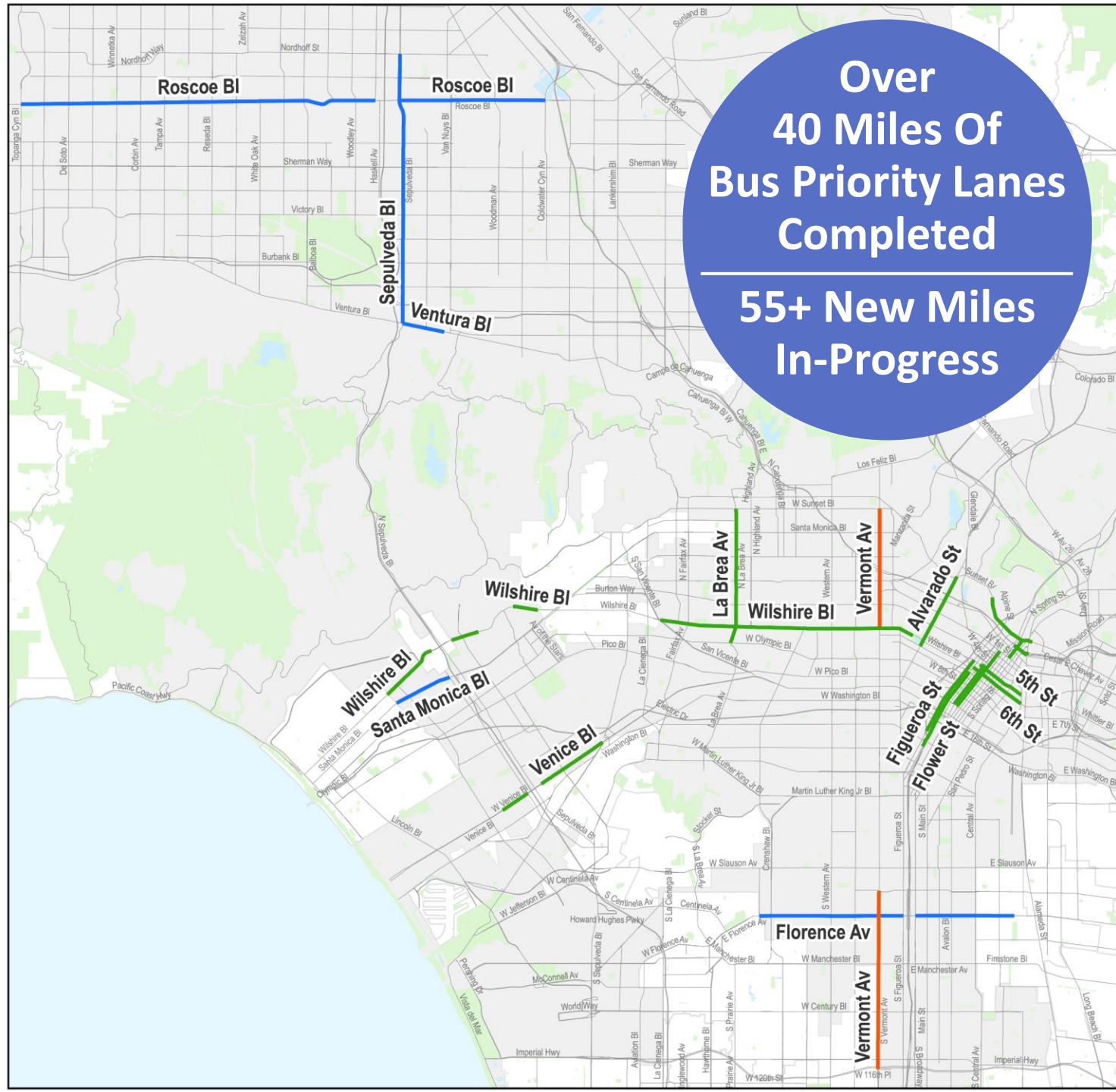
- NextGen Bus Plan improves transit competitiveness through faster, more frequent, and more reliable bus service
- Pursuant to Motions 38.1 (July 2018) and 22.1 (July 2019), a Bus Speed & Reliability tactical transit infrastructure program was established to accelerate collaborative solutions for bus delays
 - 100+ Miles of Bus Priority Lanes
 - 1,600+ Intersections with Transit Signal Priority
 - All Door Boarding to Reduce Dwell Times
 - Tactical Treatments & Studies (Bus & Rail)
 - Bus Stop & Layover Improvements
- Force multiplier that improves the customer experience (CX) and operator conditions with operational savings reinvested into better service



Bus Lane Map

Bus Priority Lane Corridors

- ✓ Wilshire Bl
- ✓ Flower St
- ✓ Aliso St
- ✓ 5th St
- ✓ 6th St
- ✓ Alvarado St
- ✓ Grand Av
- ✓ Olive St
- ✓ Venice Bl
- ✓ La Brea Av
-  Sepulveda Bl
-  Florence Av
-  Santa Monica Bl
-  Vermont Av



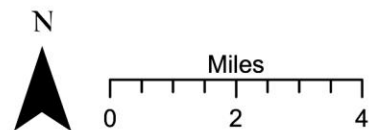
Over
40 Miles Of
Bus Priority Lanes
Completed

55+ New Miles
In-Progress

Bus Lane Projects DRAFT, 9/21/2023

Bus Lane Corridors

-  Completed
-  Under Design/Construction
-  In-Progress
-  City of Los Angeles
-  Other Cities/County



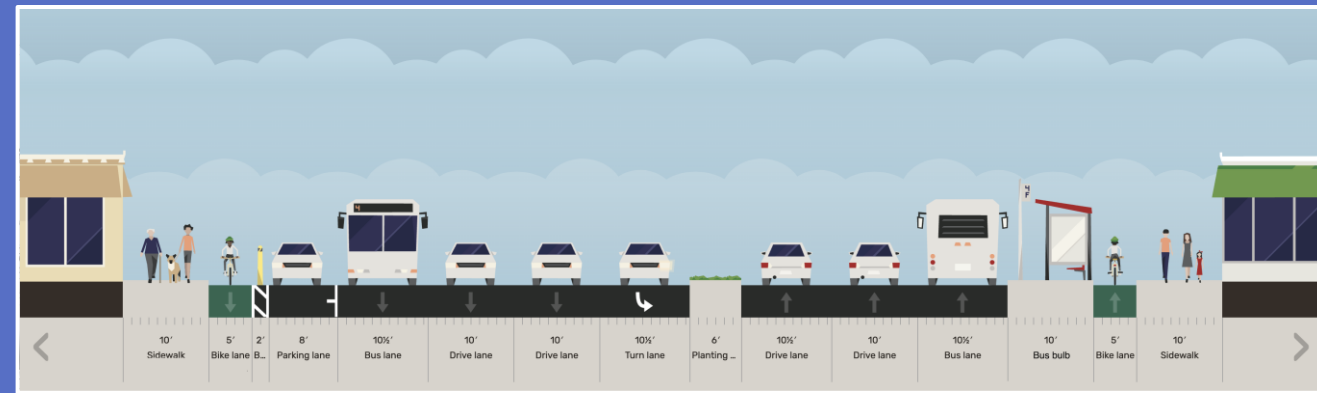
Bus Priority Lanes Update

La Brea Av (Line 212): Completed August 2023



Venice Bl (Line 33): Completed June 2023

- Bus speeds have improved up to 8 MPH faster, or up to 130% speed improvement
- On-time performance improved 54% to 79%, with 73% fewer late buses
- California Transportation Commission (CTC) recently awarded \$6.5M for Phase 2 partnership with City of LA to upgrade 38 bus stops with expanded boarding islands and 27 bus shelters with lighting and real-time arrival displays



Bus Priority Lanes Update

Sepulveda Bl (Line 234) in SFV

Implementation began September 2023

Florence Av (Line 111)

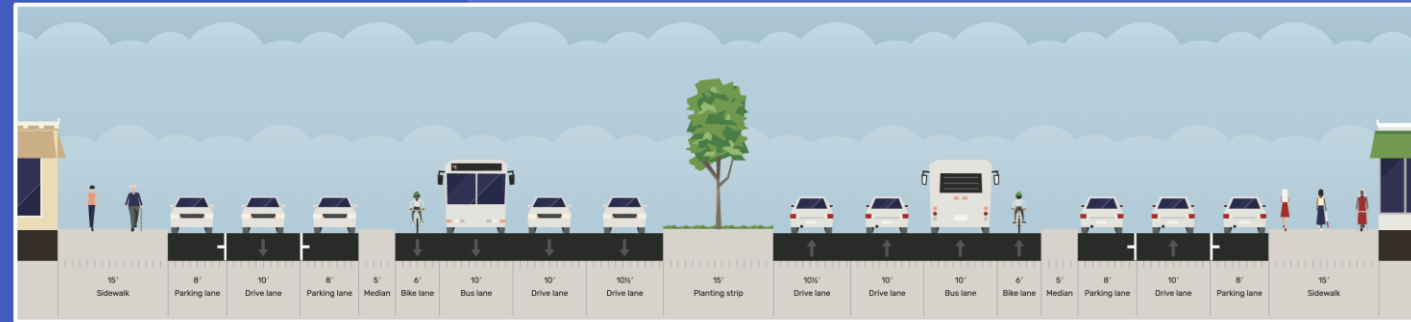
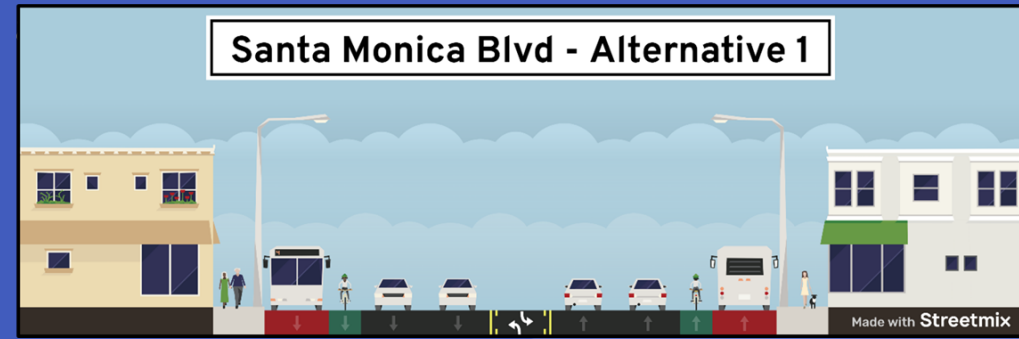
- In June 2023, StreetsLA completed nearly 2 miles of roadway repairs to prepare for bus lanes
- In September 2023, design work began for the bus lanes. Project timeline will be provided at the next quarterly update.

Wilshire Bl (Lines 20 & 720)

Upgraded segment between the City of Beverly Hills and Comstock Av from peak period to full-time hours

Santa Monica Bl (Line 4 & Big Blue Bus)

Partnering with Caltrans to implement a peak-period bus lane between the I-405 Fwy and Centinela Av,



Vermont Av (Lines 204 & 754)

Proposed northern segment between Sunset Bl and Wilshire Bl, and southern segment between Gage Av and Vermont/Athens C Line Station

- Typically, over 43,000 boardings per day, busiest bus corridor in the entire Metro system
- 84% do NOT own or have access to a car
- 87% below HUD's Very Low Income Level
- 93% ride Metro every day or near daily
- 96% are BIPOC

Community engagement slated for Fall/Winter 2023, design in Spring 2024, and implementation in Summer 2025

Southeast Los Angeles (SELA)

Transportation Improvement Program

Metro recently awarded \$14.5M from the CTC Local Partnership Program (LPP) as part of a \$31.13M program for tactical transit improvements, including:

- Transit Signal Priority expansion to 114 SELA intersections using state-of-the-art cloud-based technology, providing more green time for buses
- Purchase and installation of bus shelters with real time displays and improved lighting at 100 of the busiest bus stops that lack shelters today
- Purchase and installation of solar-powered lighting upgrades at 100 other bus stops that do not have shelters
- Operational and customer experience improvements at Norwalk C Line Station, Artesia A Line Station, and Compton A Line Station / MLK Transit Center