



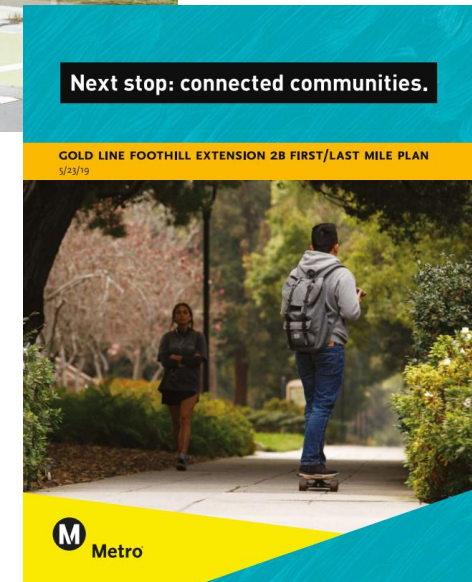
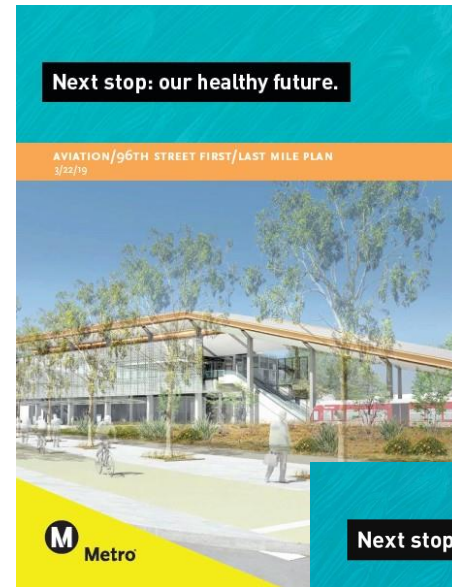
Next stop: vibrant communities.

**First/Last Mile Plans –
Aviation/96th St. Station and
Gold Line Foothill Extension 2B**
Planning and Programming Committee
June 19, 2019



Recommendation

- A. ADOPT Aviation 96th St. Station First/Last Mile Plan
- B. ADOPT Gold Line Foothill Extension 2B First/Last Mile Plan
- C. DIRECT staff to return to the Board fall 2019 re: implementation recommendations



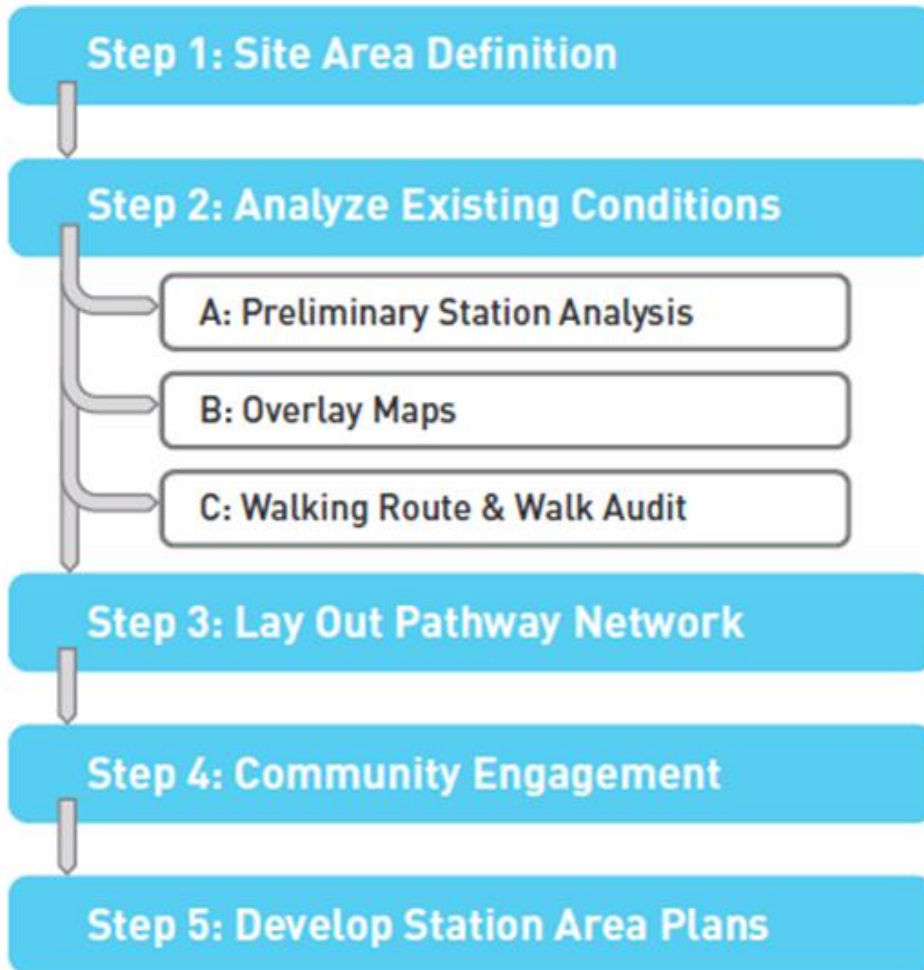
Background

First/Last Mile (FLM) Plans

- Aviation/96th St. Station
- Gold Line Foothill Extension 2B Stations:
 - Glendora
 - San Dimas
 - La Verne/Fairplex
 - Pomona North
 - Claremont



First/Last Mile Methodology and Process



Aviation/96th St. Station FLM



- Coordination with multiple committed planning and construction efforts
- Emphasis on filling gaps
- Complement other projects connecting to LAX

Gold Line Foothill Extension 2B FLM

- CBO partner: ActiveSGV
- Responsive to transit project phasing and design
- Close coordination with city staff and extensive community engagement
- Suburban-context specific recommendations



Implementation Considerations

- Staff to return to Board after FLM Guidelines are completed (anticipated fall 2019) with implementation recommendations
- FLM Guidelines contemplate standard approach to FLM project delivery for transit corridor projects
- GL2B – funding agreement allows cities to apply FLM expenditures in adopted plan toward 3% contribution

Thank you