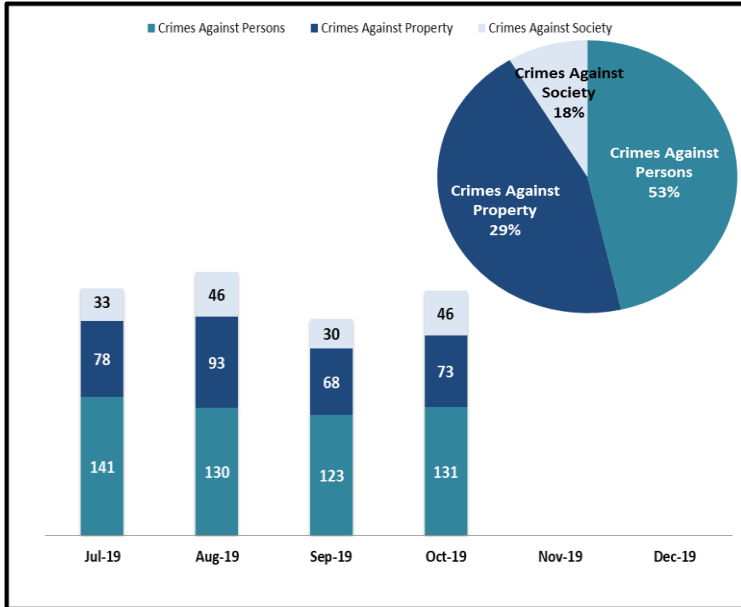


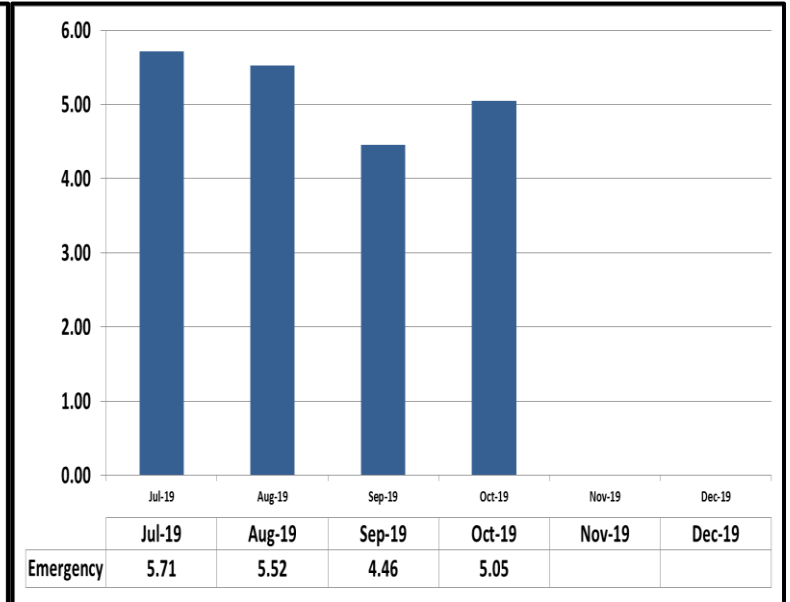
KEY PERFORMANCE INDICATORS

OCTOBER 2019

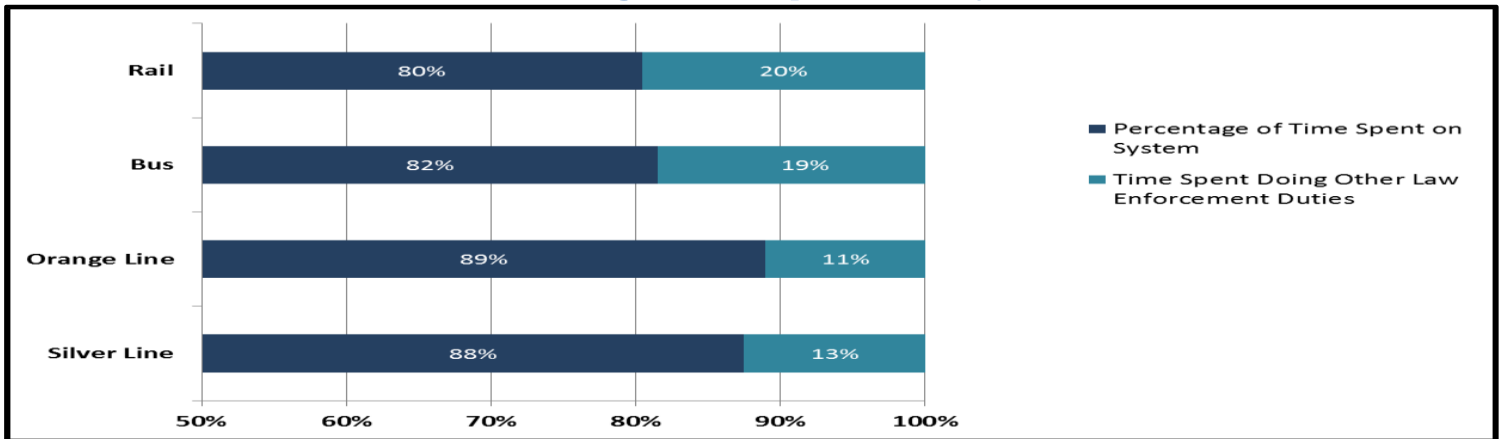
Crimes Against Persons, Property, and Society



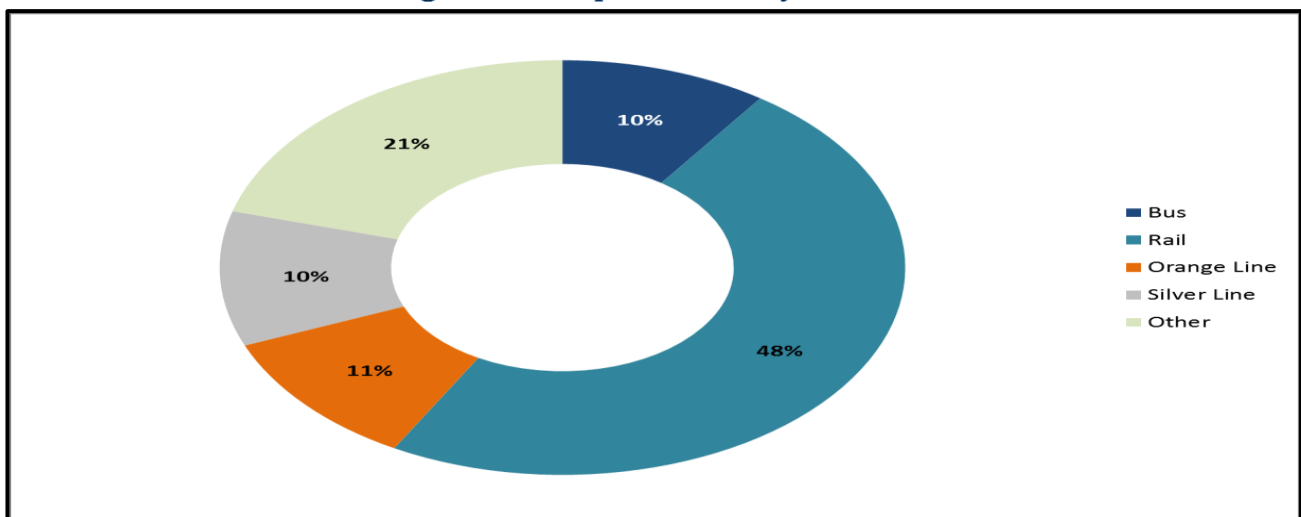
Average Emergency Response Times



Percentage of Time Spent on the System



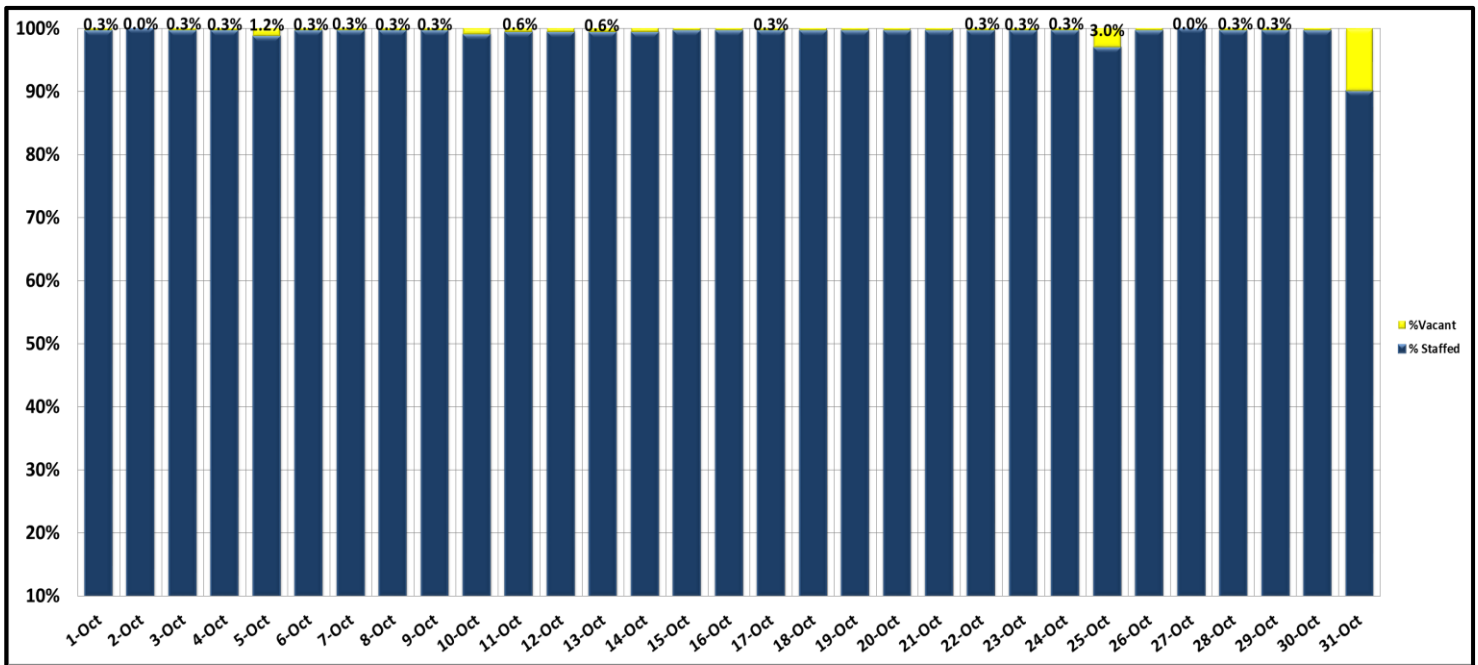
Percentage of Time Spent on the System as a Whole



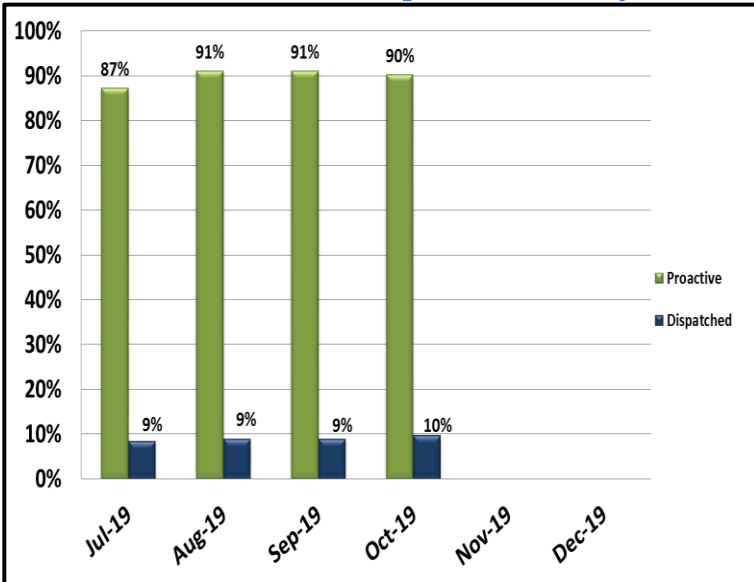
KEY PERFORMANCE INDICATORS

OCTOBER 2019

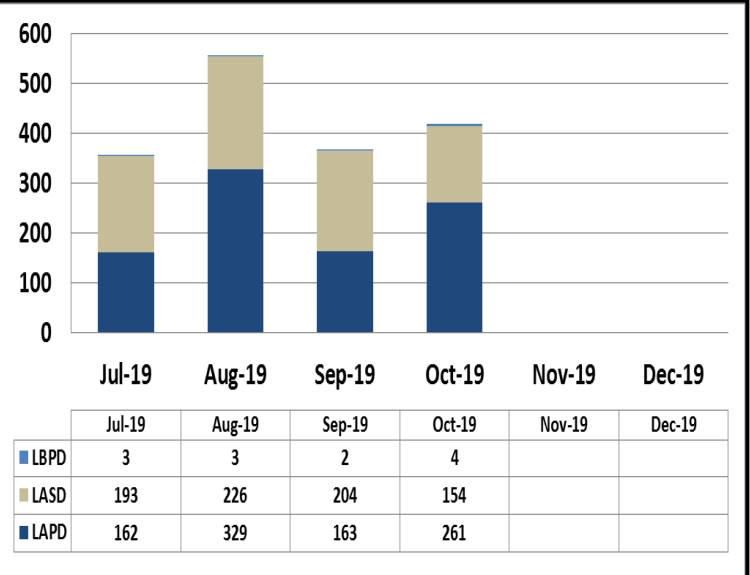
Ratio of Staffing Levels vs Vacant Assignments



Ratio of Proactive vs Dispatched Activity



Grade Crossing Operations



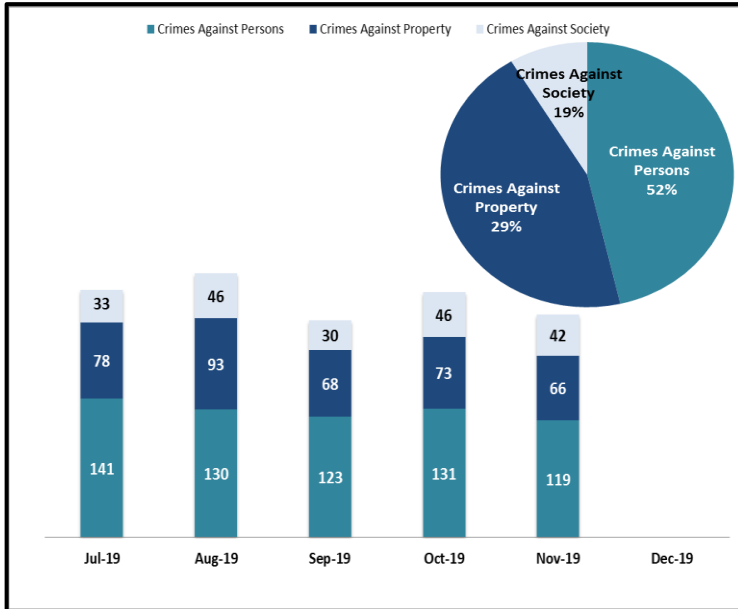
Grade Crossing Operation Locations October:

1. Blue Line Stations (103)
2. Expo Line Stations (138)
3. Gold Line Stations (178)

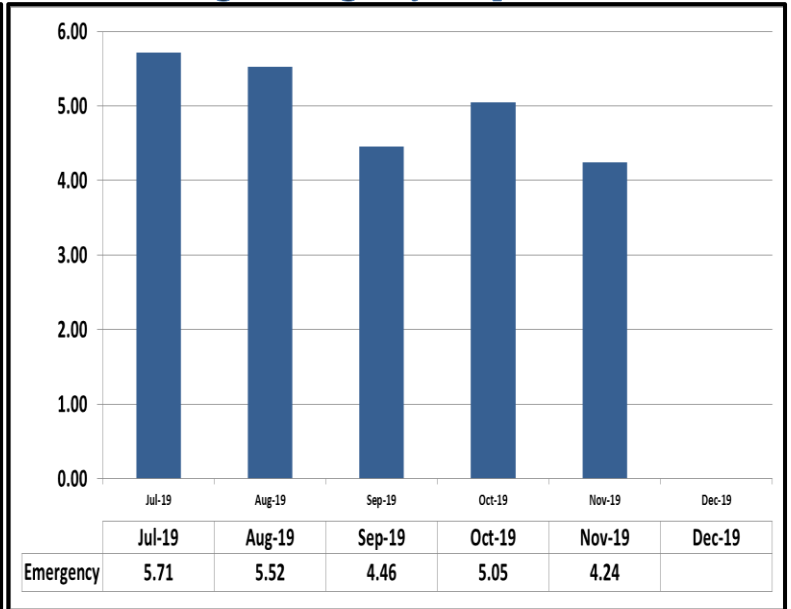
KEY PERFORMANCE INDICATORS

NOVEMBER 2019

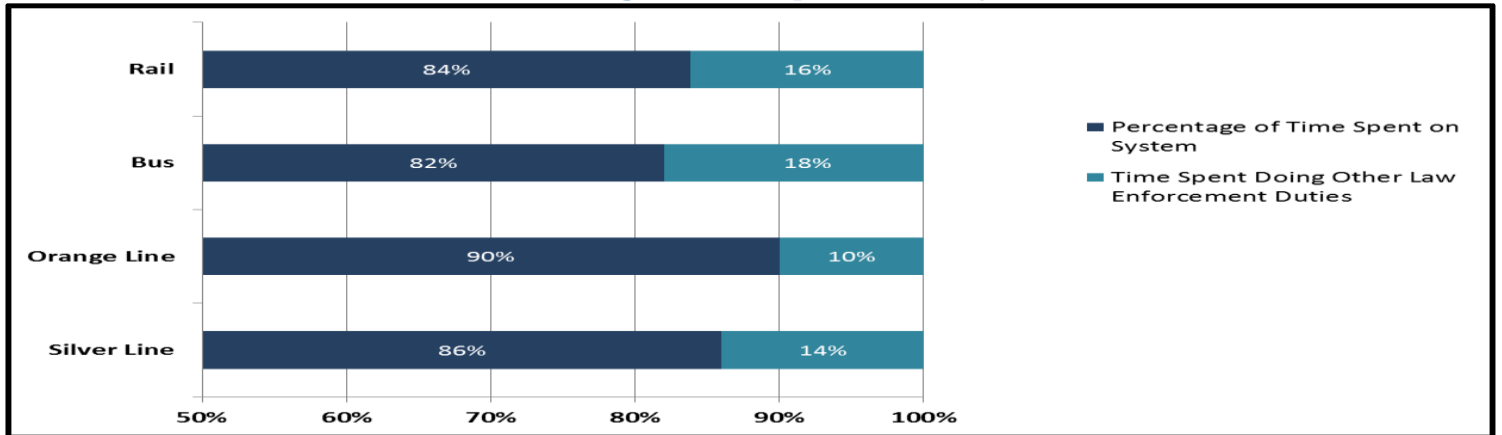
Crimes Against Persons, Property, and Society



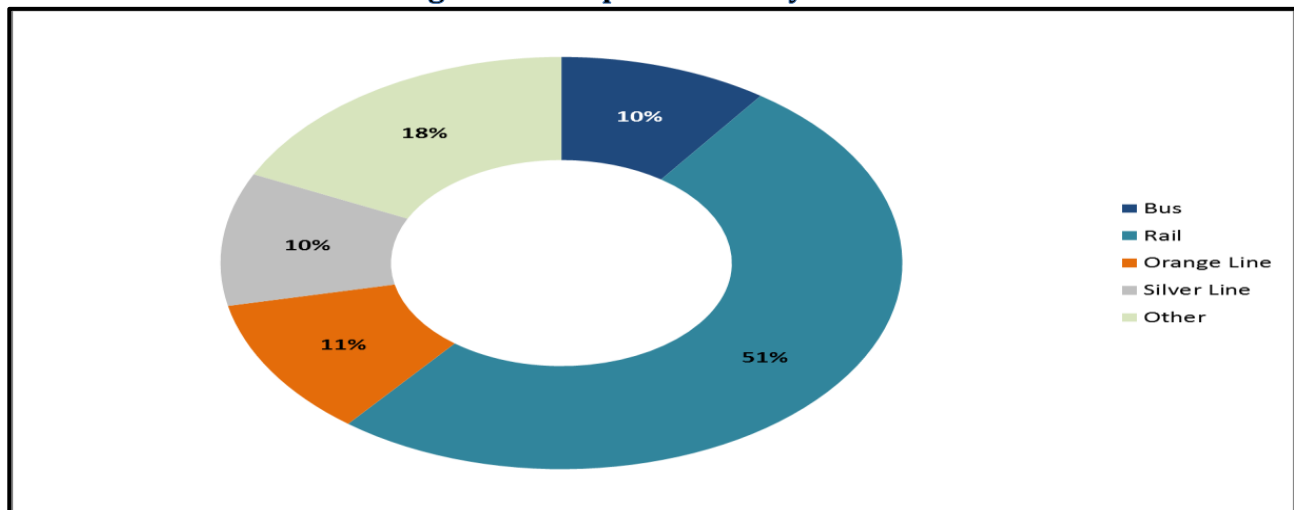
Average Emergency Response Times



Percentage of Time Spent on the System



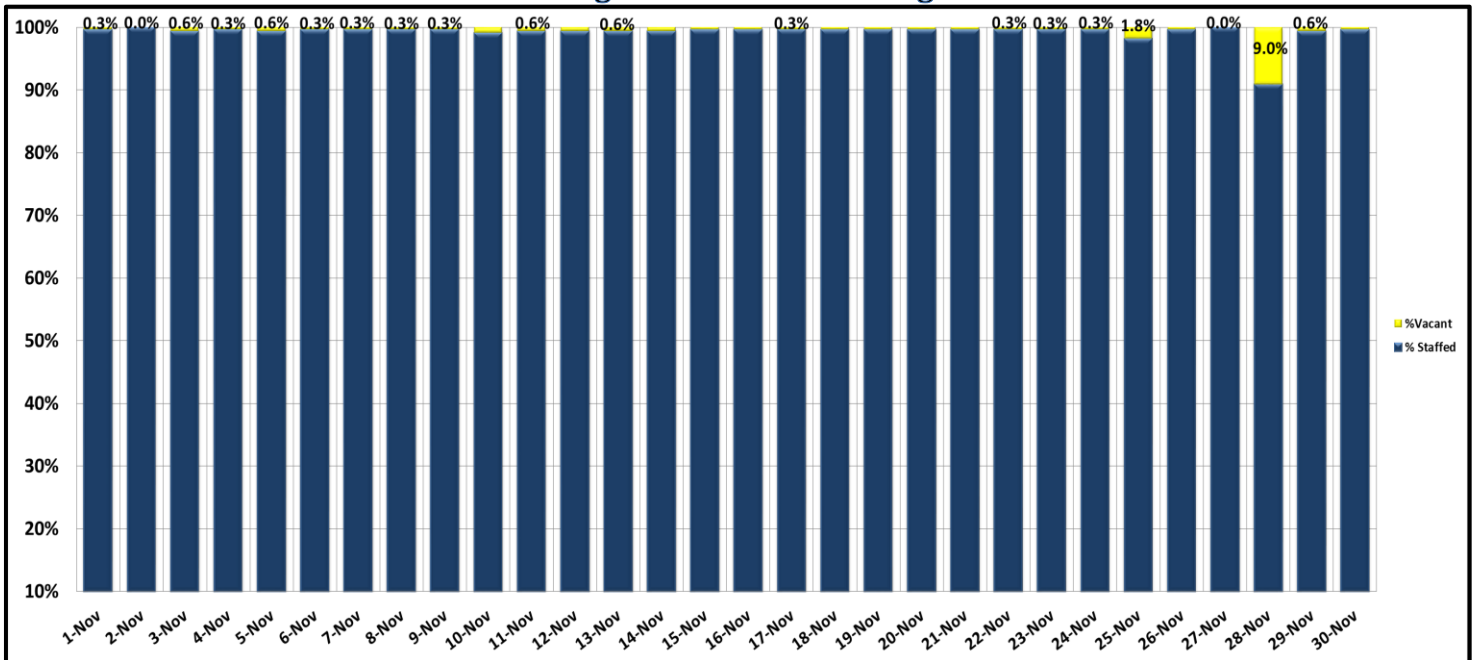
Percentage of Time Spent on the System as a Whole



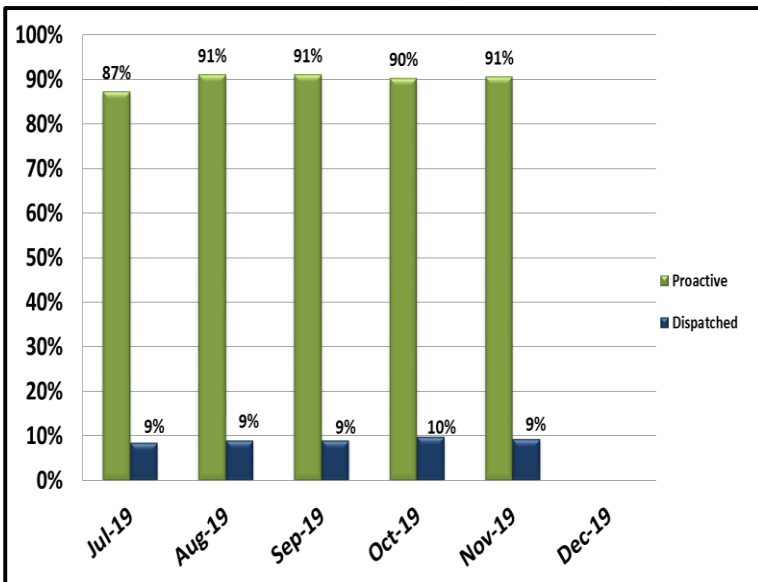
KEY PERFORMANCE INDICATORS

NOVEMBER 2019

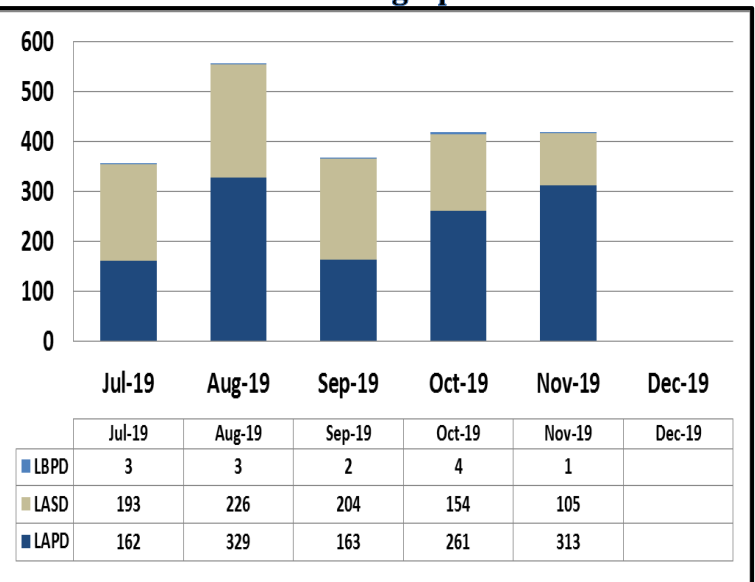
Ratio of Staffing Levels vs Vacant Assignments



Ratio of Proactive vs Dispatched Activity



Grade Crossing Operations



Grade Crossing Operation Locations November:

1. Blue Line Stations (106)
2. Expo Line Stations (141)
3. Gold Line Stations (172)