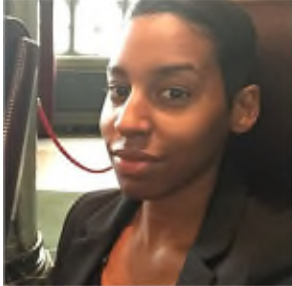


NEW APPOINTEE BIOGRAPHY AND QUALIFICATIONS

Erin Nash, Nominee for San Fernando Valley Service Council



Erin Nash is a resident of Arleta and currently works in the City of Los Angeles Department of City Planning as a Planning Assistant, where she performs research and analysis on existing land uses, existing conditions, development patterns, and prominent design characteristics, as well as review and preparation of environmental documents. Prior to joining the Department of City Planning, Ms. Nash has worked as a Council Deputy to Los Angeles City Councilmembers Curran D. Price Jr. and Felipe Fuentes. She has also served as an Assembly District Delegate (AD 39) for the California Democratic Party and a Board Member with Los Angeles County Young Democrats.

Ms. Nash holds a Master of Public Administration in Public Policy Analysis from California State University – Northridge (CSUN) and a Bachelor of Arts in Communications, also from CSUN. Erin is also a member of the Los Angeles African American Public Policy Institute.