

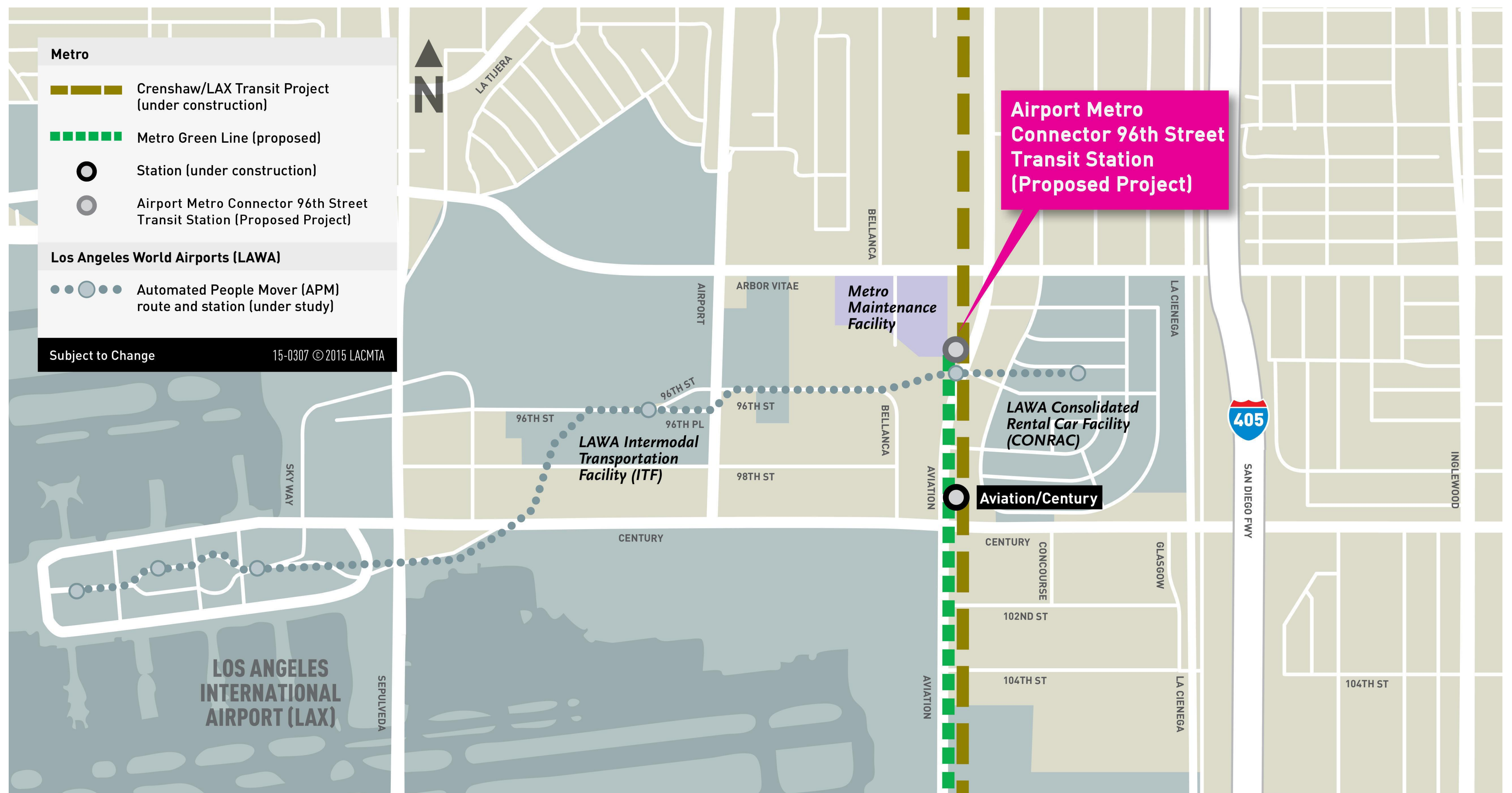
Project Overview

- June 26, 2014: Metro Board approved a new station on Crenshaw/LAX Line at 96th Street/Aviation Boulevard as Locally Preferred Alternative.
 - Staff initiated work on Draft Environmental Impact Report (EIR)
- February 6, 2015: Notice of Preparation (NOP) issued for the Draft EIR
- February 23, 2015: Public Scoping Meeting held for public input on the project and EIR process
- June 22, 2016: Draft EIR released for 46-day public review period (June 22, 2016 to August 6, 2016)
 - Email blasts and "Take One" notices sent to 1000 contacts and 1400 stakeholders
 - 21 online and print ads placed in multiple sources
 - Hard and electronic copies of Draft EIR provided to eight local public libraries
 - July 13, 2015: Held Public Hearing to accept comments on the Draft EIR
- August 6, 2016: End of Public Comment Period with 74 comments received via letters, Facebook, Twitter, project hotline and email
- November 2, 2016: Released Final EIR
- Ongoing coordination with:
 - Los Angeles World Airports (LAWA)
 - Municipal Bus Operators
 - Crenshaw/LAX Project Team
 - Southwestern Maintenance Yard
- Community Outreach



Metro[®]

Project Overview

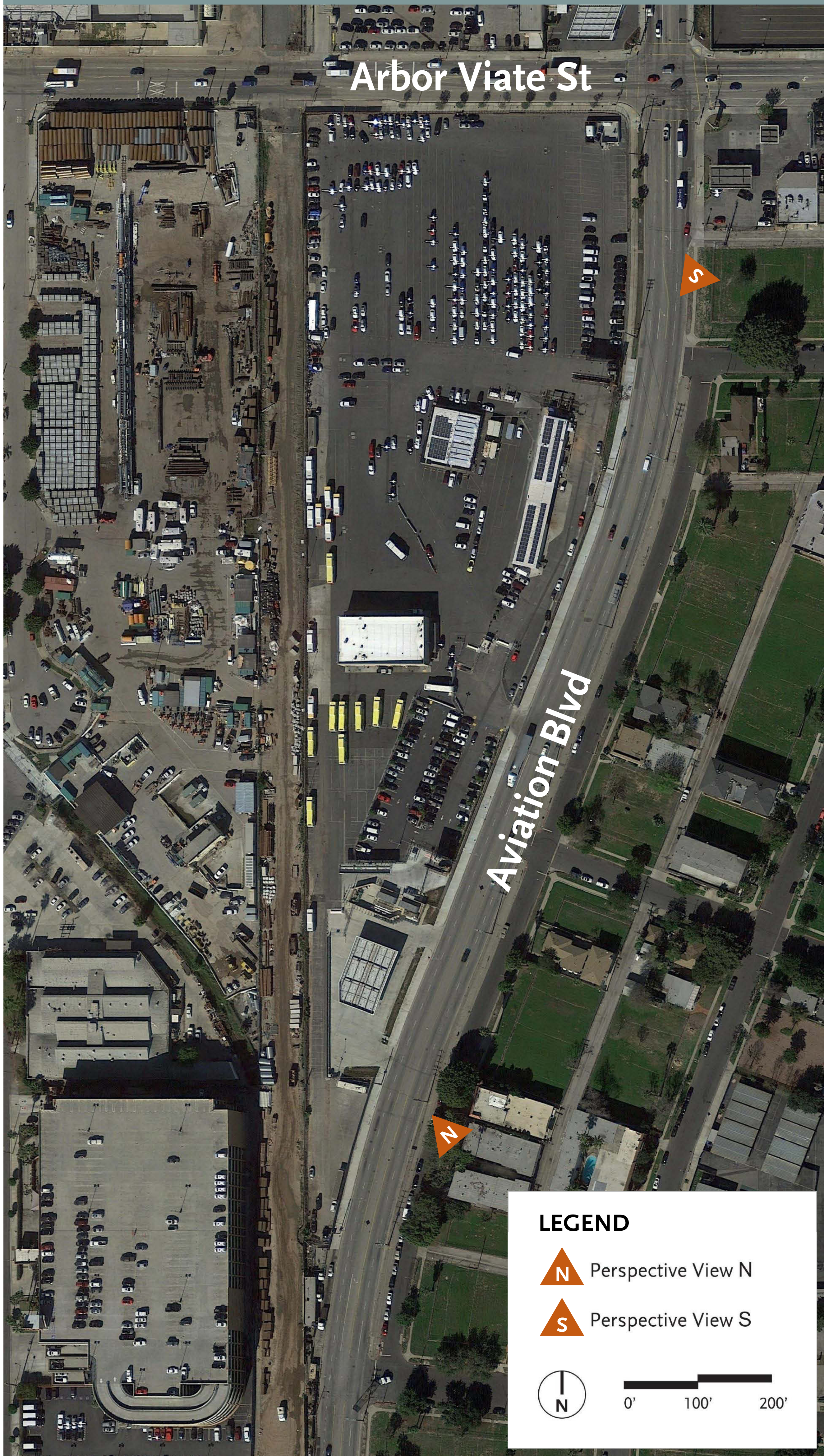


Project components:

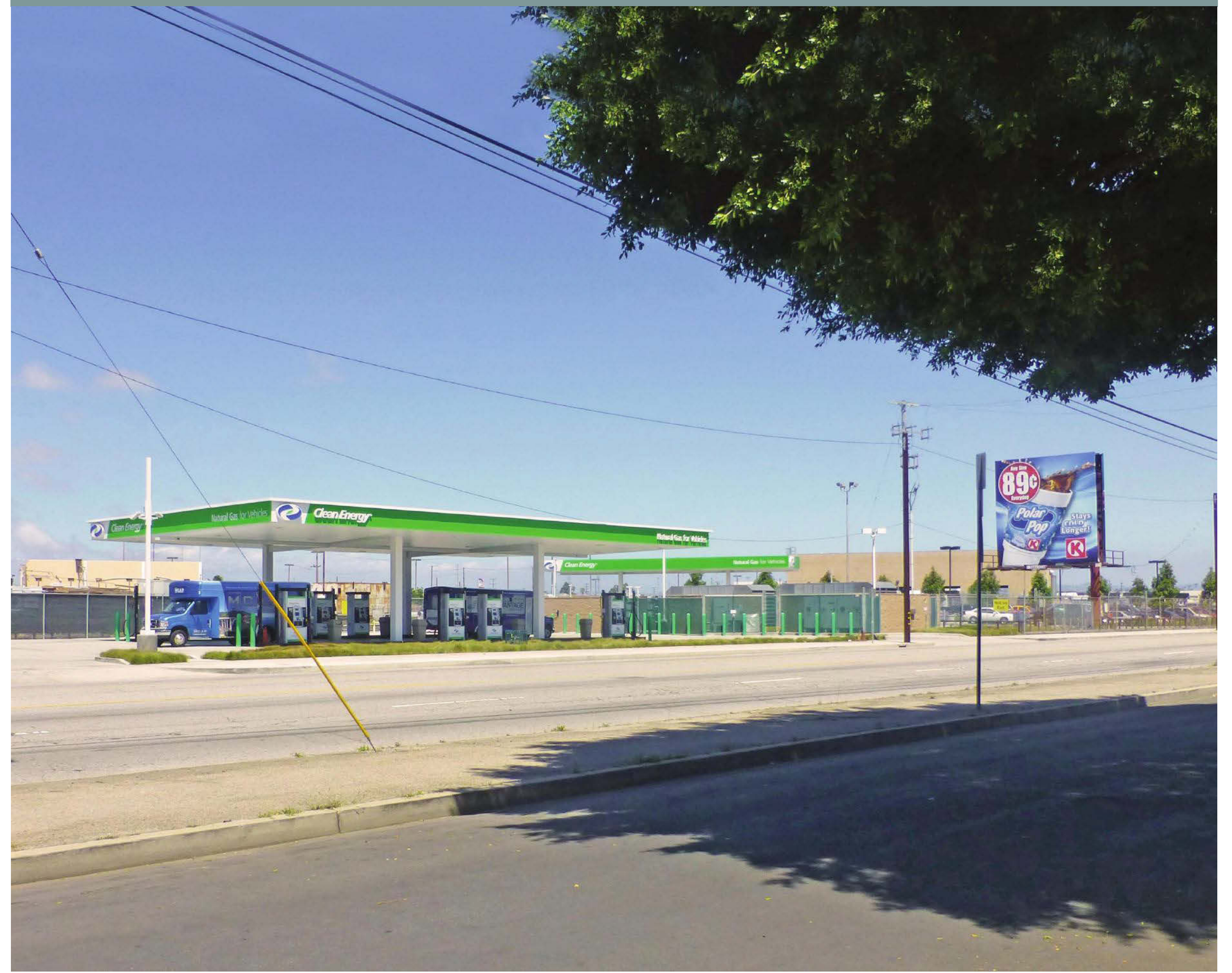
- Three at-grade Light Rail Transit (LRT) platforms to be served by the Crenshaw/LAX Line and Metro Green Line service extension
- Bus plaza and terminal facility for Metro and municipal bus operators;
- Bicycle hub with secured parking for up to 150 bicycles;
- Pedestrian plaza;
- Passenger vehicle pick-up and drop-off area; and
- Metro transit center/terminal building (“Metro Hub”) that connects passengers between the various modes of transportation including the future Automated People Mover (APM) to be built and operated by LAWA

Existing Conditions

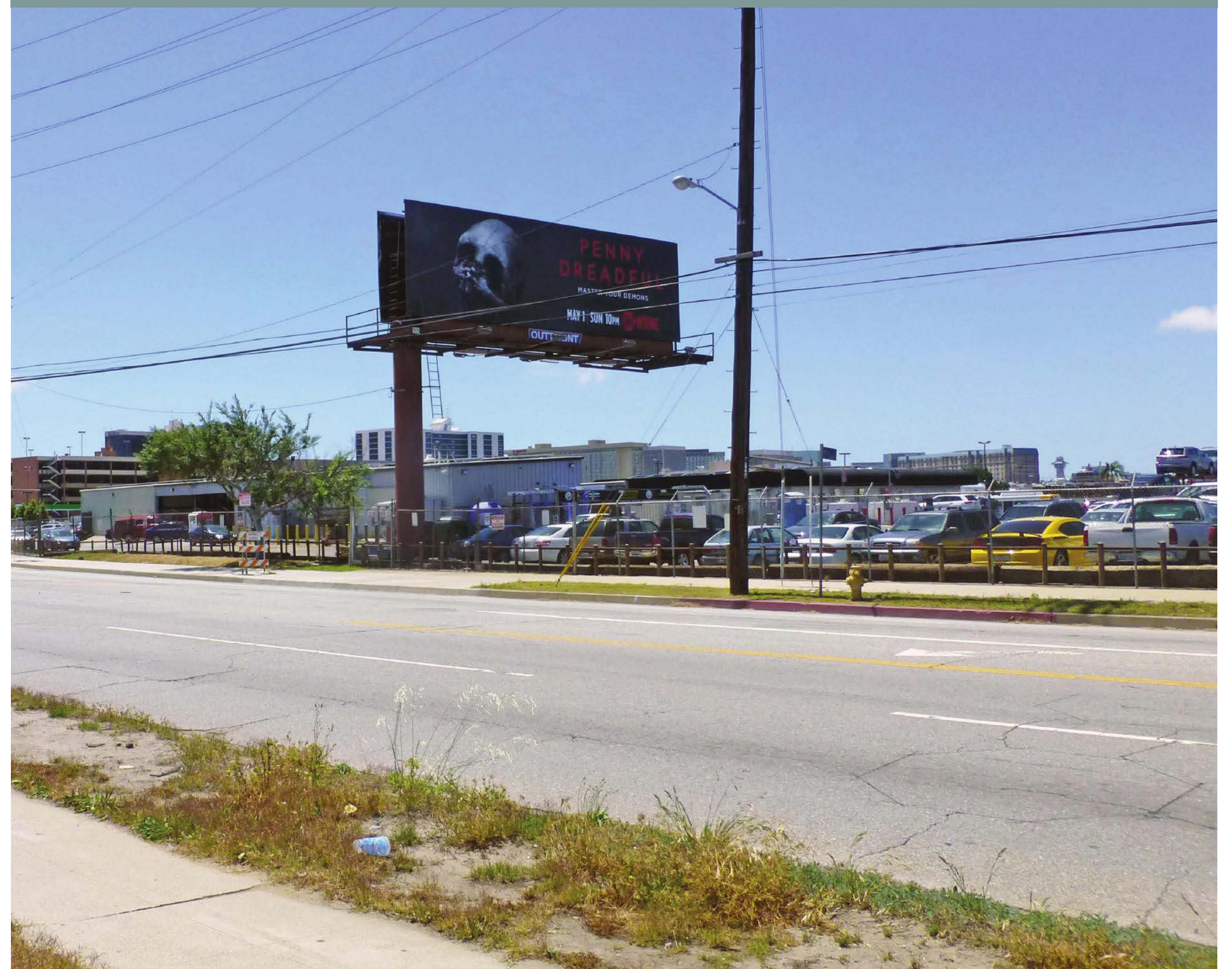
Aerial View



View N – Looking North

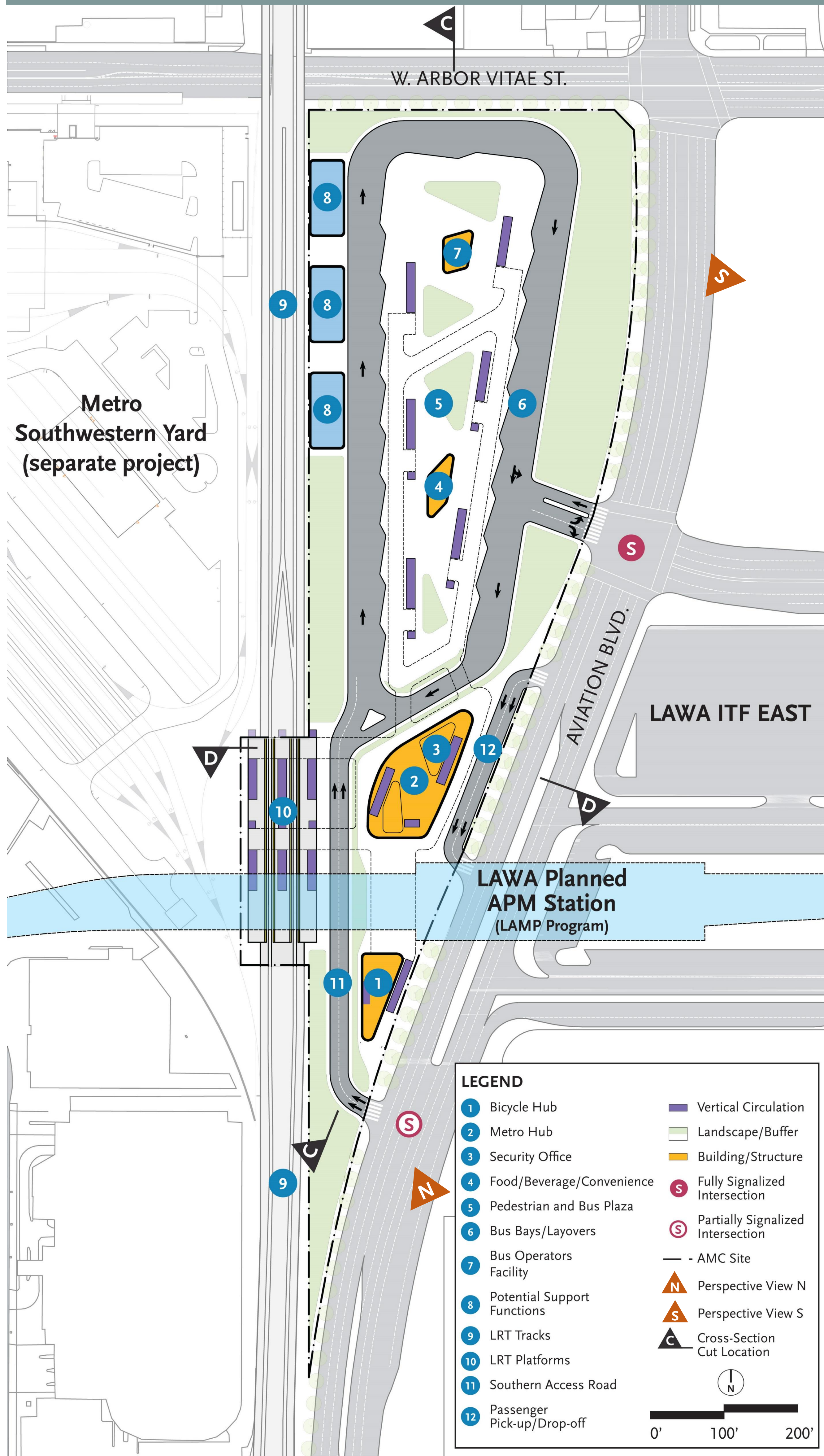


View S – Looking South



Cumulative: Proposed Project with LAWA APM

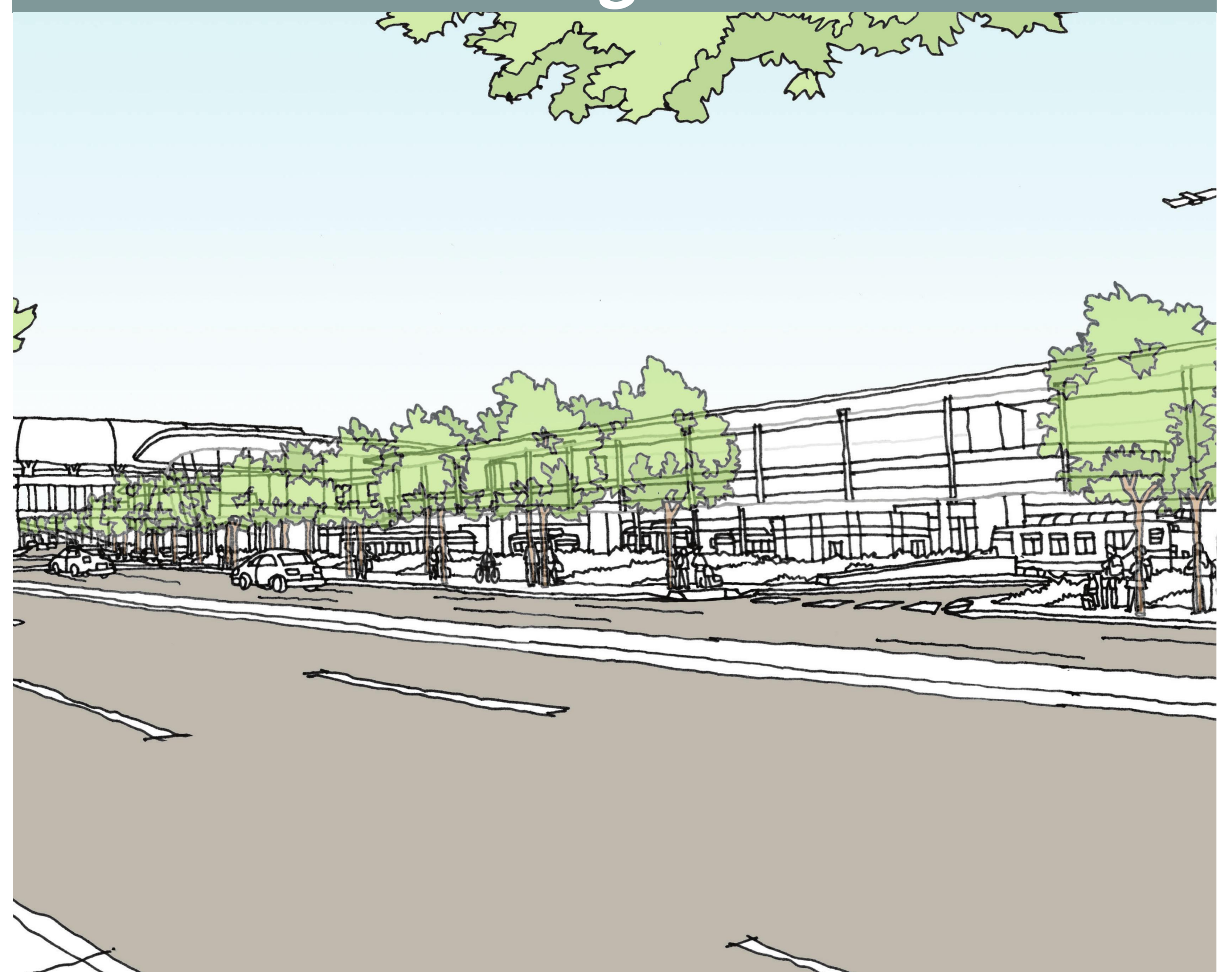
Ground-Level Conceptual Site Plan



Conceptual Perspective View N – Looking North

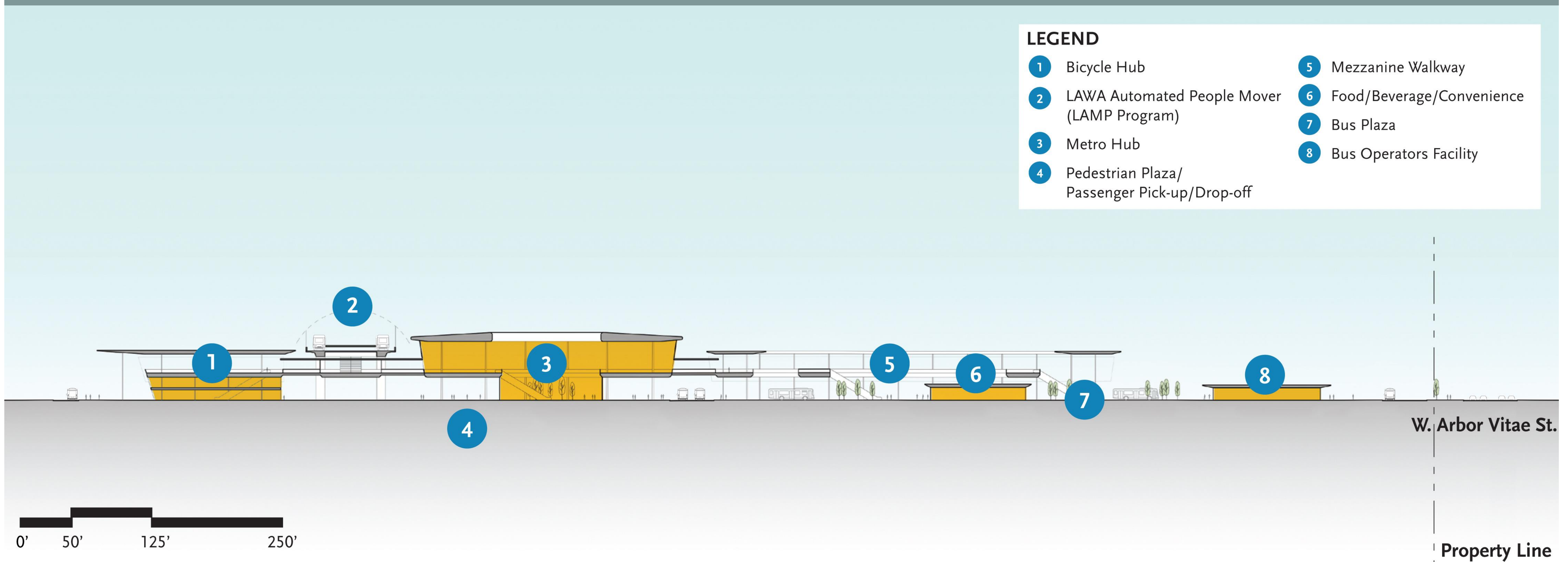


Conceptual Perspective View S – Looking South



Cumulative: Proposed Project with LAWA APM

Conceptual Cross-Section C-C (Looking West)



Conceptual Cross-Section D-D (Looking South)

