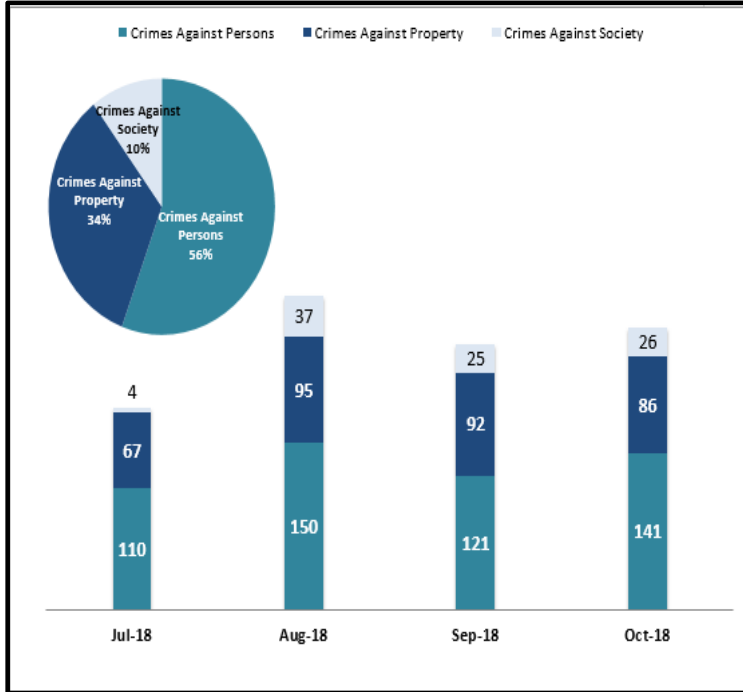


SYSTEM-WIDE LAW ENFORCEMENT OVERVIEW

OCTOBER 2018

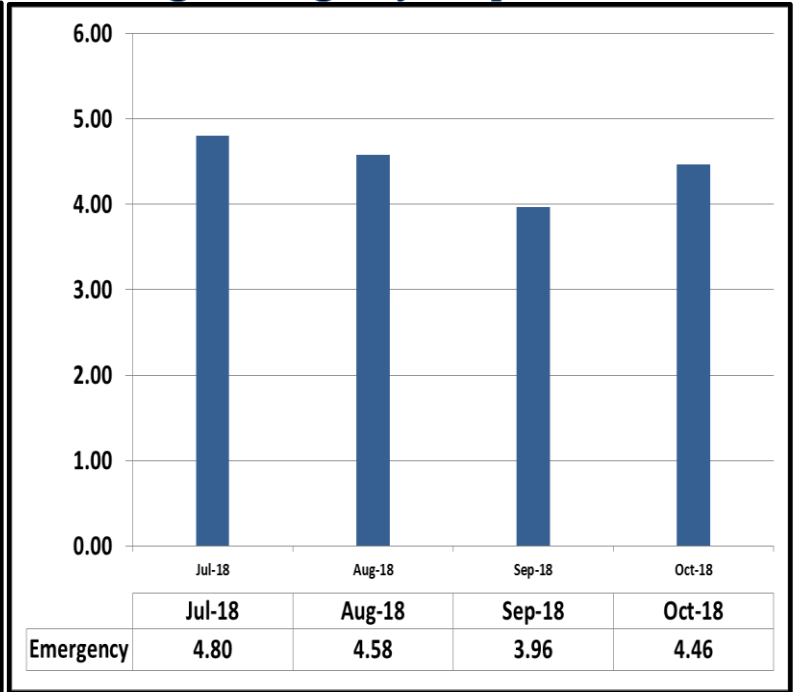
Attachment A

Crimes Against Persons, Property, and Society



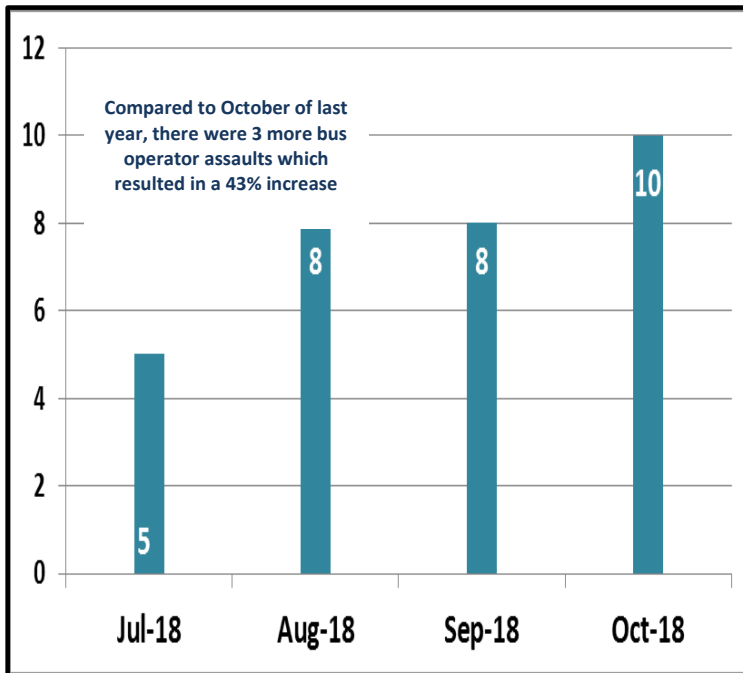
When compared to the same period last year, Crimes Against Persons decreased by 10.2%, Crimes Against Property decreased by 30.1%, and Crimes Against Society increased by 225%.

Average Emergency Response Times



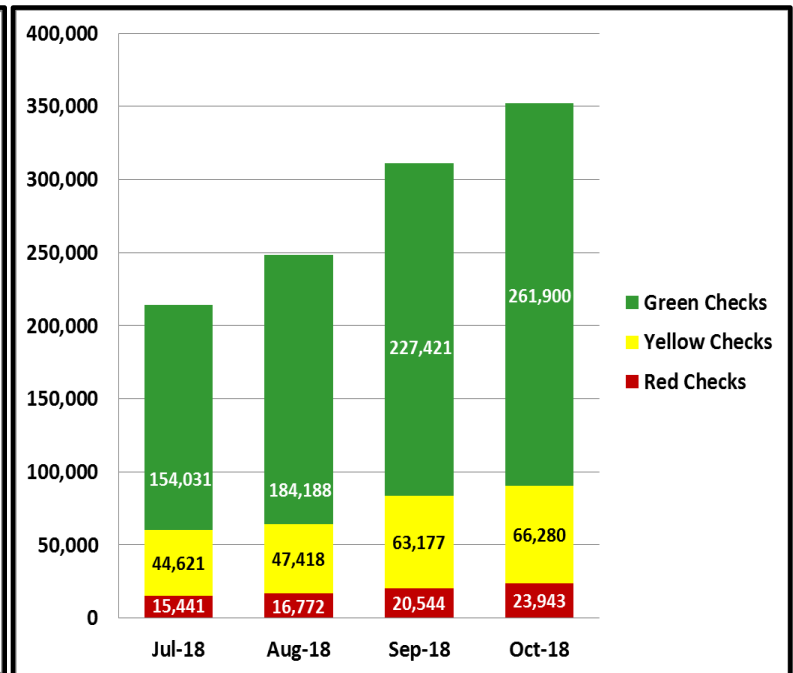
Average emergency response times were 4.46 mins.

Bus Operator Assaults



For the month of October 2018, bus operator assaults increased by 43% compared to the same period last year.

Fare Compliance



Green Checks- Occurs when a patron has valid fare

Yellow Checks- Occurs when a patron has valid fare, but did not tap at transfer station

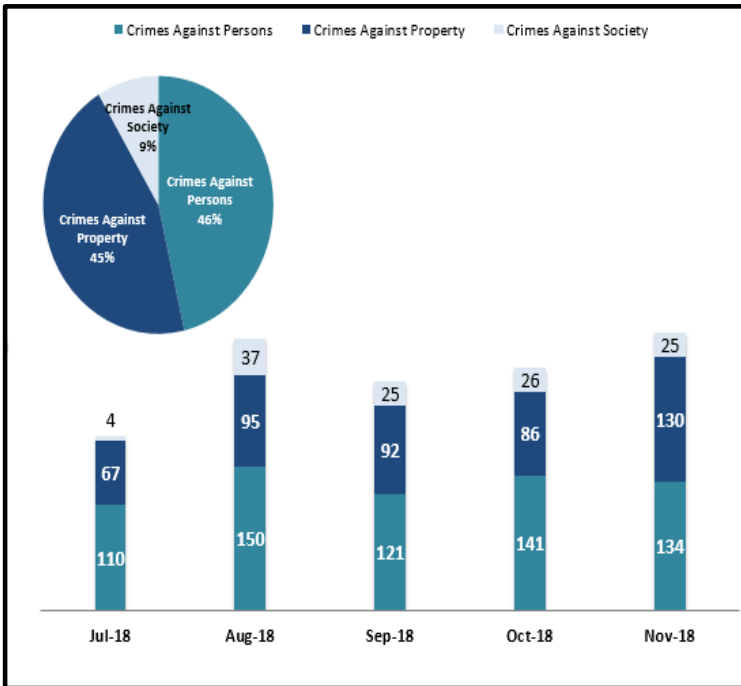
Red Checks- Occurs when a patron has invalid fare

SYSTEM-WIDE LAW ENFORCEMENT OVERVIEW

NOVEMBER 2018

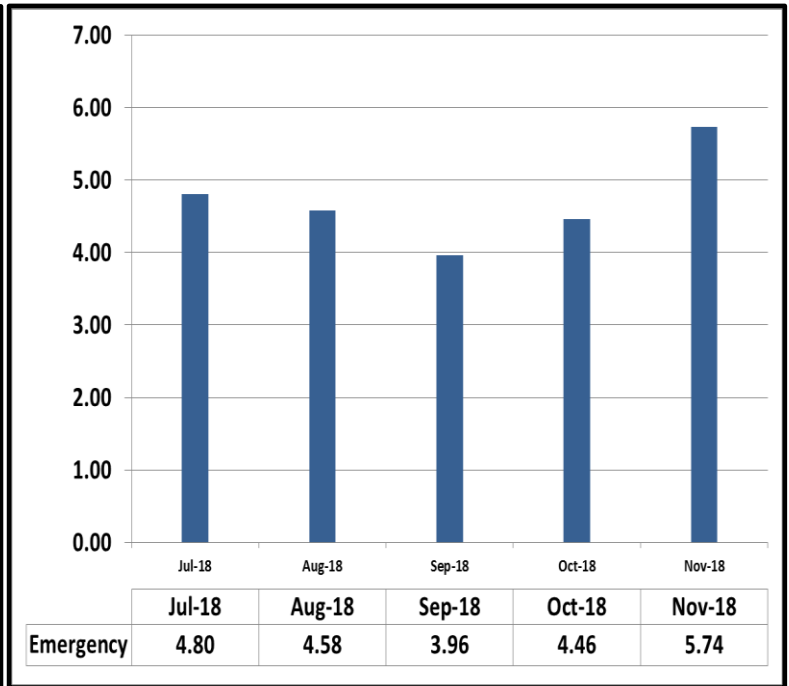
Attachment A

Crimes Against Persons, Property, and Society



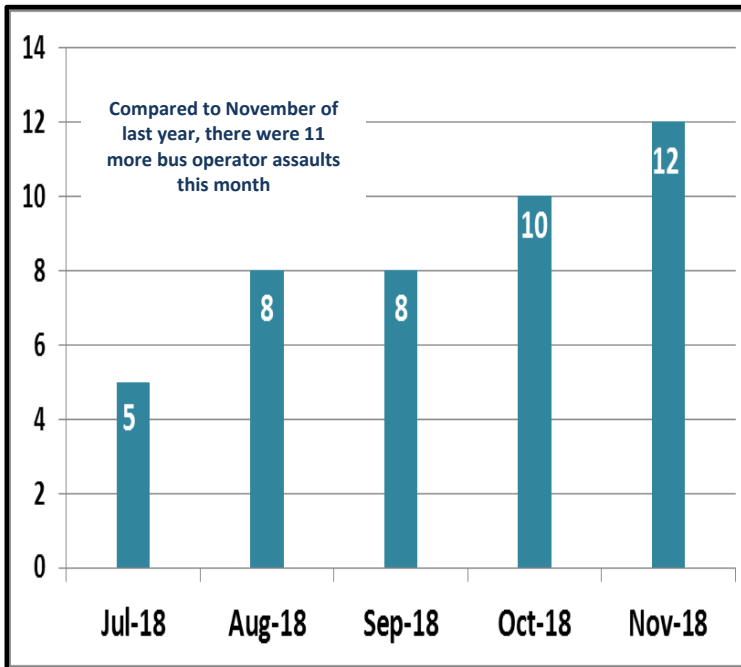
When compared to the same period last year, Crimes Against Persons increased by 9.8%, Crimes Against Property increased by 25%, and Crimes Against Society increased by 400%.

Average Emergency Response Times



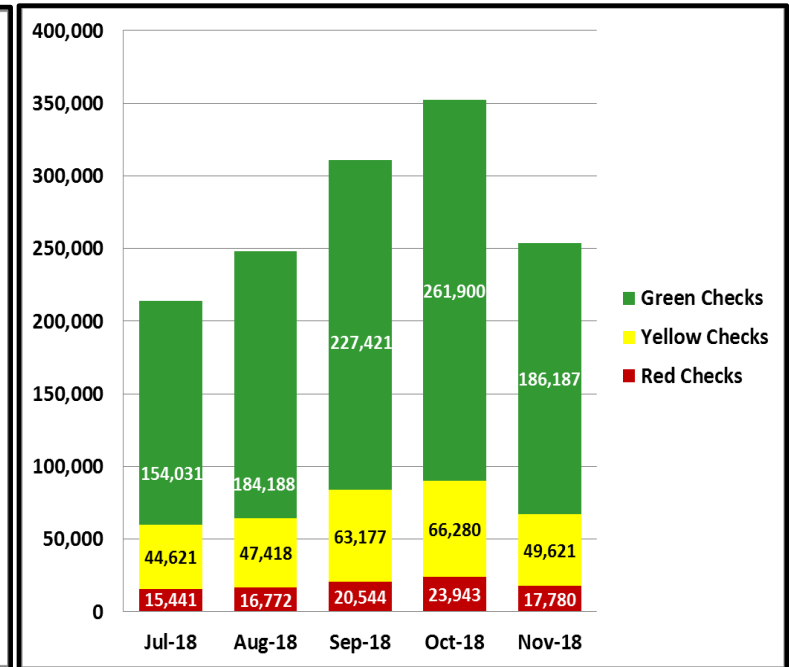
Average emergency response times were 5.74 mins.

Bus Operator Assaults



For the month of November 2018, bus operator assaults increased by 1,100% compared to the same period last year.

Fare Compliance



Green Checks- Occurs when a patron has valid fare

Yellow Checks- Occurs when a patron has valid fare, but did not tap at transfer station

Red Checks- Occurs when a patron has invalid fare