

Program Management Major Project Status Report

Presented By

Richard Clarke

Chief Program Management Officer



March 2018

Construction Committee

Los Angeles County Metropolitan Transportation Authority



PROJECT BUDGET & SCHEDULE STATUS SUMMARY CHART

Project	Cost Performance	Schedule Performance	Comments
Crenshaw/LAX			The remaining cost contingency is below 2% of the total project budget (\$38 million in contingency remains). Contractor is 40 days behind schedule and is required to mitigate schedule to maintain planned revenue service in October 2019.
Regional Connector			Project is 46% complete and proceeding on schedule forecast and within Life of Project budget.
Westside Purple Line Extension-Section 1			Project is 31% complete with no significant issues.
Westside Purple Line Extension-Section 2			Project is 6% complete with no significant issues.
Westside Purple Line Extension-Section 3			Requested entry into the Engineering Phase from the FTA in April 2017. Sent request for Letter of No Prejudice (LONP) for the tunnel contract to FTA in September 2017. Awaiting FTA approvals. C1153 Advanced Utility Relocations (AUR) Contract – Notice to Proceed (NTP) was issued on January 2, 2018
Patsaouras Plaza			Project is 50% complete with approval of substantial completion date of December 2018.
Willowbrook/Rosa Parks Station			Design activities are complete. Early Start Phase (Package E) contract awarded, second contract (Package A and C) in procurement process.
Metro Blue Line Projects			Pedestrian Swing Gate project 93% complete. Experiencing delays from Union Pacific Rail Road. MBL Signal Rehab project design work is at 60% complete. City of Long Beach Fare Gates infrastructure design 100% complete for two stations.

March 2018



On target



Possible problem



Major issue



Metro 2

Construction Committee

Los Angeles County Metropolitan Transportation Authority

TRANSIT MASTER SCHEDULE (Page 1 of 2)

TASK filters: Code Cleanup_1, Name contains, Show on Master Schedule, WBS Categories_WBS				* 00 Master Program (By Phase) no contin													16-Feb-18	
Activity Name	PMIS Project Manager	Start	Finish	FY2017	FY2018	FY2019	FY2020	FY2021	FY2022	FY2023	FY2024	FY2025	FY2026	FY2027	FY2028	FY2029	FY2030	FY2031
				2017	2018	2019	2020	2021	2022	2023	2024	2025	2026	2027	2028	2029	2030	2031
Transit Projects		01-Mar-07 A	26-Jun-57															
Environmental		01-Mar-07 A	26-Jun-57															
North San Fernando Valley BRT Improvements	Cencic	04-Jan-17 A	02-Jun-25															
North Hollywood to Pasadena BRT	Richmai	30-Jan-15 A	02-Sep-25															
Orange Line Grade Separations	Patel	23-May-16 A	30-Jun-25															
East San Fernando Valley Transit Corridor	Davis	11-Oct-10 A	06-Jul-29															
Vermont BRT Corridor	Cencic	30-Jan-15 A	07-Aug-29															
Crenshaw Northern Extension	Moosavi	09-Feb-18	17-Jun-47															
West Santa Ana Transit Corridor	Pan	01-Oct-09 A	09-Nov-28															
Sepulveda Phase 1 - Express Lanes	Wong	20-Feb-18	10-Nov-26															
Sepulveda Phase 2 - Transit Corridor	Zelmer	26-Apr-17 A	24-Apr-37															
Sepulveda Phase 3 - Westwood to LAX	Mieger	26-Apr-17 A	26-Jun-57															
South Bay Green Line Ext. Crenshaw Blvd in Tor	Khanna	23-Mar-17 A	15-May-30															
Eastside Transit Corridor Phase 2 (1 Align)	Liu	01-Mar-07 A	08-Nov-35															
Design	Zelmer	04-Oct-10 A	29-Dec-23															
Airport Metro Connector	Zelmer	04-Oct-10 A	29-Dec-23															
Procurement		02-Oct-13 A	25-Mar-27															
Purple Line Extension Section 3	McKenna	29-Feb-16 A	04-Mar-26															
Gold Line Foothill Extension Phase 2B	Meade	02-Oct-13 A	25-Mar-27															
Construction Contract		01-Jun-07 A	30-Aug-25															
Crenshaw/LAX Transit Corridor	Beauvoir	01-Jul-09 A	06-Dec-19															
Regional Connector Transit Corridor	Baker	26-Jan-09 A	27-Nov-21															
Purple Line Extension Section 1	Cohen	01-Jun-07 A	29-Nov-23															
Purple Line Extension Section 2	McKenna	02-Mar-15 A	30-Aug-25															
Transit Facilities		07-May-15 A	16-Jun-23															
Design	Meade	16-May-16 A	16-Jun-23															
Div 20 Portal/Turnback	Meade	16-May-16 A	16-Jun-23															
Construction Contract	Lindholm	07-May-15 A	30-Dec-20															



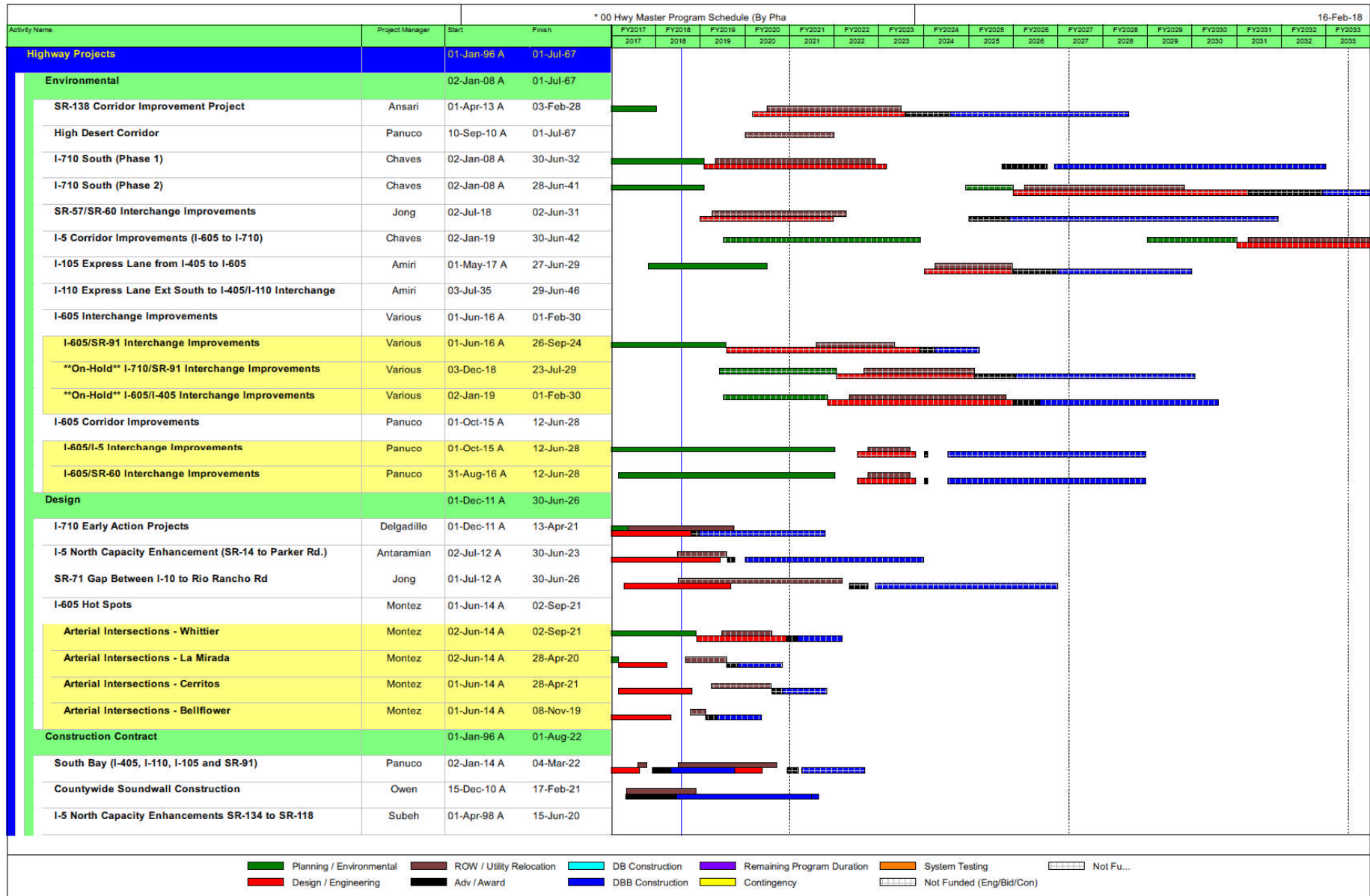
TRANSIT MASTER SCHEDULE (Page 2 of 2)

TASK filters: Code Cleanup_1, Name contains, Show on Master Schedule, WBS Categories_WBS				* 00 Master Program (By Phase) no contin													16-Feb-18	
Activity Name	PMIS Project Manager	Start	Finish	FY2017	FY2018	FY2019	FY2020	FY2021	FY2022	FY2023	FY2024	FY2025	FY2026	FY2027	FY2028	FY2029	FY2030	FY2031
				2017	2018	2019	2020	2021	2022	2023	2024	2025	2026	2027	2028	2029	2030	2031
Willowbrooks/Rosa Parks Station Improvement	Lindholm	07-May-15 A	30-Dec-20															
Regional Rail Projects	Owens	02-Sep-13 A	24-Jun-27															
Environmental	Owens	01-Dec-14 A	24-Jun-27															
Link Union Station	Owens	01-Dec-14 A	24-Jun-27															
Design	Owens	01-Apr-15 A	02-May-22															
Brighton to Roxford Double Track	Owens	01-Sep-15 A	28-Jan-22															
Lone Hill to CP White	Owens	03-May-16 A	02-May-22															
Rosecrans & Marquardt Grade Separation	Owens	01-Apr-15 A	14-Sep-21															
Construction Contract	Owens	02-Sep-13 A	01-Jun-18															
Bob Hope Airport Station	Owens	02-Sep-13 A	01-Jun-18															
Bus Facilities Projects	Gurrola	31-Mar-14 A	14-Feb-19															
Construction Contract	Gurrola	31-Mar-14 A	14-Feb-19															
Patsouras Plaza	Gurrola	31-Mar-14 A	14-Feb-19															
State of Good Repair/Improvements		01-Jul-13 A	30-Dec-19															
Design		21-Sep-15 A	30-Dec-19															
210 Freeway Barrier Rail	Danielians	13-Jun-16 A	28-Jun-19															
MBL Resignaling	Wei	21-Sep-15 A	30-Dec-19															
Construction Contract		01-Jul-13 A	30-Mar-18															
Pershing Sq. Esc. Replace & New Canopy Project	Patel	11-May-15 A	31-Aug-17 A															
MBL Ped Safety Enhancement At-Grade Crossing	Chong	01-Jul-13 A	30-Mar-18															
Small Capital		01-Mar-16 A	07-Mar-22															
Design	Joshi	01-Mar-16 A	07-Mar-22															
Eastside Access Improvement Project	Joshi	01-Mar-16 A	07-Mar-22															
Procurement	Gurrola	16-Jan-18	28-Feb-20															
Rail to Rail	Gurrola	16-Jan-18	28-Feb-20															

■ Planning / Environmental
 ■ ROW / Utility Relocation
 ■ DB Construction
 ■ System Testing
 Not Funded (Env/ROW/Test)

■ Design / Engineering
 ■ Adv / Award
 ■ DBB Construction
 Not Funded (Eng/Bid/Con)

HIGHWAY MASTER SCHEDULE (Page 1 of 2)



HIGHWAY MASTER SCHEDULE (Page 2 of 2)

				* 00 Hwy Master Program Schedule (By Pha)																	16-Feb-18
Activity Name	Project Manager	Start	Finish	FY2017	FY2018	FY2019	FY2020	FY2021	FY2022	FY2023	FY2024	FY2025	FY2026	FY2027	FY2028	FY2029	FY2030	FY2031	FY2032	FY2033	
				2017	2018	2019	2020	2021	2022	2023	2024	2025	2026	2027	2028	2029	2030	2031	2032	2033	
SR-118 to SR-170 (Segment 1A)	Subeh	30-Jul-99 A	15-Jul-16 A																		
SR-170 to Buena Vista (Segments 2)	Subeh	01-Apr-98 A	16-Dec-15 A																		
Magnolia to SR-134 (Segment 4)	Subeh	01-Apr-98 A	18-Dec-19																		
Buena Vista to Magnolia (Segment 3)	Subeh	01-Apr-98 A	15-Jun-20																		
I-5 South Capacity Enhancements from I-605 to Orange Cou	Gau	01-Jan-96 A	01-Aug-22																		
I-5 Carmenita Road Interchange	Gau	01-Jan-01 A	20-Mar-18																		
Alondra (Segment 1)	Gau	01-Jan-01 A	19-May-16 A																		
Imperial Highway (Segment 4)	Gau	01-Jan-01 A	26-Jul-19																		
Shoemaker - Rosecrans (Segment 3)	Gau	01-Jan-96 A	28-Nov-18																		
Florence (Segment 5)	Gau	01-Jan-01 A	30-Jul-20																		
Valley View (Segment 2)	Gau	01-Jan-96 A	01-Aug-22																		

■ Planning / Environmental
 ■ ROW / Utility Relocation
 ■ DB Construction
 ■ Remaining Program Duration
 ■ System Testing
 Not Fu...

■ Design / Engineering
 ■ Adv / Award
 ■ DBB Construction
 ■ Contingency
 Not Funded (Eng/Bid/Con)

CRENSHAW/LAX TRANSIT PROJECT

◆ BUDGET		
	Current	Forecast
TOTAL COST	\$2,058M	\$2,058M

◆ SCHEDULE		
	Current	Forecast
REVENUE OPERATION	Oct 2019	Oct 2019

- Overall Project Progress is 78% complete; contractor needs to mitigate 40 day schedule delay
- The Green Line tie-in to Crenshaw/LAX Line continues on schedule for completion by April 7, 2018
- Contractor continues critical track work installation along southern area of alignment
- Contractor continues concrete wall and roof placements for cut-and-cover tunnel and the three underground stations along Crenshaw Boulevard
- The Southwestern Yard Maintenance Facility is progressing ahead of schedule



Initial set-up in progress for Green Line tie-in (facing east)



Setting overhead catenary system poles – south end

March 2018



On target



Possible problem



Major issue


Construction Committee

Los Angeles County Metropolitan Transportation Authority




Metro 7

REGIONAL CONNECTOR TRANSIT PROJECT

 BUDGET	Current	Forecast
TOTAL COST	\$1,810M	\$1,810M

* Includes Board approved LOP plus finance costs.

 SCHEDULE	Current	Forecast
REVENUE OPERATION	Dec 2021	Dec 2021

- Overall Project Progress is 46%
- Tunneling:** excavation of cross passages, and preparation for Mechanical, Electrical, and Plumbing, inverts and walkways underway
- Little Tokyo/Arts District Station:** Permanent station construction re-mobilizing
- Historic Broadway Station:** Underpinning of LA Times Building in progress; station box and ancillary area excavation continues under steady state
- Grand Av Arts/Bunker Hill Station:** Permanent structural concrete construction continues
- Flower Street:** Utility relocations, support of excavation, decking and excavation continue; decking complete from 4th to 6th Street



Tunneling completed January 16, 2018

March 2018



On target



Possible problem



Major issue

Construction Committee

Los Angeles County Metropolitan Transportation Authority



Metro 8

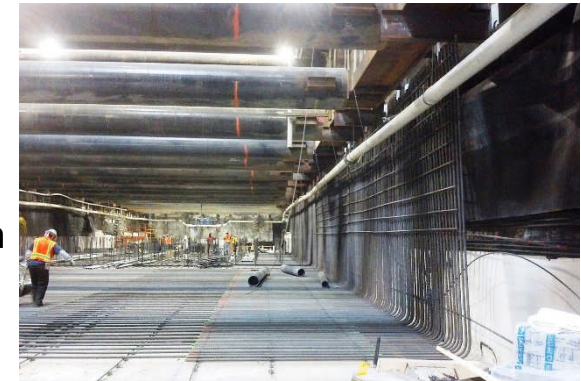
WESTSIDE PURPLE LINE EXTENSION – SECTION 1

OK BUDGET		
	Current	Forecast
TOTAL COST*	\$3,154M	\$3,154M

* Includes Board approved LOP plus Finance costs.

OK SCHEDULE		
	Current	Forecast
REVENUE OPERATION	Oct 2024 (FFGA)	Nov 2023

- Overall Project Progress is 31% complete.
- Support of Excavation (SOE) pile installation at the Wilshire/Western Retrieval Shaft completed on January 19, 2018. Decking in this area commenced in February 2018.
- Wilshire/La Brea Station dewatering activities, grounding grid installation and HDPE installation are ongoing. Rebar installation for the first invert concrete pour started in January 2018.
- At the Wilshire/Fairfax Station, station excavation and the installation of walers and struts are ongoing. Excavation, east of Gridline 11 (west side of the muck shaft), is now clear of the Paleo zone.
- Street decking at Wilshire/La Cienega was completed on January 8, 2018. Hanging of utilities below the deck continues. Work on the electrical vaults inside the La Cienega Station Yard is ongoing.
- Tunnel Boring Machines (TBMs) were delivered to Los Angeles in December 2017. TBM components are being shipped to the contractor's Riverside storage site. Tunneling is planned to start in August 2018.



Wilshire/La Brea Station



TBM/Conveyor Equipment at Wilshire/La Brea Station

March 2018



On target



Possible problem



Major issue

Construction Committee

Los Angeles County Metropolitan Transportation Authority



Metro 9

WESTSIDE PURPLE LINE EXTENSION – SECTION 2

BUDGET

	Current	Forecast
TOTAL COST*	\$2,530M	\$2,530M

* Includes Board approved LOP plus Finance costs.

SCHEDULE

	Current	Forecast
REVENUE OPERATION	Dec 2026 (FFGA)	Aug 2025

- Overall project progress is 6% complete.
- Final design progress is 51% complete.
- Century City Constellation: AT&T and LADWP (Power) utility relocations are ongoing.
- Wilshire/Rodeo: Southern California Edison (SCE) cable pulling and splicing completed on January 30, 2018. Southern California Gas (SCG) and AT&T utility relocations began in February 2018.
- Negotiations with the City of Beverly Hills (COBH) for an Memorandum Of Agreement for the C1120 Contract began in August 2017 and are anticipated to complete by April 2018.



AT&T Conduit Installation in Century City

March 2018



On target



Possible problem



Major issue

Construction Committee

Los Angeles County Metropolitan Transportation Authority



Metro 10

WESTSIDE PURPLE LINE EXTENSION – SECTION 3

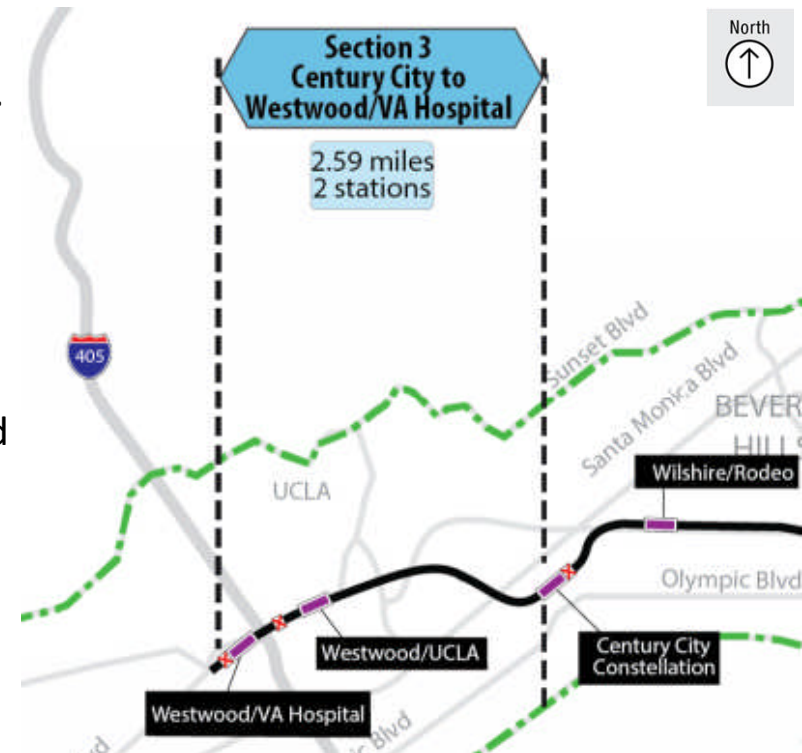
OK BUDGET

	Current	Forecast
TOTAL COST	TBD	\$3,478M

OK SCHEDULE

	Current	Forecast
REVENUE OPERATION	TBD	March 2026

- Request for Letter of No Prejudice (LONP) for the Tunnel Contract was submitted to the FTA on September 11, 2017.
- Construction Management Support Services (CMSS) Contract was executed on November 29, 2017. CMSS is staffing to support the Advanced Utility Relocations (AUR) construction.
- C1151 Tunnel Contract - Technical proposals were received on November 13, 2017, and price proposals are anticipated in early 2018.
- C1152 Stations, Trackwork and Systems Contract - Request for Qualifications (RFQ)/Request for Proposals (RFP) was issued on September 15, 2017. Qualifications from respondents were received on November 20, 2017.
- C1153 Advanced Utility Relocations (AUR) Contract – Notice to Proceed (NTP) was issued on January 2, 2018.



March 2018



On target



Possible problem



Major issue


Construction Committee


Los Angeles County Metropolitan Transportation Authority



Metro 11

PATSAOURAS PLAZA BUSWAY STATION

 BUDGET	Current	Forecast
TOTAL COST	\$39.7M	\$39.7M

 SCHEDULE	Current	Forecast
SUBSTANTIAL COMPLETION	Nov 2018	Dec 2018

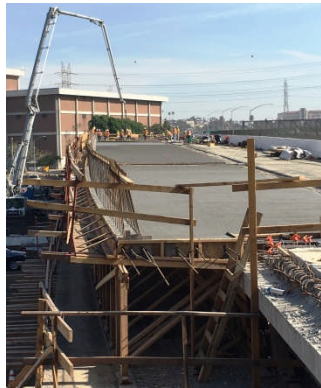
- Native American monitoring continues on construction activities
- Vignes Street on/off-ramp intermittent non-peak closures ongoing
- Pedestrian ramp micropiles and elevator foundation approvals near completion
- Concrete pour over Center Street completed
- Completed concrete deck pours, on 28-day curing period
- Remainder of concrete deck pours to be completed in February
- Working with contractor to expedite negotiated project schedule delays and request for changes



Aerial view of project site



Elevator Foundations



Bridge Deck Pour

March 2018



On target



Possible problem



Major issue



Metro 12

Construction Committee

Los Angeles County Metropolitan Transportation Authority

WILLOWBROOK/ROSA PARKS STATION

OK BUDGET		
	Current	Forecast
TOTAL COST	N/A	\$92.4M

OK SCHEDULE		
	Current	Forecast
SUBSTANTIAL COMPLETION	Dec 2020	Dec 2020

- Early Start Phase (Package E) Construction mobilization has begun.
- Package A and C at 100% design completion. Procurement of this contract is underway. Package includes provisions for the closure of the Blue Line (the New Blue).
- Pedestrian grade crossing documents submitted to Union Pacific and Public Utilities Commission.
- Staff planning to bring Life of Project Budget request to Board in May 2018.



South Platform Improvements



Central Plaza & Bus Bays



Main Plaza

March 2018



On target



Possible problem



Major issue

Construction Committee

Los Angeles County Metropolitan Transportation Authority



Metro 13

THE NEW BLUE

<u>Project Name</u>	Budget	Percent Completed	Forecast Completion	Status
▪ Pedestrian Gates	\$31.4M	93%	June 2018	◆
▪ City of Long Beach Fare Gates Design	\$6M*	100%(Design)	Feb 2018	OK
▪ Blue Line Signal Rehabilitation (OCS, Signals, Div. 11)	\$119M	12%	April 2021	OK
Total: \$156.4M				

Project Status

- **Pedestrian Gates**
 - Construction completed within Cities of Long Beach and Compton
 - Construction within County of LA 93% complete
 - Working with LADOT on temporary Street closures and traffic control plan approvals
 - Commissioning of some gates delays due to UPRR
- **City of Long Beach Fare Gates Design**
 - Design completed on 5th and Wardlow Stations
- **MBL Signal Rehab Design at 60%**



*Budget Estimate

March 2018

OK On target

Possible problem



Major issue

Construction Committee

Los Angeles County Metropolitan Transportation Authority



Metro

Crenshaw/LAX Transit Project

Change Activity

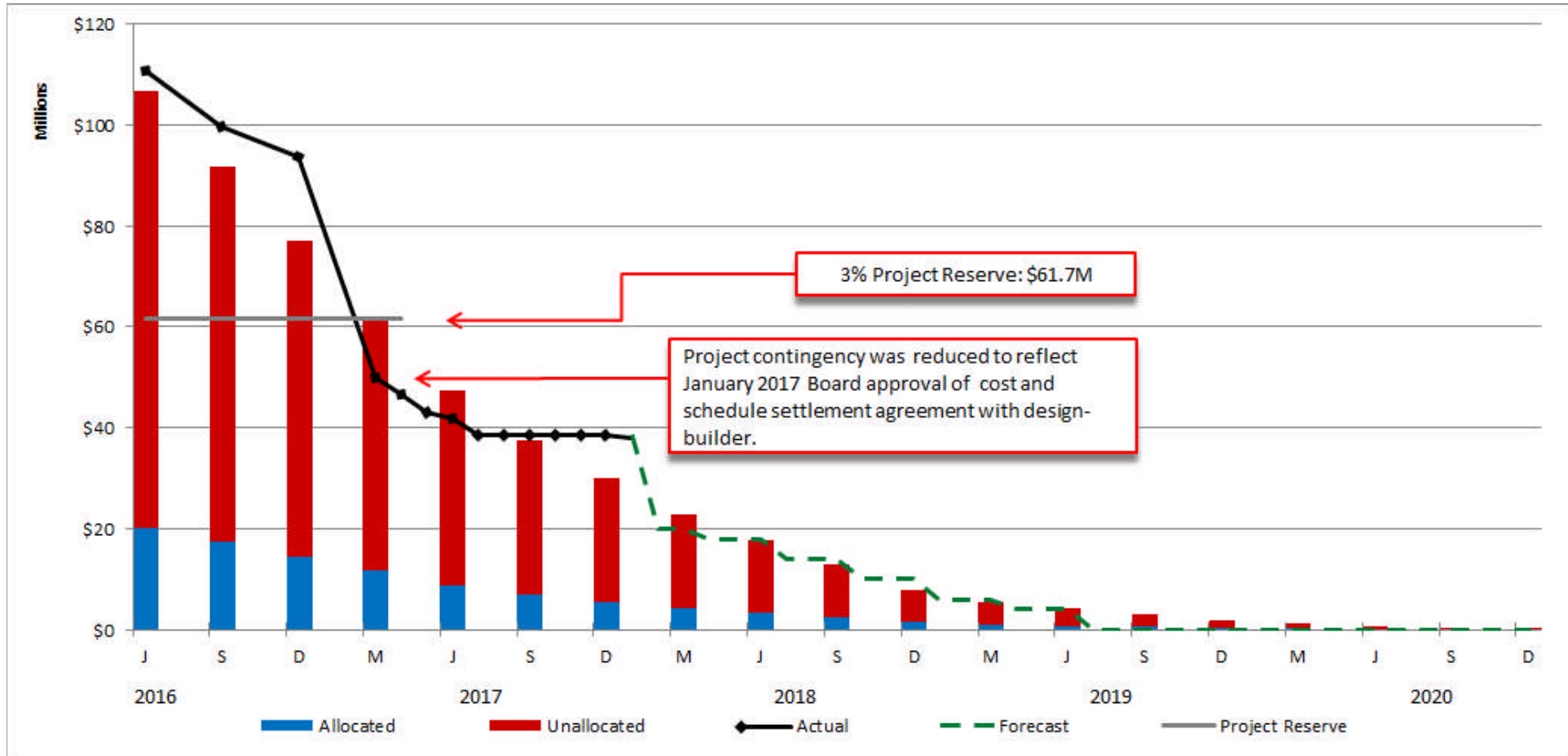
January 2018

Change Notice #	Description	Number of Mod/ Change Orders	Cost Value
TOTAL VALUE OF EXECUTED CONTRACT MODIFICATIONS AND APPROVED CHANGE ORDERS		348	\$ 79,431,526
TOTAL PENDING MODIFICATIONS AND CHANGE ORDERS ROUGH ORDER OF MAGNITUDE COST		25	\$ 5,464,194
DESIGN BUILD - CONTRACT C0988			
MOD 00290	Asbestos Cement Pipe 63rd & Tesoro		Less than \$1 million
MOD 00319	Claim 118 Resolution - Qwest Line		Less than \$1 million
MOD 00320	Clean Agent Systems in the 3 TC& C		Less than \$1 million
MOD 00321	Addl Dsgn MLK Paver Underlayment		Less than \$1 million
MOD 00323	ATC Wayside Signal Numbering Rev		Less than \$1 million
MOD 00332	Revised ROW Lines at HS-1001, Arbor		Less than \$1 million
MOD 00338	MRDC- Full Height End of Platform		Less than \$1 million
MOD 00340	Construction Hindry Widening & Reloc		Less than \$1 million
MOD 00345	Oil Water Separator at UG Stations		Between \$1 and \$5 million
MOD 00348	Dsng Cost to Repl Conc with Steel Po		Less than \$1 million
MOD 00304	BkChrg Metro pymnts to COLA TCO		Credit between \$1 and \$5 million
MOD 00327	Composite Utility Plan Revisions		Less than \$1 million
MOD 00346	Centinela Mill and Overlay-Design		Less than \$1 million
MOD 00347	UG1 Ctr Walkway Lghtd Handrail Design		Credit Less than \$1 million
CO 00046.5	Underground Conduit & Cable		Less than \$1 million
CO 00129	Elimination Crosver Sta 56+57.50		Credit Less than \$1 million
CO 00152.1	Radio System - Additional Tunnel Amp		Less than \$1 million
CO 00153.1	Radio System - Additional Head-End		Less than \$1 million
CO 00154.1	Radio System- UG1 Hot Standby Amplif		Less than \$1 million
CO 00176.1	Underground Station Emergency Vent		Less than \$1 million
CO 00180.1	Cable Transmission System - Construction		Less than \$1 million
CO 00197	MLK Station Plaza Concrete Pav-Construction		Less than \$1 million
CO 00202	Crenshaw Median Landscaping & Maintenance		Between \$1 and \$5 million
CO 00203	Storm Drain Relocation at MLK		Less than \$1 million
CO 00204	Radio Redundancy Radio Rooms		Less than \$1 million
TOTAL MODIFICATIONS AND CHANGE ORDERS		373	\$ 84,895,720
PROFESSIONAL SERVICES CONTRACTS			
Design Support Services During Construction - CONTRACT E0117			
TOTAL VALUE OF EXECUTED CONTRACT MODIFICATIONS		42	\$ 59,217,720
TOTAL PENDING MODIFICATIONS		0	\$ -
TOTAL MODIFICATIONS		42	\$ 59,217,720
Construction Management Support Services - CONTRACT MC069			
TOTAL VALUE OF EXECUTED CONTRACT MODIFICATIONS		18	\$ 69,484,775
TOTAL PENDING MODIFICATIONS		0	\$-
TOTAL MODIFICATIONS		18	\$ 69,484,775

Crenshaw/LAX Transit Project

Project Cost Contingency Drawdown

January 2018



Regional Connector Change Activity

January 2018

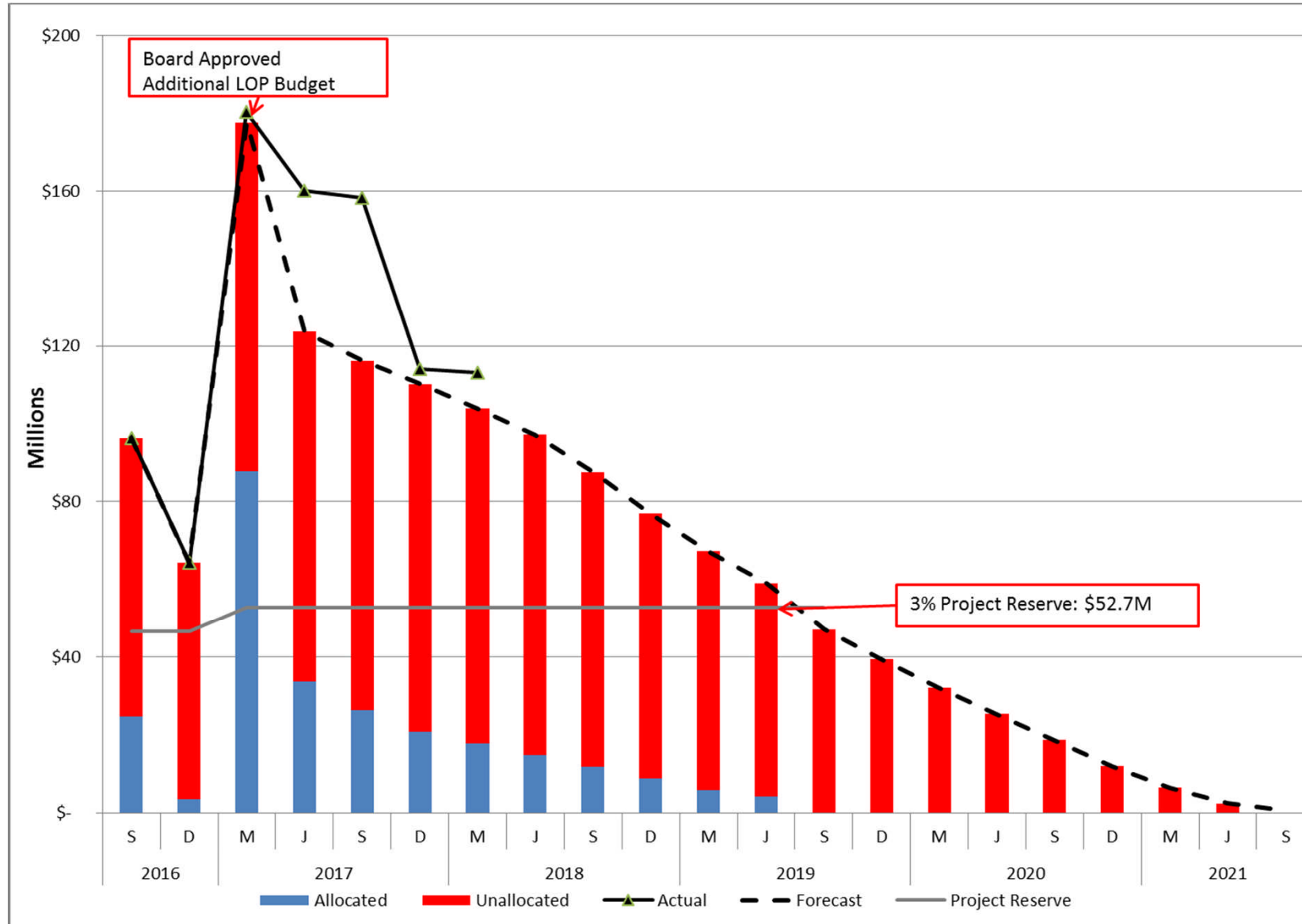


Change Notice #	Description	Number of Mod/ Change Orders	Cost Value
DESIGN BUILD CONTRACT (C0980)			
TOTAL VALUE OF ALL EXECUTED CONTRACT MODIFICATIONS AND CHANGE ORDERS:		108	\$ 195,317,183
TOTAL PENDING MODIFICATIONS AND CHANGE ORDERS ROUGH ORDER OF MAGNITUDE COST:		32	\$ 28,611,806
	1st/Alameda Bumpout (Construction)		Less Than \$1 Million
TBD	Flower Street Modification: future 2-way Traffic /Bumpout/Ped Lighting (Construction Only)		Between \$1 and \$5 Million
TBD	Revise Metro Rail Station Signage and Incorporate Metro Underground Station Signage (Construction)		Less Than \$1 Million
TBD	Add Wye Junction Fan Plant - Construction		Between \$10 and \$15 Million
68.0	Flower Street Zanja Additional Potholing		Less Than \$1 Million
87.0	Support Veolia 24" Chilled Water Pipes at 2nd/Hope Station		Less Than \$1 Million
99.0	Option 3 Pedestrian Bridge Revisions / Broad Coordination (Construction)		Between \$1 and \$5 Million
TBD	Add One Add'l VHF Radio Operational Channel - Construction		Less Than \$1 Million
106.0	Revisions to Metro Optical Network Switch		Less Than \$1 Million
TBD	Revise Communication Radio System SOW (Construction)		Less Than \$1 Million
TBD	Add Perforated Metal Dropped Ceiling at 2nd/Hope Station Plaza - Construction		Less Than \$1 Million
111.0	Spray-on Acoustical Finishes Additional Quantities		Between \$1 and \$5 Million
TBD	Revised Emergency Walkways at Curves (30" to 35") - Construction		Less Than \$1 Million
TBD	Insurance Claim - JVP Compensation Grout Line		Less Than \$1 Million
130.0	10" Sewer Bypass at 1st/Alameda		Less Than \$1 Million
131.0	Backfilling Broken Compensation Grouting Pipes at JVP		Less Than \$1 Million
133.0	Deleting OCS Work at 7th Metro (CREDIT)		Less Than \$1 Million
134.0	2nd/Broadway - LA Times Communication Line Realignment Due to Differing Site Conditions		Less Than \$1 Million
138.0	LADWP Switch Room Requirements for 1st and Central Station - Design Only		Less Than \$1 Million
146.0	Add 'l Gas Monitoring/Potential Gassy w/Special Conditions		Between \$1 and \$5 Million
148.0	Platform Stand-Alone Validators		Less Than \$1 Million
151.0	Differing Site Conditions - Time		Between \$1 and \$5 Million
TBD	Differing Site Conditions - Labor		Between \$1 and \$5 Million
TBD	DWP Vault Support (5) on Flower		Less Than \$1 Million
153.0	Additional UPS System for Regional Connector Radio Racks at 7th Metro -Design Only		Less Than \$1 Million
TBD	Additional UPS System for Regional Connector Radio Racks at 7th Metro -Construction		Less Than \$1 Million
158.0	2nd & Broadway Station Revised Overbuild Design Parameters		Between \$1 and \$5 Million
160.0	Support for Building LADWP Manholes on Flower St.		Less Than \$1 Million
161.0	Flower St. Traffic Control for LADWP Cable Pulling		Less Than \$1 Million
162.0	Extra Civil A & B Work to Resolve Outstanding COLA Comments (Design Only)		Less Than \$1 Million
165.0	Add'l Street Pavement Resurfacing Along 1st St. Spring St., and S. Broadway		Less Than \$1 Million
TBD	Cancelled CO#17 Three Shift TBM Mining Operation		Less Than \$1 Million
TOTAL MODIFICATIONS AND CHANGE ORDERS		140	\$ 223,928,989
PROFESSIONAL SERVICES CONTRACT			
Design Support Services During Construction (E0119)			
TOTAL VALUE OF EXECUTED CONTRACT MODIFICATIONS		12	\$ 44,629,810
TOTAL PENDING MODIFICATIONS ROUGH ORDER OF MAGNITUDE COST		1	\$ 4,446,988
29.1	FY2019 Funding for Design Support During Construction		Between \$1 and \$5 Million
TOTAL MODIFICATIONS		13	\$ 49,076,798
Construction Management Support Services (MC070)			
TOTAL VALUE OF EXECUTED CONTRACT MODIFICATIONS		5	\$ 35,630,672
TOTAL PENDING MODIFICATIONS ROUGH ORDER OF MAGNITUDE COST		1	\$ 10,652,889
15.0	Additional Funding for Construction Management Support Services Through FY 19		Between \$10 and \$15 Million
TOTAL MODIFICATIONS		6	\$ 46,283,561

Regional Connector

January 2018

Project Cost Contingency Drawdown



Westside Purple Line Extension – Section 1 Change Activity

January 2018

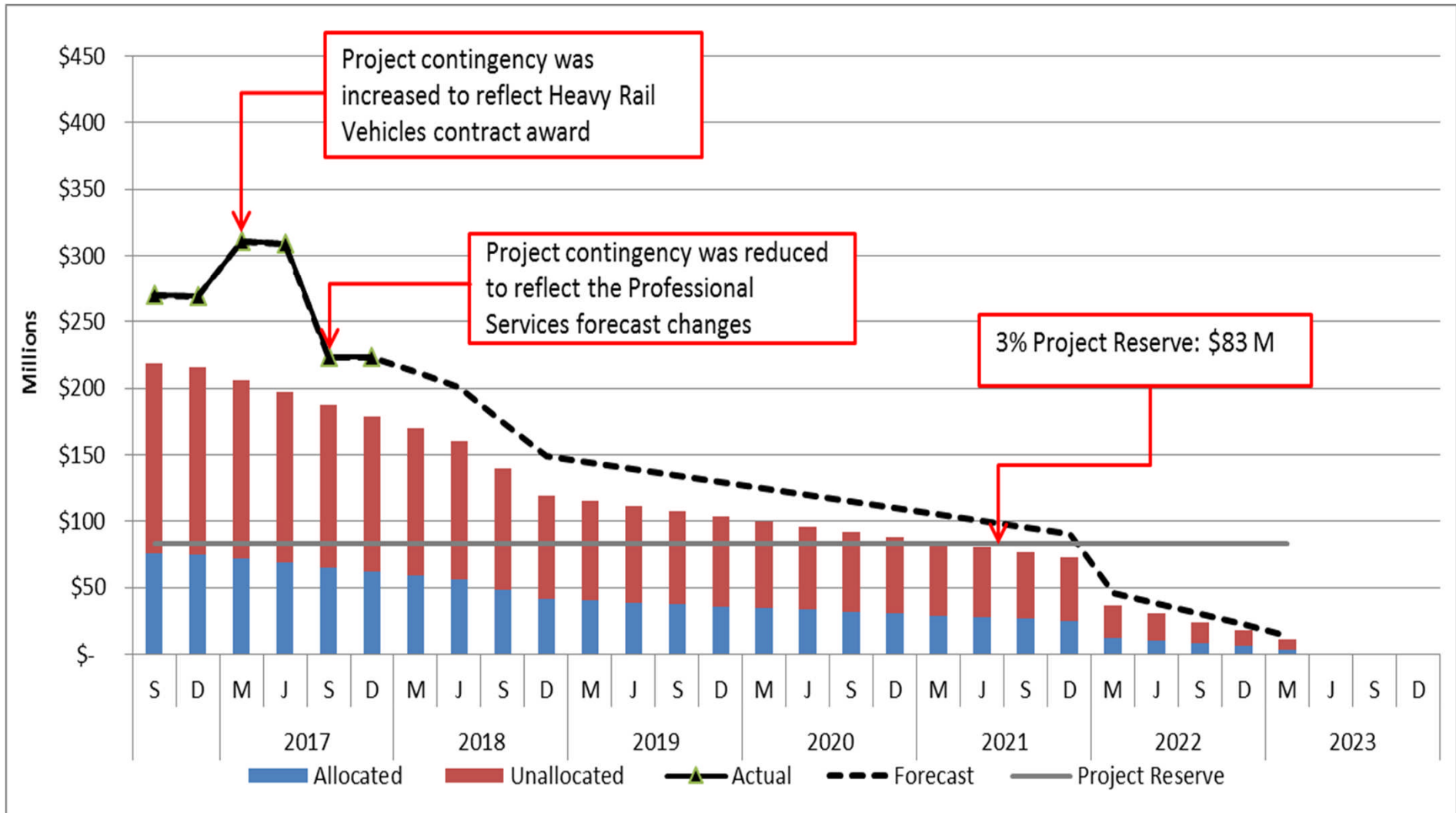


Change Notice #	Description	Number of Mod/Change Orders	Cost Value
TOTAL VALUE OF ALL EXECUTED CONTRACT MODIFICATIONS AND CHANGE ORDERS:		150	\$ 30,042,654
TOTAL PENDING MODIFICATIONS AND CHANGE ORDERS ROUGH ORDER OF MAGNITUDE COST:		47	More than \$15M
DESIGN/BUILD CONTRACT C1045			
CN-26	Betterment City of Beverly Hills - Median Reconstruction at San Vicente Blvd		Less Than \$1 Million
CN-32	Pin Station (Identifier) Changes		Less Than \$1 Million
CN-42.3	Radio Subsystem Redundancy		Between \$1M - \$5M
CN-43.4	Isolate Track Circuits at Wilshire/Western		Less Than \$1 Million
CN-47.2	Stainless Steel Enclosure for TVM and PTEL		Less Than \$1 Million
CN-56	Implement City of Beverly Hills Memorandum of Agreement (MOA)		Between \$10M - \$15M
CN-63	La Brea- Additional Instrumentation Requested by BOE		Less Than \$1 Million
CN-64.1	Additional SOE Design Work - La Brea Station		Less Than \$1 Million
CN-65.1	Additional SOE Design Work for Fairfax Station Due to Deviation Request for Building Settlement		Less Than \$1 Million
CN-66	Additional Dewatering Treatment & Discharge Costs at La Brea		Less Than \$1 Million
CN-67	Tactile Guidance (Construction and Plaza Material Change)		Less Than \$1 Million
CN-68	Increased Ventilation of Station Ancillary Rooms		Between \$1M - \$5M
CN-72.1	Stations - Art Related Changes		Less Than \$1 Million
CN-76	Additional SOE Design Work for La Cienega Station Due to Deviation Request for Building Settlement		Less Than \$1 Million
CN-77	Additional Interpretation for Building Settlement		Less Than \$1 Million
CN-78	Fairfax - DWP Ductbank Conflict with Deck Beams		Less Than \$1 Million
CN-79	Wilshire/Western - Permit Approval and Inspection for Access Shaft		Less Than \$1 Million
CN-80.1	Stand by Generator Enclosure Aesthetic Improvements at La Cienega		Less Than \$1 Million
CN-81	Additional Instrumentation (Project Wide) as Required by LABOE and STS EOR		Less Than \$1 Million
CN-82	Additional Geotechnical Instrumentation at Western		Less Than \$1 Million
CN-83	Additional Dewatering Treatment & Discharge Impacts at Western		Between \$1M - \$5M
CN-84	Additional SOE Design Work for the Western Shaft Due to Deviation Request for Building Settlement		Less Than \$1 Million
CN-85	La Brea Utility hanging Changes for Sewer and Storm Drains		Less Than \$1 Million
CN-87	Power Duct Bank Conflict at La Brea (ECI-4)		Less Than \$1 Million
CN-88	TCE Slab Demolition and Removal at the Western Shaft		Less Than \$1 Million
CN-89	La Cienega-Removal of AT&T Abandoned Cables		Less Than \$1 Million
CN-91	La Brea-DWP Conflict and Impacts to Cap Beam Walkers 28 & 29		Less Than \$1 Million
CN-92	La Cienega - Impacts from Delayed SCE Lines/MH Abandonment		Less Than \$1 Million
CN-93	Center Muck Shaft at La Brea (ECI-4)		Less Than \$1 Million
CN-94.1	Negative Rail-to-Ground Voltage Device at Fairfax Station		Less Than \$1 Million
CN-96	La Cienega - TPSS Room Changes for SCE (Design and Construction)		Less Than \$1 Million
CN-98	Implement Wireless - Stations and Tunnels		Less Than \$1 Million
CN-99	Oil Well Horizontal Investigation in Lieu of TBM Probe-Ahead		Between \$1M - \$5M
TBD	Fairfax - Piling Obstructions, Conflicts, Delays		Less Than \$1 Million
TBD	La Cienega Tail Track FLS Issues		Less Than \$1 Million
TBD	La Cienega - Additional Settlement markers at Saban Corners		Less Than \$1 Million
TBD	Crossover Exit Doors at Stations (La Brea, La Cienega)		Less Than \$1 Million
DESIGN/BUILD CONTRACT C1078		10	
CN-11	Schedule Impacts Due to Third Party		Between \$1M - \$5M
CN-12	Betterment - Motorized Sliding Gate for the City of LA		Less Than \$1 Million
CN-13	AST Leak Detection and Remote Lubrication Fill/Extract Station		Less Than \$1 Million
CN-16	Additional Street/Pedestrian Lights, Trees and Irrigation		Between \$1M - \$5M
CN-18	Storm Drain - Differing Site Conditions		Less Than \$1 Million
TBD	Support of Building Art Work		Less Than \$1 Million
TBD	On-Site LIDS		Less Than \$1 Million
TBD	Hazardous Materials - Chalmers Pan Handle		Less Than \$1 Million
TBD	Betterment: 6th Street Viaduct - Site Re-Grading, Ornamental Fenc, Etc.		Less Than \$1 Million
TBD	Updated IT Standards on Data Drops and Outlets		Less Than \$1 Million
TBD TOTAL MODIFICATIONS AND CHANGE ORDERS		197	
PROFESSIONAL SERVICES CONTRACTS			
Design Support Services During Construction - CONTRACT PS43502000			
TOTAL VALUE OF ALL EXECUTED CONTRACT MODIFICATIONS:		22	\$ 92,608,453
TOTAL PENDING MODIFICATIONS		0	
TOTAL MODIFICATIONS AND CHANGE ORDERS		22	
Construction Management Support Services - CONTRACT MC071			
TOTAL VALUE OF ALL EXECUTED CONTRACT MODIFICATIONS:		4	\$ 70,297,456
TOTAL PENDING MODIFICATIONS		0	
TOTAL MODIFICATIONS AND CHANGE ORDERS		4	

Westside Purple Line Extension – Section 1

Project Cost Contingency Drawdown

January 2018



Westside Purple Line Extension – Section 2 Change Activity

January 2018



January 2018
Westside Purple Line Extension Section 2 Project Change Activity

Change Notice #	Description	Number of Mod/Change Orders	Cost Value
TOTAL VALUE OF EXECUTED CONTRACT MODIFICATIONS AND APPROVED CHANGE ORDERS		10	\$ (18,634,168)
TOTAL PENDING MODIFICATIONS AND CHANGE ORDERS ROUGH ORDER OF MAGNITUDE COST:		10	More than \$15 Million
DESIGN/BUILD CONTRACT C1120			
CN-1.X	Century City Constellation Station West Ancillary & OPE Reconfiguration (Construction)		Less Than \$1 Million
CN-3.X	Century City Constellation Station: Main Entrance (Construction)		More than \$15 Million
CN-6.X	Third Party Relocation Furnish-DWP-Power Vault Cradles, Design & Fabricate AT&T Vault Cradle (partial)		Less Than \$1 Million
CN-7	Deletion of Cross Passage Geotechnical Borings		Less Than \$1 Million
CN-9	Century City Constellation Station Trackwork Extension		Less Than \$1 Million
CN-10	Worksite Traffic Control for SCG & AT&T Advanced Utility Relocation		Between \$1M - \$5M
CN-12	Geotechnical Investigation to Deepen Two Cross Passage Borings		Less Than \$1 Million
CN-13	Santa Monica Blvd. Bus Layover (Add Bus U-Turn Signal)		Less Than \$1 Million
CN-14	Field Office Tenant Improvements at AAA Building (1950 Century Park East)		Between \$1M - \$5M
TBD	AT&T Building Demolition		Between \$1M - \$5M
TOTAL MODIFICATIONS AND CHANGE ORDERS		20	\$ -

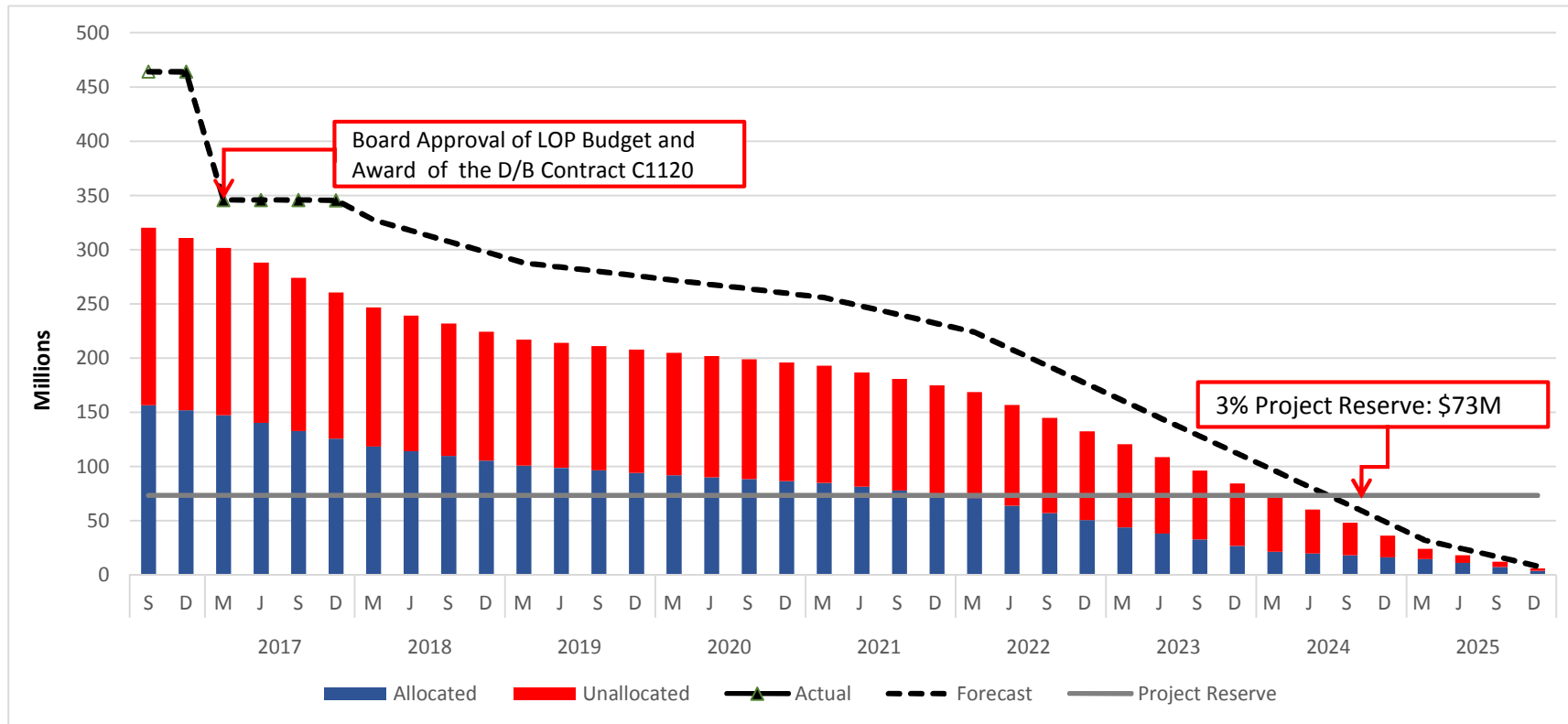
PROFESSIONAL SERVICES CONTRACT			
Design Support Services During Construction			
TOTAL VALUE OF EXECUTED CONTRACT MODIFICATIONS		0	\$ -
TOTAL PENDING MODIFICATIONS		0	\$ -
TOTAL MODIFICATIONS		0	\$ -
Construction Management Support Services			
TOTAL VALUE OF EXECUTED CONTRACT MODIFICATIONS		0	\$ -
TOTAL PENDING MODIFICATIONS		0	\$ -
TOTAL MODIFICATIONS		0	\$ -

OTHER - THIRD PARTY AGREEMENTS			

Westside Purple Line Extension – Section 2

Project Cost Contingency Drawdown

January 2018



As of December 2017.