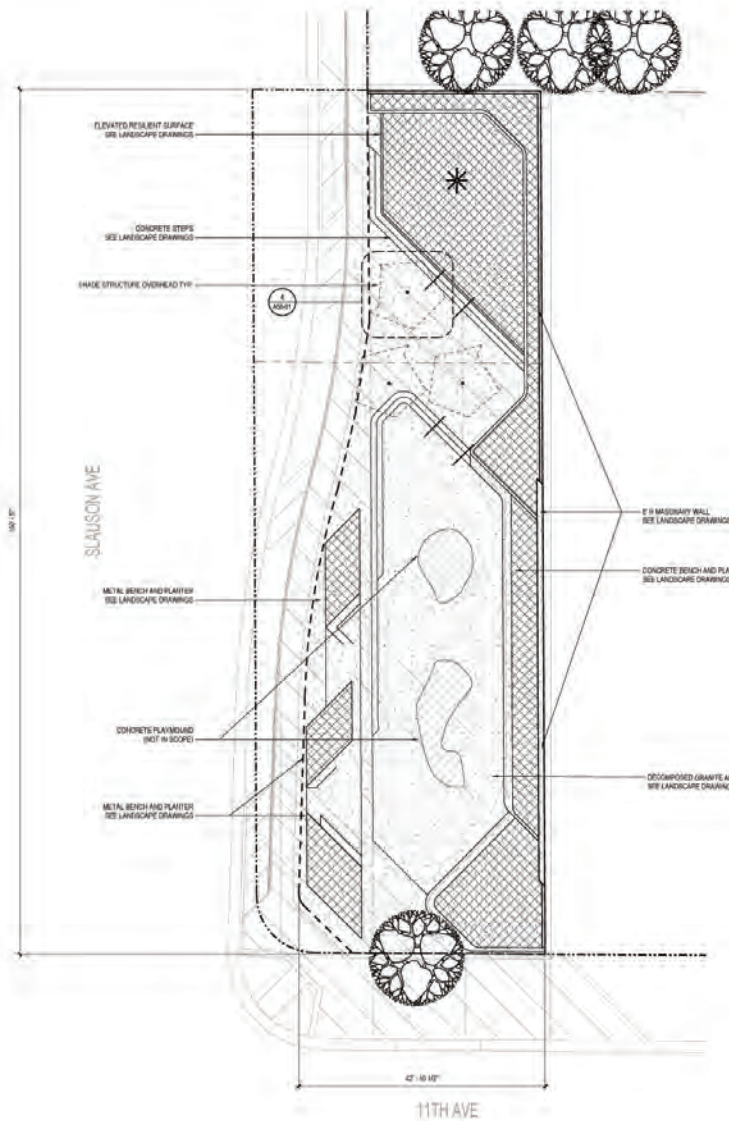


# ATTACHMENT C: I AM PARK



# ATTACHMENT C: I AM PARK



**SHEET NOTES**

- REFER TO CIVIL DRAWINGS FOR CIVIL IMPROVEMENTS
- REFER TO LANDSCAPE DRAWINGS FOR LANDSCAPE IMPROVEMENTS
- REFER TO STRIPING DRAWINGS FOR PARKING LOT IMPROVEMENTS

**OVERALL PLAN LEGEND**

- LIMIT OF WORK
- - - - - PROPERTY LINE
- NOT IN ARCHITECTURAL SCOPE, SEE LANDSCAPE DRAWINGS
- LANDSCAPED AREA SEE LANDSCAPE DRAWINGS
- NOT IN SCOPE
- PROPOSED PUBLIC ART LOCATION
- SPOT ELEVATIONS RELATIVE TO MERTY AND/OR ADJACENT GROUND FINISH GRADE

**PERKINS + WILL**

417 West 7th St., Suite 1200  
Los Angeles, CA 90017  
323.201.8400  
323.201.8430  
www.perkinswill.com

**OWNER**  
DESTINATION CRENSHAW  
200 N. Spring St., Floor 800  
Los Angeles, CA 90012

**LANDSCAPE ARCHITECTS**  
STUDIO 4.4  
291 South Main Street  
Los Angeles, CA 90023

**ARCHITECTS (ARCHITECT)**  
RAW INTERNATIONAL  
800 South Figueroa St., Suite 600  
Los Angeles, CA 90017

**STRUCTURAL, CIVIL, MECHANICAL**  
KJFFE  
700 South Flower St., Suite 2100  
Los Angeles, CA 90017

**MEP ENGINEERS**  
SYSKA HENNESSY GROUP  
800 Corporate Plaza, Suite 200  
Culver City, CA 90230

**LANDSCAPE DESIGNER**  
FRANCIS KIRK & ASSOCIATES  
304 S. Broadway, Suite 500  
Los Angeles, CA 90013

LA DBS SUBMITTAL 02/08/19  
NOT FOR CONSTRUCTION

REGISTERED ARCHITECT  
STATE OF CALIFORNIA  
No. 108 (LAW)

**PROJECT**  
DESTINATION  
CRENSHAW  
POCKET PARK  
SLAUSON EAST  
570 S. 11TH AVE  
LOS ANGELES, CA

**ISSUE CHART**

DATE	BY	FOR
11/02/2019	SP	11/02/2019
11/02/2019	SP	11/02/2019
11/02/2019	SP	11/02/2019
11/02/2019	SP	11/02/2019

**OVERALL PLAN**

SHEET NUMBER  
**2A10-01**

① OVERALL PLAN  
T = 10'-0"

# ATTACHMENT C: I AM PARK

