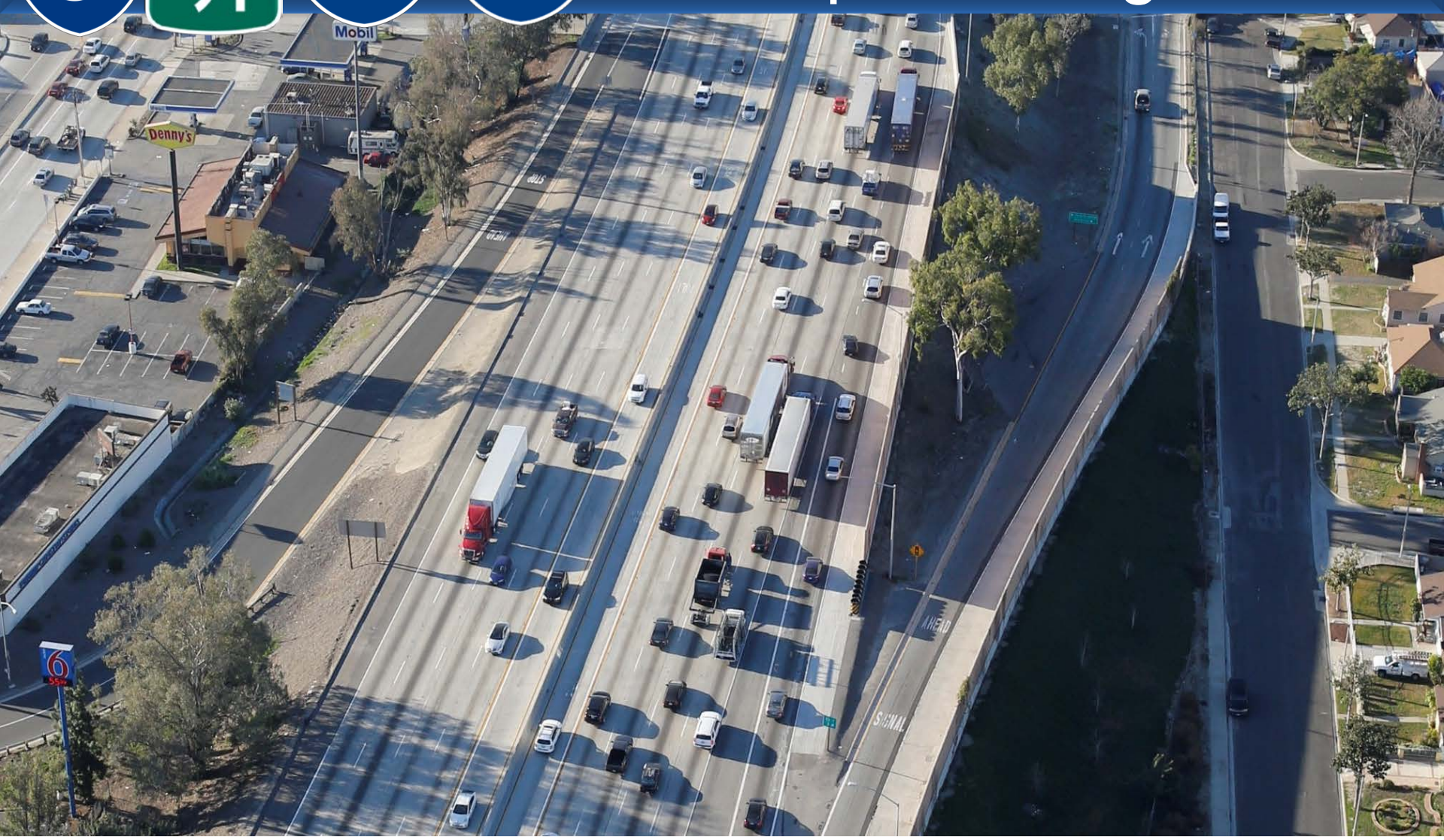


“Hot Spots” Program





“Hot Spots” Program

Program Summary

- 2012 Feasibility Study
- Identified congestion “hot spots” along I-5, SR-91, I-405, and I-605
- Freeway widening/additional lanes, ramp reconfigurations, arterial intersection enhancements, signage, and safety features
- Planning studies and environmental documents are in progress for various projects
- Estimated total cost of projects in the corridor: \$5+ billion
- Measure R Funding: \$590 Million
- Measure M Funding: \$ 1 Billion





"Hot Spots" Program

I-605/Valley Blvd.

SR-60/7th Ave.

I-605/Beverly Blvd.

SR-91/I-605

SR-91/Central Ave.

SR-91/Wilmington

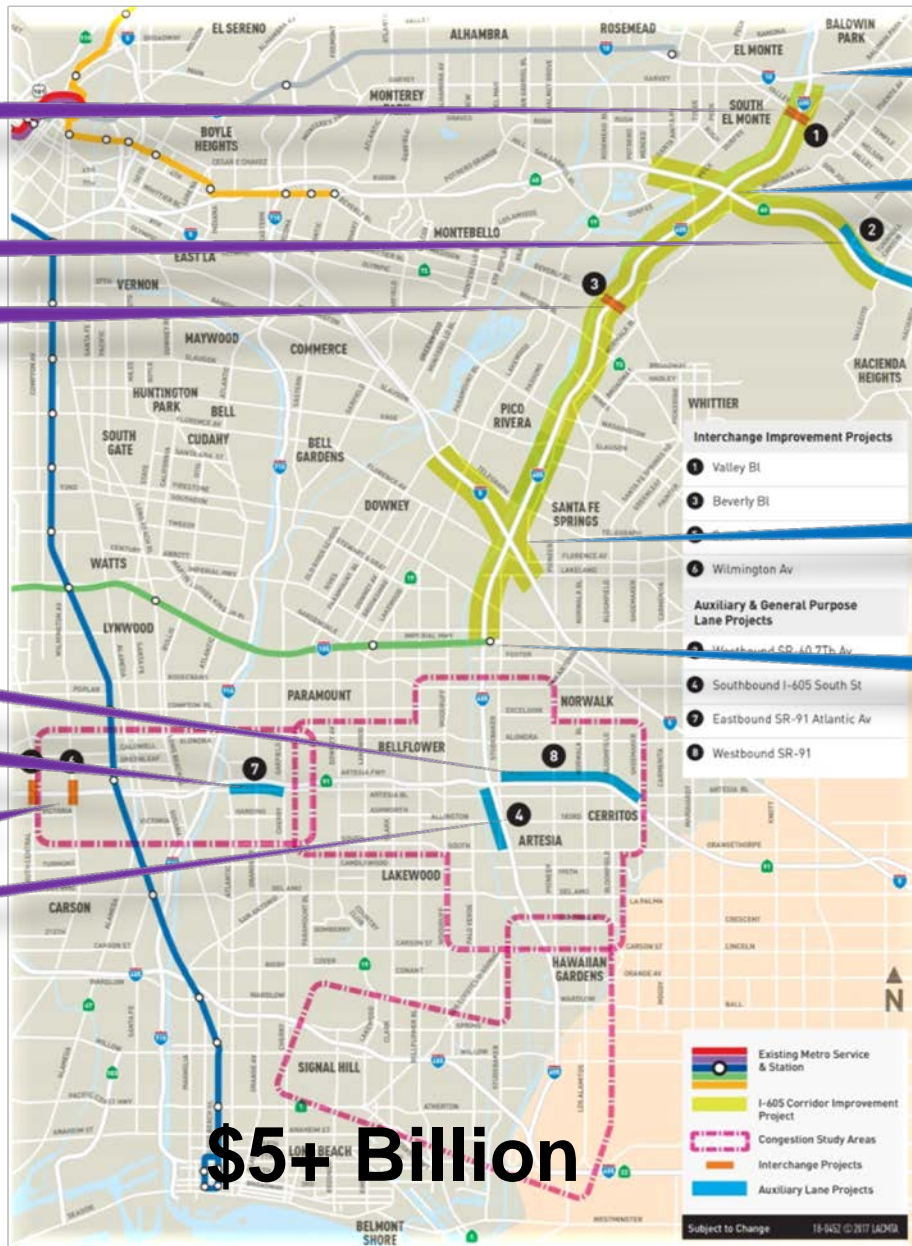
I-605/South St.

I-605/I-10

I-605/SR-60

I-605/I-5

I-605/I-105



+ Over 30 Arterial Intersection Improvements

\$5+ Billion





“Hot Spots” Program

Early Action Projects

Freeways

- Seven Projects ranging from \$12-\$80 million
- Interchange improvements and auxiliary lanes
- Simple environmental clearance (e.g. CE)
- Timeline: 3-5 years

Arterials

- \$136 Million allocated in Measure R– more funds in Measure M
- \$84.5 Million programmed to date (30+ projects)
- Metro or local agencies will advance the projects
- All local project construction by local agencies



Valley Blvd.



New Intersection

Reconfigure Valley Blvd.

Widen Temple St./Rt. Turn Lane

New On-Ramp

2018: PAED/PS&E
2020: Construction

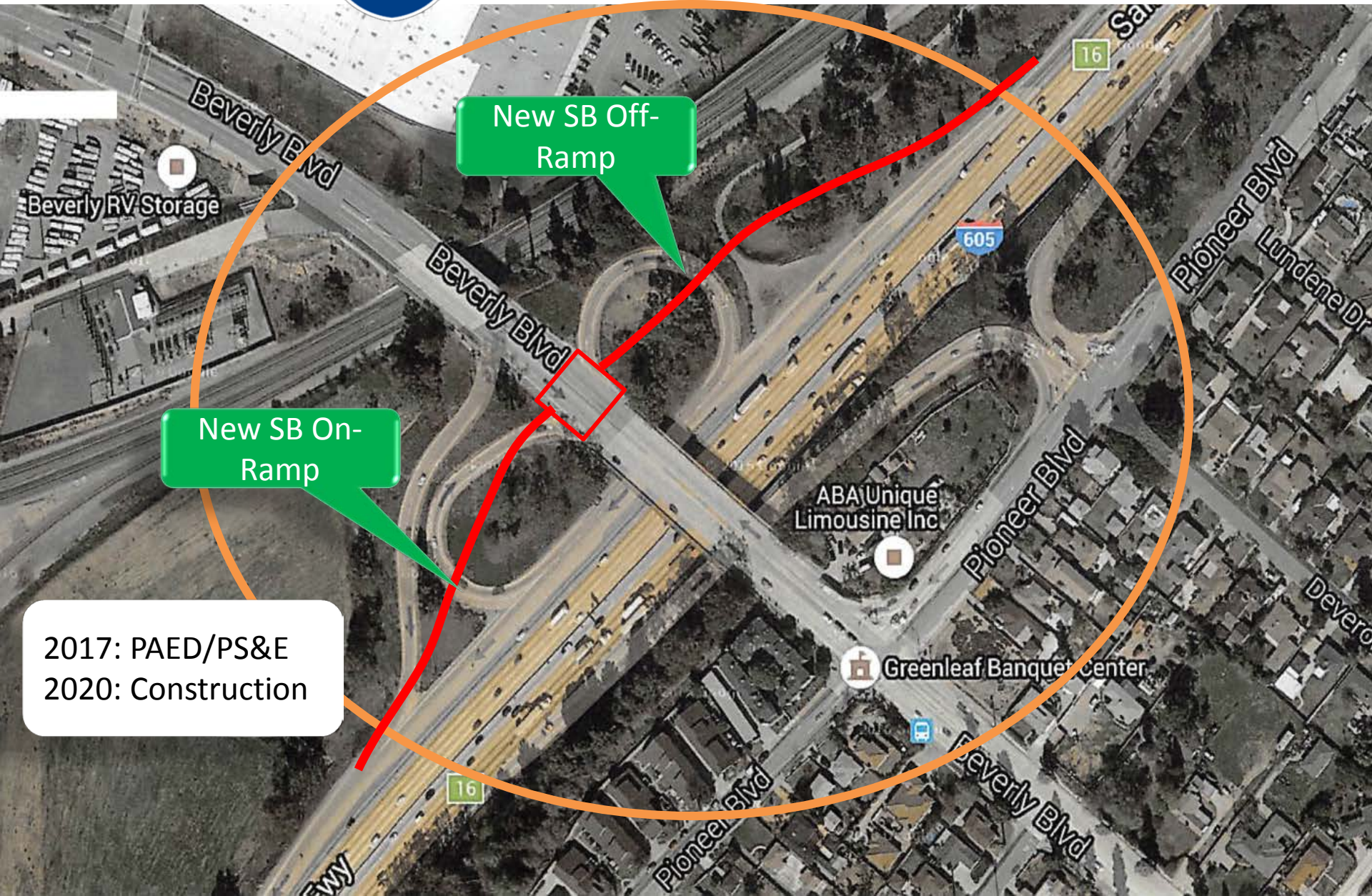
Valley Inn

Frimand's Public School

El Taco-Nazo
Counter-serve,
Baja-style Mexican food



Beverly Blvd.



New SB Off-Ramp

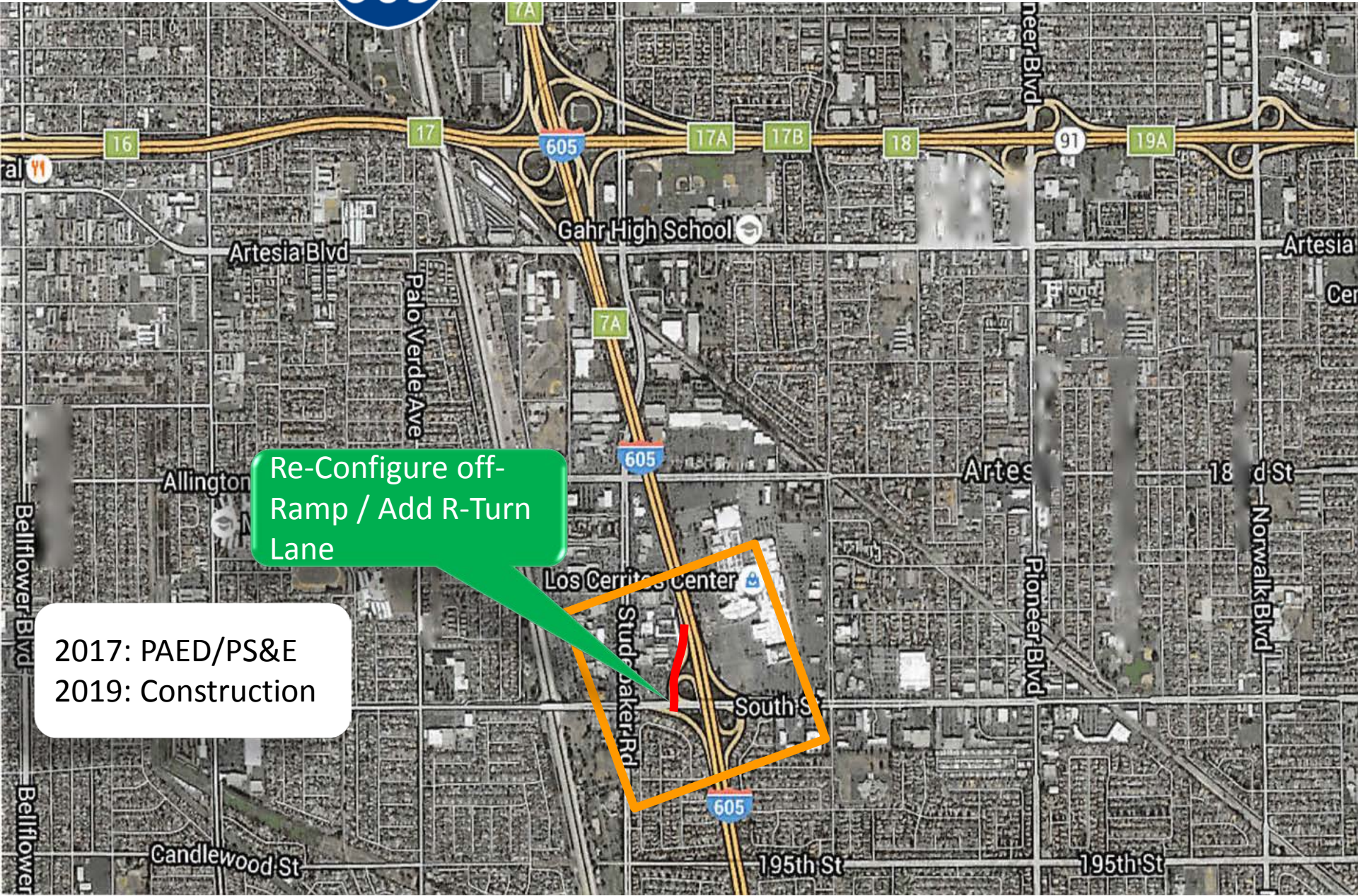
New SB On-Ramp

2017: PAED/PS&E
2020: Construction





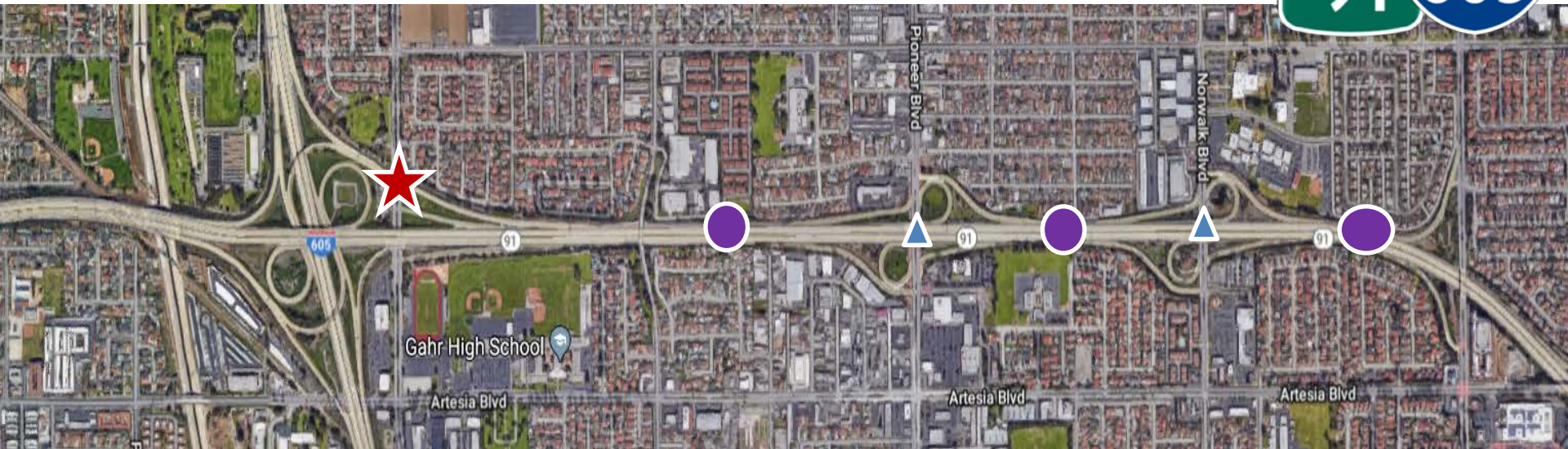
South Street



Re-Configure off-Ramp / Add R-Turn Lane

2017: PAED/PS&E
2019: Construction

WB SR-91 Improv. Project



- ★ Heavily congested Connector
 - 2 lane connector from westbound SR-91 splits to 1 lane southbound I-605 and 1 lane northbound I-605
- Short weave (merge) distance between each on- and off-ramp
- ▲ Deficient ramp configuration

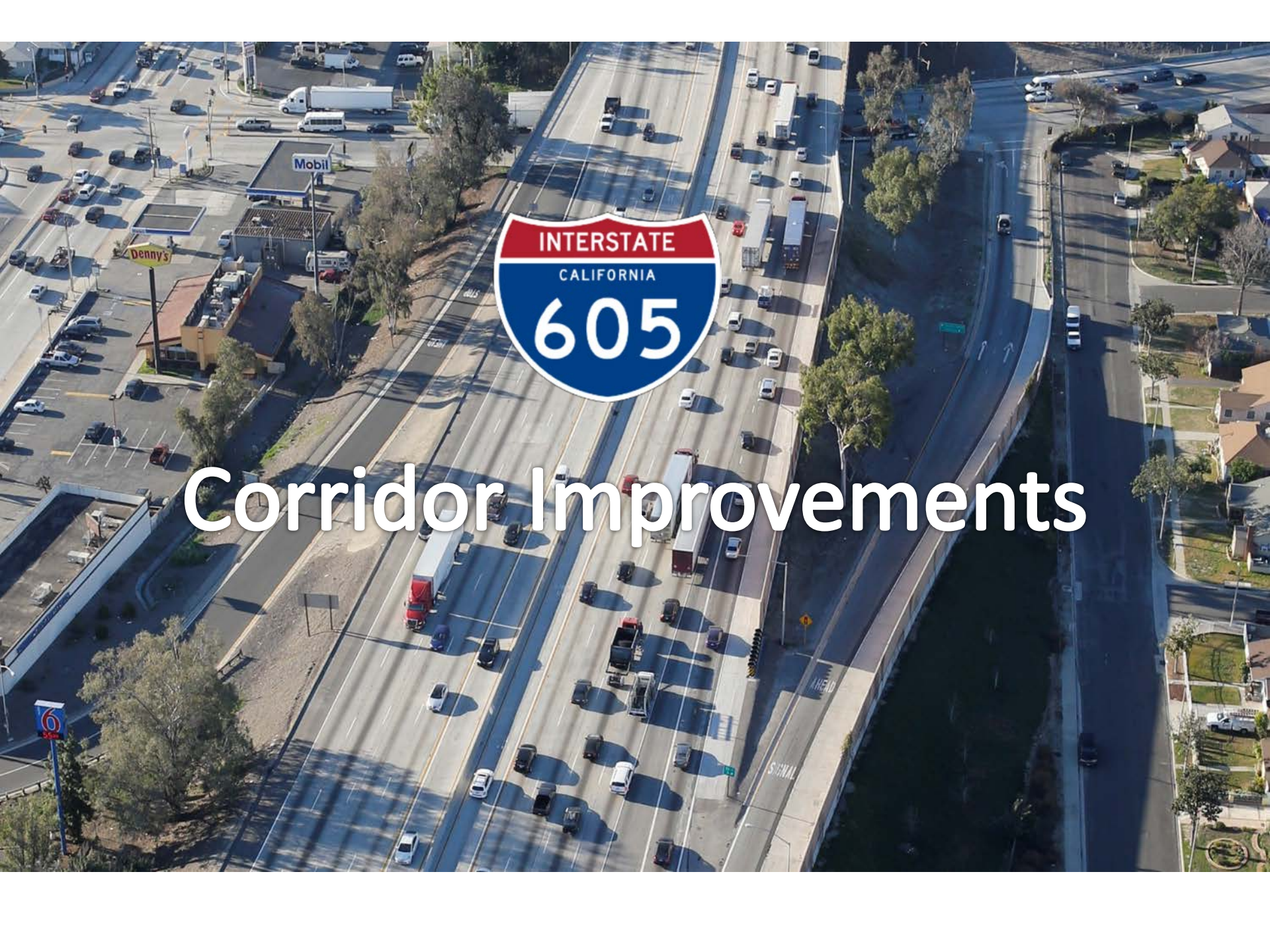
WB SR-91 Improvements Project



- Approximately 3 miles long
- Widen freeway and connector
- Improvements on Pioneer Blvd., Norwalk Blvd., Bloomfield Ave., and Artesia Blvd.



Corridor Improvements



I-605 Corridor Improvements



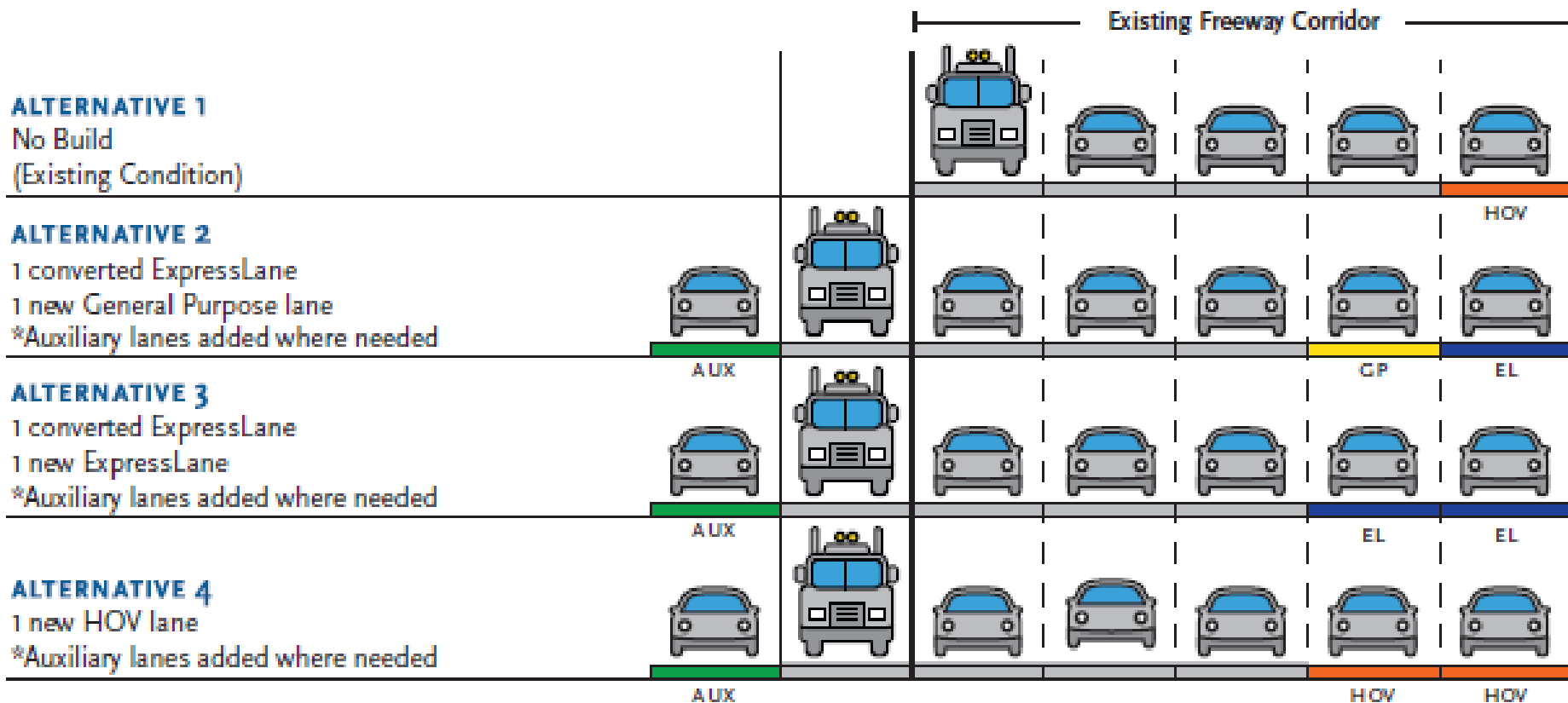
Project Goals

- Ease congestion and improve overall throughput
- Improve freeway/interchange operations, connectivity, mobility, and travel times
- Enhance safety

Timeline

- Fall 2015: I-605 Corridor EIR/EIR started
- December 2016: Scoping comments by the Environmental Protection Agency (EPA) requested consideration of ExpressLanes
- January 2017: Metro Board of Directors approved the Countywide ExpressLanes Strategic Plan
- October 2017: Inclusion of ExpressLanes in the I-605 EIR/EIS Build Alternatives

I-605 Corridor Improvements



I-605 Corridor Improvements



I-605 Improvements:

- Add one NB and one SB lane (GP, HOV, or ExpressLane)
- Add auxiliary lanes between on- and off-ramps
- Improvements to interchanges

SR-60 Improvements:

- Westbound:
 - Add one GP lane from I-605/SR-60 Interchange to Hacienda Blvd.
 - Add auxiliary lanes ahead of the I-605/SR-60 interchange
- Eastbound:
 - Add one GP lane from I-605/SR-60 Interchange to 7th Ave.

I-5 Improvements:

- NB and SB: Add new HOV lanes from Florence Av to Rio Hondo Channel
- Add auxiliary lanes as needed between on- and off-ramps
- Improvements to interchanges

HOV/EL Direct Connectors Being Considered

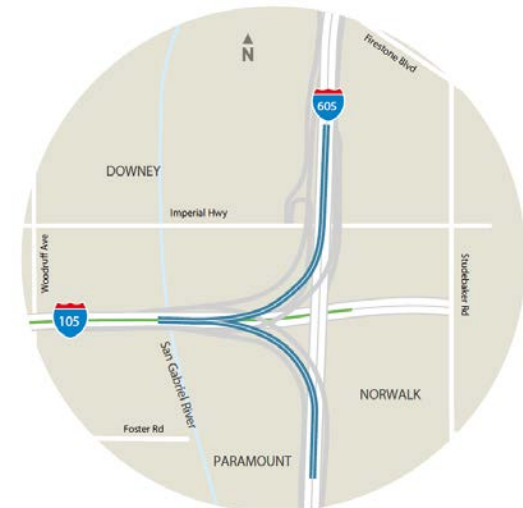
I-605/I-10 Direct Connectors:

- Add HOV or ExpressLane direct connector from north I-605 to west I-10 with reverse movement



I-605/I-105 Direct Connectors:

- Add HOV or ExpressLane direct connectors from north I-605 to west I-105 with reverse movement
- Add HOV or ExpressLane direct connector from south I-605 to west I-105 with reverse movement



I-605 Corridor Improvements



Key Milestones: Environmental Process

PUBLIC
SCOPING
PERIOD
COMPLETED
FALL 2016

ENVIRONMENTAL
ANALYSIS
& TECHNICAL
STUDIES
2017-2019

RELEASE OF
DRAFT EIR/EIS &
PUBLIC HEARING
FALL 2019

RESPOND TO
COMMENTS &
SELECT PREFERRED
ALTERNATIVE
SPRING 2020

FINAL
EIR/EIS & RECORD
OF DECISION
SPRING 2021

We
Are
Here

Outreach

- October and November 2016:
 - 6 public Scoping Meetings
 - 2 Agency Scoping Meetings
- Project briefings:
 - Corridor Cities
 - State and Federal elected officials in the Gateway Cities region
 - Agencies
- Community Update Meetings on February 6-8 in Pico Rivera, Norwalk, and Whittier



Gateway Cities Highway Program Manager

Ernesto Chaves

Sr. Director

213.418.3142

chavese@metro.net

I-605 Capital Improvements

Isidro Pánuco

Project Manager

213.922.4091

i605corridor@metro.net

metro.net/605hotspots

SR 91 & Arterial Programs

Carlos Montez

Project Manager

213.922.4782

wbsr91@metro.net

metro.net/605hotspots

Thank You!

