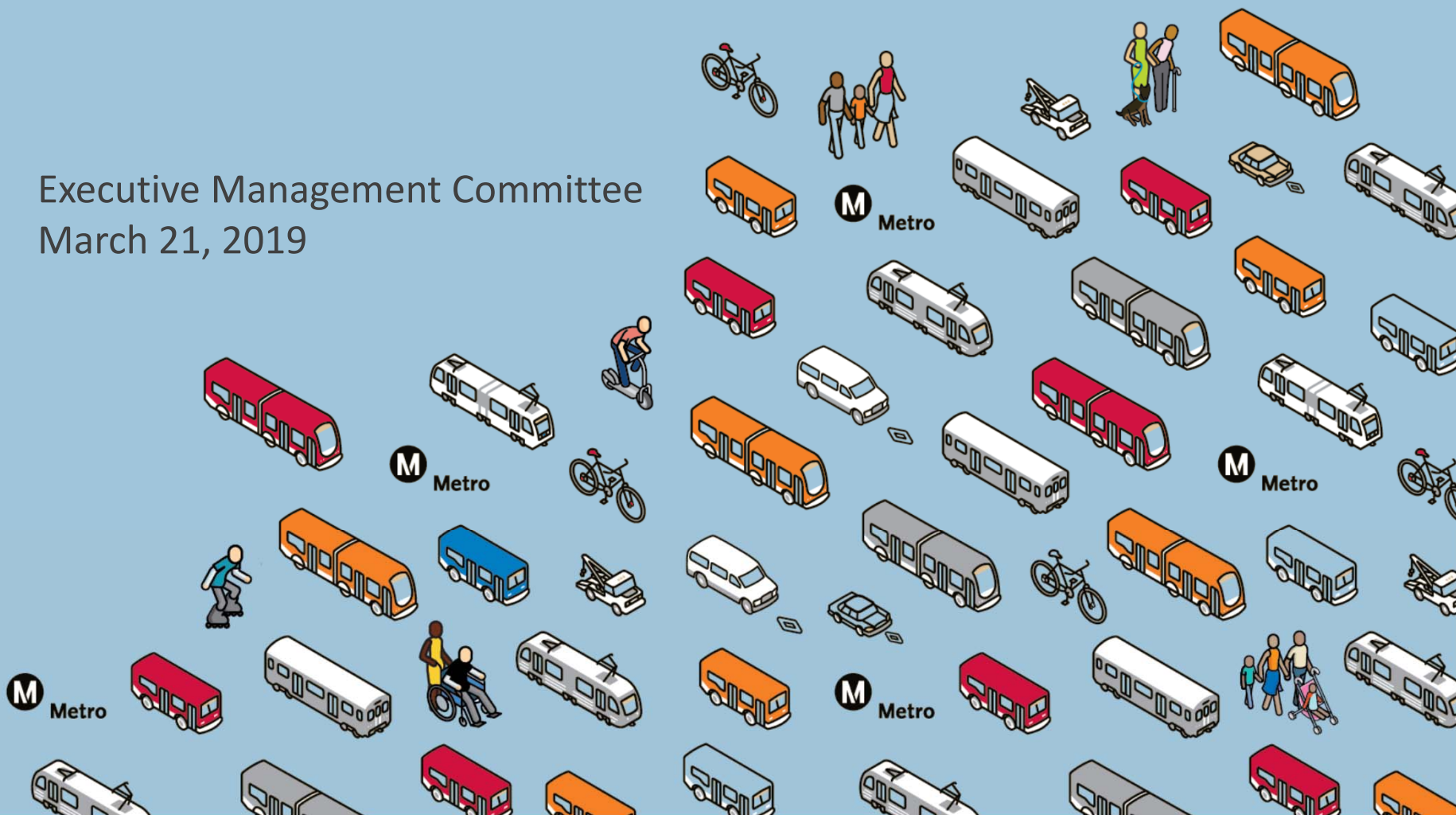


# Bus Only Infrastructure

Executive Management Committee  
March 21, 2019



# Measure M BRT Projects

## Vermont BRT Transit Corridor

Measure M and Twenty-Eight by '28 project

- Groundbreaking FY24 to FY26
- Anticipated BRT opening FY28 to FY30
- \$425 million in Measure M funds

March 2019 – Seeking Board approval to start EIR

- End-to-end side-running
- Combination side and center-running



## North Hollywood to Pasadena

Measure M and Twenty-Eight by '28 project

- Groundbreaking FY20 to FY22
- Anticipated opening date FY22 to FY24
- \$267 million in Measure M & SB1 Funds

April 2019- Seek Board Approval to start EIR



# Measure M BRT Projects

## North San Fernando

Measure M and Twenty-Eight by '28 project

- Groundbreaking FY19 to FY21
- Anticipated opening date FY23 to FY25
- \$180 million in Measure M Funds

May 2019- Seeking Board Approval to Start EIR



## Lincoln Boulevard

Measure M

- Groundbreaking FY43 to FY45
- Anticipated BRT opening FY47 to FY49
- \$102 million in Measure M funds
- Voter Approved, Future Study Initiation



# BRT Vision & Principles Study

---



## Study Overview

Develop/Define:

- BRT vision, goals and objectives
- BRT standards
- Corridor evaluation criteria
- Design criteria for BRT

Identify and prioritize BRT corridors



## Status

- December 2018 – Awarded contract
- January/February 2019 – Coordinated outreach with NextGen Bus Study

## Next Steps

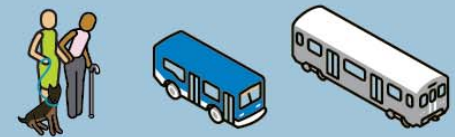
- April 2020 – Complete study
- Spring 2020 – Initiate procurement for advancing promising BRT corridor\*  
\*(Twenty-Eight by '28 Project)



# Status of New Blue Flower Street Temporary Bus Lanes

---

- Metro is working with LADOT to establish a temporary bus lane on Flower St between 7th St and Adams
- Improvement could save between 7 and 9 minutes per trip on New Blue shuttle bus service
- Signage and striping plans have been submitted to LADOT for final review
- Stakeholder outreach is underway including meetings with CD 9, 14 and the Office of Mayor Garcetti
- Overall support for this initiative so far, and a factsheet and map are being prepared for further stakeholder outreach





# Pilot Bus Lane

---

- Metro, LADOT and the Office of Mayor Garcetti have initiated a project to implement a pilot bus lane by the end of CY19
- Initial screening criteria have been established, including:
  - Severity of delay
  - Transit ridership along the corridor
  - # buses/hour
  - Constructability
  - Cost vs Customer benefits and Operational savings
  - Proximity of alternative parking if needed



# Thank you

---

