

Los Angeles County
Metropolitan Transportation Authority

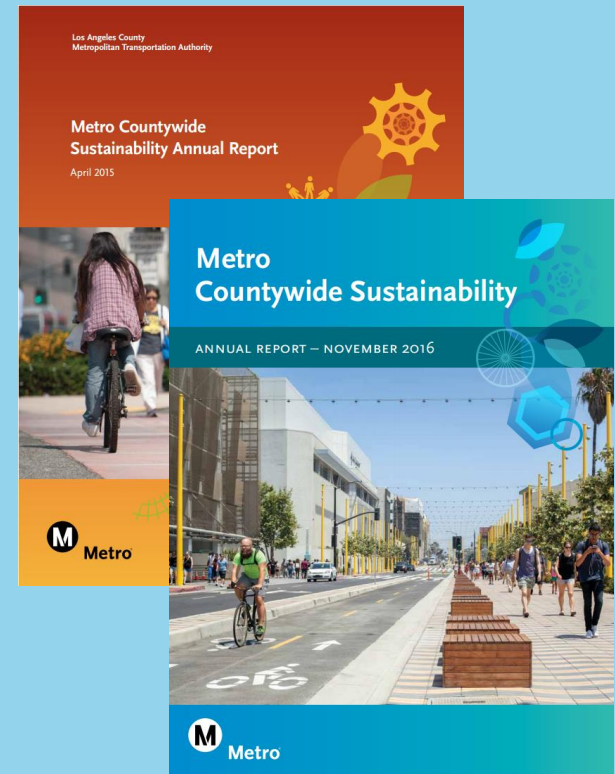
Status Update: 2017 Sustainability Annual Report and Performance Metrics

Ad Hoc Sustainability Committee
February 15, 2017



Background and Context

- Metro released two Sustainability Annual Reports so far:
 - 2015
 - 2016
- After release of 2015 report, Committee directed staff to expand sustainability performance metrics, notably to include those related to equity.



2017 Annual Sustainability Report – Status



- 2017 Sustainability Annual Report to include:
 - Sustainability Case Studies
 - Data collection and Analysis for existing and new performance metrics
- Consultant has been selected; Contract award is anticipated in February
- Contract also includes research and recommendations for web-based display (dashboard) of performance metrics over time

Thank You

