



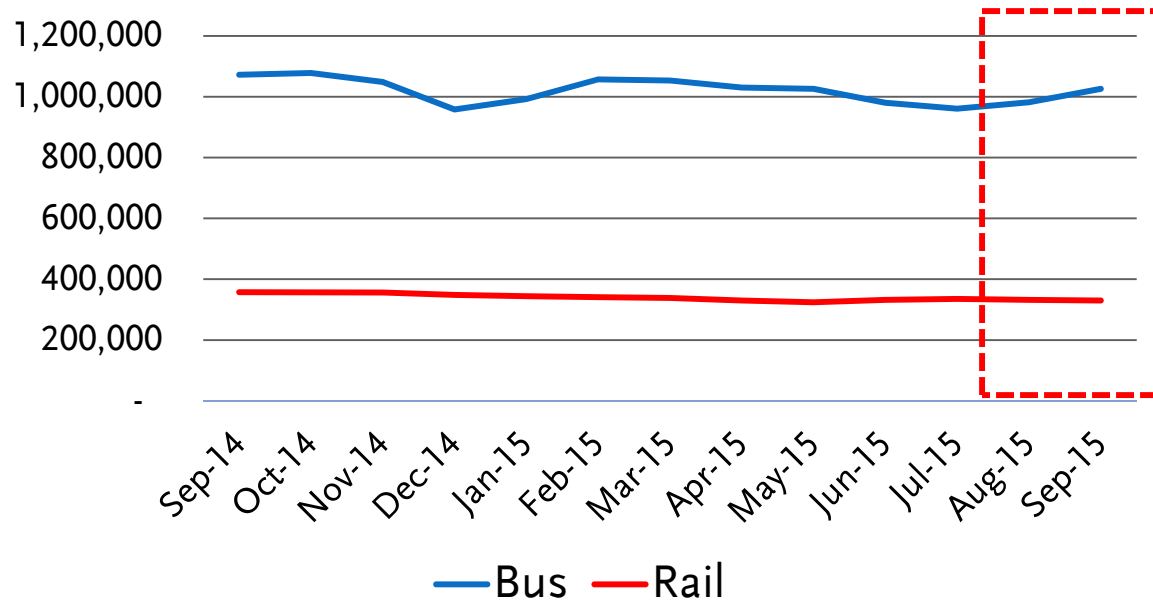
# Metro Bus & Rail Performance FY16 Quarter 1 November 19, 2015



**Metro**

# Bus & Rail Average Weekday Ridership

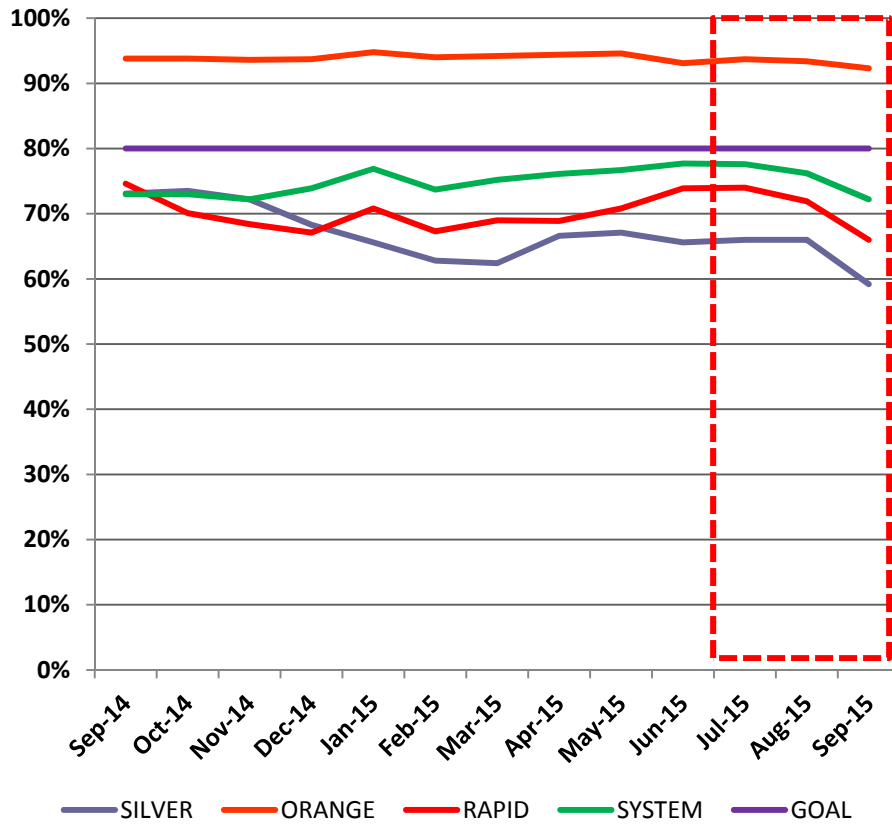
Bus & Rail Average Weekday Ridership/  
Monthly Estimates



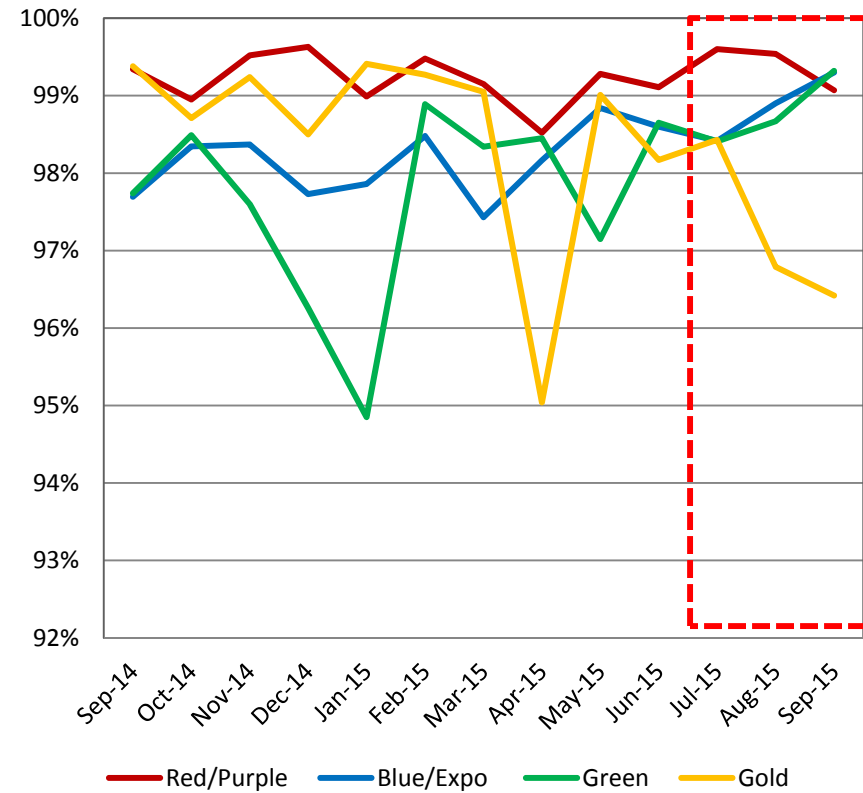
Fiscal Year	Bus	Rail
2014	1,083,697	358,513
2015	1,027,652	344,900

# Bus & Rail In Service On-Time Performance

## Bus ISOTP



## Rail ISOTP

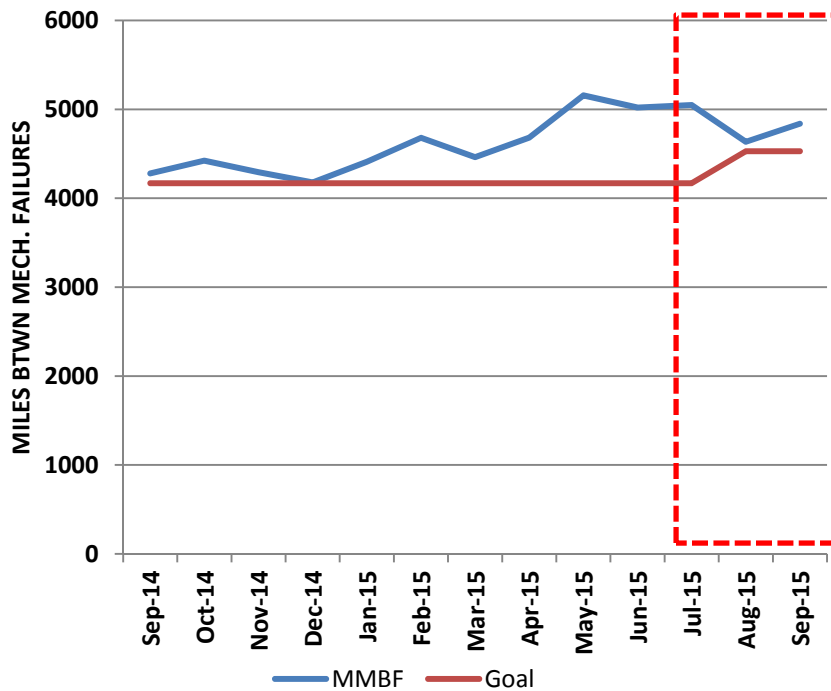


Line	FY15 Actual	FY15 Goal	FY16 Goal
Red/Purple	99.13%	99.9%	99.9%
Blue	99.41%	97.76%	99.4%
Green	97.39%	99.80%	99.4%
Gold	98.56%	99.9%	99.9%
Expo	99.14%	99.14%	99.1%



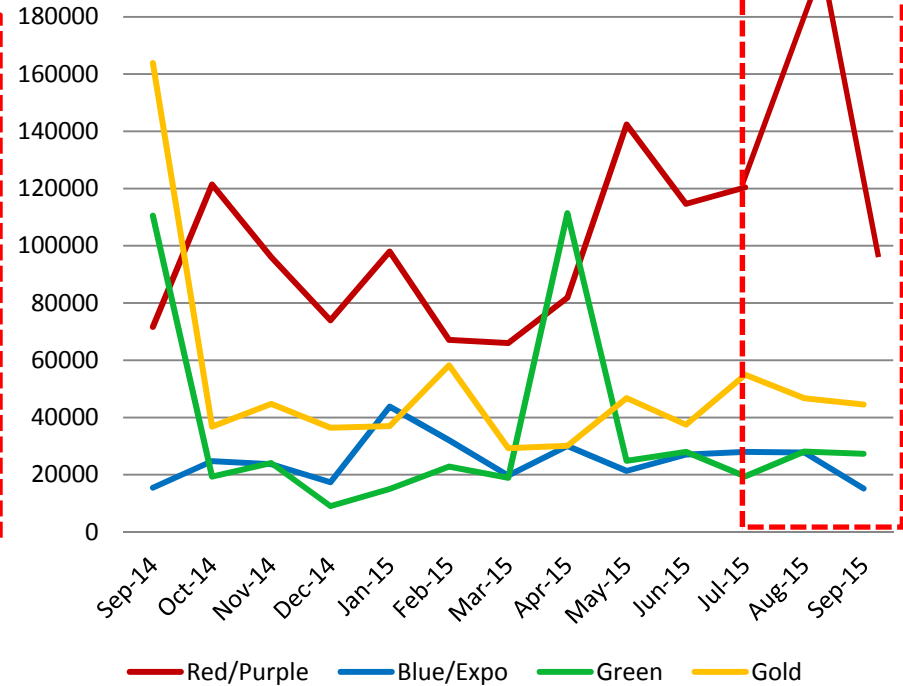
# Bus & Rail Mean Miles Between Mechanical Failures

## Directly Operated Bus Mean Miles Between Mechanical Failures



	FY 15 Actual	FY15 Goal	FY16 Goal
Bus	4,482	4,169	4,529

## Rail Mean Miles Between Mechanical Failures

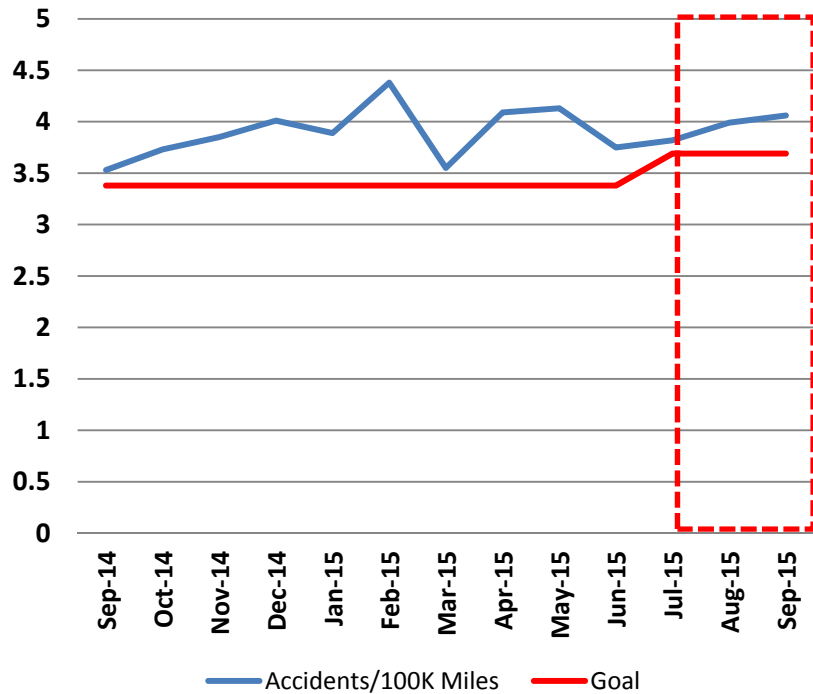


Line	FY15 Actual	FY 15 Goal	FY16 Goal
Red/Purple	85,090	36,000	86,792
Blue/Expo	23,716	15,000	23,934
Green	21,054	16,000	21,008
Gold	44,171	23,000	45,762



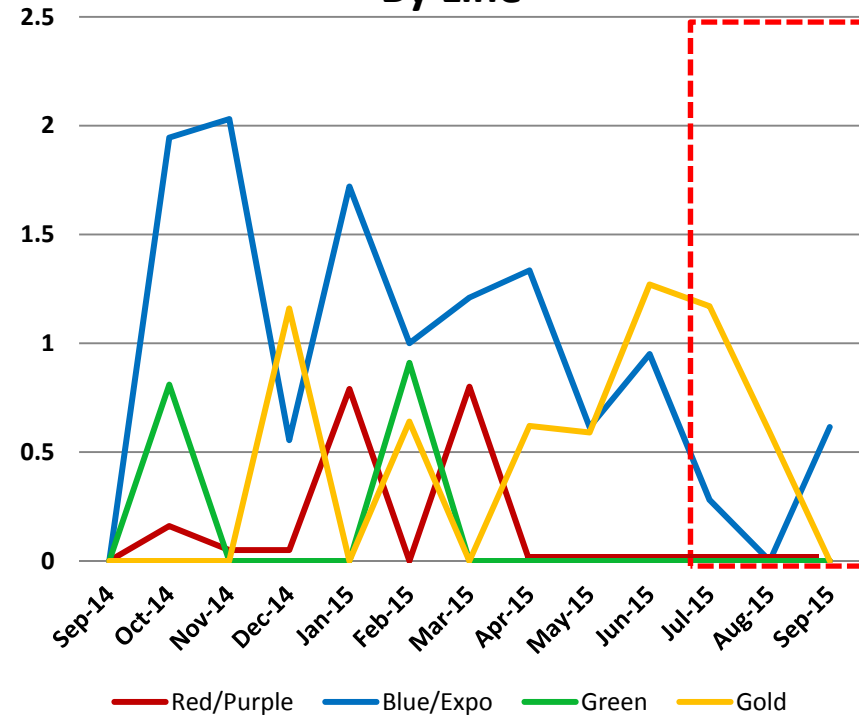
# Bus & Rail Vehicular Accidents per 100,000 Miles

## Bus Accidents/100K Miles



	FY 15 Actual	FY15 Goal	FY16 Goal
Bus	3.83	3.38	3.69

## Rail Vehicle Accidents/100K Miles By Line

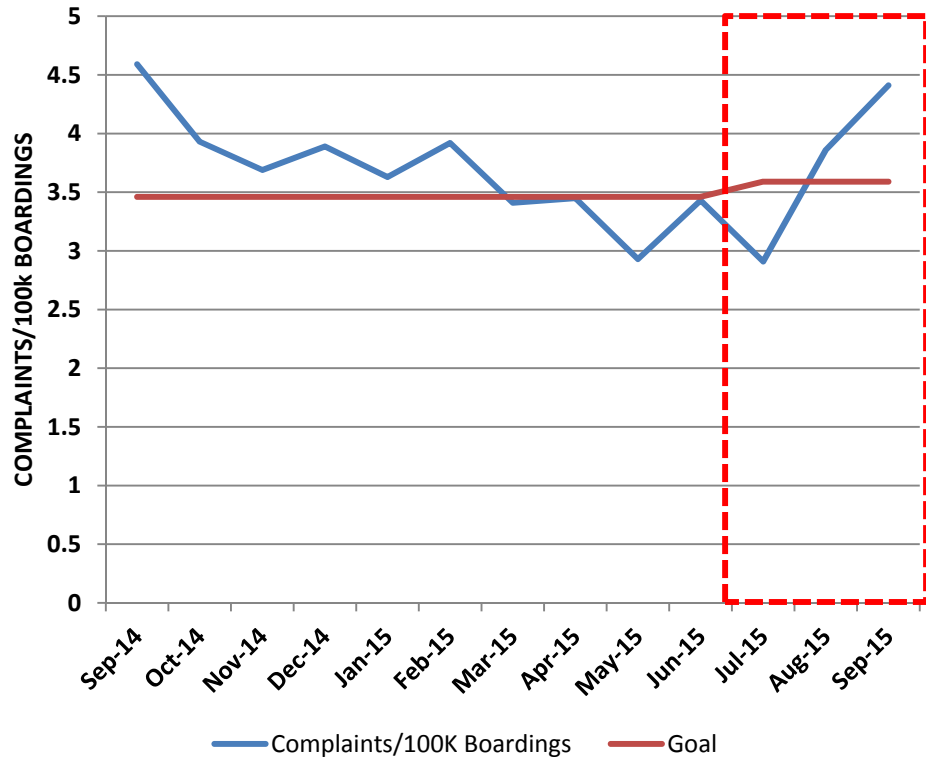


Line	FY 15 Actual	FY 15 Goal	FY16 Goal
Red/Purple	0.13	0.06	0.14
Blue	0.89	1.35	1.10
Green	0.14	0.06	0.15
Gold	0.54	0.41	0.47
Expo	1.02	1.35	1.10

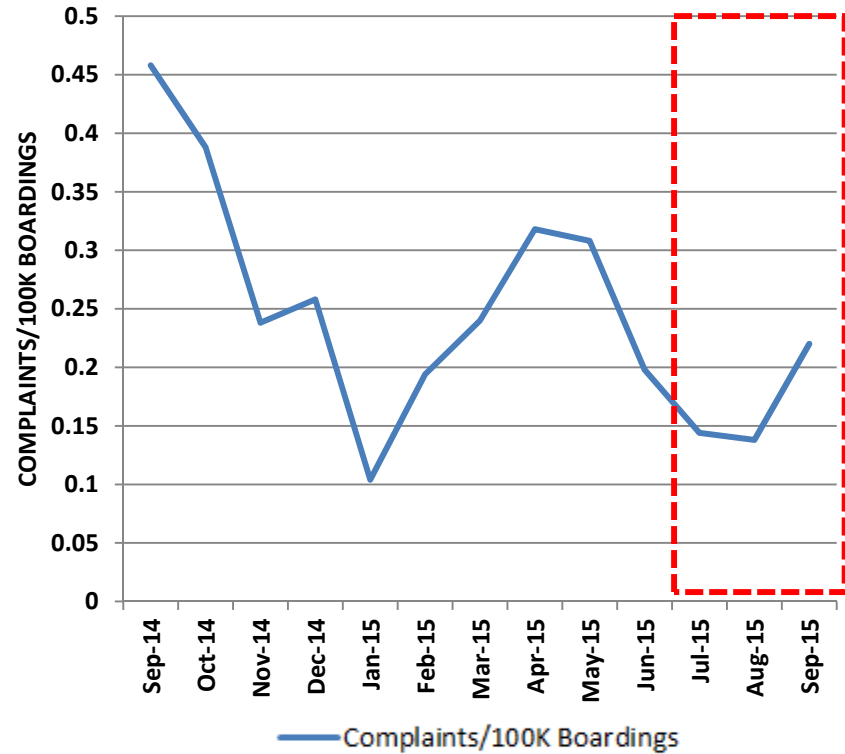


# Bus & Rail Customer Complaint Rates

## Bus Complaints/100K Boardings



## Rail Complaints/100K Boardings

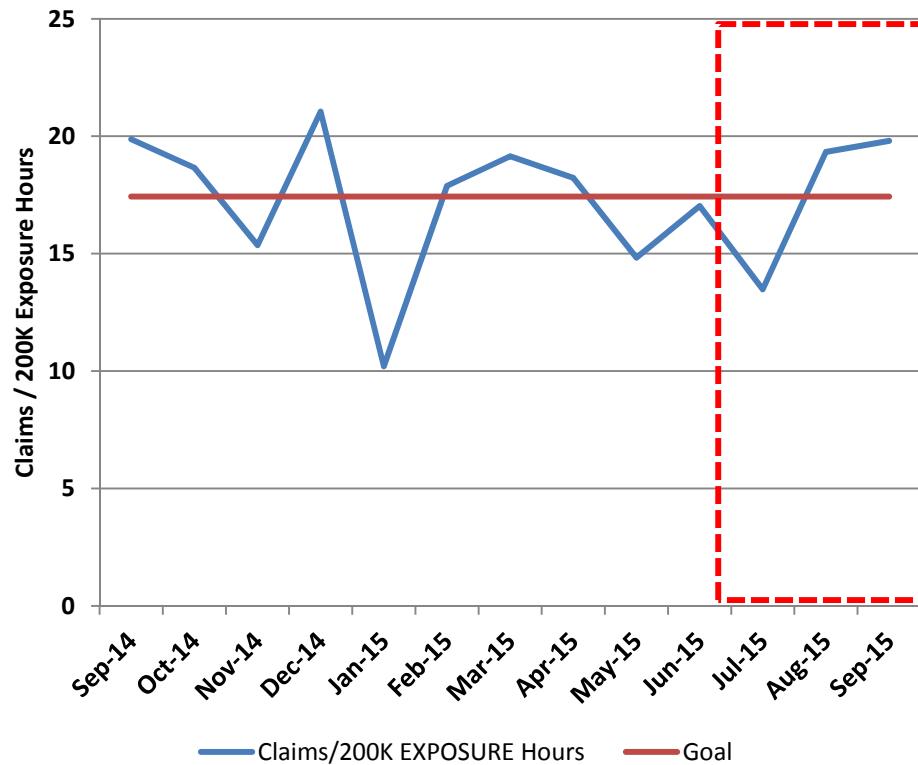


Line	FY 15 Actual	FY 15 Goal	FY16 Goal
Red/Purple	0.11	0.45	0.27
Blue	0.27	1.08	0.12
Green	0.32	0.90	0.31
Gold	0.34	1.19	0.34
Expo	0.38	1.08	0.40



# New Bus & Rail Worker's Compensation Claims

## Bus New Workers Compensation Claims/200K Exposure Hours



## Rail New Workers Compensation Claims /200K Exposure Hours

