

Program Management Major Project Status Report

Presented By

Richard Clarke

Chief Program Management Officer

















October 2018

Construction Committee

Los Angeles County Metropolitan Transportation Authority



PROJECT BUDGET & SCHEDULE STATUS SUMMARY CHART

Project	Cost Performance	Schedule Performance	Comments
Crenshaw/LAX			Project is 86.5 % complete. Contractor is continuing to fall behind schedule. The forecast revenue service date is under review.
Regional Connector			Project is 52% complete and proceeding on schedule and within budget.
Westside Purple Line Extension-Section 1			Project is 41% complete.
Westside Purple Line Extension-Section 2			Project is 11% complete.
Westside Purple Line Extension-Section 3			<ul style="list-style-type: none"> FTA approval for Entry into Engineering received. FTA approval for Letter of No Prejudice (LONP) is expected in Fall 2018. Award of Contract C1151 Tunnel will occur after LONP approval is received from the FTA.
Patsaouras Plaza			Project is approximately 65% complete. Metro issued Order of Suspension August 3 rd due to archaeological and Native American issues. Significant impacts to project schedule and budget expected.
Willowbrook/Rosa Parks Station			Early Start Construction Work is 95% complete. Package A+C Work, completed demolition of existing buildings and started grading operations.
Metro Blue Line Projects			Early Start Work is at 85% completion. Establishing baseline schedule for all three contracts and Metro internal work.
I-210 Barrier Replacement			Finding effective mitigation measures to some of the non-standard freeway features along with mitigation measures to alleviate freeway traffic disruption during construction are delaying the project.

October 2018



On target



Possible problem



Major issue



Metro 2

Construction Committee

Los Angeles County Metropolitan Transportation Authority

CRENSHAW/LAX TRANSIT PROJECT

 BUDGET		
	Current	Forecast
TOTAL COST	\$2,058M	\$2,058M

 SCHEDULE		
	Current	Forecast
REVENUE OPERATION	Fall 2019	Under Review

- Overall Project Progress is 86.5% complete; working with contractor to address schedule
- Contractor continues critical underground structures, track, systems and testing activities
- Removal of street decking/street restoration continues along Crenshaw Blvd



Street restoration at Martin Luther King Jr. Station

October 2018



On target



Possible problem



Major issue

Construction Committee

Los Angeles County Metropolitan Transportation Authority



Metro 3

REGIONAL CONNECTOR TRANSIT PROJECT

OK BUDGET

	Current	Forecast
TOTAL COST	\$1,810M	\$1,810M

* Includes Board approved LOP budget plus finance costs.

- Overall Project Progress is 52%
- Underground:** Construction continues in left, right and center drifts of the crossover cavern utilizing Sequential Excavation Method (SEM); walkway installation activities are underway in tunnels
- Little Tokyo/Arts District Station:** Excavation and related support of utilities continues at both the Station and Wye Junction
- Historic Broadway Station:** Concrete placement is underway in entrance invert
- Grand Av Arts/Bunker Hill Station:** Permanent structural concrete construction continues at station invert, walls, sumps, and tunnel eye
- Flower Street:** Decking is complete; excavation and utility protection are ongoing; structural concrete operations have been initiated

OK SCHEDULE

	Current Winter	Forecast Winter
REVENUE OPERATION	2021-2022	2021-2022



Rebar and UMP installation at Grand Av Arts/Bunker Hill Station



Excavation around utilities and deck beams on Flower Street

October 2018



On target



Possible problem



Major issue

Construction Committee

Los Angeles County Metropolitan Transportation Authority



Metro 4

WESTSIDE PURPLE LINE EXTENSION – SECTION 1

BUDGET

	Current	Forecast
TOTAL COST*	\$3,154M	\$3,154M

* Includes Board approved LOP budget plus finance costs.

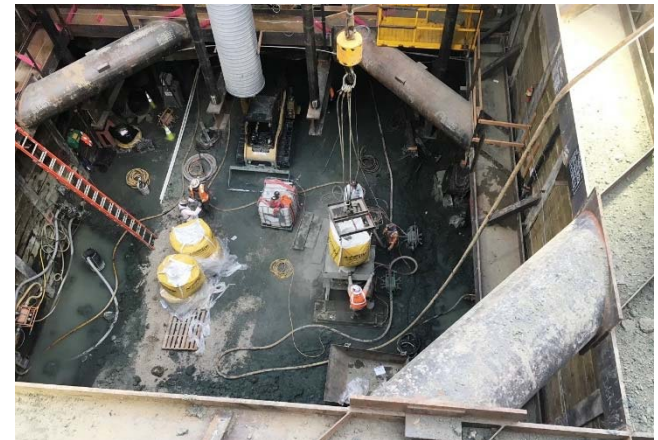
SCHEDULE

	Current	Forecast
REVENUE	Fall	Fall
OPERATION	2024 (FFGA)	2023

- Overall Project Progress is 41% complete.
- Wilshire/Western Retrieval Shaft:** Support bracing for the Blast Relief Shaft (BRS) is complete and Level C excavation/bracing continues. Excavation to the bottom of the Western Retrieval Shaft anticipated in October 2018.
- Wilshire/La Brea Station:** TBM assembly, testing and tunnel related track installation is near completion. Tunneling is planned to start in September 2018.
- Wilshire/Fairfax Station:** Level D excavation, waler/strut installation continues. Installation of canopy/soil nails (1st Phase) is nearing completion. Fine grading has commenced with mudmat pours scheduled to start in December 2018.
- Wilshire/La Cienega Station:** Level A waler/strut installation and Level B excavation for the main station box continues. Maintenance of surface aesthetics per the COBH MOA is ongoing.



TBM Assembly at Wilshire/La Brea Station



Wilshire/Western Retrieval Site

October 2018
Construction Committee

Los Angeles County Metropolitan Transportation Authority



On target



Possible problem



Major issue



Metro 9

WESTSIDE PURPLE LINE EXTENSION – SECTION 2

BUDGET

	Current	Forecast
TOTAL COST*	\$2,530M	\$2,530M

* Includes Board approved LOP budget plus finance costs.

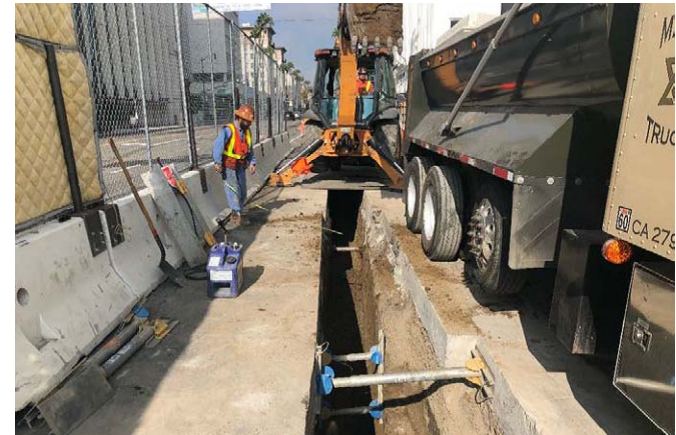
SCHEDULE

	Current Winter 2026 (FFGA)	Forecast Summer 2025
REVENUE		
OPERATION		

- Overall project progress is 11% complete.
- Final design progress is 80% complete.
- Century City Constellation:
 - Civil work for LADWP Power completed in August 2018, and civil work for AT&T will complete in late October 2018. Cable pulling and splicing will continue until November 2019.
 - Setup of construction staging areas is ongoing.
- Wilshire/Rodeo:
 - Southern California Gas and AT&T utility relocations completed in October 2018.
 - City of Beverly Hills approved Memorandum of Agreement (MOA) for the C1120 Contract in August 2018.



Concrete Placement for Staging Area Driveway in Century City



SCG Utility Work in Beverly Hills

October 2018



On target



Possible problem



Major issue

Construction Committee

Los Angeles County Metropolitan Transportation Authority



Metro 10

WESTSIDE PURPLE LINE EXTENSION – SECTION 3

OK BUDGET

	Current	Forecast
TOTAL COST*	TBD	\$3,664M

* Includes finance costs.

OK SCHEDULE

	Current	Forecast
REVENUE OPERATION	TBD	Winter 2027

- FTA approval for Entry into Engineering received.
- FTA approval for Letter of No Prejudice (LONP) received.
- C1151 Tunnel Contract – Contract award anticipated late November/early December.
- C1152 Stations, Trackwork and Systems Contract – Request for Qualifications (RFQ)/Request for Proposals (RFP) was issued on September 15, 2017. Proposals were received on August 22, 2018 and are under review.
- C1153 Advanced Utility Relocations (AUR) Contract – Overall progress is 42% complete.



October 2018



On target



Possible problem



Major issue


Construction Committee

Los Angeles County Metropolitan Transportation Authority



Metro 11

PATSAOURAS PLAZA BUSWAY STATION

 BUDGET	Current	Forecast
TOTAL COST	\$39.7M	\$TBD

 SCHEDULE	Current	Forecast
SUBSTANTIAL COMPLETION	Winter 2018	Fall 2019

- Overall project progress approximately 65% complete
- Metro sent Order of Suspension to PBPS contractor on August 3, 2018 due to archaeological and Native American resource issues
 - Current construction resumption anticipated January 7, 2019
 - Project team is working diligently to resume construction with the consulting parties:
 - Federal Transit Administration
 - State Office of Historic Preservation
 - Advisory Council for Historic Preservation
 - Caltrans
 - Native American tribes
- Construction resumption is dependent upon successful consultation with the parties and completion of the following final drafts sent to the consulting parties on September 13, 2018:
 - Project level Programmatic Agreement (New)
 - Revised 2012 PBPS Cultural Resources Mitigation and Discovery Plan
 - Archaeological Identification, Evaluation and Treatment Plan (New)
- Archaeological and Native American issues anticipated to deplete project contingency requiring LOP budget increase once full extent of impact realized

October 2018



On target



Possible problem



Major issue

Construction Committee

Los Angeles County Metropolitan Transportation Authority



Metro 8

WILLOWBROOK/ROSA PARKS STATION

OK BUDGET		
	Current	Forecast
TOTAL COST	\$109.3M	\$109.3M

OK SCHEDULE		
	Current Summer 2020	Forecast Summer 2020
SUBSTANTIAL COMPLETION		

- Early Start Phase (Package E) Construction at 95% completion.
- Removal of AC pipe and final installation of GSW water line is underway.
- Place curb on east side of Willowbrook Avenue West.
- Begin demobilization and end early start construction.
- Excavate and install underground utilities and building footings.
- Federal Transit Administration has approved the new southern crossing.



Early Start Construction and Demolition for Package A+C

October 2018



On target



Possible problem



Major issue


Construction Committee

Los Angeles County Metropolitan Transportation Authority



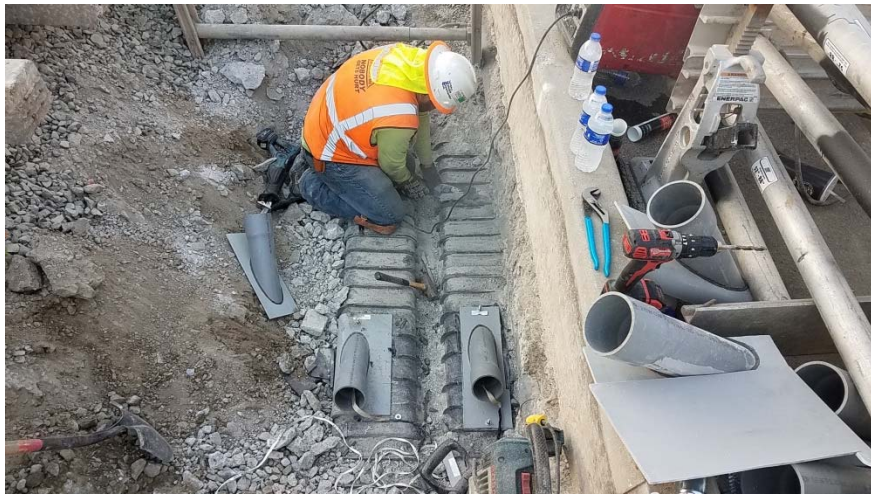
Metro 9

THE NEW BLUE

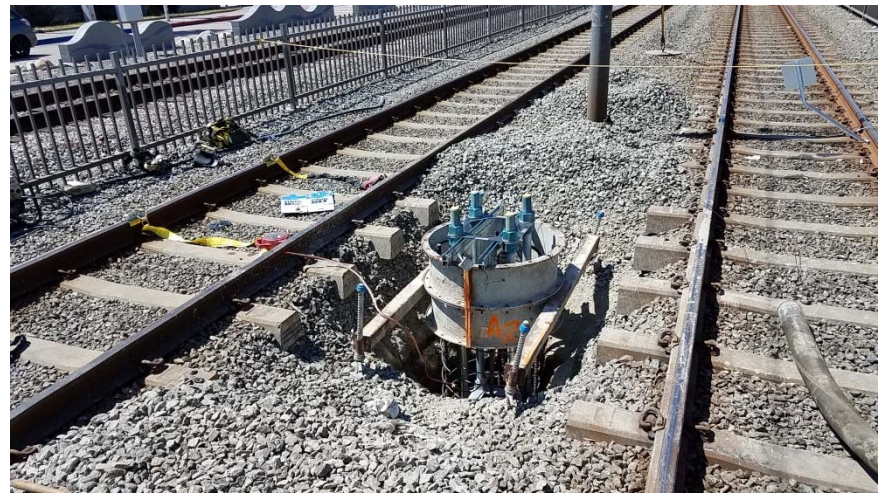
 BUDGET	Current	Forecast
TOTAL COST	\$221.3M	\$221.3M

 SCHEDULE	Current	Forecast
SUBSTANTIAL COMPLETION	Fall 2019	Fall 2019

- MBL Resignaling Design is at 95%
- MBL Resignaling Early Start work is at 85% (Potholing, foundation and other underground construction)
- Establishing baseline construction schedule for all three projects (including Rosa Parks Willowbrook Station)
- The New Blue project is scheduled to begin January 2019




Modifying Existing Duct Bank



New OCS Foundation

October 2018

 On target

Possible problem

 Major issue

Construction Committee

Los Angeles County Metropolitan Transportation Authority



I-210 BARRIER REPLACEMENT PROJECT

◆ BUDGET			◆ SCHEDULE		
TOTAL COST	Current \$11.08M Design	Forecast \$11.08M Design	Complete Design	Current Summer 2019	Forecast Summer 2019

- Obtained concurrence from Caltrans that the segment of the project from Michillinda to Iconic Bridge in both eastbound and westbound directions the barriers could be replaced without closure of HOV lane during construction:
 - Minimized traffic disruption during construction within this segment
 - Separate environmental document and final design for this segment will be prepared sooner while the environmental and final design of remaining portion that is more involved is completed.
- Continuing engineering, traffic analysis and coordination.



Newly Installed Caltrans Freeway Sign



Incident in 2014



Newly Installed Speed Limit Sign

October 2018



On target



Possible problem



Major issue

Construction Committee

Los Angeles County Metropolitan Transportation Authority



Metro 11

I-5 NORTH: SR 118 TO SR 134



October 2018
Construction Committee
Los Angeles County Metropolitan Transportation Authority

I-5 NORTH: SR 118 TO SR 134

Project Managed by Caltrans :

- Approved budget: \$853.96 M
- Estimated Cost to Complete Construction: TBD

Accomplishments:

Seg. 1: SR118 to SR170:

Open to traffic. Contract acceptance and close out in progress

Seg. 2: SR170 to Buena Vista:

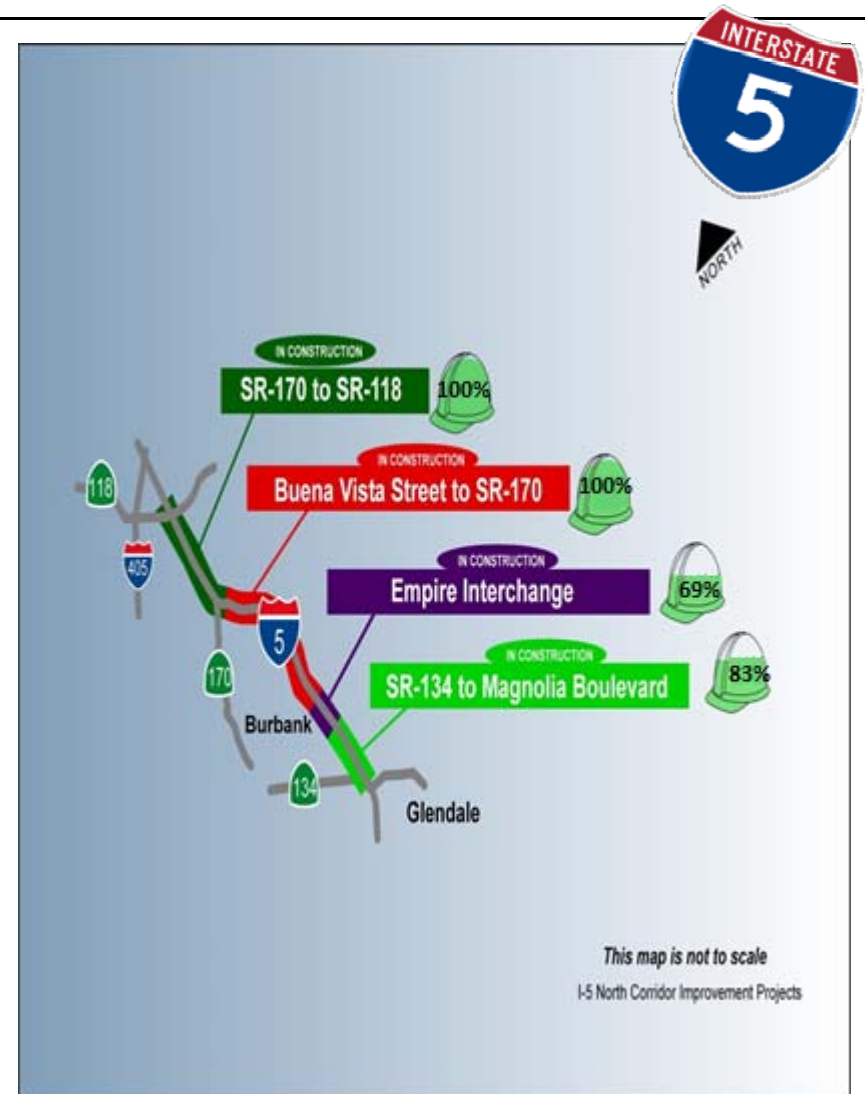
Open to traffic. Contract acceptance and close out in progress. Final Settlement approved by the Board in September 2018.

Seg. 3: Buena Vista to Magnolia

Construction in progress (69% Complete) including Empire Avenue Interchange

Seg 4: Magnolia Blvd to SR134:

Construction in progress (83% Complete)



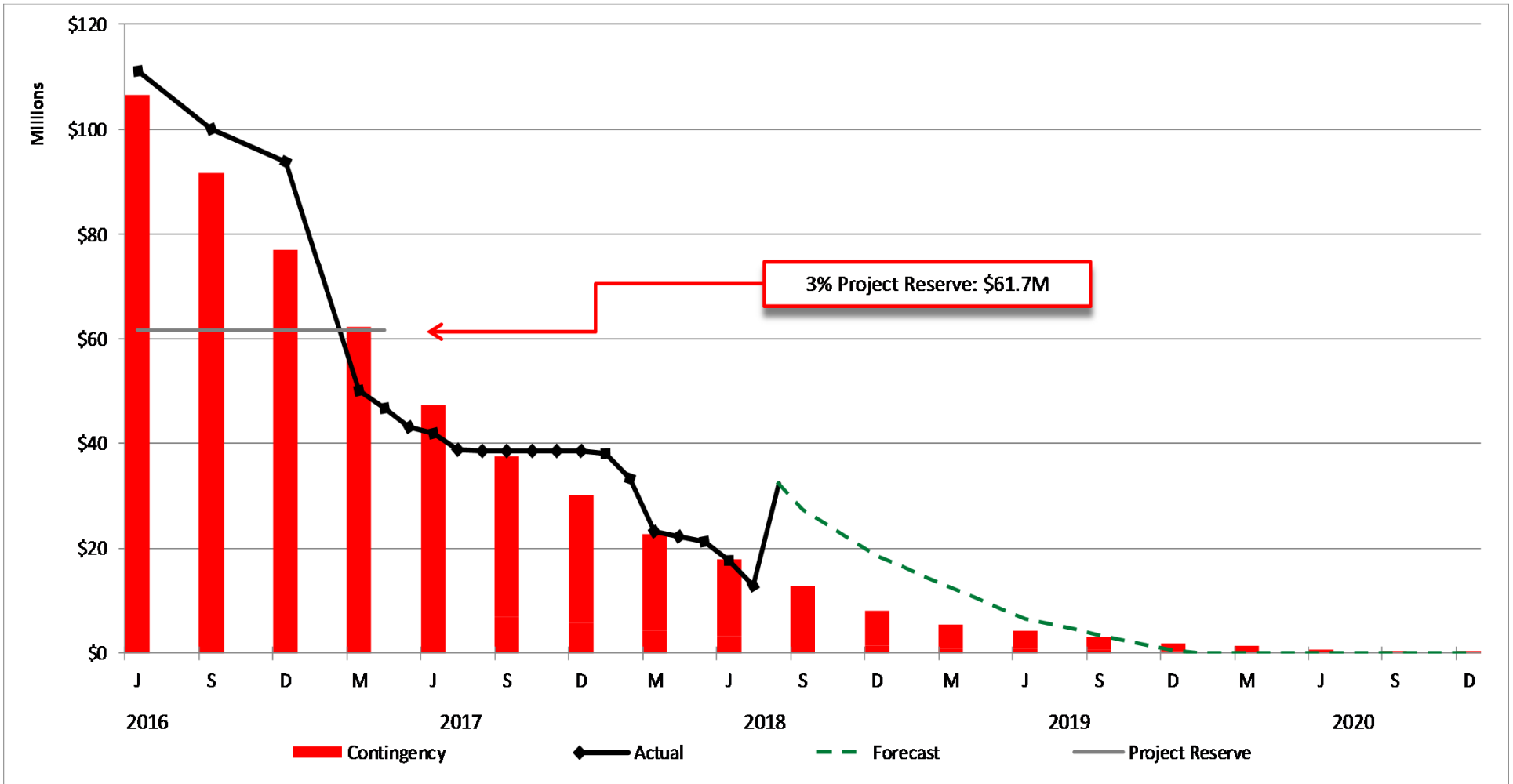
October 2018

Construction Committee

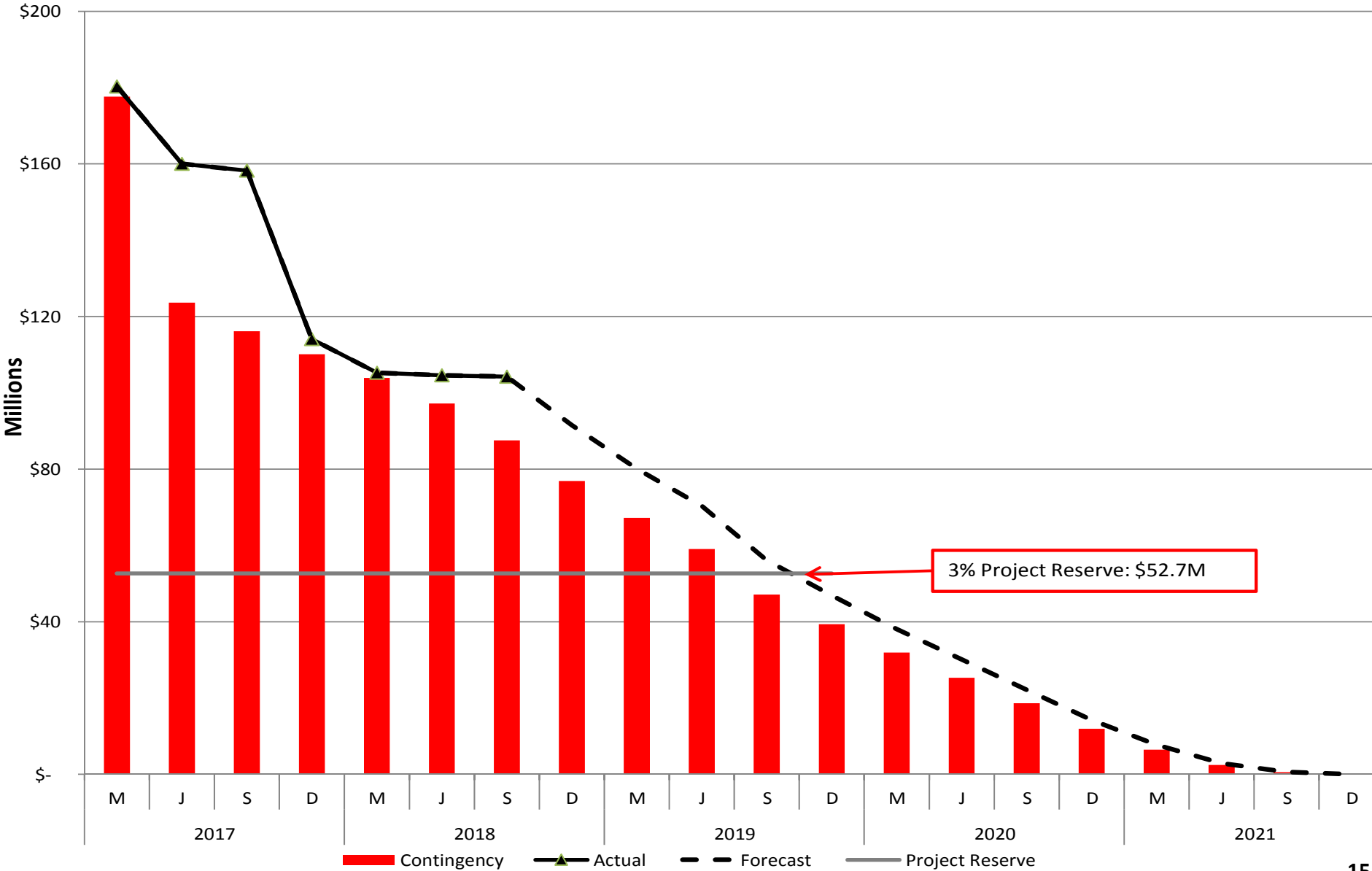
Los Angeles County Metropolitan Transportation Authority

Crenshaw/LAX Transit Project Project Cost Contingency Drawdown

August 2018



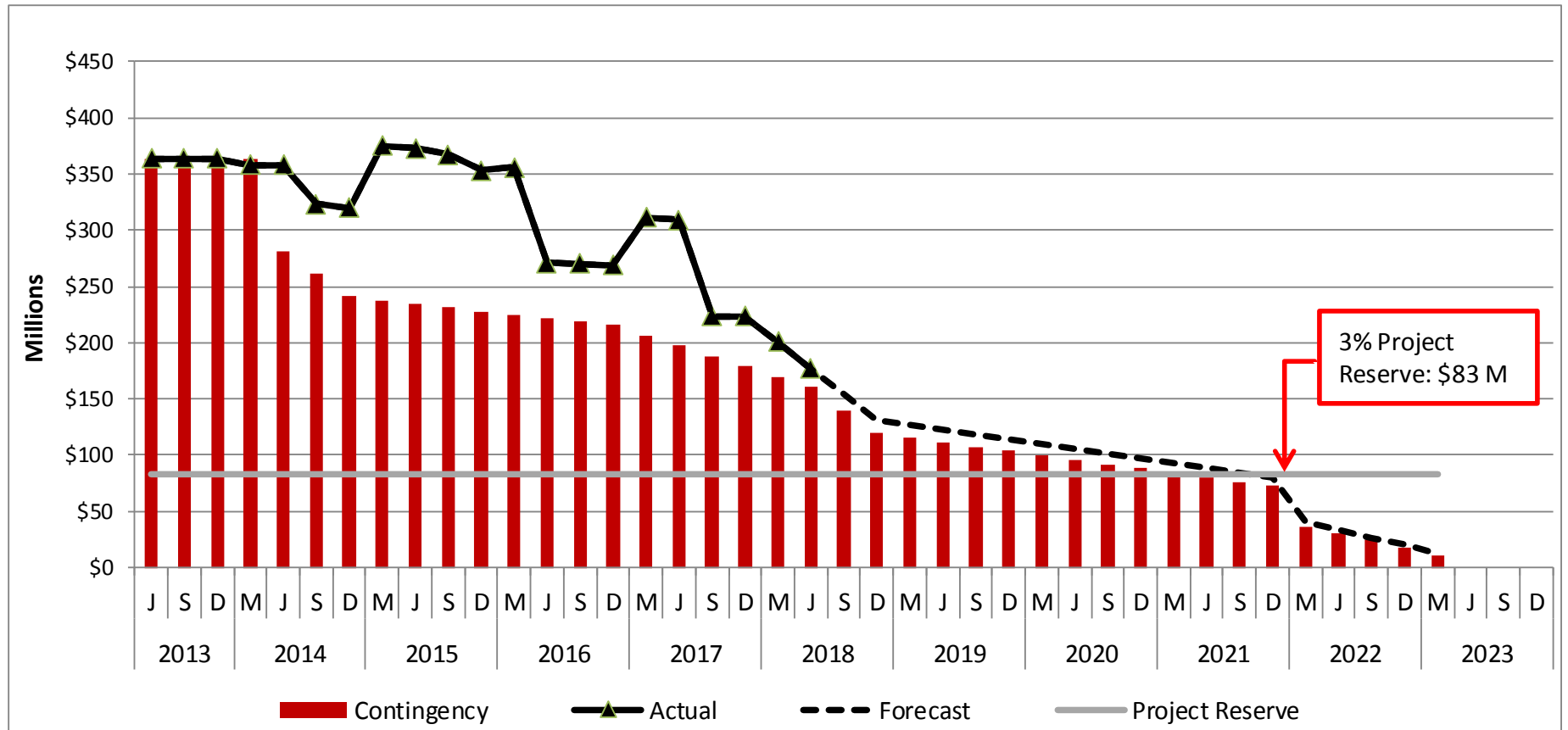
Regional Connector Project Cost Contingency Drawdown



Westside Purple Line Extension – Section 1

Project Cost Contingency Drawdown

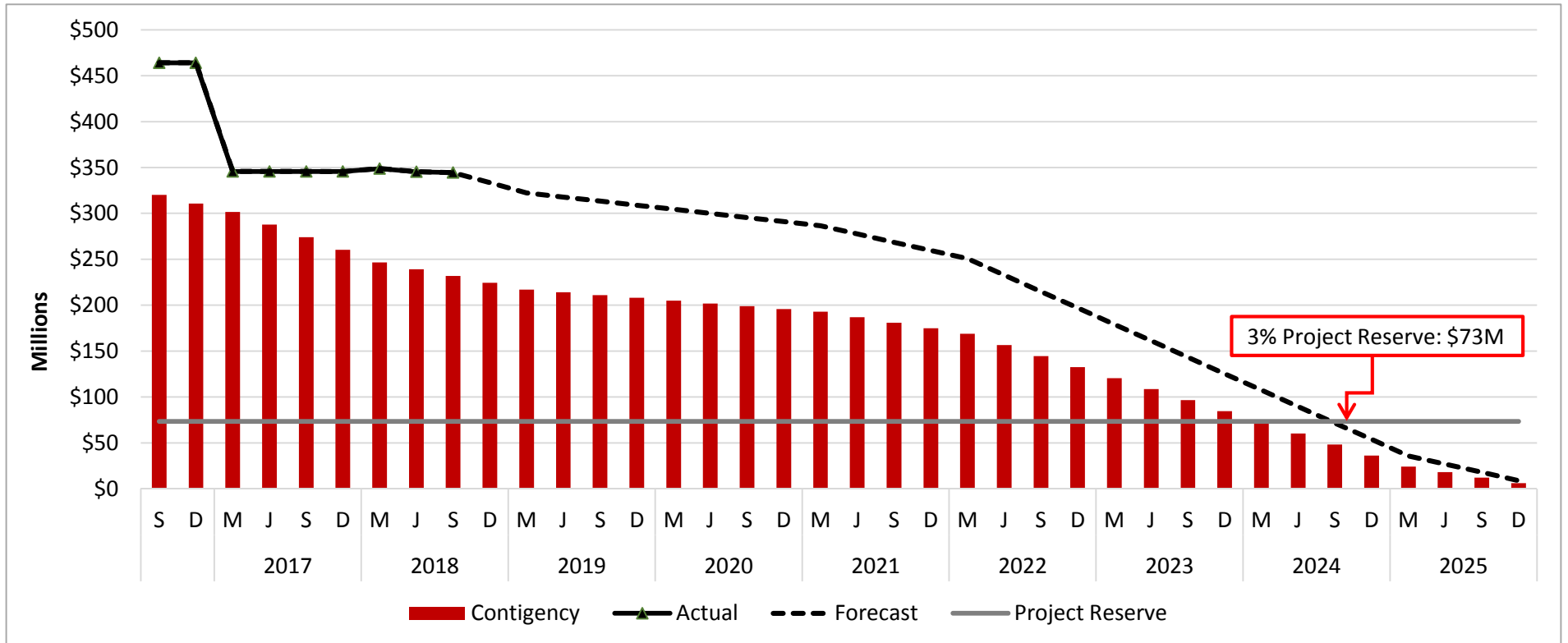
August 2018



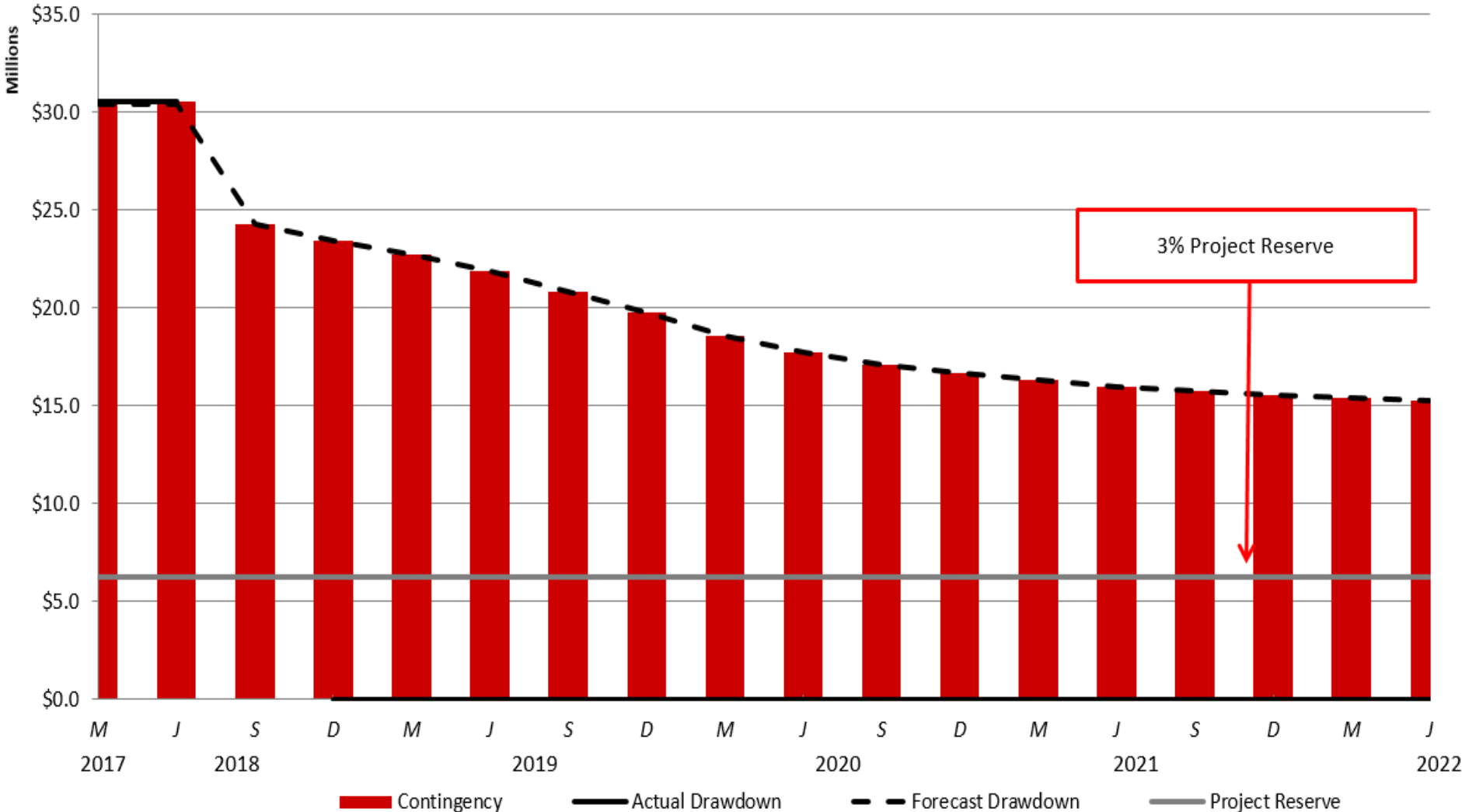
Westside Purple Line Extension – Section 2

Project Cost Contingency Drawdown

August 2018



The New Blue Project Cost Contingency Drawdown



- Blue Line Signal Rehabilitation
- Blue Line Track and System Refurbishment