

# **December 2018 Transit Policing Performance Summary**

**February 21, 2019**

**Operations, Safety and Customer Experience Committee**

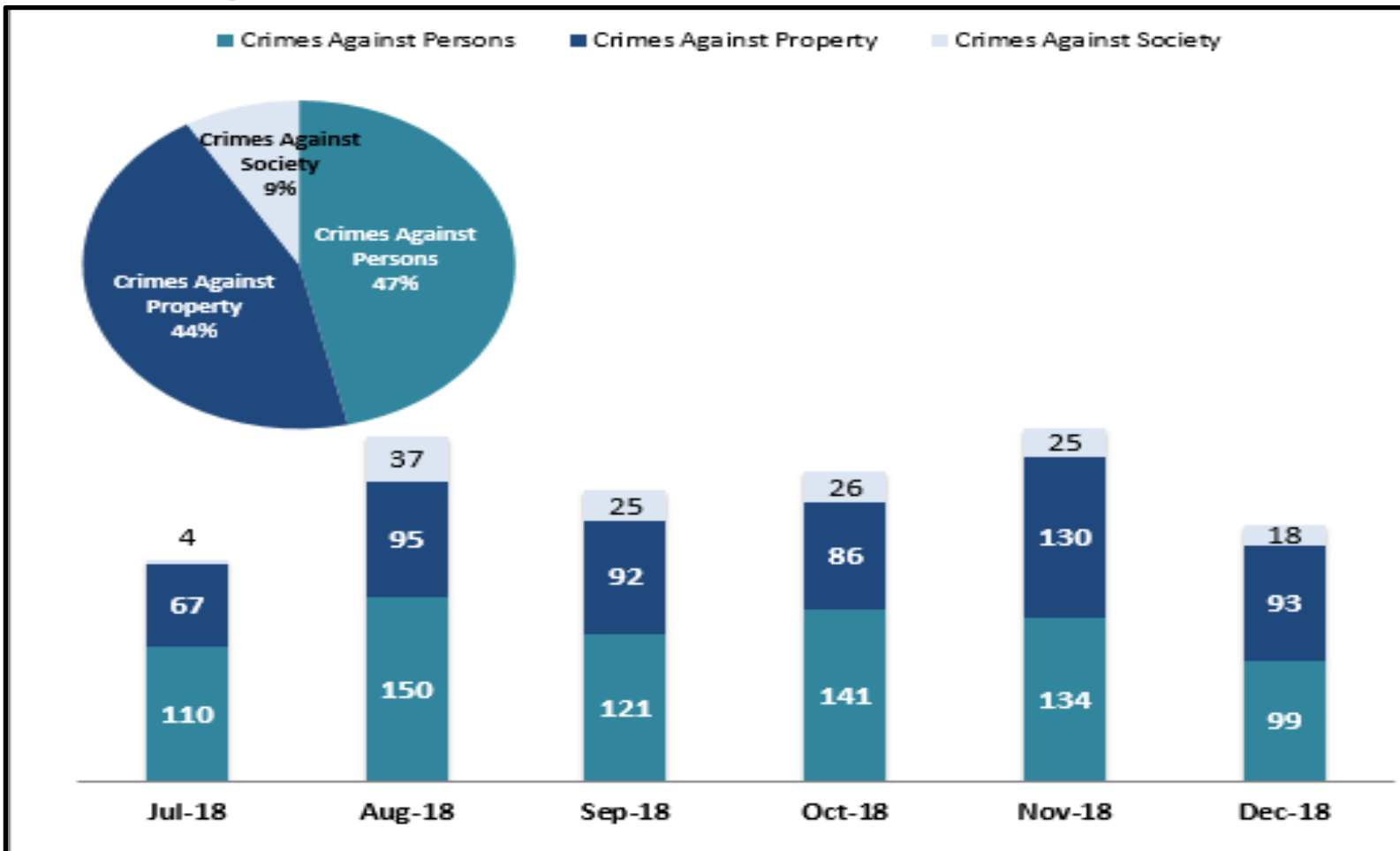


# Key Performance Indicators

	2017	2018
	December	December
<b>CRIMES AGAINST PERSONS</b>		
Homicide	0	0
Rape	1	4
Robbery	35	22
Aggravated Assault	21	19
Aggravated Assault on Operator	0	1
Battery	66	38
Battery Rail Operator	8	4
Sex Offenses	16	11
<b>SUB-TOTAL</b>	<b>147</b>	<b>99</b>
<b>CRIMES AGAINST PROPERTY</b>		
Burglary	1	0
Larceny	68	72
Bike Theft	7	9
Motor Vehicle Theft	3	4
Arson	0	0
Other	0	2
Vandalism	15	6
<b>SUB-TOTAL</b>	<b>94</b>	<b>93</b>
<b>CRIMES AGAINST SOCIETY</b>		
Weapons	5	5
Narcotics	4	9
Trespassing	1	4
<b>SUB-TOTAL</b>	<b>10</b>	<b>18</b>
<b>TOTAL</b>	<b>251</b>	<b>210</b>
<b>ENFORCEMENT EFFORTS</b>		
Arrests	181	223
Citations	1,840	2,007
Fare Checks	336,635	180,320
Calls for Service	1,447	866

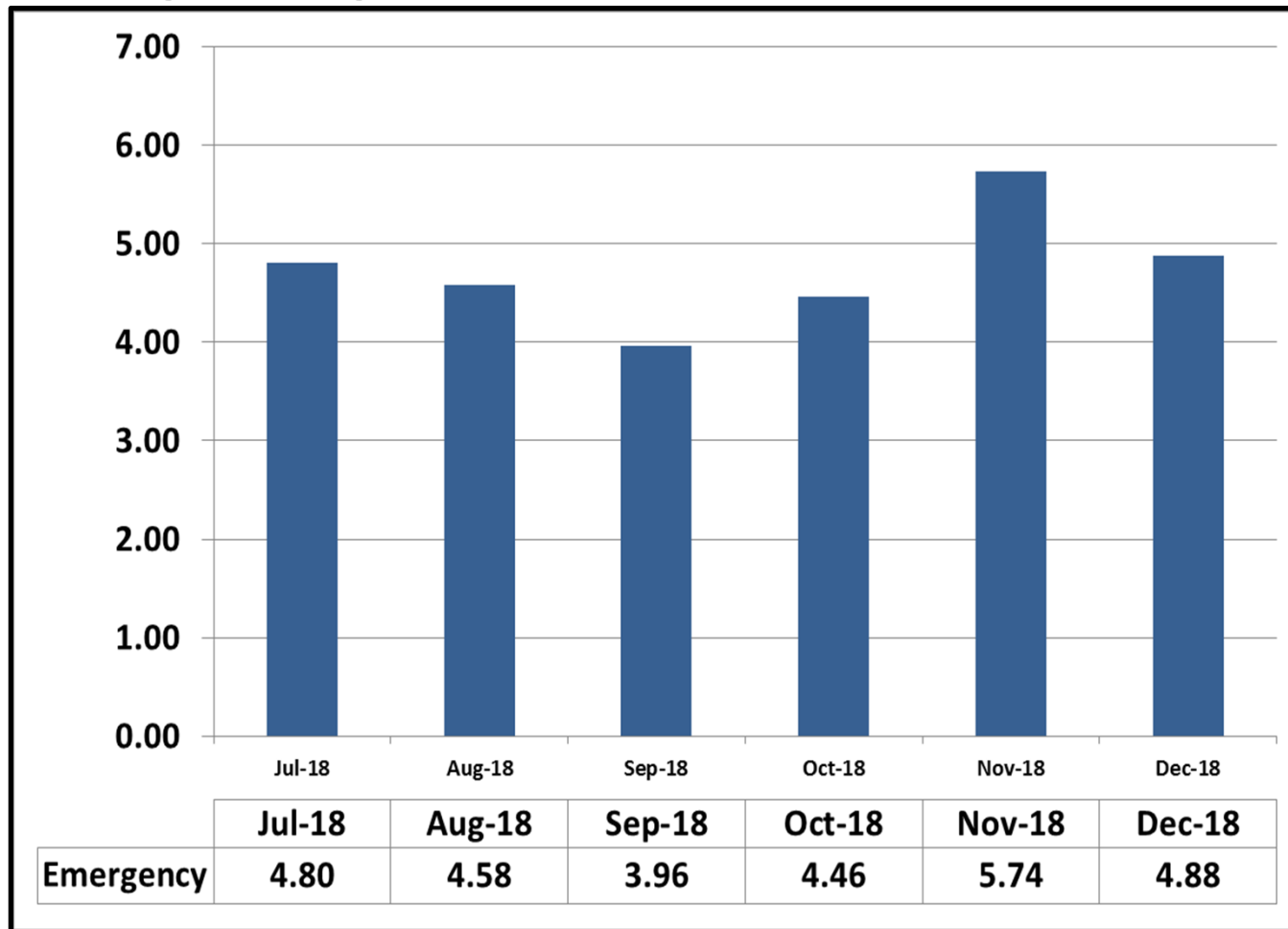
# Key Performance Indicators

## Crimes Against Persons, Property, and Society - December 2018



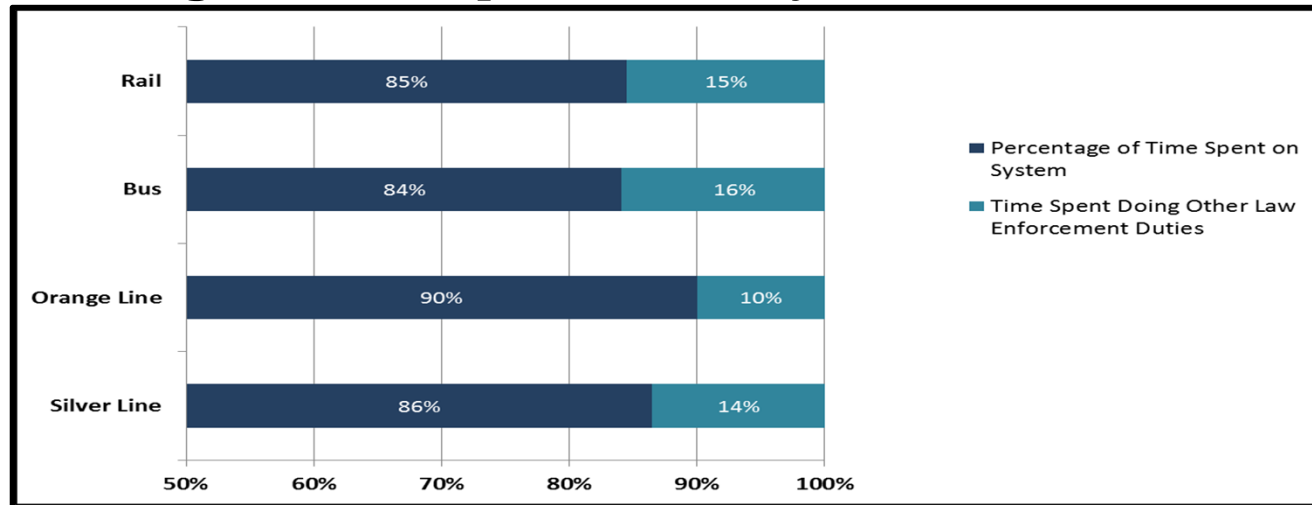
# Key Performance Indicators

## Average Emergency Response Times - December 2018

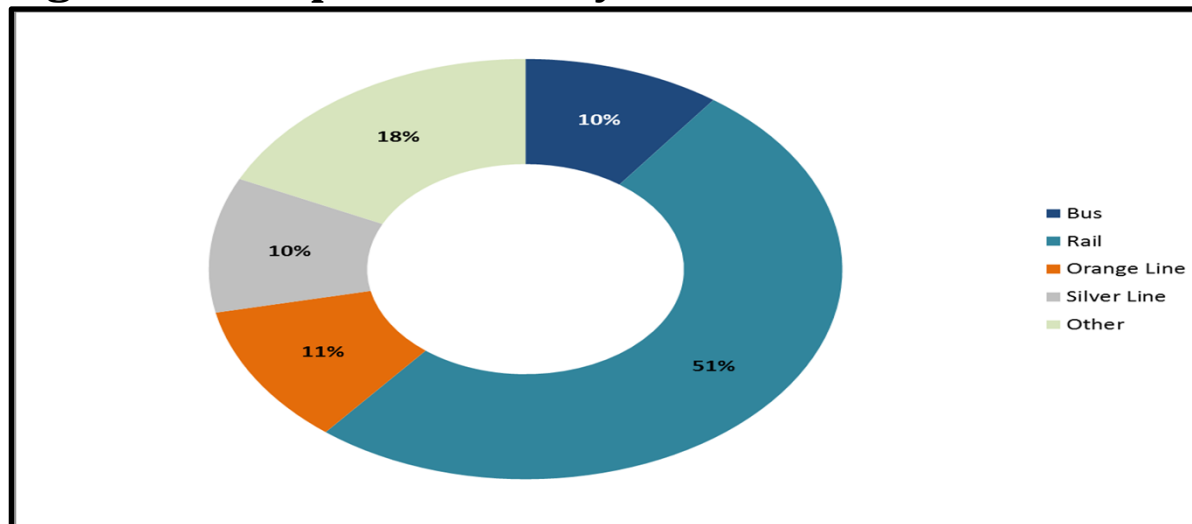


# Key Performance Indicators

## Percentage of Time Spent on the System - December 2018

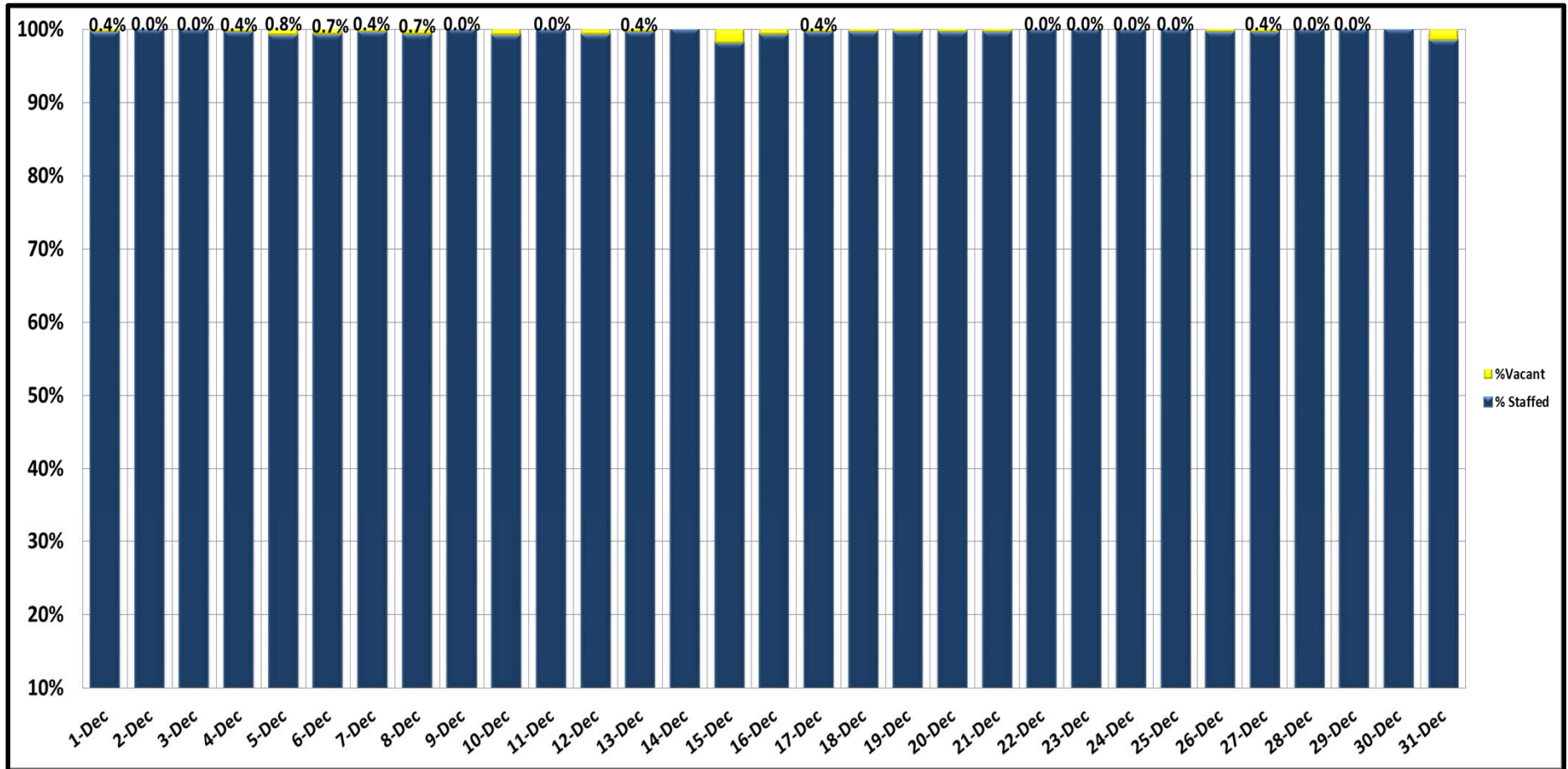


## Percentage of Time Spent on the System as a Whole - December 2018



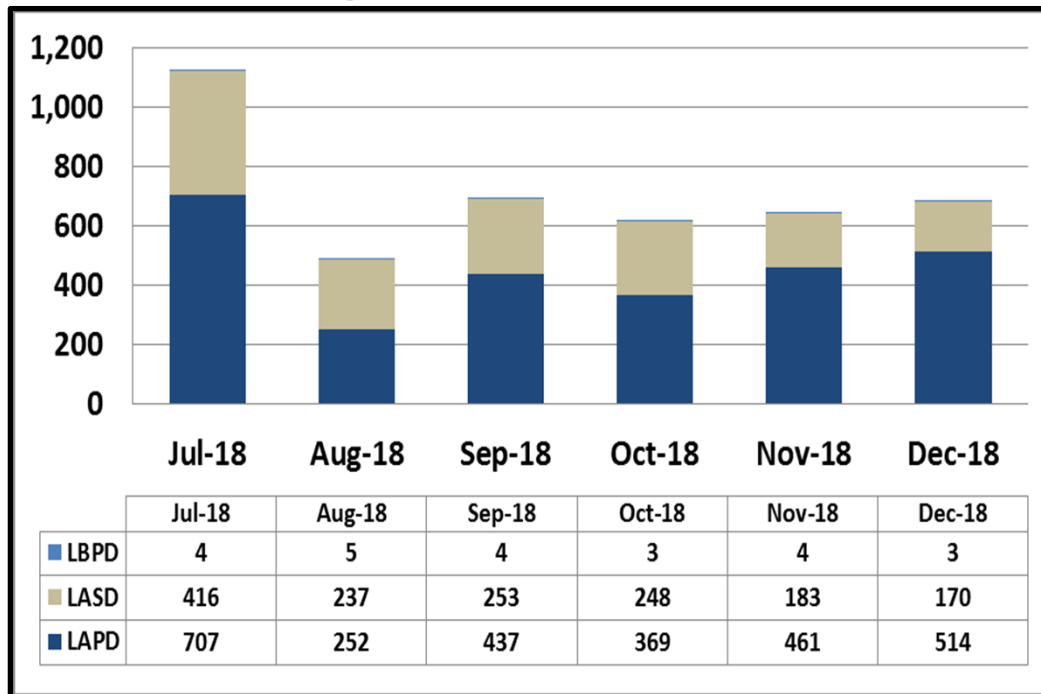
# Key Performance Indicators

## Ratio of Staffing Levels vs Vacant Assignments - December 2018



# Key Performance Indicators

## Grade Crossing Operations - December 2018

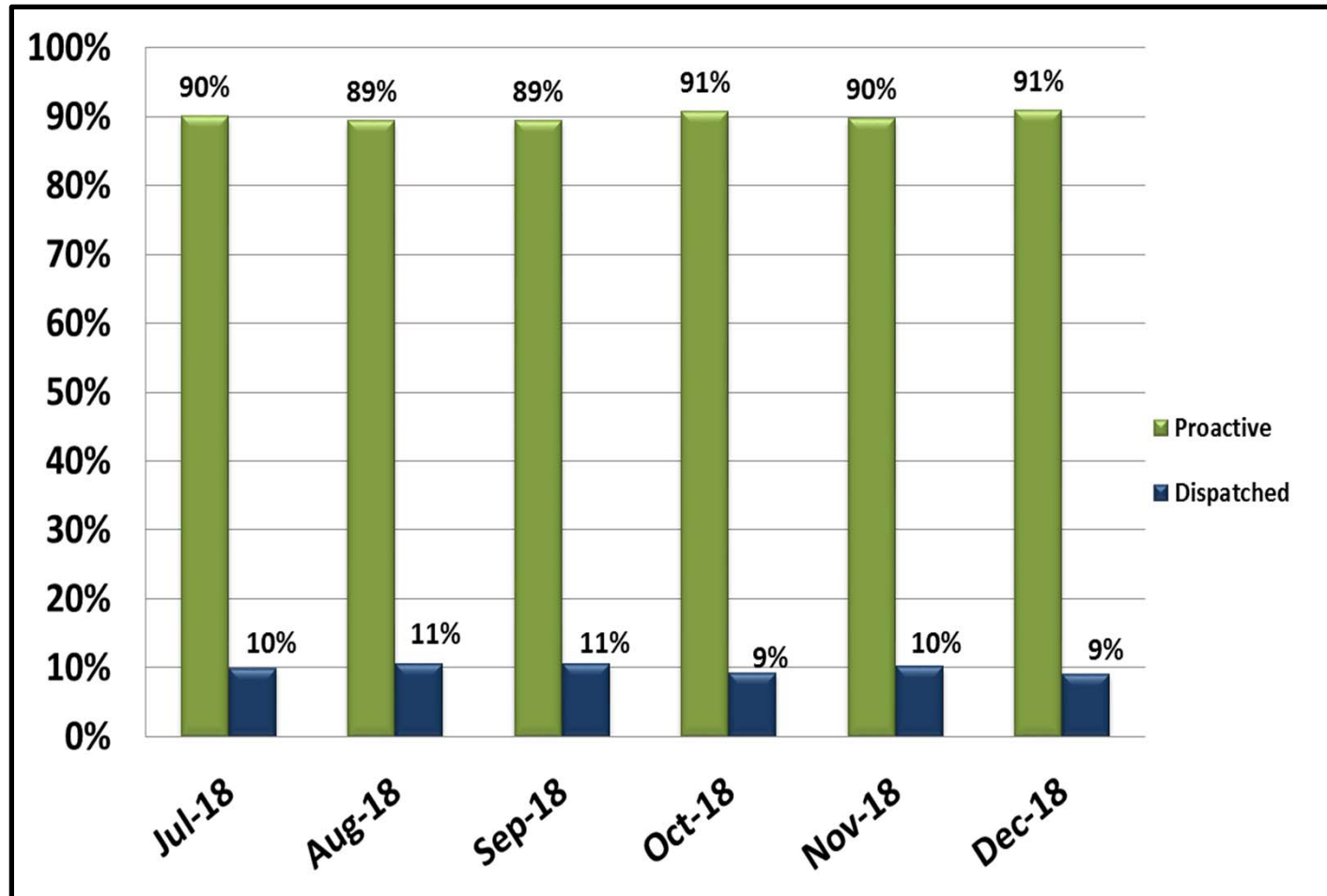


### Grade Crossing Operation Locations October:

1. Blue Line Stations (145)
2. Expo Line Stations (335)
3. Gold Line Stations (207)

# Key Performance Indicators

## Ratio of Proactive vs Dispatched Activity - December 2018





# Homeless Outreach

**Current investment: over \$5M annually for the C3 Outreach teams (40 personnel)**

**Recently added:**

- **LAPD: 10 full-time HOPE Officers**
- **LASD: MET Teams increased from 6 to 10**
- **LBPD: 2 Quality of Life Officers**

**Metro is also working with a consultant**