

System Safety, Security and Operations Report



Metro

James T. Gallagher
January 21, 2016

Division 13



Background Information

- Located on Vignes & Cesar Chavez Avenue
- First new operating division Metro has constructed in over 30 years
- Accommodates 200 CNG 40-foot buses
- 275,000 gallon underground storm water retention for reuse in bus washing
- First LEED-Gold facility
- Modern employee work spaces



Metro

Operation Activation Plan

Information



Hours of Operation

- Monday – Friday
- First Pull Out: 4:56 a.m.
- Last Pull In: 9:30 p.m.

Starting Budgeted Staff

- 41 Bus Operators
- 11 mechanics
- 10 Service Attendants
- 4 Clerks and ERS
- 2 Storekeepers
- 4 Supervisors & Management

Shared Lines

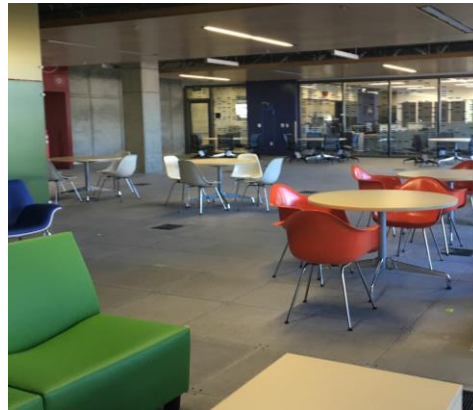
- 2 – Sunset
- 20 – Wilshire
- 30 – Pico
- 33 – Venice
- 66 – Olympic
- 68 – Cesar Chavez
- 745 – Broadway Rapid

Vehicles

- 40' 5600 New Flyers
- 40' 7600 NABI
- 45' 8000 NABI

Moving Forward

Look Ahead



Revenue Operations

- February 1, 2016

Monitor Division and Augment Service

- With the next few bi-annual shake-ups, Operations will optimize service, and reposition vehicles and staff to reach full division capacity

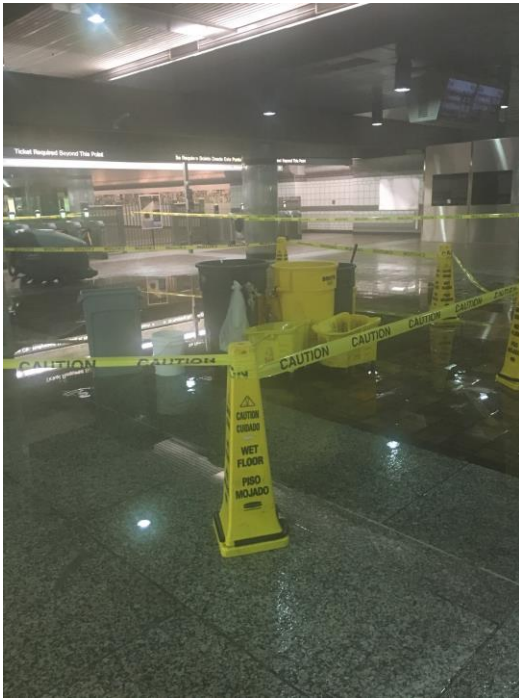
El Niño Preparedness

Division 24 - Communication and Mechanical Room Water Intrusion



El Niño Preparedness

7th / Metro Station
Flooded Figueroa
Mezzanine level



Union Station Box



Mariachi Plaza Station
Entrance by Bailey St.



El Niño Preparedness

Actions Taken

- **Develop Inclement Weather Plan to guide emergency situations**
- **Identify areas and locations prone to inclement weather for effective response recovery**
- **Provide training in emergency priority communication services**
- **Evaluate resources to determine priorities and future needs**
- **Respond to events as needed**
- **Follow up with mitigations as possible**



Metro