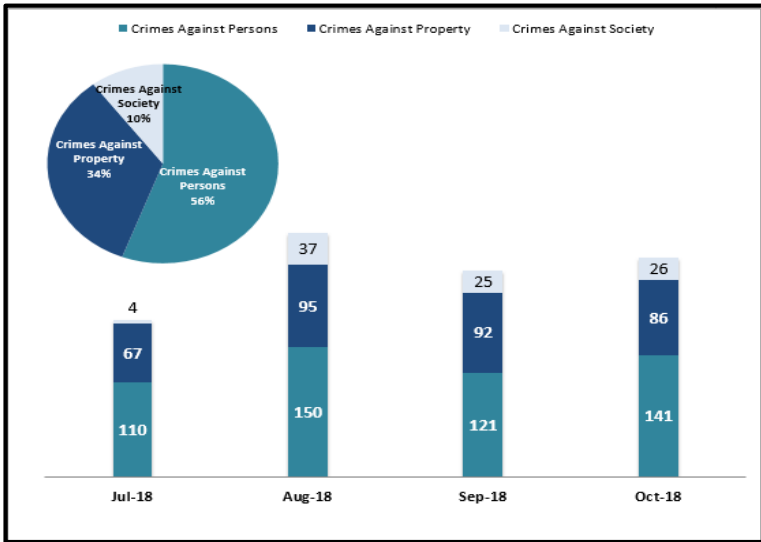


# KEY PERFORMANCE INDICATORS

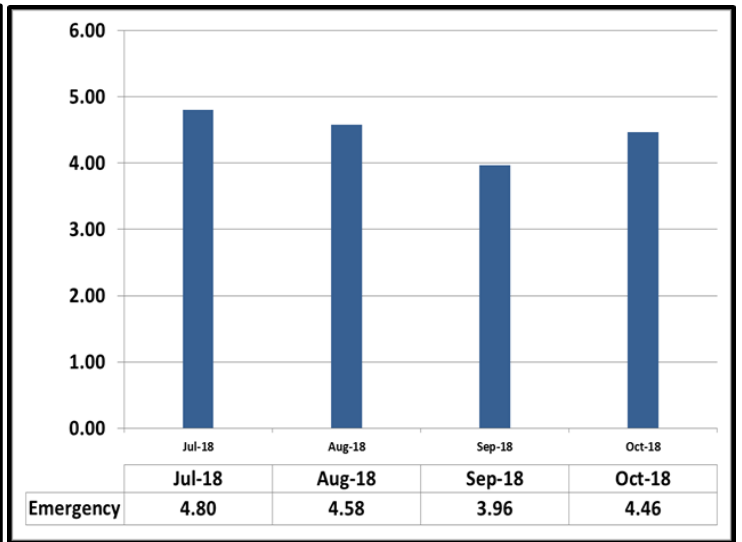
OCTOBER 2018

Attachment C

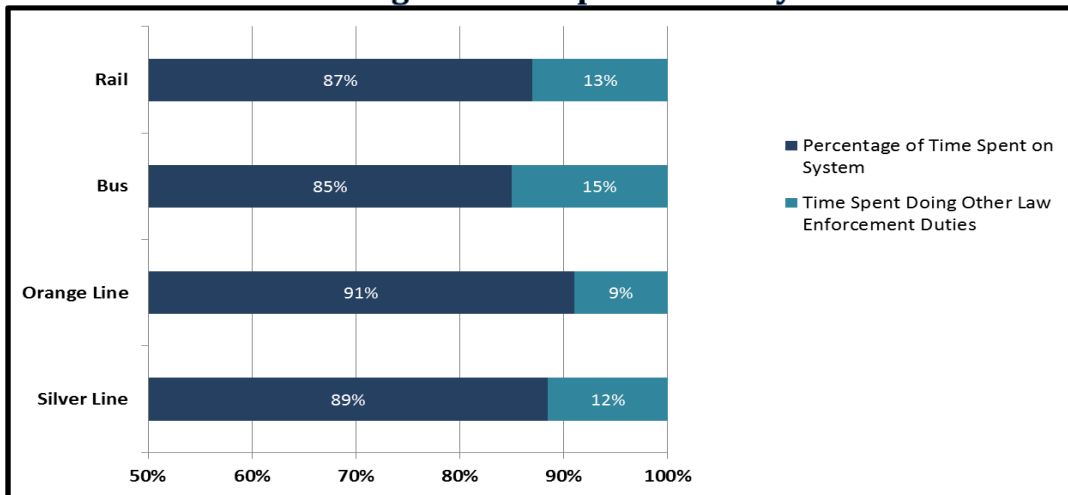
## Crimes Against Persons, Property, and Society



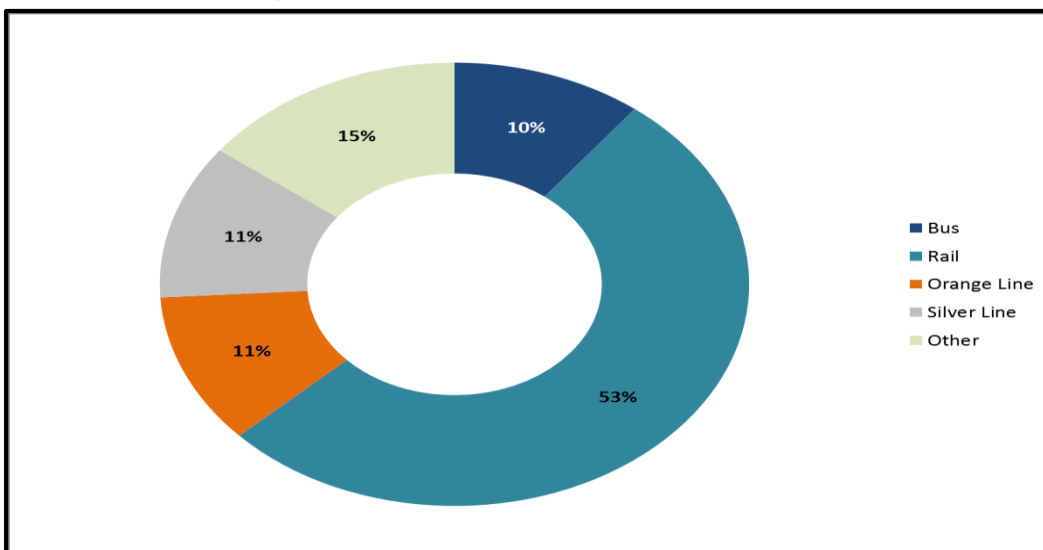
## Average Emergency Response Times



## Percentage of Time Spent on the System



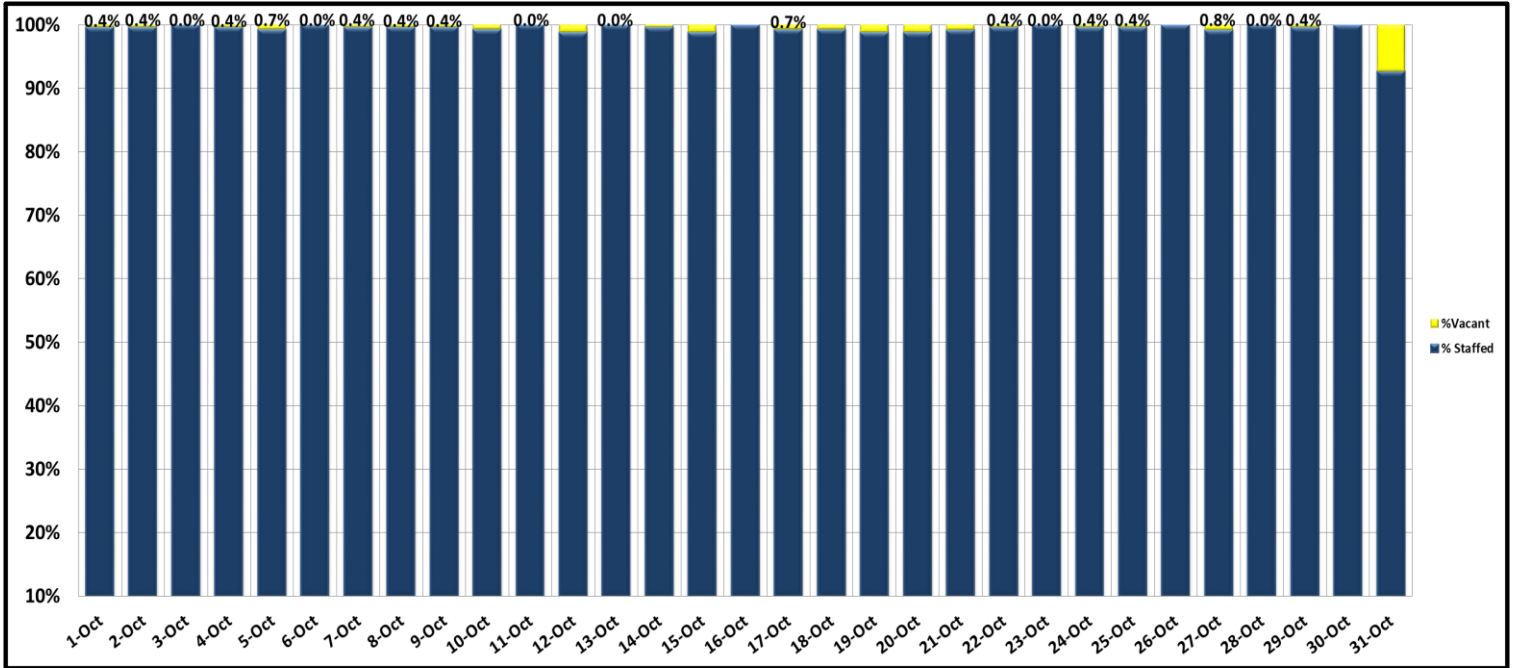
## Percentage of Time Spent on the System as a Whole



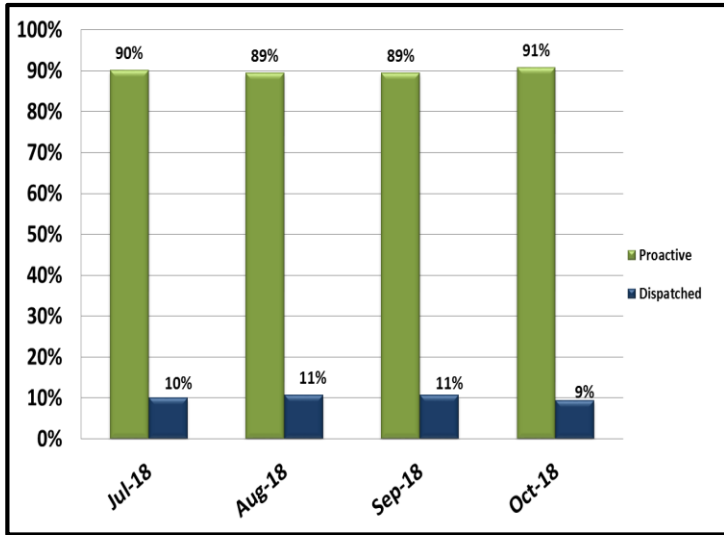
# KEY PERFORMANCE INDICATORS

OCTOBER 2018

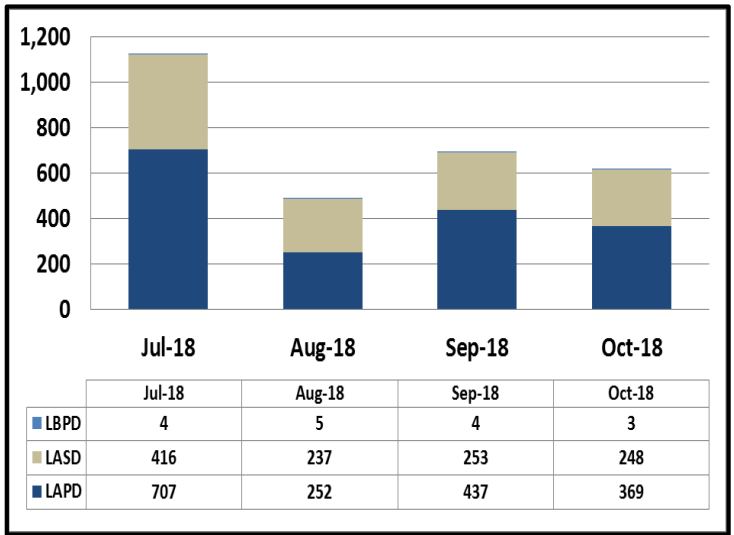
## Ratio of Staffing Levels vs Vacant Assignments



## Ratio of Proactive vs Dispatched Activity



## Grade Crossing Operations



### Grade Crossing Operation Locations October:

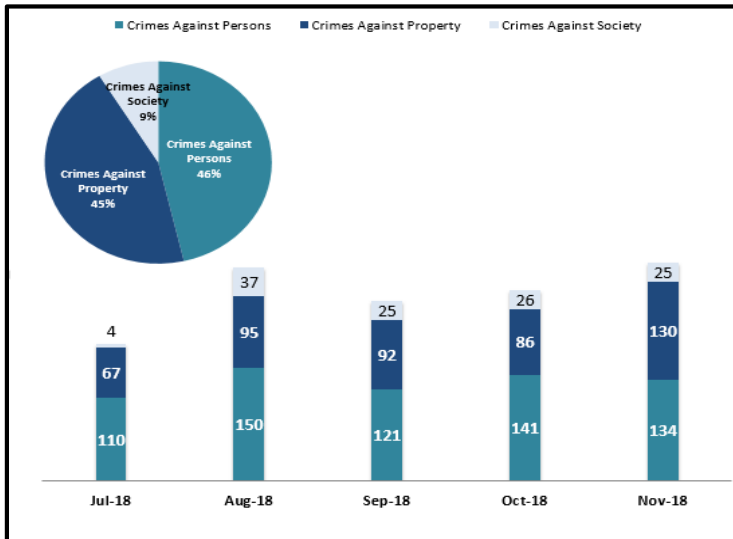
1. Blue Line Stations (160)
2. Expo Line Stations (210)
3. Gold Line Stations (250)

# KEY PERFORMANCE INDICATORS

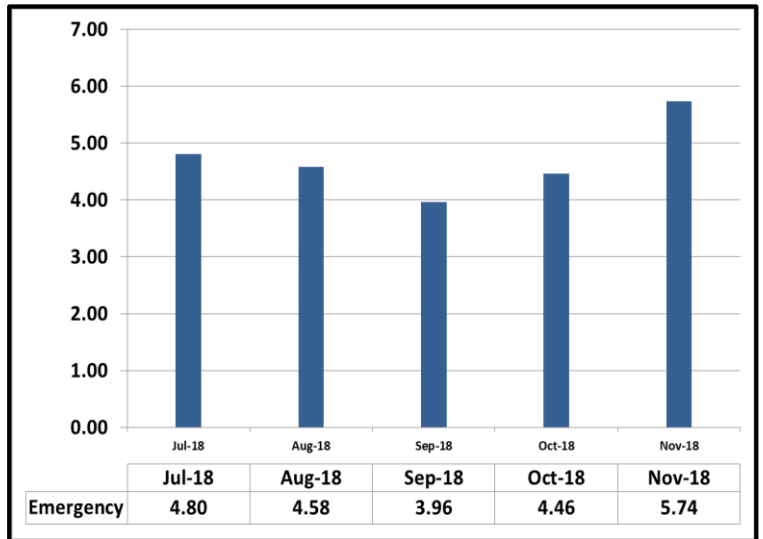
NOVEMBER 2018

Attachment C

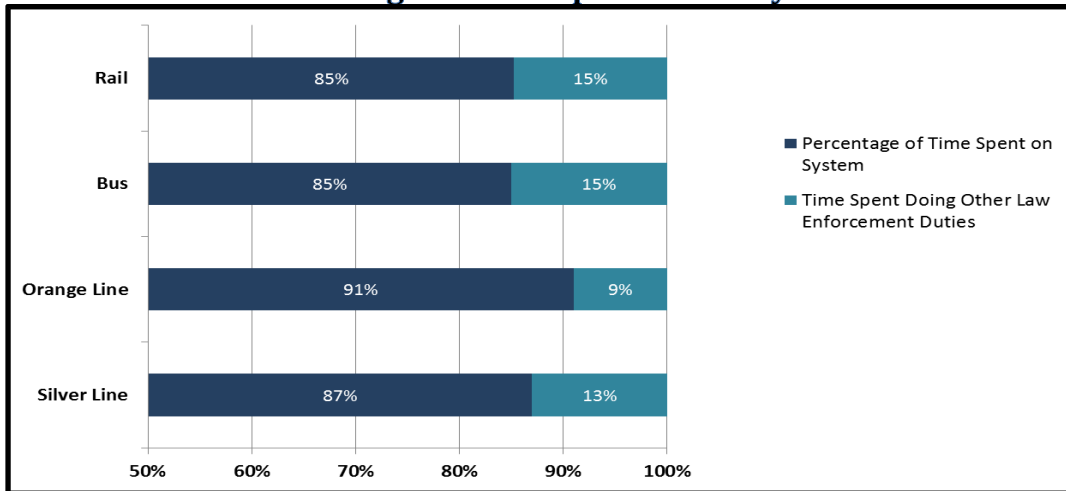
## Crimes Against Persons, Property, and Society



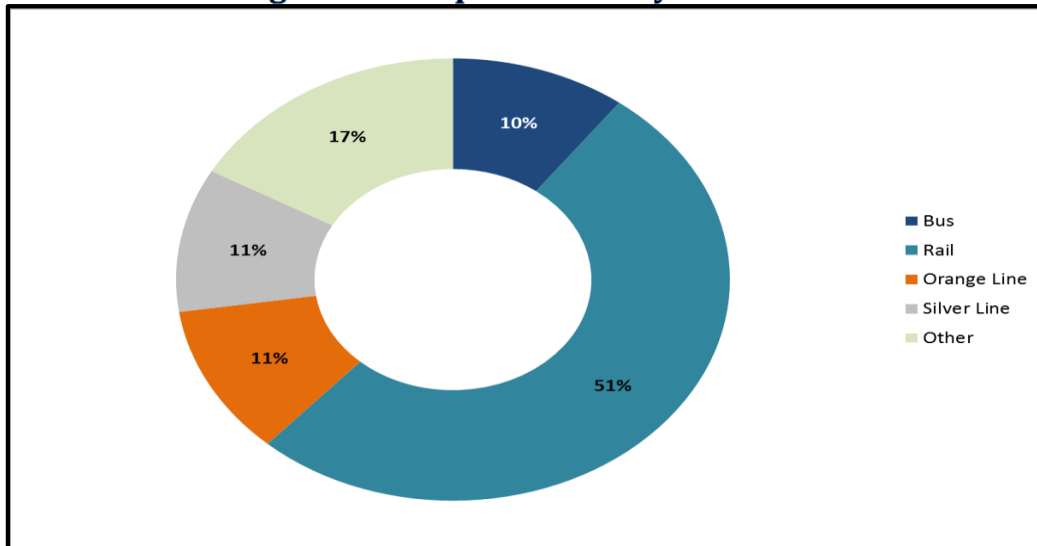
## Average Emergency Response Times



## Percentage of Time Spent on the System



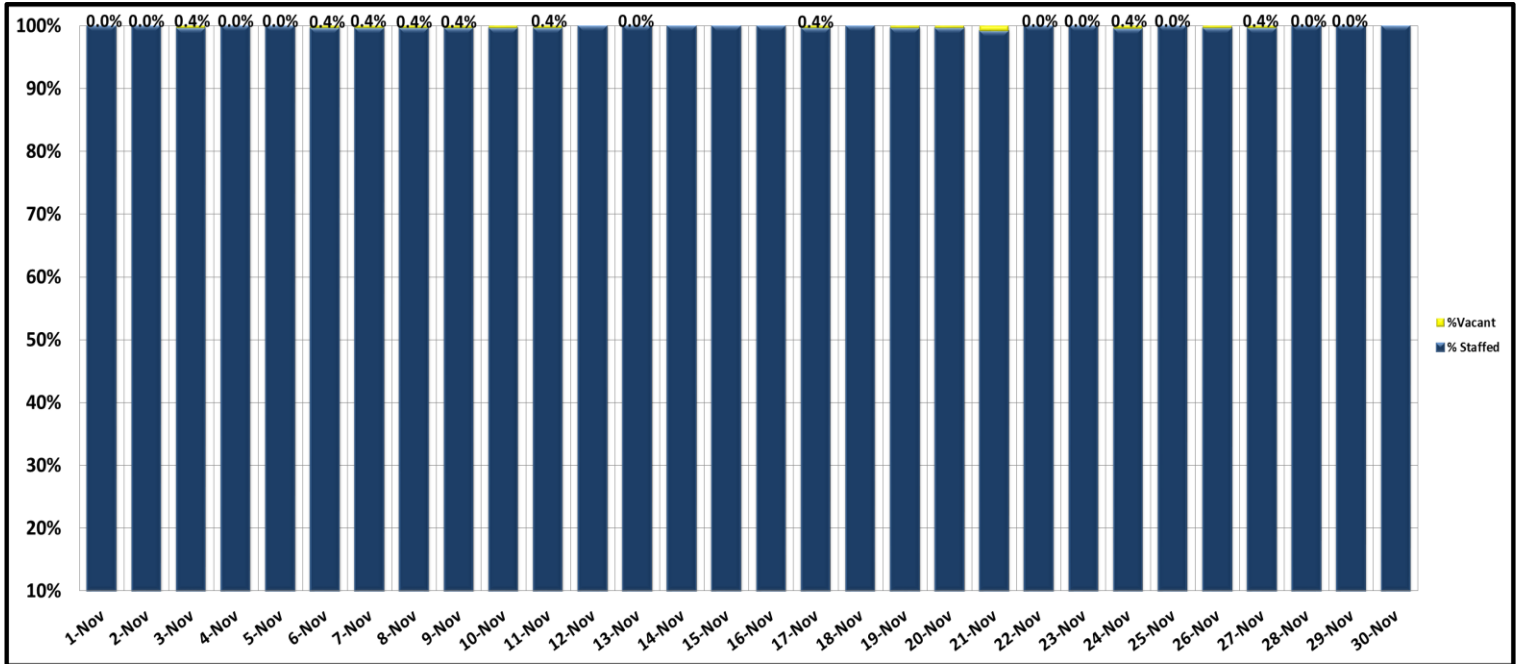
## Percentage of Time Spent on the System as a Whole



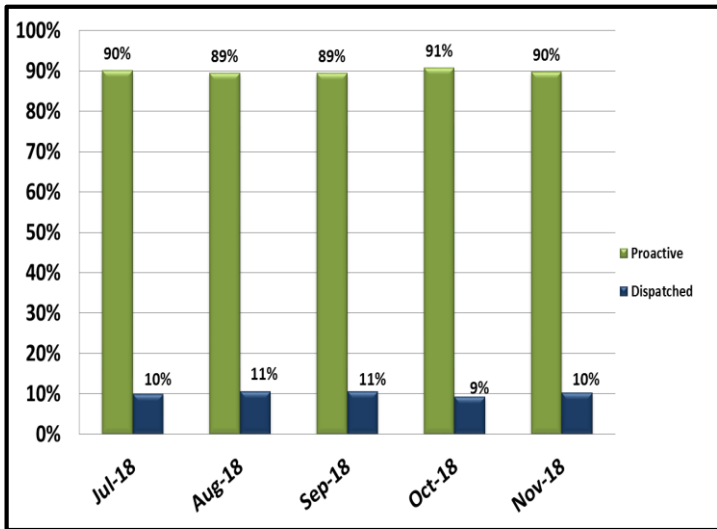
# KEY PERFORMANCE INDICATORS

NOVEMBER 2018

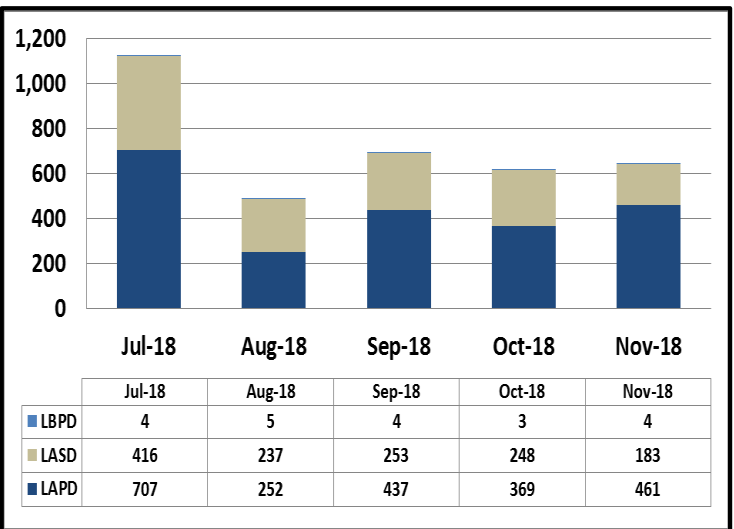
### Ratio of Staffing Levels vs Vacant Assignments



### Ratio of Proactive vs Dispatched Activity



### Grade Crossing Operations



Grade Crossing Operation Locations November:

1. Blue Line Stations (172)
2. Expo Line Stations (295)
3. Gold Line Stations (181)