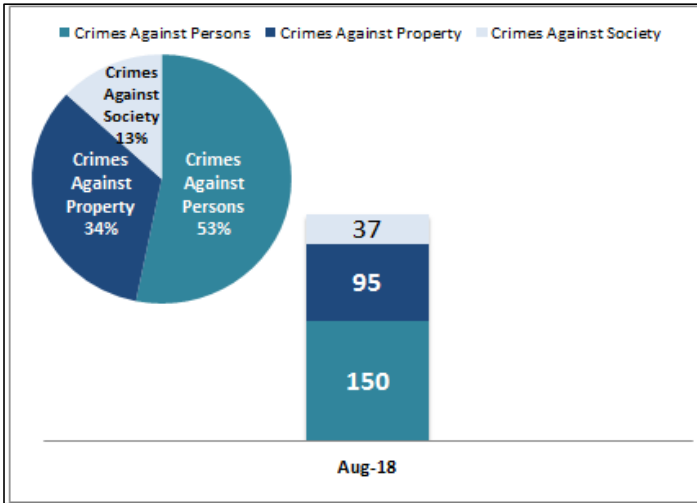


# Key Performance Indicators

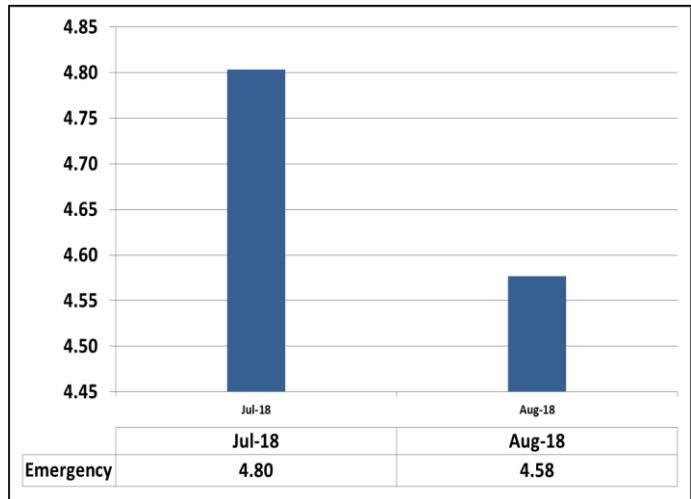
August 2018

Attachment C

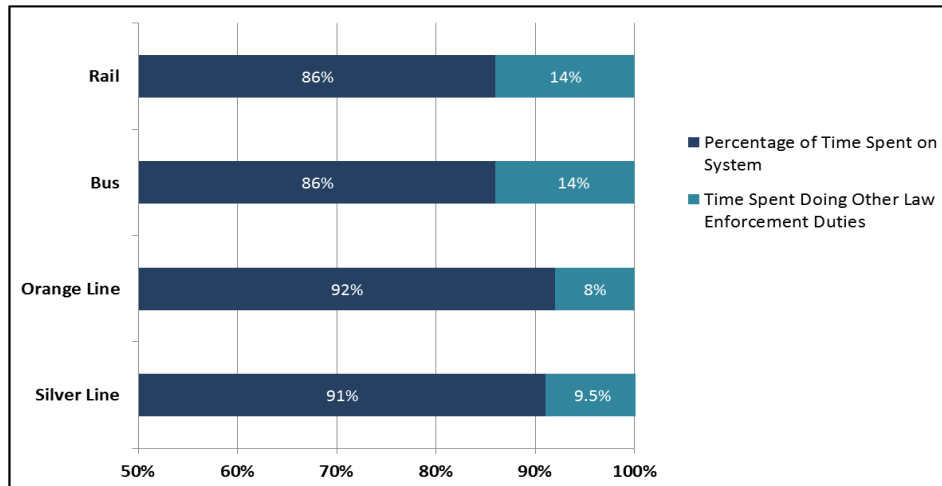
## Crimes Against Persons, Property, and Society



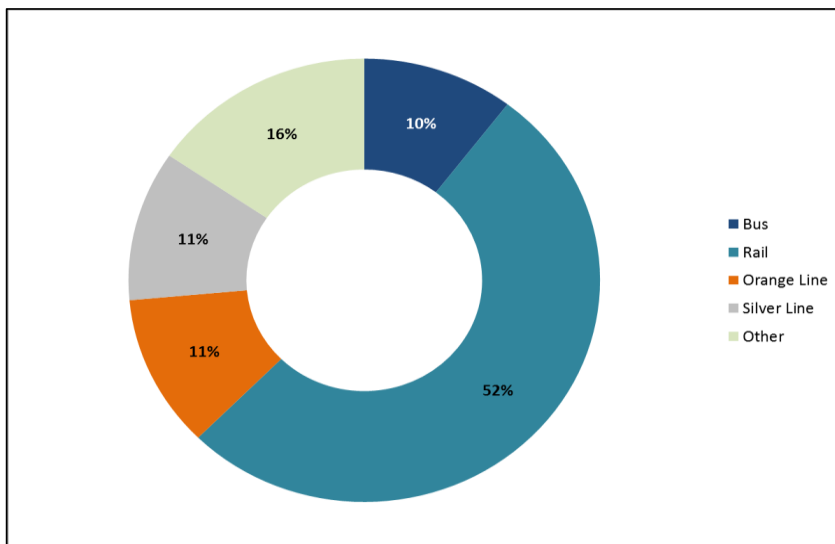
## Average Emergency Response Times



## Percentage of Time Spent on the System



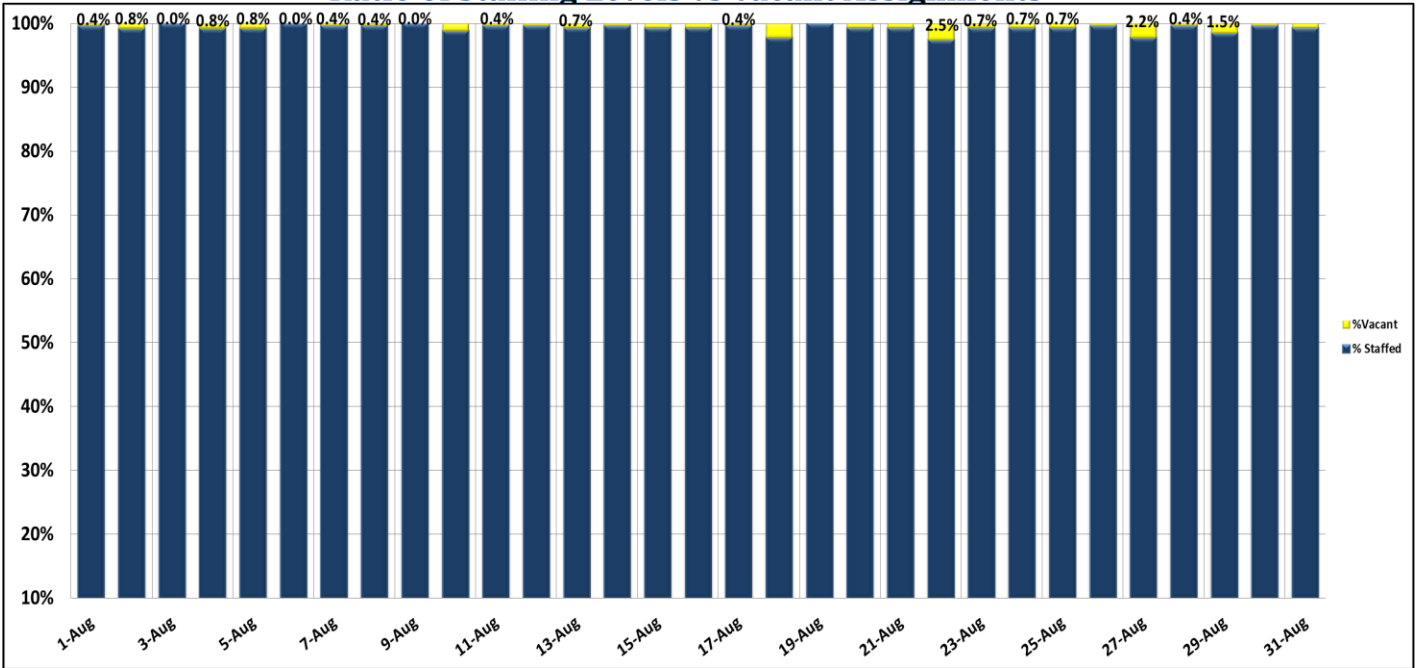
## Percentage of Time Spent on the System as a Whole



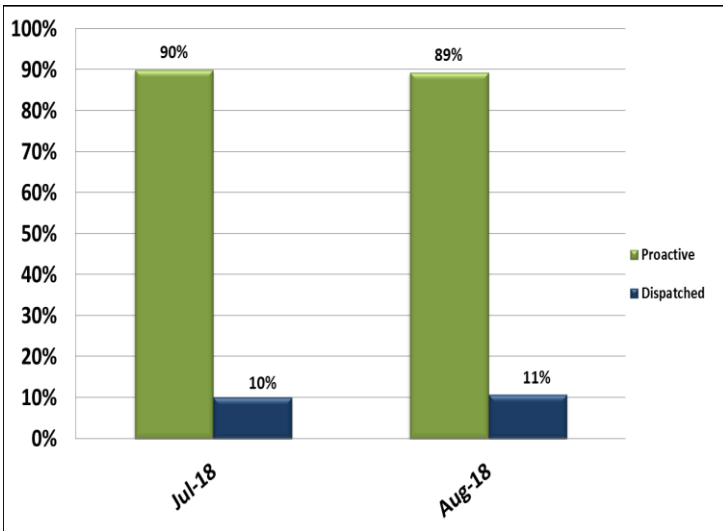
# Key Performance Indicators

August 2018

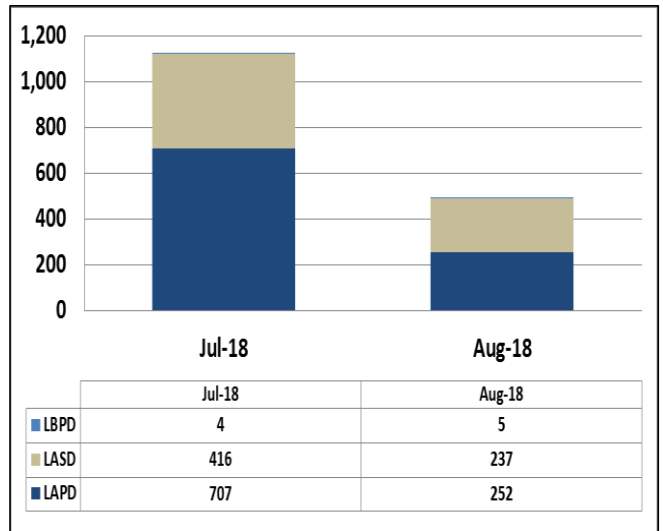
## Ratio of Staffing Levels vs Vacant Assignments



## Ratio of Proactive vs Dispatched Activity



## Grade Crossing Operations



### Grade Crossing Operation Locations August:

1. Blue Line Stations (141)
2. Expo Line Stations (135)
3. Gold Line Stations (218)