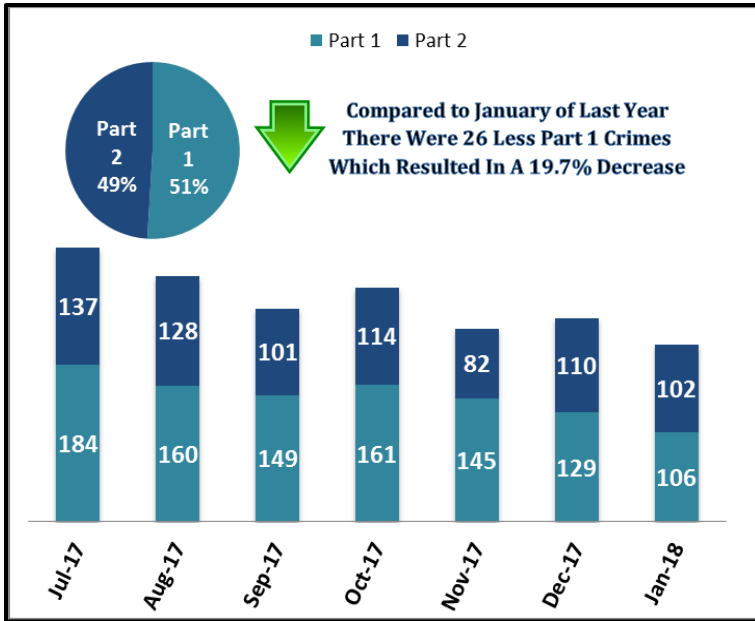


SYSTEM-WIDE LAW ENFORCEMENT OVERVIEW

JANUARY 2018

Attachment A

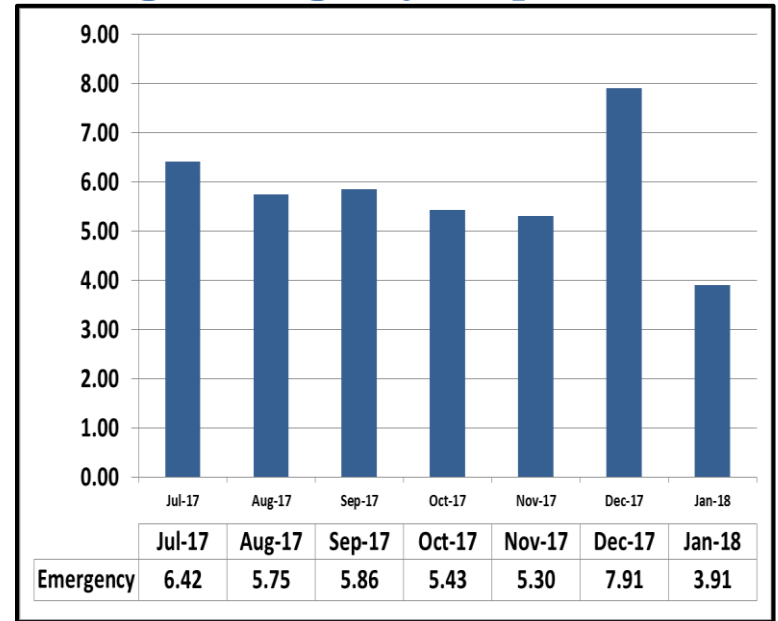
Part 1 & Part 2 Crimes



For the month of January 2018, Part 1 crime activity is down by 19.7% system-wide compared to the same period last year. In a monthly contrast, there were 23 less Part 1 crimes in January than in December, resulting in a 17.8% decrease.

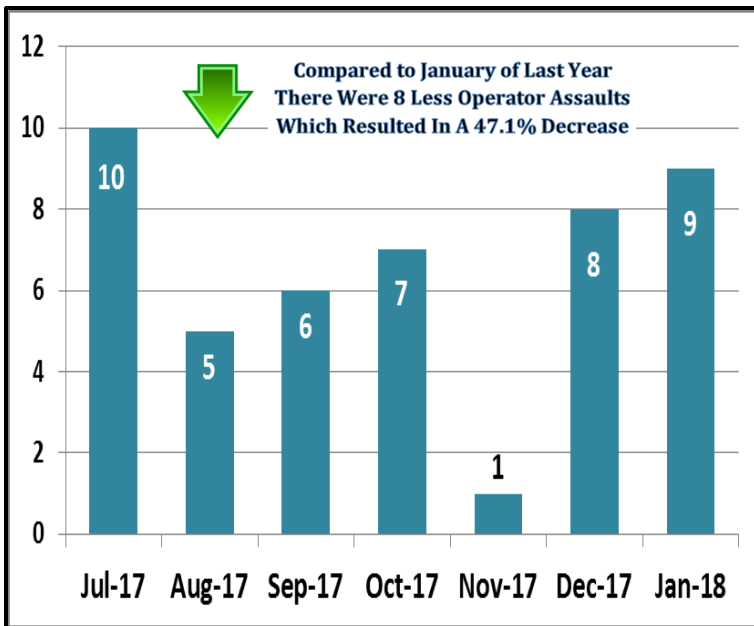
Part 2 crime activity is down 22.1% system-wide compared to the same period last year. In a monthly contrast, there were 8 less Part 2 crimes in January than in December, resulting in a 7.3% decrease.

Average Emergency Response Times



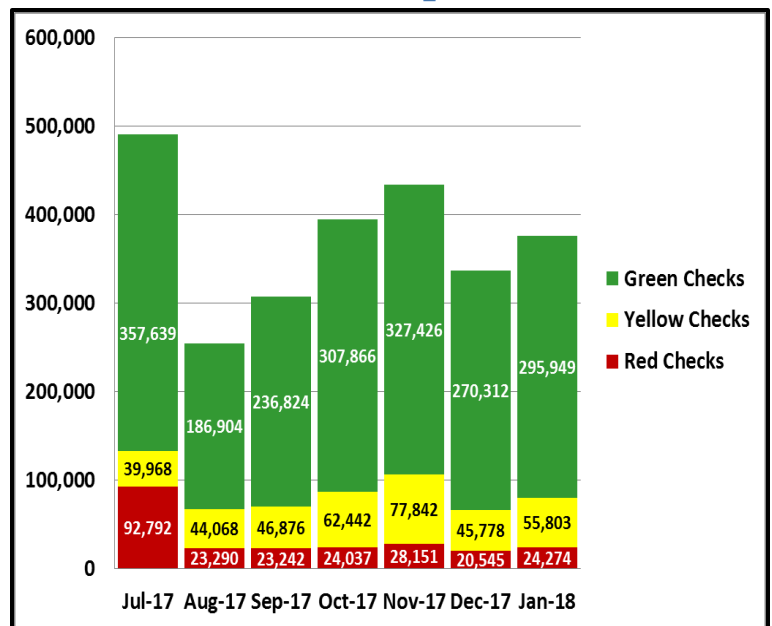
Average emergency response times were 3.91 mins.

Bus Operator Assaults



There were a total of 9 Bus Operator Assaults. Comparing the Bus Operator Assaults from the same period last year, there were 17 Operator Assaults last year resulting in a 47.1% decrease.

Fare Compliance



Green Checks- Occurs when a patron has valid fare

Yellow Checks- Occurs when a patron has valid fare, but did not tap at transfer station

Red Checks- Occurs when a patron has invalid fare