

Measure M Independent Taxpayer Oversight Committee

Transit Projects Update

Allison Yoh, Executive Officer
March 1, 2023

Measure M Transit Projects



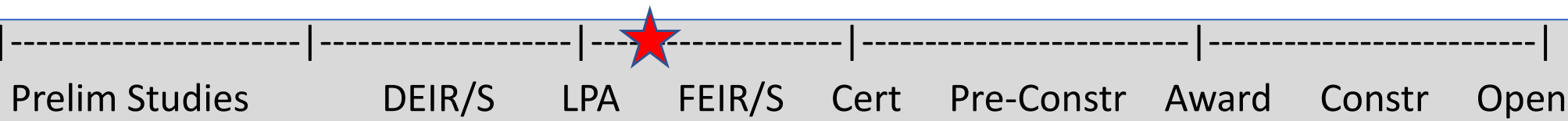
> Major Pillar Projects

- A) West Santa Ana Branch
- B) Eastside Transit Corridor Phase 2
- C) Sepulveda Transit Corridor
- D) C (Green) Line Extension to Torrance

> Other Projects in Planning and Development

- North Hollywood to Pasadena
- N. San Fernando Valley BRT
- Vermont Transit Corridor

West Santa Ana Branch Transit Corridor



Current Phase	Most Recent Cost Estimate
EIR/EIS	\$7.1B (YOES) - IOS

Recent Activities

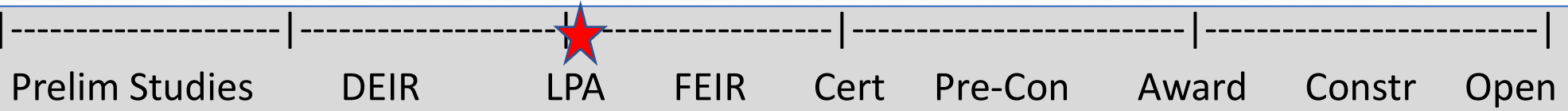
- Continuing to address design updates to reach 90% project definition for Final EIS/EIR
- Coordination with cities/stakeholders/3rd parties
- Reached concurrence with UPRR/Ports for continuation of project design without aerial alignment in San Pedro Subdivision
- Developing Encroachment Permit applications for utility potholing and geotechnical drillings

Next Actions

- March 2023: 15% design completion, public outreach
- April 2023 (anticipated): MOU with Ports/UPRR



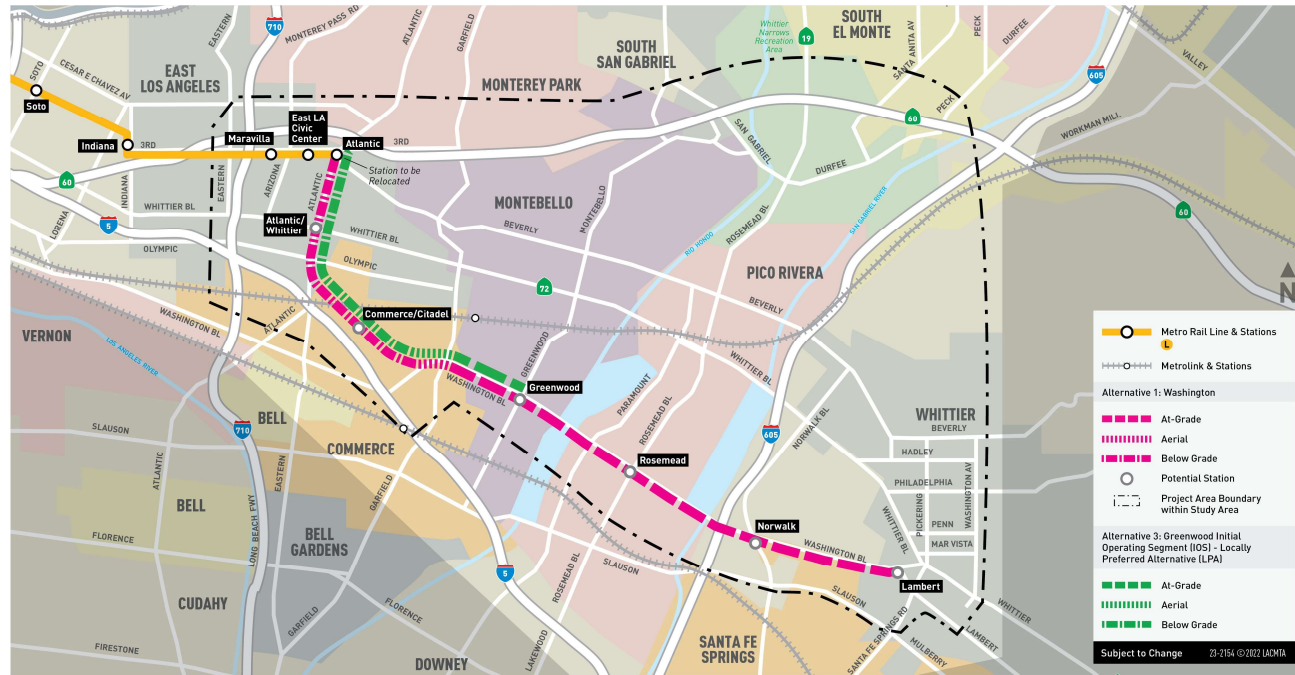
Eastside Transit Corridor Phase 2



Current Phase	Most Recent Cost Estimate
EIR/EIS	\$7.9B (YOES) – IOS

Recent Activities

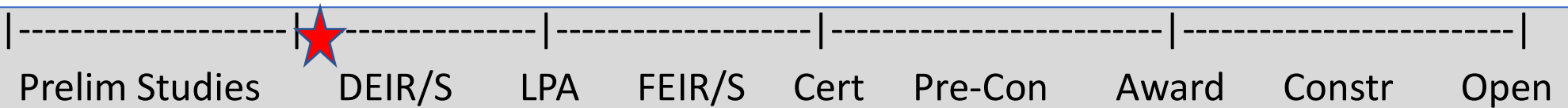
- Board selected LPA as Pomona/Atlantic Station to Greenwood (Dec 2022)
- Authorization to begin Final EIR for full alignment (Dec 2022)
- Reinitiate NEPA (Dec 2022)
- Executed contract modification for environmental services and advanced engineering



Next Actions

- Prepare Final EIR and reinitiate NEPA (early 2023) in coordination with FTA
- Request approval from FTA for entry into Project Development before CalSTA's April announcement of AB 180 TIRCP awards

Sepulveda Transit Corridor



Current Phase

EIR/EIS

Most Recent Cost Estimate

\$5.7B (2015\$)

Recent Activities

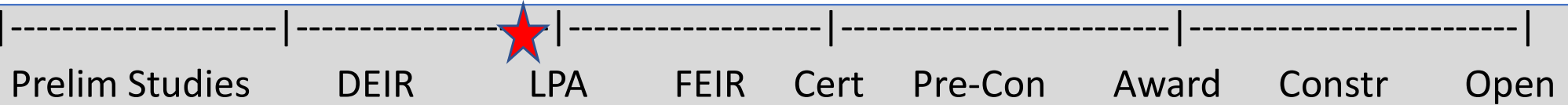
- Ongoing coordination between alternative designs and environmental analysis
- Continued engagement with other projects and with third party agencies
- Conducted public opinion survey to support outreach efforts (July-August 2022)
- Open House meetings in Van Nuys, Westwood, and online (January 2023)

Next Actions

- Continue to develop designs and prepare environmental technical studies



C (Green) Line Extension to Torrance



Current Phase	Most Recent Cost Estimate
EIR/EIS	\$891M (2015\$)

Recent Activities

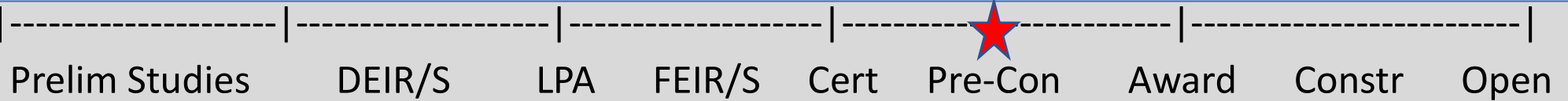
- Prepared summaries of community input, cost, schedule, ridership
- Continued coordination with community groups, cities, BNSF, Caltrans, utilities, and property owners
- Draft EIR released January 26, 2023

Next Actions

- Public hearings: February 2023
- Public comment through March 27, 2023
- Board selection of Locally Preferred Alternative (LPA): Spring 2023



North Hollywood to Pasadena BRT



Current Phase	Most Recent Cost Estimate
Pre-Construction	\$263M - \$386M (YOES) – Capital

Recent Activities

- Preliminary engineering underway
- Meeting with each city on corridor to discuss project design
- Advancing project design (e.g., bus lanes, stations, transit signal priority, etc.)



Next Actions

- Early 2023 – Release RFP for final project design (Program Management)
- Mid 2023 – Procure technical services to develop a First/Last Mile Plan

North San Fernando Valley BRT Improvements



Current Phase	Most Recent Cost Estimate
Pre-Construction	\$180M (2015\$)

Recent Activities

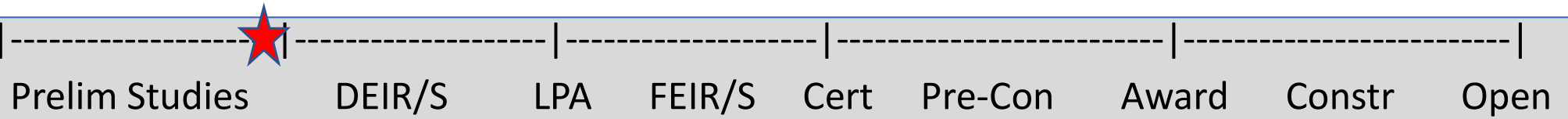
- Board actions (December 2022):
 - Approval of recommended BRT network improvements
 - Authorization to file a Notice of Exemption (NOE)
- Continuing to engage key stakeholders
- NOE filed with LA County Clerk

Next Actions

- Jan 2023: Initiate design of peak period bus only lanes on Roscoe Blvd.
- Cooperative effort with Metro Service Planning and LA City on BRT network improvements
- Continue key stakeholder engagement



Vermont Transit Corridor



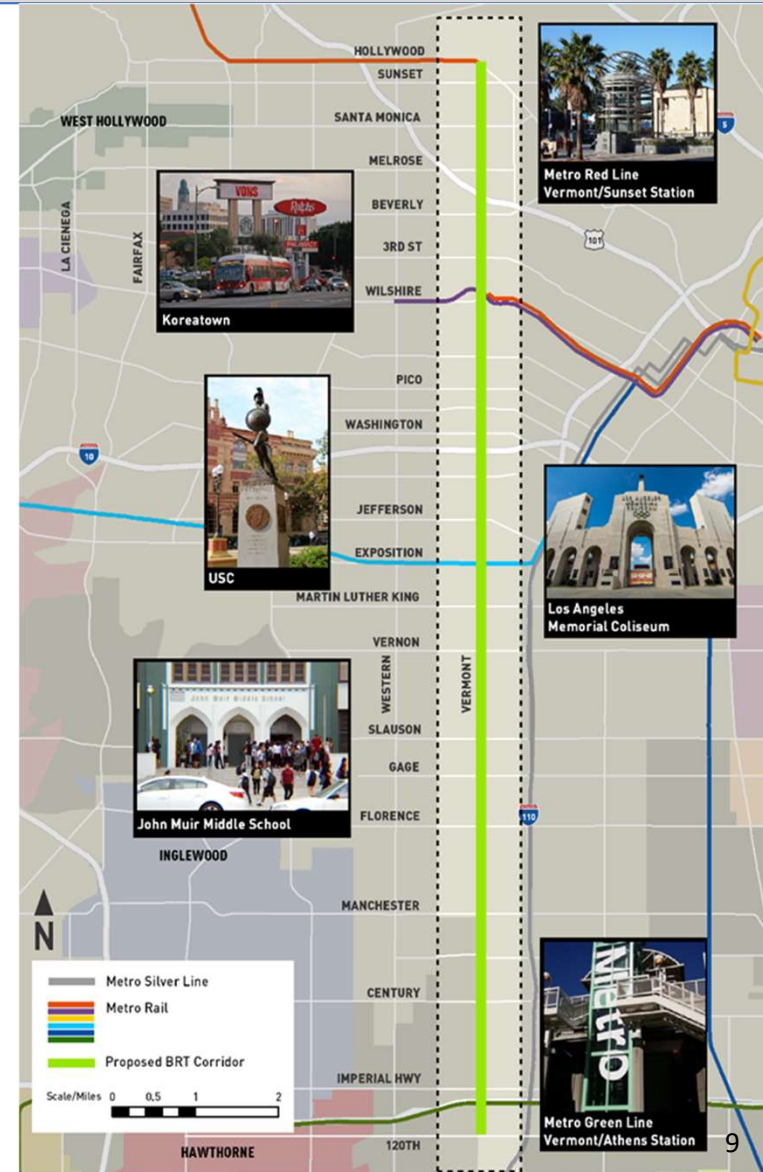
Current Phase	Most Recent Cost Estimate
Preliminary Studies	\$425M (2015\$)

Recent Activities

- Sep 2022: Metro Board adoption of a strategy for immediate-, mid- and long-term improvements
- Continued community/stakeholder engagement (local school principals, CicLAvia, etc.)
- Preparing for release of environmental services RFP and community outreach RFP


Next Actions

- Issue RFP for planning & environmental studies (early 2023)
- Issue RFP for communications and outreach services (anticipated February/March 2023)



Measure M Expenditure Plan Groundbreaking to Opening Dates

Measure M
Opening Dates
3-Year Window

2020	2021	2022	2023	2024	2025	2026	2027	2028	2029	2030	2031	2032	2033	2034	2035	2036	2037	2038	2039	2040	2041	2042	2043	2044	2045	2046	2047	2048	2049							
NoHo to Pasadena																																				
North SFV BRT																																				
Planning		LA River Path																																		
Planning		West Santa Ana Branch (Phase 1)								WSAB (Phase 1+Slauson) Approved by Board																										
Planning		Vermont Corridor																																		
Planning		Green Line Extension to Torrance																																		
Planning		Sepulveda Transit Corridor (Phase 1)																																		
Planning				Eastside Transit Corridor Phase 2																																
Planning				West Santa Ana Branch (Phase 2) - Slauson to LAUS																																
Planning				Crenshaw North																																
Sepulveda Transit Corridor (Phase 2) 																																				

FY 2022 - 2024

FY 2023 - 2025

FY 2025 - 2027

FY 2028 - 2030

FY 2028 - 2030

FY 2030 - 2032

FY 2033 - 2035

FY 2035 - 2037

FY 2041 - 2043

FY 2047 - 2049

FY 2057 - 2059