



NEXTGEN Bus Plan

Speed & Reliability
Program Update

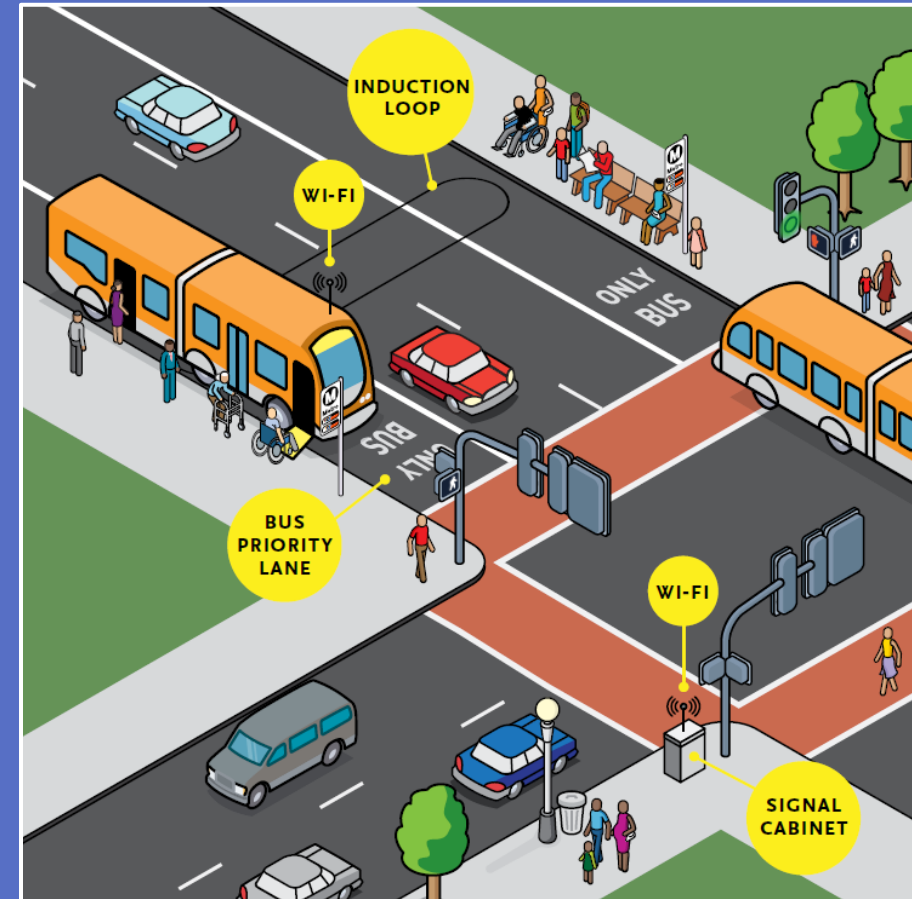


Metro®

APRIL 2023

Speed & Reliability (S&R) Background

- NextGen Bus Plan improves transit competitiveness through faster, more frequent and more reliable bus service
- Pursuant to Motions 38.1 (July 2018) and 22.1 (July 2019), a Bus Speed & Reliability tactical transit infrastructure program was established to accelerate collaborative solutions for bus delays
 - 100+ Miles of Bus Priority Lanes
 - 1,600+ Intersections with Transit Signal Priority
 - All Door Boarding to Reduce Dwell Times
 - Tactical Treatments & Studies (Bus & Rail)
 - Bus Stop & Layover Improvements
- Force multiplier that improves customer experience (CX) and operator conditions, with operational savings reinvested into better service



Bus Lane Map

Bus Priority Lane Corridors



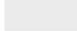

- ✓ Flower St
- ✓ Aliso St
- ✓ 5th St
- ✓ 6th St
- ✓ Alvarado St
- ✓ Grand Av
- ✓ Olive St
-  La Brea Av
-  Florence Av
-  Venice BI
-  Sepulveda BI

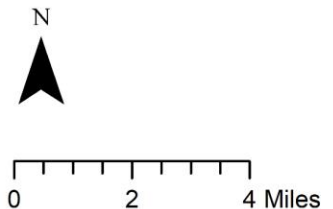
Over
30 Miles Of
Bus Priority Lanes
Completed

60+ New Miles
In-Progress



Bus Lane Projects
DRAFT, 11/14/2022

- Bus Lanes**
-  Completed Corridors
 -  In-Progress Corridors
- City Boundaries**
-  Los Angeles
 -  Other cities/LA County



Bus Priority Lanes Update

Alvarado St (Line 2)

Surveyed over 200 bus riders after project completion

- 8 in 10 riders agreed bus lanes have made their trip faster and more reliable
- 9 in 10 riders reported cars routinely blocking bus lanes
- Based on this feedback, Metro is partnering with LADOT to conduct targeted parking enforcement along this corridor

La Brea Av (Line 212)

- **Phase 1** (La Brea/Sunset to La Brea/Olympic) working with City of LA and WeHo to secure construction permits to begin implementation; will provide a community update pending approval from both cities

Venice Bl (Line 33): Construction is underway but has experienced significant weather delays, anticipated completion in Spring 2023

Sepulveda Bl (Line 234) in SFV

Conducted bus rider survey in Fall 2022

- 6 in 10 riders experience bus delays attributed to traffic congestion
- Nearly 9 in 10 riders would use the bus more if bus reliability improved

Partnering with LADOT and StreetsLA

- Street paving this spring // Bus Lanes this summer

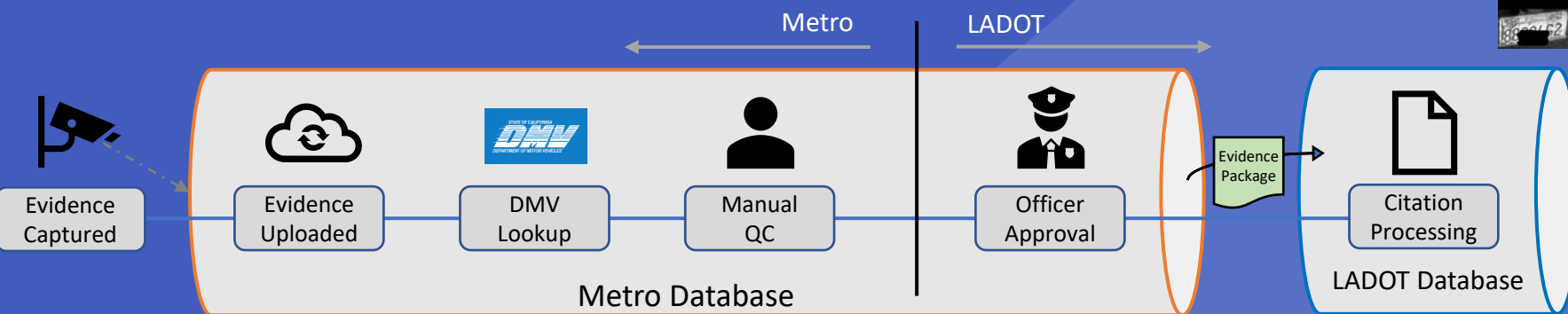
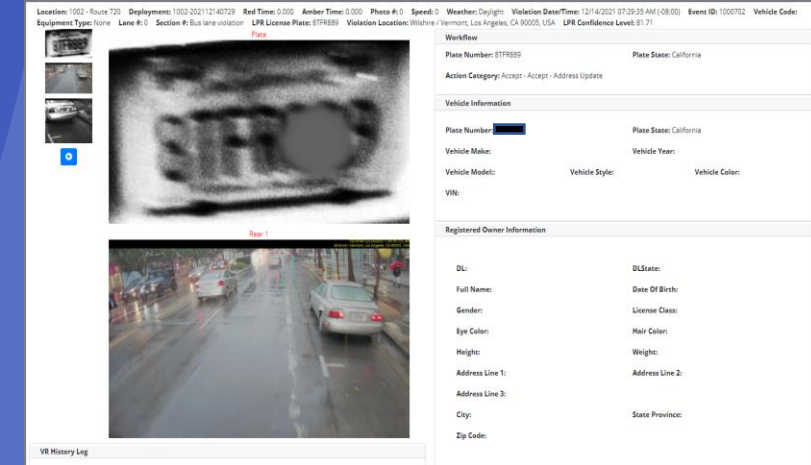
Florence Av (Line 111)

- Metro heard widespread concerns about pavement quality; partnering with StreetsLA to first coordinate street repaving in key segments, then complete bus lane design and implementation



Camera Bus Lane Enforcement (CBLE)

- With AB 917 adoption, plan to implement forward-facing cameras angled to obtain evidence of parking violations through 2026
- Equitable program to improve bus rider experience and reduce in-person confrontations between enforcement officers and violators
- Issued Request for Proposals (RFP); staff would return to Board with recommendation for contract award in Summer 2023
- Metro to submit evidence packages to local jurisdiction (LADOT), which would process citations



Transit Signal Priority & All Door Boarding

- Metro A Line (Blue): Copper theft of LADOT's traffic signal system had disrupted rail service; team worked closely with LADOT on quick fixes to reduce red light delay by over 20% and improve travel time by 15%
- LADOT Cloud-Based Transit Signal Priority (TSP): Project Kickoff
 - New system will upgrade over 1,600 intersections with a modern, real-time system that will reduce red light delay for NextGen Tier 1 bus lines throughout City of LA
- All Door Boarding (ADB): In-Progress
 - Communications support equipment 50% completed
 - ADB expansion will be piloted on two different bus lines in Fall 2023, with further details to follow

