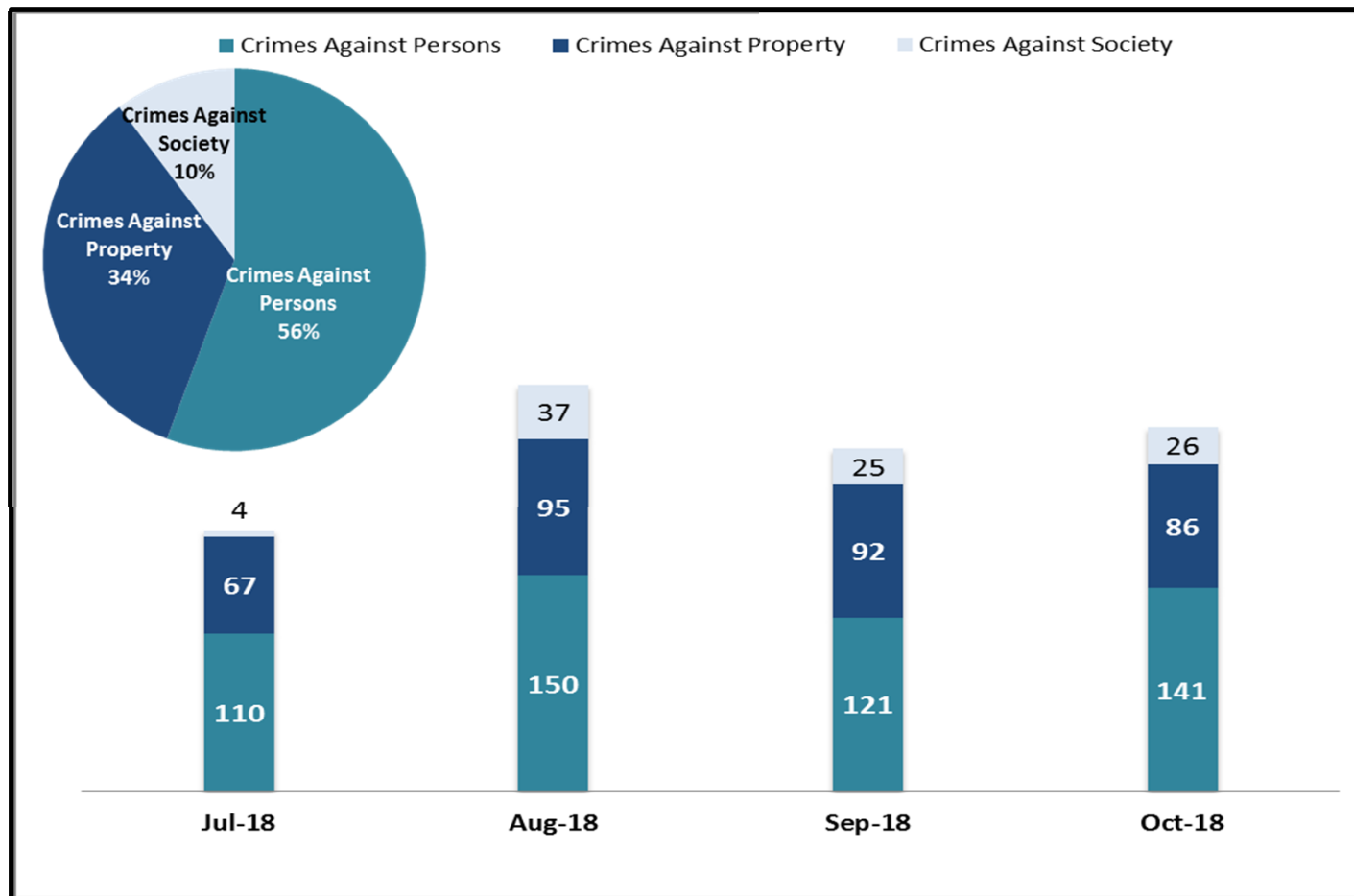


October & November 2018 Transit Policing Performance Summary

**January 10, 2019
Board Staff Briefing**

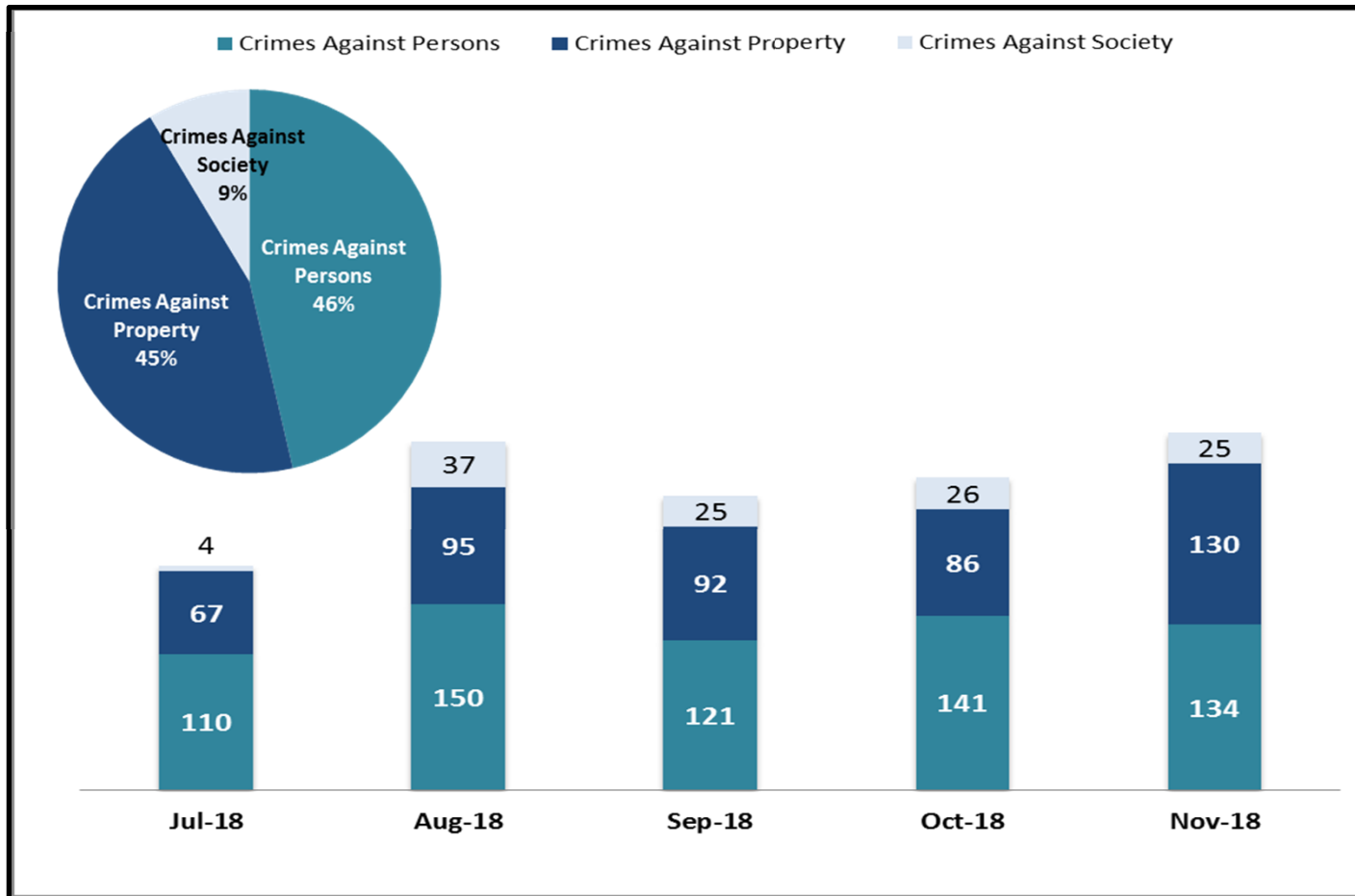
Key Performance Indicators

Crimes Against Persons, Property, and Society – October 2018



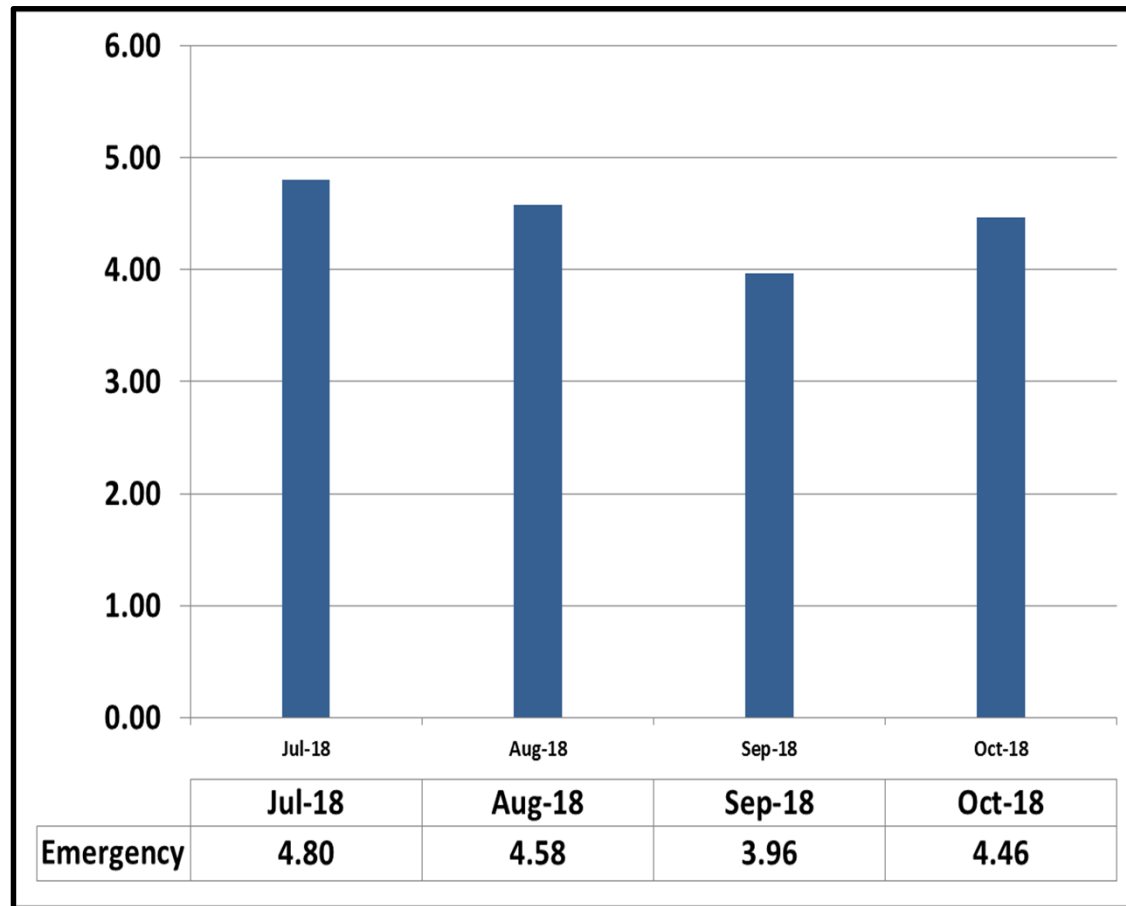
Key Performance Indicators

Crimes Against Persons, Property, and Society – November 2018



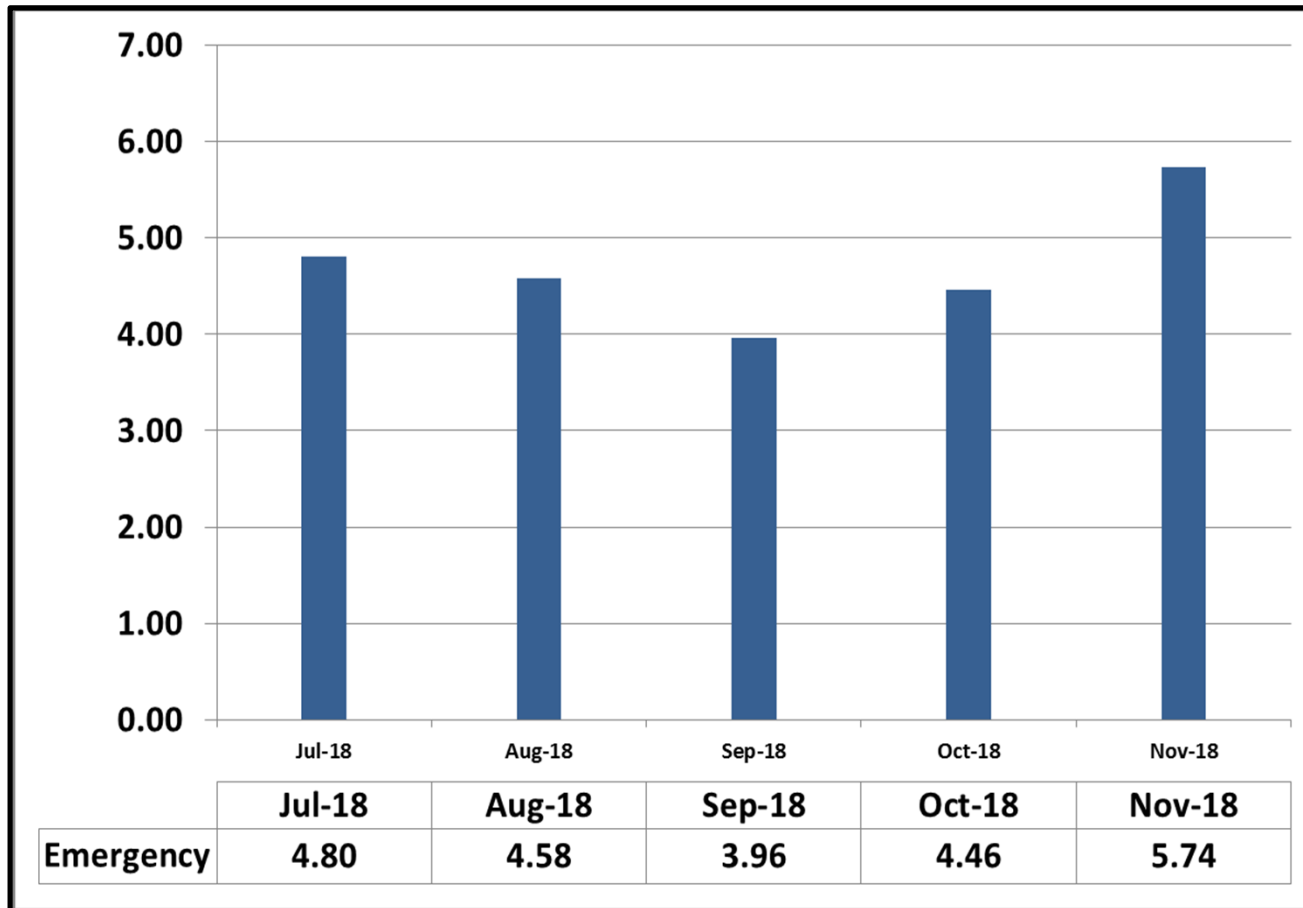
Key Performance Indicators

Average Emergency Response Times – October 2018



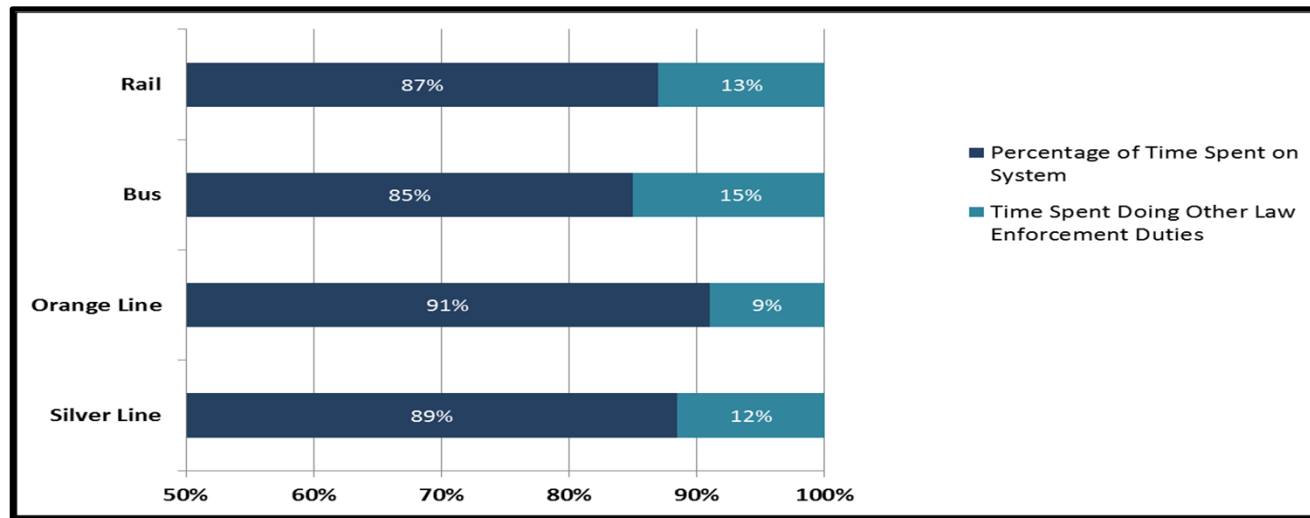
Key Performance Indicators

Average Emergency Response Times – November 2018

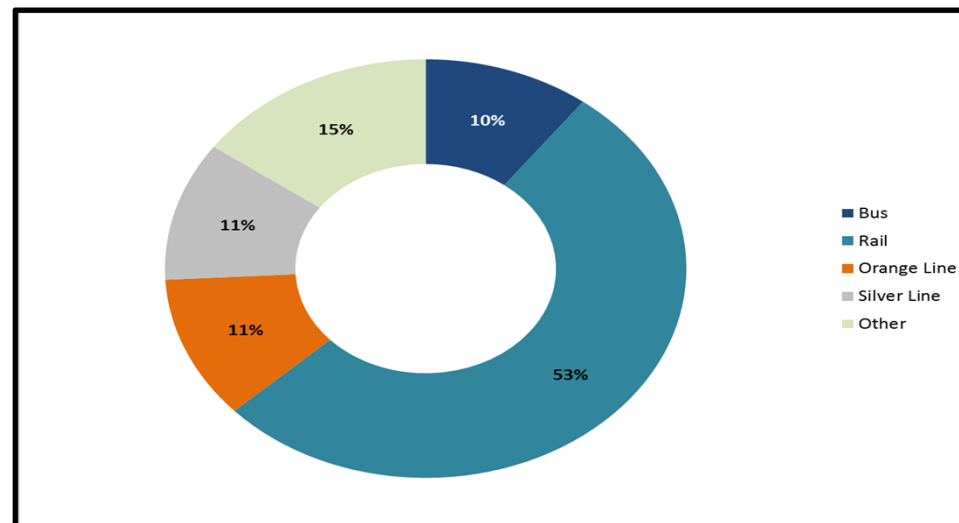


Key Performance Indicators

Percentage of Time Spent on the System - October 2018

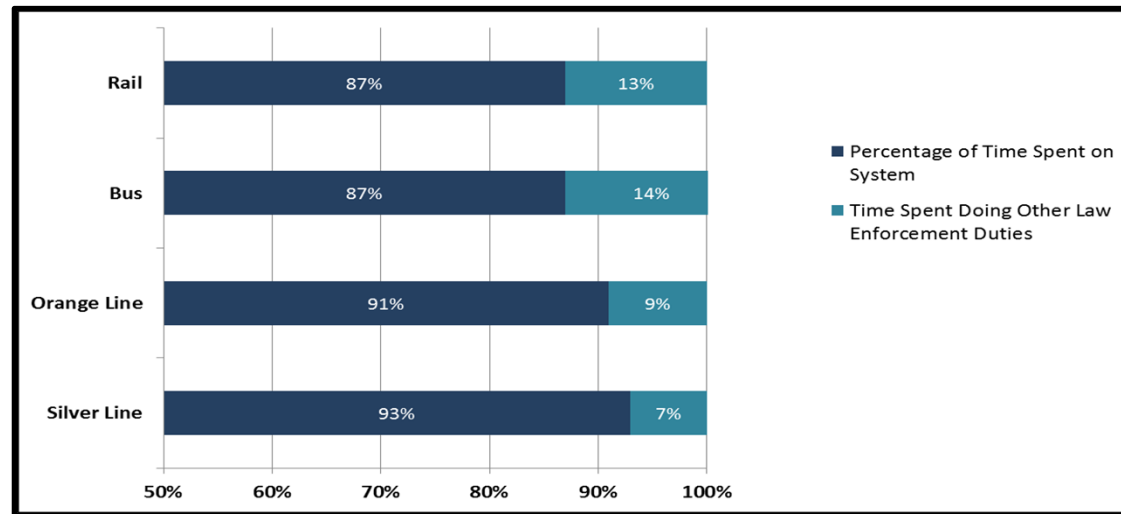


Percentage of Time Spent on the System as a Whole - October 2018

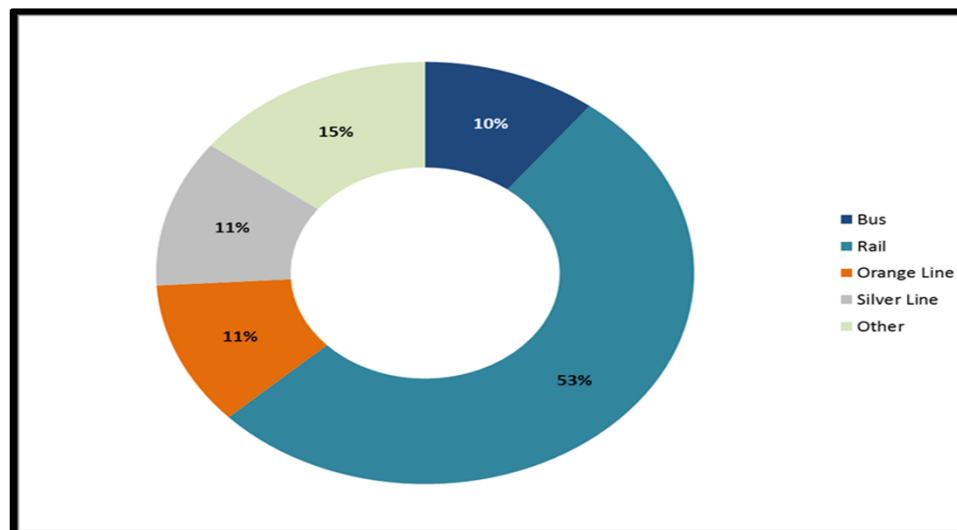


Key Performance Indicators

Percentage of Time Spent on the System – November 2018

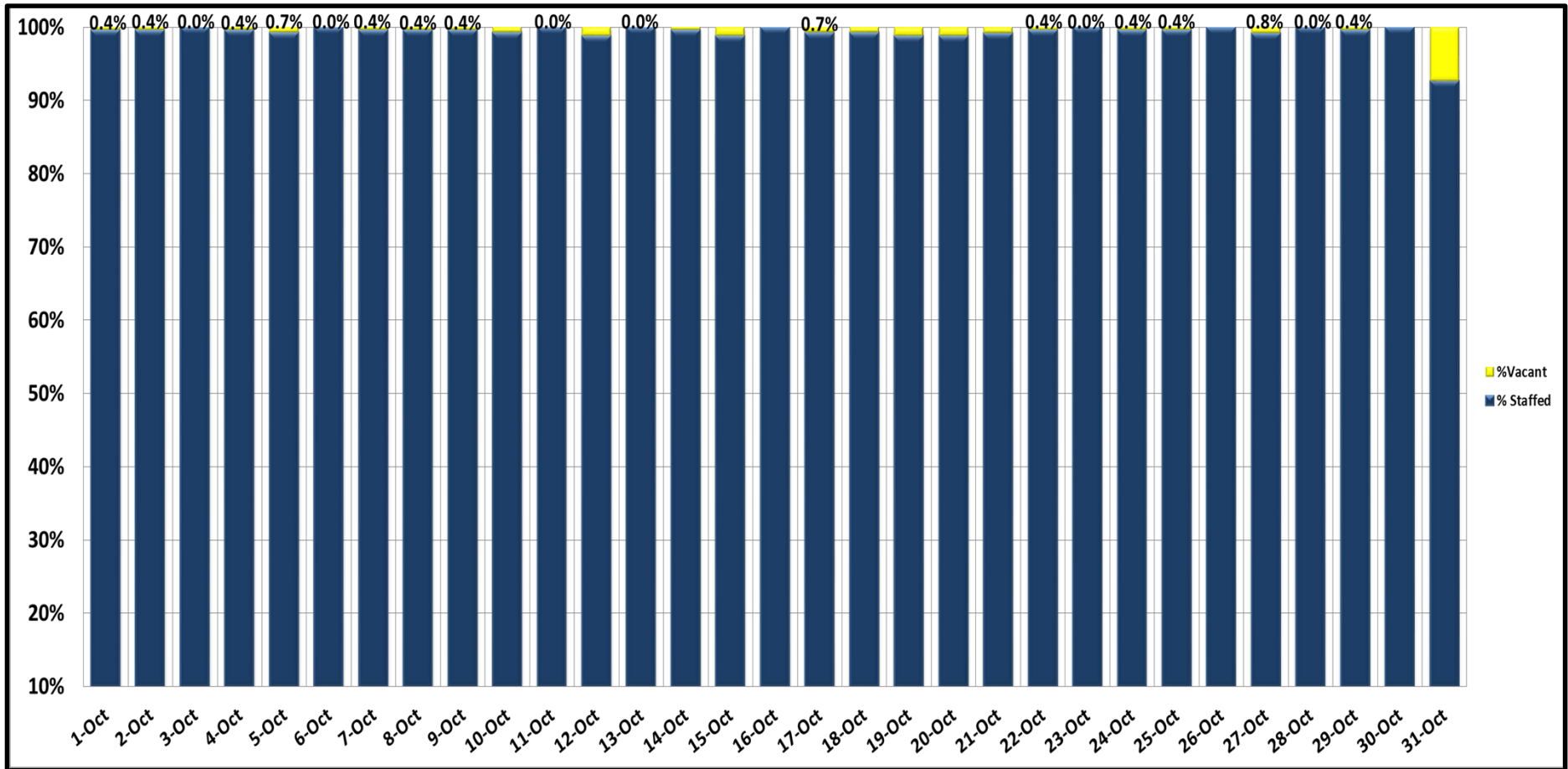


Percentage of Time Spent on the System as a Whole – November 2018



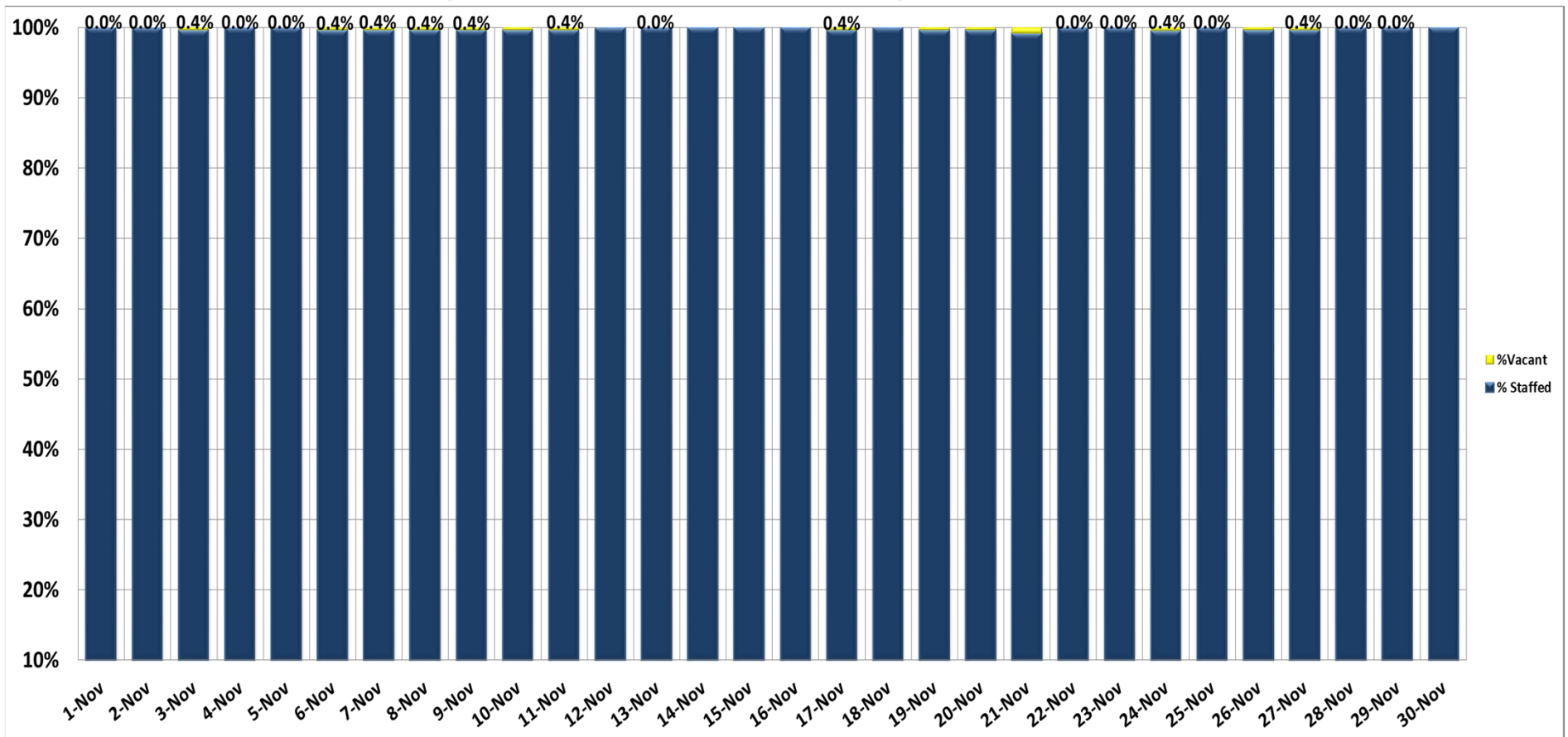
Key Performance Indicators

Ratio of Staffing Levels vs Vacant Assignments – October 2018



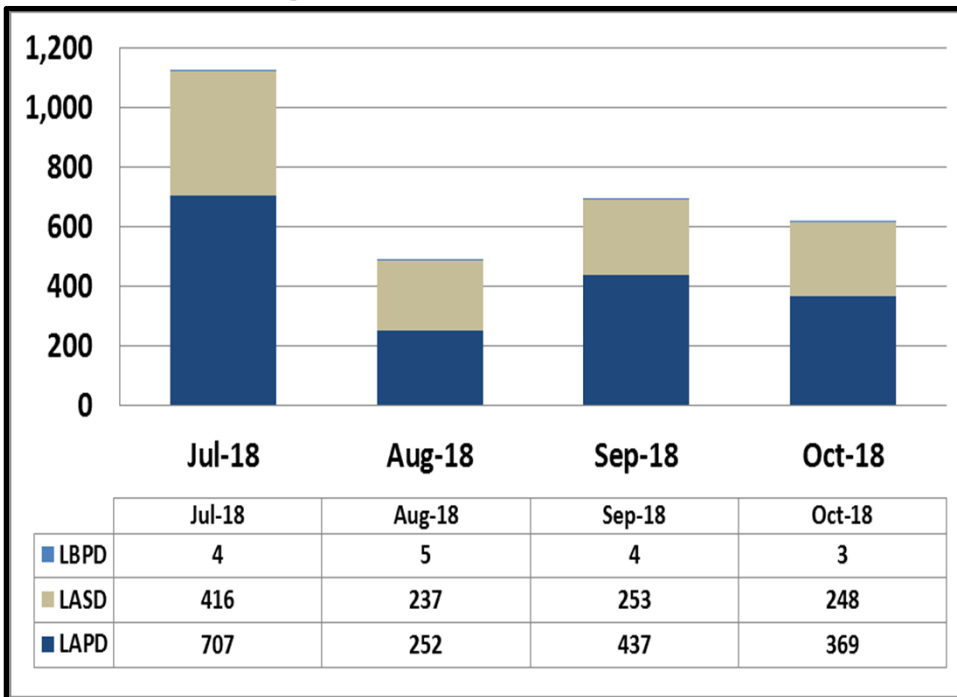
Key Performance Indicators

Ratio of Staffing Levels vs Vacant Assignments – November 2018



Key Performance Indicators

Grade Crossing Operations – October 2018

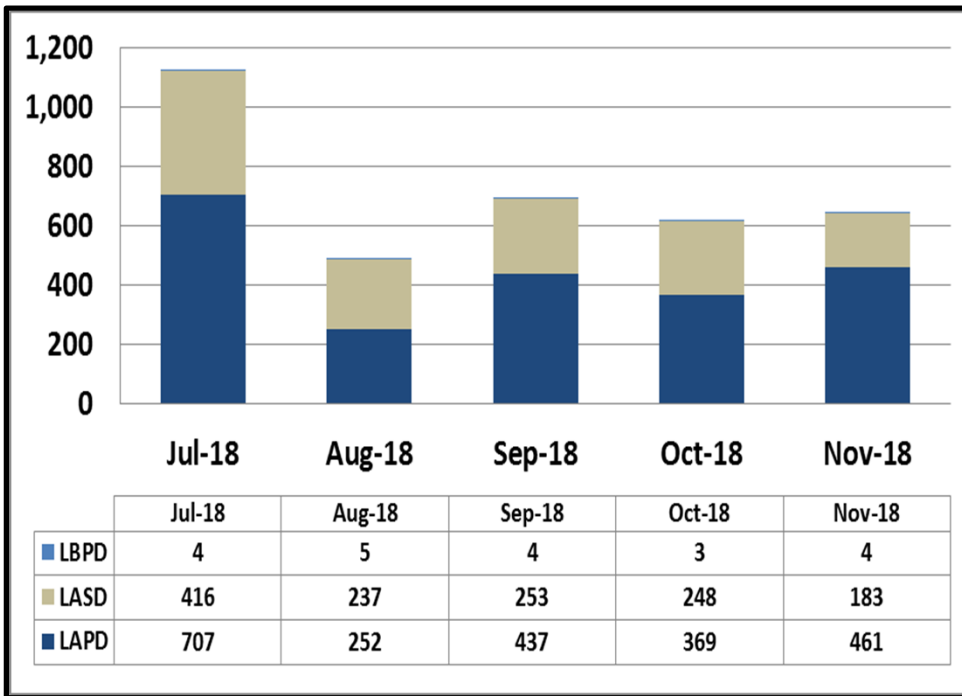


Grade Crossing Operation Locations October:

1. Blue Line Stations (160)
2. Expo Line Stations (210)
3. Gold Line Stations (250)

Key Performance Indicators

Grade Crossing Operations – November 2018

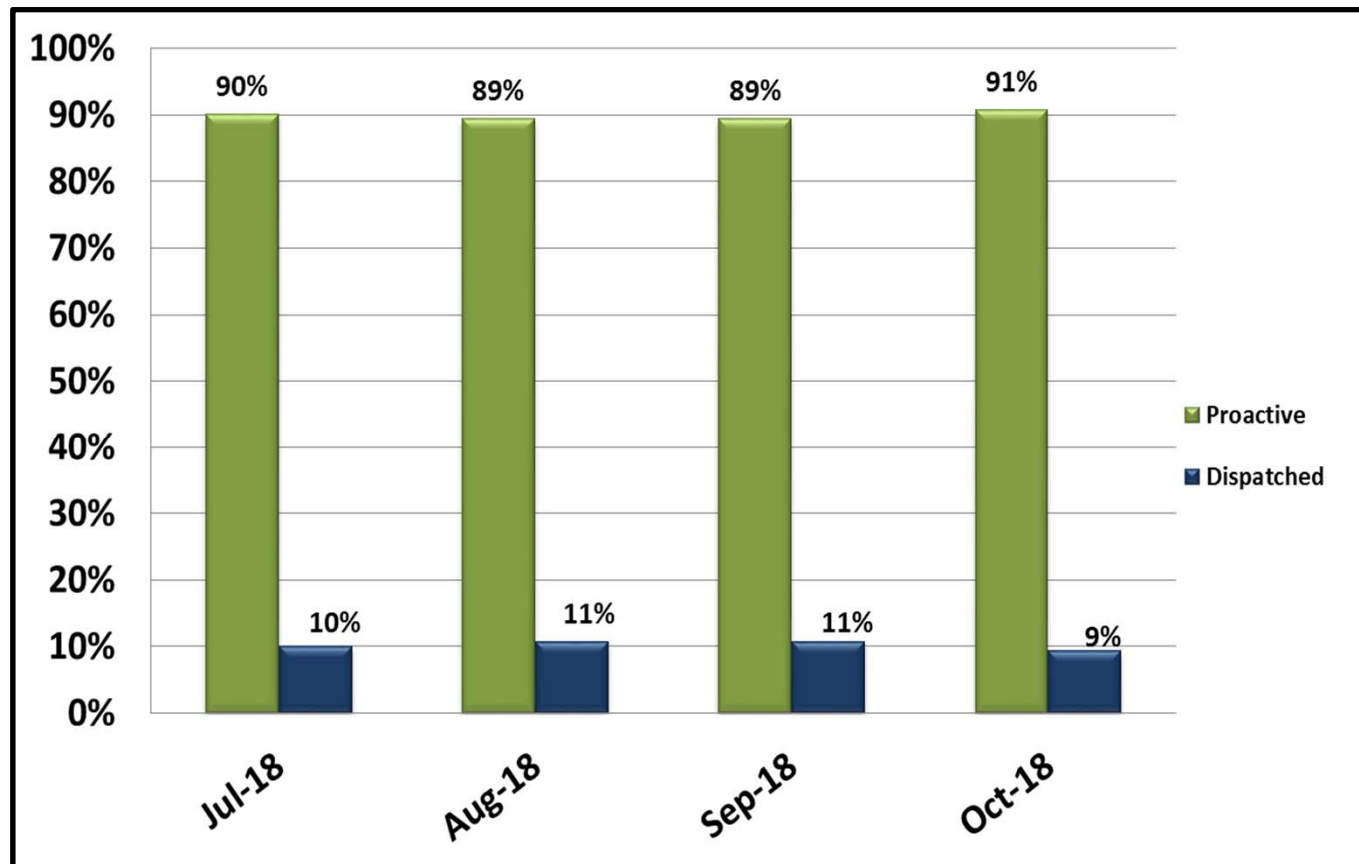


Grade Crossing Operation Locations September:

1. Blue Line Stations (172)
2. Expo Line Stations (295)
3. Gold Line Stations (181)

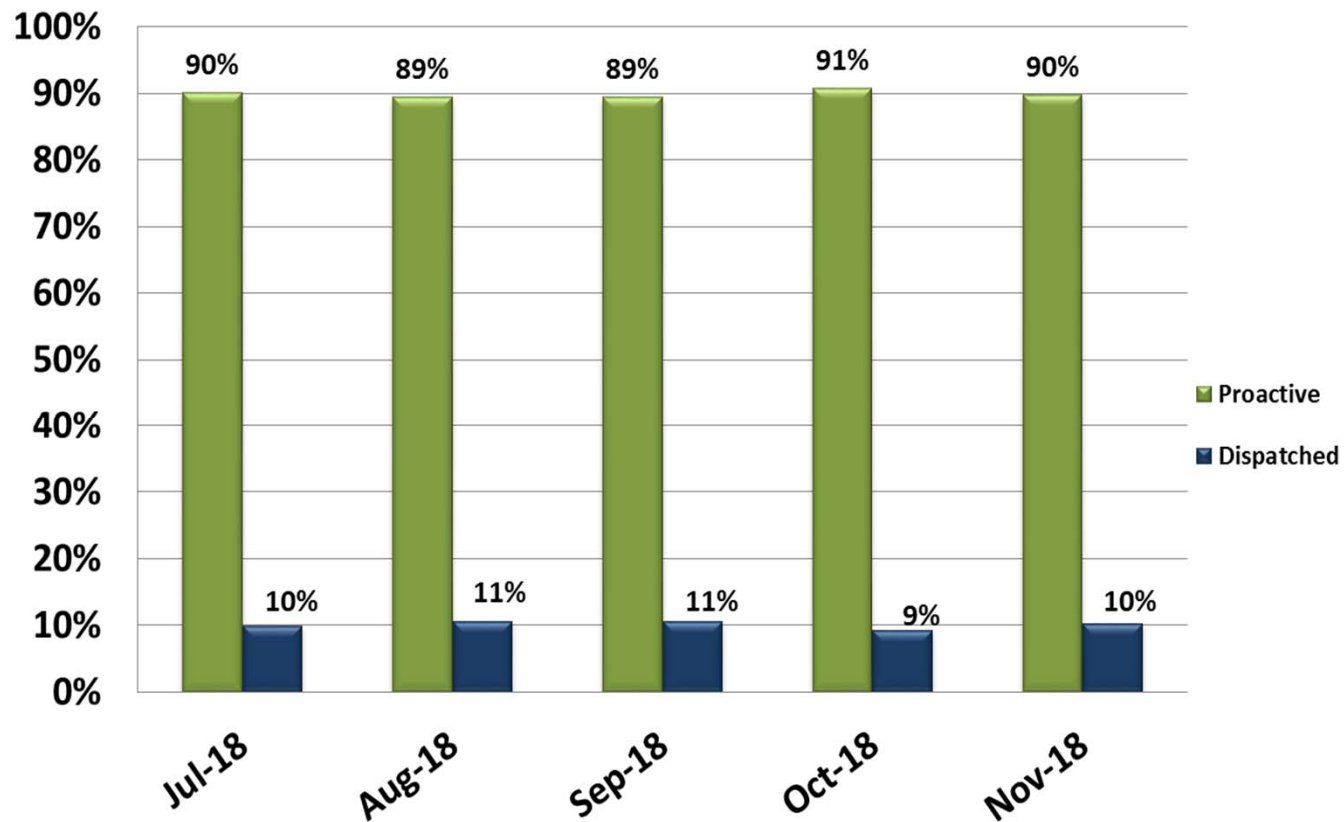
Key Performance Indicators

Ratio of Proactive vs Dispatched Activity - October 2018



Key Performance Indicators

Ratio of Proactive vs Dispatched Activity – November 2018



Winter Surge Enhanced Deployment

- “Winter Surge” was launched in November 2018 and will run through March 2019
- LASD increased deployment by 16.5% from an average of 121 deputies per day to 141
- LAPD increased deployment by 6.5% from an average of 122 officers per day to 130
- Metro Transit Security adjusted its schedule to deploy Fare Compliance Officers earlier at 3 a.m. instead of 5 a.m. to prevent homeless from entering the system
- Metro is also utilizing private security to enhance security on the Green Line tie in and the New Blue