



SYSTEM SECURITY & LAW ENFORCEMENT

Attachment G

Total Crime Summary - April 2025

Total Crimes 5-Year Trend Year-to-Date - Systemwide

	2021	2022	2023	2024	2025
Crimes Against Persons					
Agg Assault	92	153	170	125	140
Agg Assault on Op	6	11	8	13	5
Battery	229	319	348	306	294
Battery on Operator	19	46	46	37	22
Homicide	1	1	2	2	0
Rape	4	5	7	6	2
Robbery	64	110	136	87	109
Sex Offenses	34	31	46	35	43
Subtotal	449	676	763	611	615
Crimes Against Property					
Arson	3	3	0	1	3
Bike Theft	10	18	9	3	2
Burglary	3	7	9	4	4
Larceny	100	196	156	161	173
Motor Vehicle Theft	4	8	16	10	16
Vandalism	91	124	61	35	82
Subtotal	211	356	251	214	280
Crimes Against Society					
Narcotics	64	29	205	276	388
Trespassing	28	37	494	1,010	684
Weapons	18	9	41	55	73
Subtotal	110	75	740	1,341	1,145
Total	770	1,107	1,754	2,166	2,040

Total Crimes 5-Year Trend Current Month only - Systemwide

	Apr-21	Apr-22	Apr-23	Apr-24	Apr-25
Crimes Against Persons					
Agg Assault	31	42	43	32	34
Agg Assault on Op	0	3	3	6	2
Battery	59	74	75	73	70
Battery on Operator	6	11	12	6	5
Homicide	0	0	1	1	0
Rape	0	3	2	0	2
Robbery	17	23	38	28	37
Sex Offenses	10	10	14	10	5
Subtotal	123	166	188	156	155
Crimes Against Property					
Arson	1	1	0	0	0
Bike Theft	4	5	3	1	1
Burglary	1	2	2	2	1
Larceny	34	58	42	36	42
Motor Vehicle Theft	2	1	3	1	5
Vandalism	16	21	17	9	24
Subtotal	58	88	67	49	73
Crimes Against Society					
Narcotics	18	7	61	64	91
Trespassing	3	12	389	166	153
Weapons	3	1	15	12	13
Subtotal	24	20	465	242	257
Total	205	274	720	447	485

Total Crimes 5-Year Trend Year-to-End - Rail

	2021	2022	2023	2024	2025
Crimes Against Persons					
Agg Assault	61	116	130	83	86
Agg Assault on Op	2	0	0	0	0
Battery	157	216	244	201	181
Battery on Operator	1	3	5	0	0
Homicide	1	0	2	1	0
Rape	4	5	7	4	0
Robbery	50	93	99	56	66
Sex Offenses	21	22	26	18	21
Subtotal	297	455	513	363	354
Crimes Against Property					
Arson	3	3	0	1	3
Bike Theft	5	10	3	2	2
Burglary	3	5	9	4	4
Larceny	75	138	111	100	126
Motor Vehicle Theft	2	4	14	5	14
Vandalism	51	90	31	19	40
Subtotal	139	250	168	131	189
Crimes Against Society					
Narcotics	23	15	154	249	341
Trespassing	26	32	488	998	674
Weapons	9	8	32	48	62
Subtotal	58	55	674	1,295	1,077
Total	494	760	1,355	1,789	1,620

Total Crimes 5-Year Trend Current Month only - Rail

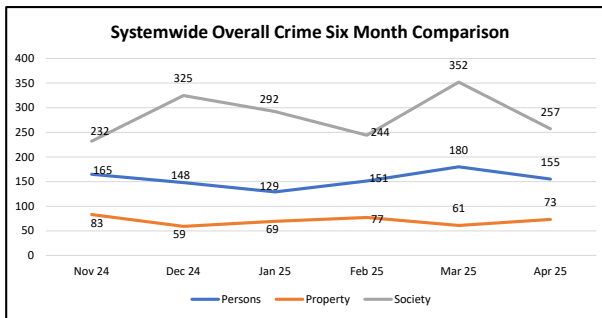
	Apr-21	Apr-22	Apr-23	Apr-24	Apr-25
Crimes Against Persons					
Agg Assault	17	35	35	22	25
Agg Assault on Op	0	0	0	0	0
Battery	36	49	54	51	40
Battery on Operator	0	0	2	0	0
Homicide	0	0	1	1	0
Rape	0	3	2	0	0
Robbery	11	20	22	21	29
Sex Offenses	7	4	10	7	2
Subtotal	71	111	126	102	96
Crimes Against Property					
Arson	1	1	0	0	0
Bike Theft	2	2	2	1	1
Burglary	1	0	2	2	1
Larceny	27	35	28	25	29
Motor Vehicle Theft	0	1	2	1	3
Vandalism	10	15	10	3	10
Subtotal	41	54	44	32	44
Crimes Against Society					
Narcotics	7	2	49	55	78
Trespassing	3	11	387	162	148
Weapons	1	1	14	12	10
Subtotal	11	14	450	229	236
Total	123	179	620	363	376

Total Crimes 5-Year Trend Year-to-Date - Bus

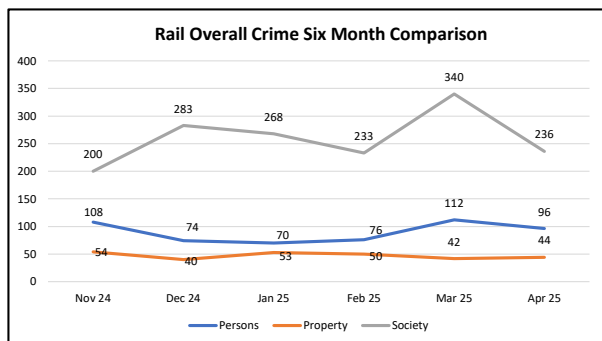
	2021	2022	2023	2024	2025
Crimes Against Persons					
Agg Assault	31	37	40	42	54
Agg Assault on Op	4	11	8	13	5
Battery	72	103	104	105	113
Battery on Operator	18	43	41	37	22
Homicide	0	1	0	1	0
Rape	0	0	0	2	2
Robbery	14	17	37	31	43
Sex Offenses	13	9	20	17	22
Subtotal	152	221	250	248	261
Crimes Against Property					
Arson	0	0	0	0	0
Bike Theft	5	8	6	1	0
Burglary	0	2	0	0	0
Larceny	25	58	45	61	47
Motor Vehicle Theft	2	4	2	5	2
Vandalism	40	34	30	16	42
Subtotal	72	106	83	83	91
Crimes Against Society					
Narcotics	41	14	51	27	47
Trespassing	2	5	6	12	10
Weapons	9	1	9	7	11
Subtotal	52	20	66	46	68
Total	276	347	399	377	420

Total Crimes 5-Year Trend Current Month only - Bus

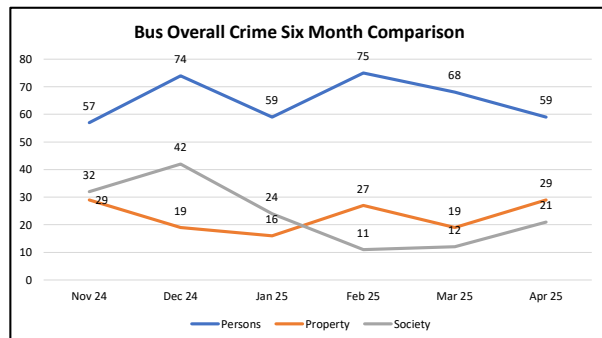
	Apr-21	Apr-22	Apr-23	Apr-24	Apr-25
Crimes Against Persons					
Agg Assault	14	7	8	10	9
Agg Assault on Op	0	3	3	6	2
Battery	23	25	21	22	30
Battery on Operator	6	11	10	6	5
Homicide	0	0	0	0	0
Rape	0	0	0	0	2
Robbery	6	3	16	7	8
Sex Offenses	3	6	4	3	3
Subtotal	52	55	62	54	59
Crimes Against Property					
Arson	0	0	0	0	0
Bike Theft	2	3	1	0	0
Burglary	0	2	0	0	0
Larceny	7	23	14	11	13
Motor Vehicle Theft	2	0	1	0	2
Vandalism	6	6	7	6	14
Subtotal	17	34	23	17	29
Crimes Against Society					
Narcotics	11	5	12	9	13
Trespassing	0	1	2	4	5
Weapons	2	0	1	0	3
Subtotal	13	6	15	13	21
Total	82	95	100	84	109



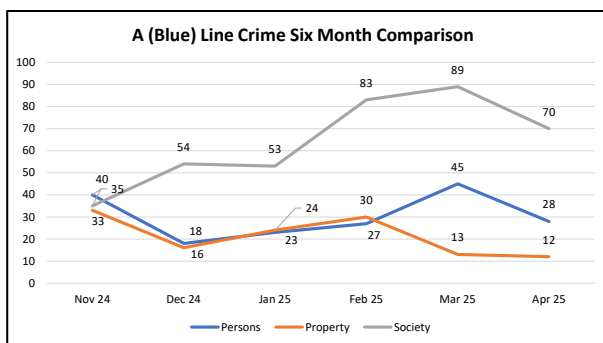
Systemwide	Apr 25	Mar 25	% Change
Crimes Against Persons			
Agg Assault	34	54	-37.0%
Agg Assault on Op	2	0	200.0%
Battery	70	78	-10.3%
Battery on Operator	5	7	-28.6%
Homicide	0	0	0.0%
Rape	2	0	200.0%
Robbery	37	25	48.0%
Sex Offenses	5	16	-68.8%
Subtotal	155	180	-13.9%
Crimes Against Property			
Arson	0	1	-100.0%
Bike Theft	1	0	100.0%
Burglary	1	0	100.0%
Larceny	42	36	16.7%
Motor Vehicle Theft	5	3	66.7%
Vandalism	24	21	14.3%
Subtotal	73	61	19.7%
Crimes Against Society			
Narcotics	91	107	-15.0%
Trespassing	153	219	-30.1%
Weapons	13	26	-50.0%
Subtotal	257	352	-27.0%
Total	485	593	-18.2%



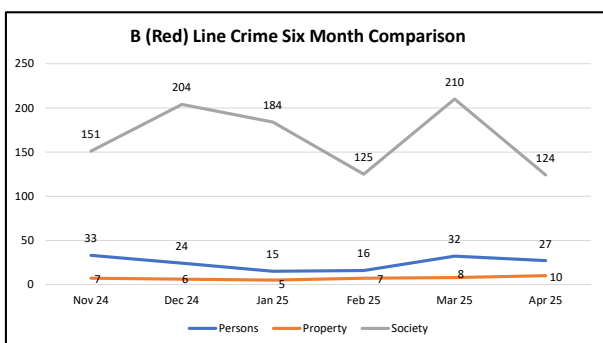
Rail	Apr 25	Mar 25	% Change
Crimes Against Persons			
Agg Assault	25	37	-32.4%
Agg Assault on Op	0	0	0.0%
Battery	40	52	-23.1%
Battery on Operator	0	0	0.0%
Homicide	0	0	0.0%
Rape	0	0	0.0%
Robbery	29	15	93.3%
Sex Offenses	2	8	-75.0%
Subtotal	96	112	-14.3%
Crimes Against Property			
Arson	0	1	-100.0%
Bike Theft	1	0	100.0%
Burglary	1	0	100.0%
Larceny	29	29	0.0%
Motor Vehicle Theft	3	3	0.0%
Vandalism	10	9	11.1%
Subtotal	44	42	4.8%
Crimes Against Society			
Narcotics	78	97	-19.6%
Trespassing	148	218	-32.1%
Weapons	10	25	-60.0%
Subtotal	236	340	-30.6%
Total	376	494	-23.9%



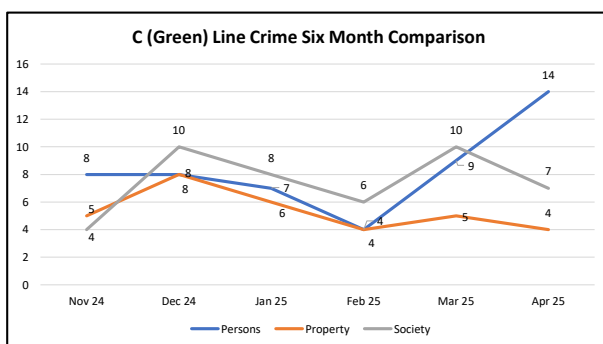
Bus	Apr 25	Mar 25	% Change
Crimes Against Persons			
Agg Assault	9	17	-47.1%
Agg Assault on Op	2	0	200.0%
Battery	30	26	15.4%
Battery on Operator	5	7	-28.6%
Homicide	0	0	0.0%
Rape	2	0	200.0%
Robbery	8	10	-20.0%
Sex Offenses	3	8	-62.5%
Subtotal	59	68	-13.2%
Crimes Against Property			
Arson	0	0	0.0%
Bike Theft	0	0	0.0%
Burglary	0	0	0.0%
Larceny	13	7	85.7%
Motor Vehicle Theft	2	0	200.0%
Vandalism	14	12	16.7%
Subtotal	29	19	52.6%
Crimes Against Society			
Narcotics	13	10	30.0%
Trespassing	5	1	400.0%
Weapons	3	1	200.0%
Subtotal	21	12	75.0%
Total	109	99	10.1%



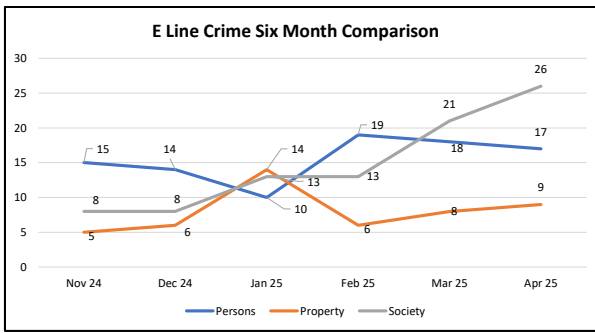
A (Blue) Line	Apr 25	Mar 25	% Change
Crimes Against Persons			
Agg Assault	11	19	-42.1%
Agg Assault on Op	0	0	0.0%
Battery	10	21	-52.4%
Battery on Operator	0	0	0.0%
Homicide	0	0	0.0%
Rape	0	0	0.0%
Robbery	6	3	100.0%
Sex Offenses	1	2	-50.0%
Subtotal	28	45	-37.8%
Crimes Against Property			
Arson	0	0	0.0%
Bike Theft	1	0	100.0%
Burglary	1	0	100.0%
Larceny	5	7	-28.6%
Motor Vehicle Theft	2	2	0.0%
Vandalism	3	4	-25.0%
Subtotal	12	13	-7.7%
Crimes Against Society			
Narcotics	19	18	5.6%
Trespassing	46	63	-27.0%
Weapons	5	8	-37.5%
Subtotal	70	89	-21.3%
Total	110	147	-25.2%



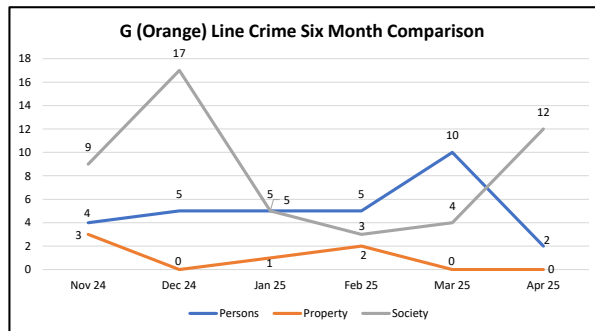
B (Red) Line	Apr 25	Mar 25	% Change
Crimes Against Persons			
Agg Assault	2	8	-75.0%
Agg Assault on Op	0	0	0.0%
Battery	20	14	42.9%
Battery on Operator	0	0	0.0%
Homicide	0	0	0.0%
Rape	0	0	0.0%
Robbery	5	6	-16.7%
Sex Offenses	0	4	-100.0%
Subtotal	27	32	-15.6%
Crimes Against Property			
Arson	0	0	0.0%
Bike Theft	0	0	0.0%
Burglary	0	0	0.0%
Larceny	8	7	14.3%
Motor Vehicle Theft	0	0	0.0%
Vandalism	2	1	100.0%
Subtotal	10	8	25.0%
Crimes Against Society			
Narcotics	51	59	-13.6%
Trespassing	69	135	-48.9%
Weapons	4	16	-75.0%
Subtotal	124	210	-41.0%
Total	161	250	-35.6%



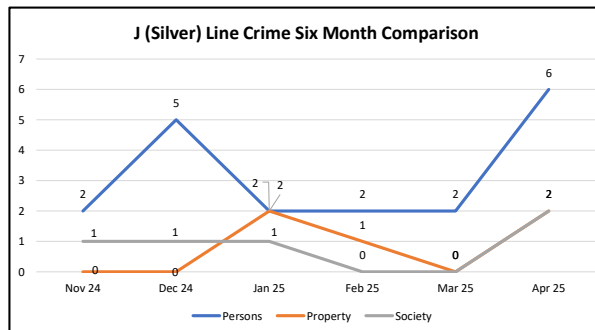
C (Green) Line	Apr 25	Mar 25	% Change
Crimes Against Persons			
Agg Assault	6	3	100.0%
Agg Assault on Op	0	0	0.0%
Battery	3	1	200.0%
Battery on Operator	0	0	0.0%
Homicide	0	0	0.0%
Rape	0	0	0.0%
Robbery	5	4	25.0%
Sex Offenses	0	1	-100.0%
Subtotal	14	9	55.6%
Crimes Against Property			
Arson	0	0	0.0%
Bike Theft	0	0	0.0%
Burglary	0	0	0.0%
Larceny	3	3	0.0%
Motor Vehicle Theft	1	1	0.0%
Vandalism	0	1	-100.0%
Subtotal	4	5	-20.0%
Crimes Against Society			
Narcotics	1	6	-83.3%
Trespassing	6	4	50.0%
Weapons	0	0	0.0%
Subtotal	7	10	-30.0%
Total	25	24	4.2%



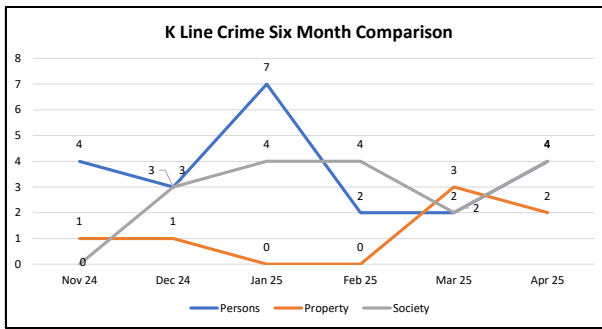
E Line	Apr 25	Mar 25	% Change
Crimes Against Persons			
Agg Assault	3	5	-40.0%
Agg Assault on Op	0	0	0.0%
Battery	4	11	-63.6%
Battery on Operator	0	0	0.0%
Homicide	0	0	0.0%
Rape	0	0	0.0%
Robbery	9	2	350.0%
Sex Offenses	1	0	100.0%
Subtotal	17	18	-5.6%
Crimes Against Property			
Arson	0	0	0.0%
Bike Theft	0	0	0.0%
Burglary	0	0	0.0%
Larceny	7	7	0.0%
Motor Vehicle Theft	0	0	0.0%
Vandalism	2	1	100.0%
Subtotal	9	8	12.5%
Crimes Against Society			
Narcotics	6	6	0.0%
Trespassing	19	14	35.7%
Weapons	1	1	0.0%
Subtotal	26	21	23.8%
Total	52	47	10.6%



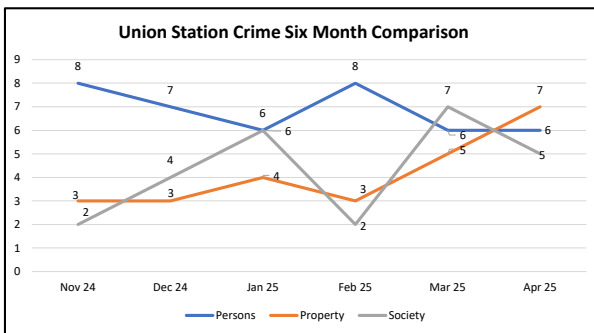
G (Orange) Line	Apr 25	Mar 25	% Change
Crimes Against Persons			
Agg Assault	0	3	-100.0%
Agg Assault on Op	0	0	0.0%
Battery	2	5	-60.0%
Battery on Operator	0	0	0.0%
Homicide	0	0	0.0%
Rape	0	0	0.0%
Robbery	0	1	-100.0%
Sex Offenses	0	1	-100.0%
Subtotal	2	10	-80.0%
Crimes Against Property			
Arson	0	0	0.0%
Bike Theft	0	0	0.0%
Burglary	0	0	0.0%
Larceny	0	0	0.0%
Motor Vehicle Theft	0	0	0.0%
Vandalism	0	0	0.0%
Subtotal	0	0	0.0%
Crimes Against Society			
Narcotics	8	3	166.7%
Trespassing	3	0	300.0%
Weapons	1	1	0.0%
Subtotal	12	4	200.0%
Total	14	14	0.0%



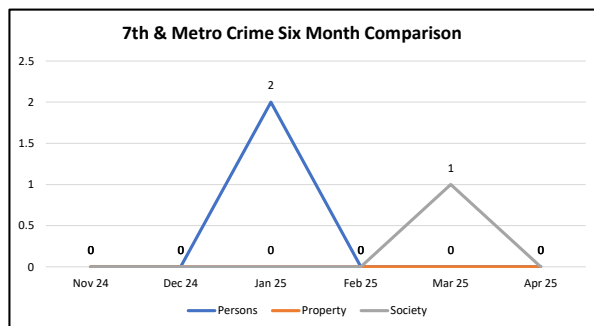
J (Silver) Line	Apr 25	Mar 25	% Change
Crimes Against Persons			
Agg Assault	4	0	400.0%
Agg Assault on Op	0	0	0.0%
Battery	0	2	-100.0%
Battery on Operator	0	0	0.0%
Homicide	0	0	0.0%
Rape	0	0	0.0%
Robbery	2	0	200.0%
Sex Offenses	0	0	0.0%
Subtotal	6	2	200.0%
Crimes Against Property			
Arson	0	0	0.0%
Bike Theft	0	0	0.0%
Burglary	0	0	0.0%
Larceny	1	0	100.0%
Motor Vehicle Theft	1	0	100.0%
Vandalism	0	0	0.0%
Subtotal	2	0	200.0%
Crimes Against Society			
Narcotics	2	0	200.0%
Trespassing	0	0	0.0%
Weapons	0	0	0.0%
Subtotal	2	0	200.0%
Total	10	2	400.0%



K Line	Apr 25	Mar 25	% Change
Crimes Against Persons			
Agg Assault	1	1	0.0%
Agg Assault on Op	0	0	0.0%
Battery	2	0	200.0%
Battery on Operator	0	0	0.0%
Homicide	0	0	0.0%
Rape	0	0	0.0%
Robbery	1	0	100.0%
Sex Offenses	0	1	-100.0%
Subtotal	4	2	100.0%
Crimes Against Property			
Arson	0	1	-100.0%
Bike Theft	0	0	0.0%
Burglary	0	0	0.0%
Larceny	2	1	100.0%
Motor Vehicle Theft	0	0	0.0%
Vandalism	0	1	-100.0%
Subtotal	2	3	-33.3%
Crimes Against Society			
Narcotics	1	0	100.0%
Trespassing	3	2	50.0%
Weapons	0	0	0.0%
Subtotal	4	2	100.0%
Total	10	7	42.9%



Union Station	Apr 25	Mar 25	% Change
Crimes Against Persons			
Agg Assault	2	1	100.0%
Agg Assault on Op	0	0	0.0%
Battery	1	5	-80.0%
Battery on Operator	0	0	0.0%
Homicide	0	0	0.0%
Rape	0	0	0.0%
Robbery	3	0	300.0%
Sex Offenses	0	0	0.0%
Subtotal	6	6	0.0%
Crimes Against Property			
Arson	0	0	0.0%
Bike Theft	0	0	0.0%
Burglary	0	0	0.0%
Larceny	4	4	0.0%
Motor Vehicle Theft	0	0	0.0%
Vandalism	3	1	200.0%
Subtotal	7	5	40.0%
Crimes Against Society			
Narcotics	0	7	-100.0%
Trespassing	5	0	500.0%
Weapons	0	0	0.0%
Subtotal	5	7	-28.6%
Total	18	18	0.0%



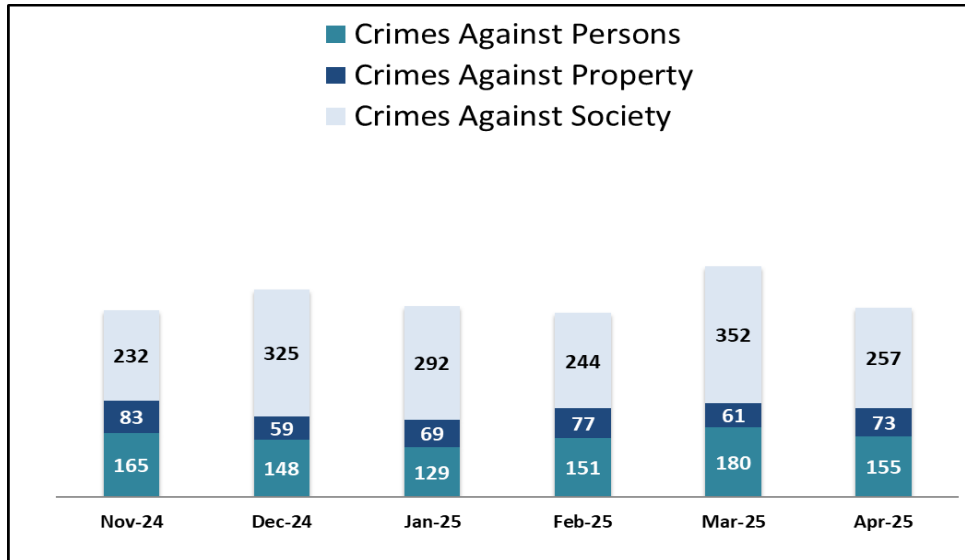
7th & Metro	Apr 25	Mar 25	% Change
Crimes Against Persons			
Agg Assault	0	0	0.0%
Agg Assault on Op	0	0	0.0%
Battery	0	0	0.0%
Battery on Operator	0	0	0.0%
Homicide	0	0	0.0%
Rape	0	0	0.0%
Robbery	0	0	0.0%
Sex Offenses	0	0	0.0%
Subtotal	0	0	0.0%
Crimes Against Property			
Arson	0	0	0.0%
Bike Theft	0	0	0.0%
Burglary	0	0	0.0%
Larceny	0	0	0.0%
Motor Vehicle Theft	0	0	0.0%
Vandalism	0	0	0.0%
Subtotal	0	0	0.0%
Crimes Against Society			
Narcotics	0	1	-100.0%
Trespassing	0	0	0.0%
Weapons	0	0	0.0%
Subtotal	0	1	-100.0%
Total	0	1	-100.0%

SYSTEMWIDE LAW ENFORCEMENT OVERVIEW

APRIL 2025

Attachment G

Total Crimes

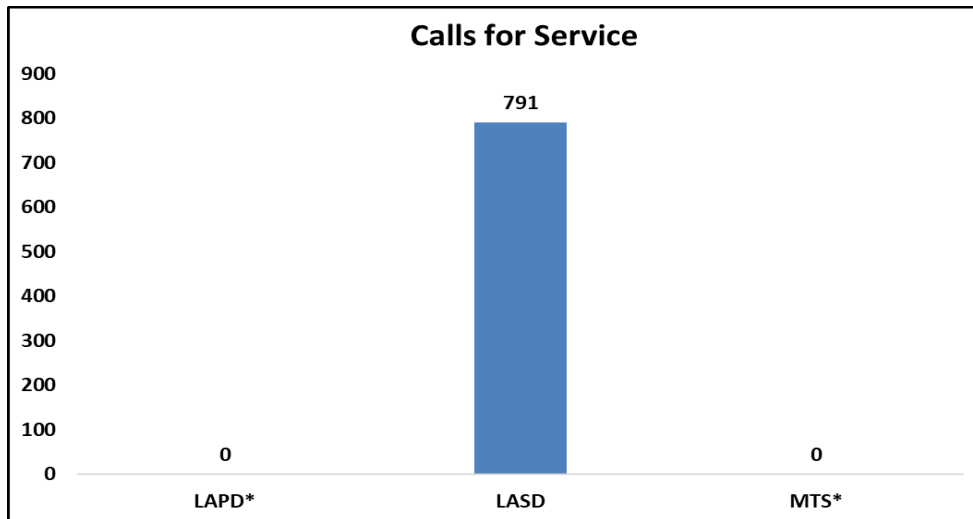


Crimes Against Persons: violent crimes (i.e., homicide, aggravated assaults) are those in which the victims are always individuals

Crimes Against Property: crimes to obtain money, property, or some other benefit (i.e., theft, vandalism, robbery)

Crimes Against Society: represent society's prohibition against engaging in certain types of activity (i.e., drug violations)

Calls for Service



* LAPD and MTS Calls for Service data is currently unavailable



SYSTEMWIDE LAW ENFORCEMENT OVERVIEW

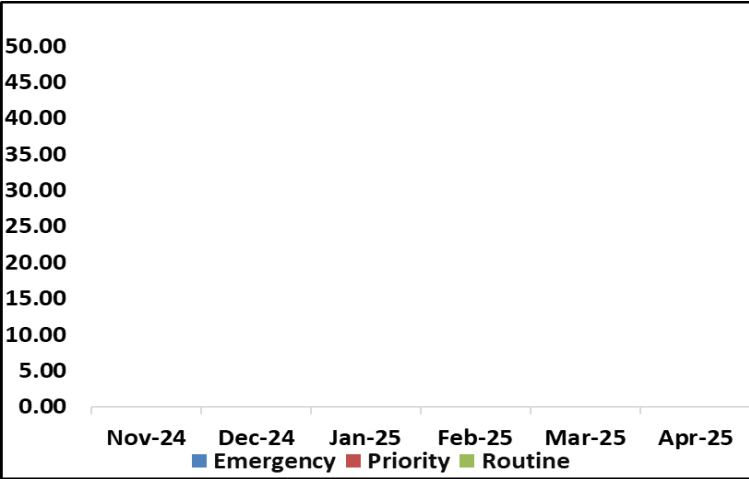
APRIL 2025

Attachment G

Average Incident Response Times

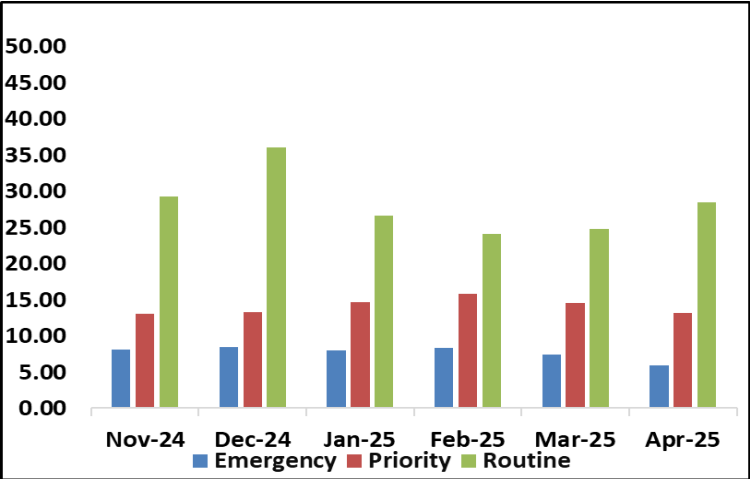
These graphs show how long it takes (in minutes) for LAPD, LASD, and MTS to respond to Emergency, Priority, and Routine calls

LAPD

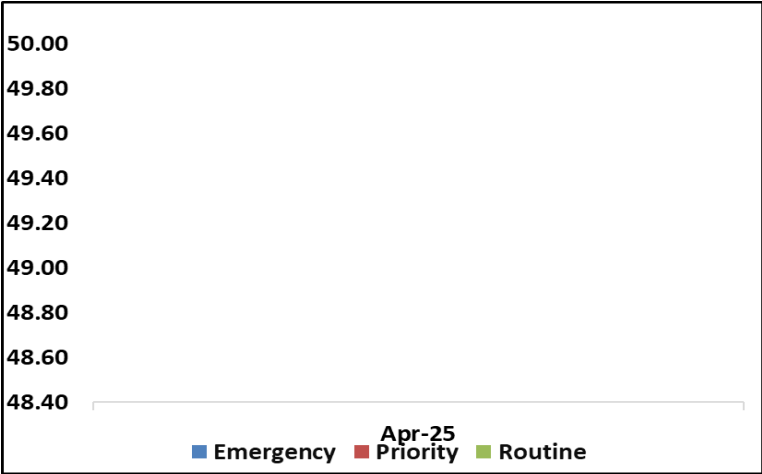


* LAPD Incident Response Times data is currently unavailable

LASD



MTS



* MTS Incident Response Times data is currently unavailable

Transit Police

Monthly Crime Report



Attachment G

	2025	2024	%
	April	April	Change
CRIMES AGAINST PERSONS			
Homicide	0	1	-100.0%
Rape	2	0	200.0%
Robbery	37	28	32.1%
Aggravated Assault	34	32	6.3%
Aggravated Assault on Operator	2	6	-66.7%
Battery	70	73	-4.1%
Battery on Operator	5	6	-16.7%
Sex Offenses	5	10	-50.0%
SUB-TOTAL	155	156	-0.6%
CRIMES AGAINST PROPERTY			
Burglary	1	2	-50.0%
Larceny	42	36	16.7%
Bike Theft	1	1	0.0%
Motor Vehicle Theft	5	1	400.0%
Arson	0	0	0.0%
Vandalism	24	9	166.7%
SUB-TOTAL	73	49	49.0%
CRIMES AGAINST SOCIETY			
Weapons	13	12	8.3%
Narcotics	91	64	42.2%
Trespassing	153	166	-7.8%
SUB-TOTAL	257	242	6.2%
TOTAL	485	447	8.5%
ENFORCEMENT EFFORTS			
Arrests	408	519	-21.4%
Citations	587	622	-5.6%
Calls for Service	791	7,198	-89.0%



SYSTEM SECURITY & LAW ENFORCEMENT

MONTHLY, BI-ANNUAL, ANNUAL COMPARISON

APRIL 2025

Attachment G

Crimes

Monthly

System-Wide	Apr-25	Apr-24	% Change
Crimes Against Persons	155	156	-0.6%
Crimes Against Property	73	49	49.0%
Crimes Against Society	257	242	6.2%
Total	485	447	8.5%

Six Months

System-Wide	Nov-24-Apr-25	Oct-23-Mar-24	% Change
Crimes Against Persons	928	965	-3.8%
Crimes Against Property	422	326	29.4%
Crimes Against Society	1,702	2,089	-18.5%
Total	3,052	3,380	-9.7%

Annual

System-Wide	May-24-Apr-25	May-23-Apr-24	% Change
Crimes Against Persons	2,061	2,083	-1.1%
Crimes Against Property	886	712	24.4%
Crimes Against Society	5,884	2,932	100.7%
Total	8,831	5,727	54.2%

Average Emergency Response Times

Monthly

Apr-25	Apr-24	% Change
2.95	5.97	-50.6%

Six Months

Nov-24-Apr-25	Oct-23-Mar-24	% Change
3.71	5.46	-32.0%

Annual

May-24-Apr-25	May-23-Apr-24	% Change
4.33	5.41	-20.0%

Bus Operator Assaults

Monthly

Apr-25	Apr-24	% Change
7	12	-41.7%

Six Months

Nov-24-Apr-25	Oct-23-Mar-24	% Change
45	87	-48.3%

Annual

May-24-Apr-25	May-23-Apr-24	% Change
128	164	-22.0%

Ridership

Monthly

Apr-25	Apr-24	% Change
26,723,700	26,210,300	2.0%

Six Months

Nov-24-Apr-25	Oct-23-Mar-24	% Change
153,963,293	146,850,867	4.8%

Annual

May-24-Apr-25	May-23-Apr-24	% Change
314,428,952	295,502,809	6.4%



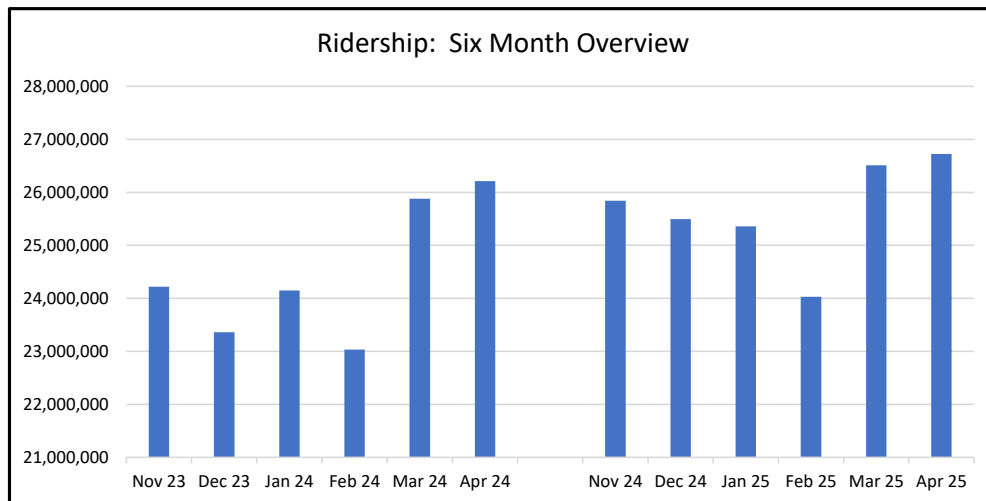
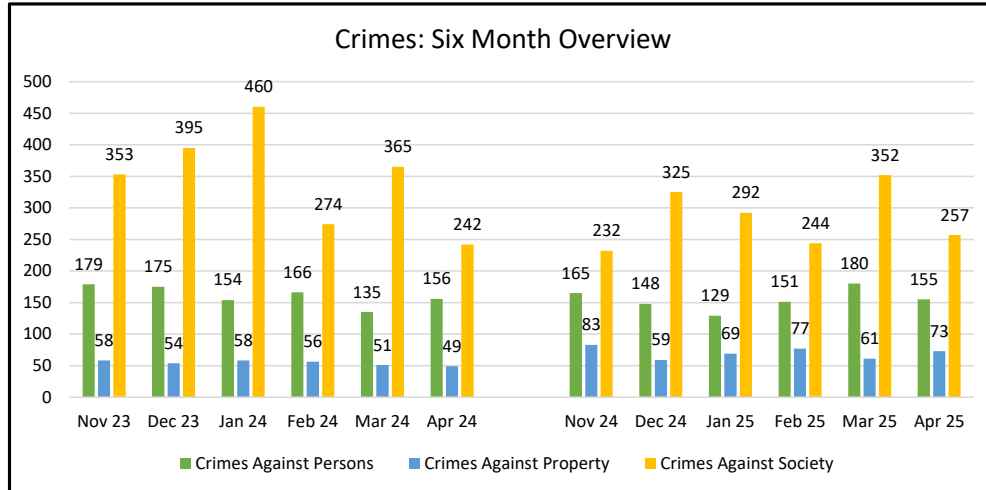
Metro

SYSTEM SECURITY & LAW ENFORCEMENT

MONTHLY, BI-ANNUAL, ANNUAL COMPARISON

APRIL 2025

Attachment G



A LINE (BLUE)

ATTACHMENT G

MONTHLY UPDATE ON TRANSIT POLICING PERFORMANCE - APRIL 2025

REPORTED CRIME				
CRIMES AGAINST PERSONS	LAPD	LASD	MTS	FYTD
Homicide	0	0	0	0
Rape	0	0	0	0
Robbery	5	1	0	50
Aggravated Assault	2	9	0	87
Aggravated Assault on Operator	0	0	0	1
Battery	6	4	0	135
Battery Rail Operator	0	0	0	0
Sex Offenses	0	0	1	14
SUB-TOTAL	13	14	1	287
CRIMES AGAINST PROPERTY	LAPD	LASD	MTS	FYTD
Burglary	0	0	1	2
Larceny	2	3	0	147
Bike Theft	0	1	0	2
Motor Vehicle Theft	1	1	0	11
Arson	0	0	0	2
Vandalism	0	3	0	33
SUB-TOTAL	3	8	1	197
CRIMES AGAINST SOCIETY	LAPD	LASD	MTS	FYTD
Weapons	4	0	1	49
Narcotics	17	2	0	207
Trespassing	38	4	4	585
SUB-TOTAL	59	6	5	841
TOTAL	75	28	7	1,325

CRIMES PER STATION				
STATION	CRIMES AGAINST PERSONS	CRIMES AGAINST PROPERTY	CRIMES AGAINST SOCIETY	FYTD
APU/Citrus College	0	0	0	7
Azusa Downtown	0	0	0	21
Irwindale	0	2	0	4
Duarte/City of Hope	0	0	0	5
Monrovia	1	0	0	7
Arcadia	1	0	0	4
Sierra Madre Villa	1	0	0	12
Allen	0	0	0	2
Lake	0	0	0	18
Memorial Park	0	0	0	7
Del Mar	0	0	0	5
Fillmore	0	0	0	9
South Pasadena	0	0	0	11
Highland Park	2	1	1	28
Southwest Museum	0	1	1	34
Heritage Square	0	0	0	21
Lincoln/Cypress	1	0	0	32
Chinatown	1	0	26	173
Union Station	2	0	4	31
Little Tokyo/Arts Dist	1	0	0	52
Historic Broadway	0	0	1	30
Grand Av Arts/Bunker Hill	0	0	11	222
7th St/Metro Ctr	1	0	1	16
Pico	2	0	5	62
Grand/LATTC	2	0	5	82
San Pedro St	1	0	0	16
Washington	0	0	4	23
Vernon	0	0	0	10
Slauson	2	2	0	28
Florence	1	1	0	30
Firestone	1	0	0	36
103rd St/Watts Towers	0	1	0	23
Willowbrook/Rosa Parks	5	2	3	108
Compton	2	0	1	33
Artesia	0	1	2	45
Del Amo	0	0	0	17
Wardlow	0	0	1	1
Willow St	0	0	0	16
PCH	0	0	0	5
Anaheim St	0	0	0	8
5th St	0	0	0	1
1st St	0	0	0	1
Downtown Long Beach	1	0	4	17
Pacific Av	0	0	0	3
Blue Line Rail Yard	0	0	0	7
Other	0	0	0	0
Total	28	11	70	1,323

ARRESTS				
AGENCY	LAPD	LASD	MTS	FYTD
Felony	11	10	0	351
Misdemeanor	71	28	0	1,091
TOTAL	82	38	0	1,442

CITATIONS				
AGENCY	LAPD	LASD	MTS	FYTD
Misdemeanor Citations	0	0	0	5
Other Citations	51	30	0	1,199
Vehicle Code Citations	11	2	0	136
TOTAL	62	32	0	1,340

CALLS FOR SERVICE				
AGENCY	LAPD	LASD	MTS	FYTD
Routine	Currently Unavailable	129	0	3,677
Priority	Currently Unavailable	89	0	1,306
Emergency	Currently Unavailable	11	0	188
TOTAL	0	229	0	5,171

DISPATCHED VS. PROACTIVE			
AGENCY	LAPD	LASD	MTS
Dispatched	28%	N/C	0%
Proactive	72%	N/C	0%
TOTAL	100%	0%	0%

PERCENTAGE OF TIME SPENT ON THE RAIL SYSTEM	
Blue Line-LAPD	80%
Blue Line-LASD	N/C
Blue Line-MTS	0%

GRADE CROSSING OPERATIONS				
LOCATION	LAPD	LASD	MTS	FYTD
Azusa	0	22	0	263
Irwindale	0	22	0	244
Duarte Station	0	5	0	68
Monrovia	0	6	0	105
Magnolia Ave	0	0	0	0
Arcadia Station	0	15	0	177
Pasadena	0	56	0	437
South Pasadena	0	6	0	136
Marmion Way	0	0	0	0
Flower St	0	0	0	0
Washington St	50	0	0	456
Slauson	0	3	0	110
Florence	0	7	0	155
Firestone	0	3	0	109
103rd St	26	0	0	125
Willowbrook	0	16	0	139
Compton	0	2	0	58
Artesia	0	1	0	63
Del Amo	0	2	0	49
Wardlow Rd	0	0	0	20
Long Beach Blvd	0	0	0	0
Pacific Av	0	0	0	0
TOTAL	76	166	0	2,714

LEGEND	
Los Angeles Police Department	
Los Angeles County Sheriff's Department	
Metro Transit Security	

B LINE (RED)

ATTACHMENT G

MONTHLY UPDATE ON TRANSIT POLICING PERFORMANCE - APRIL 2025

REPORTED CRIME		
CRIMES AGAINST PERSONS	LAPD	FYTD
Homicide	0	0
Rape	0	1
Robbery	5	39
Aggravated Assault	2	74
Aggravated Assault on Operator	0	0
Battery	20	206
Battery Rail Operator	0	0
Sex Offenses	0	21
SUB-TOTAL	27	341
CRIMES AGAINST PROPERTY	LAPD	FYTD
Burglary	0	0
Larceny	8	63
Bike Theft	0	0
Motor Vehicle Theft	0	1
Arson	0	0
Vandalism	2	24
SUB-TOTAL	10	88
CRIMES AGAINST SOCIETY	LAPD	FYTD
Weapons	4	119
Narcotics	51	698
Trespassing	69	2,105
SUB-TOTAL	124	2,922
TOTAL	161	3,351

ARRESTS		
AGENCY	LAPD	FYTD
Felony	18	798
Misdemeanor	132	3,357
TOTAL	150	4,155

CITATIONS		
AGENCY	LAPD	FYTD
Other Citations	164	3,168
Vehicle Code Citations	22	369
TOTAL	186	3,537

CALLS FOR SERVICE		
AGENCY	LAPD	FYTD
Routine	Currently Unavailable	0
Priority	Currently Unavailable	0
Emergency	Currently Unavailable	0
TOTAL	0	0

DISPATCHED VS. PROACTIVE		
AGENCY	LAPD	
Dispatched	29%	
Proactive	71%	
TOTAL	100%	

PERCENTAGE OF TIME SPENT ON THE RAIL SYSTEM	
Red Line- LAPD	82%

LEGEND
Los Angeles Police Department

CRIMES PER STATION				
STATION	CRIMES AGAINST PERSONS	CRIMES AGAINST PROPERTY	CRIMES AGAINST SOCIETY	FYTD
Union Station	2	3	8	785
Civic Center/Grand Park	0	0	1	33
Pershing Square	1	0	20	391
7th St/Metro Ctr	3	2	10	271
Westlake/MacArthur Park	4	0	18	528
Wilshire/Vermont	1	0	6	225
Wilshire/Normandie	0	0	0	26
Vermont/Beverly	1	0	4	97
Wilshire/Western	0	0	1	70
Vermont/Santa Monica	0	0	0	49
Vermont/Sunset	3	1	6	75
Hollywood/Western	3	0	9	88
Hollywood/Vine	0	1	9	110
Hollywood/Highland	2	0	5	88
Universal City/Studio City	1	1	6	88
North Hollywood	6	2	21	427
Red Line Rail Yard	0	0	0	0
Total	27	10	124	3,351

C LINE (GREEN)

ATTACHMENT G

MONTHLY UPDATE ON TRANSIT POLICING PERFORMANCE - APRIL 2025

REPORTED CRIME			
CRIMES AGAINST PERSONS	LAPD	LASD	FYTD
Homicide	0	0	0
Rape	0	0	0
Robbery	0	5	35
Aggravated Assault	0	6	35
Aggravated Assault on Operator	0	0	0
Battery	0	3	22
Battery Rail Operator	0	0	0
Sex Offenses	0	0	8
SUB-TOTAL	0	14	100
CRIMES AGAINST PROPERTY	LAPD	LASD	FYTD
Burglary	0	0	0
Larceny	1	2	40
Bike Theft	0	0	0
Motor Vehicle Theft	1	0	12
Arson	0	0	0
Vandalism	0	0	10
SUB-TOTAL	2	2	62
CRIMES AGAINST SOCIETY	LAPD	LASD	FYTD
Weapons	0	0	14
Narcotics	0	1	56
Trespassing	5	1	69
SUB-TOTAL	5	2	139
TOTAL	7	18	301

CRIMES PER STATION				
STATION	CRIMES AGAINST PERSONS	CRIMES AGAINST PROPERTY	CRIMES AGAINST SOCIETY	FYTD
LAX/Metro Transit Center				
Aviation/Century	0	0	0	0
Aviation/Imperial	0	2	3	32
Hawthorne/Lennox	0	1	1	16
Crenshaw	3	0	1	21
Vermont/Athens	1	0	0	10
Harbor Fwy	0	0	1	70
Avalon	0	0	1	26
Willowbrook/Rosa Parks	4	0	0	35
Long Beach Bl	1	0	0	50
Lakewood Bl	3	0	0	9
Norwalk	2	1	0	26
Total	14	4	7	295

ARRESTS			
AGENCY	LAPD	LASD	FYTD
Felony	0	9	82
Misdemeanor	6	9	272
TOTAL	6	18	354

CITATIONS			
AGENCY	LAPD	LASD	FYTD
Other Citations	5	14	346
Vehicle Code Citations	0	1	11
TOTAL	5	15	357

CALLS FOR SERVICE			
AGENCY	LAPD	LASD	FYTD
Routine	Currently Unavailable	58	2,041
Priority	Currently Unavailable	23	386
Emergency	Currently Unavailable	6	37
TOTAL	0	87	2,464

DISPATCHED VS. PROACTIVE		
AGENCY	LAPD	LASD
Dispatched	26%	N/C
Proactive	74%	N/C
TOTAL	100%	0%

PERCENTAGE OF TIME SPENT ON THE RAIL SYSTEM	
Green Line-LAPD	89%
Green Line-LASD	N/C

LEGEND	
Los Angeles Police Department	
Los Angeles County Sheriff's Department	

E LINE

ATTACHMENT G

MONTHLY UPDATE ON TRANSIT POLICING PERFORMANCE - APRIL 2025

REPORTED CRIME			
CRIMES AGAINST PERSONS	LAPD	LASD	FYTD
Homicide	0	0	0
Rape	0	0	2
Robbery	6	3	39
Aggravated Assault	2	1	27
Aggravated Assault on Operator	0	0	0
Battery	2	2	74
Battery Rail Operator	0	0	0
Sex Offenses	1	0	7
SUB-TOTAL	11	6	149
CRIMES AGAINST PROPERTY	LAPD	LASD	FYTD
Burglary	0	0	3
Larceny	4	3	58
Bike Theft	0	0	0
Motor Vehicle Theft	0	0	1
Arson	0	0	0
Vandalism	2	0	14
SUB-TOTAL	6	3	76
CRIMES AGAINST SOCIETY	LAPD	LASD	FYTD
Weapons	0	1	10
Narcotics	3	3	53
Trespassing	18	1	377
SUB-TOTAL	21	5	440
TOTAL	38	14	665

CRIMES PER STATION				
STATION	CRIMES AGAINST PERSONS	CRIMES AGAINST PROPERTY	CRIMES AGAINST SOCIETY	FYTD
Atlantic	0	0	0	5
East LA Civic Ctr	0	0	0	3
Maravilla	0	1	2	5
Indiana (both LAPD & LASD)	0	0	1	29
Soto	0	1	4	26
Mariachi Plaza	0	0	0	21
Pico/Aliso	0	0	0	8
Little Tokyo/Arts Dist	0	0	0	3
Historic Broadway	0	0	0	0
Grand Av Arts/Bunker Hill	0	0	0	0
7th St/Metro Ctr	0	0	0	2
Pico	1	0	1	10
LATTC/Ortho Institute	0	0	1	89
Jefferson/USC	1	0	0	11
Expo Park/USC	0	1	0	16
Expo/Vermont	0	0	5	48
Expo/Western	3	1	5	67
Expo/Crenshaw	1	3	1	80
Farmdale	1	0	0	20
Expo/La Brea	0	0	2	48
La Cienega/Jefferson	0	0	0	93
Culver City	1	2	0	7
Palms	2	0	0	7
Westwood/Rancho Park	1	0	0	4
Expo/Sepulveda	1	0	1	9
Expo/Bundy	0	0	0	7
26th St/Bergamot	1	0	1	9
17th St/SMC	1	0	0	8
Downtown Santa Monica	3	0	2	30
Expo Line Rail Yard	0	0	0	0
Total	17	9	26	665

ARRESTS			
AGENCY	LAPD	LASD	FYTD
Felony	5	3	81
Misdemeanor	22	8	559
TOTAL	27	11	640

CITATIONS			
AGENCY	LAPD	LASD	FYTD
Other Citations	23	7	740
Vehicle Code Citations	2	0	16
TOTAL	25	7	756

CALLS FOR SERVICE			
AGENCY	LAPD	LASD	FYTD
Routine	Currently Unavailable	78	1,371
Priority	Currently Unavailable	16	223
Emergency	Currently Unavailable	3	24
TOTAL	0	97	1,618

DISPATCHED VS. PROACTIVE		
AGENCY	LAPD	LASD
Dispatched	29%	N/C
Proactive	71%	N/C
TOTAL	100%	0%

PERCENTAGE OF TIME SPENT ON THE RAIL SYSTEM	
Expo Line-LAPD	83%
Expo Line-LASD	N/C

GRADE CROSSING OPERATIONS			
LOCATION	LAPD	LASD	FYTD
East Los Angeles	0	3	68
Figuerroa St	0	0	0
Exposition Blvd	127	0	1,421
Culver City	0	0	104
Santa Monica	0	46	825
TOTAL	127	49	2,418

LEGEND	
Los Angeles Police Department	
Los Angeles County Sheriff's Department	

G LINE (ORANGE)

ATTACHMENT G

MONTHLY UPDATE ON TRANSIT POLICING PERFORMANCE - APRIL 2025

REPORTED CRIME		
CRIMES AGAINST PERSONS	LAPD	FYTD
Homicide	0	0
Rape	0	0
Robbery	0	11
Aggravated Assault	0	14
Aggravated Assault on Operator	0	0
Battery	2	25
Battery Bus Operator	0	0
Sex Offenses	0	1
SUB-TOTAL	2	51
CRIMES AGAINST PROPERTY	LAPD	FYTD
Burglary	0	0
Larceny	0	7
Bike Theft	0	0
Motor Vehicle Theft	0	0
Arson	0	0
Vandalism	0	9
SUB-TOTAL	0	16
CRIMES AGAINST SOCIETY	LAPD	FYTD
Weapons	1	5
Narcotics	8	52
Trespassing	3	29
SUB-TOTAL	12	86
TOTAL	14	153

ARRESTS		
AGENCY	LAPD	FYTD
Felony	6	42
Misdemeanor	10	69
TOTAL	16	111

CITATIONS		
AGENCY	LAPD	FYTD
Other Citations	8	142
Vehicle Code Citations	9	177
TOTAL	17	319

CALLS FOR SERVICE		
AGENCY	LAPD	FYTD
Routine	Currently Unavailable	0
Priority	Currently Unavailable	0
Emergency	Currently Unavailable	0
TOTAL	0	0

DISPATCHED VS. PROACTIVE		
AGENCY	LAPD	
Dispatched	24%	
Proactive	76%	
TOTAL	100%	

CRIMES PER STATION				
STATION	CRIMES AGAINST PERSONS	CRIMES AGAINST PROPERTY	CRIMES AGAINST SOCIETY	FYTD
North Hollywood	0	0	2	23
Laurel Canyon	0	0	0	5
Valley College	0	0	0	2
Woodman	0	0	0	7
Van Nuys	0	0	0	8
Sepulveda	0	0	1	3
Woodley	0	0	0	1
Balboa	0	0	0	2
Reseda	0	0	7	47
Tampa	1	0	0	4
Pierce College	0	0	0	0
De Soto	0	0	0	3
Canoga	0	0	0	5
Warner Center	0	0	0	0
Sherman Way	0	0	0	7
Roscoe	0	0	0	2
Nordhoff	0	0	1	2
Chatsworth	1	0	1	32
Total	2	0	12	153

PERCENTAGE OF TIME SPENT ON THE BUS SYSTEM	
Orange Line- LAPD	86%

LEGEND
Los Angeles Police Department

J LINE (SILVER)

ATTACHMENT G

MONTHLY UPDATE ON TRANSIT POLICING PERFORMANCE - APRIL 2025

REPORTED CRIME			
CRIMES AGAINST PERSONS	LAPD	LASD	FYTD
Homicide	0	0	0
Rape	0	0	0
Robbery	2	0	7
Aggravated Assault	4	0	11
Aggravated Assault on Operator	0	0	0
Battery	0	0	8
Battery Bus Operator	0	0	2
Sex Offenses	0	0	2
SUB-TOTAL	6	0	30
CRIMES AGAINST PROPERTY	LAPD	LASD	FYTD
Burglary	0	0	0
Larceny	1	0	5
Bike Theft	0	0	0
Motor Vehicle Theft	1	0	1
Arson	0	0	0
Vandalism	0	0	2
SUB-TOTAL	2	0	8
CRIMES AGAINST SOCIETY	LAPD	LASD	FYTD
Weapons	0	0	2
Narcotics	2	0	12
Trespassing	0	0	33
SUB-TOTAL	2	0	47
TOTAL	10	0	85

CRIMES PER STATION				
STATION	CRIMES AGAINST PERSONS	CRIMES AGAINST PROPERTY	CRIMES AGAINST SOCIETY	FYTD
El Monte	0	0	0	3
Cal State LA	0	0	0	0
LAC/USC Medical Ctr	0	0	0	2
Alameda	1	0	0	1
Downtown	0	0	0	1
37th St/USC	0	0	0	7
Slauson	1	0	0	13
Manchester	1	0	0	15
Harbor Fwy	2	0	1	21
Rosecrans	0	0	0	0
Harbor Gateway Transit Ctr	0	1	1	15
Carson	0	0	0	0
PCH	0	0	0	0
San Pedro/Beacon	1	1	0	3
Total	6	2	2	81

ARRESTS			
AGENCY	LAPD	LASD	FYTD
Felony	3	0	8
Misdemeanor	3	2	42
TOTAL	6	2	50

CITATIONS			
AGENCY	LAPD	LASD	FYTD
Other Citations	2	0	86
Vehicle Code Citations	10	0	40
TOTAL	12	0	126

CALLS FOR SERVICE			
AGENCY	LAPD	LASD	FYTD
Routine	Currently Unavailable	7	59
Priority	Currently Unavailable	3	20
Emergency	Currently Unavailable	0	1
TOTAL	0	10	80

DISPATCHED VS. PROACTIVE		
AGENCY	LAPD	LASD
Dispatched	12%	9%
Proactive	88%	91%
TOTAL	100%	100%

PERCENTAGE OF TIME SPENT ON THE BUS SYSTEM	
Silver Line- LAPD	88%
Silver Line- LASD	91%

LEGEND	
Los Angeles Police Department	
Los Angeles County Sheriff's Department	

K LINE

ATTACHMENT G

MONTHLY UPDATE ON TRANSIT POLICING PERFORMANCE - APRIL 2025

REPORTED CRIME			
CRIMES AGAINST PERSONS	LAPD	LASD	FYTD
Homicide	0	0	0
Rape	0	0	0
Robbery	0	1	5
Aggravated Assault	1	0	5
Aggravated Assault on Operator	0	0	0
Battery	0	2	18
Battery Bus Operator	0	0	0
Sex Offenses	0	0	1
SUB-TOTAL	1	3	29
CRIMES AGAINST PROPERTY	LAPD	LASD	FYTD
Burglary	0	0	0
Larceny	0	2	12
Bike Theft	0	0	0
Motor Vehicle Theft	0	0	0
Arson	0	0	1
Vandalism	0	0	4
SUB-TOTAL	0	2	17
CRIMES AGAINST SOCIETY	LAPD	LASD	FYTD
Weapons	0	0	3
Narcotics	0	1	6
Trespassing	3	0	26
SUB-TOTAL	3	1	35
TOTAL	4	6	81

CRIMES PER STATION				
STATION	CRIMES AGAINST PERSONS	CRIMES AGAINST PROPERTY	CRIMES AGAINST SOCIETY	FYTD
Expo / Crenshaw	0	0	0	20
Martin Luther King Jr Station	1	0	0	8
Leimert Park Station	0	0	0	5
Hyde Park Station	0	0	0	9
Fairview Heights Station	3	0	0	4
Downtown Inglewood Station	0	0	0	2
Westchester / Veterans Station	0	0	0	4
LAX/Metro Transit Center				

ARRESTS			
AGENCY	LAPD	LASD	FYTD
Felony	0	5	15
Misdemeanor	4	2	54
TOTAL	4	7	69

CITATIONS			
AGENCY	LAPD	LASD	FYTD
Other Citations	2	2	49
Vehicle Code Citations	0	3	7
TOTAL	2	5	56

CALLS FOR SERVICE			
AGENCY	LAPD	LASD	FYTD
Routine	Currently Unavailable	71	1,092
Priority	Currently Unavailable	3	60
Emergency	Currently Unavailable	0	4
TOTAL	0	74	1,156

DISPATCHED VS. PROACTIVE		
AGENCY	LAPD	LASD
Dispatched	32%	N/C
Proactive	68%	N/C
TOTAL	100%	0%

PERCENTAGE OF TIME SPENT ON THE RAIL SYSTEM	
K Line - LAPD	84%
K Line - LASD	N/C

LEGEND	
Los Angeles Police Department	
Los Angeles County Sheriff's Department	

BUS PATROL

ATTACHMENT G
MONTHLY UPDATE ON TRANSIT POLICING PERFORMANCE - APRIL 2025

REPORTED CRIME			
CRIMES AGAINST PERSONS	LAPD	LASD	FYTD
Homicide	0	0	1
Rape	1	1	2
Robbery	6	0	85
Aggravated Assault	0	5	123
Aggravated Assault on Operator	2	0	26
Battery	23	5	280
Battery Bus Operator	4	1	71
Sex Offenses	1	2	37
SUB-TOTAL	37	14	625
CRIMES AGAINST PROPERTY	LAPD	LASD	FYTD
Burglary	0	0	1
Larceny	8	4	129
Bike Theft	0	0	0
Motor Vehicle Theft	0	1	2
Arson	0	0	0
Vandalism	11	3	110
SUB-TOTAL	19	8	242
CRIMES AGAINST SOCIETY	LAPD	LASD	FYTD
Weapons	1	1	33
Narcotics	1	2	102
Trespassing	2	0	29
SUB-TOTAL	4	3	164
TOTAL	60	25	1,031

LASD's Crimes per Sector		
Sector		FYTD
Westside	7	34
San Fernando	0	7
San Gabriel Valley	5	52
Gateway Cities	6	77
South Bay	7	110
Total	25	280

LAPD's Crimes per Sector		
Sector		FYTD
Valley Bureau		
Van Nuys	1	17
West Valley	1	21
North Hollywood	1	31
Foothill	0	12
Devonshire	1	10
Mission	4	21
Topanga	2	7
Central Bureau		
Central	3	134
Rampart	3	41
Hollenbeck	7	25
Northeast	4	24
Newton	5	56
West Bureau		
Hollywood	2	36
Wilshire	1	34
West LA	1	26
Pacific	0	13
Olympic	8	62
Southwest Bureau		
Southwest	8	55
Harbor	0	13
77th Street	7	83
Southeast	1	29
Total	60	750

ARRESTS			
AGENCY	LAPD	LASD	FYTD
Felony	2	6	190
Misdemeanor	3	22	422
TOTAL	5	28	612

CITATIONS			
AGENCY	LAPD	LASD	FYTD
Other Citations	38	27	1,334
Vehicle Code Citations	131	9	1,495
TOTAL	169	36	2,829

CALLS FOR SERVICE			
AGENCY	LAPD	LASD	FYTD
Routine	Currently Unavailable	204	1,773
Priority	Currently Unavailable	83	946
Emergency	Currently Unavailable	7	40
TOTAL	0	294	2,759

DISPATCHED VS. PROACTIVE		
AGENCY	LAPD	LASD
Dispatched	0%	4%
Proactive	0%	96%
TOTAL	0%	100%

PERCENTAGE OF TIME SPENT ON THE BUS SYSTEM	
LAPD BUS	0%
LASD BUS	91%

LEGEND	
Los Angeles Police Department	
Los Angeles County Sheriff's Department	

UNION STATION

ATTACHMENT G

MONTHLY UPDATE ON TRANSIT POLICING PERFORMANCE - APRIL 2025

REPORTED CRIME		
CRIMES AGAINST PERSONS	LAPD	FYTD
Homicide	0	0
Rape	0	2
Robbery	3	5
Aggravated Assault	2	14
Aggravated Assault on Operator	0	0
Battery	1	41
Battery Rail Operator	0	0
Sex Offenses	0	5
SUB-TOTAL	6	67
CRIMES AGAINST PROPERTY	LAPD	FYTD
Burglary	0	0
Larceny	4	23
Bike Theft	0	0
Motor Vehicle Theft	0	1
Arson	0	0
Vandalism	3	15
SUB-TOTAL	7	39
CRIMES AGAINST SOCIETY	LAPD	FYTD
Weapons	0	1
Narcotics	0	10
Trespassing	5	41
SUB-TOTAL	5	52
TOTAL	18	158

ARRESTS		
AGENCY	LAPD	FYTD
Felony	2	33
Misdemeanor	6	55
TOTAL	8	88

CITATIONS		
AGENCY	LAPD	FYTD
Other Citations	14	690
Vehicle Code Citations	0	7
TOTAL	14	697

CALLS FOR SERVICE		
AGENCY	LAPD	FYTD
Routine	Currently Unavailable	0
Priority	Currently Unavailable	0
Emergency	Currently Unavailable	0
TOTAL	0	0

DISPATCHED VS. PROACTIVE	
AGENCY	LAPD
Dispatched	25%
Proactive	75%
TOTAL	100%

PERCENTAGE OF TIME SPENT ON THE SYSTEM	
Union Station	84%

LEGEND	
Los Angeles Police Department	

7TH & METRO STATION

ATTACHMENT G

MONTHLY UPDATE ON TRANSIT POLICING PERFORMANCE - APRIL 2025

REPORTED CRIME		
CRIMES AGAINST PERSONS	LAPD	FYTD
Homicide	0	0
Rape	0	0
Robbery	0	1
Aggravated Assault	0	0
Aggravated Assault on Operator	0	0
Battery	0	1
Battery Rail Operator	0	0
Sex Offenses	0	0
SUB-TOTAL	0	2
CRIMES AGAINST PROPERTY	LAPD	FYTD
Burglary	0	0
Larceny	0	0
Bike Theft	0	0
Motor Vehicle Theft	0	0
Arson	0	0
Vandalism	0	0
SUB-TOTAL	0	0
CRIMES AGAINST SOCIETY	LAPD	FYTD
Weapons	0	0
Narcotics	0	1
Trespassing	0	0
SUB-TOTAL	0	1
TOTAL	0	3

ARRESTS		
AGENCY	LAPD	FYTD
Felony	0	1
Misdemeanor	0	0
TOTAL	0	1

CITATIONS		
AGENCY	LAPD	FYTD
Other Citations	0	0
Vehicle Code Citations	0	0
TOTAL	0	0

CALLS FOR SERVICE		
AGENCY	LAPD	FYTD
Routine	Currently Unavailable	0
Priority	Currently Unavailable	0
Emergency	Currently Unavailable	0
TOTAL	0	0

DISPATCHED VS. PROACTIVE	
AGENCY	LAPD
Dispatched	28%
Proactive	72%
TOTAL	100%

PERCENTAGE OF TIME SPENT ON THE SYSTEM	
7th & Metro Station	81%

LEGEND	
Los Angeles Police Department	



SYSTEM SECURITY & LAW ENFORCEMENT

Attachment G

Sexual Crimes / Harassment Calls for Service April 2025

Calls related to sexual crimes/harassment are routed through System Security & Law Enforcement Operations Center, which then transfers the caller to a free 24/7 hotline — Center for the Pacific Asian Family Inc., and Sister Family Services — that can provide more directed counseling. Between April 1 and April 30, Metro Transit Security, LAPD and LASD received seven (7) incidents and referred all victims of sexual crimes/harassment to the above free hotlines.

Incident Type & Totals						
	Apr 25	Mar 25	% Change	Apr 25	Apr 24	% Change
Sexual Harassment	1	0	100.0%	1	0	100.0%
Sexual Battery	1	10	-90.0%	1	6	-83.3%
Lewd Conduct	2	2	0.0%	2	1	100.0%
Indecent Exposure	1	3	-66.7%	1	5	-80.0%
Rape	2*	0	200.0%	2*	0	200.0%
TOTAL	7	15	-53.3%	7	12	-41.7%

**Note that one of the rape incidents involves a party that has previously reported the same type of rape incident three times.*

Counseling Information Provided	
	April 2025
Yes	7
No - If no, why?	0
Gone On Arrival	0
Did Not Have Info	0
Telephonic Report	0
Not Offered	0
Refused	0
Officer Witnessed Incident	0
TOTAL	7