

# **Measure M Independent Taxpayer Oversight Committee**

## **Transit Projects Update October 3, 2024**

Allison Yoh

Deputy Chief Planning Officer (Interim)



# Measure M Transit Projects



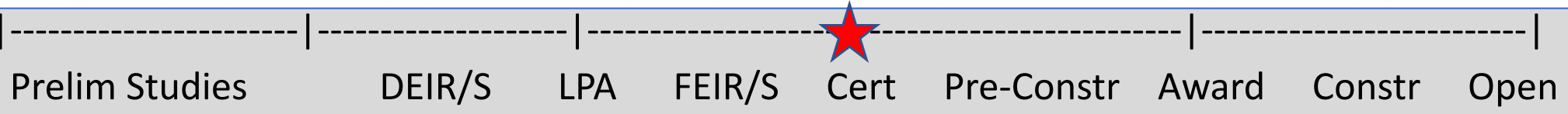
## > Major Pillar Projects

- (1) Southeast Gateway Line
- (2) C Line Extension to Torrance
- (3) Sepulveda Transit Corridor
- (4) Eastside Transit Corridor Phase 2

## > Other Projects in Planning

- Vermont Transit Corridor
- K Line Northern Extension

# Southeast Gateway Line



Current Phase	Most Recent Cost Estimate
EIR Certified EIS per FTA	IOS - \$7.1B (YOES, forecast completion 2035)

## Recent Activities

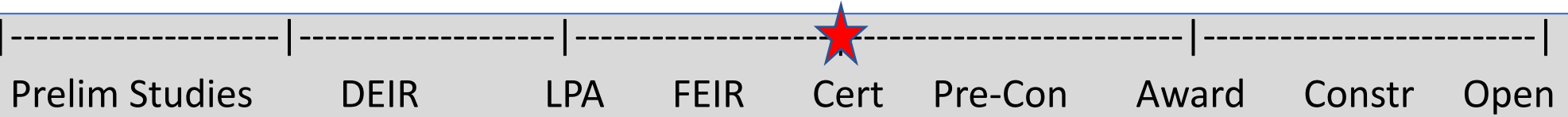
- April 2024: Board certification of Final EIR (CEQA action), approval of FLM plan, release of CMGC RFP
- June/July 2024: Development of RFP for ROW consultant to the bench and work with cities on 3% contribution
- August: Record of Decision (ROD) from FTA (NEPA Action)

## Next Actions

- Continue monthly coordination with FTA Project Management Oversight Committee (PMOC)
- Winter 2024: Completion of New Starts Project Development activities and request to enter Project Engineering and request a CIG rating
- Fall/Winter 2024: Present Slauson/A Line to LAUS study findings to the Board



# Eastside Transit Corridor Phase 2



## Current Phase

## Most Recent Cost Estimate

EIR Certified  
(NEPA TBD)

IOS - \$7.9B  
(2031\$, midpoint of construction)

## Recent Activities

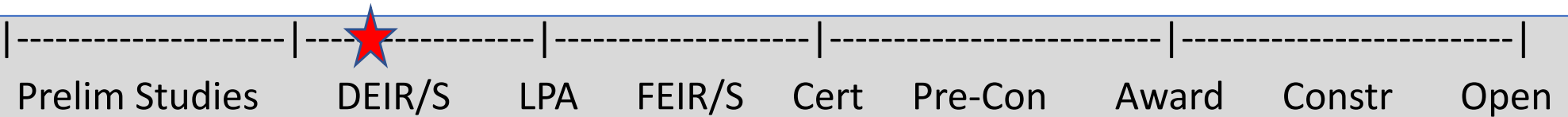
- May 2024: Board certified EIR (CEQA action)
- Coordination with City of Montebello and stakeholders on right-sizing of MSF
- Ongoing coordination with corridor cities on 3% contribution, FLM, co-operative agreements, geotechnical investigations and utilities
- Sept 2024: Board action on contract modification for 30% design (Preliminary Engineering)



## Next Actions

- Continue to coordinate with FTA on NEPA and entry into Project Development phase
- Continue developing project schedule and project delivery scenarios

# Sepulveda Transit Corridor



Current Phase	Most Recent Cost Estimate
Draft EIR	\$5.7B (2015\$)

## Recent Activities

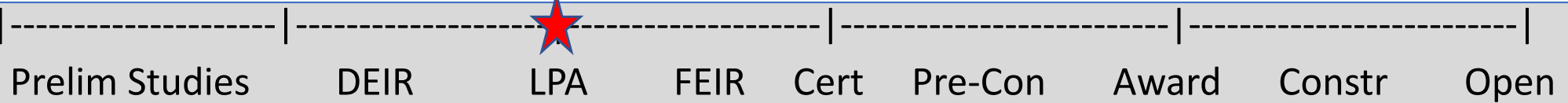
- Screening out 1 of 6 alternatives
- Continuing progress on environmental technical analysis supporting Draft EIR
- Development of cost and funding information

## Next Actions

- Continue preparation of Draft EIR
- Continue development of outreach plan
- Draft EIR release anticipated early 2025



# C (Green) Line Extension to Torrance



Current Phase	Most Recent Cost Estimate
Final EIR	\$2.2B (2031\$, midpoint of construction)

## Recent Activities

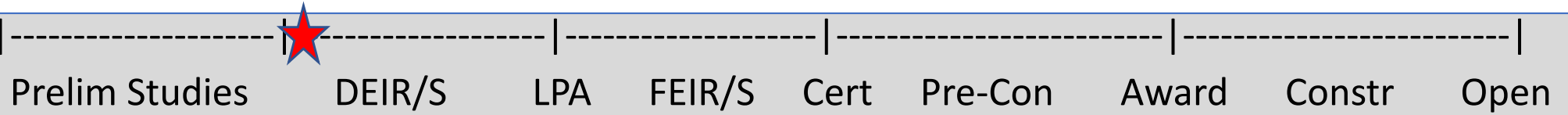
- May: Board selection of LPA
- Preparation of Final EIR under CEQA
- Completion of studies to respond to public comments on ROW and Hawthorne Blvd alignments
- Development of communications plan

## Next Actions

- Continue to prepare Final EIR
- Conduct studies to respond to public comments on ROW and Hawthorne Blvd alignments
- Continue to refine cost estimates and funding plan for Locally Preferred Alternative (LPA)



# Vermont Transit Corridor



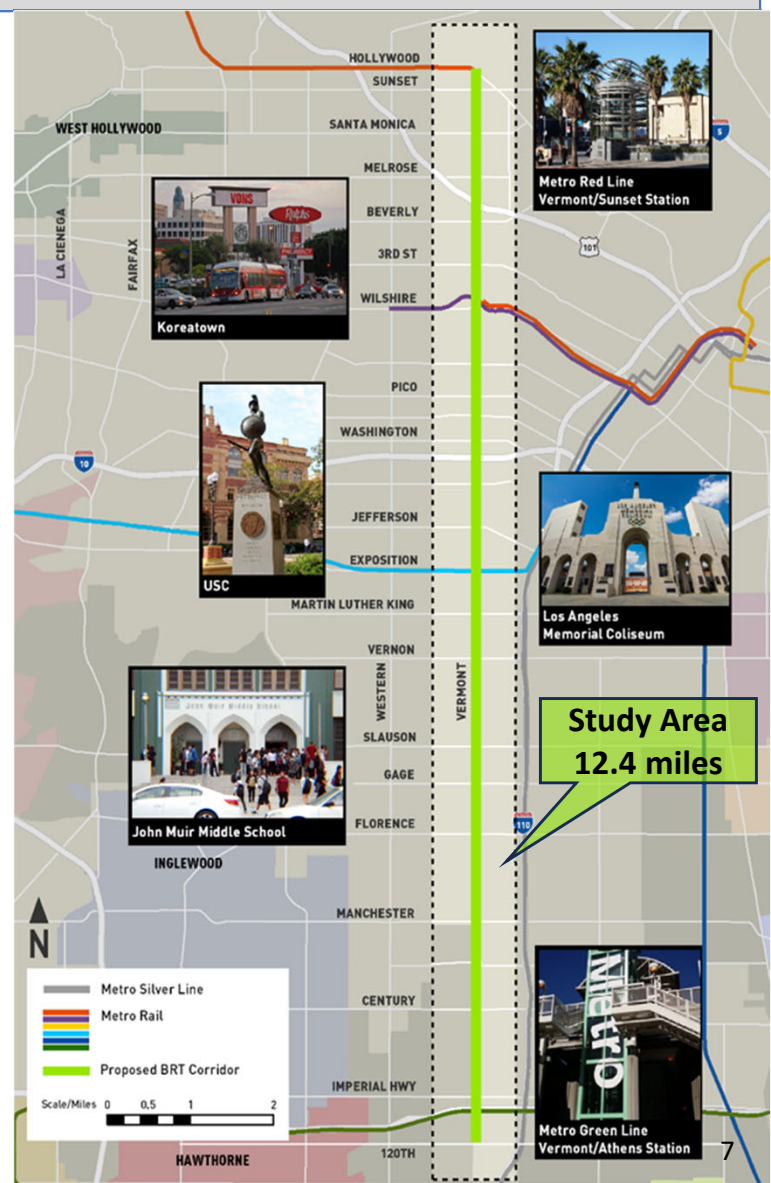
Current Phase	Most Recent Cost Estimate
Environmental	\$425M (2015\$)

## Recent Activities

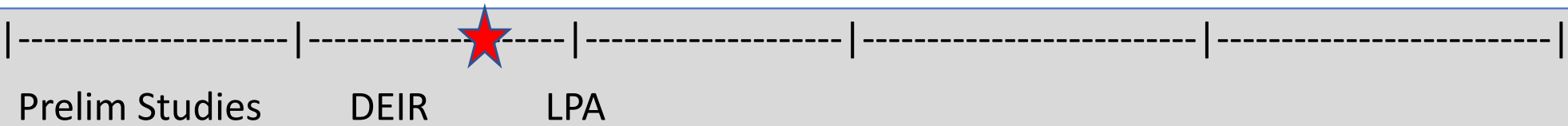
- May/June 2024 – Held 7 design workshops
  - Received community input on BRT and station design
  - Over 600 attendees
- Meetings with elected officials, Neighborhood Councils, CBOs, and other key stakeholders on corridor
- Ongoing project coordination with both City and County of LA

## Next Actions

- Preparation of materials for abbreviated CEQA review. Prepare business case for the Project.
- Fall 2024 – Develop Advanced Conceptual Engineering (ACE) drawings



# K Line (Crenshaw) Northern Extension



**Current Phase**      **Most Recent Cost Estimate**

EIR

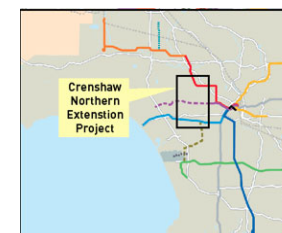
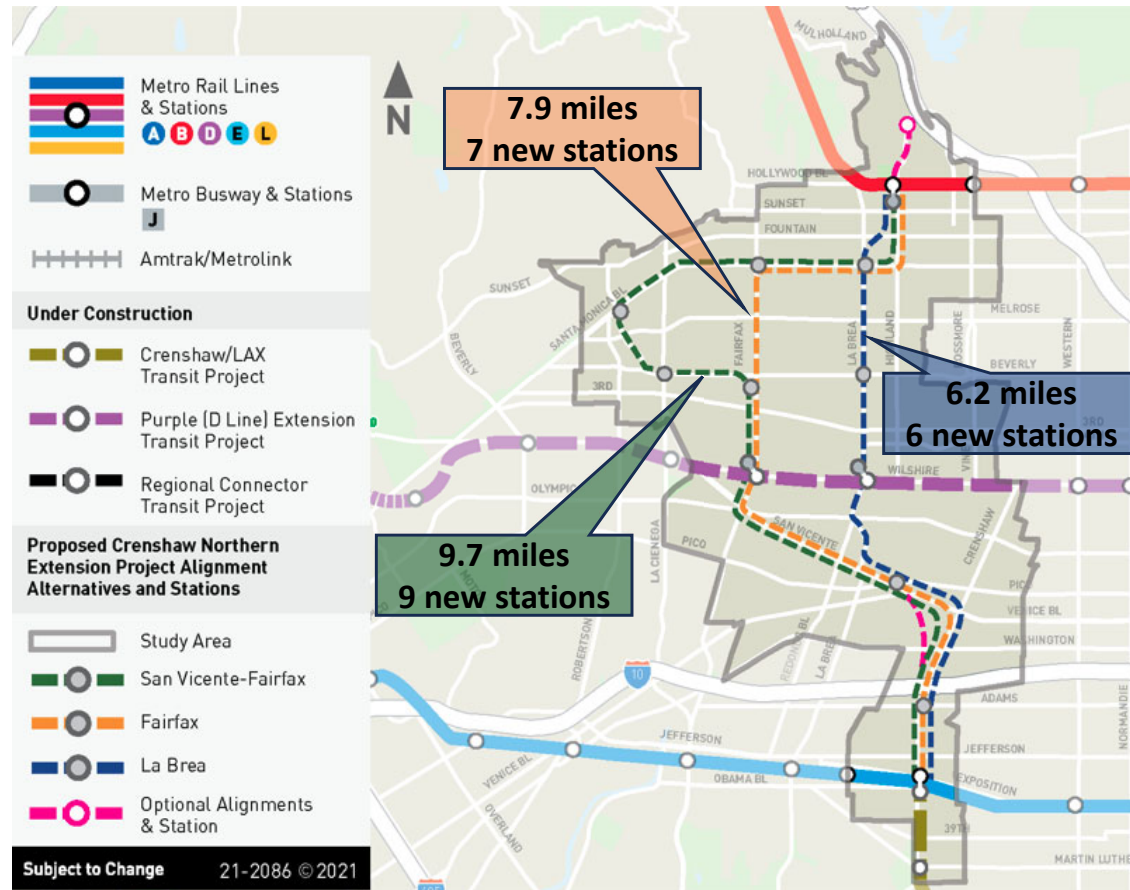
\$2.24B (2015\$)

## Recent Activities

- July 23, 2024: Draft EIR released for public review and comment
- Aug 10, 13, 15: Public hearings
  - 2 in-person, 1 virtual
  - Over 300 attendees
  - Themes: support for project, concerns about tunneling, historic homes
  - Lafayette Square additional meeting

## Next Actions

- Sept 20: End 60-day comment period
- Develop staff recommendation for LPA based on environmental analyses, community input, project benefits, cost, funding





# High Desert Corridor Project Joint Powers Authority

# High Desert Corridor (Request from MMITOC Meeting of June 5, 2024)

- Metro's FY25 annual budget includes support for
  - Service Development Plan (Metro)
  - Environmental analysis (HDC JPA)
  - Technical reviews of CHSRA and Brightline engineering data (HDC JPA)
- Metro is leading the Service Development Plan in partnership with HDC and the Federal Railroad Administration (FRA)
- There is no private sector nexus currently

