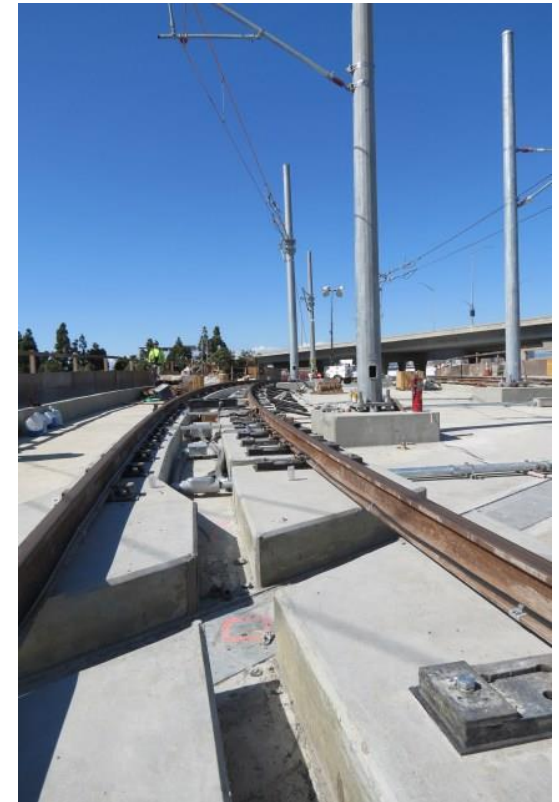


Metro Green Line & Crenshaw/LAX Line Tie-In Project Completion Update

Project Update

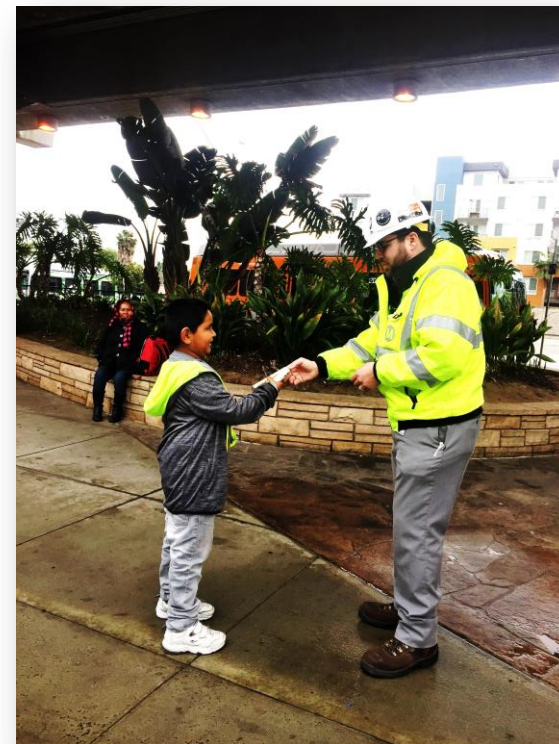
Overview

- **Construction work to connect and integrate the Green Line and the Crenshaw/LAX Line was completed nearly one week ahead of schedule.**
- **As a result, the five Green Line stations listed that were closed since January 26, 2018 reopened on Sunday, April 1, 2018:**
 - **Aviation/LAX**
 - **Mariposa**
 - **El Segundo**
 - **Douglas**
 - **Redondo Beach**



Service

- During the 65-day closure, trains between Norwalk and Hawthorne/Lennox ran regular service
- Free bus shuttle service replaced rail service affected five (5) stations
 - Bus shuttle headsign and bus stop information was clear, visible & augmented by announcements
 - Staff was onsite to support customers
- LAX G-Shuttle, Santa Monica BBB Route 3/R3, and Metro Line 625 were temporarily relocated from Aviation/LAX Station to Hawthorne/Lennox Station
- Metro Contracted Bus Services extended Line 625 on Imperial Hwy to meet Green Line trains at Hawthorne/Lennox Station
- Metro's Parking Management Program for the Green Line Stations (Norwalk, Lakewood, Aviation and Crenshaw) was put on hold until June 2018



Green Line Shuttles carried approximately 85% of normal ridership at the 5 closed stations.

Work Accomplished - Construction

- **New Crenshaw/LAX infrastructure was successfully installed by contractor Walsh-Shea Corridor Constructors to connect and integrate with the Green Line west of Aviation Station**
- **Tie-in activities included:**
 - **Civil – Demolition and reconstruction of the track plinths to accommodate track configuration**
 - **Overhead Catenary System – Poles and wires for power**
 - **Signal – Modifications to the Green Line track circuits**



Work Accomplished - Metro

Maintenance of Way

- Replaced OCS at multiple locations
- Replaced Cameras and GTELS from Redondo Beach to Aviation Station
- Completed Rail Grinding
- Transposed Rail and replaced Ties
- Replaced switch machines at Redondo Beach and the Yard Entrance



Facilities Maintenance

- Improved corroded ROW Infrastructure from Redondo Beach to Aviation Station
- Replaced Station and ROW Signage
- Replaced Platform Gap Fillers
- Improved Norwalk Tail Track to Allow Maintenance of Rail Vehicles at this Location



Vehicles

- Software Compatibility and Testing of Two Car Types
- Train Control Software Modifications Allowing Trains to Run on the Tie-In Segment

Rail Fleet Service

- Regular servicing, maintenance, and overnight storage of Green Line cars were temporarily located at Norwalk Station

Operations used the Green Line closure by completing track, signal and other maintenance work along the closed right-of-way and stations to avoid further disruptions and ensure a more reliable commute.

Project Highlights

- ✓ **Implementation of a comprehensive public outreach and communications plan to ensure customers were informed during all project stages**
- ✓ **Ridership was maintained throughout the 5 closed Green Line stations due to internal and external planning and partnership efforts**
- ✓ **Completion of Operations related activities**
- ✓ **Completion of Crenshaw/LAX Project construction ahead of schedule**
- ✓ **Preparation for final cut-over targeted for Fall 2018**

