

**Item XX**

# Pocket Gate Pilot Project



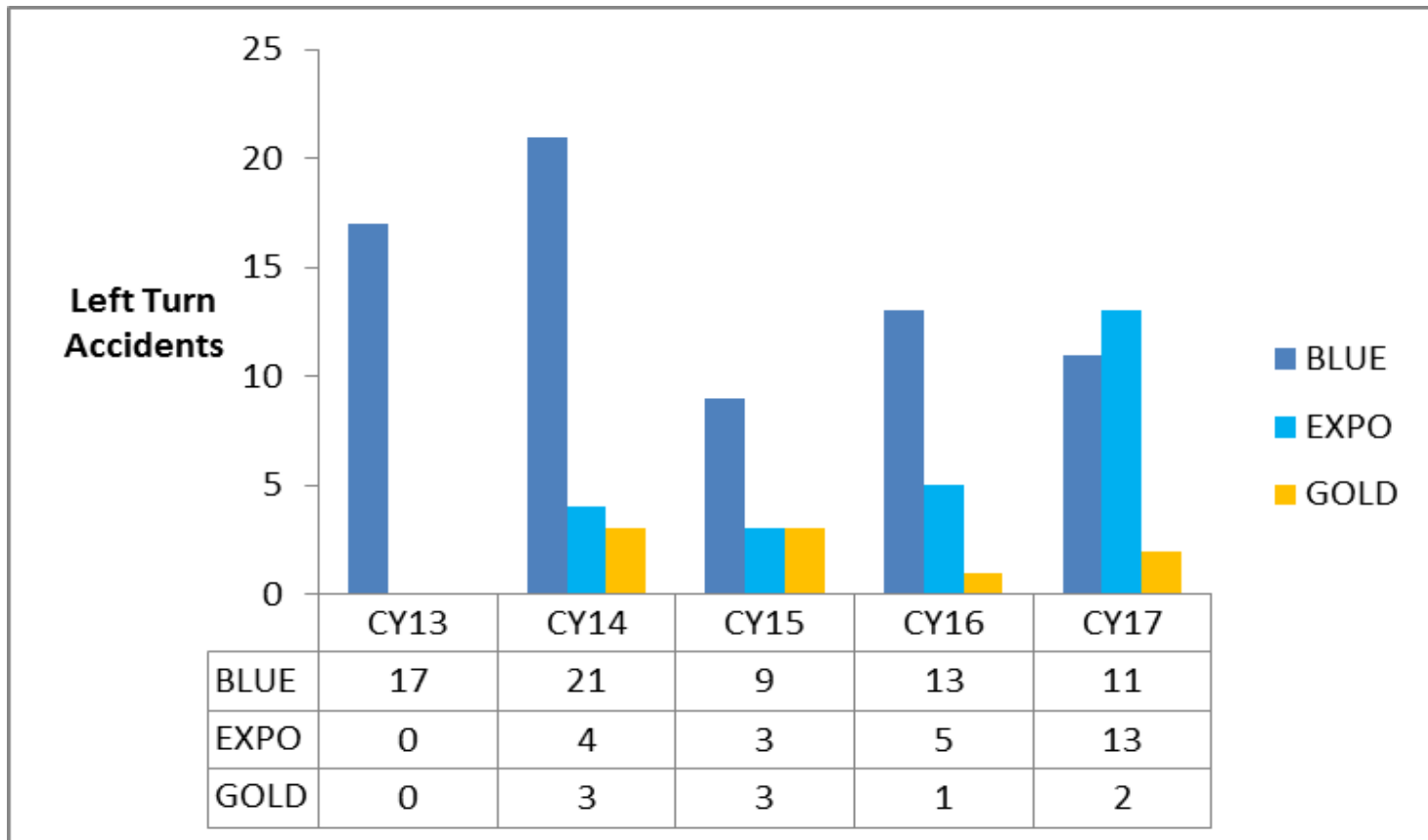
System Safety, Security & Operations Committee

March 15, 2018

# THE RESULT OF UNSAFE BEHAVIORS



# METRO'S TREND OF LEFT TURN COLLISIONS



**Metro**

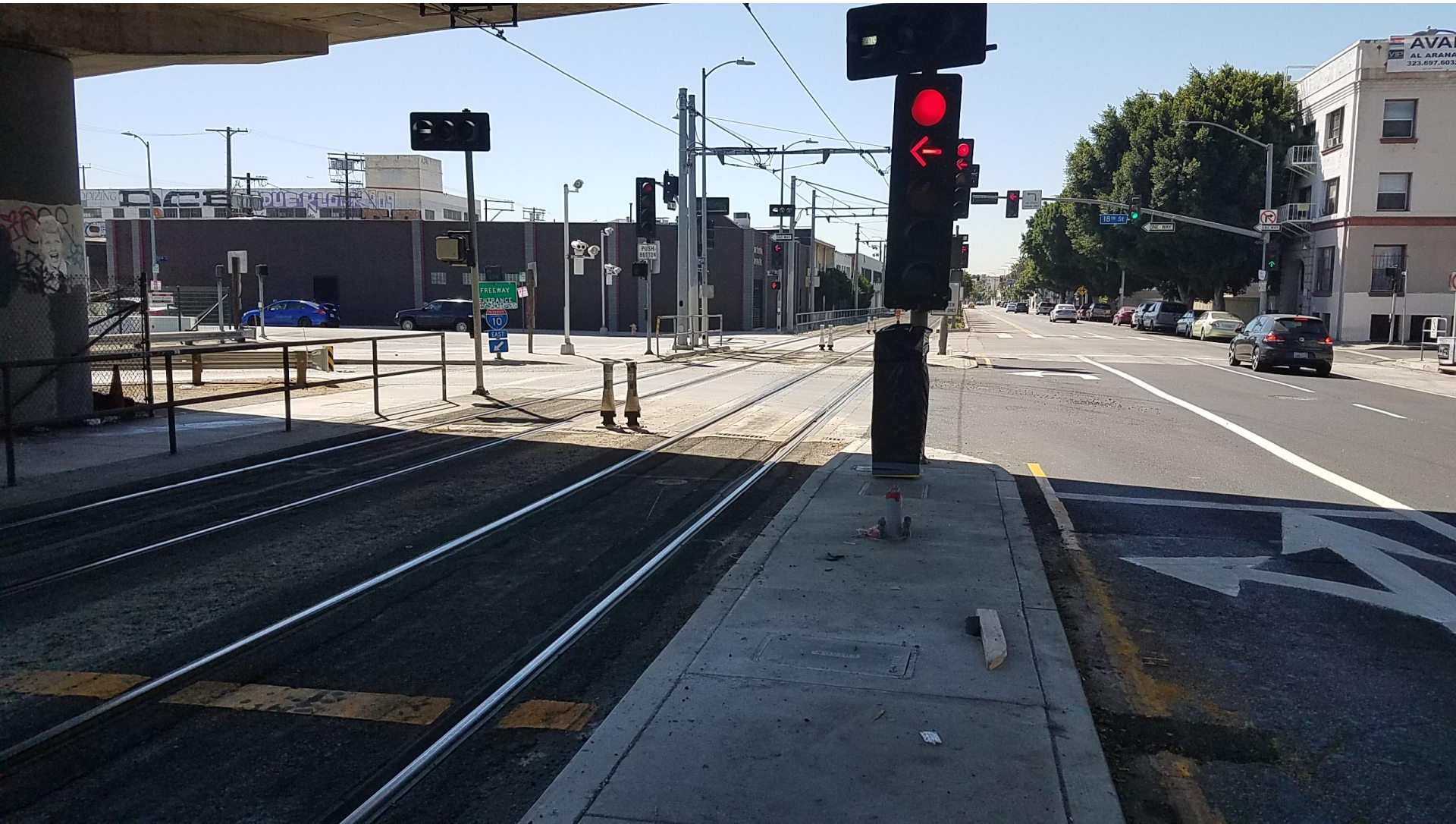
# THE LEFT TURN HAZARD

- “Street-running” crossings (non-gated)
- Tracks in Median or Side
- Left Turn Lane Parallel to Tracks
- Trains approach from ‘behind’ motorist in left turn lane



# THE LEFT TURN HAZARD

## Side Alignment



# THE PROBLEM & THE CHALLENGE

- Disregard for traffic signals
- Disregard for warning signs
- “Follow the Leader” syndrome
- Ensuring compliance to warning signs – by all motorists, at all times
- Controlling the unsafe & illegal behavior of motorists



# GATE OPERATION VIDEO



**Metro**

# PILOT DATA

- Activated on October 24, 2017
- One collision – motorist made LT from #2 lane
- 6 incidents - 1 broken gate arm, 3 broken sensors, 1 misalignment, 1 broken screws
- Overall good compliance with limit line (75 motorists over 2 week period observed to go beyond LL)
- Positive feedback from operators and motorists
  - “Greatest thing ever” / “Need to add gates at other locations”
  - “What have you been waiting for to put up these gates”
  - “You guys really thought this out very well”



**Metro**



# PROJECT COST

- Retrofit on existing line
- One location
- Design - \$30K
- Parts – Gate Cabinet, arm, BBS - \$20K
- Labor/Permits – Conduit, cable, loops, restriping, repaving - \$200K
- On-going O & M costs – less than 10K/year

# NEXT STEPS

- Continue pilot for total 12 months
- Possible Expansion to other locations
- Update design criteria for future LRT lines
- Similar project for right turn signal violations on Orange Line
  - 4 pilot intersections
  - Design completion – April 2018
  - Construction – November 2018
  - 6 month data collection