

ATTACHMENT C  
Design Plan



IBI GROUP  
100 Wilshire Boulevard, Suite 100-3100  
Los Angeles, CA 90017, USA  
Tel: 213 789 0011 Fax: 213 789 0016  
ibigroup.com

**COPYRIGHT**  
This drawing has been prepared solely for the intended use. There are no restrictions on distribution for any project that has authorized IBI Group. A liability waiver is required for any other use. IBI Group is not responsible for any reproduction or use of this drawing without the written consent of IBI Group. IBI Group is not responsible for any reproduction or use of this drawing without the written consent of IBI Group. IBI Group is not responsible for any reproduction or use of this drawing without the written consent of IBI Group.

IBI Group, A California Partnership  
is a member of the IBI Group of Companies.

**CONSULTANT:**

**STATE SEAL:**

**NOT FOR  
CONSTRUCTION**

# HEADQUARTERS BUILDING PHYSICAL SECURITY IMPROVEMENTS

**PROJECT**  
HEADQUARTERS BUILDING  
EXTERIOR  
PHYSICAL SECURITY IMPROVEMENTS

SPECIFICATION NO.: 2003  
PROJECT NUMBER: 105168  
DRAWING NUMBER:  
APPROVAL SHEET NO.:

ADDRESS:  
700 N. ALAMEDA ST.  
LOS ANGELES, CA 90012

**REVISIONS:**

DELTA	TITLE	DATE	BY

**PROJECT TEAM**

**OWNER:**  
METROPOLITAN WATER DISTRICT  
700 N. ALAMEDA STREET  
LOS ANGELES, CA 90012  
PHONE: (213) 217-7080  
FAX: -  
CONTACT: MIKE CLAISSE  
PROJECT MANAGER

**ARCHITECT:**  
IBI GROUP  
315 W 9TH STREET  
LOS ANGELES, CA 90015  
PHONE: (213) 789-0011  
FAX: (213) 789-0016  
CONTACT: CRAIG ATKINSON  
ARCHITECT OF RECORD

**STRUCTURAL:**  
ABS CONSULTING  
300 COMMERCE DRIVE, SUITE 150  
IRVINE, CA 92602  
PHONE: (714) 734-2583  
FAX: -  
CONTACT: TRACY RICH  
PROJECT MANAGER

PM: GENERAL  
PE:  
SENIOR TECH. MGR.:  
DRAWN BY: AO  
SCALE:  
DATE: 04/22/21  
JOB NO.: 116535  
SHEET TITLE:

COVER SHEET

SHEET NO.:

G0000

CONFIDENTIAL METROPOLITAN INFORMATION







# ATTACHMENT C Design Plan

**NOT FOR  
CONSTRUCTION**

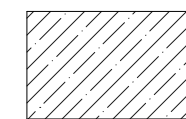
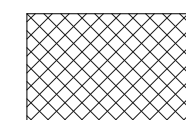
## 1000-GENERAL NOTES

1. PRIOR TO ANY UNDERGROUND SITE WORK, VERIFY LOCATION OF ALL EXISTING UTILITIES WITH UNDERGROUND SERVICE ALERT.
2. BOLLARDS SHALL BE SPACED EQUIDISTANTLY SO THAT THE CLEAR DISTANCE BETWEEN BOLLARDS DOES NOT EXCEED 40". CENTER OF BOLLARD SHALL BE NO MORE THAN 24" FROM CURB LINE AND INSTALLED SUCH THAT THE TOP SURFACE IS LEVEL.
3. MAINTAIN 3'-0" CLEAR AROUND ALL (E) FIRE HYDRANTS, TYP.

## 1000 - DEMOLITION KEYNOTES

- 1101 REMOVE (E) BOLLARD AND ALL ASSOCIATED FOOTINGS AND ANCHORS
- 1102 (E) SIGNAGE, REMOVE AND REPLACE AS REQUIRED FOR NEW WORK
- 1103 (E) FIRE HYDRANT TO REMAIN
- 1104 REMOVE (E) CONCRETE DOT MARKER
- 1105 REMOVE AND RELOCATE (E) MOVEABLE CONCRETE BOLLARD
- 1106 REMOVE AND RELOCATE (E) PLANTER, REFER TO SITE PLAN FOR NEW LOCATION
- 1107 (E) CONCRETE CURB TO REMAIN, SEE DETAILS 101A8002 AND 111A8002
- 1108 REMOVE (E) HARDSCAPE
- 1109 TRENCHING OF (E) LANDSCAPING FOR CONDUIT PLACEMENT

## LEGEND

-  REMOVE (E) PAVEMENT, PATCH AND PREPARE FOR NEW WORK
-  TRENCHING OF (E) LANDSCAPING FOR CONDUIT PLACEMENT

## PROJECT HEADQUARTERS BUILDING EXTERIOR PHYSICAL SECURITY IMPROVEMENTS

SPECIFICATION NO.: 2003  
PROJECT NUMBER: 105168  
DRAWING NUMBER:  
APPROVAL SHEET NO.:

ADDRESS:  
700 N. ALAMEDA ST.  
LOS ANGELES, CA 90012

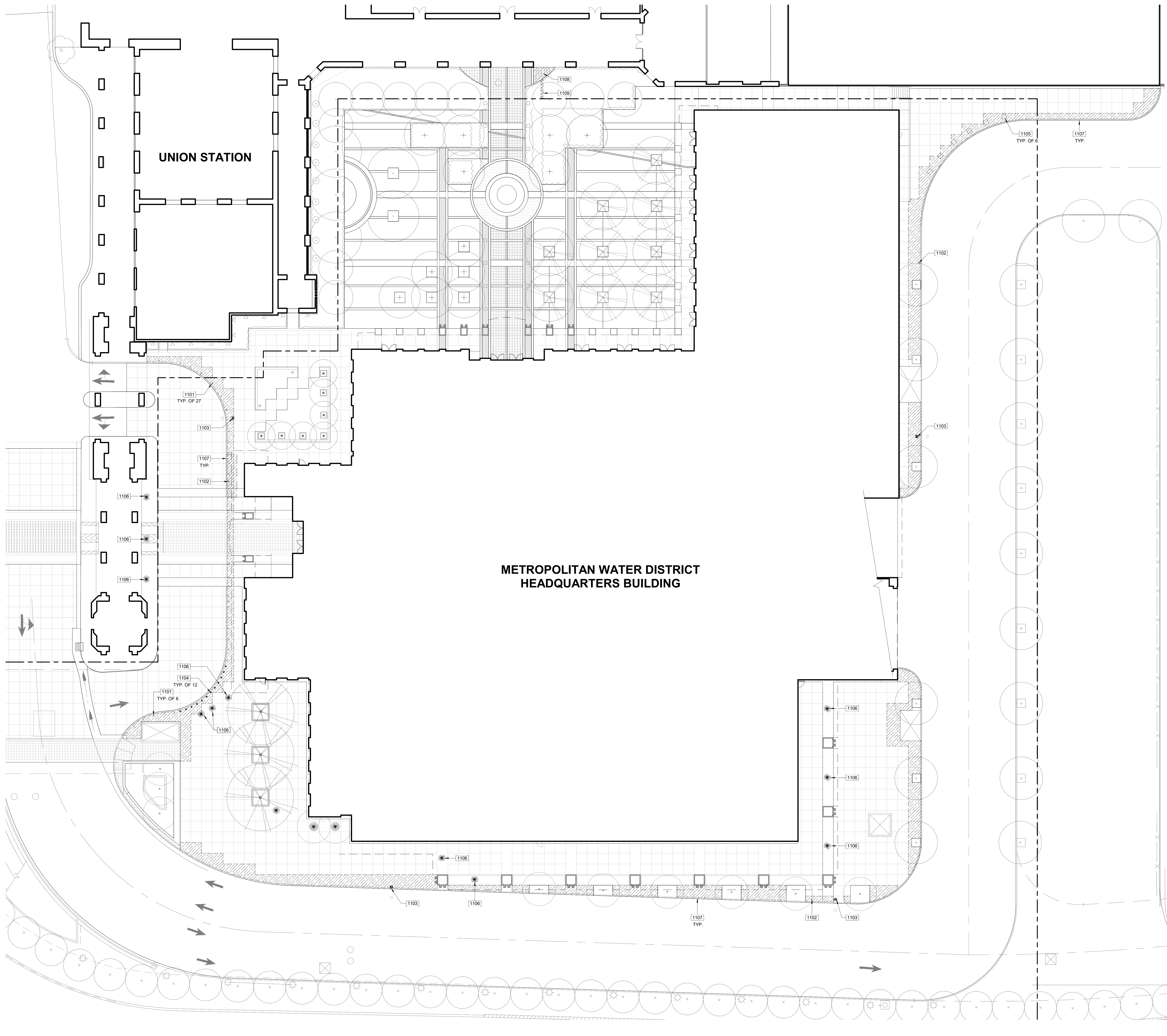
REVISIONS:	DELTA	TITLE	DATE	BY
	150% CHECKSET		MARCH 2021	IBI

PM:	ARCHITECTURAL
PE:	
SENIOR TECH. MGR.:	AO
DRAWN BY:	As Indicated
SCALE:	04/22/21
DATE:	116535
JOB NO.:	
SHEET TITLE:	

SITE DEMOLITION PLAN

SHEET NO.:

A1000



1 SITE DEMOLITION PLAN  
A1000 Scale: 1/16" = 1'-0"

CONFIDENTIAL METROPOLITAN INFORMATION

C:\work\delaware\delaware\Documents\IBI\20201105\105168\MWD\_SecurityImprovements\_1000\_alameda\plan.rvt  
2021-04-22 09:55:54 AM



# ATTACHMENT C Design Plan

**NOT FOR  
CONSTRUCTION**

## 1000-GENERAL NOTES

1. PRIOR TO ANY UNDERGROUND SITE WORK, VERIFY LOCATION OF ALL EXISTING UTILITIES WITH UNDERGROUND SERVICE ALERT.
2. BOLLARDS SHALL BE SPACED EQUIDISTANTLY SO THAT THE CLEAR DISTANCE BETWEEN BOLLARDS DOES NOT EXCEED 40". CENTER OF BOLLARD SHALL BE NO MORE THAN 24" FROM CURB LINE AND INSTALLED SUCH THAT THE TOP SURFACE IS LEVEL.
3. MAINTAIN 3' - 0" CLEAR AROUND ALL (E) FIRE HYDRANTS, TYP.

## LEGEND

-----	ORNAMENTAL FENCE
-----	PROPERTY LINE
-----	FIRE DEPARTMENT ACCESS, WIDTH 20'-0"
○	STAINLESS STEEL BOLLARD, SEE DETAIL 5/A8002
●	REMOVABLE STAINLESS STEEL BOLLARD, SEE DETAIL 7/A8002
●	REMOVABLE STAINLESS STEEL BOLLARD, SEE DETAIL 13/A8002
●	(E) RELOCATED PLANTER
■	PATCH AND REPAIR CONCRETE WALK TO NEAREST JOINT, SEE DETAIL 11/A8002
■	NATIVE SOIL BACKFILL OF CONDUIT TRENCH, SEE DETAIL 16/A8002

## PROJECT HEADQUARTERS BUILDING EXTERIOR PHYSICAL SECURITY IMPROVEMENTS

SPECIFICATION NO.: 2003  
PROJECT NUMBER: 105168  
DRAWING NUMBER:  
APPROVAL SHEET NO.:

ADDRESS:  
700 N. ALAMEDA ST.  
LOS ANGELES, CA 90012

REVISIONS:	TITLE	DATE	BY
DELTA	15% CHECKSET	MARCH 2021	IBI

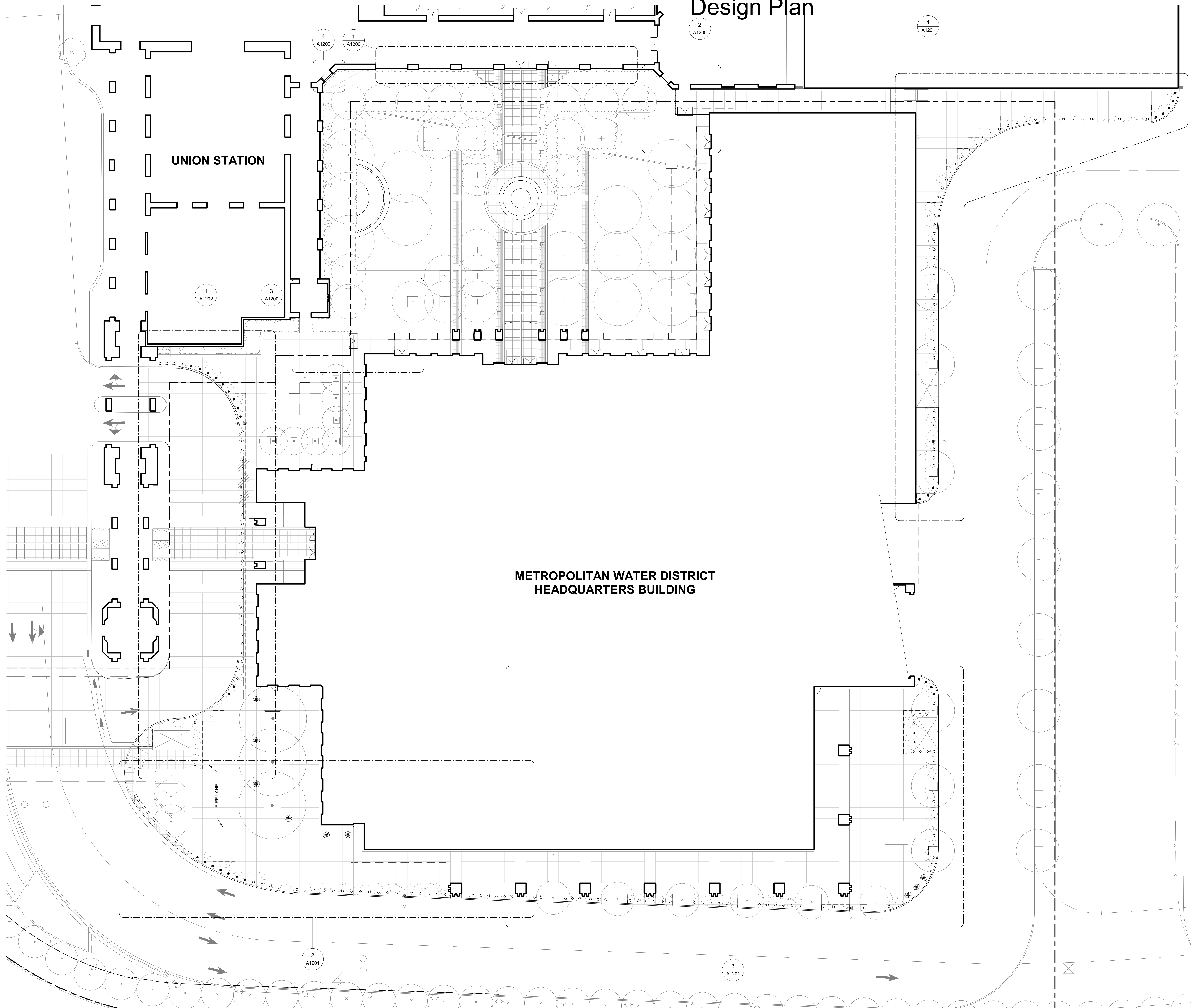
PM:	ARCHITECTURAL
PE:	
SENIOR TECH. MGR.:	AO
DRAWN BY:	As Indicated
SCALE:	04/22/21
DATE:	116535
JOB NO.:	
SHEET TITLE:	

SITE PLAN

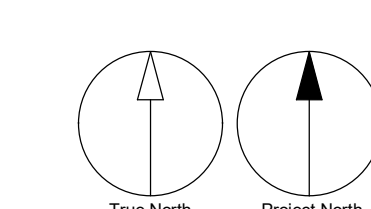
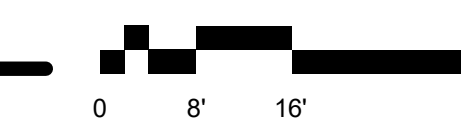
SHEET NO.:

A1100

CONFIDENTIAL METROPOLITAN INFORMATION



1 SITE PLAN  
A1100 Scale: 1/16" = 1'-0"





# ATTACHMENT C Design Plan

**NOT FOR  
CONSTRUCTION**

## 1000-GENERAL NOTES

- PRIOR TO ANY UNDERGROUND SITE WORK, VERIFY LOCATION OF ALL EXISTING UTILITIES WITH UNDERGROUND SERVICE ALERT.
- BOLLARDS SHALL BE SPACED EQUIDISTANTLY SO THAT THE CLEAR DISTANCE BETWEEN BOLLARDS DOES NOT EXCEED 40". CENTER OF BOLLARD SHALL BE NO MORE THAN 24" FROM CURB LINE AND INSTALLED SUCH THAT THE TOP SURFACE IS LEVEL.
- MAINTAIN 3'-0" CLEAR AROUND ALL (E) FIRE HYDRANTS, TYP.

## 1100 - KEYNOTES

- 1210 GARD READER  
1212 (E) CONCRETE COLUMN WITH PLASTER FINISH. PATCH AND REPAIR FINISH AS NECESSARY FOR NEW WORK  
1215 ORNAMENTAL FENCE PER DETAIL 6/A8001  
1216 ORNAMENTAL FENCE PER DETAIL 6/A8001  
1221 (E) CONCRETE WALL WITH PLASTER FINISH. PATCH AND REPAIR FINISH AS NECESSARY FOR NEW WORK  
1222 ELECTRICAL CONDUIT

## LEGEND

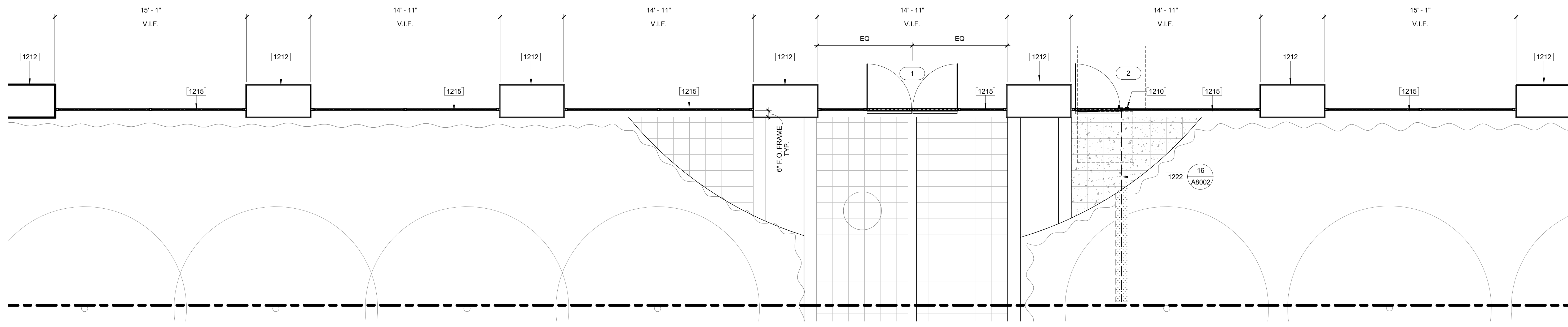
- ORNAMENTAL FENCE
- PROPERTY LINE
- FIRE DEPARTMENT ACCESS, WIDTH 20'-0"
- STAINLESS STEEL BOLLARD, SEE DETAIL 6/A8002
- REMOVABLE STAINLESS STEEL BOLLARD, SEE DETAIL 7/A8002
- REMOVABLE STAINLESS STEEL BOLLARD, SEE DETAIL 13/A8002
- (E) RELOCATED PLANTER
- PATCH AND REPAIR CONCRETE WALK TO NEAREST JOINT, SEE DETAIL 11/A8002
- NATIVE SOIL BACKFILL OF CONDUIT TRENCH, SEE DETAIL 16/A8002
- 60" DIA. ACCESSIBLE FLOOR SPACE LOCATION
- 30" X 48" ACCESSIBLE FLOOR SPACE LOCATION
- 60" X 60" ACCESSIBLE FLOOR SPACE LOCATION

## PROJECT HEADQUARTERS BUILDING EXTERIOR PHYSICAL SECURITY IMPROVEMENTS

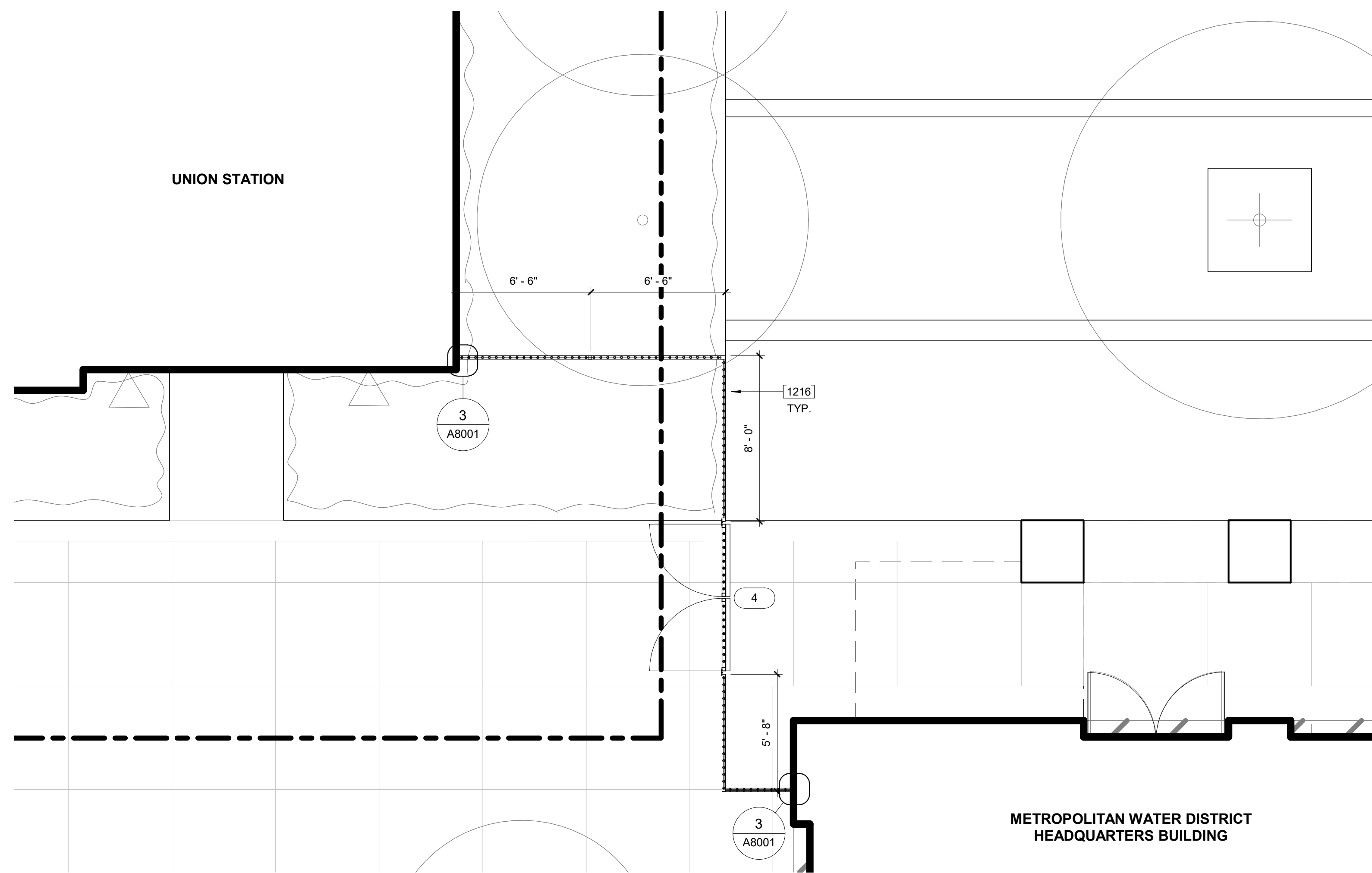
SPECIFICATION NO.: 2003  
PROJECT NUMBER: 105168  
DRAWING NUMBER:  
APPROVAL SHEET NO.:  
ADDRESS:  
700 N. ALAMEDA ST.  
LOS ANGELES, CA 90012

REVISIONS:

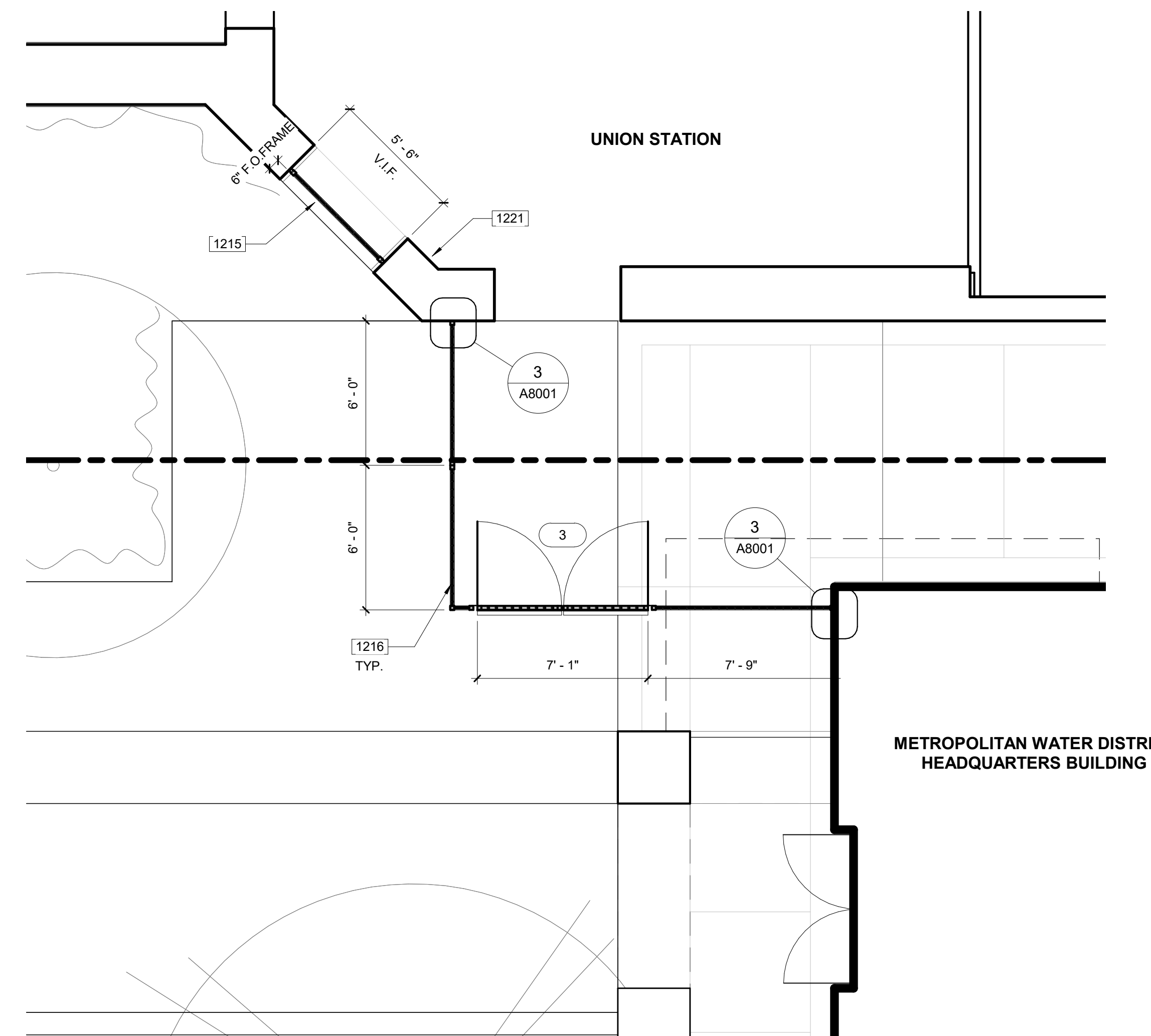
DELTA	TITLE	DATE	BY
15%	CHECKSET	MARCH 2021	IBI



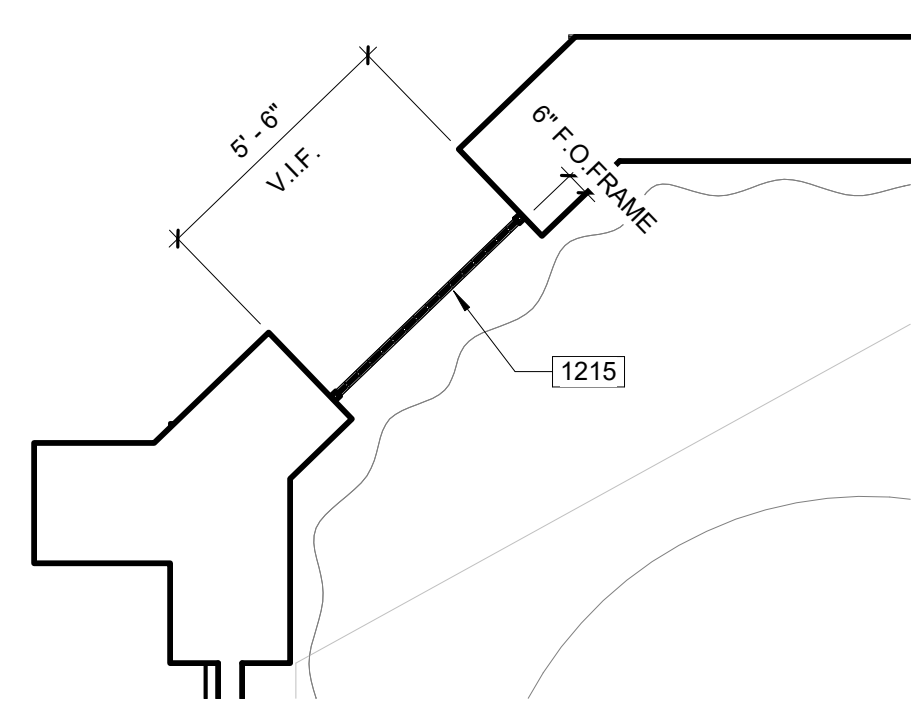
1 ENLARGED SITE PLAN - ORNAMENTAL FENCE NORTH  
A1200 Scale: 1/4" = 1'-0"



3 ENLARGED SITE PLAN - ORNAMENTAL FENCE SOUTH  
A1200 Scale: 1/4" = 1'-0"



2 ENLARGED SITE PLAN - ORNAMENTAL FENCE WEST  
A1200 Scale: 1/4" = 1'-0"



4 ENLARGED SITE PLAN - ORNAMENTAL FENCE NORTH WEST  
A1200 Scale: 1/4" = 1'-0"

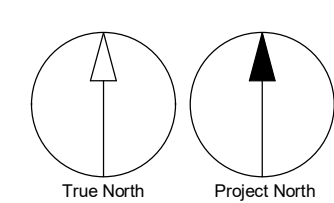
GATE SCHEDULE											
DOOR No.	TYPE	MAT	FINISH	WIDTH	HEIGHT	HARDWARE	PANIC	SIGNAGE	DETAIL	REMARKS	DOOR No.
1	AA			7'-0"	8'-9"		Yes		16/A8001		1
2	BB			3'-6"	8'-4"		Yes		17/A8001		2
3	AA			7'-0"	8'-9"		Yes		16/A8001		3
4	AA			7'-0"	8'-9"		Yes		16/A8001		4

CONFIDENTIAL METROPOLITAN INFORMATION

PM: ARCHITECTURAL  
PE:  
SENIOR TECH. MGR.: AO  
DRAWN BY: AO  
SCALE: As Indicated  
DATE: 04/22/21  
JOB NO.: 116535  
SHEET TITLE:

SITE ENLARGED PLAN -  
ORNAMENTAL FENCE

SHEET NO.:



A1200



# ATTACHMENT C Design Plan

**NOT FOR  
CONSTRUCTION**

### 1000-GENERAL NOTES

1. PRIOR TO ANY UNDERGROUND SITE WORK, VERIFY LOCATION OF ALL EXISTING UTILITIES WITH UNDERGROUND SERVICE ALERT.
2. BOLLARDS SHALL BE SPACED EQUIDISTANTLY SO THAT THE CLEAR DISTANCE BETWEEN BOLLARDS DOES NOT EXCEED 40". CENTER OF BOLLARD SHALL BE NO MORE THAN 24" FROM CURB LINE AND INSTALLED SUCH THAT THE TOP SURFACE IS LEVEL.
3. MAINTAIN 3'-0" CLEAR AROUND ALL (E) FIRE HYDRANTS, TYP.

### 1100 - KEYNOTES

- 1201 STAINLESS STEEL BOLLARD
- 1202 STAINLESS STEEL REMOVABLE BOLLARD
- 1203 (E) PLANTER
- 1204 (E) FIRE HYDRANT. MAINTAIN 3'-0" CLEAR AROUND
- 1205 (E) CURB LINE
- 1206 RELOCATED (E) PLANTER. SPACE AT 40" CLR. MAX. 18" FROM CURB LINE
- 1213 (E) SIGNAGE. REMOVE AND REPLACE AS REQUIRED FOR NEW WORK
- 1218 (E) CONCRETE CURB

### LEGEND

- ORNAMENTAL FENCE
- PROPERTY LINE
- FIRE DEPARTMENT ACCESS, WIDTH 20'-0"
- STAINLESS STEEL BOLLARD, SEE DETAIL 5/A8002
- REMOVABLE STAINLESS STEEL BOLLARD, SEE DETAIL 7/A8002
- REMOVABLE STAINLESS STEEL BOLLARD, SEE DETAIL 13/A8002
- ⊕ (E) RELOCATED PLANTER
- ▨ PATCH AND REPAIR CONCRETE WALK TO NEAREST JOINT, SEE DETAIL 11/A8002
- ▨ NATIVE SOIL BACKFILL OF CONDUIT TRENCH, SEE DETAIL 16/A8002
- 60" DIA. ACCESSIBLE FLOOR SPACE LOCATION
- 30" X 48" ACCESSIBLE FLOOR SPACE LOCATION
- 60" X 60" ACCESSIBLE FLOOR SPACE LOCATION

### PROJECT HEADQUARTERS BUILDING EXTERIOR PHYSICAL SECURITY IMPROVEMENTS

SPECIFICATION NO.: 2003  
PROJECT NUMBER: 105168  
DRAWING NUMBER:  
APPROVAL SHEET NO.:

ADDRESS:  
700 N. ALAMEDA ST.  
LOS ANGELES, CA 90012

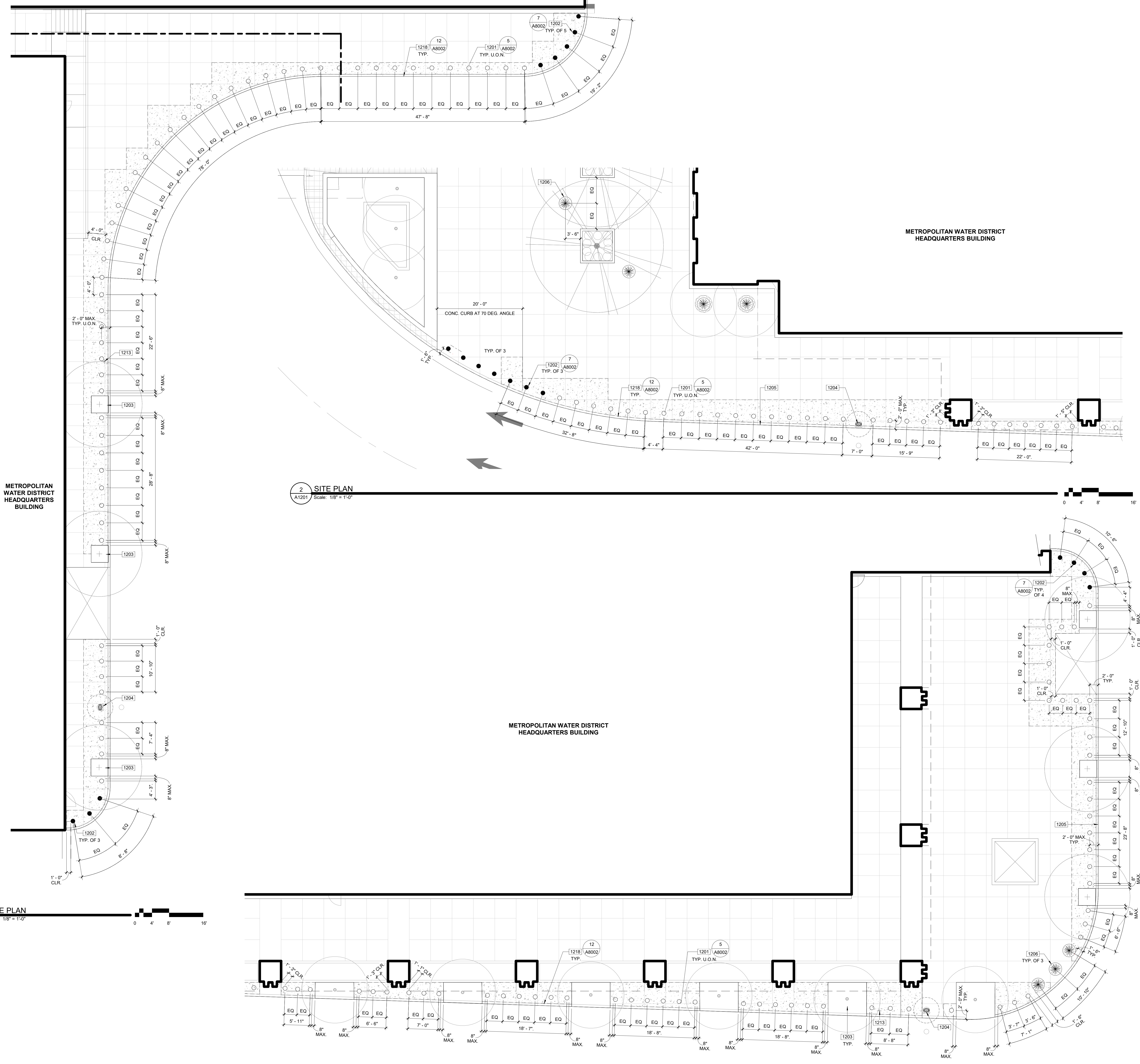
REVISIONS:	TITLE	DATE	BY
DELTA	15% CHECKSET	MARCH 2021	IBI

PM:	ARCHITECTURAL
SENIOR TECH. MGR.:	AO
DRAWN BY:	As Indicated
DATE:	04/22/21
JOB NO.:	116535
SHEET TITLE:	ENLARGED SITE PLANS - PHYSICAL SECURITY

SHEET NO.:

A1201

CONFIDENTIAL METROPOLITAN INFORMATION



1 SITE PLAN  
A1201 Scale: 1/8" = 1'-0"  
0 4' 8' 16'

2 SITE PLAN  
A1201 Scale: 1/8" = 1'-0"  
0 4' 8' 16'

3 SITE PLAN  
A1201 Scale: 1/8" = 1'-0"  
0 4' 8' 16'



# ATTACHMENT C Design Plan

**COPYRIGHT**  
This drawing has been prepared solely for the intended use. There are no warranties or representations made by IBI Group, A California Partnership, or its affiliates for any other use. IBI Group, A California Partnership, and its affiliates shall not be held responsible for any damages or liabilities on the job, and IBI Group shall not be held responsible for any damages or liabilities on the job, and IBI Group shall not be held responsible for any damages or liabilities on the job. This drawing shall be considered as IBI Group's general conditions and shall be subject to the IBI Group's general conditions and shall be subject to the IBI Group's general conditions and shall be subject to the IBI Group's general conditions.

IBI Group, A California Partnership  
is a member of the IBI Group of companies.

**CONSULTANT:**

**STATE SEAL:**

**NOT FOR  
CONSTRUCTION**

**PROJECT**  
**HEADQUARTERS  
BUILDING  
EXTERIOR  
PHYSICAL  
SECURITY  
IMPROVEMENTS**

SPECIFICATION NO.: 2003  
PROJECT NUMBER: 105168  
DRAWING NUMBER:  
APPROVAL SHEET NO.:  
ADDRESS:  
700 N. ALAMEDA ST.  
LOS ANGELES, CA 90012

**REVISIONS:**

DELTA	TITLE	DATE	BY
150%	CHECKSET	MARCH 2021	IBI

PM:	ARCHITECTURAL
PE:	
SENIOR TECH. MGR.:	AO
DRAWN BY:	As Indicated
DATE:	04/22/21
JOB NO.:	116535
SHEET TITLE:	

ENLARGED SITE PLANS -  
PHYSICAL SECURITY

SHEET NO.:

A1202

**1000-GENERAL NOTES**

- PRIOR TO ANY UNDERGROUND SITE WORK, VERIFY LOCATION OF ALL EXISTING UTILITIES WITH UNDERGROUND SERVICE ALERT.
- BOLLARDS SHALL BE SPACED EQUIDISTANTLY SO THAT THE CLEAR DISTANCE BETWEEN BOLLARDS DOES NOT EXCEED 40". CENTER OF BOLLARD SHALL BE NO MORE THAN 24" FROM CURB LINE AND INSTALLED SUCH THAT THE TOP SURFACE IS LEVEL.
- MAINTAIN 3'-0" CLEAR AROUND ALL (E) FIRE HYDRANTS, TYP.

**1100 - KEYNOTES**

1201 STAINLESS STEEL BOLLARD  
1202 STAINLESS STEEL REMOVABLE BOLLARD  
1204 (E) FIRE HYDRANT, MAINTAIN 3'-0" CLEAR AROUND  
1206 RELOCATED (E) PLANTER, SPACE AT 40" CLR. MAX. 18" FROM CURB LINE  
1207 (E) LANE MARKER  
1208 (E) CANOPY ABOVE  
1213 (E) SIGNAGE, REMOVE AND REPLACE AS REQUIRED FOR NEW WORK  
1218 (E) CONCRETE CURB

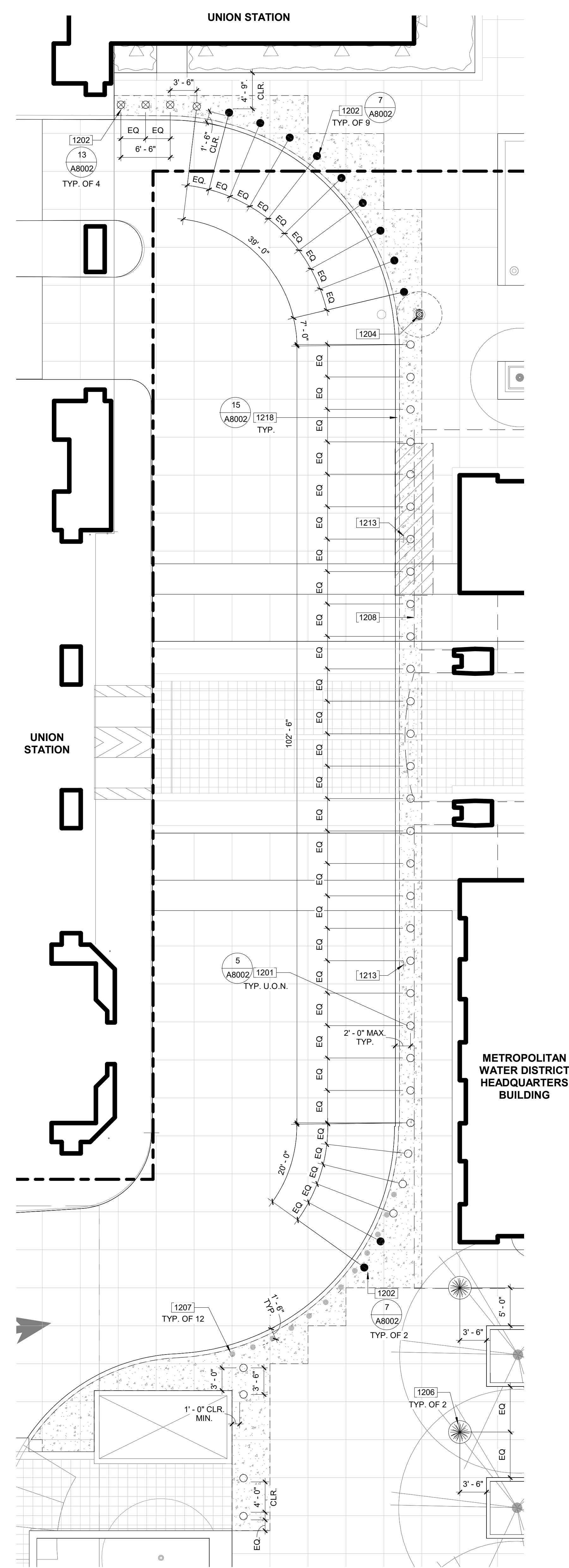
**LEGEND**

----- ORNAMENTAL FENCE  
----- PROPERTY LINE  
----- FIRE DEPARTMENT ACCESS, WIDTH 20'-0"

○ STAINLESS STEEL BOLLARD, SEE DETAIL 5/A8002  
● REMOVABLE STAINLESS STEEL BOLLARD, SEE DETAIL 7/A8002  
● REMOVABLE STAINLESS STEEL BOLLARD, SEE DETAIL 13/A8002  
● (E) RELOCATED PLANTER

■ PATCH AND REPAIR CONCRETE WALK TO NEAREST JOINT, SEE DETAIL 11/A8002  
■ NATIVE SOIL BACKFILL OF CONDUIT TRENCH, SEE DETAIL 16/A8002

○ 60" DIA. ACCESSIBLE FLOOR SPACE LOCATION  
○ 30" X 48" ACCESSIBLE FLOOR SPACE LOCATION  
○ 60" X 60" ACCESSIBLE FLOOR SPACE LOCATION



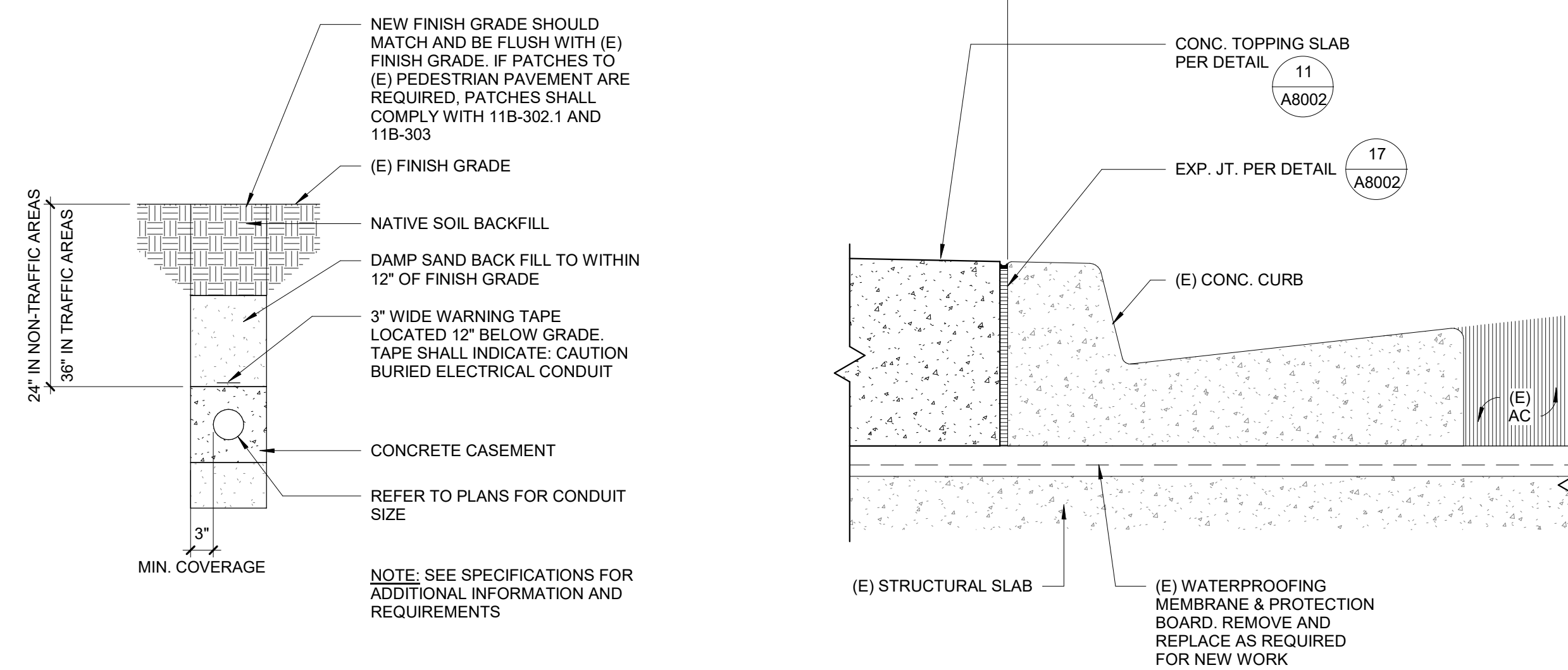
**1 SITE PLAN**  
A1202 Scale: 1/8" = 1'-0"  
0 4' 8' 16'





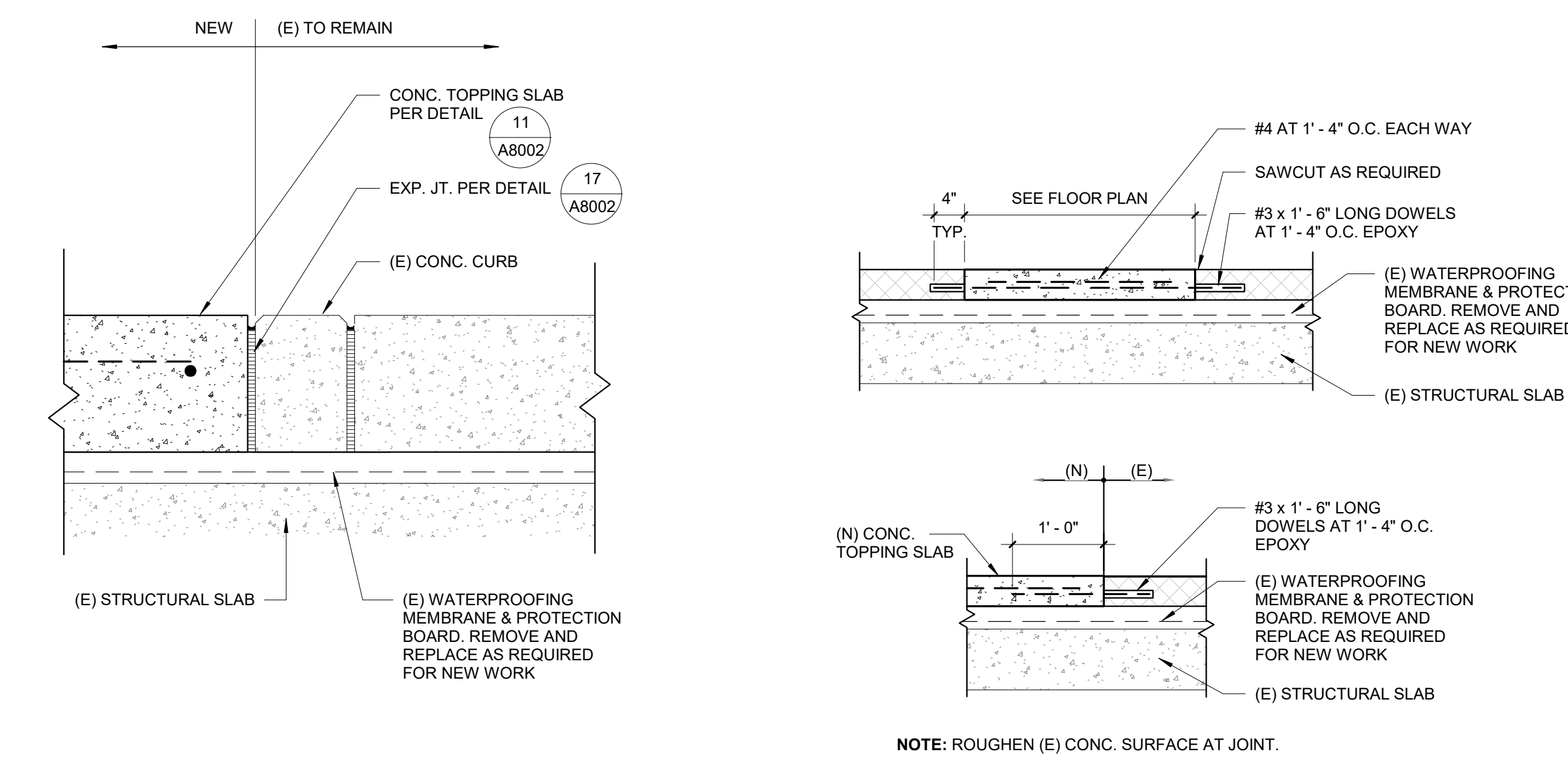
# ATTACHMENT C

## Design Plan



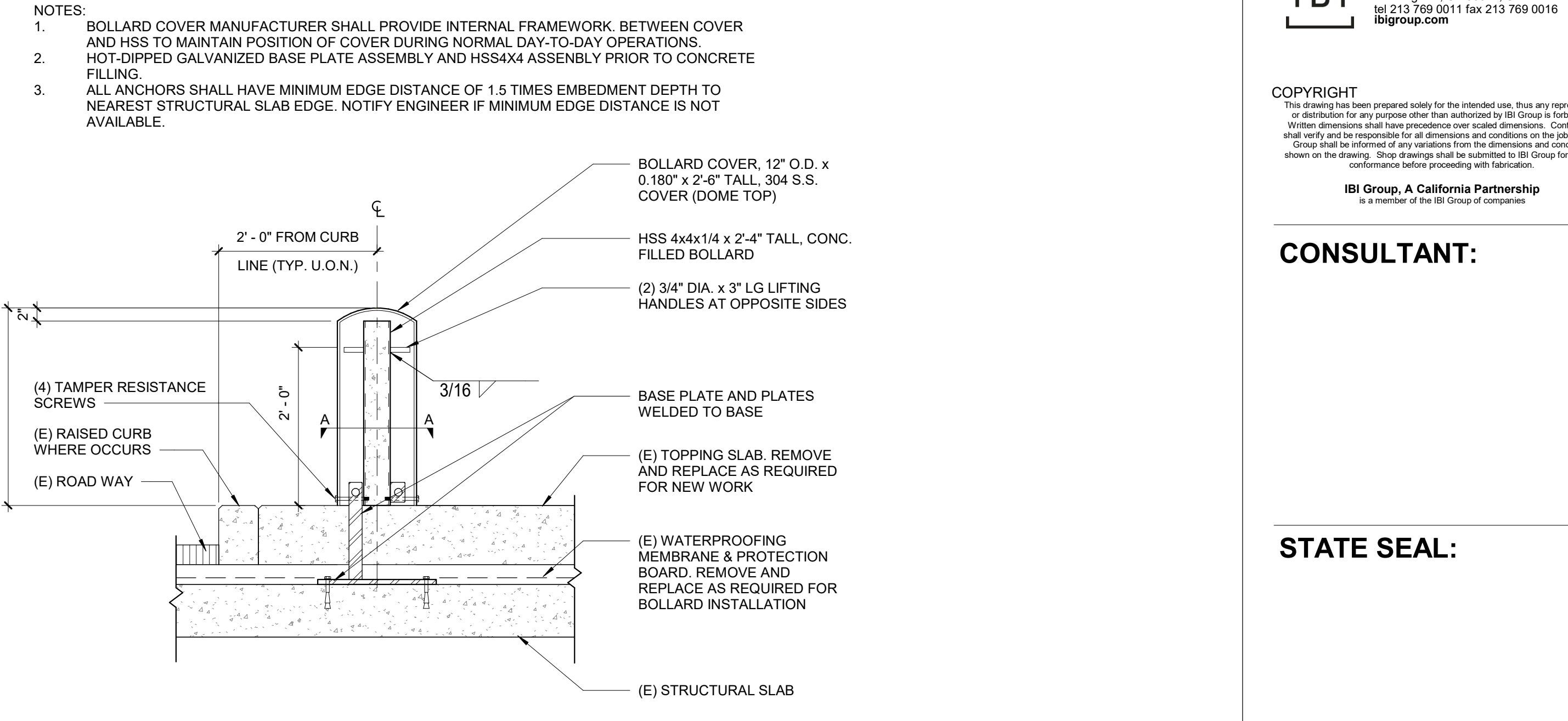
16 ELEC CONDUIT DUCT BANK  
Scale: 3/4" = 1'-0"

12 WALK - CONCRETE - CURB & GUTTER  
Scale: 1 1/2" = 1'-0"



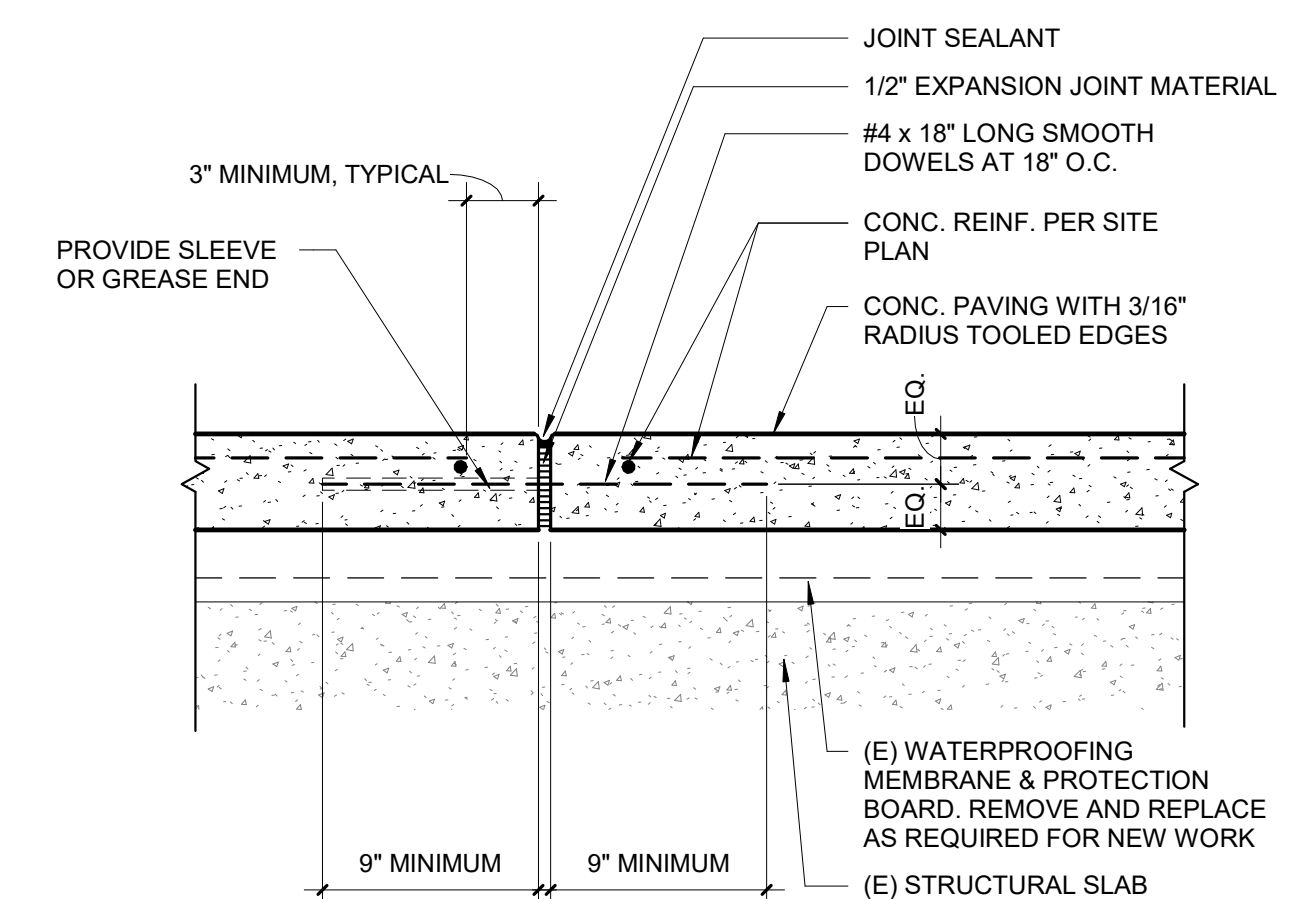
15 WALK - CONCRETE - FLUSHED CURB  
Scale: 1 1/2" = 1'-0"

11 WALK - TYP. SLAB REPAIR  
Scale: 3/4" = 1'-0"



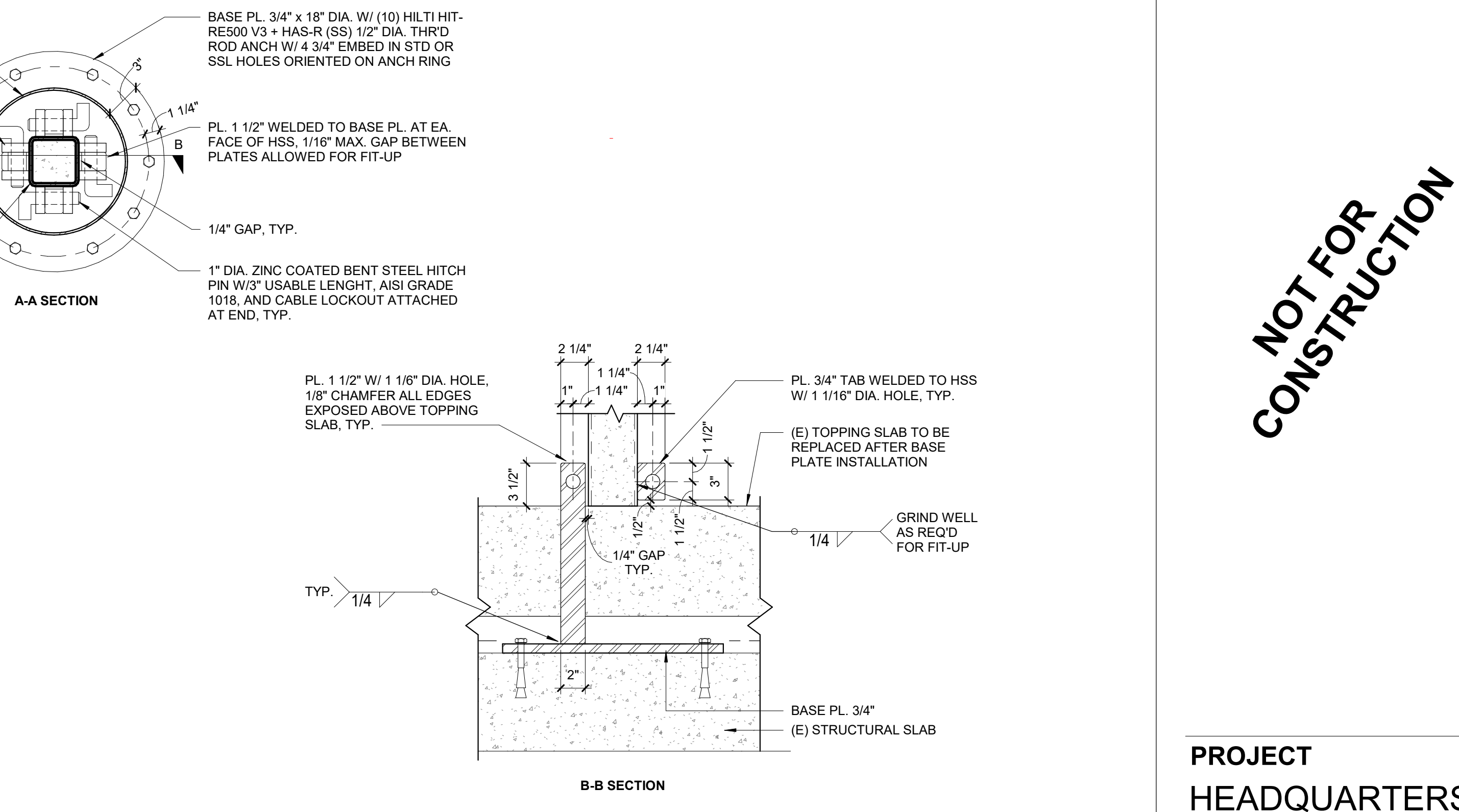
7 BOLLARD - REMOVABLE  
Scale: 3/4" = 1'-0"

5 BOLLARD - FIXED  
Scale: 3/4" = 1'-0"

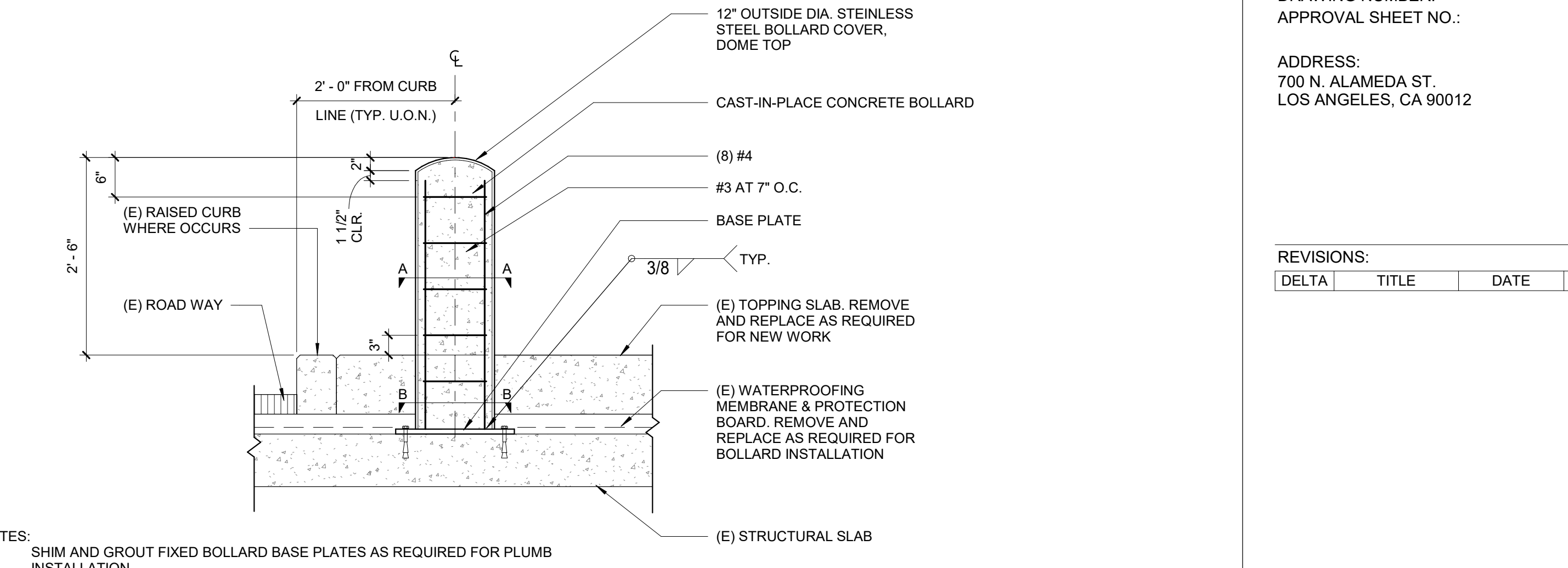


17 WALK - EXPANSION JOINT  
Scale: 1 1/2" = 1'-0"

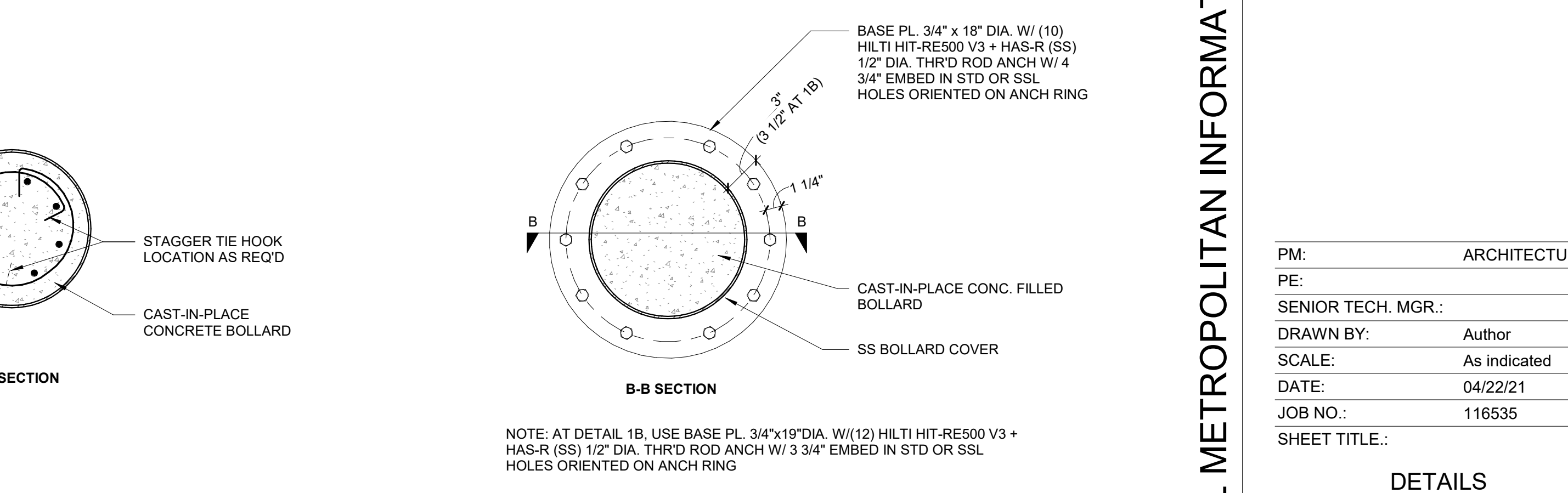
13 BOLLARD - REMOVABLE  
Scale: 1 1/2" = 1'-0"



7 BOLLARD - REMOVABLE  
Scale: 3/4" = 1'-0"



7 BOLLARD - REMOVABLE  
Scale: 3/4" = 1'-0"



5 BOLLARD - FIXED  
Scale: 3/4" = 1'-0"

PENDING DETAIL COORDINATION

NOT FOR CONSTRUCTION

**PROJECT**  
HEADQUARTERS BUILDING  
EXTERIOR  
PHYSICAL SECURITY IMPROVEMENTS

SPECIFICATION NO.: 2003  
PROJECT NUMBER: 105168  
DRAWING NUMBER:  
APPROVAL SHEET NO.:  
ADDRESS:  
700 N. ALAMEDA ST.  
LOS ANGELES, CA 90012

REVISIONS:	DELTA	TITLE	DATE	BY

PM: ARCHITECTURAL  
PE: SENIOR TECH. MGR.:  
DRAWN BY: Author  
SCALE: As Indicated  
DATE: 04/22/21  
JOB NO.: 116535  
SHEET TITLE:

DETAILS

SHEET NO.:

A8002

CONFIDENTIAL METROPOLITAN INFORMATION

C:\Users\kshah\OneDrive\Documents\IBI\2020\16533\_MSP\_SCP\PhysicalSecurityImprovements\_12002\_A8002.dwg (last modified: 2021/04/22 09:56:22 AM)