



OFFICIAL PUBLIC TRANSIT PROVIDER

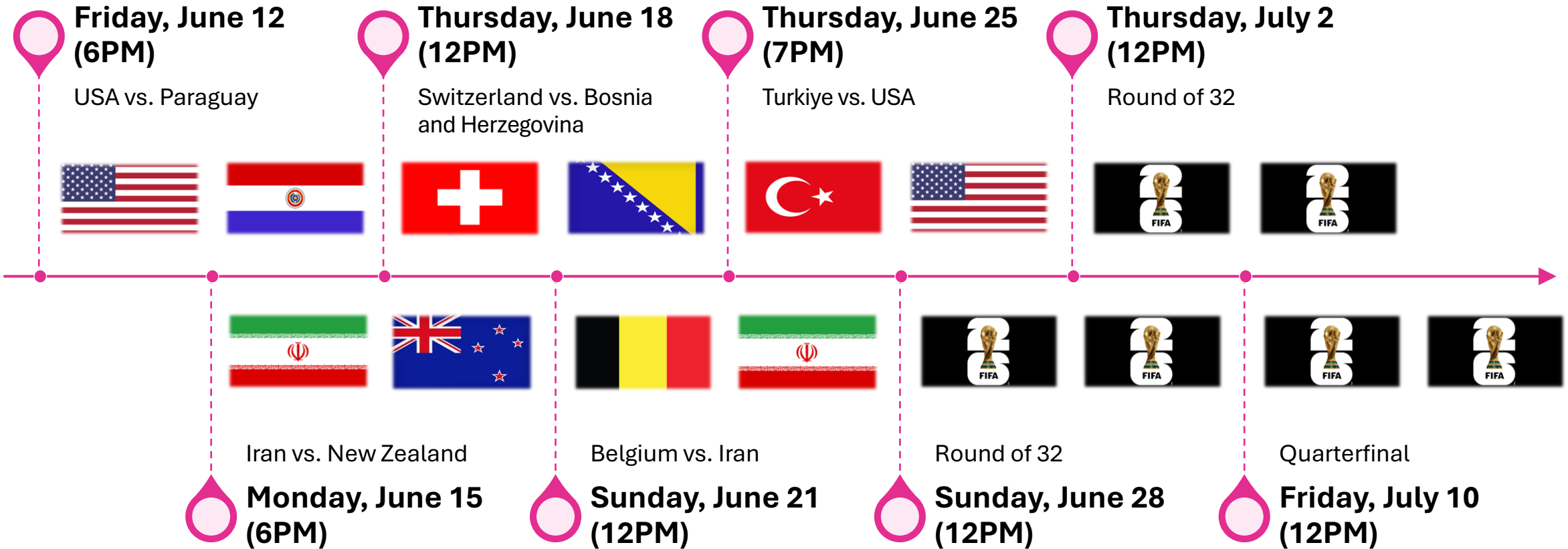
2026 FIFA WORLD CUP READINESS REPORT

2028 Olympic & Paralympic Games/Quarterly Special Board Meeting

April 15, 2026



Who's Playing in LA and When



Ready, Set, Go!



| Event Specific Considerations | | Page | |
|-------------------------------|--------------------------------|-----------------------------------------------|-----|
| | Purpose & Need | Mission & Vision | 23 |
| | | Advocacy | 27 |
| | | Internal Coordination | 31 |
| | | External Coordination | 37 |
| | | Transportation Demand Forecast | 43 |
| | Service Plan | Special Event Service Plan | 51 |
| | | Construction/Concurrent Efforts | 57 |
| | | Speed and Reliability | 63 |
| | | First/Last Mile | 67 |
| | | Event Process Monitoring and Improvements | 73 |
| | | Safety & Security | 79 |
| | | Emergency Operations Center (EOC) | 85 |
| | Safety & Emergency Management | Crowd Management | 91 |
| | | Accessibility & Universal Mobility | 97 |
| | | Customer Information, Signage, and Wayfinding | 101 |
| | Customer Experience | Fare Payment | 105 |
| | | Surprise & Delight | 109 |
| | | Weather Resiliency | 113 |
| | | Budget | 119 |
| | Agency-Wide Success Strategies | Training | 123 |
| | | Workforce | 127 |
| | | Technology | 131 |
| | | Contingency Planning | 135 |
| | | After Action | 139 |

Portfolios and Workstreams

| | |
|------------|---------------------------------------|
| Service | WCGETS Service Planning |
| | WCGETS Fleet Enhancements |
| | WCGETS Operations |
| | Safety & Security |
| | Speed and Reliability |
| | Temporary Park & Ride Facilities |
| Access | Infrastructure |
| | Customer Info/Signage/Wayfinding |
| | Accessibility/Universal Mobility |
| | Marketing/Communications |
| | Fare Payment/Integrated Ticketing/TAP |
| | Finance & Budget |
| Experience | Metro Station Events and Activations |
| | Metro MVP Program |
| | Surprise and Delight |
| | Heat Mitigation |

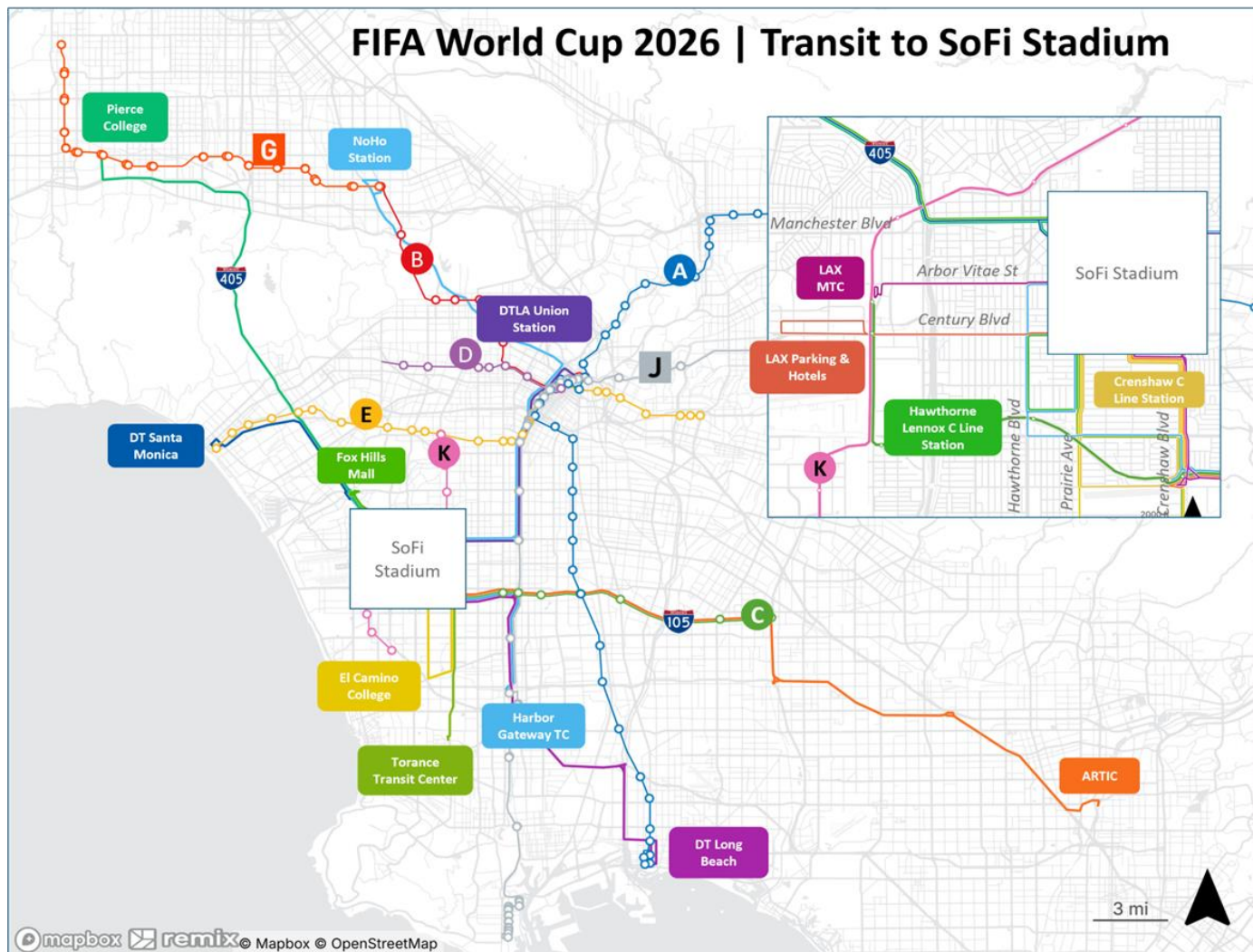
Key Milestone for Service Portfolio



Key milestones achieved this quarter for the Service portfolio are:

- Finalized terminals at Los Angeles Stadium (SoFi)
- Finalized agreements with Intuit Dome East Garage and El Camino College as high access drop-off and pick-up locations
- Finalized WCGETS service plan and completed routing test
- Finalized MOUs with 13 Regional Transit Providers
- Contract approval for charter bus service in support of WCGETS
- Development of bus and operator communications technology
- Standardized Standard Operating Procedures (SOPs) for gameday operations
- Preparation of Metro WCGETS fleet, including “make ready” 65 donated buses from Santa Monica BBB, San Diego MTS, Central Area Transportation Authority (CATA), City of Phoenix, AZ
- Implementation of the Park and Ride reservation system
- Pilot development of the RIITS regional event management solution for real time traffic management
- Completed 3 of 7 Table Top and Full Scale Exercises and three station infrastructure simulations.

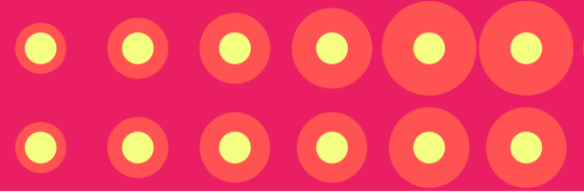
World Cup Games Enhanced Transit Service (WCGETS)



- ARTIC - Anaheim
- BBB Downtown Santa Monica
- CCB 99 Fox Hills Mall
- Crenshaw C Line Parking
- DTLA/Union Station
- Downtown-Long Beach
- El Camino College
- GTrans 7X
- Hawthorne/Lennox C Line
- LAX Parking & Hotels
- LAX/Metro Transit Center
- Metro A Line
- Metro B Line
- Metro C Line
- Metro D Line
- Metro E Line
- Metro G Line
- Metro J Line
- Metro K Line
- North Hollywood Station
- Pierce College
- Torrance Transit 10X



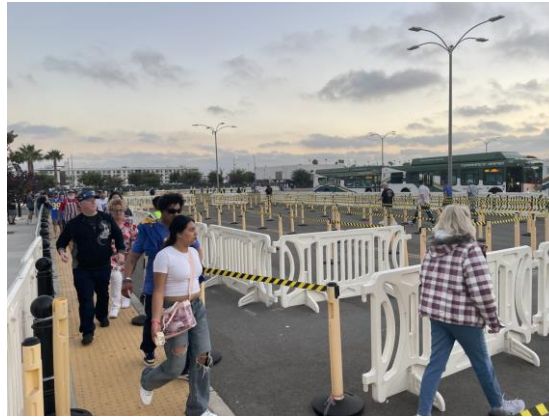
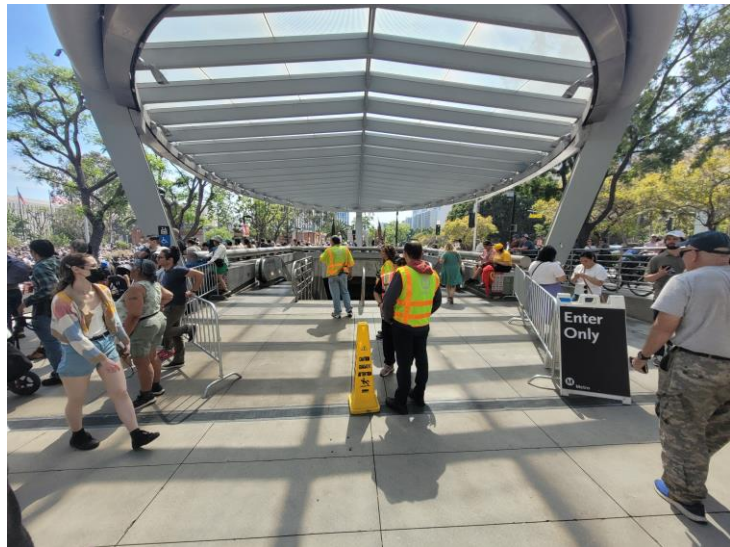
Regional Transit Providers



Metro has fully executed Contracts with the following Regional Transit Providers:

- Access Services
- Big Blue Bus
- Culver City Bus
- Foothill Transit
- Long Beach Transit
- Montebello Bus Lines
- Norwalk Transit System
- OmniTrans
- Orange County Transportation Authority
- Riverside Transit Agency
- Torrance Transit
- GTrans (pending Council approval 4/28)
- Metrolink (MOU being negotiated)

Service



Key Milestone for Access Portfolio

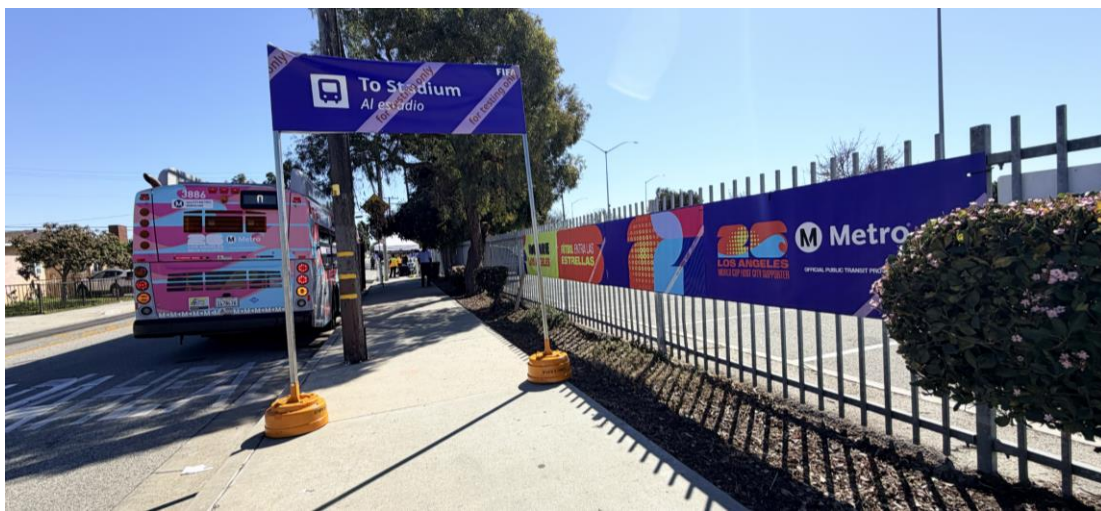
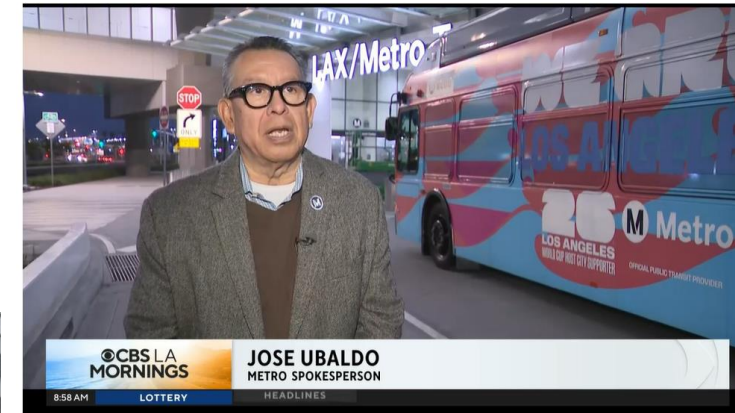
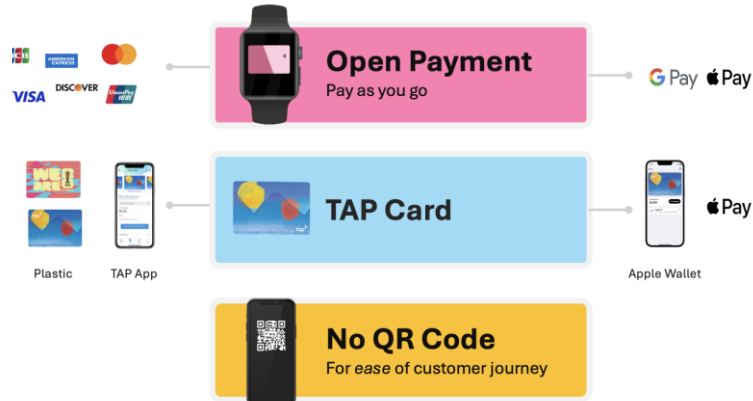
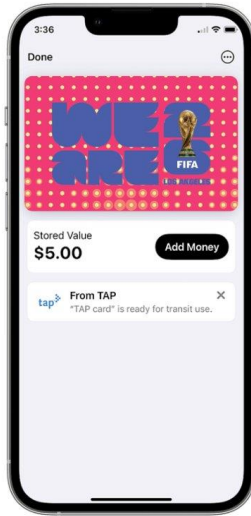


Key milestones achieved this quarter for the Service portfolio are:

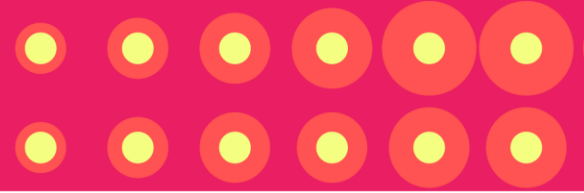
- 100 Days Out press events
- Finalizing the wayfinding kit of parts
- Complete the bus wrap designs for the WCGETS fleet
- Piloting accessibility sensory pods
- Full scale pilot of the infrastructure activations and signage deployment at two hub locations
- Pilot open loop payment
- Launched Marketing & Communications working group with Regional Transit Providers
- Confirmation from the Host Committee for running ADA transport between drop off locations and the stadium entrance

Access

www.metro.net/riding/world-cup



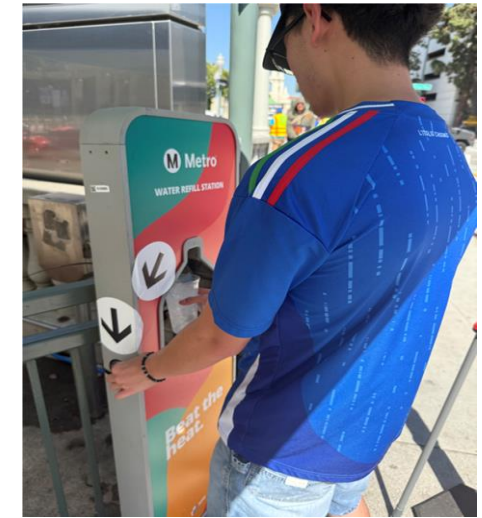
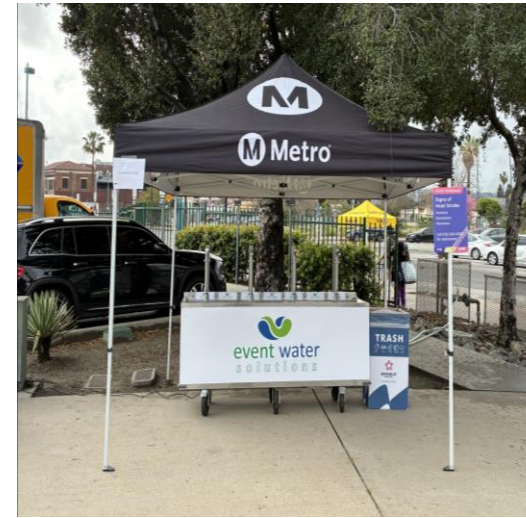
Key Milestone for Experience Portfolio



Key milestones achieved this quarter for the Service portfolio are:

- The Union Station official Fan Zone is finalizing plans and prepared to launch on allocated days of the tournament.
- Sponsors have been secured for hydration stations.
- Metro's MVP Program launched with internal staff signing up to work the events
- Completed bus shelter advertisements for heat mitigation
- Finalizing Metro's deployment plans to staff all official Fan Zones across the county and the FIFA Fan Fest at the Coliseum
- Procurement of Fan Zone Activation Kit of Parts
- Wrapped the countdown clock in Union Station with official Metro's Official Transit Provider print

Experience



Questions?