

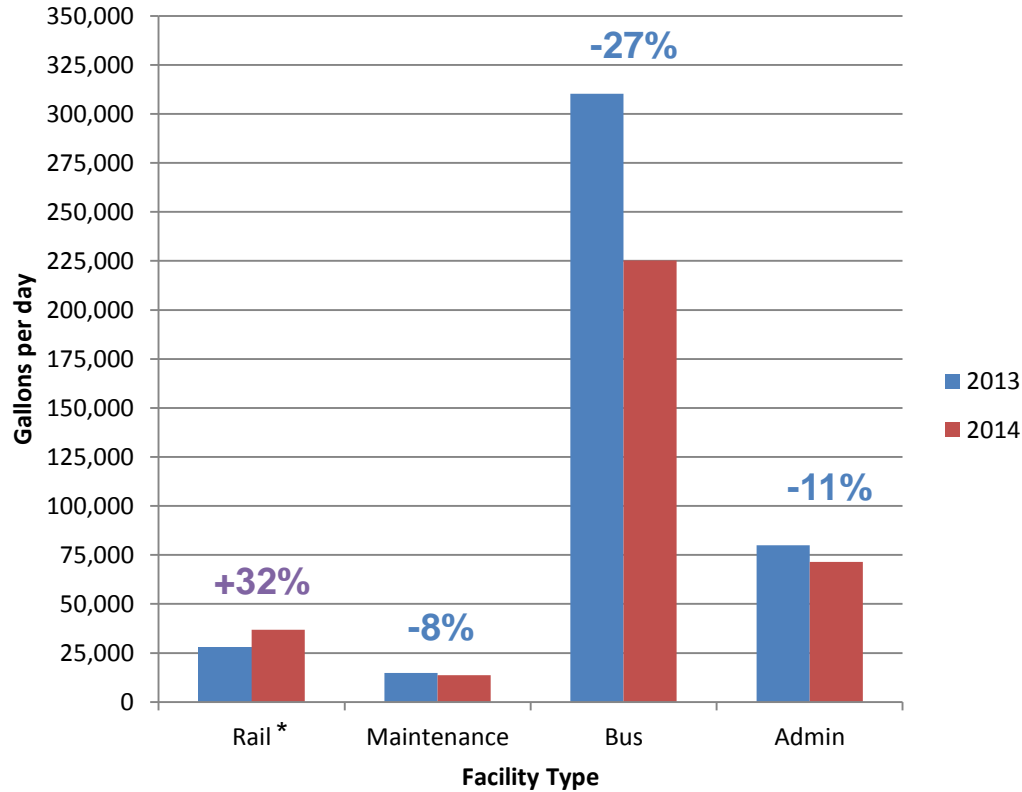
Progress Update: Water Reduction Program

June 2015



Agency-Wide Consumption Changes (2013-2014)

Average Daily Water Use by Facility Type

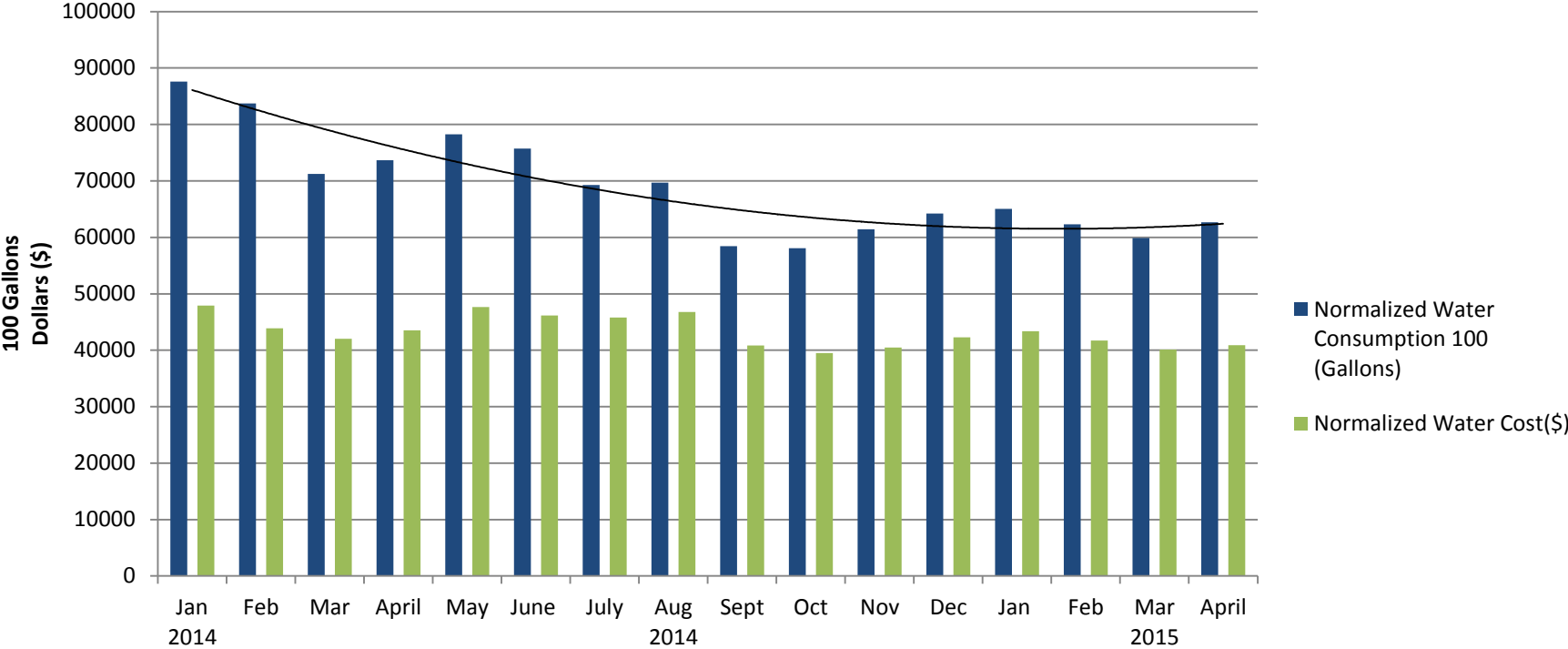


* Rail's water usage increased due to an improved cleanliness initiative beginning in July 2014, positively impacting the interior and exterior cleanliness of the Rail cars.



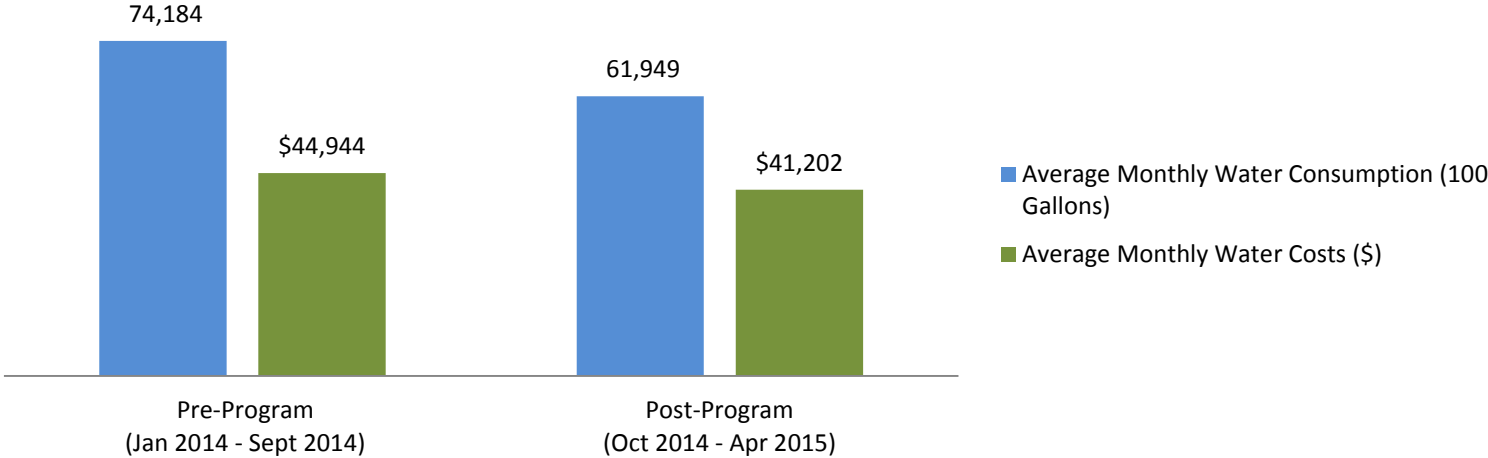
Bus-Wide Water Consumption

Aggregate Division Water Consumption and Cost



Bus Wash Program Status

Pre vs. Post Program: Average Monthly Cost and Use



- > Average Monthly Water Savings: 16%
- > Average Monthly Cost Savings: 8%

Total Estimated Savings:

- > Water Savings: 38 million gallons
- > Cost Savings: \$85,000



Pre vs. Post Program Results by Division

Division	Average Monthly Water Consumption (100 Gallons)			Average Monthly Water Costs (\$)		
	Pre-Program	Post-Program	% Average Savings*	Pre-Program	Post-Program	% Average Savings^
Division 1	5,729	5,008	13%	\$3,811	\$3,344	12%
Division 2	6,128	5,099	17%	\$4,110	\$3,408	17%
Division 3	3,283	3,094	6%	\$2,168	\$2,076	4%
Division 5	6,798	7,089	-4%	\$4,719	\$5,200	-10%
Division 6	2,160	2,001	7%	\$1,436	\$1,330	7%
Division 7	9,297	8,803	5%	\$9,605	\$9,281	3%
Division 8	7,594	2,482	67%	\$4,907	\$1,697	65%
Division 9	17,239	14,870	14%	\$3,487	\$5,853	-68%
Division 10	9,380	6,636	29%	\$6,245	\$4,455	29%
Division 15	7,414	7,074	5%	\$4,918	\$4,720	4%
Division 18	5,858	5,172	12%	\$2,842	\$2,702	5%

* = In order to maintain an acceptable level of cleanliness, certain locations have exercised discretion in washing more frequently to ensure a high level of service to patrons.

^ = Varying levels of cost savings and instances of cost increases are a result not only of consumption, but also the increasing utility rates by both small and large water providers to Metro.

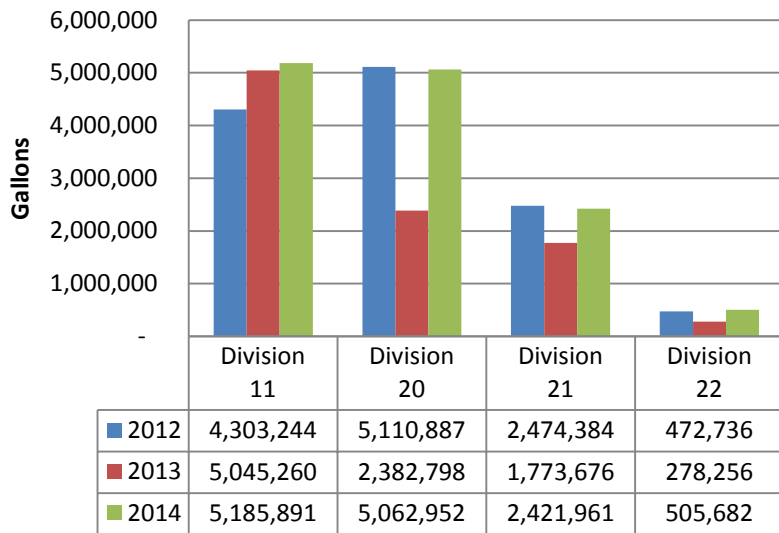


Metro

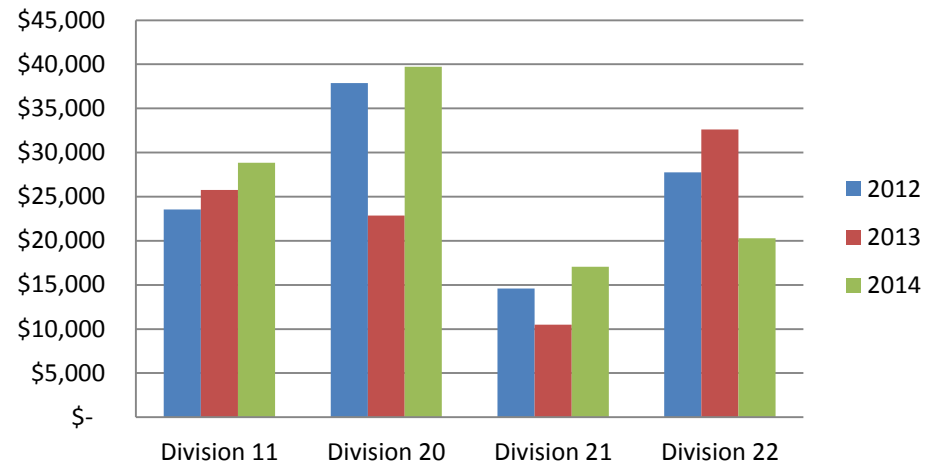


Rail Water Reduction Efforts

Rail Facility Water Consumption



Rail Facility Water Costs



Rail Wash Reduction Program: Potential Savings

(Based on 2014 Consumption)

	Before Pilot	With Pilot	Annual Savings Agency-Wide	Percentage Savings Agency-Wide
Water Consumption (Gallons): Rail Facilities	13,176,324	11,199,875	1,976,449	15-18%
Water Expenditures (\$): Rail Facilities	\$105,923	\$90,035	\$15,888	

