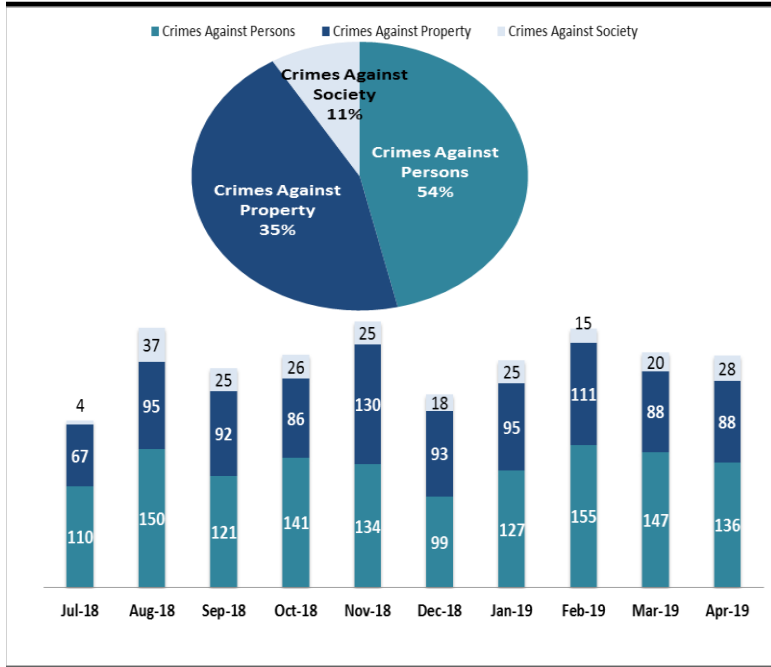


# SYSTEM-WIDE LAW ENFORCEMENT OVERVIEW

APRIL 2019

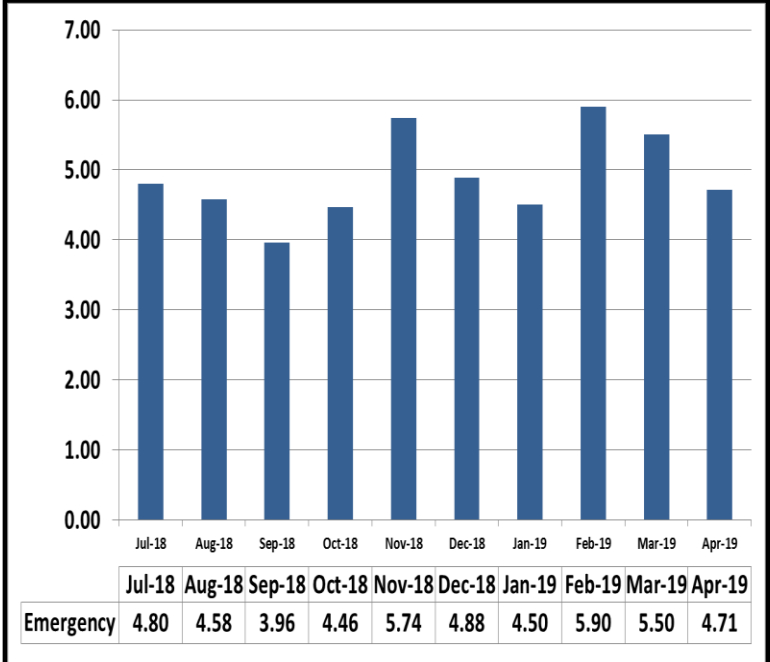
Attachment A

## Crimes Against Persons, Property, and Society



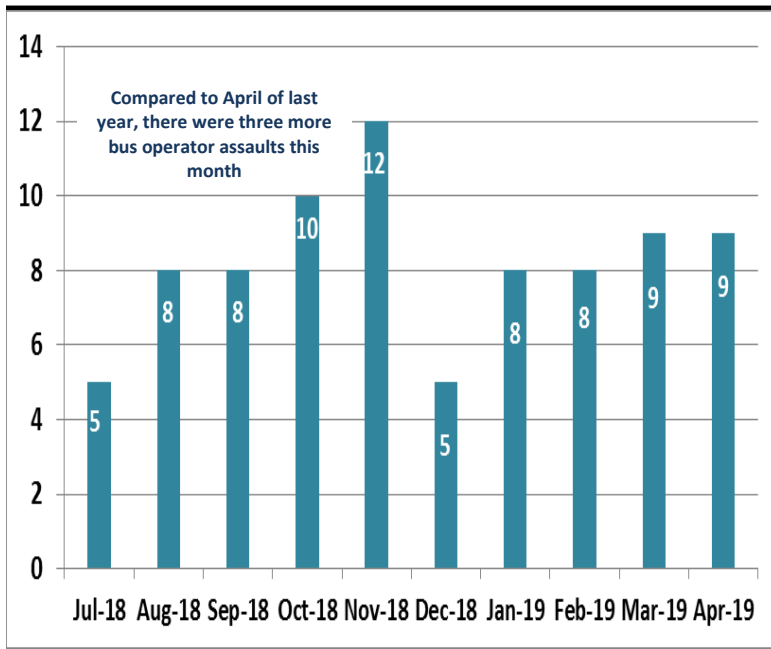
When compared to the same period last year, Crimes Against Persons increased by 14 crimes, Crimes Against Property decreased by 3 crimes, and Crimes Against Society decreased by 19 crimes.

## Average Emergency Response Times

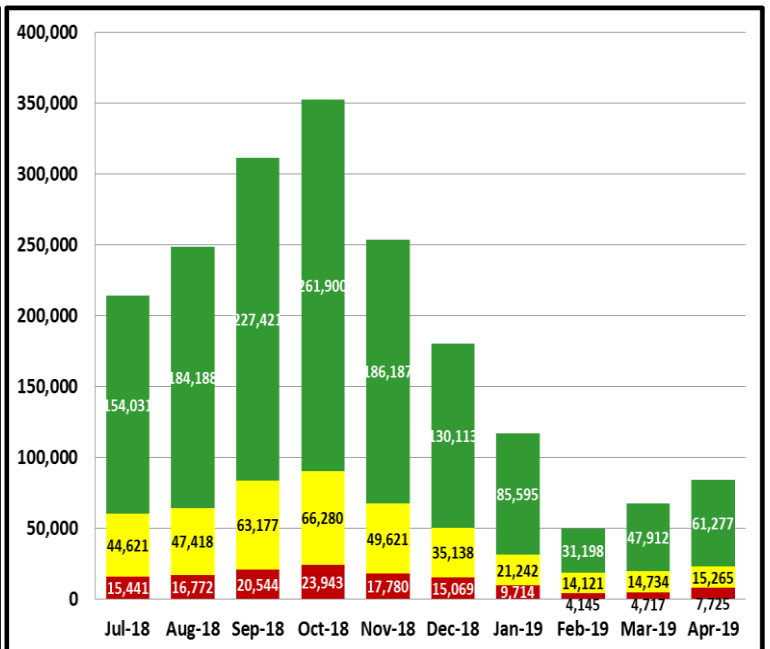


Average emergency response time was 4.71 mins.

## Bus Operator Assaults



## Fare Compliance



**Green Checks**- Occurs when a patron has valid fare

**Yellow Checks**- Occurs when a patron has valid fare, but did not tap at transfer station

**Red Checks**- Occurs when a patron has invalid fare