

# Long Range Transportation Plan Update Kick-off

September 2017



Metro

# Why Does the LRTP Need an Update?

- Measure M sets the stage for a new, innovative LRTP because of its transformative scope and 40-year horizon
- Measure M established a new baseline from which to plan and program
- Adapt to ongoing population, demographic, employment, economic and fiscal changes
- Address evolving priorities
- Now is the time for Metro to be comprehensive and innovative

# Approaches to the Update: It's Modular

## Modular approach:

- Flexible and differentiated, recognizing that agency staff, external partners and communities have varying levels of interests and responsibilities
- Allows for interim deliverables during update process

# Approaches to the Update: It's Dynamic

## Dynamic approach:

- Will deliberately create areas of overlap between standalone modules to reinforce continuous integration and comprehensiveness
- While also allowing for the plan to address a continuum of timing milestones to be adaptable in meeting near term and long range needs

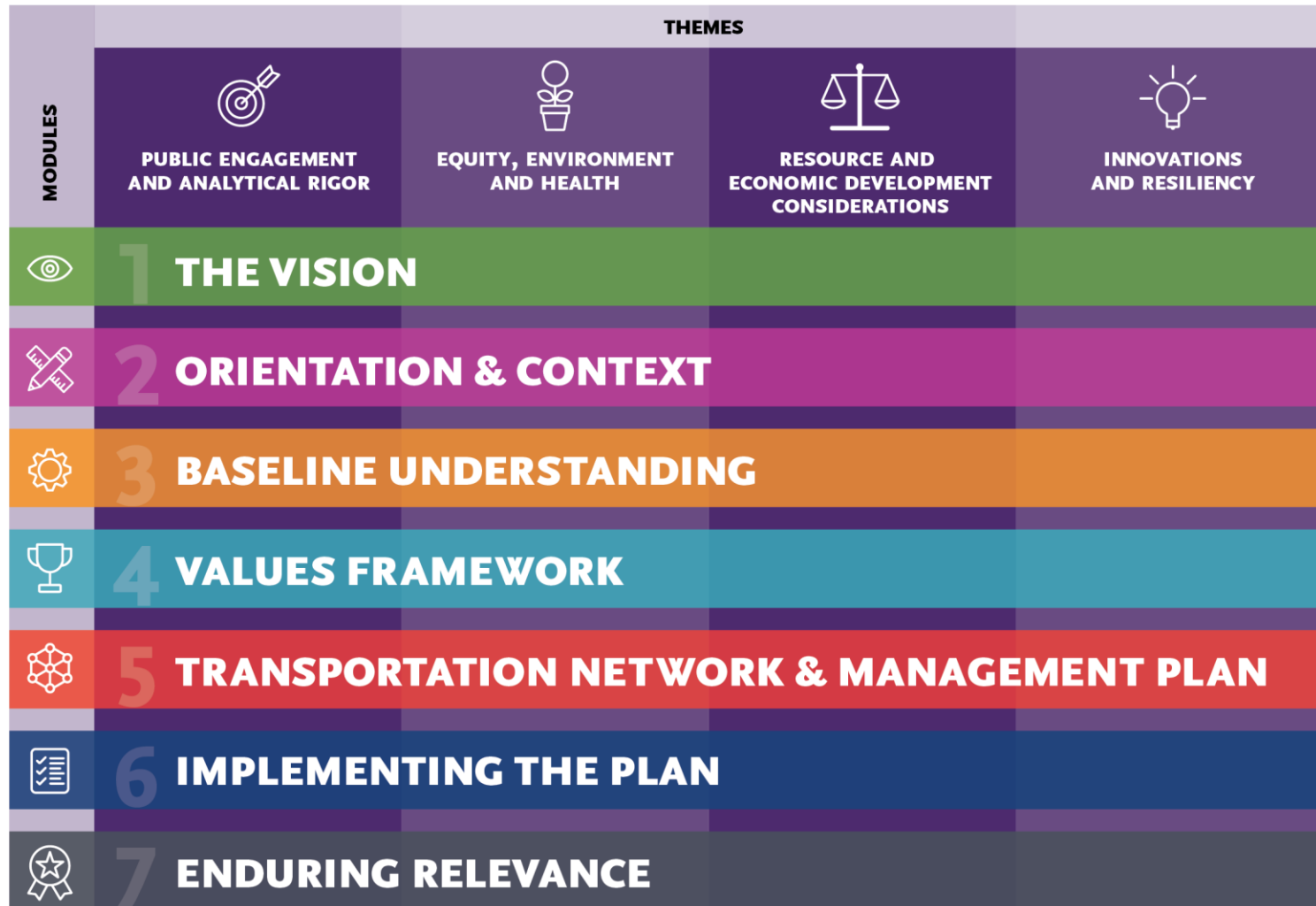
# Approaches to the Update: It's Comprehensive

## Comprehensive approach:

- Will integrate and strengthen connections between existing plans and programs into the LRTP comprehensively and add new features to fill in gaps or provide for new wants
- Thoroughly addresses stakeholders and partners
- Federal requirements must be met
- County gets a quality, comprehensive plan

# A Modular Continuum

Near Term and...

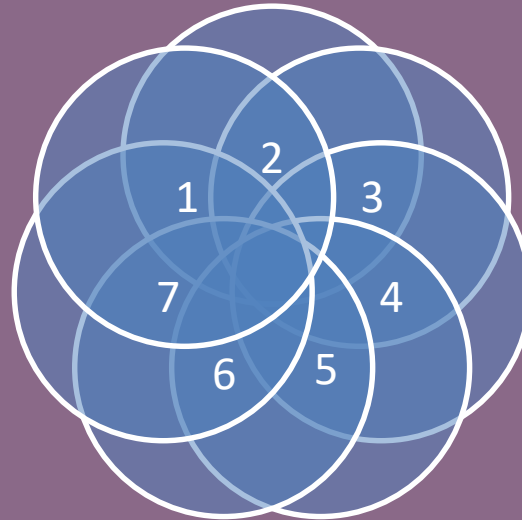


...Long Range

# Interactive Modules

**Preparation:**  
concurrent and  
iterative

Modules



**Outcome:**  
interdependent  
and reinforcing



Metro

# And More: A New Strategic Plan





# PAC's Role in the LRTP Update

- Advisory group accountable to the Board of Directors
- Help guide the LRTP Update process by:
  - Identifying, focusing and clarifying topics
  - Providing input on options
  - Suggesting priorities
- Promote public/stakeholder engagement

# Summary Work Plan, Key Deliverables and Schedule

PERIOD	BOARD DELIVERABLES & MILESTONES
Fall 2017	<ul style="list-style-type: none"> <li>• Introduction to LRTP Update and project work plan</li> <li>• Public Participation Plan</li> </ul>
Winter 2018	<ul style="list-style-type: none"> <li>• Draft Orientation and Context module</li> <li>• <b>POTENTIAL BOARD WORKSHOP:</b> visioning session</li> </ul>
Spring 2018	<ul style="list-style-type: none"> <li>• Topical policy papers</li> <li>• Draft Vision module</li> <li>• <b>ACTION:</b> Short Range Transportation Plan</li> </ul>
Summer 2018	<ul style="list-style-type: none"> <li>• Draft Baseline Understanding module</li> </ul>
Fall 2018	<ul style="list-style-type: none"> <li>• Draft Values Framework module</li> </ul>
Winter 2019	<ul style="list-style-type: none"> <li>• Thematic scenario concepts (<i>fiscally constrained variations of the investment and financial plans</i>)</li> </ul>
Spring 2019	<ul style="list-style-type: none"> <li>• Preferred scenario</li> <li>• Draft Transportation Network and Management Plan module</li> </ul>
Summer 2019	<ul style="list-style-type: none"> <li>• Preferred scenario modeling results</li> <li>• Draft Implementing the Plan module</li> </ul>
Fall 2019	<ul style="list-style-type: none"> <li>• Financial plan</li> <li>• Draft Enduring Relevance module</li> </ul>
Winter 2020	<ul style="list-style-type: none"> <li>• <b>ACTION:</b> Final LRTP</li> </ul>



# L RTP Update Initiated!

Discussion & Questions