

Eastside Transit Corridor Phase 2 Technical Study Planning and Programming Committee Presentation April 19, 2017

Item #25



Technical Study Scope

□ Nov 2014: Board-directed Technical Study to:

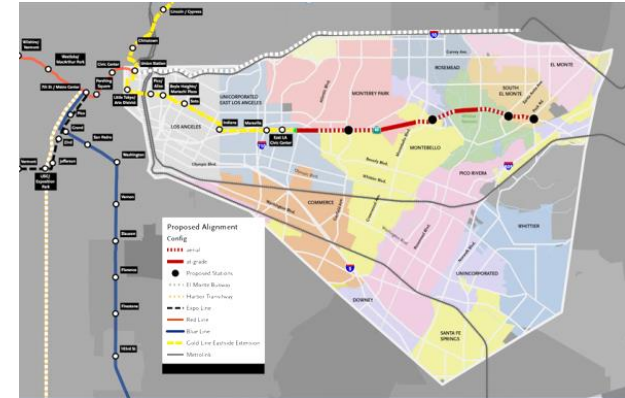
✓ Address Agency Comments regarding the SR 60 North Side Design Variation (NSDV) LRT Alternative

- US Environmental Protection Agency (USEPA)
- US Army Corps of Engineers (USACE)
- California Department of Transportation (Caltrans)
- California Department of Fish and Wildlife (CDFW)
- Southern California Edison (SCE)

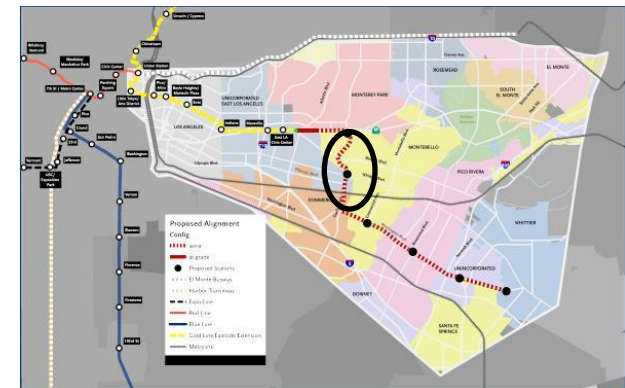
✓ Eliminate Aerial on Garfield Ave between Via Campo and Whittier Bl.

✓ Identify a New North/South Connection to Washington Blvd.

✓ Explore Feasibility of Operating Both SR 60 and Washington Blvd. Alternatives

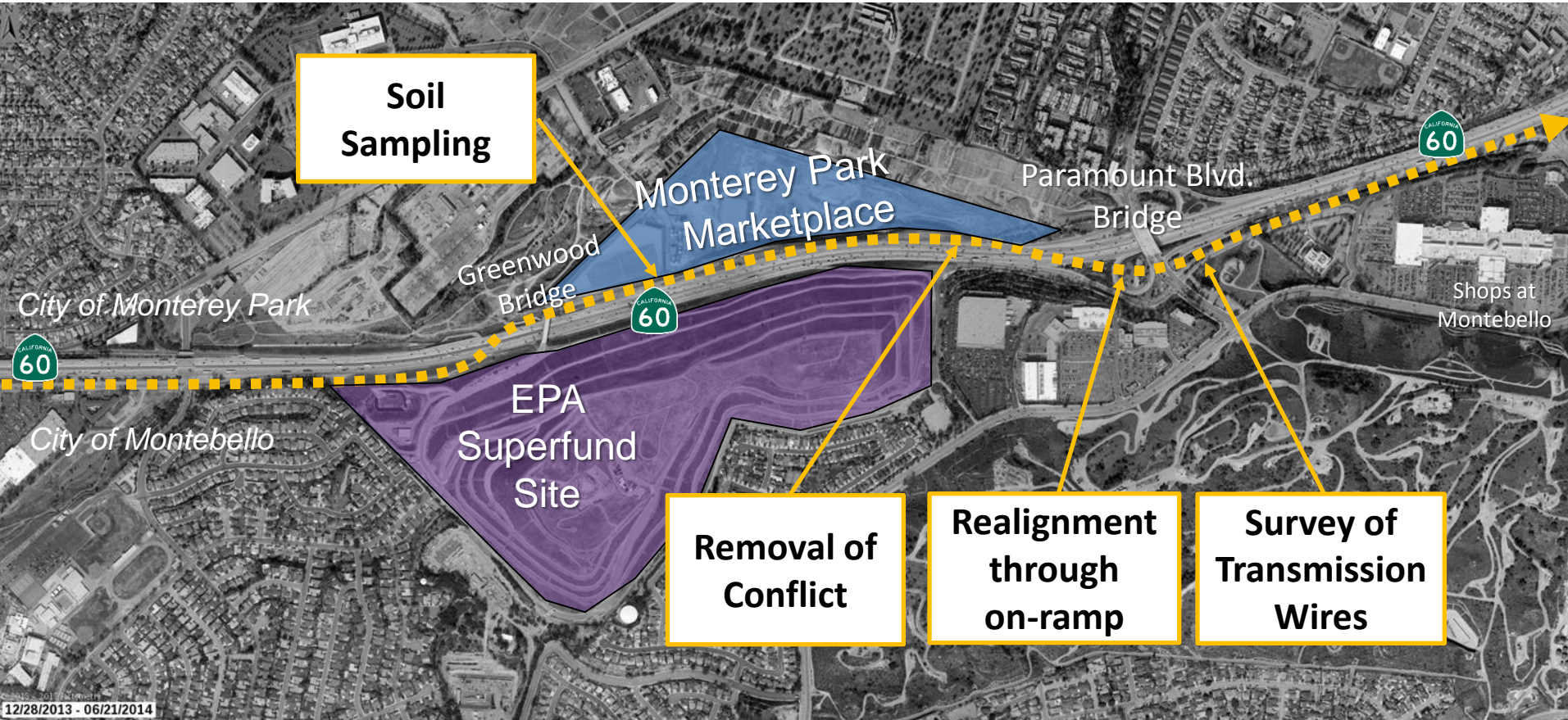


SR 60 NSDV Alternative

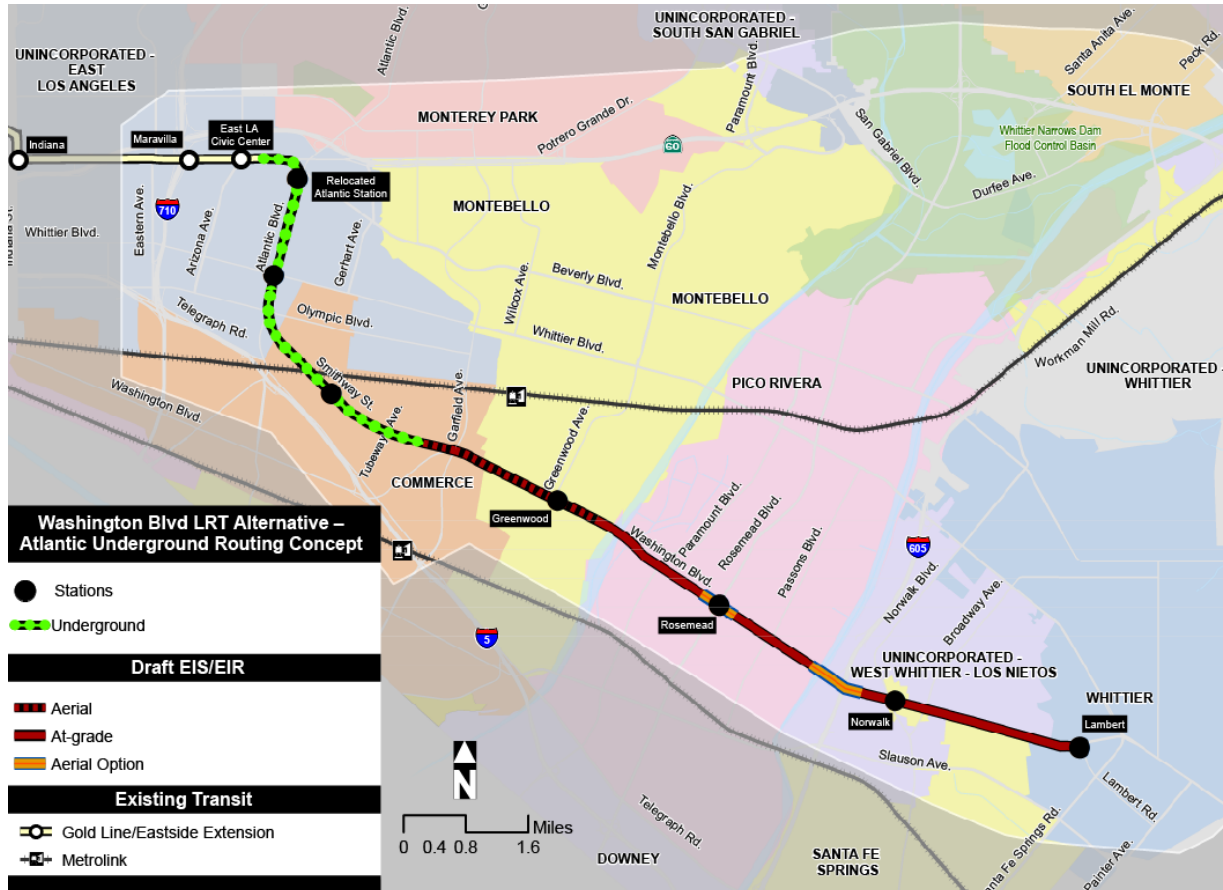


Washington Blvd Alternative via Garfield Aerial

SR-60 NSDV Alternative: No major Resource Agency issues with resuming environmental review

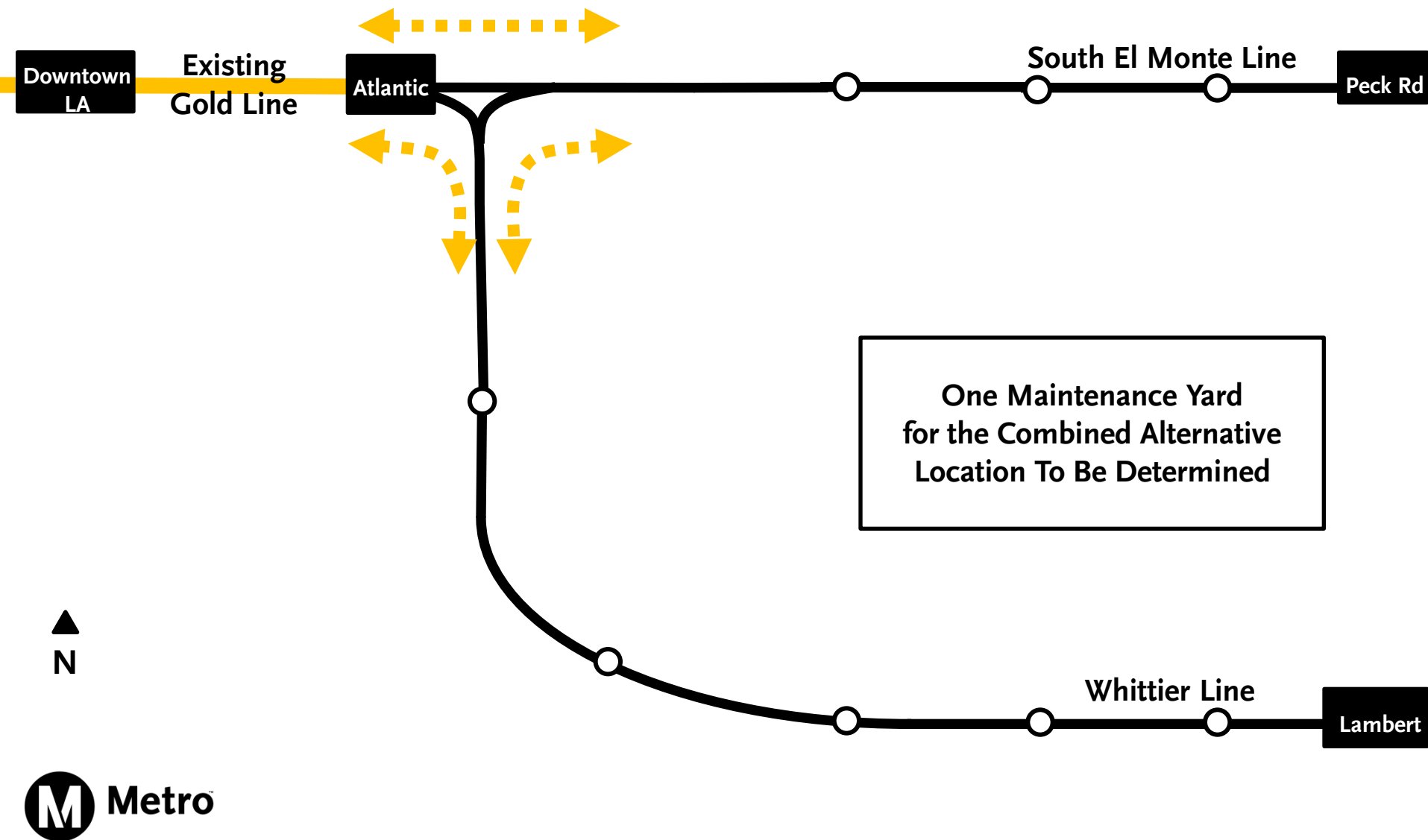


Atlantic Below Grade is recommended as the new Washington Alternative



- 2.8 mile below grade
- Metro Stations
 - Atlantic/Whittier
 - Commerce Citadel
- Potential Maintenance site in eastern Commerce
- **Strong Community Support**

Operating both segments (SR 60 and Washington Blvd.) is feasible, but will require additional infrastructure



The Eastside Phase 2 Technical Study presents the following recommendations

- APPROVE an updated Project Definition for Environmental Clearance, including three alternatives:**
 - ✓ SR 60 North Side Design Variation LRT Alternative
 - ✓ Washington Boulevard Alternative with Atlantic Below Grade
 - ✓ Combined Alternative with both SR 60 and Washington Boulevard via Atlantic Segments
- Environmental clearance to be re-initiated following Board approval of updated Project Definition.**