

CRENSHAW/LAX
TRANSIT PROJECT
BUSINESS SOLUTION CENTER



Supporting local business as we build.

Metro Pilot Business Solution Center Expansion Analysis

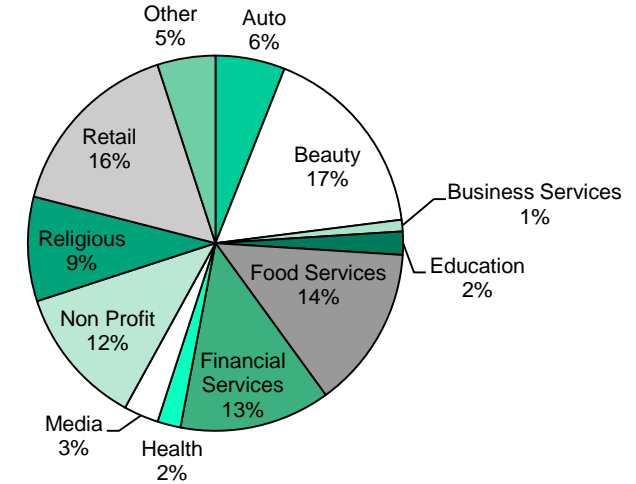


Item #39
Construction Committee
October 17, 2019

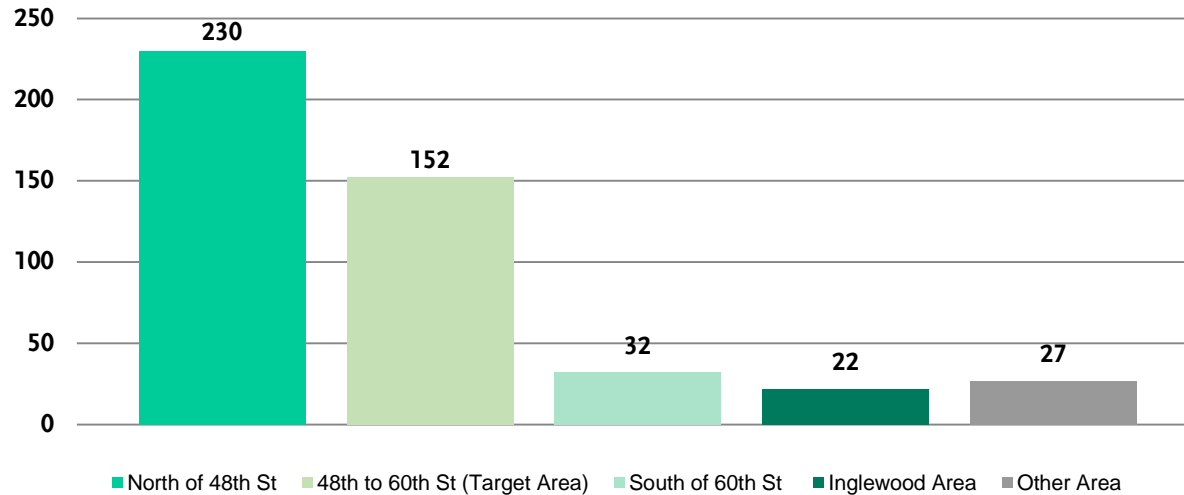
Measurable Outcomes

Since the launch of the Pilot Crenshaw/LAX BSC in late 2014, small business clients have represented a diverse group of small “mom and pop” businesses.

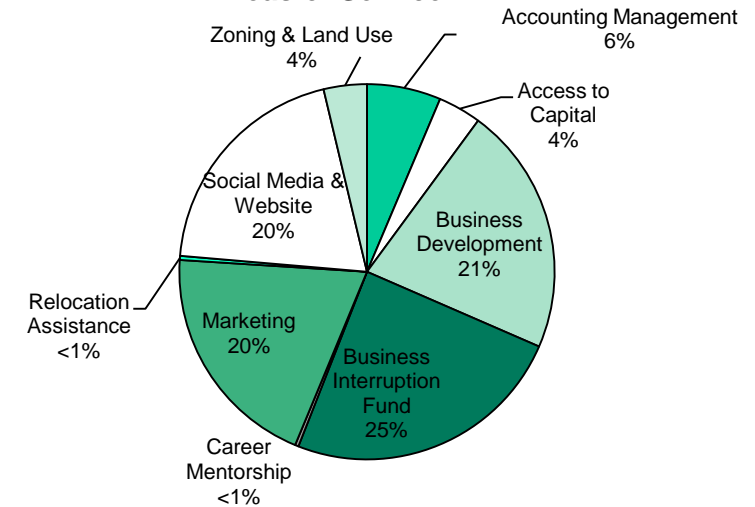
Clients by Industry Type



Businesses Contacted by Location



Areas of Service





“Through the Metro BSC, I was able to attend informative workshops and received direct assistance in website development, mobile and search engine optimization, accounting and QuickBooks. The BSC staff has made a great difference toward helping me sustain and grow Ride On! Bike Shop/Co-op.”

Ade E. Neff, Owner
Ride On! Bike Shop/Co-op



Metro

Schedule of Measure M Construction

Measure M Light Rail Projects Schedule

- 4 - Pillar Projects
- Other Measure M Light Rail Projects
- 4-Pillar or Other Measure M Projects

Gold Line Foothill Extension to Claremont
(with ability to extend to Montclair)

Sepulveda Pass Transit Corridor Phase 1

East San Fernando Valley Transit Corridor

West Santa Ana Branch Transit Corridor to
Downtown LA - Segment 1

Green Line Extension to Torrance

Sepulveda Pass Transit Corridor Phase 2

Gold Line Eastside Extension Phase 2 - Corridor 1

West Santa Ana Branch Transit Corridor to
Downtown LA - Segment 2

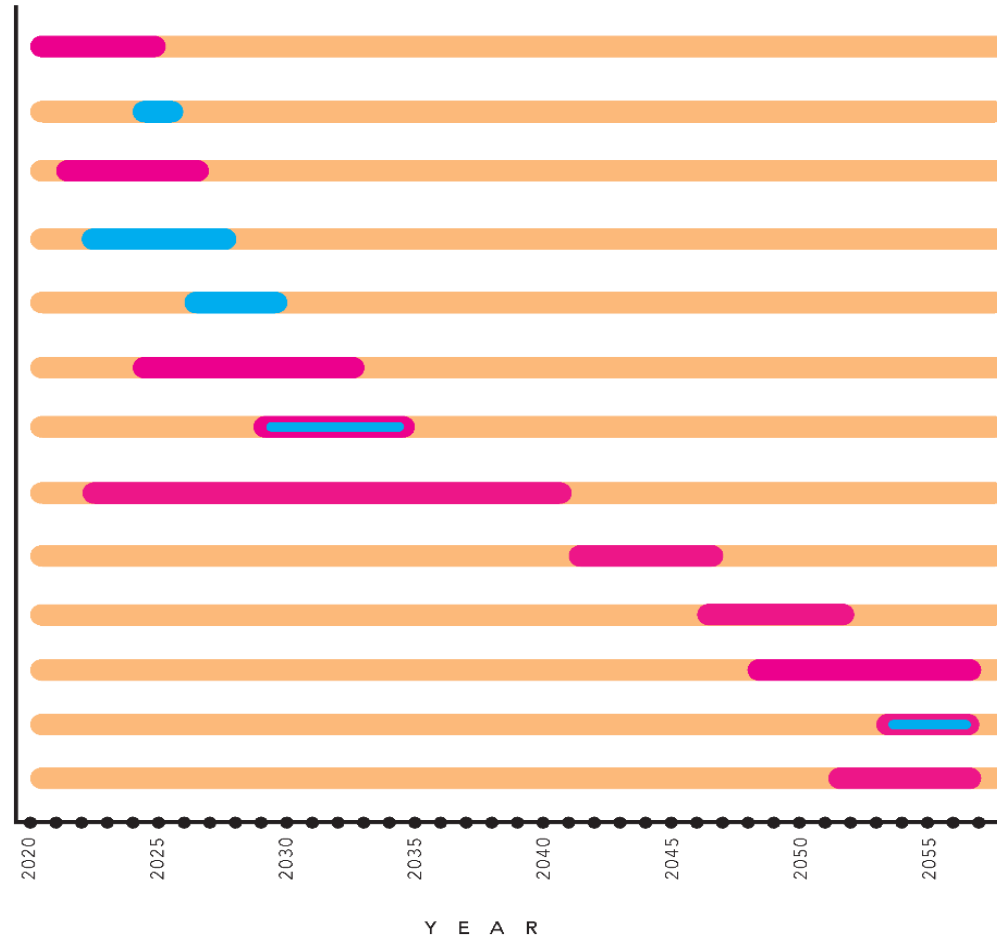
Crenshaw Northern Extension

Green Line Extension to Norwalk

Sepulveda Pass Transit Corridor Phase 3

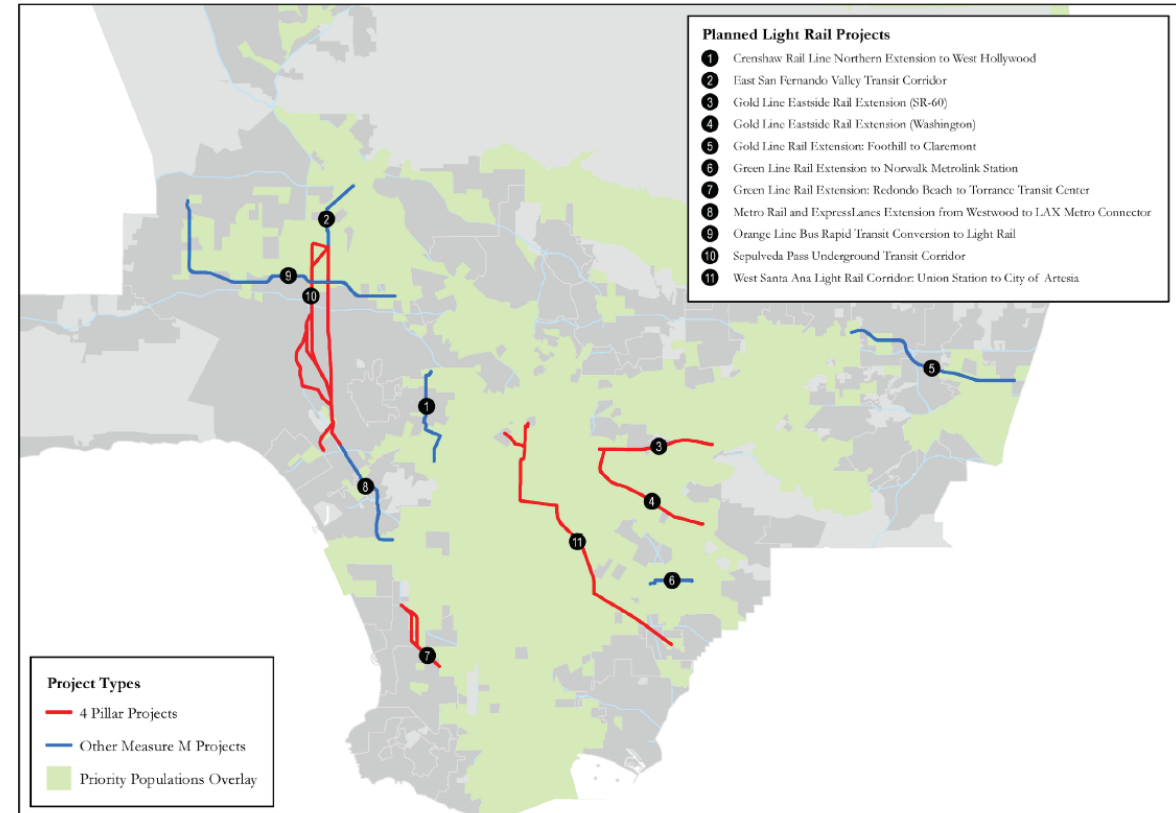
Gold Line Eastside Extension Phase 2 - Corridor 2

Orange Line Conversion to Light Rail



Analysis Method – Disadvantaged Communities (Priority Population Areas)

- Use of the California Environmental Protection Agency's (CalEPA) criteria for identifying Priority Population investment areas.
- Criteria includes disadvantaged and low-income considerations in its criteria.
- Population areas provide a method to identify the region's most vulnerable communities.

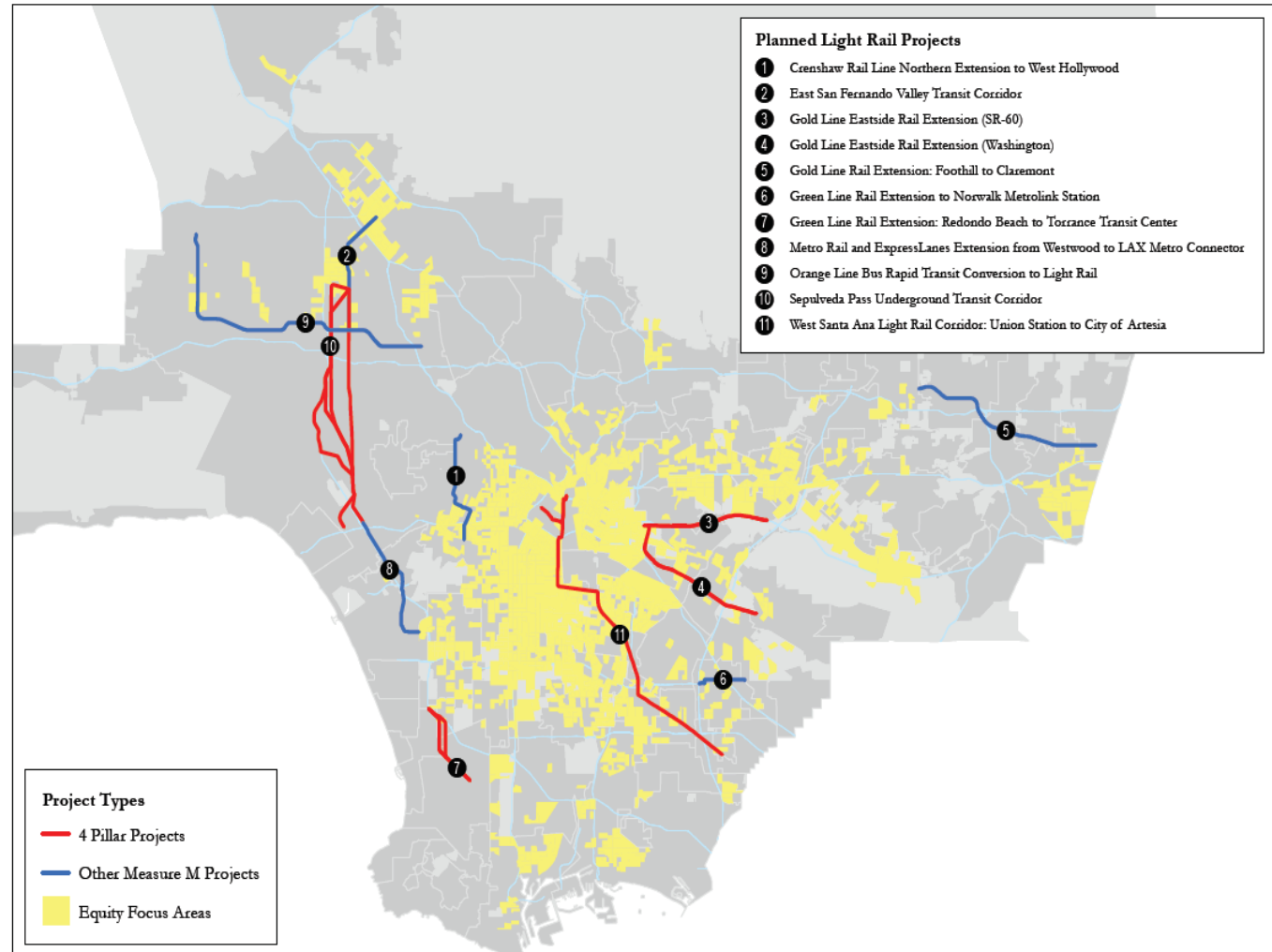


Metro Business Solution Center Analyses

Source: Chen Ryan Associates

Analysis Method – Equity Focus Areas

- Household income
- Race/ethnicity
- Household with low vehicle ownership



Metro Business Solution Center Analysis

Source: Chen Ryan Associates

Expansion Approach

- Phased implementation
- "Four Pillar Projects"
- Incremental funding
- Resource scaling
- Focus on pre and post construction operations

Thank You