

WEAPONS DETECTION ONBOARD RAIL SYSTEM

Summary of Current Findings

Metro Transit Security (MTS) Officers deployed to support at select stations for the extended concealed weapons screening pilot have been trained in using the equipment, its functionality, troubleshooting procedures, and calibration protocols. For the first few weeks of each deployment, deputies from the Los Angeles Sheriff's Department (LASD) were present, which established a higher level of security presence at the four stations so far. Metro Ambassadors and TAP Blue Shirts were also present, speaking to and assisting riders, which helps create a greater sense of safety and visibility.

Below is a summary of findings at the four selected stations; the remaining stations are not identified for operational security purposes, in accordance with 49 CFR § 1520.5 (b)(8)(i).

Norwalk and San Pedro

Deployments at Norwalk and San Pedro stations concluded on June 29, 2025. The duration of each deployment was four hours per day, at undisclosed times. During these deployments, TSOs identified a few bladed objects per shift, including pocket knives, box cutters, and multi-tools, all of which were disclosed by patrons during secondary screenings initiated by OpenGate system alerts; passengers identified these items as tools that are kept out of reach. There were some instances involving knives with blades exceeding the legal length of two inches. When this occurred, patrons were directed to either return the object to their vehicles, discard the item in a wastebasket, or choose a different method of travel. When a weapon was deemed to be illegal, staff notified the respective law enforcement agency and requested a response. Overall, officers noted consistent patron compliance, informal comments in support, and screening operations allowed customer interaction without significant operational friction.

The tables below provide brief findings from the completed deployments at Norwalk and San Pedro, respectively.

Norwalk C Line Station	
April 28 - June 29, 2025	
Event/Metric	Average per Shift
Illegal Firearms Detected	0
Bladed Objects Encounters	5
Individuals Declining Screening	2
Individuals Who Missed Their Scheduled Trains	2
Secondary Screening Time (seconds)	15
Average # of Patrons Screened	711

San Pedro A Line Station	
April 28 - June 29, 2025	
Event/Metric	Average per Shift
Illegal Firearms Detected	0
Bladed Objects Encounters	2
Individuals Declining Screening	2
Individuals Who Missed Their Scheduled Trains	2
Secondary Screening Time (seconds)	13
Average # of Patrons Screened	525



Concealed Weapons Screening at Norwalk Station (Left & Center); Screening at San Pedro (Right)

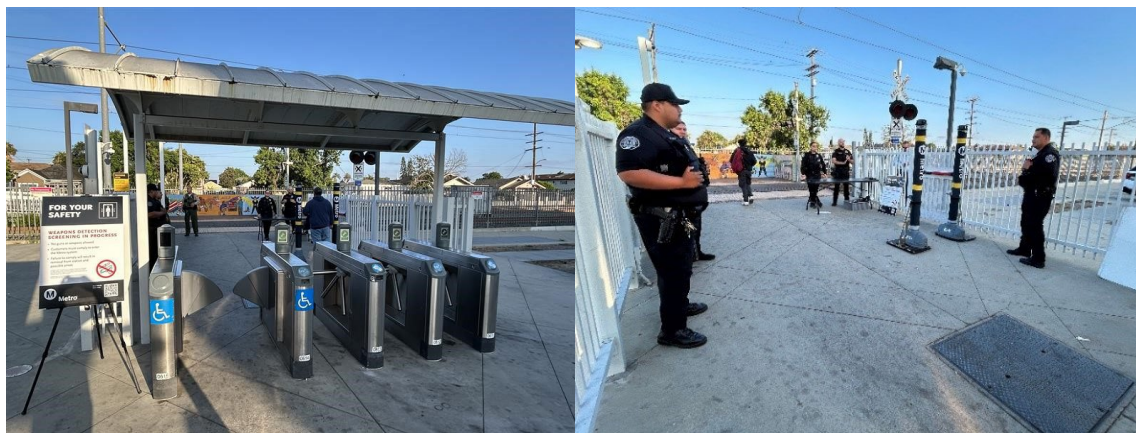
For additional information on the key metrics, definitions, purpose, and results of the concluded Norwalk and San Pedro station screening deployments, see Attachment C.

Compton

On June 30, 2025, the next weapons detection screening began at Compton A Line Station. Similar to the previous two stations, TSOs have identified a few bladed objects per shift so far, all of which were disclosed by patrons during secondary screenings triggered by OpenGate system alerts. Additionally, officers have noted consistent patron compliance, as well as informal comments in support, and screening operations have allowed for customer interaction without significant operational friction.

The table below presents the preliminary findings collected at this station.

Compton A Line Station	
<i>June 30 - August 29, 2025</i>	
Event/Metric	Average per Shift
Illegal Firearms Detected	0
Bladed Objects Encounters	6
Individuals Declining Screening	4
Individuals Who Missed Their Scheduled Trains	3
Secondary Screening Time (seconds)	12
Average # of Patrons Screened	404



Concealed Weapons Screening at Compton Station

Vermont/Beverly

On July 31, 2025, the weapons detection system screening began at Vermont/Beverly B Line Station.

Vermont/Beverly B Line Station	
July 31 to August 29, 2025	
Event/Metric	Average per Shift
Illegal Firearms Detected	0
Bladed Objects Encounters	5
Individuals Declining Screening	4
Individuals Who Missed Their Scheduled Trains	3
Secondary Screening Time (seconds)	12
Average # of Patrons Screened	429

Notably, on August 11, TSOs were utilizing the new weapons detection system when they identified and apprehended an individual carrying an unloaded firearm. This swift and decisive action, resulting in the suspect's arrest by LAPD, highlights the system's ability to act as a crucial defense layer, deterring potential threats and contributing to the safety of passengers and staff. This incident reinforces the importance of a multi-layered security approach, which includes technology, trained personnel, and partnerships with law enforcement agencies. This initial success provides evidence of the system's effectiveness and its vital role in Metro's commitment to a safe transit environment.



Firearm Detected at Vermont/Beverly Station