

**A Line Opening  
&  
Cleanliness Program Update**

# A Line Reopening

## A Line Opening - November 2, 2019

- A Line Service Levels: 6 minute headway during peak times; 12 minute headway during off-peak

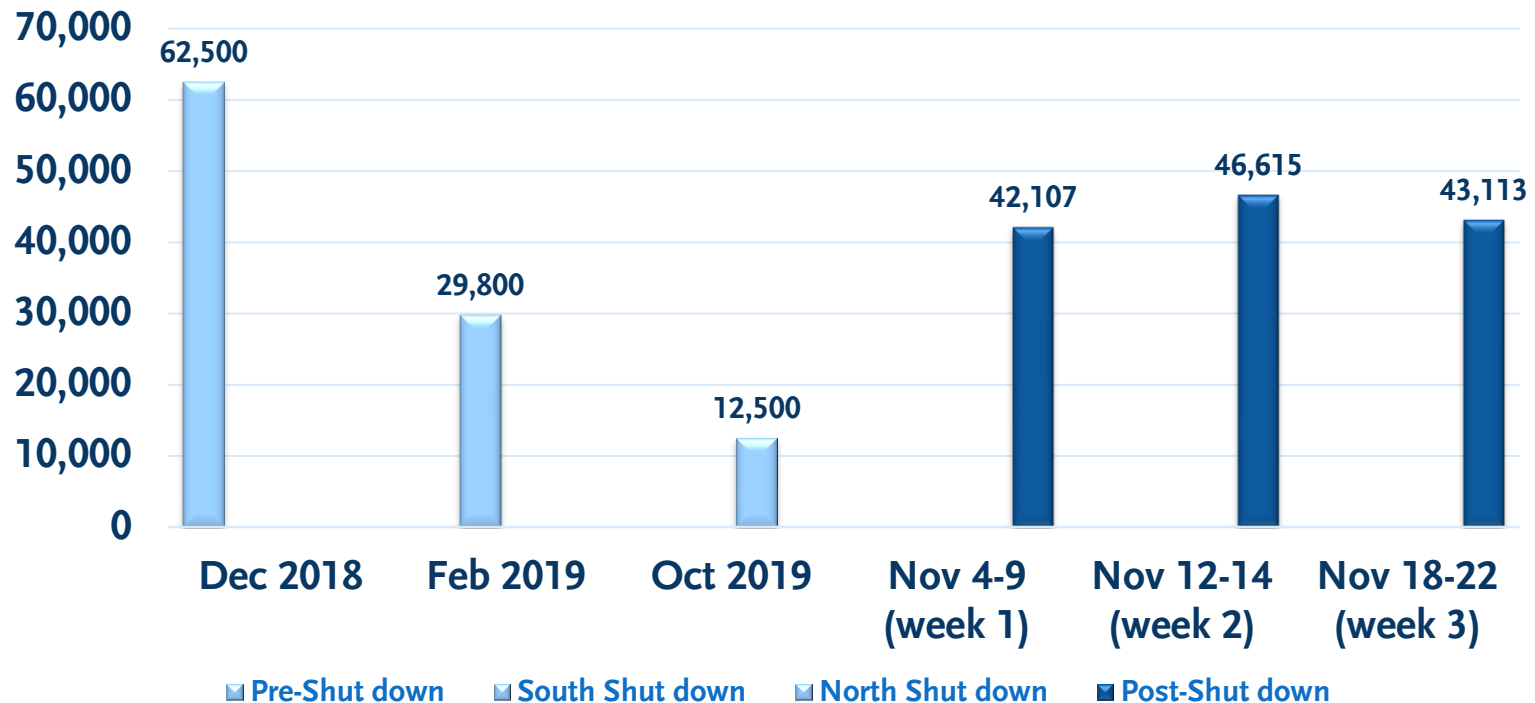
## Service Enhancements

- Line 456: Launched as a 6 month pilot utilizing the Line 860 route between DTLA and Long Beach
- Flower Street Bus Only Lane: Under evaluation for another 5 months



# A Line Weekly Average Ridership

## A Line



**A Line post-shutdown ridership:  
gradually increasing**

# A Line – Operations Initiatives

## Deployed Task Force

- Rail Fleet Services technicians
- Rail Operations supervisors
- Maintenance & Engineering signals and traction power technical personnel
- Strategically placed staff along the trunk during peak hours to quickly respond issues on A Line & Expo

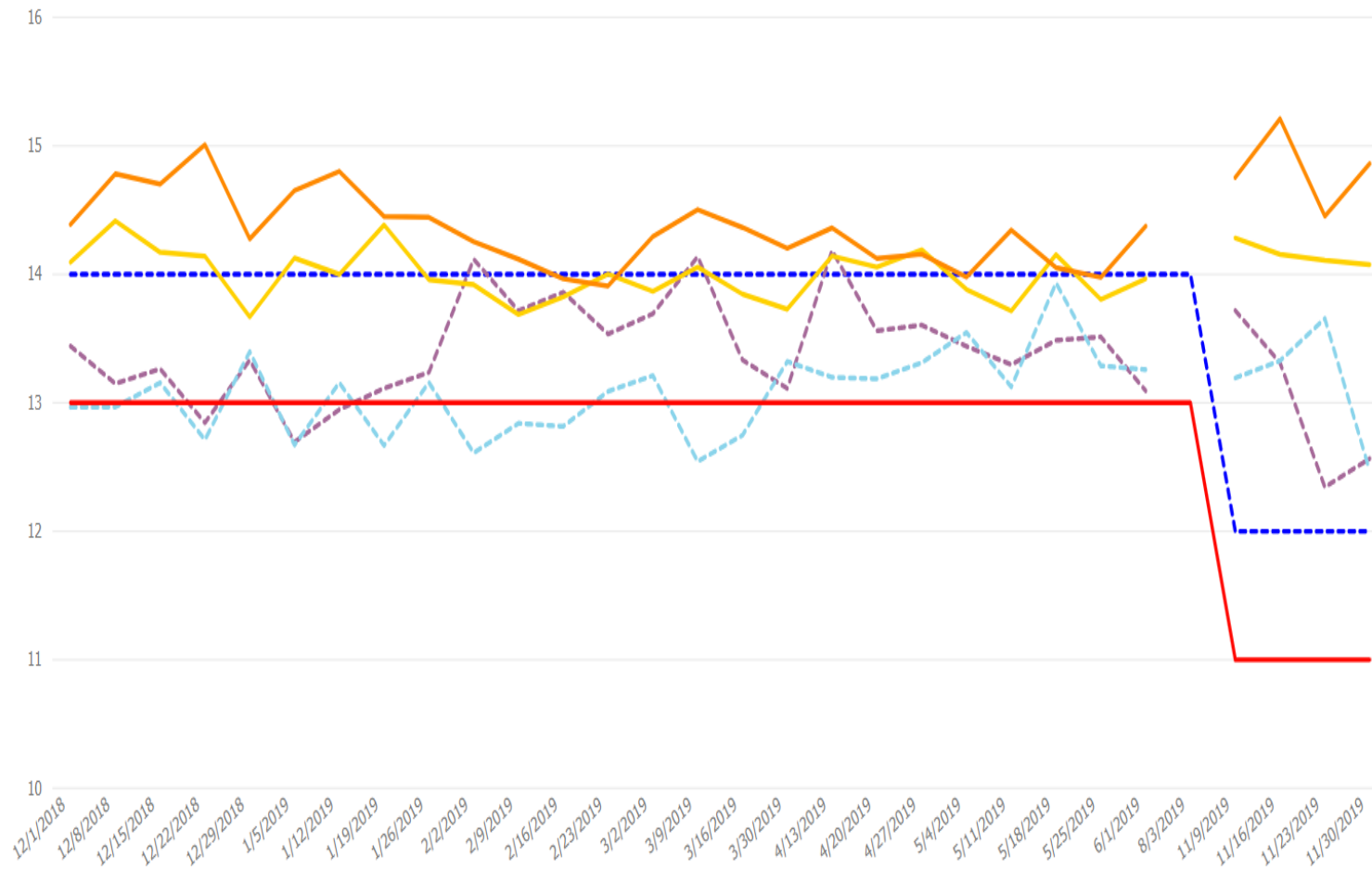
## Work Program

- Review entire A Line rail car fleet

# A Line Average Run Time – Weekly

A Line Average Runtime: 7th/Metro - Washington, DX Only

--- North - Sched Run Time --- NORTH\_AM - - - North\_PM --- South - Sched Run Time --- South\_AM --- SOUTH\_PM



**Northbound:**

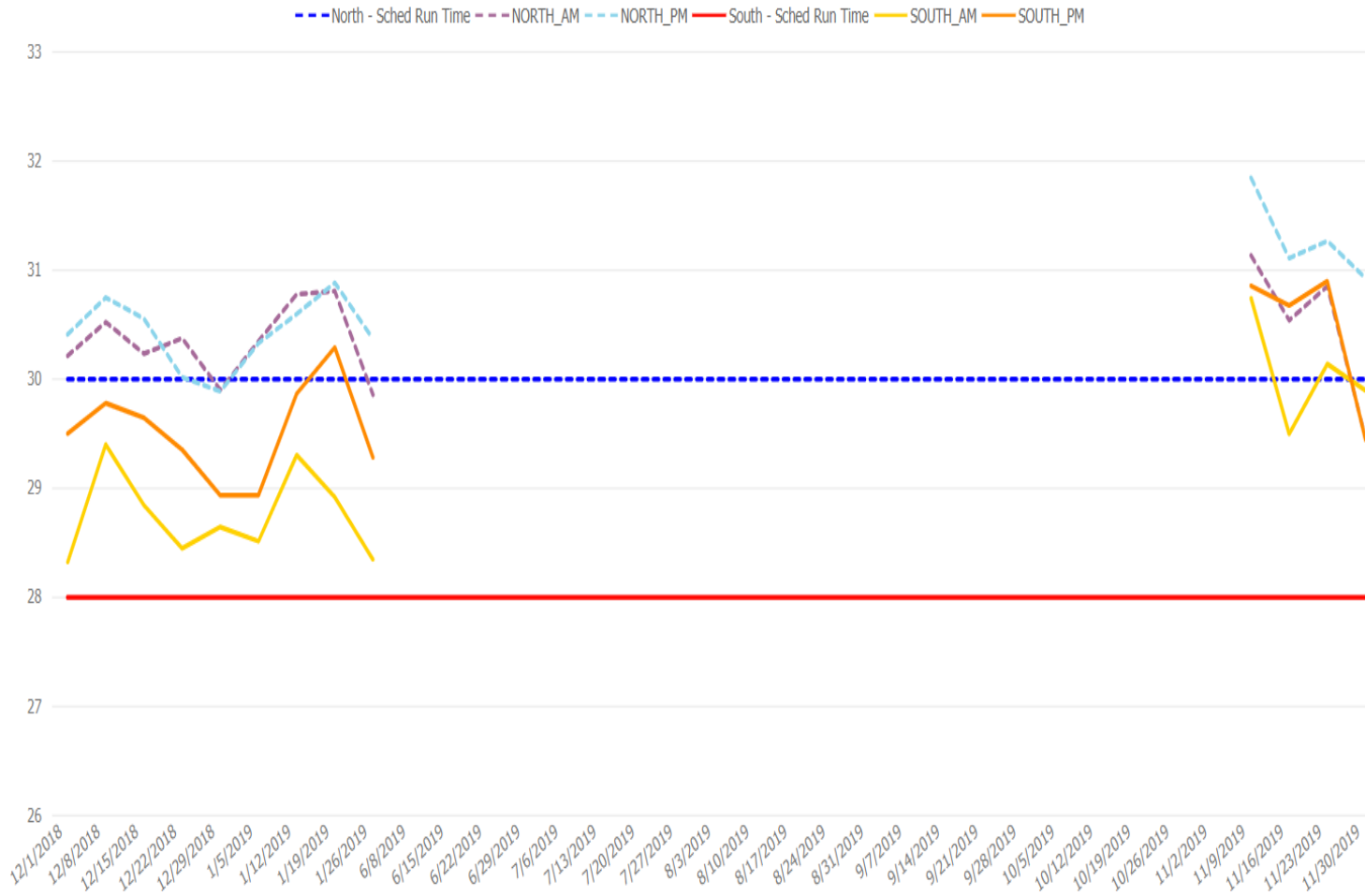
- Close to schedule

**Southbound:**

- Mixed results

# A Line Run Time – Weekly Analysis

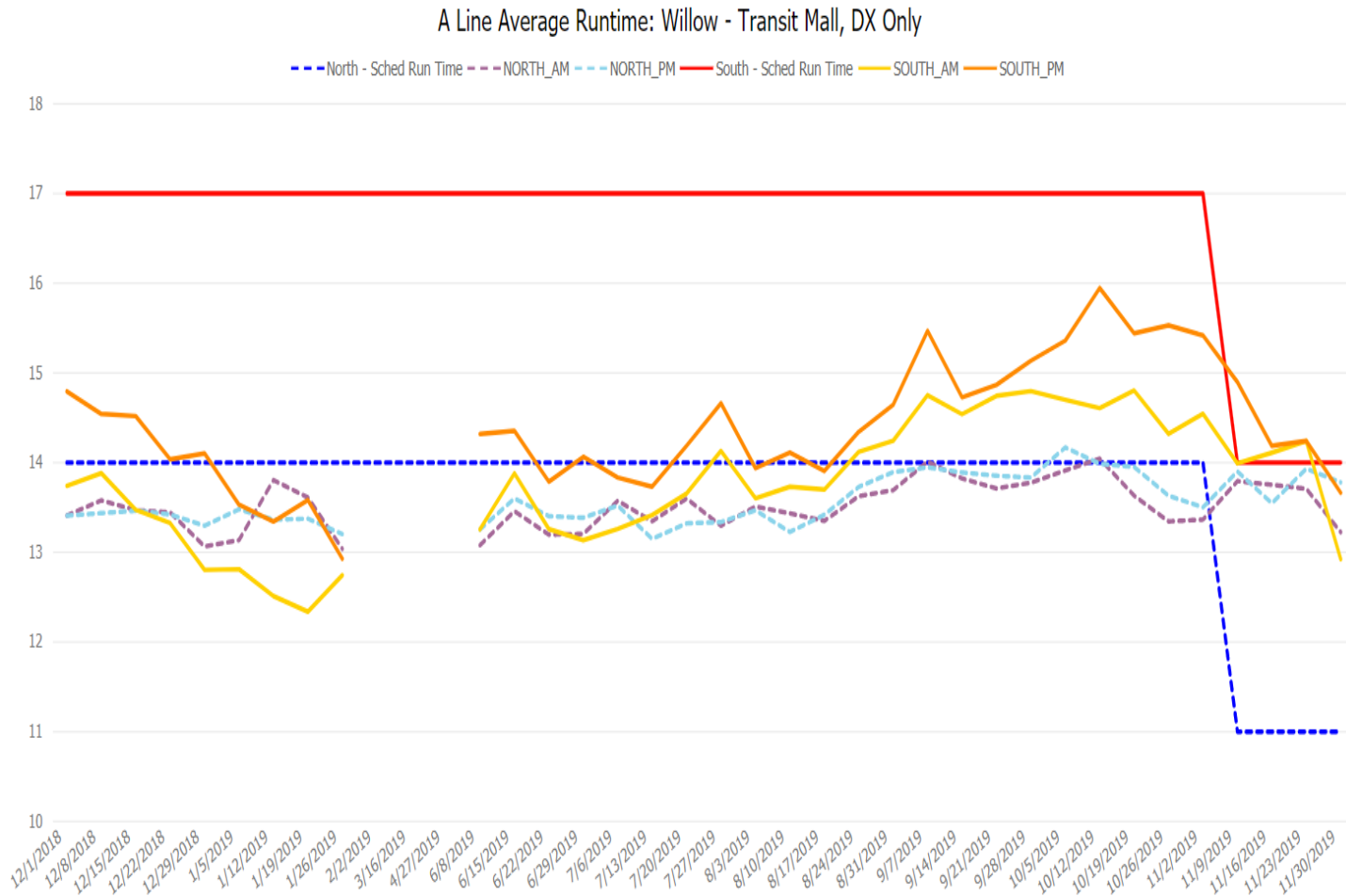
A Line Average Runtime: Washington - Willow, DX Only



Washington – Willow Segment

- Running times above expected

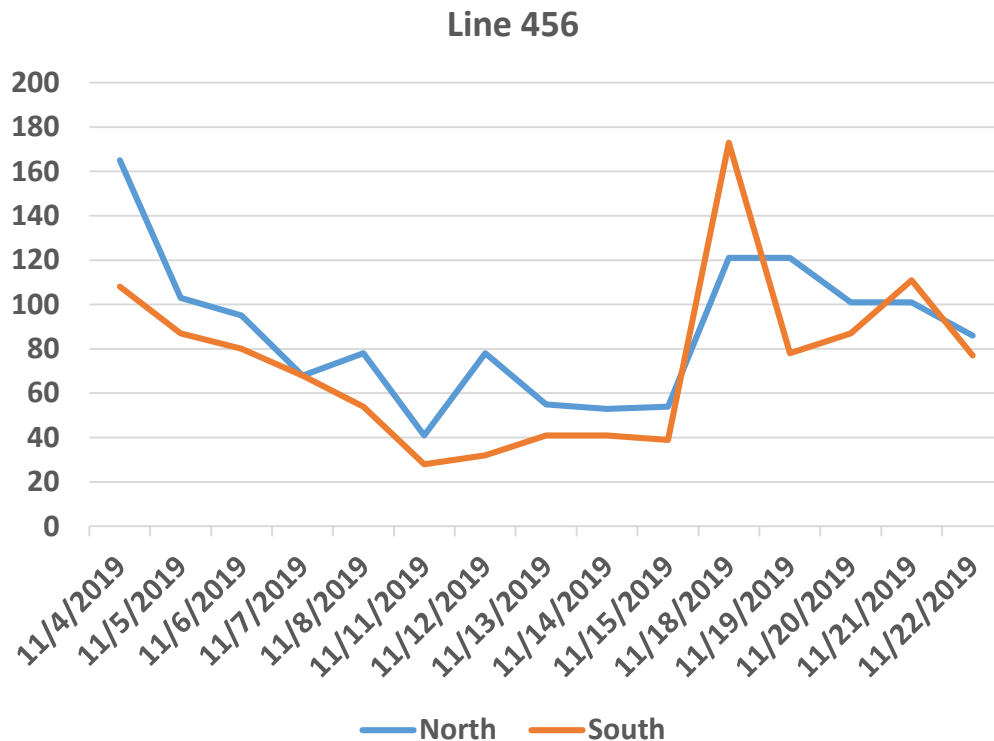
# A Line Run Time – Weekly Analysis



## Long Beach

- Improved travel times in Long Beach as a result of improvements to the signaling system by City of Long Beach
- Southbound service is slower than expected

# Line 456 Ridership – Weekdays



Date	North	South	Average Per Trip
<b>Week 1</b>			
11/4/19	165	108	34
11/5/19	103	87	24
11/6/19	95	80	22
11/7/19	68	68	17
11/8/19	78	54	17
<b>Week 2</b>			
11/11/19	41	28	8
11/12/19	78	32	13
11/13/19	55	41	11
11/14/19	53	41	10
11/15/19	54	39	10
<b>Week 2</b>			
11/18/19	121	173	37
11/19/19	121	78	25
11/20/19	101	87	24
11/21/19	101	111	27
11/22/19	86	77	20

**Early trend: Mixed**



# Cleanliness Program Update

## Ongoing

- Adherence to regularly scheduled cleanliness & maintenance levels
- Continued coordinated efforts with partners to improve shared right-of-way (ROW) cleanliness
- Measure status and report back regularly

# Rail Station & Bus Terminal Cleaning Program

## Daily

- All rail stations are cleaned at a minimum of twice daily, 7 days/week which includes:
  - Empty trash receptacles
  - Spot sweep and mop (floors and stairs)
  - Dust and wipe ticket machines, map cases, handrails, and pylons
  - Elevator inspections and cleaning
  - Odor mitigation

## Weekly

- All heavy/light rail stations are pressure washed at a minimum of once per week which includes the use of a heated and high-pressure water spray to clean and disinfect surfaces and structures:
  - Grime
  - Dirt
  - Gum
  - Human waste



# Rail & Bus Equipment Cleaning Program

## Daily Exterior

- Equipment washed every other day or as needed
- Division supervision performs daily cleanliness inspections

## Daily Interior

- Thoroughly blowout/ vacuum interior
- Sweep and mop floors
- Remove graffiti
- Windows and stanchions wipe down
- Clean and or replace seat inserts
- Remove gum

## Bi-Weekly

- Treatment with pesticides

## Monthly

- Interior deep cleaning and detailing: including floor scrubbing, fabric seat insert deep cleaning or replacement, panel scrub, and paint touch-ups
- Replace window vandal film as required



# ROW, Station, Facilities and Lots Cleaning Program

## Daily & As-Needed

- Graffiti abatement services at Rail Stations

## Weekly

- Landscape and irrigation maintenance
- Trash and weed removal at Rail Stations
- Waste management services
- Power sweeping services

## Monthly

- Glass and stainless steel anti-graffiti film replacement services
- Pest and bird control services



Before – A Line



After – A Line



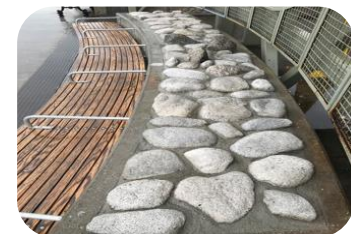
Before – Red Line



After – Red Line



Before – Green Line



After – Green Line

# ROW, Station, Facilities and Lots Cleaning Program

## Quarterly

- Herbicide application, trash, weed and graffiti removal along the ROW operating envelope

## As-Needed Services In Addition to Regularly Scheduled Maintenance

- Homeless encampment clean-up
- Artificial ivy installation as a graffiti deterrent on an as-needed basis
- Tree trimming services
- Fencing repairs
- Graffiti abatement along the ROW
- Glass replacement services
- Red and Gold Line tunnel washing services



# Path Forward - Partnerships & Collaborative Joint Efforts

## Cleanliness

- Continue cooperation and collaboration with external partner agencies to improve the overall cleanliness conditions of our facilities, equipment, and along shared ROWs & Railroads
- Continue to prioritize multi-agency ROW clean-up efforts using the current clean-up encampment procedure and documenting lessons learned
- Continue to rely on Metro Community Service Workers to help keep our system clean and collaborate with Caltrans for potential program enhancements

## Graffiti

- Provide partner agencies and private property owners information regarding external mural programs and use of artificial ivy as options for graffiti deterrent