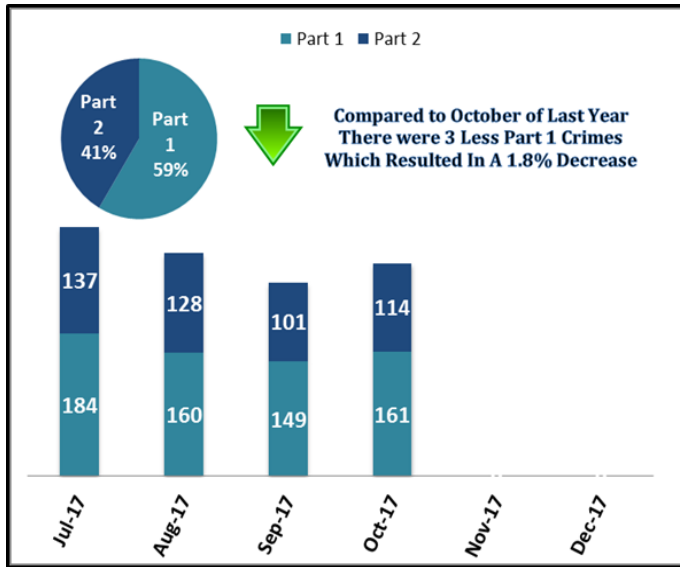


# Key Performance Indicators

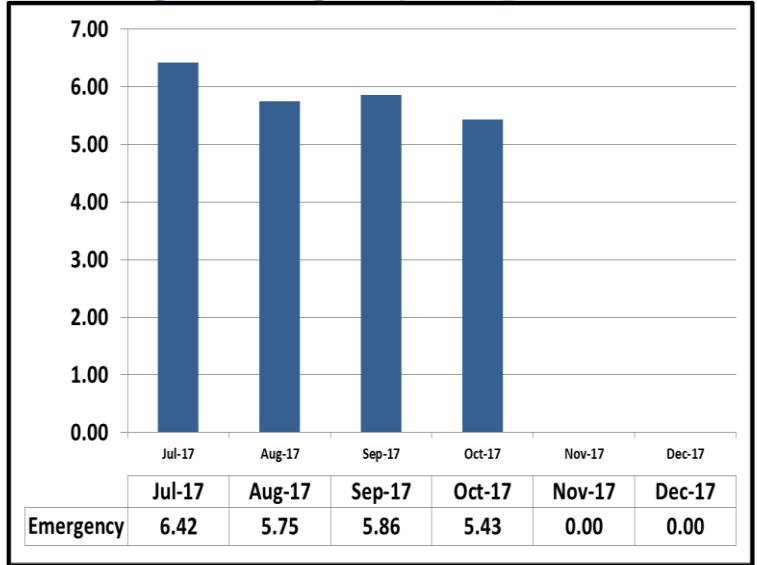
OCOTBER 2017

Attachment C

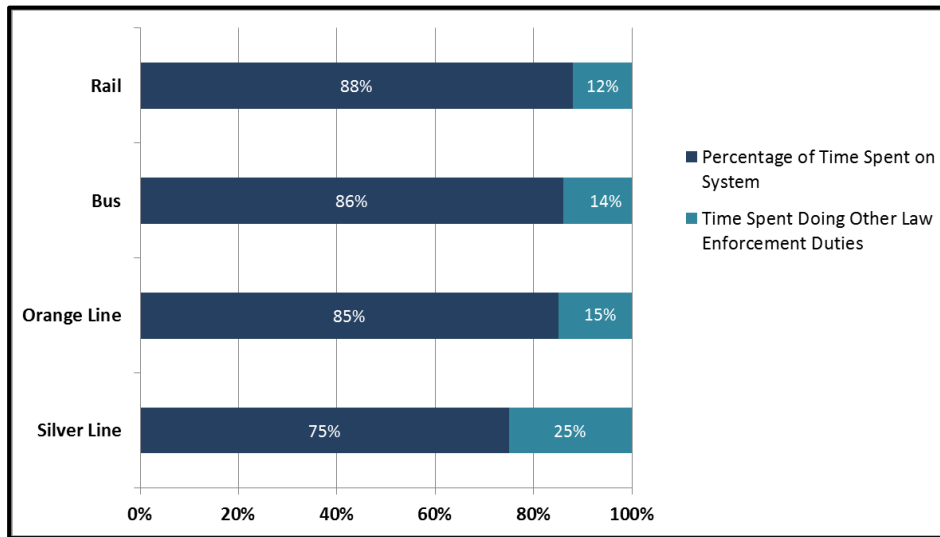
## System Wide Part 1 & Part 2 Crimes



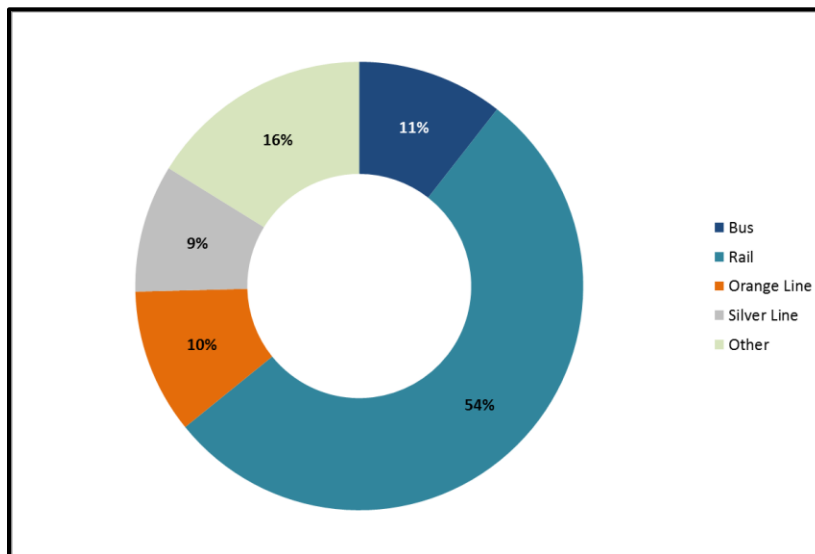
## Average Emergency Response Times



## Percentage of Time Spent on the System



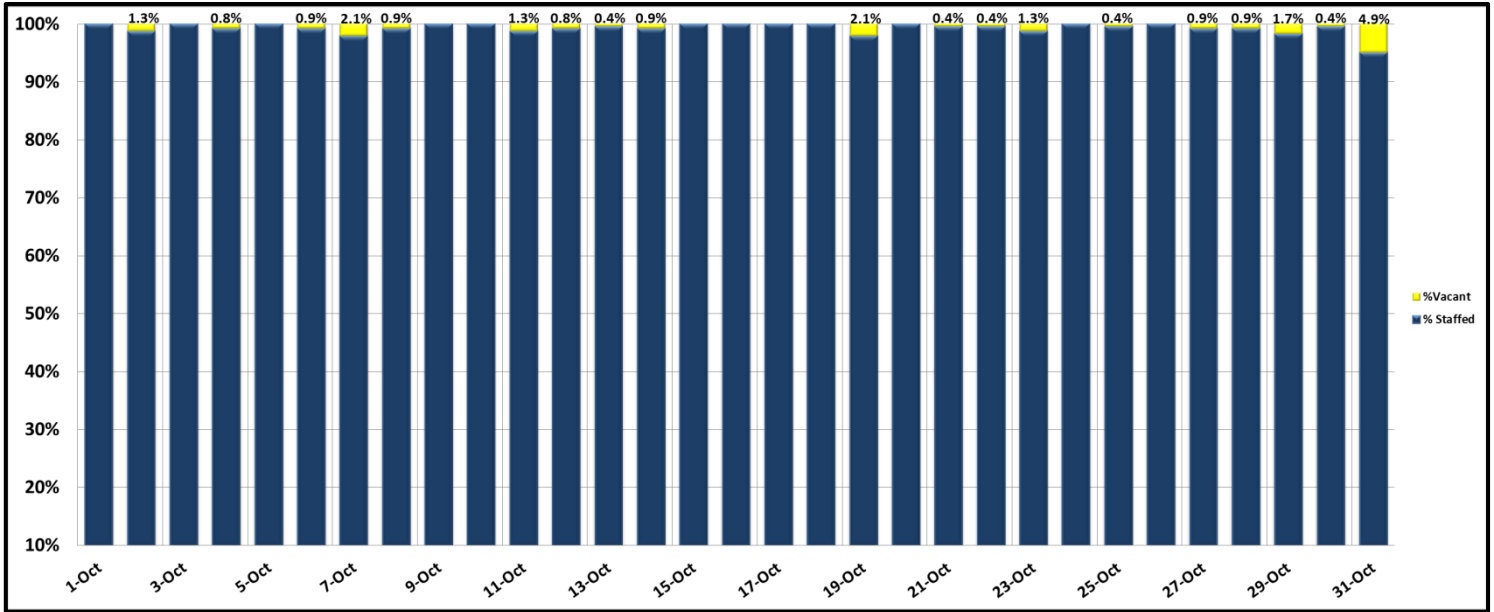
## Percentage of Time Spent on the System as a Whole



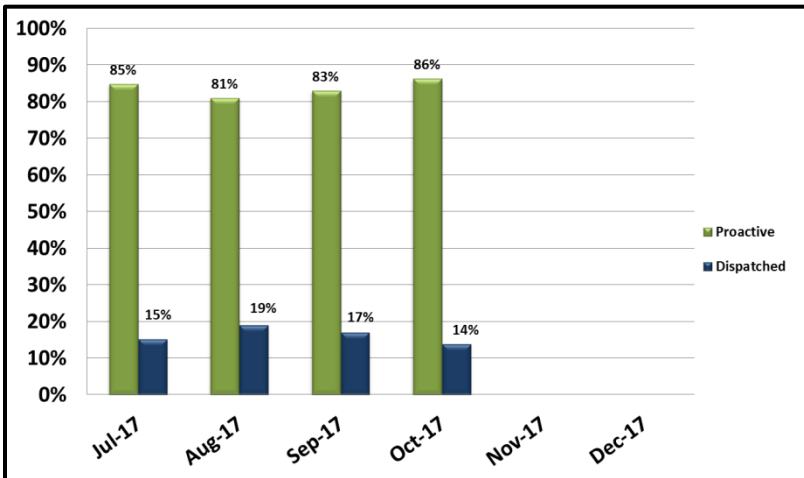
# Key Performance Indicators

## OCTOBER 2017

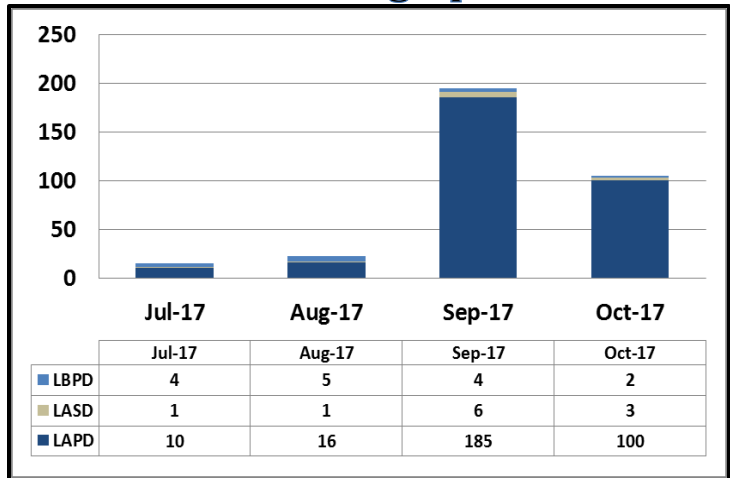
### Ratio of Staffing Levels vs Vacant Assignments



### Ratio of Proactive vs Dispatched Activity



### Grade Crossing Operations



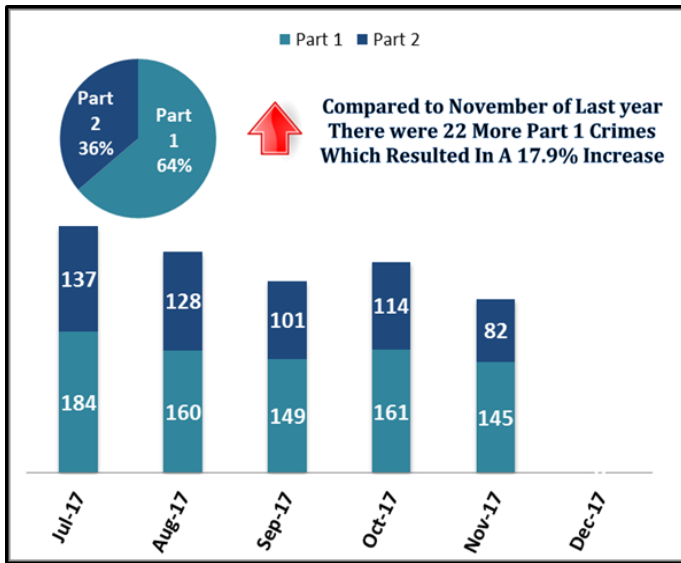
### Grade Crossing Operation Locations October:

1. Washington St (58)
2. Flower St (20)
3. 103<sup>rd</sup> St (8)
4. Wardlow St (1)
5. Long Beach Blvd (1)
6. Exposition Blvd (14)
7. Marmion Way (66)
8. Figueroa St (60)
9. Gold Line Stations (3)

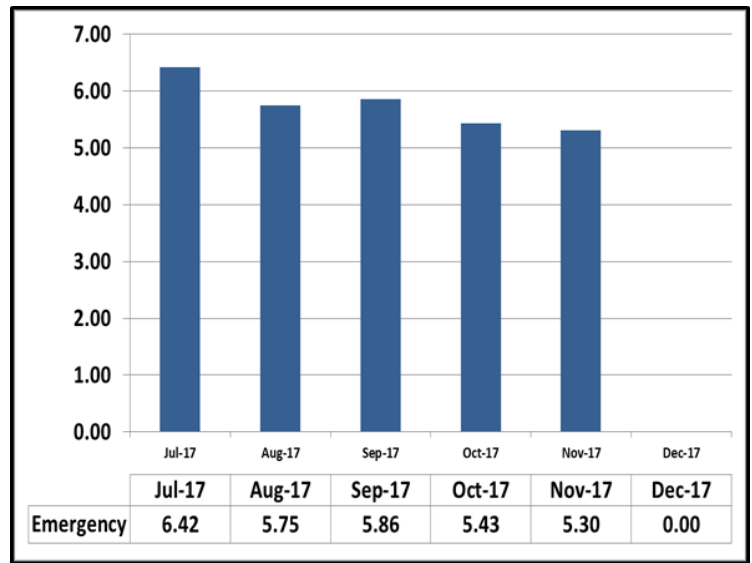
# Key Performance Indicators

NOVEMBER 2017

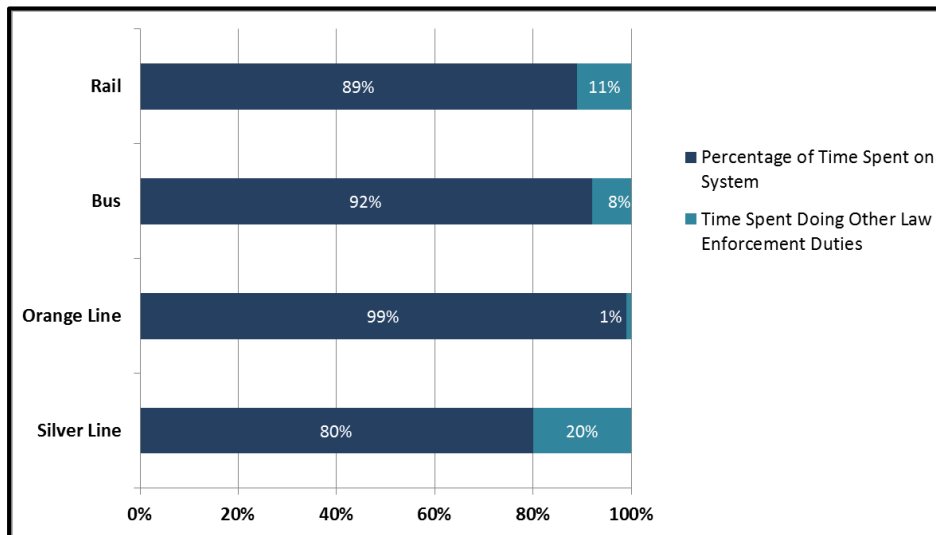
## System Wide Part 1 & Part 2 Crimes



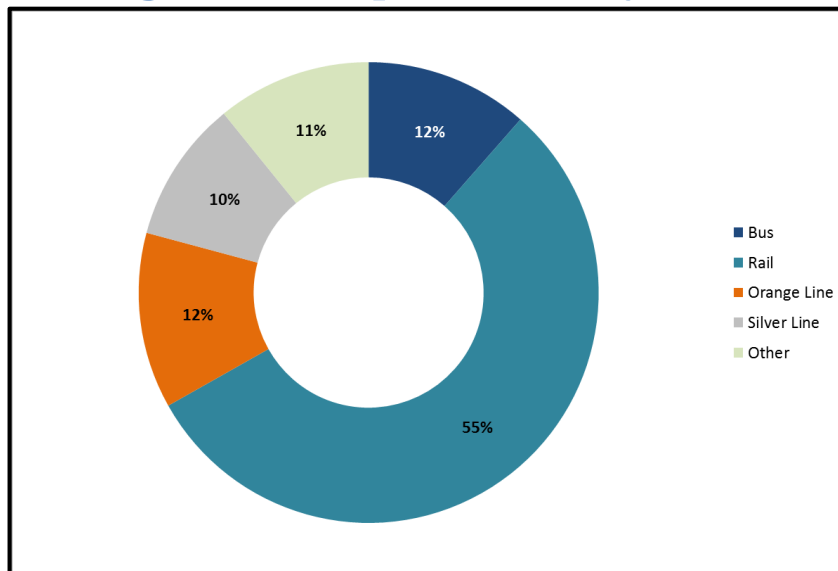
## Average Emergency Response Times



## Percentage of Time Spent on the System



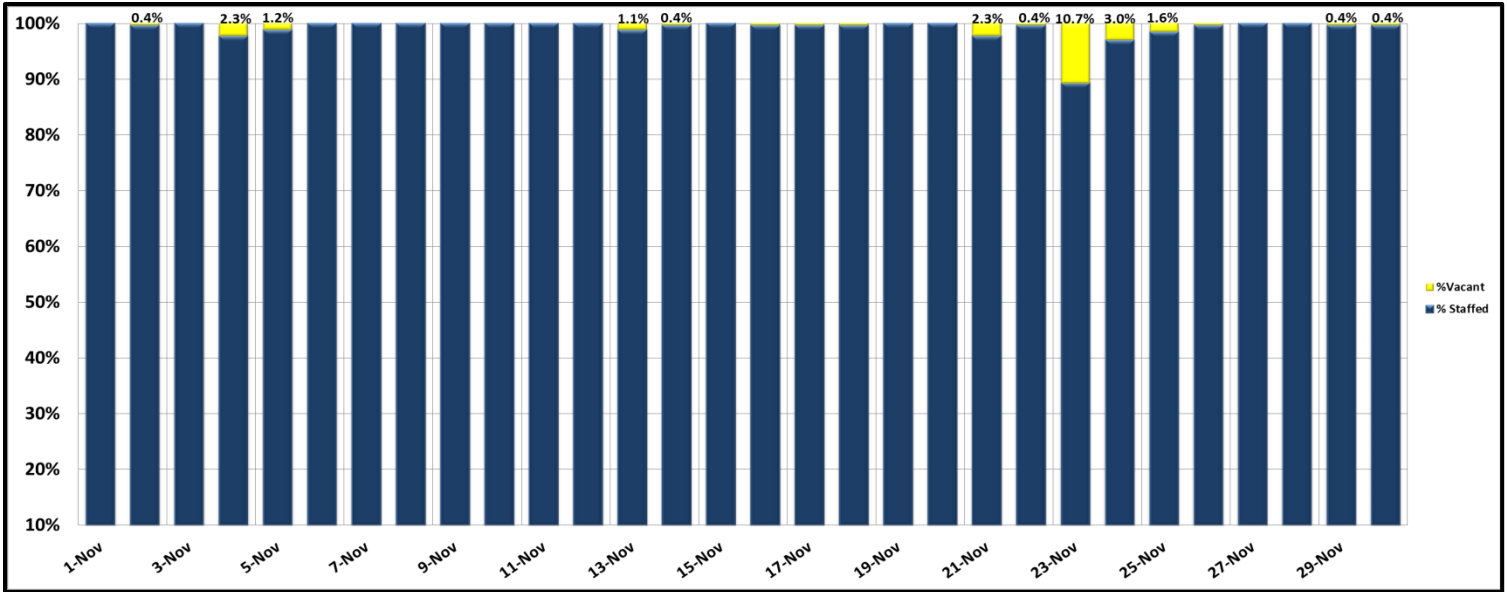
## Percentage of Time Spent on the System as a Whole



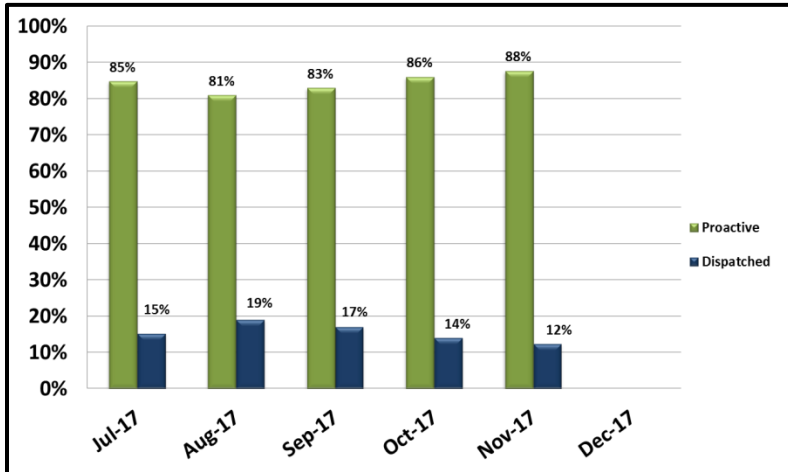
# Key Performance Indicators

## NOVEMBER 2017

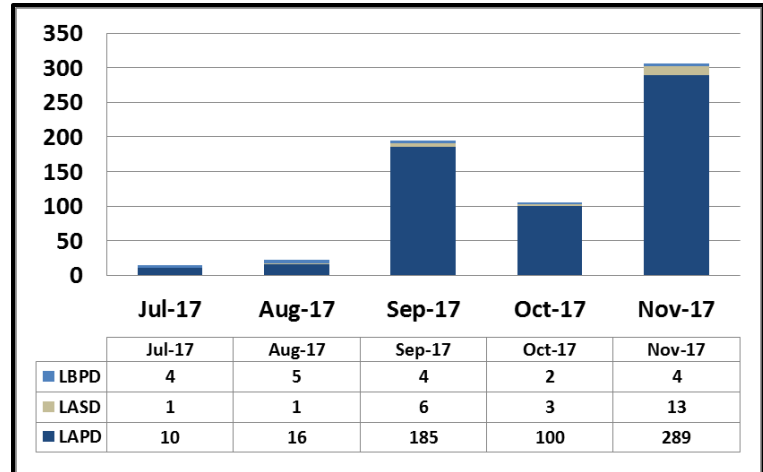
### Ratio of Staffing Levels vs Vacant Assignments



### Ratio of Proactive vs Dispatched Activity



### Grade Crossing Operations



### Grade Crossing Operation Locations November:

1. Washington St (53)
2. Flower St (15)
3. 103<sup>rd</sup> St (9)
4. Wardlow St (1)
5. Long Beach Blvd (1)
6. Pacific Ave & 208<sup>th</sup> st (2)
7. Exposition Blvd (7)
8. Marmion Way (205)
9. Gold Line Stations (13)