

# **December 2017 Monthly Transit Policing Performance and End of Year Summary**

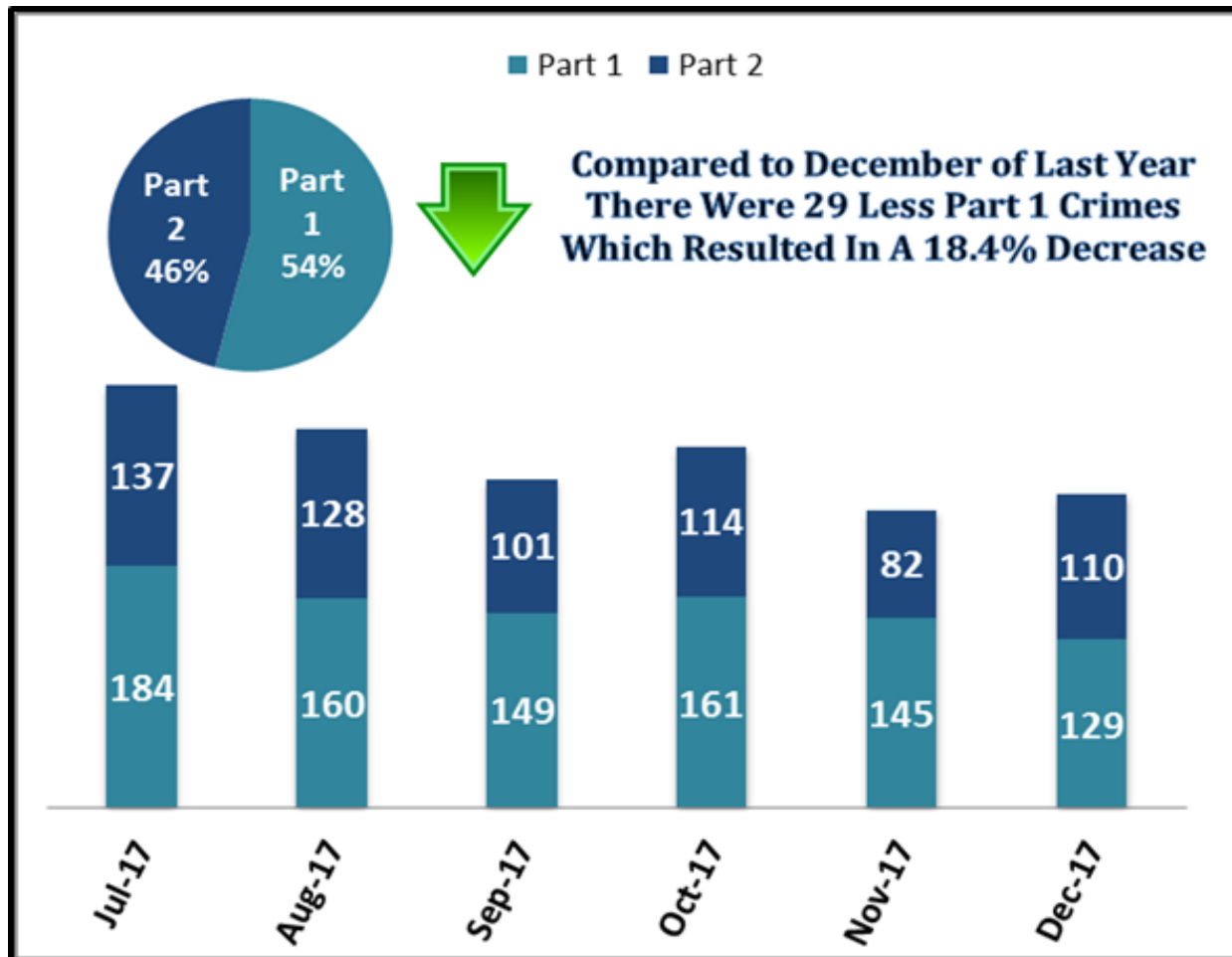
**February 15 ,2018**



**Metro**

# Key Performance Indicators

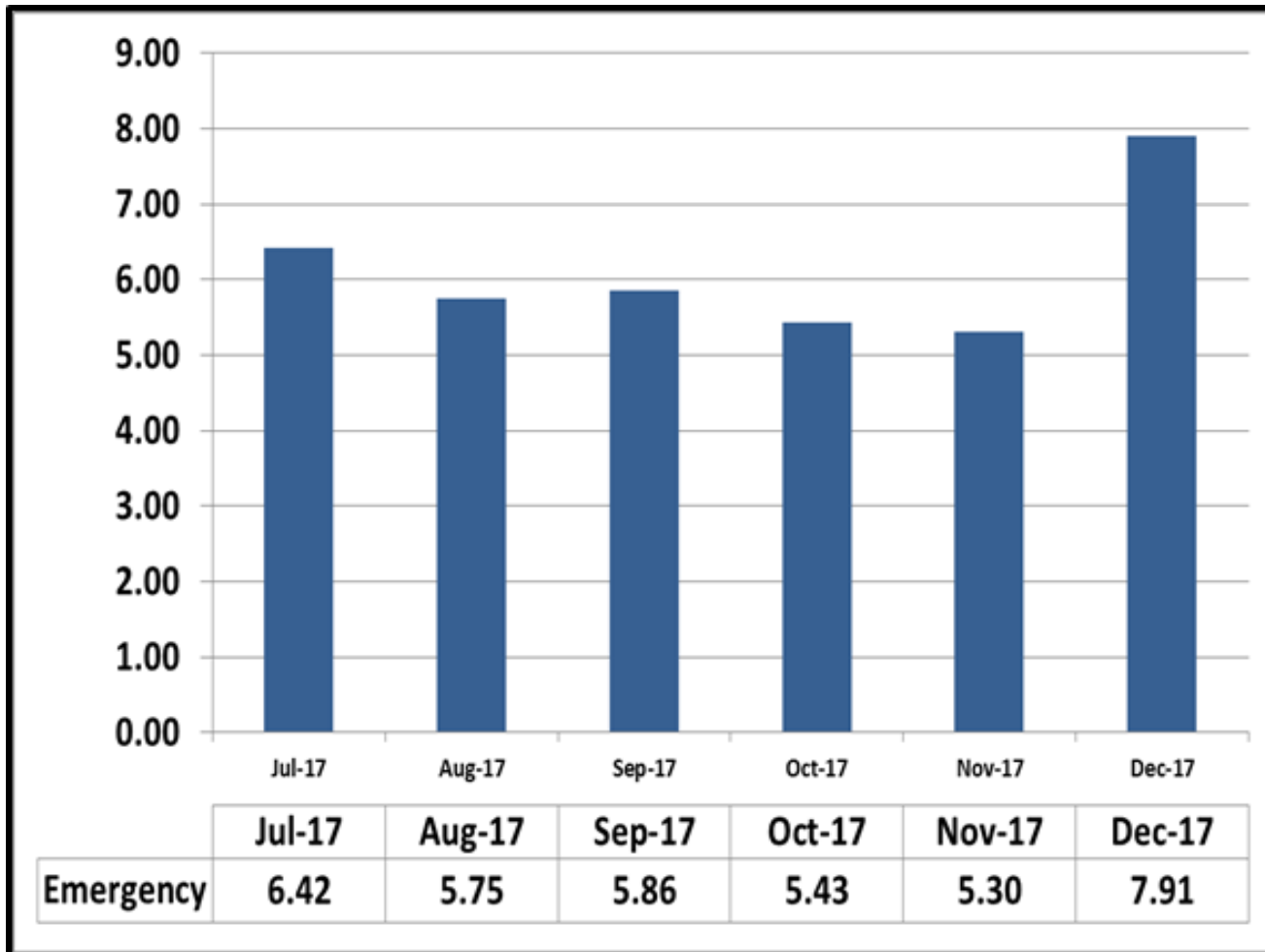
## System Wide Part 1 & Part 2 Crimes



Metro

# Key Performance Indicators

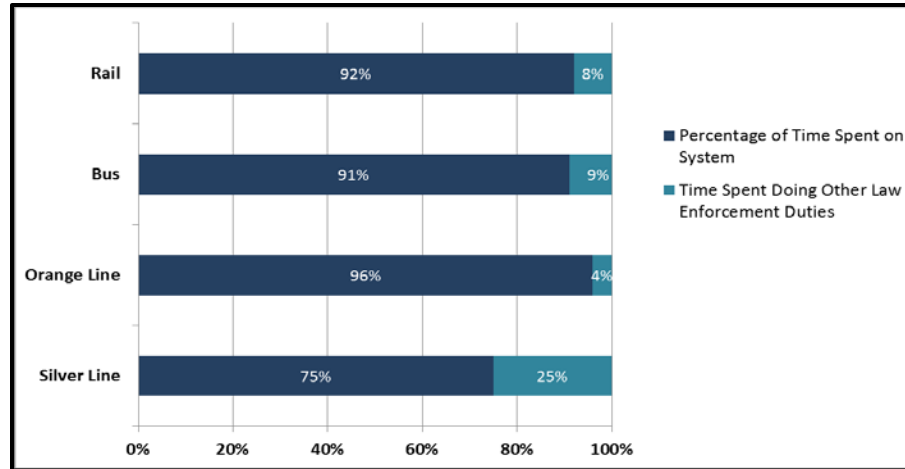
## Average Emergency Response Times



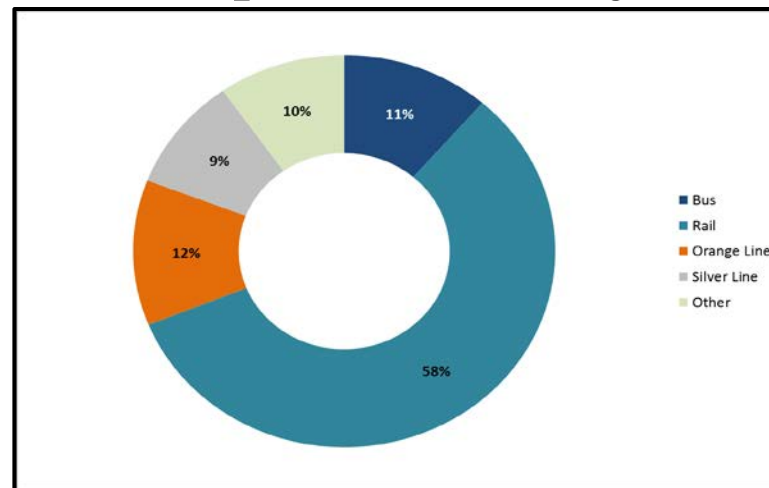
Metro

# Key Performance Indicators

## Percentage of Time Spent on the System

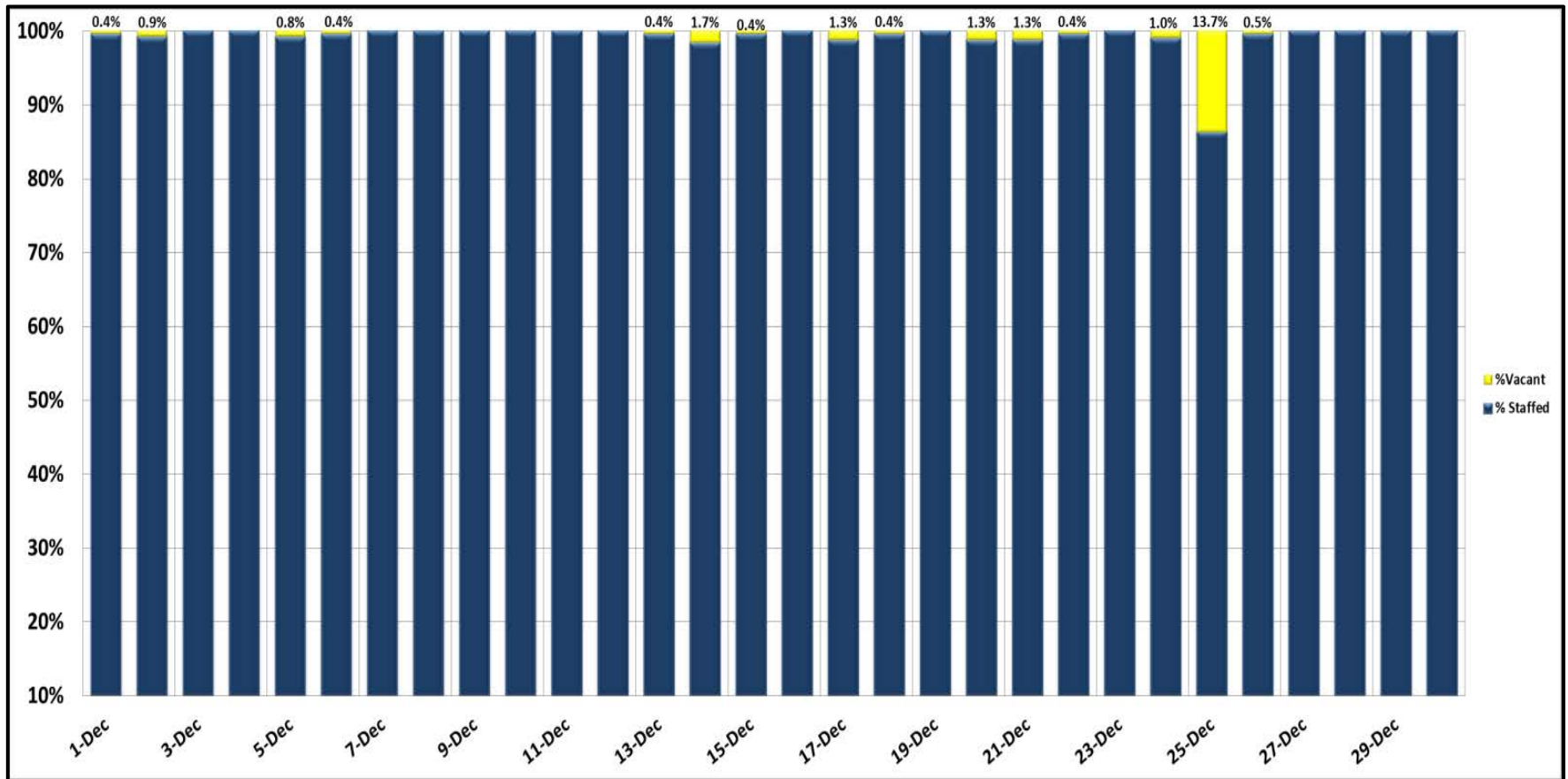


## Percentage of Time Spent on the System as a Whole



# Key Performance Indicators

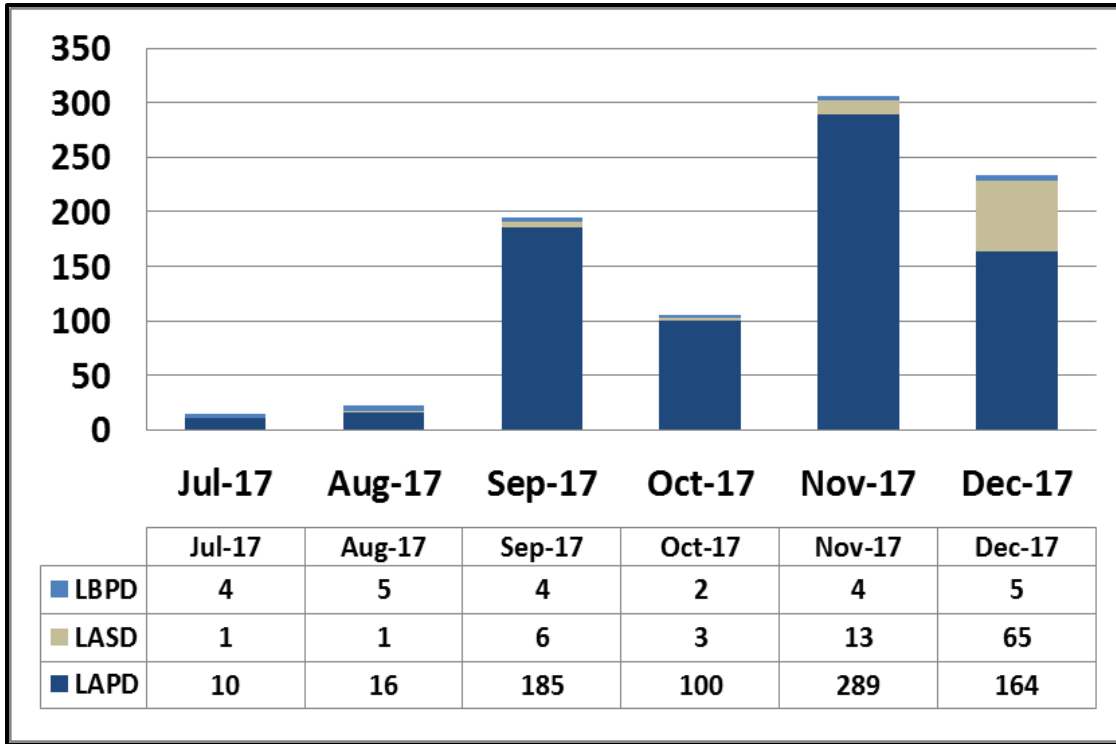
## Ratio of Staffing Levels vs Vacant Assignments



Metro

# Key Performance Indicators

## Grade Crossing Operations

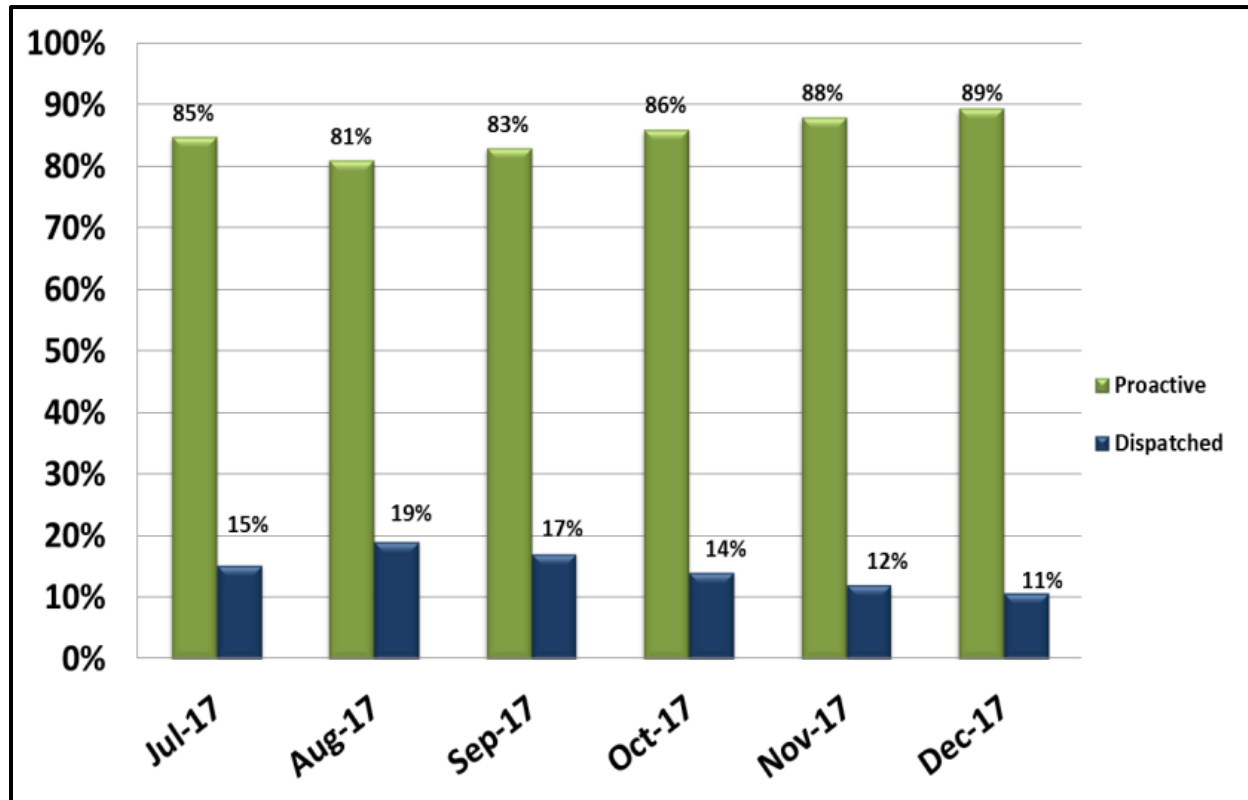


### Grade Crossing Operation Locations December:

1. Washington St (60)
2. Flower St (21)
3. 103<sup>rd</sup> St (3)
4. Wardlow St (3)
5. Long Beach Blvd (1)
6. Pacific Ave & 208<sup>th</sup> st (1)
7. Blue Line Stations (9)
8. Exposition Blvd (36)
9. Marmion Way (23)
10. Figueroa St (21)
11. Gold Line Stations (56)

# Key Performance Indicators

## Ratio of Proactive vs Dispatched Activity



Metro

# 2017/2016 Crime Comparison

Crime- System Wide	YR 2017	YR 2016	Variance	% Change
Part 1 Crimes System Wide	1,568	1,714	(146)	- 9%
Part 2 Crimes System Wide	1,134	1,663	(529)	- 32%
Total Crime System Wide	2,702	3,377	(675)	- 20%

System wide, Part 1 crimes **decreased by 9%** in 2017 compared to 2016.

System wide, Part 2 crimes **decreased by 32%** in 2017 compared to 2016.

Total crime **decreased by 20%** in 2017 compared to 2016.

Crime	YR 2017	YR 2016	Variance	% Change
Operator Assaults	94	120	(26)	- 22%

System wide, Operator Assaults **decreased by 22%** in 2017 compared to 2016.



# 2018 Priorities

- **Safeguarding Patrons & Employees**
- **Reducing Crime and Vulnerability to Terrorism**
- **Preventing Sexual Assault and Harassment**
- **Building Relationships & Trust**
- **Improving the Ridership Experience**
- **Partnering with Stakeholders to Address Homelessness**
- **Exploring New Technologies**
- **Exchanging 'Best Practices' with Industry**
- **Educating the Ridership on Metro's Code of Conduct**

# It's Off Limits Campaign

metro.net

## IT'S OFF LIMITS.

If you've experienced sexual harassment while riding Metro, we are here to listen. Call our 24/7 confidential hotline.

# 1.844.OFF.LIMITS

1.844.633.5464

 Metro

 PEACE OVER VIOLENCE



- **Contract Extension:** January 2018, Metro extended its partnership with Peace Over Violence for one year as to provide ongoing It's Off Limits hotline support to our passengers.
- **Incident Trends:** Metro works with contracted law enforcement to identify incident location trends to deploy officers to prevent incidences from occurring.



Metro