

Airport Metro Connector

96th Street Transit Station

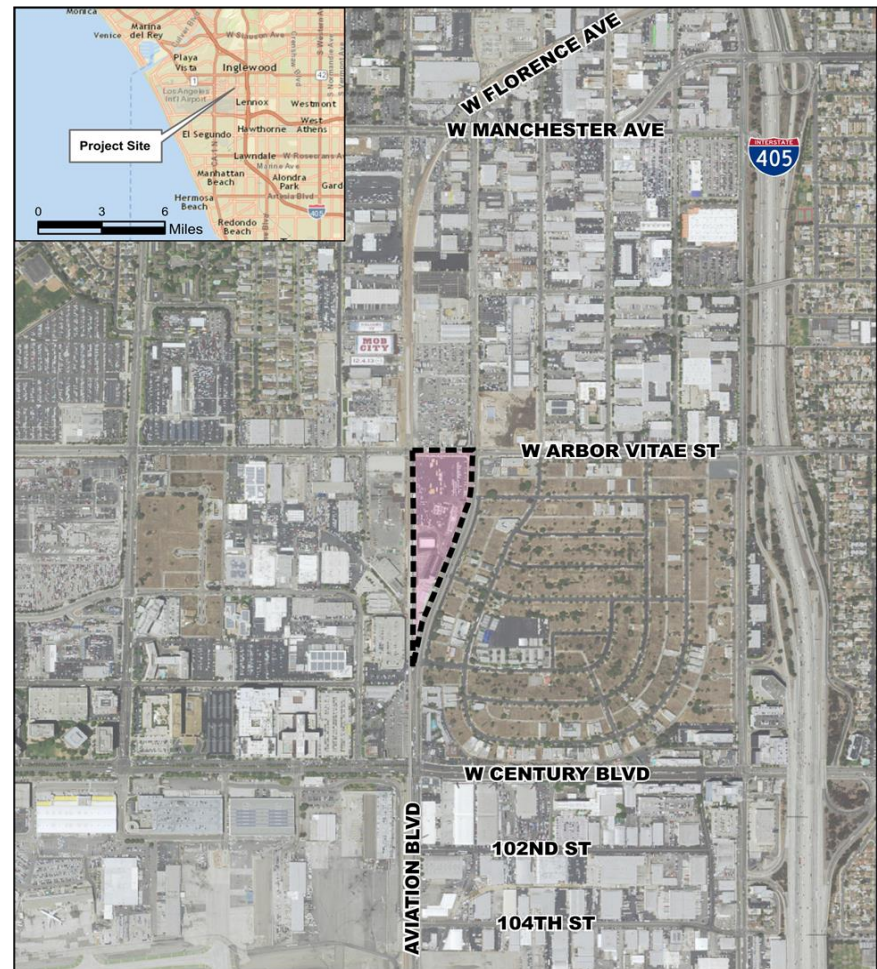
August 17, 2016 - Planning and Programming Committee

August 18, 2016 - Construction Committee



Draft Environmental Impact Report (EIR) Project Components

- > Three at-grade Light Rail Transit Platforms served by Crenshaw/LAX and Green Lines
- > Bus plaza
- > Bicycle hub
- > Pedestrian plaza(s)
- > Passenger pick-up/drop-off area
- > Transit center/Terminal building (“Metro Hub”)



LEGEND
Project Site

Approximate Scale
0 1,000 2,000 Feet

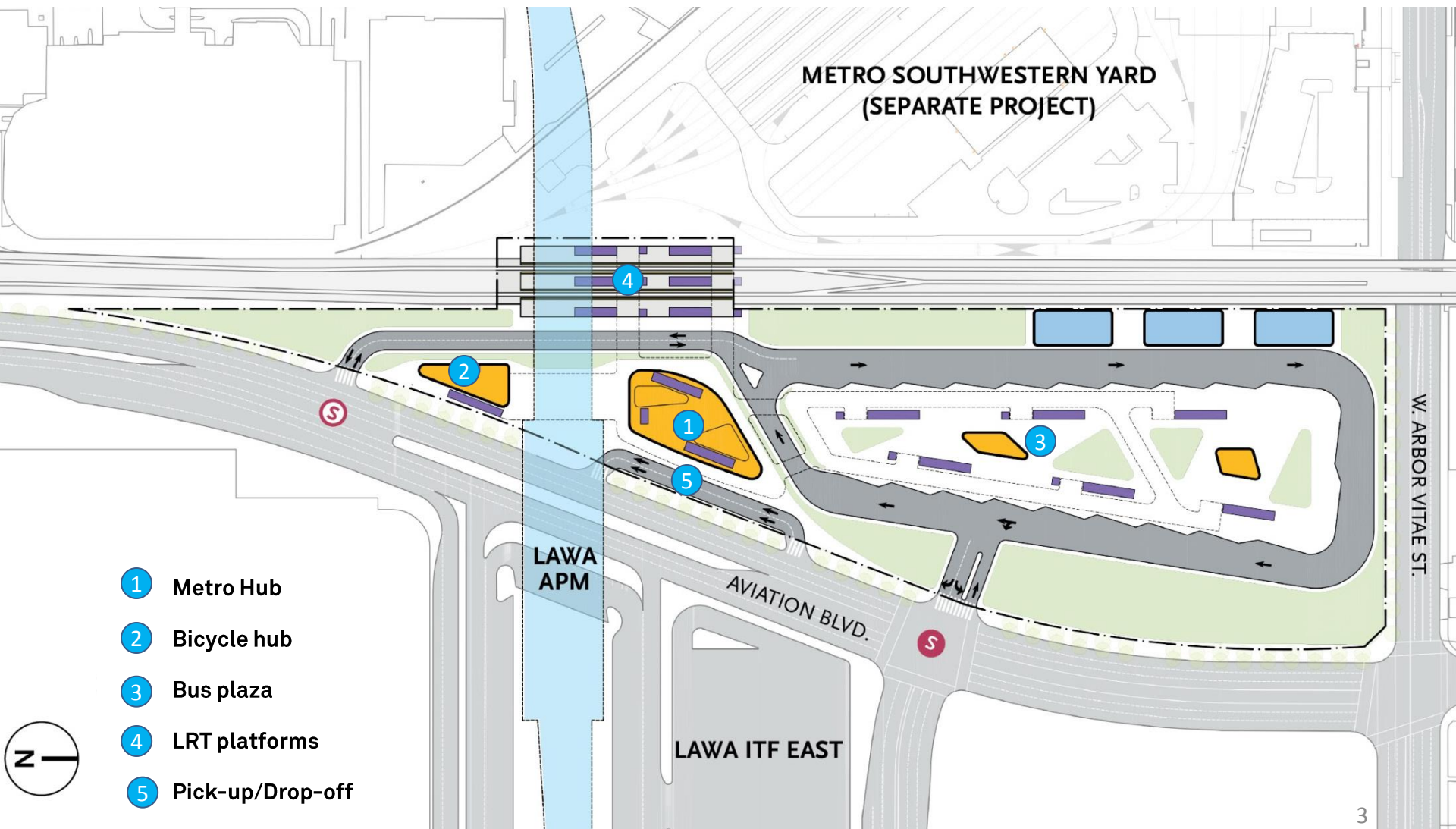
* APM is being cleared by LAWA



Metro®

Draft Environmental Impact Report (EIR)

Ground Level Conceptual Site Plan



Environmental Impact Report

> Draft EIR

- June 22nd – released for start of 45-day public review period
- July 13th – Public Hearing
 - 45 attendees
- August 6th – close of public review period

> Final EIR

- August 25th – Board authorization of contract modification to prepare Final EIR
- Fall 2016 – complete Final EIR and present to Board for certification

Draft Environmental Impact Report

Summary of Impact Analysis

Environmental Topic	Significance of Impact
Aesthetics Agricultural Resources Biological Resources Cultural Resources Geology and Soils Hydrology and Water Quality Mineral Resources Population and Housing Public Services Recreation Utilities and Service Systems	No Impact
Air Quality Greenhouse Gas Emissions Land Use and Planning Noise and Vibration Transportation and Traffic	Less-Than-Significant Impacts
Biological Resources Cultural Resources Geology and Soils Hydrology and Water Quality Public Services	Less-Than-Significant Impacts With Regulatory Requirements
Hazards and Hazardous Materials	Less-Than-Significant Impacts With Incorporation of Mitigation

DEIR Public Comments

- > 73 comments received via public comments at hearing, letters, Facebook, Twitter and emails

- > Comments generally relate to the following topics:
 - support for project
 - changes to bus facilities/services
 - impact to Metro Rail service and stations
 - Arbor Vitae grade crossing
 - parking in neighboring communities
 - Intersection level traffic analysis
 - Air quality
 - funding of the project
 - bicycle access along Aviation Boulevard
 - size and number of escalators and elevators
 - Cumulative project impacts



Metro

Next Steps

- > **Summer/Fall 2016**
 - Schematic design
 - Initiate federal environmental clearance
 - Complete EIR

- > **Continue coordination with:**
 - LAWA
 - Crenshaw/LAX project team
 - Southwestern Maintenance Yard