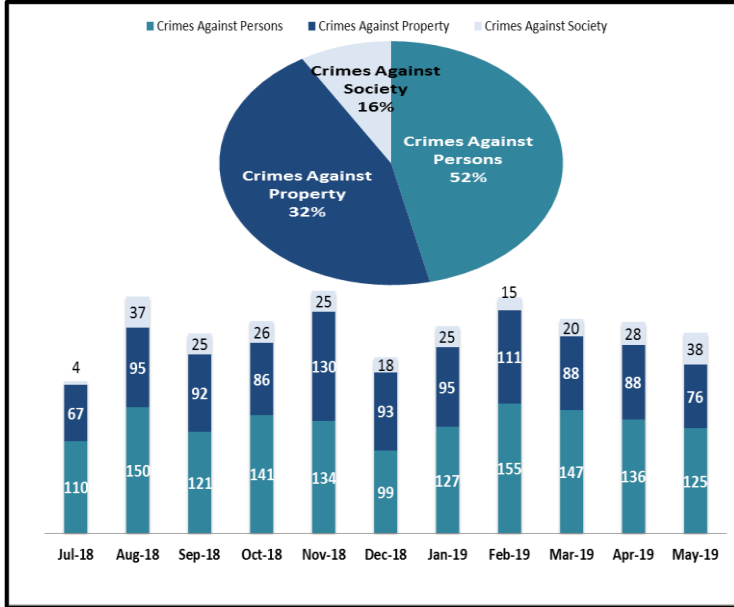


SYSTEM-WIDE LAW ENFORCEMENT OVERVIEW

MAY 2019

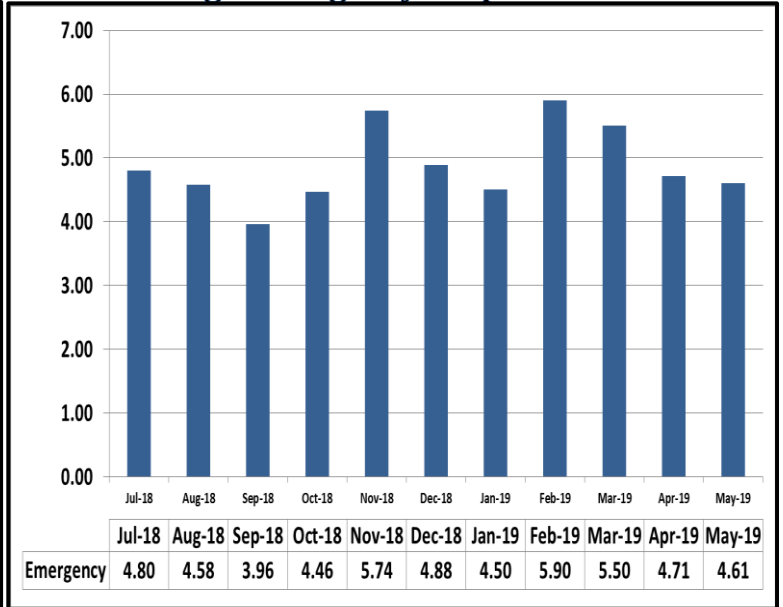
Attachment A

Crimes Against Persons, Property, and Society



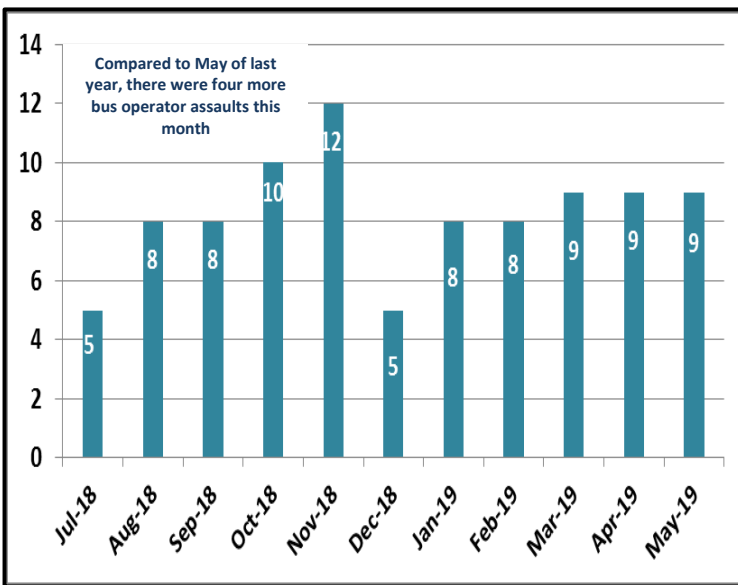
When compared to the same period last year, Crimes Against Persons increased by 9 crimes, Crimes Against Property decreased by 16 crimes, and Crimes Against Society decreased by 10 crimes.

Average Emergency Response Times

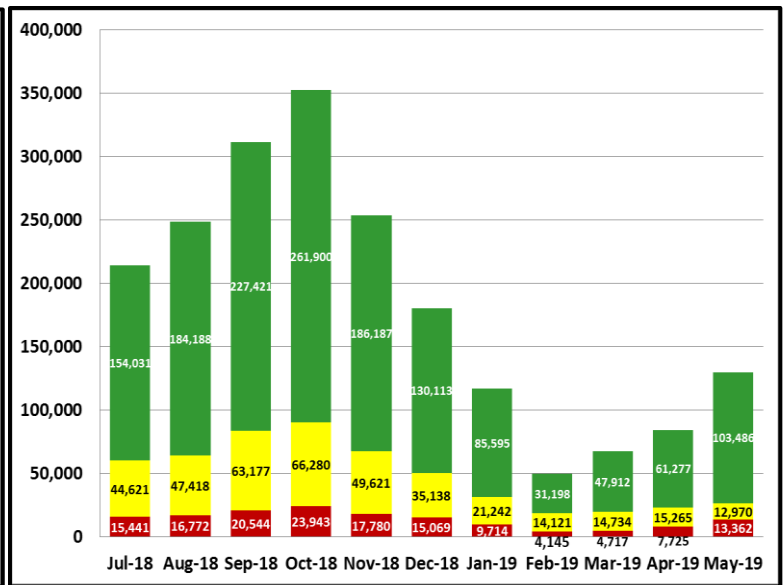


Average emergency response time was 4.61 mins.

Bus Operator Assaults



Fare Compliance



Green Checks- Occurs when a patron has valid fare
Yellow Checks- Occurs when a patron has valid fare, but did not tap at transfer station
Red Checks- Occurs when a patron has invalid fare