

Moving Beyond Sustainability (MBS)

Five-Year Update

About *Moving Beyond Sustainability* (MBS)



Metro's Board of Directors adopted *Moving Beyond Sustainability*, our 10-year sustainability strategic plan, in September 2020.

This plan committed Metro to ambitious sustainability goals, including 20 targets across seven (7) categories of performance:

- Water Quality and Conservation
- Solid Waste
- Materials, Construction and Operations
- Energy Resource Management
- Emissions and Pollution Control
- Resilience and Climate Adaptation
- Economic and Workforce Development



MBS Five-Year Update



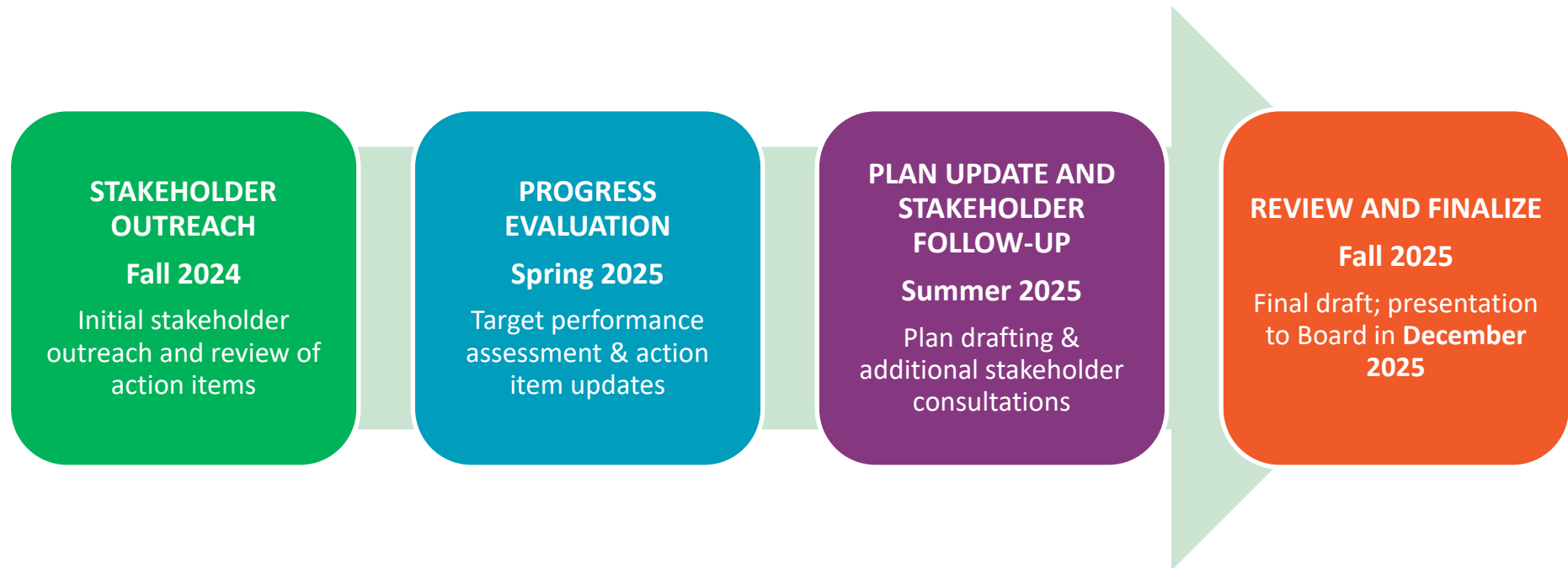
At the halfway mark, this *MBS Five-Year Update* reflects Metro's progress to date and an updated roadmap for executing our sustainability vision through 2030.

- »» *Summarizes performance on all MBS targets*
- »» *Identifies key achievements, implementation challenges, and cost considerations*
- »» *Shortlist of priority next steps to drive achievement of targets through 2030*
- »» *Updated blueprint for advancing sustainability at Metro that accounts for fiscal cliff, agency-wide priorities and regulatory requirements*

MBS Five-Year Update



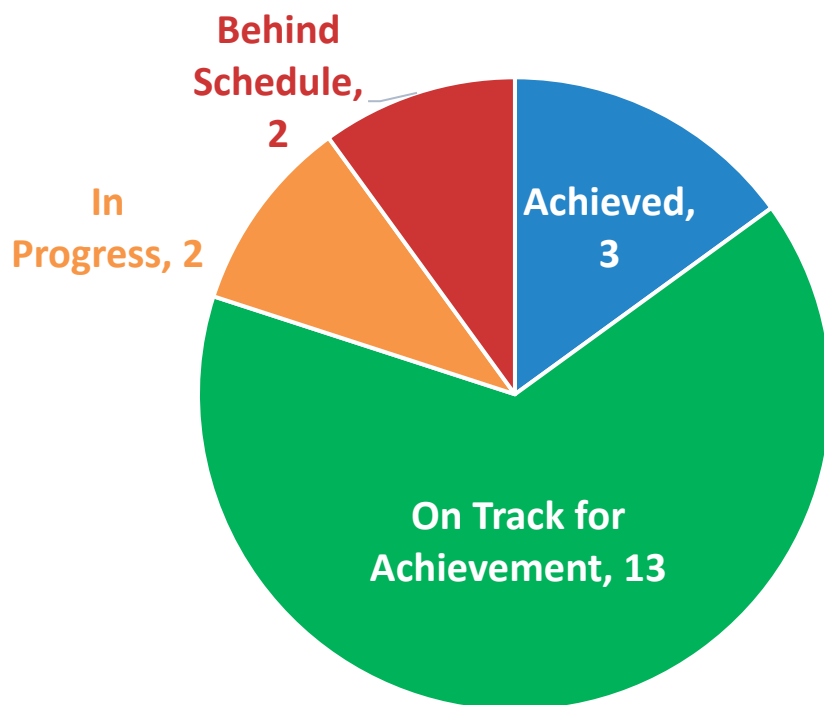
The Office of Sustainability prepared this *Five-Year Update* over the course of the last 16 months through four phases of work.



Performance to Date



*As of 2024, Metro has achieved or is on track to achieve **80%** of the MBS targets.*



Targets Behind Schedule:

- Operational Solid Waste Generation
- On-Site Renewable Energy Capacity

Key Trends

- Partnerships with key departments are paying off and driving achievement of most targets.
- *Initiatives to reduce air pollution and GHG emissions are highly effective.*
- Landfill diversion efforts on construction sites are showing impressive results.
- Energy resource management:
 - *Ahead of schedule* in energy demand and efficiency goals;
 - *Challenge in energy generation for both supply and resiliency*

2026-2030 Strategic Priorities



In this *Five-Year Update*, we establish a renewed set of strategic priorities for our sustainability program through 2030 and beyond.

2026-2030 MBS Strategic Priorities

Advancing equity and climate justice

Centering fiscal responsibility and sustainability

Promoting customer experience, safety and security

Ensuring system reliability and resilience

Establishing and strengthening community partnerships

Developing our regional youth and green workforce of the future

Ingratiating sustainability and environmental compliance into Metro culture

Moving Beyond Sustainability (MBS)

Five-Year Update