



Project Labor Agreement (PLA)/  
Construction Careers Policy (CCP) Report  
Construction Committee Item # \_\_\_\_  
September 20, 2018

# PLA/CCP Program Achievements

- Attainment
  - 59.85% Economically Disadvantaged
  - 21.29% Apprentice
  - 11.19% Disadvantaged
- >\$170 Million paid to Targeted Workers \*
  - \$32 Million paid to Disadvantaged Workers \*
  - \$45 Million paid to Apprentice Workers\*\*
- Exceeded Targeted/Apprentice/Disadvantaged Worker goals
- No work stoppages or lockouts

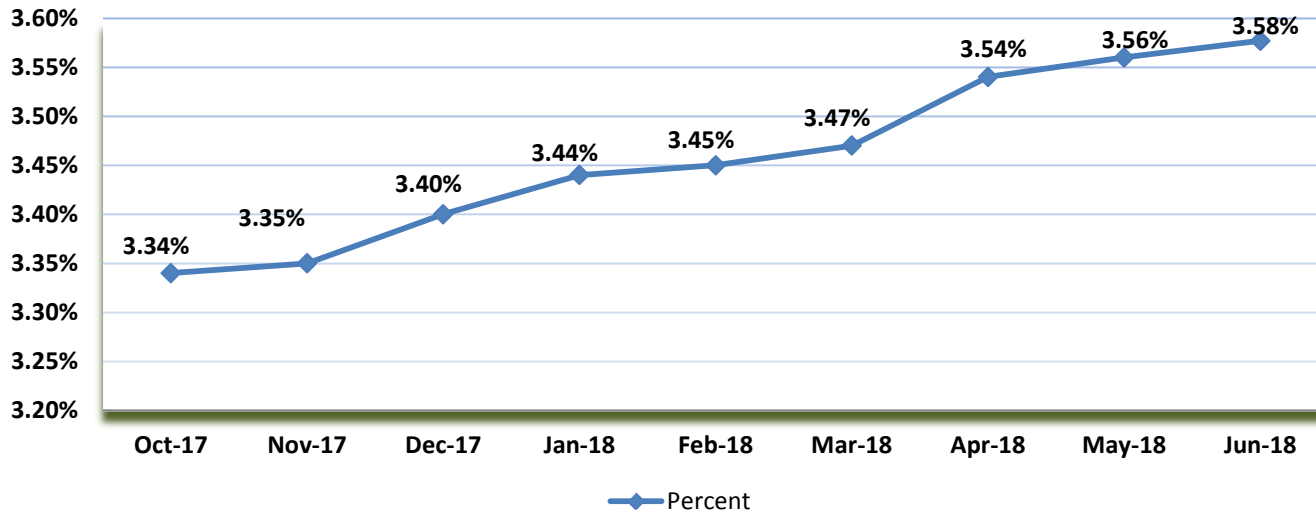


**Metro**

(\*Based on the lowest laborers rate as of June 2017)  
(\*\*Based on the lowest apprentice rate as of January 2017)  
(Workers may fall into multiple categories)

# Female Participation Attainment

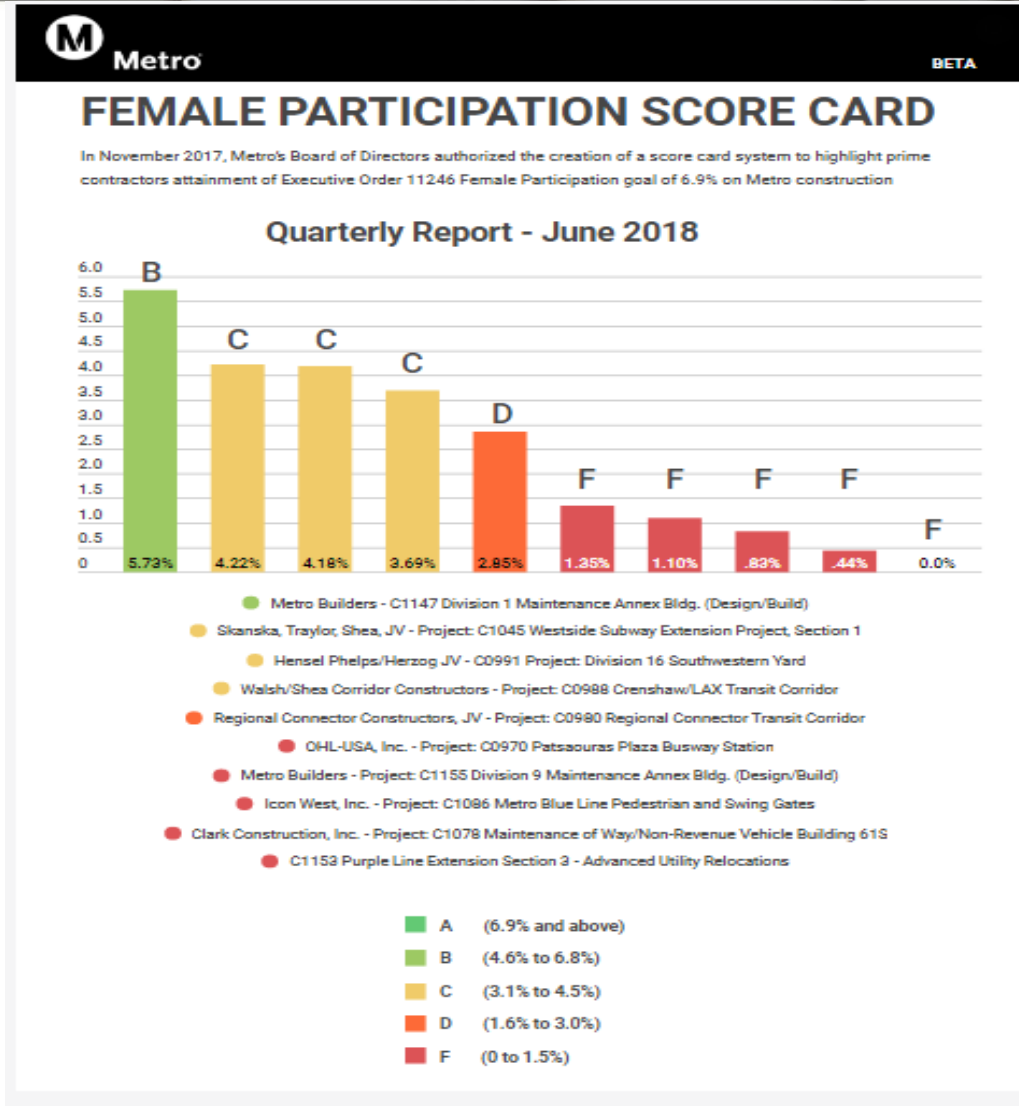
## Female Participation Attainment



- Metro's female participation attainment is trending upward
- 98 female workers were hired on all active construction projects within the last nine months

# Female Participation Score Card

- Overall female participation attainment is 3.58%
- Highest rating as of Q4 reporting is B grade



## Action Plan Highlights

- Awarded professional services contract for Regional Construction Workforce Disparity Study
- Initiated engagement for the assessment of Job Coordinator's outreach and recruitment practices; and processes
- Ongoing focus on worker retention and transition through coordination with Job Coordinators and Contractors

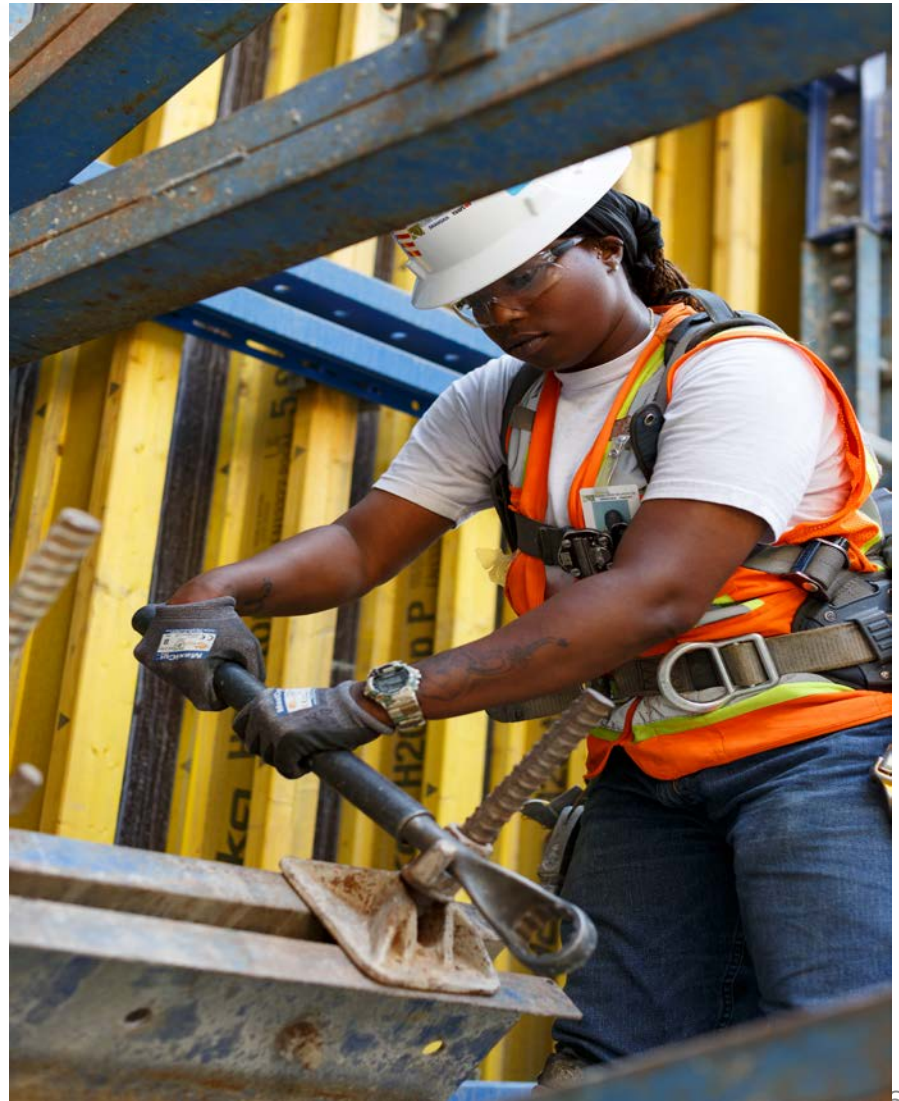


**Metro**



## Outreach and Engagement Activities

- Participated in HireLAX Apprenticeship Readiness Program
- Represented Metro at First Place for Youth's Career & Education Resource Fair





Thank you



Metro®