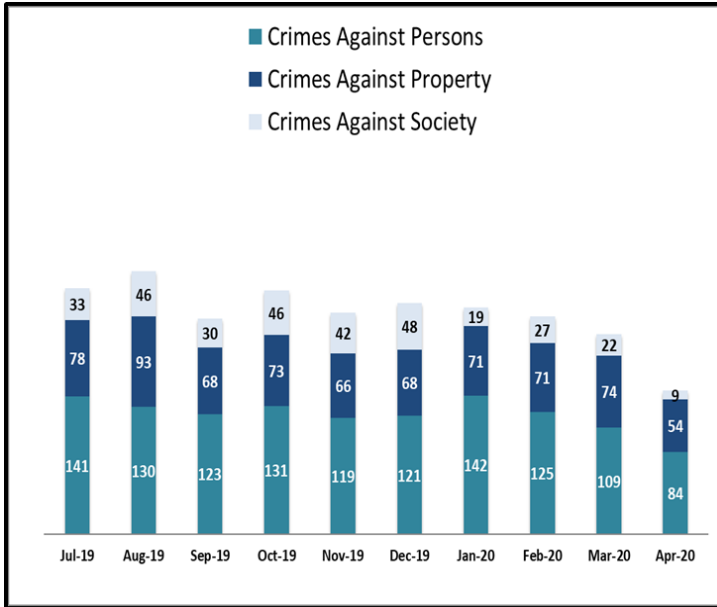


KEY PERFORMANCE INDICATORS

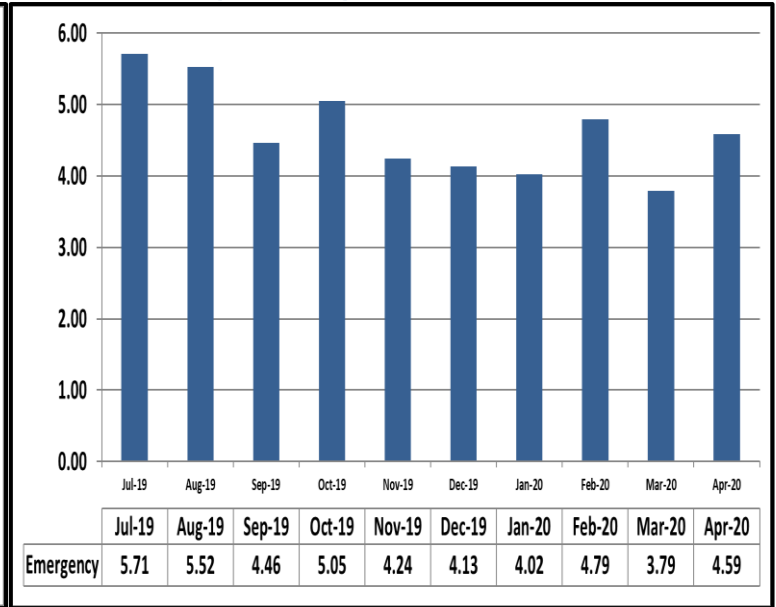
APRIL 2020

Attachment C

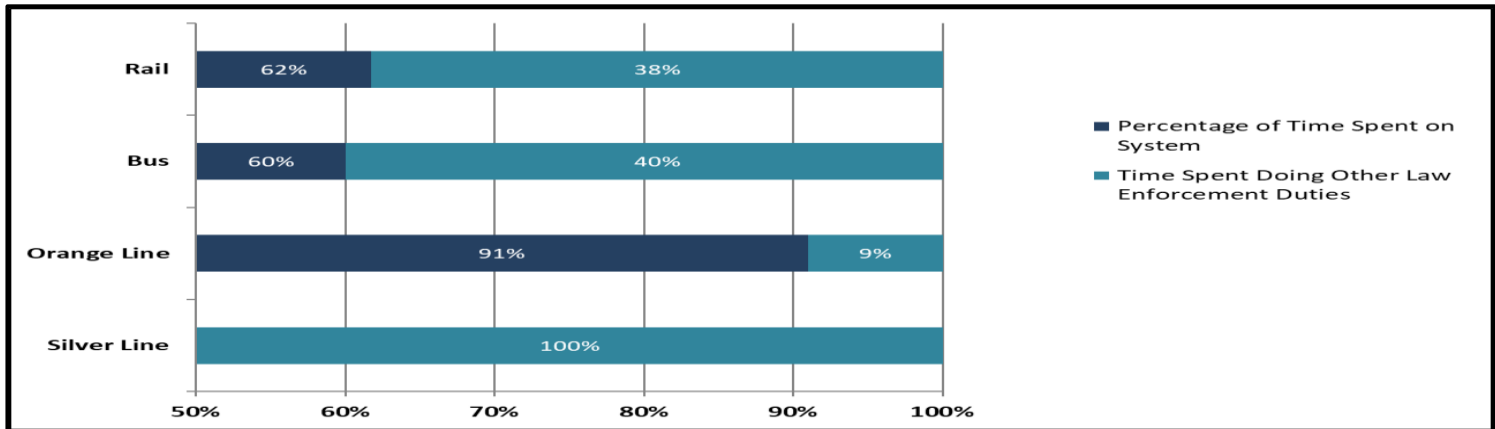
Crimes Against Persons, Property, and Society



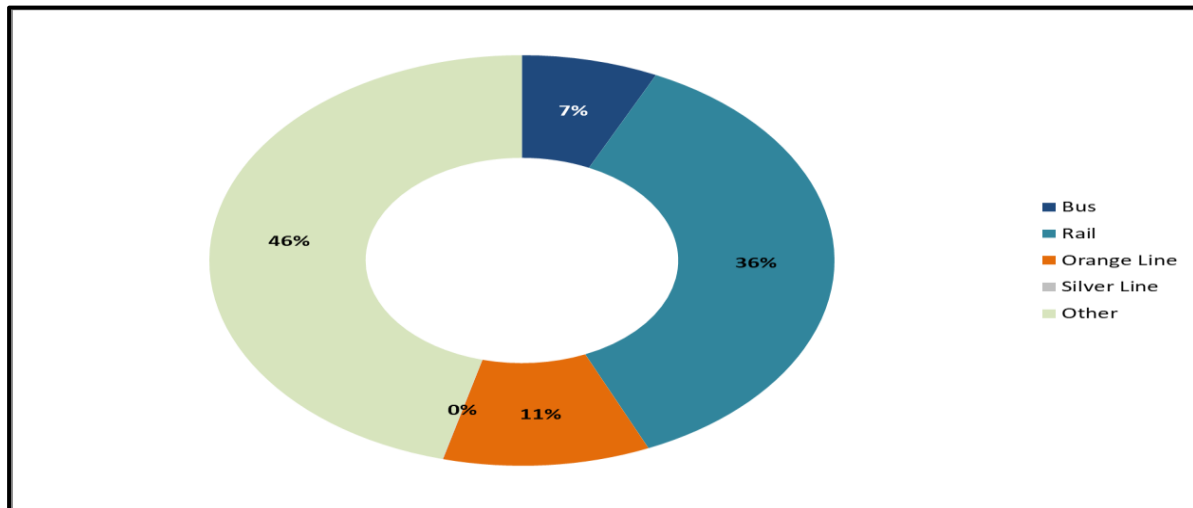
Average Emergency Response Times



Percentage of Time Spent on the System



Percentage of Time Spent on the System as a Whole

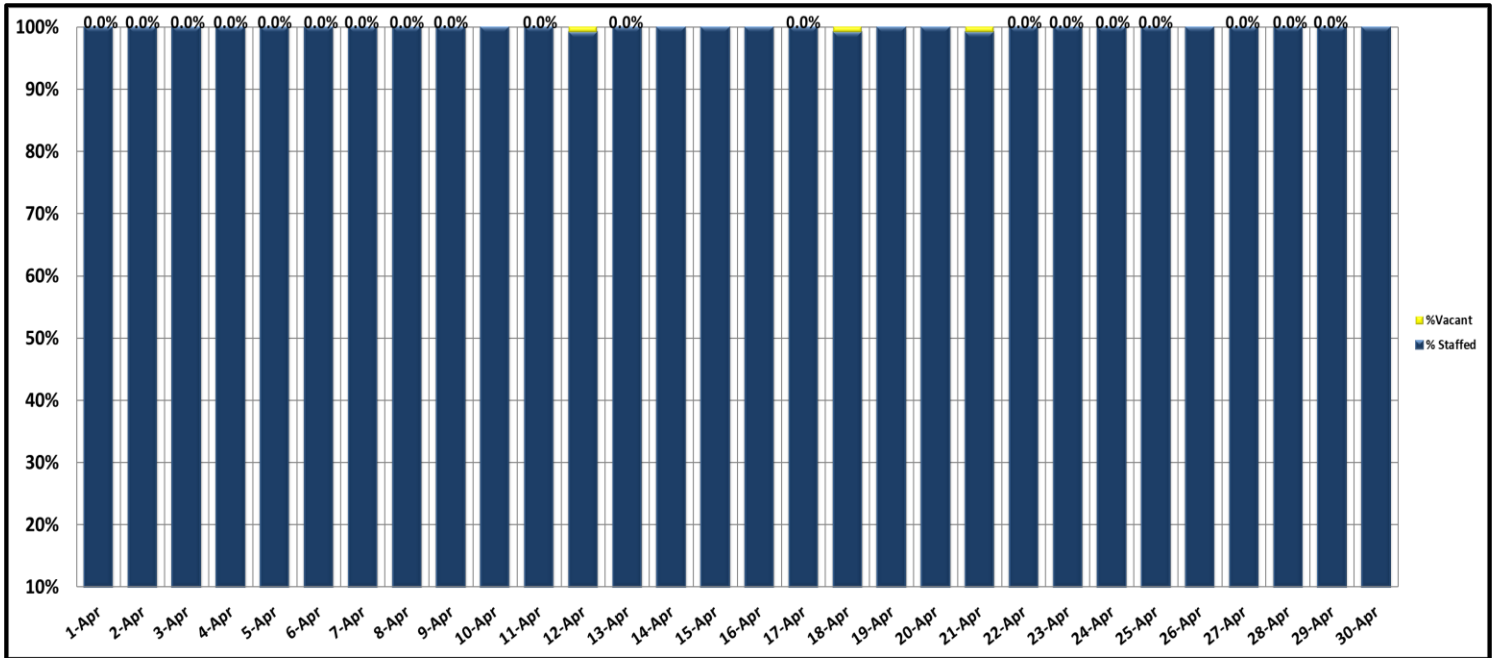


KEY PERFORMANCE INDICATORS

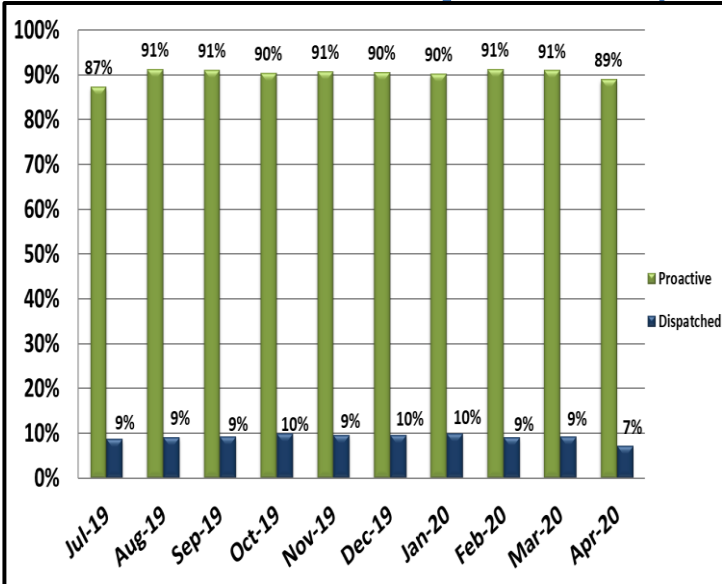
APRIL 2020

Attachment C

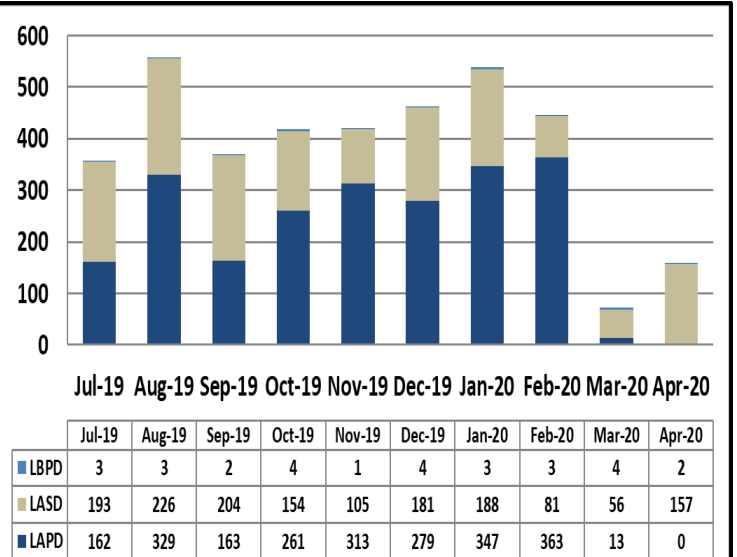
Ratio of Staffing Levels vs Vacant Assignments



Ratio of Proactive vs Dispatched Activity



Grade Crossing Operations



Grade Crossing Operation Locations April:

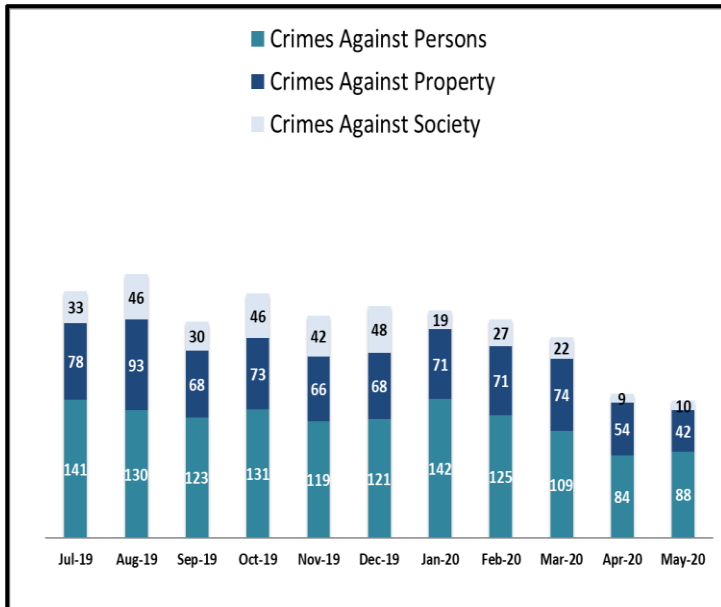
1. Blue Line Stations (89)
2. Expo Line Stations (8)
3. Gold Line Stations (62)

KEY PERFORMANCE INDICATORS

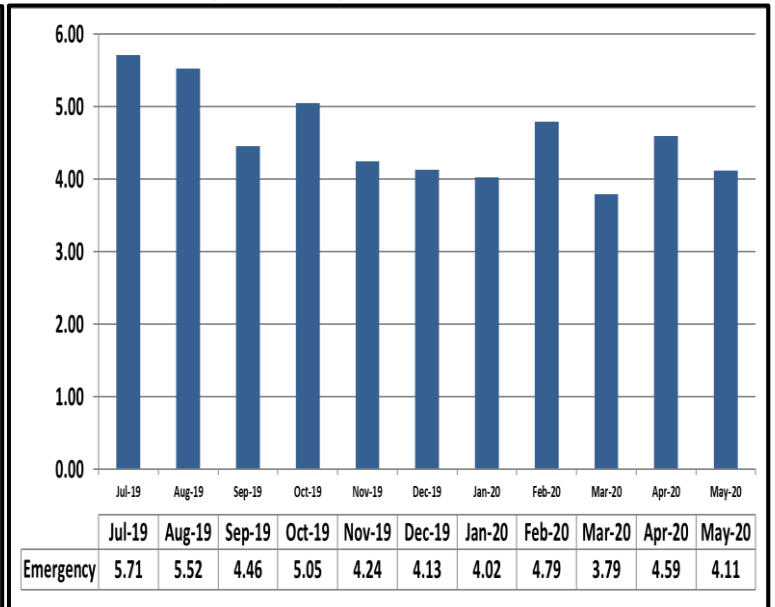
MAY 2020

Attachment C

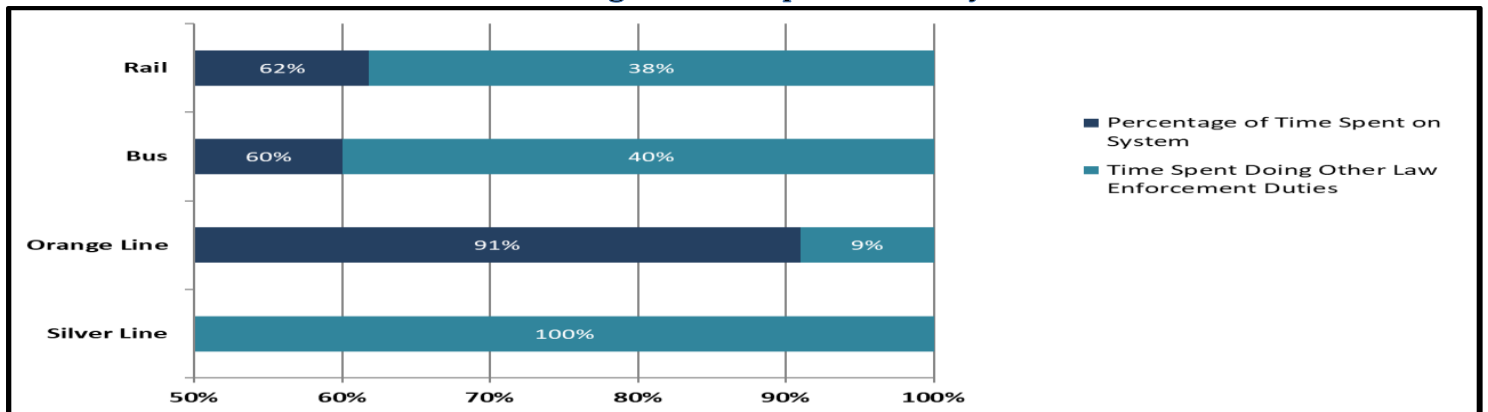
Crimes Against Persons, Property, and Society



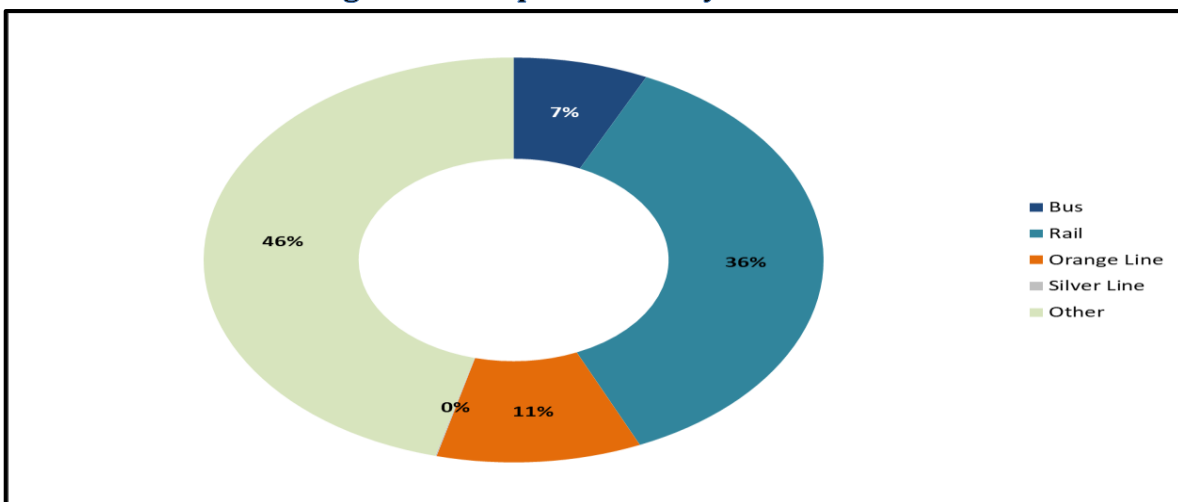
Average Emergency Response Times



Percentage of Time Spent on the System



Percentage of Time Spent on the System as a Whole

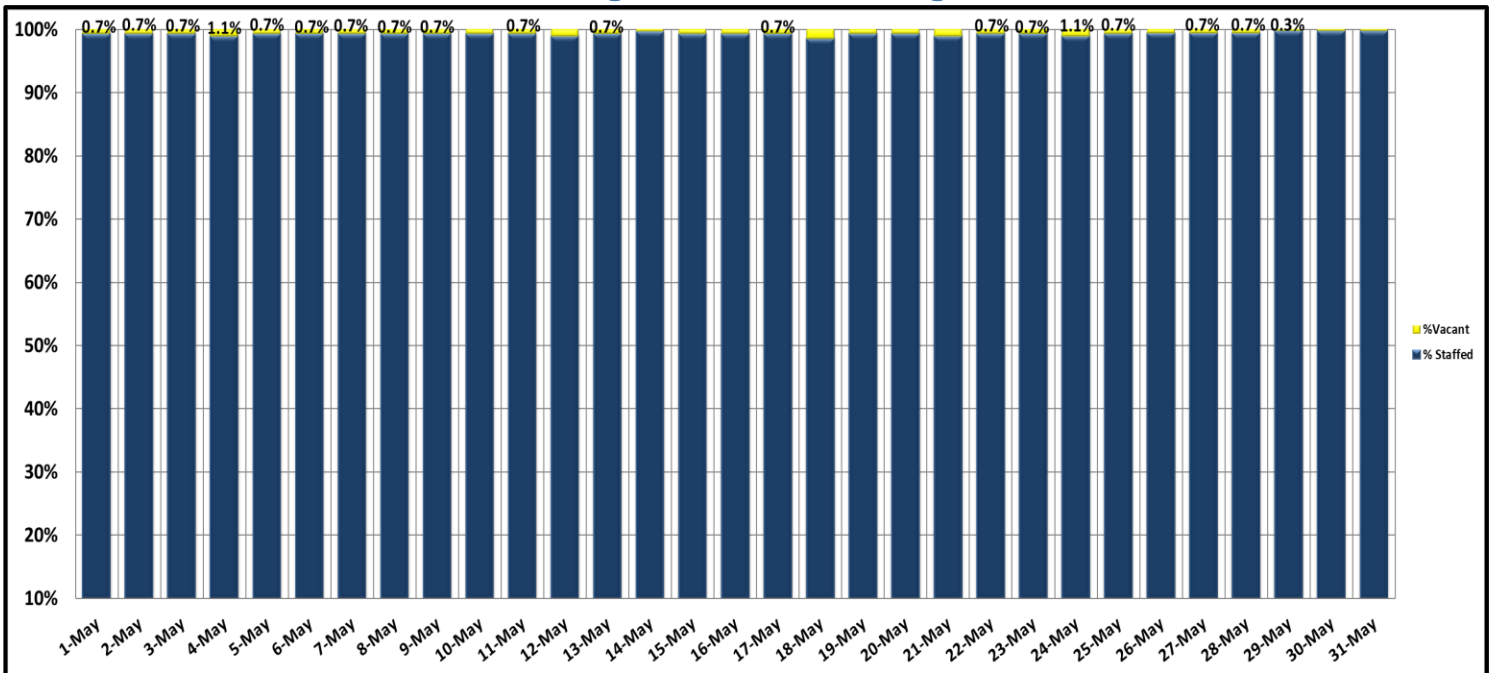


KEY PERFORMANCE INDICATORS

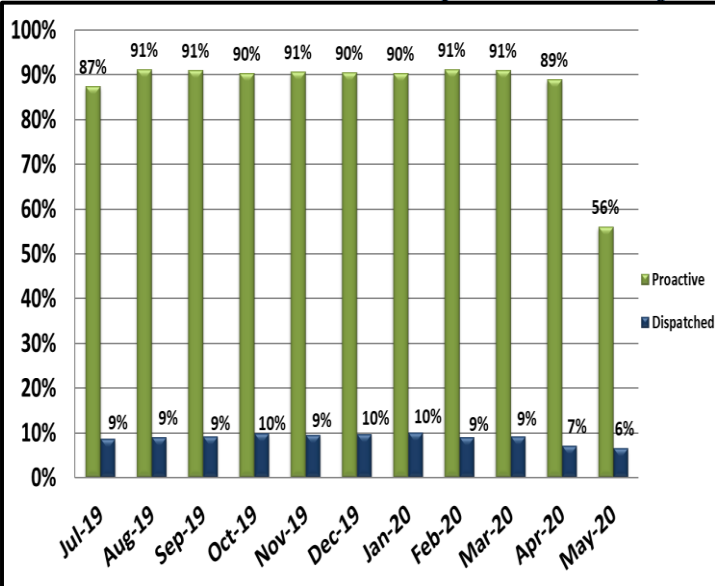
MAY 2020

Attachment C

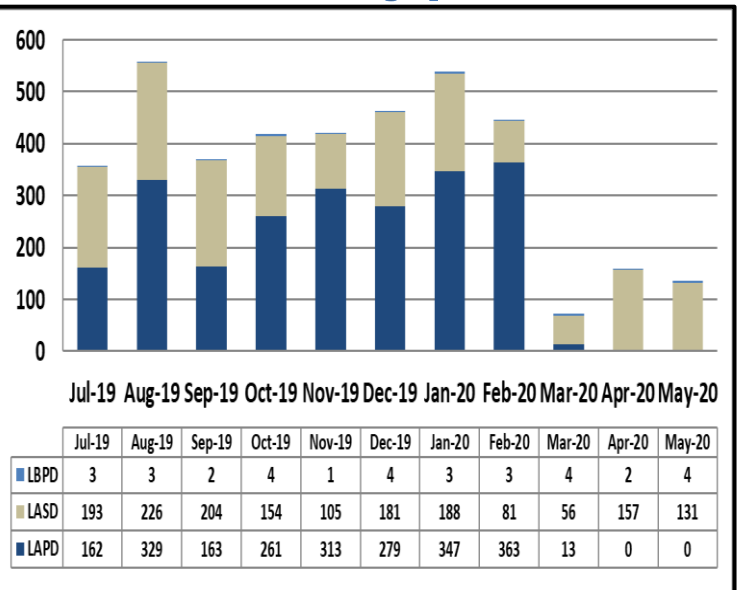
Ratio of Staffing Levels vs Vacant Assignments



Ratio of Proactive vs Dispatched Activity



Grade Crossing Operations



Grade Crossing Operation Locations May:

1. Blue Line Stations (55)
2. Expo Line Stations (5)
3. Gold Line Stations (75)