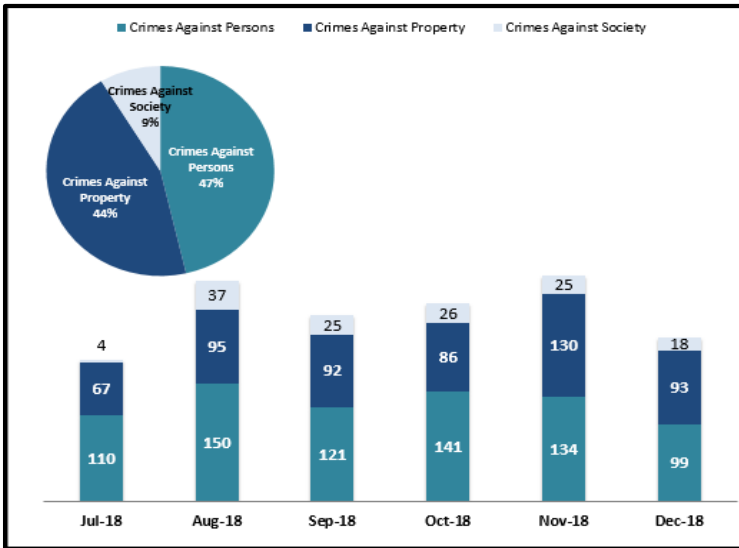


KEY PERFORMANCE INDICATORS

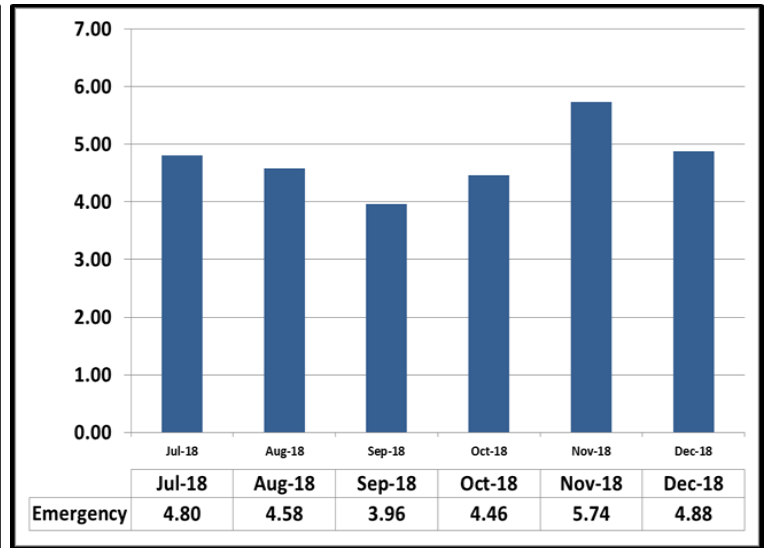
DECEMBER 2018

Attachment C

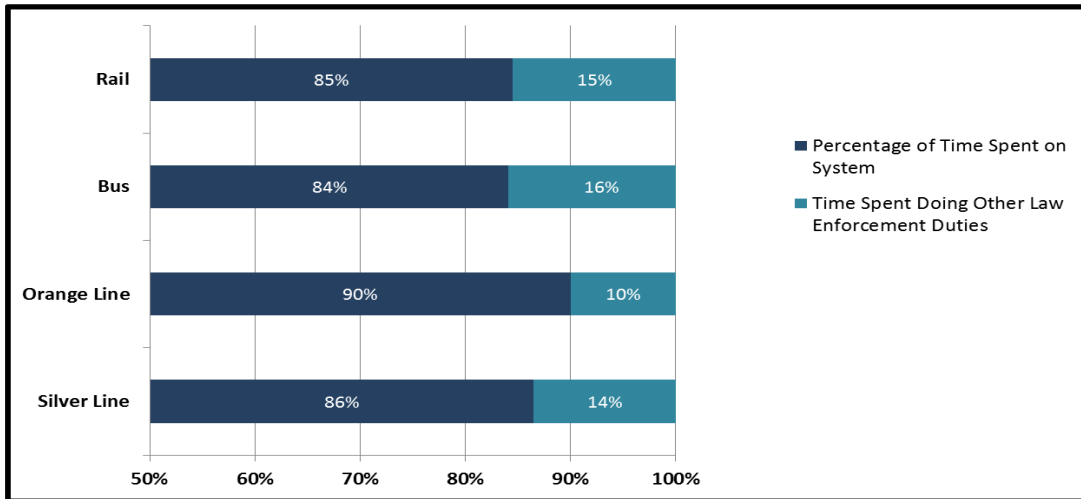
Crimes Against Persons, Property, and Society



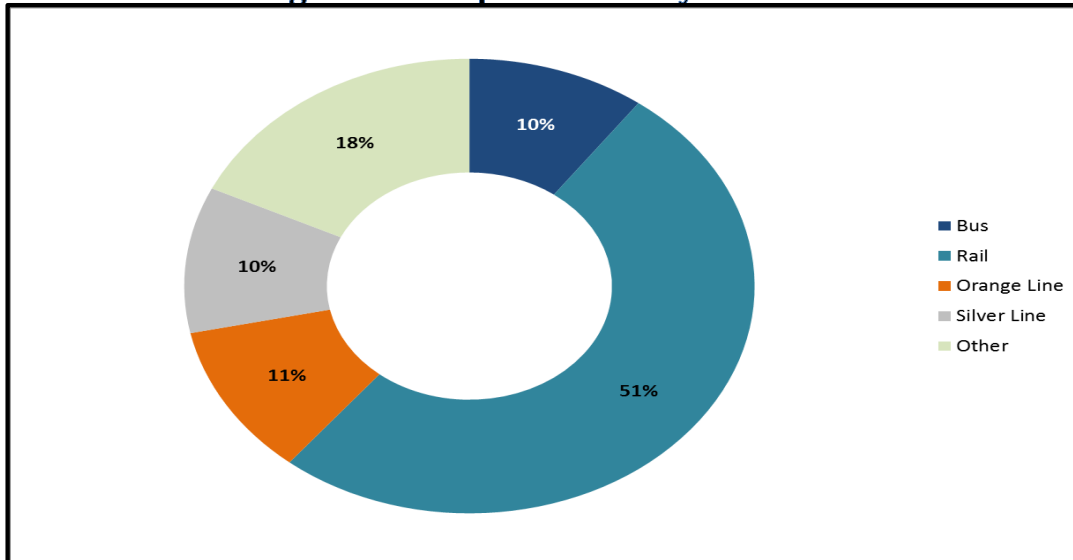
Average Emergency Response Times



Percentage of Time Spent on the System



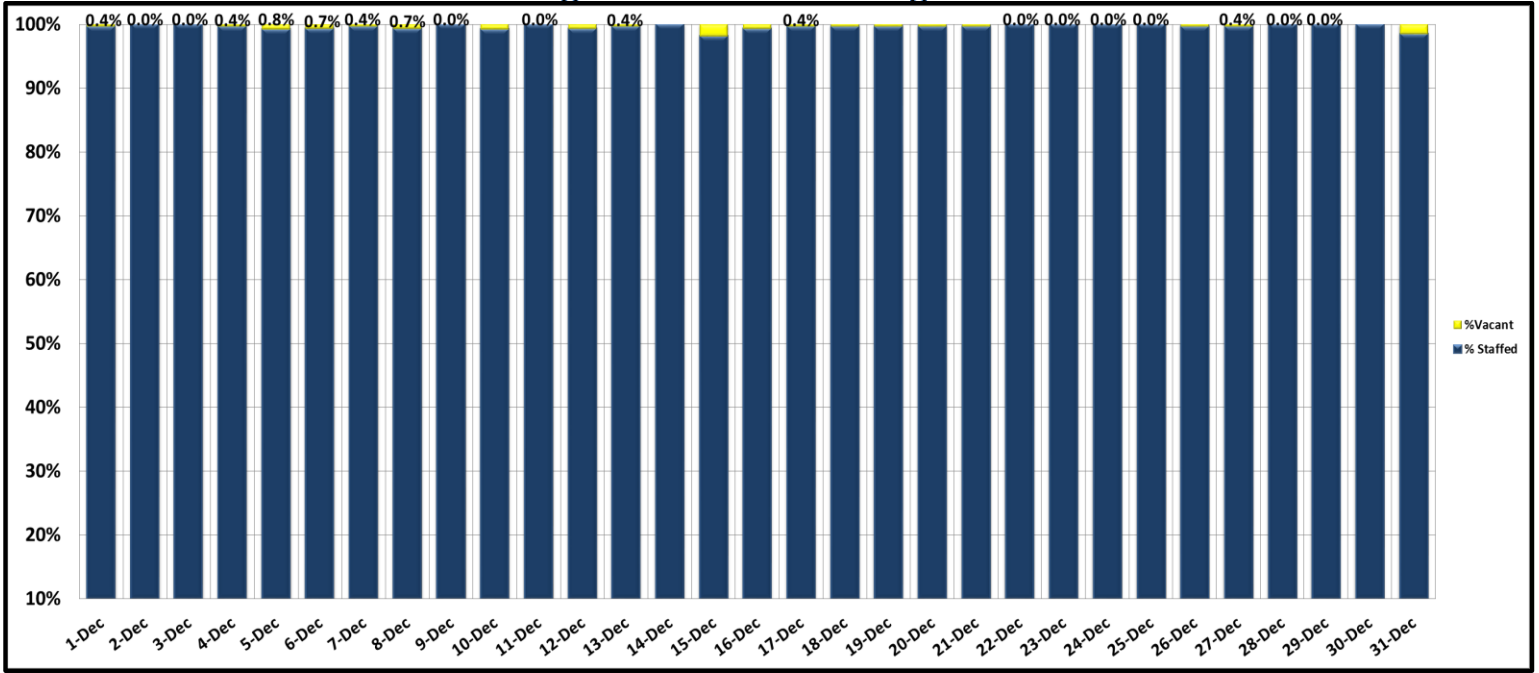
Percentage of Time Spent on the System as a Whole



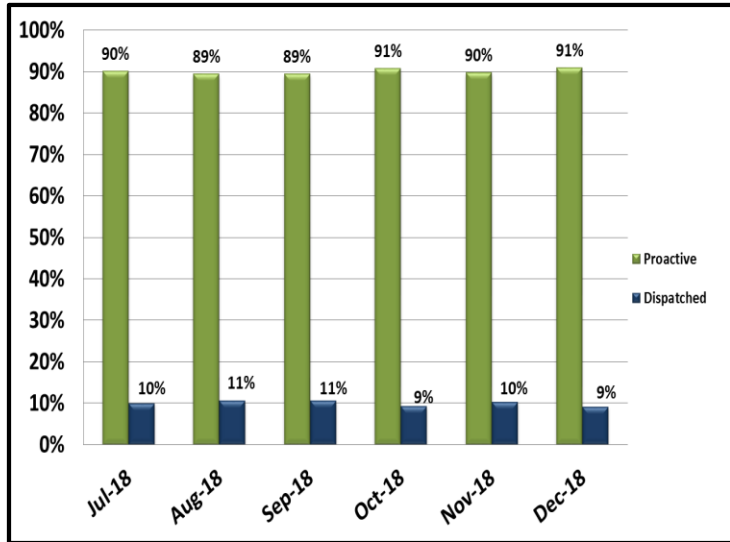
KEY PERFORMANCE INDICATORS

DECEMBER 2018

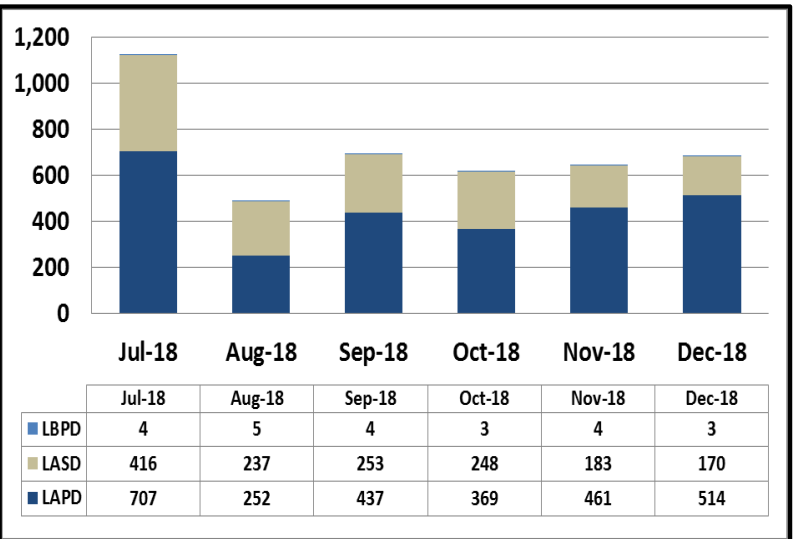
Ratio of Staffing Levels vs Vacant Assignments



Ratio of Proactive vs Dispatched Activity



Grade Crossing Operations



Grade Crossing Operation Locations December:

1. Blue Line Stations (145)
2. Expo Line Stations (335)
3. Gold Line Stations (207)