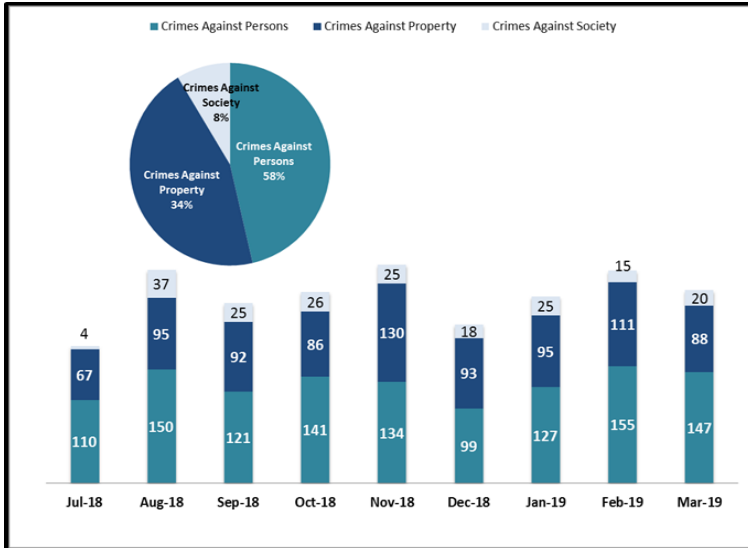


# KEY PERFORMANCE INDICATORS

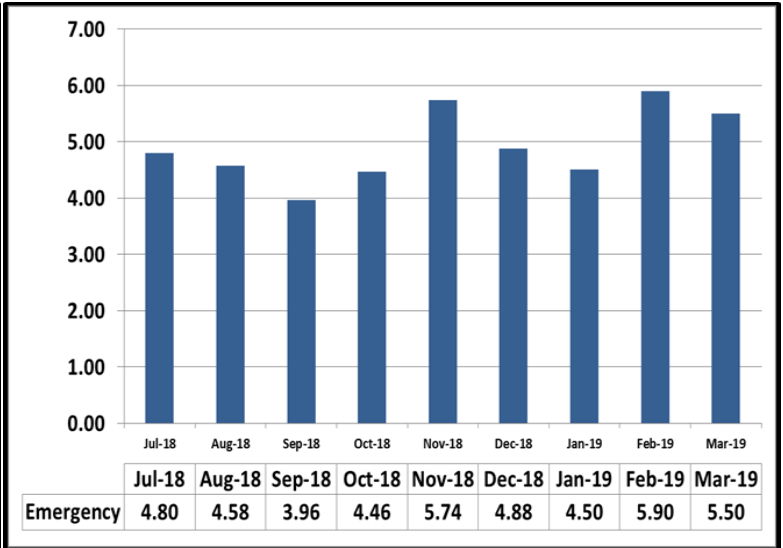
MARCH 2019

Attachment C

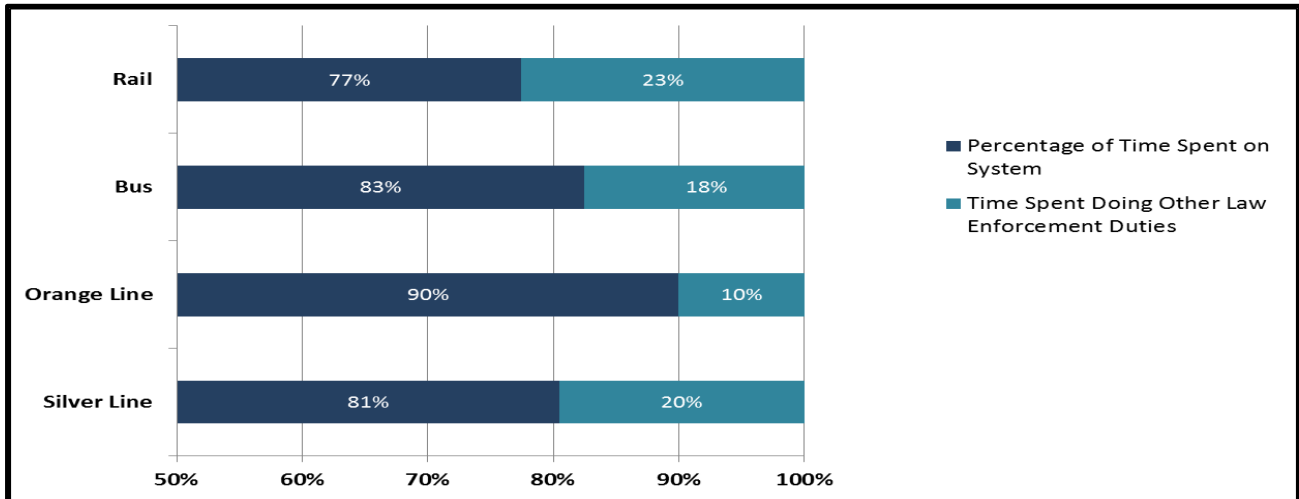
## Crimes Against Persons, Property, and Society



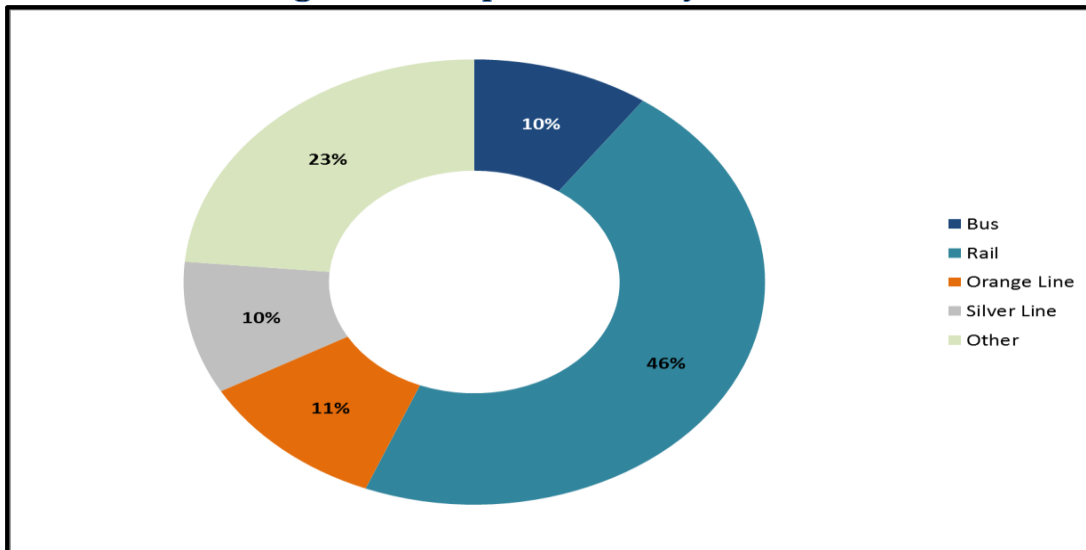
## Average Emergency Response Times



## Percentage of Time Spent on the System



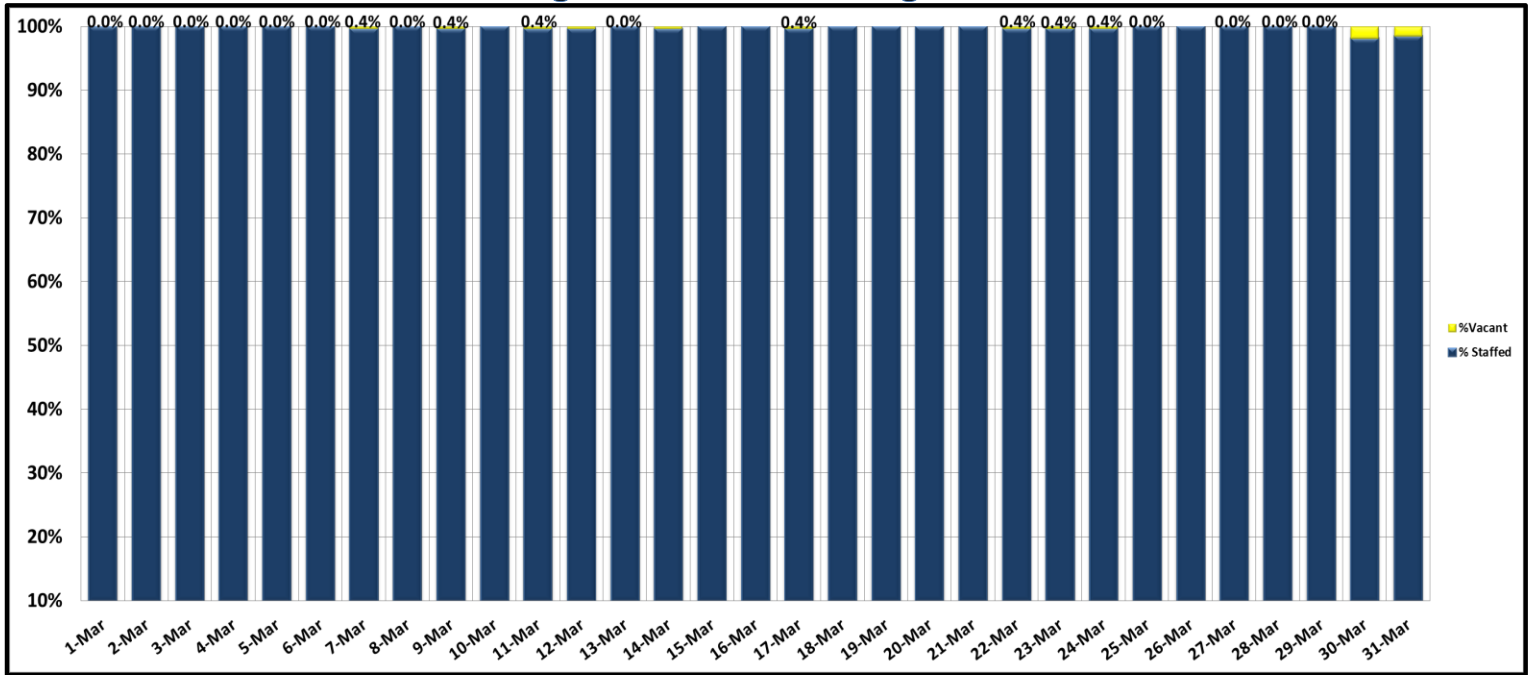
## Percentage of Time Spent on the System as a Whole



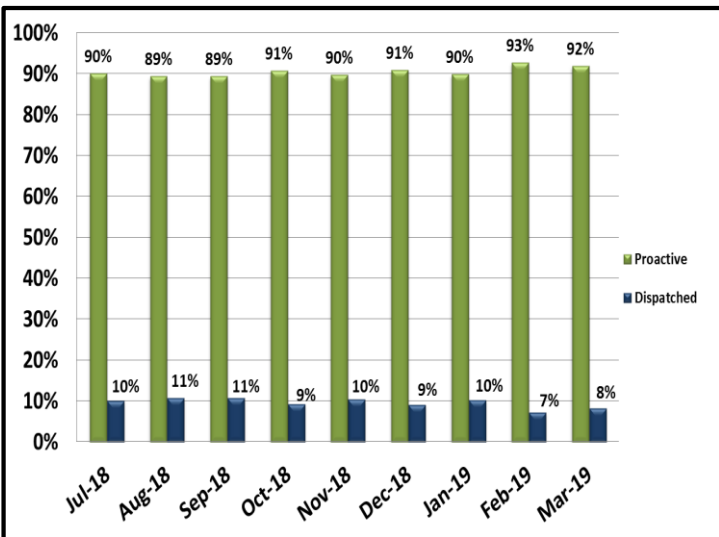
# KEY PERFORMANCE INDICATORS

MARCH 2019

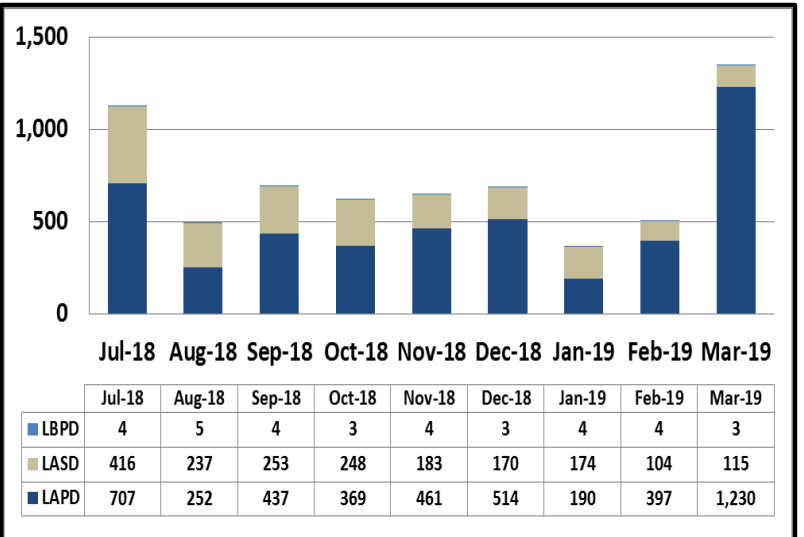
### Ratio of Staffing Levels vs Vacant Assignments



### Ratio of Proactive vs Dispatched Activity



### Grade Crossing Operations



Grade Crossing Operation Locations March:

1. Blue Line Stations (315)
2. Expo Line Stations (488)
3. Gold Line Stations (545)