

Measure M Independent Taxpayer Oversight Committee

Transit Projects Update

Allison Yoh, Executive Officer
June 7, 2023

Measure M Transit Projects



> Major Pillar Projects

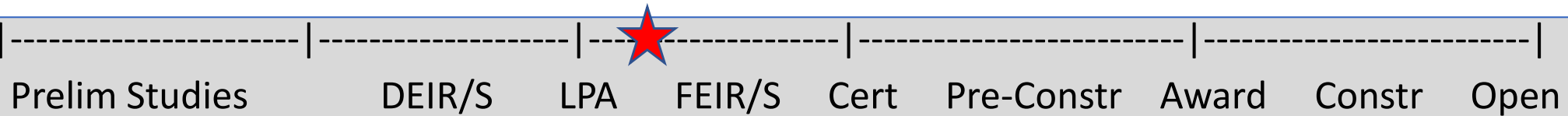
- A) West Santa Ana Branch
- B) Eastside Transit Corridor Phase 2
- C) Sepulveda Transit Corridor
- D) C (Green) Line Extension to Torrance

> Other Projects in Planning and Development

- North Hollywood to Pasadena*
- N. San Fernando Valley BRT*
- Vermont Transit Corridor
- K Line Northern Extension

* Transitioning to Program Management and Operations

West Santa Ana Branch Transit Corridor



Current Phase	Most Recent Cost Estimate
EIR/EIS	\$7.1B (YOES) - IOS

Recent Activities

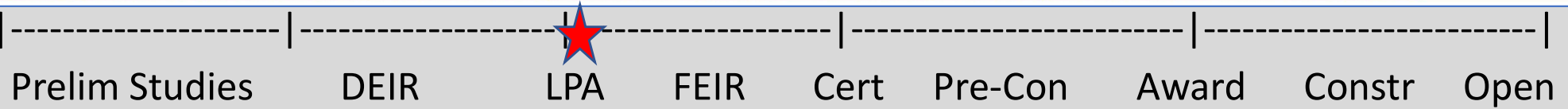
- Completion of 15% design (project definition) for Final EIS/EIR
- Board motion (March) to re-evaluate Project name; professional services in procurement
- Received \$10M in federal earmark
- FTA appointed Project Management Oversight Committee (PMOC)

Next Actions

- May: Public outreach on Final EIS/R design updates, Board action on contract modifications (COG, Eco-Rapid Transit, Cities)
- October: Finalize technical reports on design changes
- Spring 2024: Metro Board certification of Final EIR
- Summer 2024: FTA Record of Decision



Eastside Transit Corridor Phase 2



Current Phase

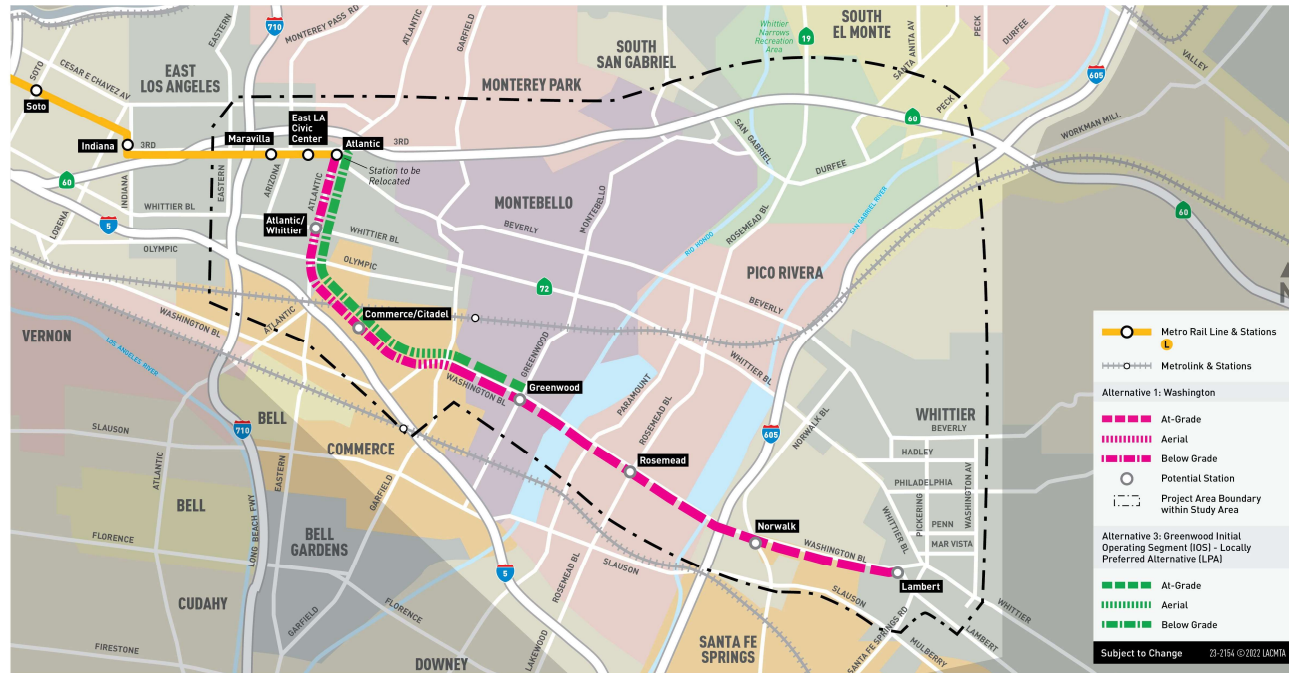
Most Recent Cost Estimate

EIR/EIS

\$7.9B (YOES, 2031\$) – IOS

Recent Activities

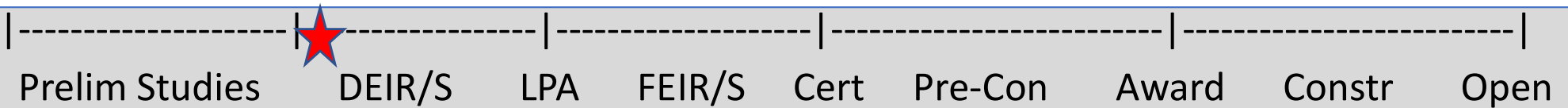
- Coordination with FTA to begin NEPA process
- Preparing a request over the next year to enter Project Development Phase
- Developing Cooperative Agreement with cities, conducting meetings with Washington Coalition
- Awarded \$35M from State TIRCP



Next Actions

- Community rail tours
- Summer 2023: Lidar surveying and geotechnical investigations along the alignment
- Working with FTA to determine appropriate level of NEPA documentation

Sepulveda Transit Corridor



Current Phase

EIR/EIS

Most Recent Cost Estimate

\$5.7B (2015\$)

Recent Activities

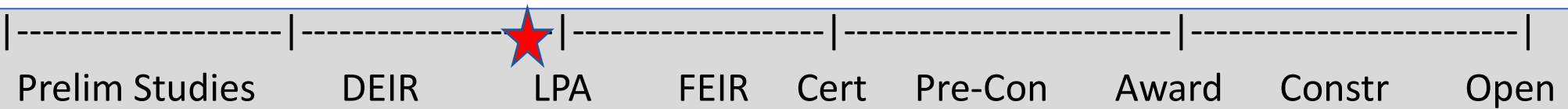
- Ongoing coordination between alternative designs and environmental analysis
- Continued engagement with other projects and with third party agencies
- Began the federal Planning and Environmental Linkages (PEL) meetings with agencies

Next Actions

- Continue to develop designs and prepare environmental technical studies
- Community meetings on performance of alternatives including travel time and ridership



C (Green) Line Extension to Torrance



Current Phase	Most Recent Cost Estimate
EIR/EIS	\$891M (2015\$)

Recent Activities

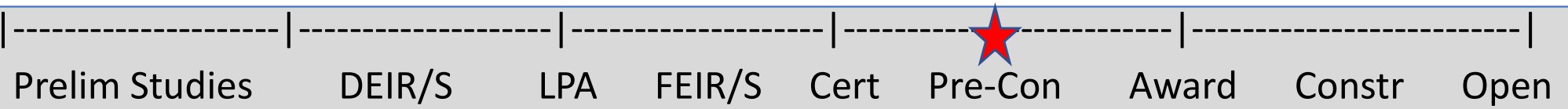
- Released Draft EIR and technical reports (cost, ridership, outreach) on January 26
- Held five public hearings in February
- Briefing key stakeholders on Draft EIR and collecting public comments until March 27 (close of 61-day comment period)

Next Actions

- Review public comments
- Prepare staff recommendations based on project objectives
- Early Fall 2023: Board selection of Locally Preferred Alternative (LPA)



North Hollywood to Pasadena BRT



Current Phase	Most Recent Cost Estimate
Pre-Construction	\$263M - \$386M (2015\$) - Capital

Recent Activities

- Preliminary engineering
- Meeting with each city on corridor to discuss project design
- Advancing project design (e.g., bus lanes, stations, transit signal priority, etc.)

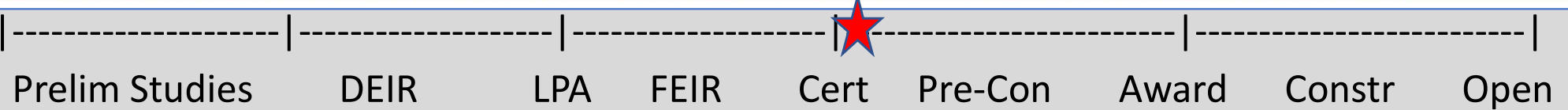


Next Actions

- Mid-2023 – Procure technical services to develop First/Last Mile Plan
- Spring/Summer 2023 - Release RFP for project management support services and final design (transition to Program Management)



North San Fernando Valley BRT Improvements



Current Phase	Most Recent Cost Estimate
Pre-Construction	\$180M (2015\$)

Recent Activities

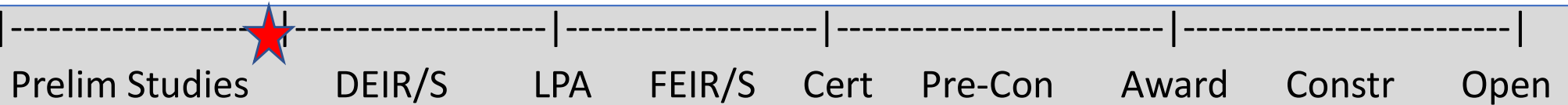
- Developed design of bus bulbs at select locations
- Initiated procurement of battery electric buses and charging infrastructure under Metro Operations
- Continuing to engage key stakeholders

Next Actions

- Initiate design of peak period bus only lanes
- Continue coordination with Streets LA on bus shelter implementation
- Continue transition of Project Implementation to Metro Service Development
- Continue key stakeholder engagement



Vermont Transit Corridor



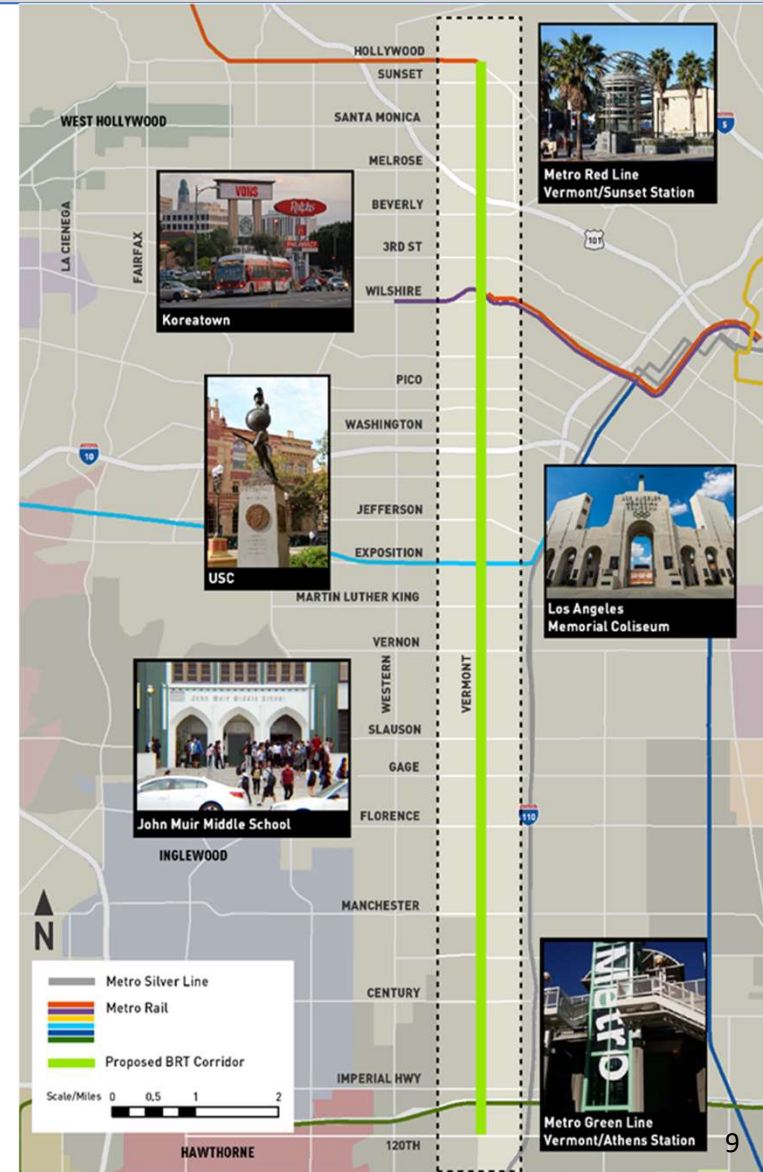
Current Phase	Most Recent Cost Estimate
Preliminary Studies	\$425M (2015\$)

Recent Activities

- Continued community/stakeholder engagement
- February 2023: Released RFP for planning and environmental studies for mid-term BRT and long-term rail improvements

Next Actions

- June 2023 (anticipated): Issue RFP for communications and outreach services
- Coordinate with Service Planning on near-term bus service improvements



Measure M Expenditure Plan Groundbreaking to Opening Dates

2020	2021	2022	2023	2024	2025	2026	2027	2028	2029	2030	2031	2032	2033	2034	2035	2036	2037	2038	2039	2040	2041	2042	2043	2044	2045	2046	2047	2048	2049	Measure M Opening Dates 3-Year Window	
Planning			NoHo to Pasadena BRT																										FY 2022 - 2024		
Planning			North SFV BRT																										FY 2023 - 2025		
Planning				LA River Path																									FY 2025 - 2027		
Planning				West Santa Ana Branch (Phase 1)						WSAB (Phase 1+Slauson) Approved by Board																		FY 2028 - 2030			
Planning								Vermont Corridor																						FY 2028 - 2030	
Planning							Green Line Extension to Torrance																							FY 2030 - 2032	
Planning								Sepulveda Transit Corridor (Phase 1)																							FY 2033 - 2035
Planning								Eastside Transit Corridor Phase 2																							FY 2035 - 2037
Planning				WSAB (Phase 2) - Slauson to LAUS																									FY 2041 - 2043		
Planning				K Line Northern Extension																			FY 2047 - 2049								
																							Sepulveda Transit Corridor (Phase 2)					FY 2057 - 2059			