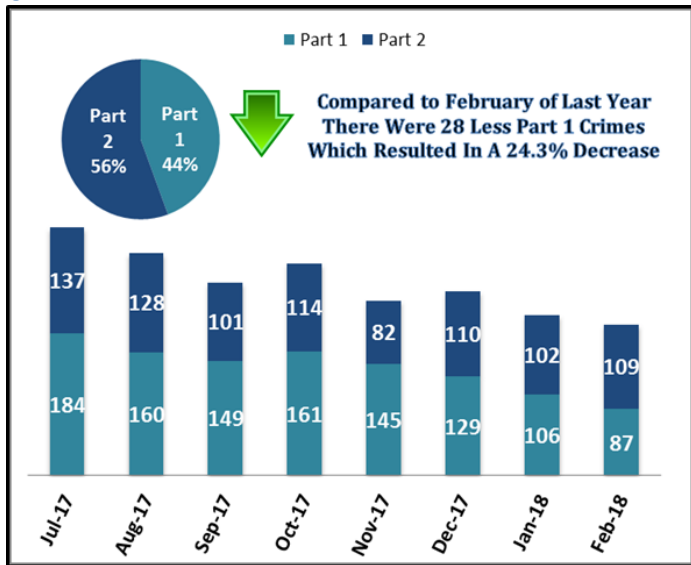


Key Performance Indicators

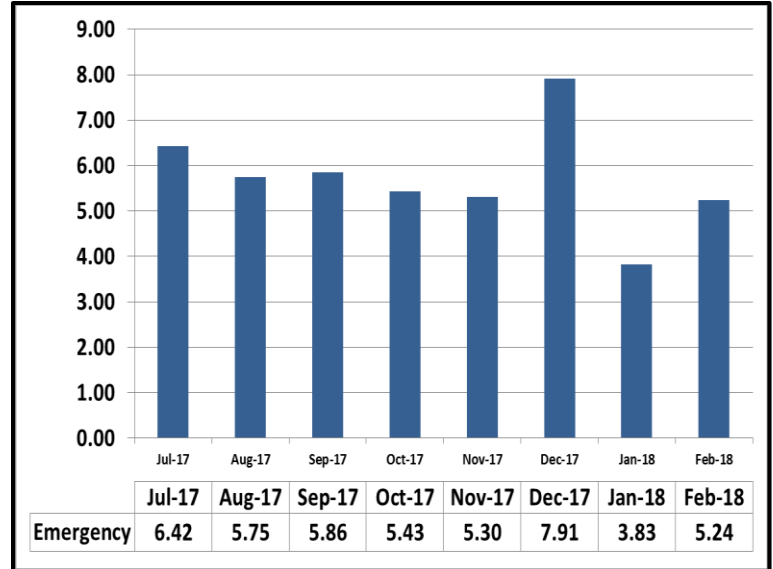
FEBRUARY 2018

Attachment C

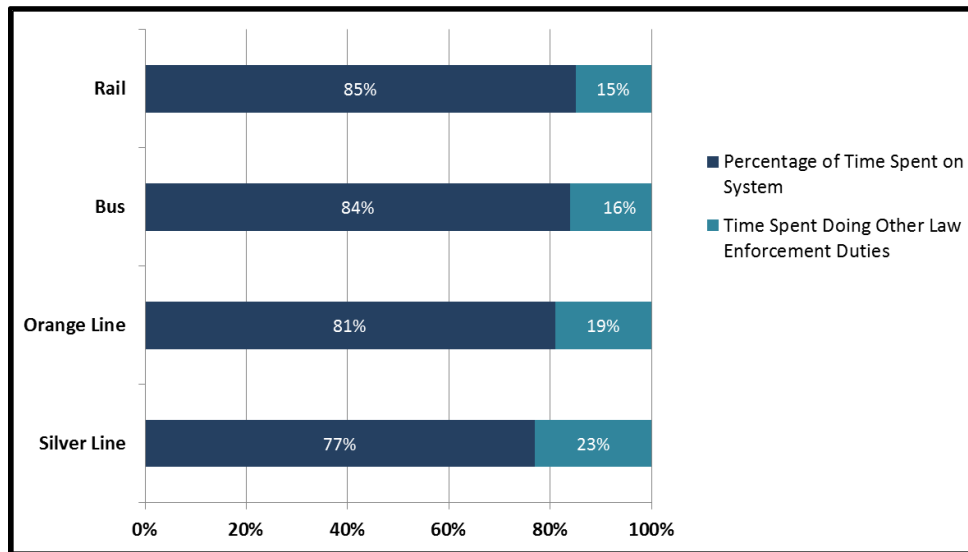
System Wide Part 1 & Part 2 Crimes



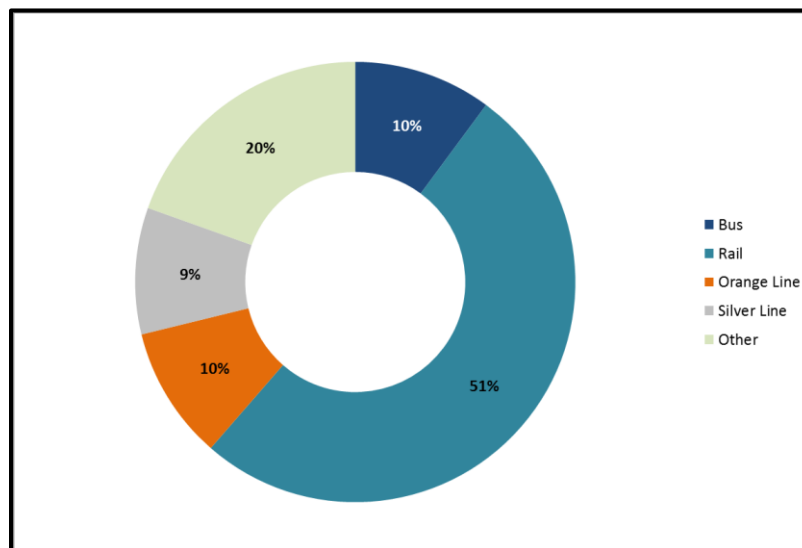
Average Emergency Response Times



Percentage of Time Spent on the System



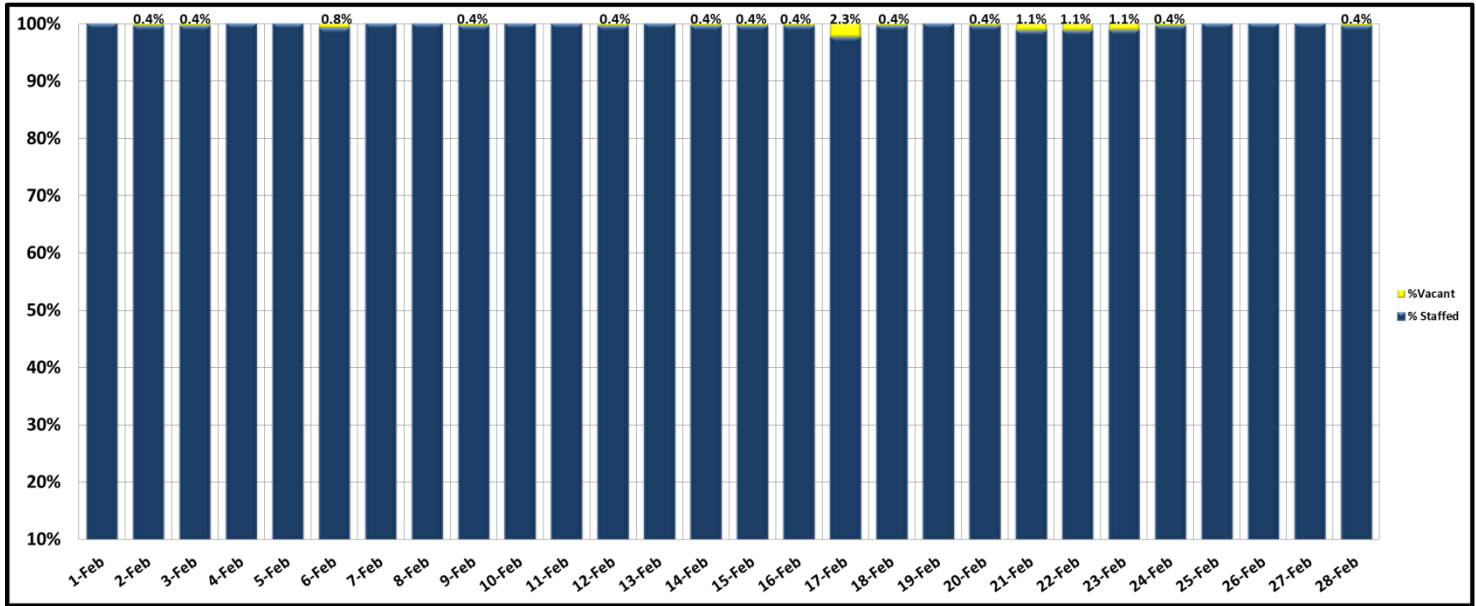
Percentage of Time Spent on the System as a Whole



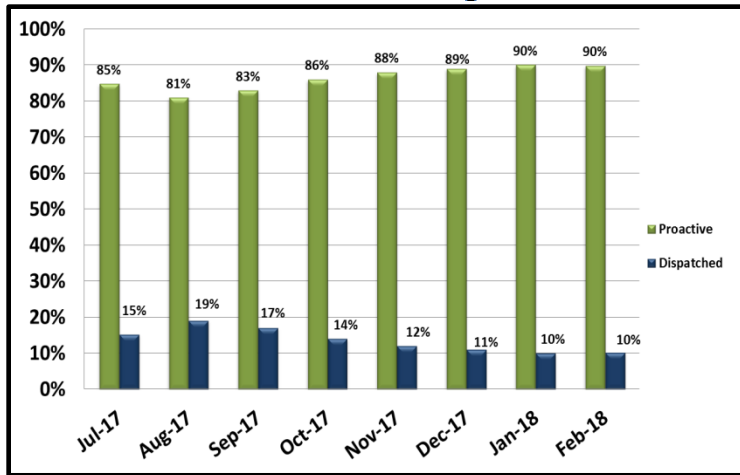
Key Performance Indicators

FEBRUARY 2018

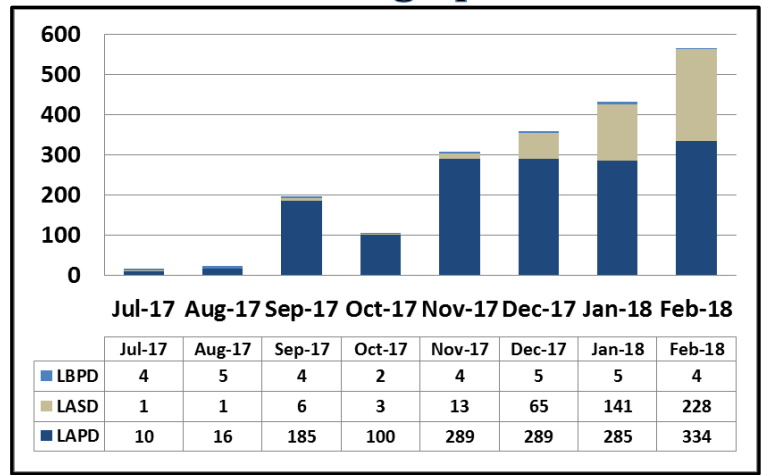
Ratio of Staffing Levels vs Vacant Assignments



Ratio of Proactive vs Dispatched Activity



Grade Crossing Operations



Grade Crossing Operation Locations February:

1. Blue Line Stations (192)
2. Expo Line Stations (70)
3. Gold Line Stations (304)